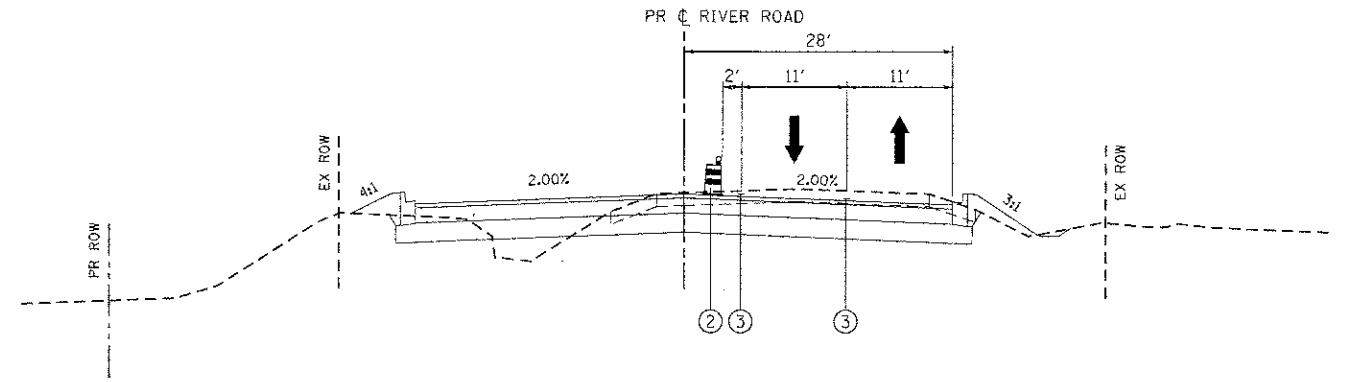
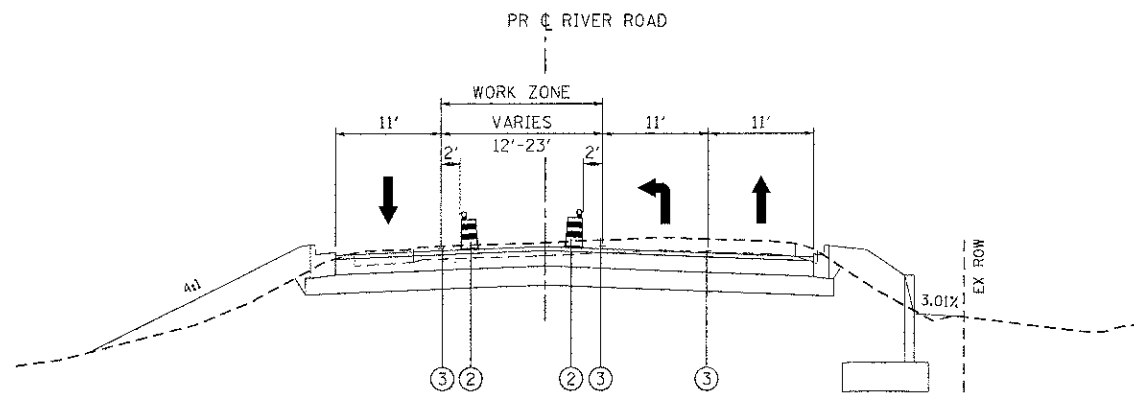


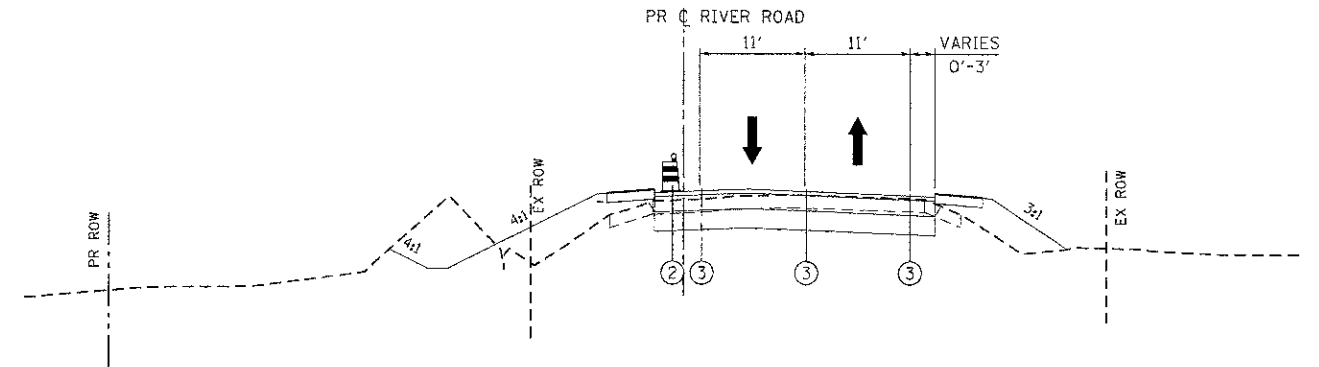
RIVER ROAD STAGE 3  
STA. 19+40 TO STA 27+72



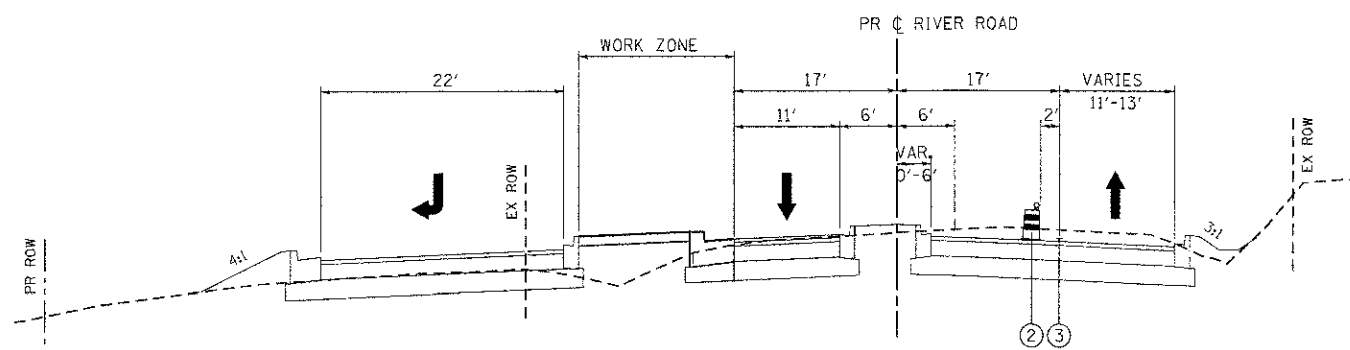
RIVER ROAD STAGE 3  
STA. 39+59 TO STA 43+00



RIVER ROAD STAGE 3  
STA. 27+72 TO STA 39+59



RIVER ROAD STAGE 3  
STA. 43+00 TO STA 45+40



RIVER ROAD STAGE 3  
STA. 30+00 TO STA 39+59

- LEGEND:**
- ① TEMPORARY PAVEMENT, 10" (SEE NOTE 2)
  - ② TYPE II BARRICADES OR DRUMS WITH STEADY BURNING LIGHTS @ 50 FT CENTERS ALONG ROADWAY TANGENTS, 25 FT CENTERS ALONG TAPERS, AND 12 FT CENTERS ALONG RADII
  - ③ PAVEMENT MARKING TAPE, TYPE III; TEMPORARY PAVEMENT MARKING (SEE NOTE 1)
  - ④ EXISTING PAVEMENT MARKING
  - ⑤ VERTICAL PANELS WITH STEADY BURNING LIGHTS (50 FT CENTERS)
  - ➔ DIRECTION OF TRAFFIC

**MAINTENANCE OF TRAFFIC NOTES:**

1. SEE MAINTENANCE OF TRAFFIC PLAN SHEETS FOR LOCATIONS AND TYPE OF TEMPORARY PAVEMENT MARKING.
2. SEE MAINTENANCE OF TRAFFIC PLAN SHEETS FOR TEMPORARY PAVEMENT CONSTRUCTION STAGING.

COMPANY NAME: HRGreen.com  
 PROJECT CONTACT: jettena  
 DATE PLOTTED: 7/23/2012 11:46:03 AM  
 FILE NAME: 090071-motgn-24.dgn  
 PLOT DRIVER: pdfcut  
 PLOT TABLE: standard-trans.tbl



USER NAME = jettena	DESIGNED - JPA	REVISED -
FILE NAME = 090071-motgn-24.dgn	DRAWN - SVJ	REVISED -
PLOT SCALE = N.T.S.	CHECKED - JLP	REVISED -
PLOT DATE = 7/23/2012	DATE - 7/23/12	REVISED -

**MCHENRY COUNTY  
DIVISION OF TRANSPORTATION**

**SUGGESTED MAINTENANCE OF TRAFFIC - TYPICAL SECTIONS  
CHARLES J. MILLER ROAD ROADWAY IMPROVEMENTS**

SCALE: N.T.S. SHEET NO. 11 OF 12 SHEETS STA. TO STA.

F.A.U. RTE.	SECTION	COUNTY	TOTAL SHEETS	SHEET NO.
3860	09-00372-00-PW	MCHENRY	252	33
FED. ROAD DIST. NO.			BILLING: FED. AID PROJECT	
			CONTRACT NO. 63633	