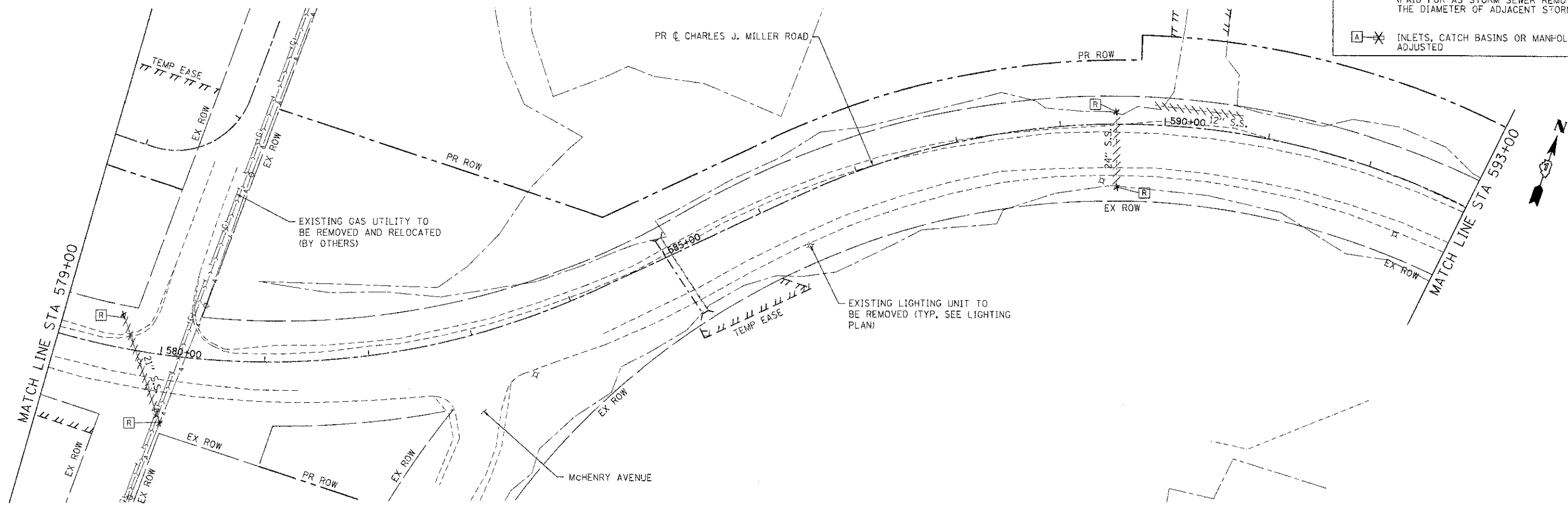
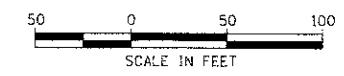


**PROJECT BEGINS
STA. 565 + 87**

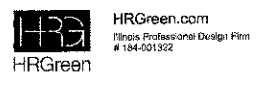
NOTE:
ALL UTILITIES THAT ARE IN CONFLICT
WITH PROPOSED WORK WILL BE REMOVED
AND RELOCATED BY OTHERS.

DRAINAGE REMOVAL LEGEND:

	STORM SEWER REMOVAL (SEE PLAN FOR DIAMETER)
	REMOVING INLETS
	REMOVING CATCH BASINS
	REMOVING MANHOLES
	REMOVE CONCRETE FLARED END SECTIONS (PAID FOR AS STORM SEWER REMOVAL OF THE DIAMETER OF ADJACENT STORM SEWER)
	INLETS, CATCH BASINS OR MANHOLES TO BE ADJUSTED



7/23/2012 11:09:38 AM
090071-rm02-03.dgn
pef:shf
standard-ct-trans.tbl



USER NAME = jattano	DESIGNED = JPA	REVISED =
FILE NAME = 090071-rm02-03.dgn	DRAWN = SVJ	REVISED =
PLOT SCALE = 1" = 50'	CHECKED = JLP	REVISED =
PLOT DATE = 7/23/2012	DATE = 7/23/12	REVISED =

**MCHENRY COUNTY
DIVISION OF TRANSPORTATION**

**DRAINAGE AND UTILITY REMOVAL PLAN - CHARLES J. MILLER ROAD
CHARLES J. MILLER ROAD ROADWAY IMPROVEMENTS**

SCALE: 1" = 50' SHEET NO. 1 OF 3 SHEETS STA. 569+00 TO STA. 596+00

F.A.U. RTE.	SECTION	COUNTY	TOTAL SHEETS	SHEET NO.
3860	09-00372-00-PW	MCHENRY	252	60
CONTRACT NO. 63633				