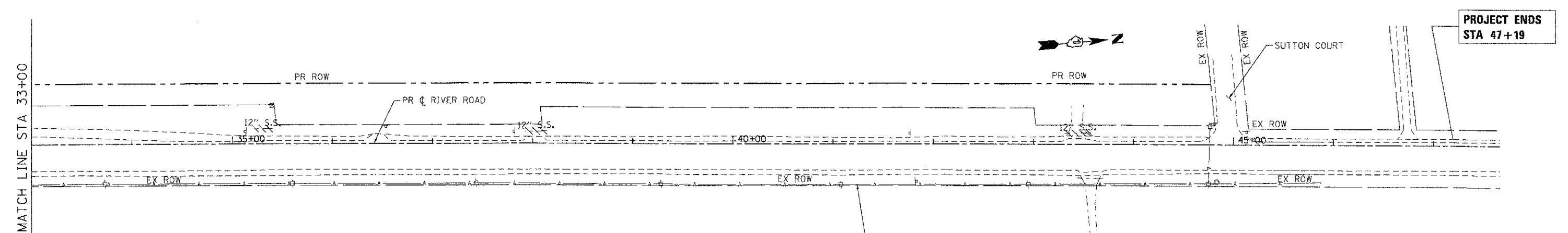


NOTE:
ALL UTILITIES THAT ARE IN CONFLICT WITH PROPOSED WORK WILL BE REMOVED AND RELOCATED BY OTHERS.



DRAINAGE REMOVAL LEGEND:

- STORM SEWER REMOVAL (SEE PLAN FOR DIAMETER)
- REMOVING INLETS
- REMOVING CATCH BASINS
- REMOVING MANHOLES
- REMOVE CONCRETE FLARED END SECTIONS (PAID FOR AS STORM SEWER REMOVAL OF THE DIAMETER OF ADJACENT STORM SEWER)
- INLETS, CATCH BASINS OR MANHOLES TO BE ADJUSTED

COMPANY NAME: HRGreen.com
 PROJECT CONTACT: jattene
 CLIENT: MCHENRY COUNTY
 DATE PLOTTED: 7/23/2012 10:56:57 AM
 FILE NAME: 090071-rem02-08.dgn
 PLOT DRIVER: perfplot
 PEN TABLE: standard-trans.tbl

HRGreen.com
 Illinois Professional Design Firm
 #184-001322

USER NAME = jattene	DESIGNED - JPA	REVISED -
FILE NAME = 090071-rem02-08.dgn	DRAWN - SVJ	REVISED -
PLOT SCALE = 1" = 50'	CHECKED - JLP	REVISED -
PLOT DATE = 7/23/2012	DATE - 7/23/12	REVISED -

**MCHENRY COUNTY
DIVISION OF TRANSPORTATION**

**DRAINAGE AND UTILITY REMOVAL PLAN - RIVER ROAD
CHARLES J. MILLER ROAD ROADWAY IMPROVEMENTS**

SCALE: 1" = 50' SHEET NO. 3 OF 3 SHEETS STA. 19+40 TO STA. 45+40

F.A.U. RTE.	SECTION	COUNTY	TOTAL SHEETS	SHEET NO.
3860	09-00372-00-PW	MCHENRY	252	62
CONTRACT NO. 63633			ILLINOIS FED. AID PROJECT	