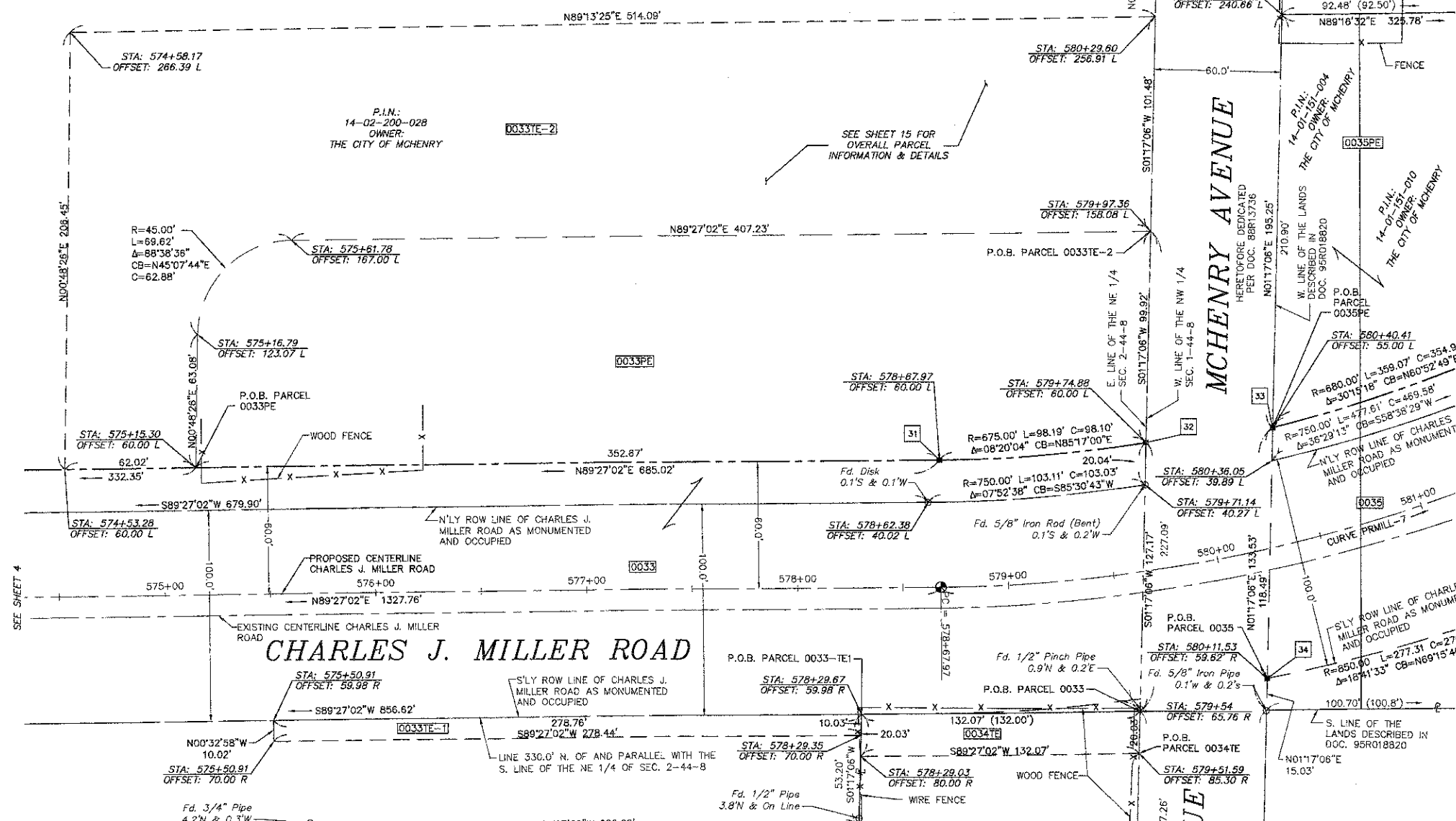
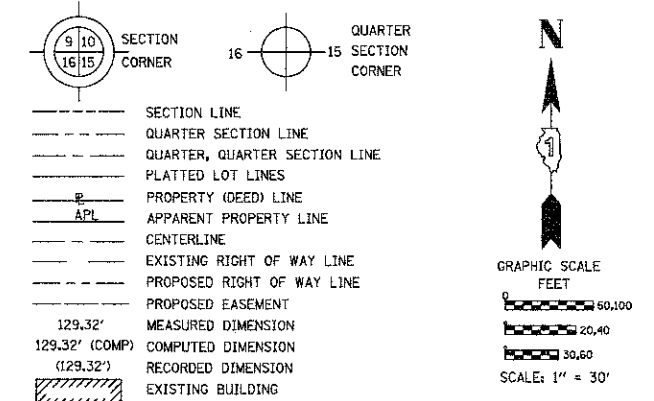


PART OF THE NW 1/4 OF SECTION 1 & NE 1/4 OF SECTION 2, TWP. 44 N., R. 8 E. OF THE 3RD. P.M., IN McHENRY COUNTY, ILLINOIS.

| PARCEL NUMBER                          | OWNER                             | TOTAL HOLDINGS ACRES | PART TAKEN ACRES | AREA IN EXISTING R.O.W. ACRES | REMAINDER AREA ACRES | EASEMENT ACRES          | EASEMENT AREA SQUARE FEET | EASEMENT PURPOSE                    | PERMANENT INDEX NUMBER | PROPERTY ACQUIRED BY |
|----------------------------------------|-----------------------------------|----------------------|------------------|-------------------------------|----------------------|-------------------------|---------------------------|-------------------------------------|------------------------|----------------------|
| 0033<br>0033PE<br>0033TE-1<br>0033TE-2 | THE CITY OF MCHENRY               | 19.836               | 2.332            | 1.969                         | 17.504               | 1.092<br>0.064<br>1.346 | N/A<br>N/A<br>N/A         | PERMANENT<br>TEMPORARY<br>TEMPORARY | 4-02-200-028           |                      |
| 0034TE                                 | JULIE L. WHITE AND JAMES D. GALTO | 1.001                | N/A              | N/A                           | 1.001                | 0.061                   | N/A                       | TEMPORARY                           | 4-02-200-013           |                      |

LEGEND



P.I.N.: 14-02-200-028  
OWNER: THE CITY OF MCHENRY

| POINT NUMBER | TIE TO POINT | TIE DISTANCE (FEET) |
|--------------|--------------|---------------------|
| 31           | T1           |                     |
|              | T2           |                     |
|              | T3           |                     |
| 32           | T1           |                     |
|              | T2           |                     |
|              | T3           |                     |
| 33           | T1           |                     |
|              | T2           |                     |
|              | T3           |                     |
| 34           | T1           |                     |
|              | T2           |                     |
|              | T3           |                     |

P.I.N.: 14-02-200-013  
OWNER: JULIE L. WHITE & JAMES D. GALTO

| STATION        | OFFSET           | NORTHING    | EASTING     |
|----------------|------------------|-------------|-------------|
| STA: 574+53.28 | OFFSET: 60.00 L  | 2060107.960 | 1004144.286 |
| STA: 575+15.30 | OFFSET: 60.00 L  | 2060108.554 | 1004206.301 |
| STA: 574+58.17 | OFFSET: 266.39 L | 2060314.386 | 1004147.195 |
| STA: 575+16.79 | OFFSET: 123.07 L | 2060171.631 | 1004207.190 |
| STA: 575+61.78 | OFFSET: 167.00 L | 2060215.995 | 1004251.754 |
| STA: 575+50.91 | OFFSET: 59.98 R  | 2059988.924 | 1004243.059 |
| STA: 575+50.91 | OFFSET: 70.00 R  | 2059978.903 | 1004243.155 |
| STA: 578+29.67 | OFFSET: 59.98 R  | 2059991.598 | 1004521.809 |
| STA: 578+29.35 | OFFSET: 70.00 R  | 2059981.573 | 1004521.584 |
| STA: 578+29.03 | OFFSET: 80.00 R  | 2059971.570 | 1004521.360 |
| STA: 578+62.38 | OFFSET: 40.02 L  | 2060091.907 | 1004553.557 |
| STA: 578+67.97 | OFFSET: 60.00 L  | 2060111.936 | 1004558.954 |
| STA: 579+97.36 | OFFSET: 158.08 L | 2060219.900 | 1004658.963 |
| STA: 579+71.14 | OFFSET: 59.98 R  | 2060098.989 | 1004656.273 |
| STA: 579+54.00 | OFFSET: 65.76 R  | 2059992.864 | 1004653.871 |
| STA: 579+51.59 | OFFSET: 85.30 R  | 2059972.837 | 1004653.421 |
| STA: 579+74.88 | OFFSET: 60.00 L  | 2060120.003 | 1004656.722 |
| STA: 580+11.53 | OFFSET: 59.62 R  | 2060008.615 | 1004714.239 |
| STA: 580+29.60 | OFFSET: 256.91 L | 2060321.352 | 1004661.238 |
| STA: 580+36.05 | OFFSET: 39.89 L  | 2060111.435 | 1004716.545 |
| STA: 580+40.41 | OFFSET: 55.00 L  | 2060127.081 | 1004716.896 |
| STA: 580+40.41 | OFFSET: 55.00 L  | 2060127.081 | 1004716.896 |
| STA: 581+17.04 | OFFSET: 240.66 L | 2060322.278 | 1004721.274 |

Plotted By: [Name], Plotted On: [Date], [Other details]