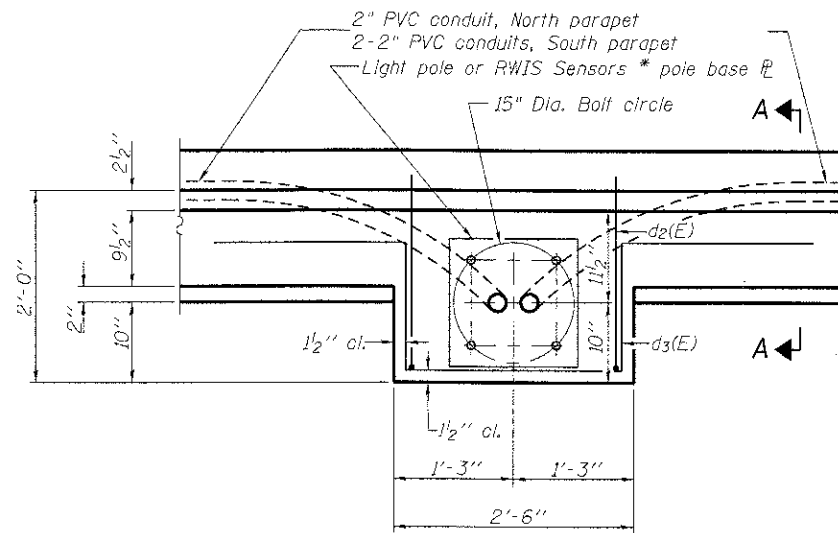


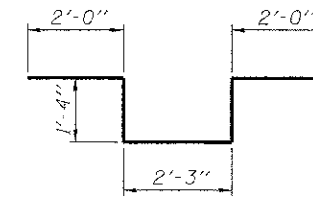
SECTION A-A



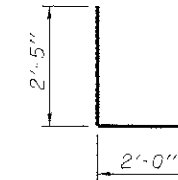
PLAN

Note:
Cost of anchor rods and conduit is included with Concrete Superstructure.

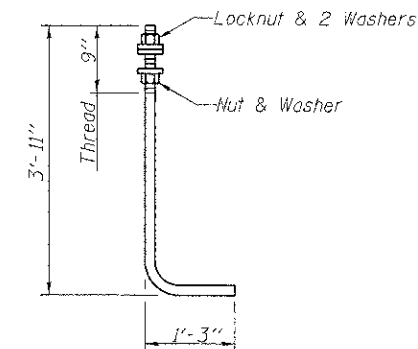
Refer to General Plan and Elevation for location, (4 locations). Coordinate with S-11 and Electrical Plans.



BAR d₃(E)



BAR d₂(E)



ANCHOR ROD - 1" DIA.

(ASTM F 1554 Grade 105)

* See RWIS Detail sheet, Sheet 190 of 252

SUPERSTRUCTURE DETAILS - LIGHT POLE BASE
STRUCTURE NO. 056-3190

WB CHARLES J. MILLER ROAD BRIDGE

DATE: 7/23/12

SHEET NO.	F.A.U. RTE.	SECTION	COUNTY	TOTAL SHEETS	SHEET NO.
S-12	3860	09-00372-00-PW	McHENRY	252	135
S-41 SHEETS			CONTRACT NO. 63633		
FED. ROAD DIST. NO. 1 ILLINOIS FED. AID PROJECT					



HRGreen.com
Illinois Professional Design Firm
184-001322

DESIGNED	SSM
CHECKED	RGD
DRAWN	WJH
CHECKED	RGD

FILE NAME: 090707-sup02.dwg
PLOT DRIVER: pdf247
PEN TABLE: Standard-Trans.tbl