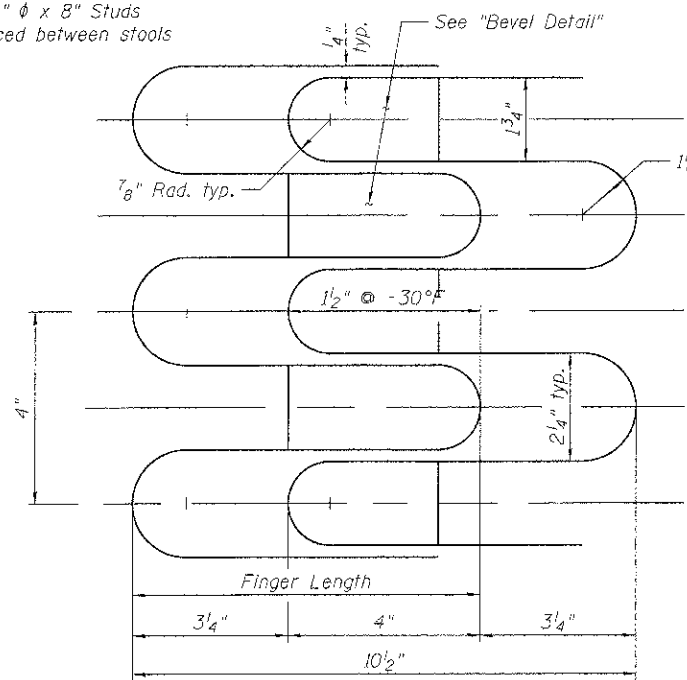
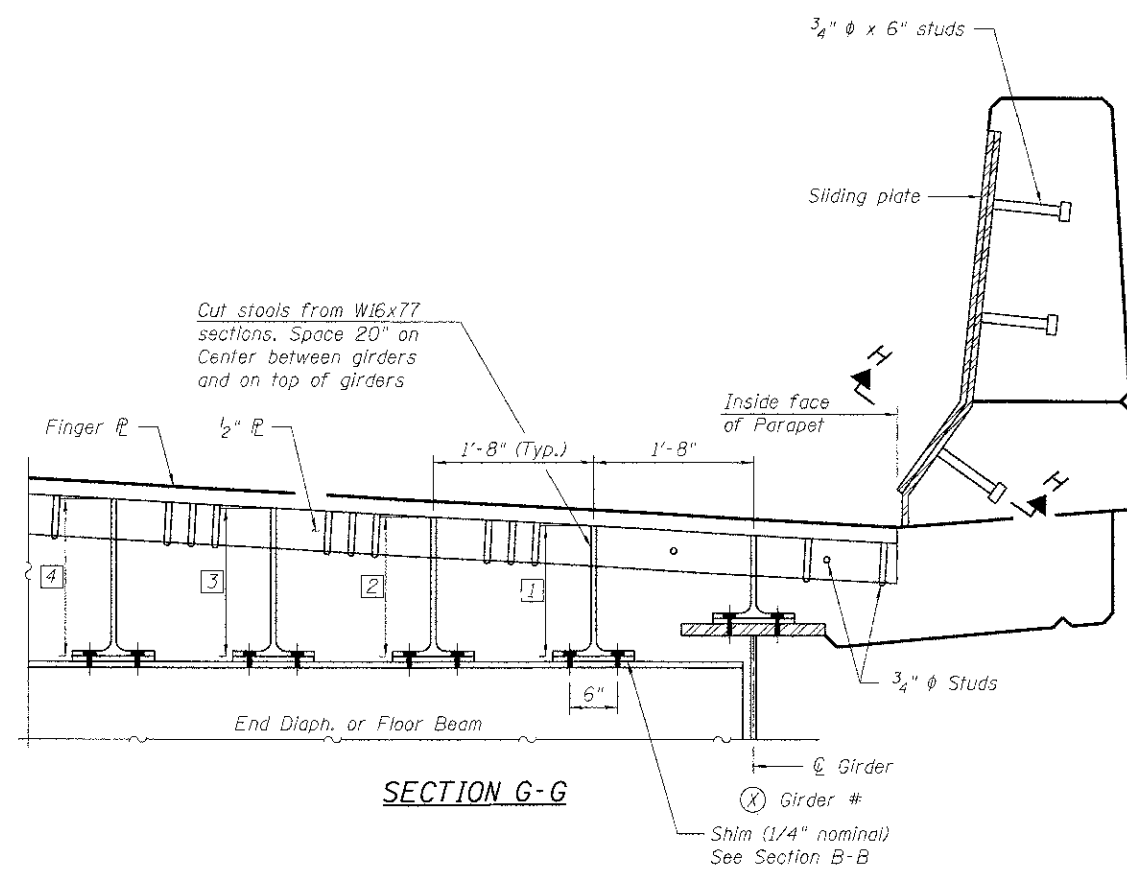


PLAN

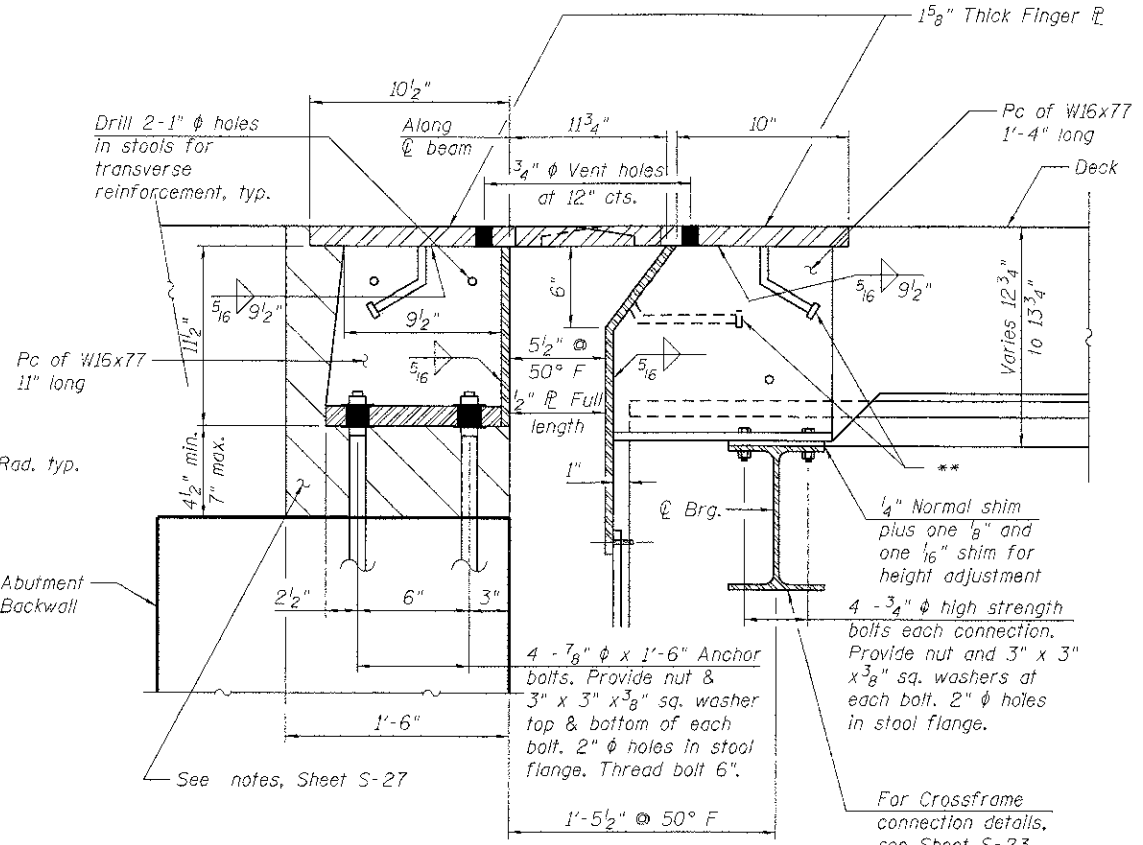
"X" = 3-3/4" ϕ x 8" Stud
evenly spaced between stools



JOINT OPENING AND GEOMETRY DETAIL



SECTION G-G



SECTION B-B

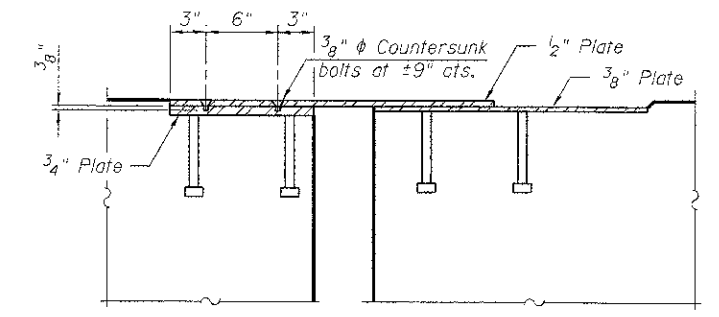
1. Finger plate expansion joints shall be assembled in their final relative position with the ends in place for shop inspection and acceptance.
2. Parapet and Sliding Plate detail as shown in Section G-G, Section H-H and Sheet S-18. Parapet Plates and anchorage studs shall be included in the contract unit price for Finger Plate Expansion Joint, 5'.

STOOL HEIGHTS FROM (A) TO PGL

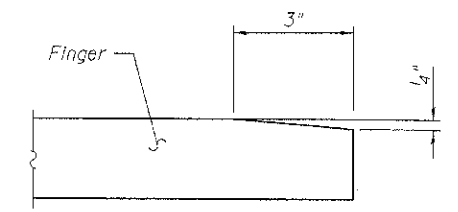
(A)	1	2	3	4
6 7/8"	10 7/8"	11 1/4"	11 1/2"	11 7/8"
(B)	1	2	3	P.G.L.
6 7/8"	10 3/4"	11 5/8"	11 3/8"	

STOOL HEIGHTS FROM (D) TO PGL

(D)	1	2	3	4
6 7/8"	10 7/8"	11 1/4"	11 1/2"	11 7/8"
(C)	1	P.G.L.		
6 7/8"	11 1/4"			



SECTION H-H



BEVEL DETAIL

** 3/4" ϕ x 8" granular or solid flux filled headed studs conforming to Art. 1006.32 of the Std. Specifications.

FINGER PLATE EXPANSION JOINT DETAILS
STRUCTURE NO. 056-3190

DESIGNED	SSM
CHECKED	RGD
DRAWN	WJH
CHECKED	RGD

HRGreen
HRGreen.com
Illinois Professional Design Firm
184-001322

WB CHARLES J. MILLER ROAD BRIDGE		DATE: 7/23/12	
SHEET NO. S-19	F.A.U. RTE. 3860	SECTION 09-00372-00-PW	COUNTY McHENRY
S-41 SHEETS	TOTAL SHEETS 252		SHEET NO. 142
FED. ROAD DIST. NO. 1		ILLINOIS	FED. AID PROJECT
		CONTRACT NO.	63633