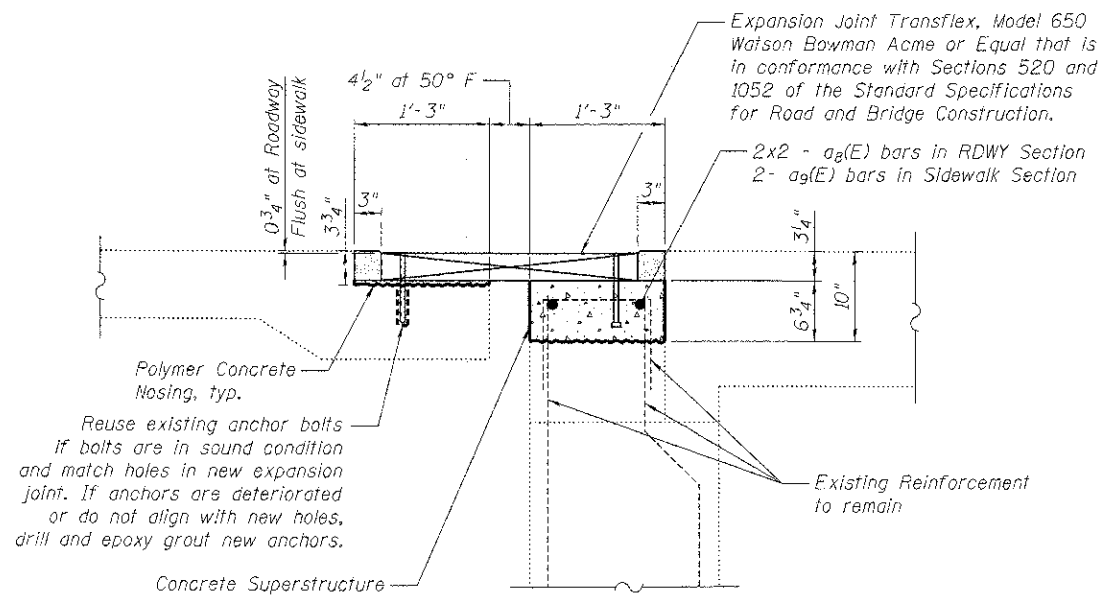
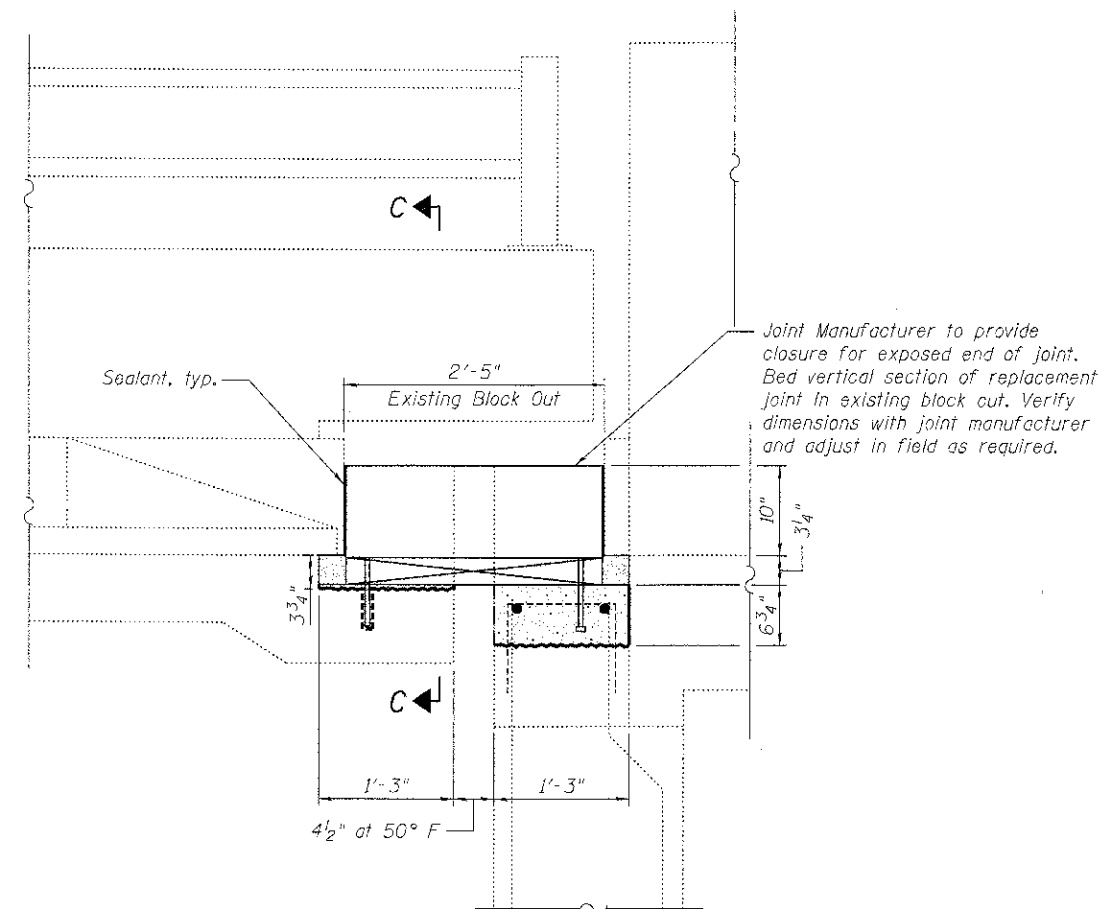


PLAN - WEST ABUTMENT



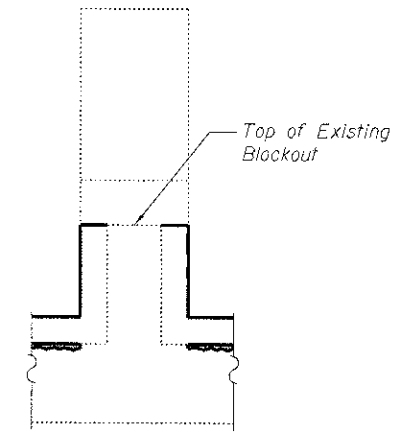
SECTION A-A



SECTION B-B

**BILL OF MATERIAL**

Bar	No.	Size	Length	Shape
$a_8(E)$	4	#5	17'-10"	—
$a_9(E)$	2	#5	8'-8"	—
Concrete Removal			Cu. Yd.	1.3
Concrete Superstructure			Cu. Yd.	1.1
Polymer Concrete			Cu. Ft.	6.2
Reinforcement Bars, Epoxy Coated			Pound	90
Neoprene Expansion Joint 6 1/2"			Foot	44.3



SECTION C-C

**EXPANSION JOINT REPLACEMENT DETAILS  
WEST ABUTMENT  
STRUCTURE NO. 056-3149**

DESIGNED	SSM
CHECKED	RGD
DRAWN	WJH
CHECKED	RGD



HRGreen.com  
Illinois Professional Design Firm  
#184-001322

SHEET NO. S-40		EB CHARLES J. MILLER ROAD BRIDGE		DATE: 7/23/12	
F.A.U. RTE.	SECTION	COUNTY	TOTAL SHEETS	SHEET NO.	
3860	09-00372-00-PW	McHENRY	252	163	
S-41 SHEETS			CONTRACT NO. 63633		
FED. ROAD DIST. NO. 1 ILLINOIS FED. AID PROJECT					