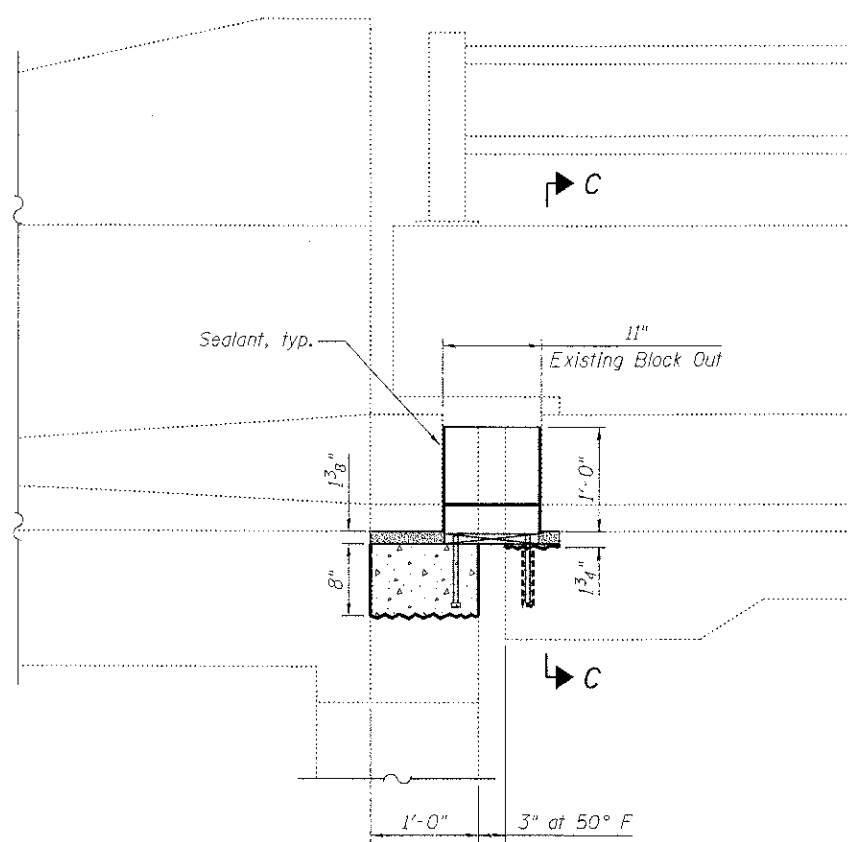
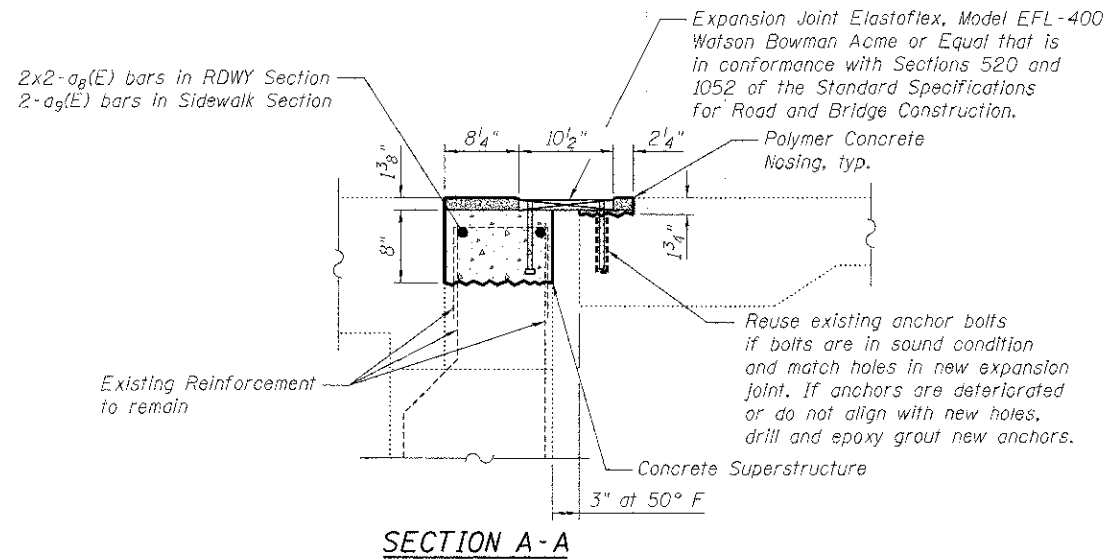
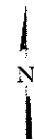


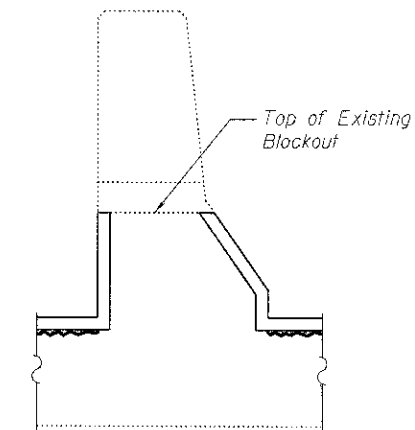
PLAN - EAST ABUTMENT



SECTION B-B

BILL OF MATERIAL

Bar	No.	Size	Length	Shape
Ø ₈ (E)	4	#5	17'-10"	—
Ø ₉ (E)	2	#5	8'-8"	—
Concrete Removal		Cu. Yd.	1.2	
Concrete Superstructure		Cu. Yd.	1.0	
Polymer Concrete		Cu. Ft.	4.4	
Reinforcement Bars, Epoxy Coated		Pound	90	
Neoprene Expansion Joint 4"		Foot	44.0	



EXPANSION JOINT REPLACEMENT DETAILS
EAST ABUTMENT
STRUCTURE NO. 056-3149

DESIGNED	SSM
CHECKED	RGD
DRAWN	WJH
CHECKED	RGD



HRGreen.com
Illinois Professional Design Firm
184-001322

SHEET NO. S-41		EB CHARLES J. MILLER ROAD BRIDGE		DATE: 7/23/12	
F.A.U RTE.	SECTION	COUNTY	TOTAL SHEETS	SHEET NO.	
3860	09-00372-00-PW	MCHENRY	252	164	
S-41 SHEETS			CONTRACT NO. 63633		
FED. ROAD DIST. NO. 1 ILLINOIS FED. AID PROJECT					