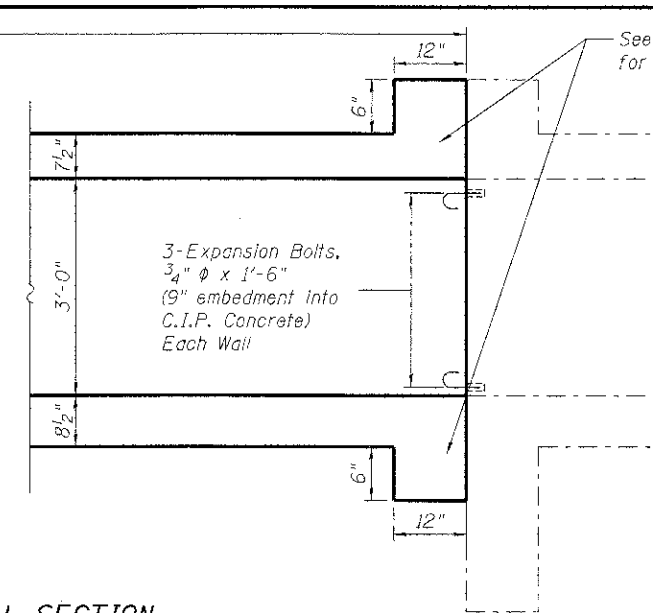
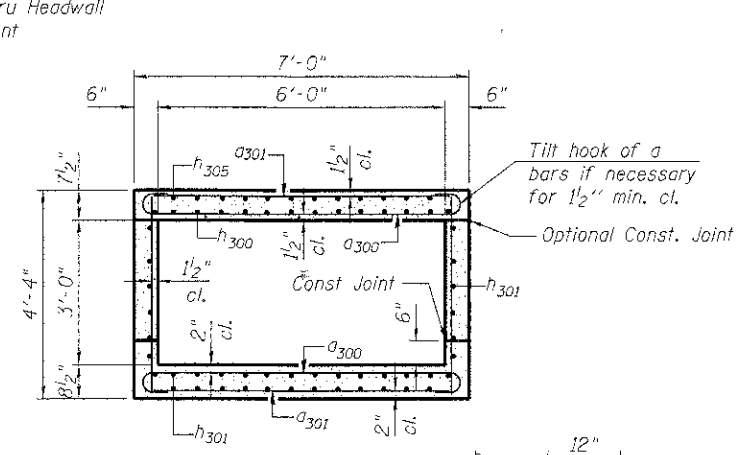


LONGITUDINAL SECTION

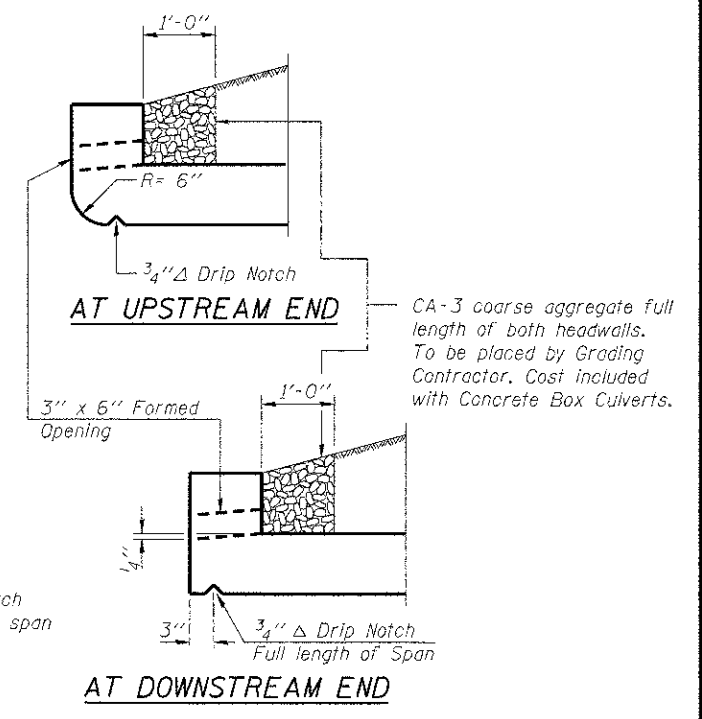


SECTION THRU BARREL

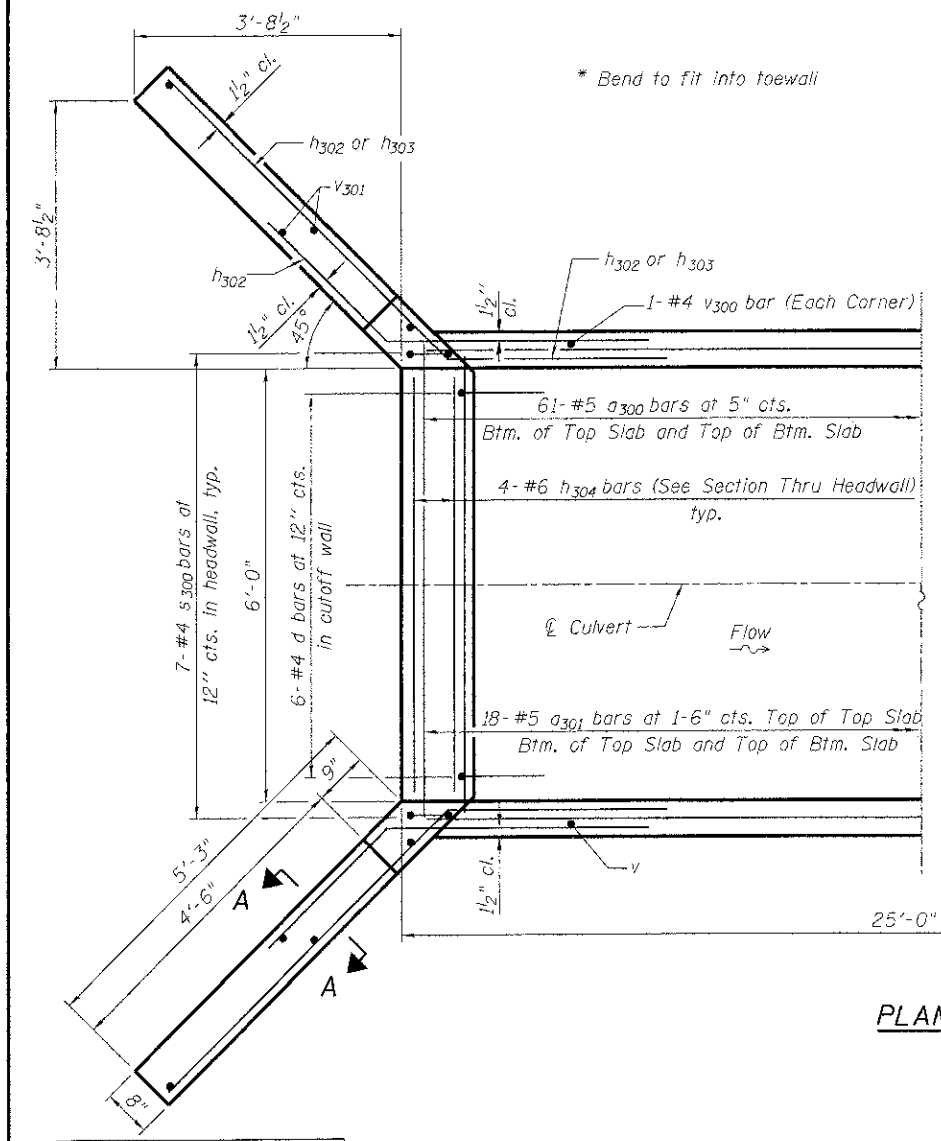
MIN. BAR LAP
#4 bars = 1'-9"



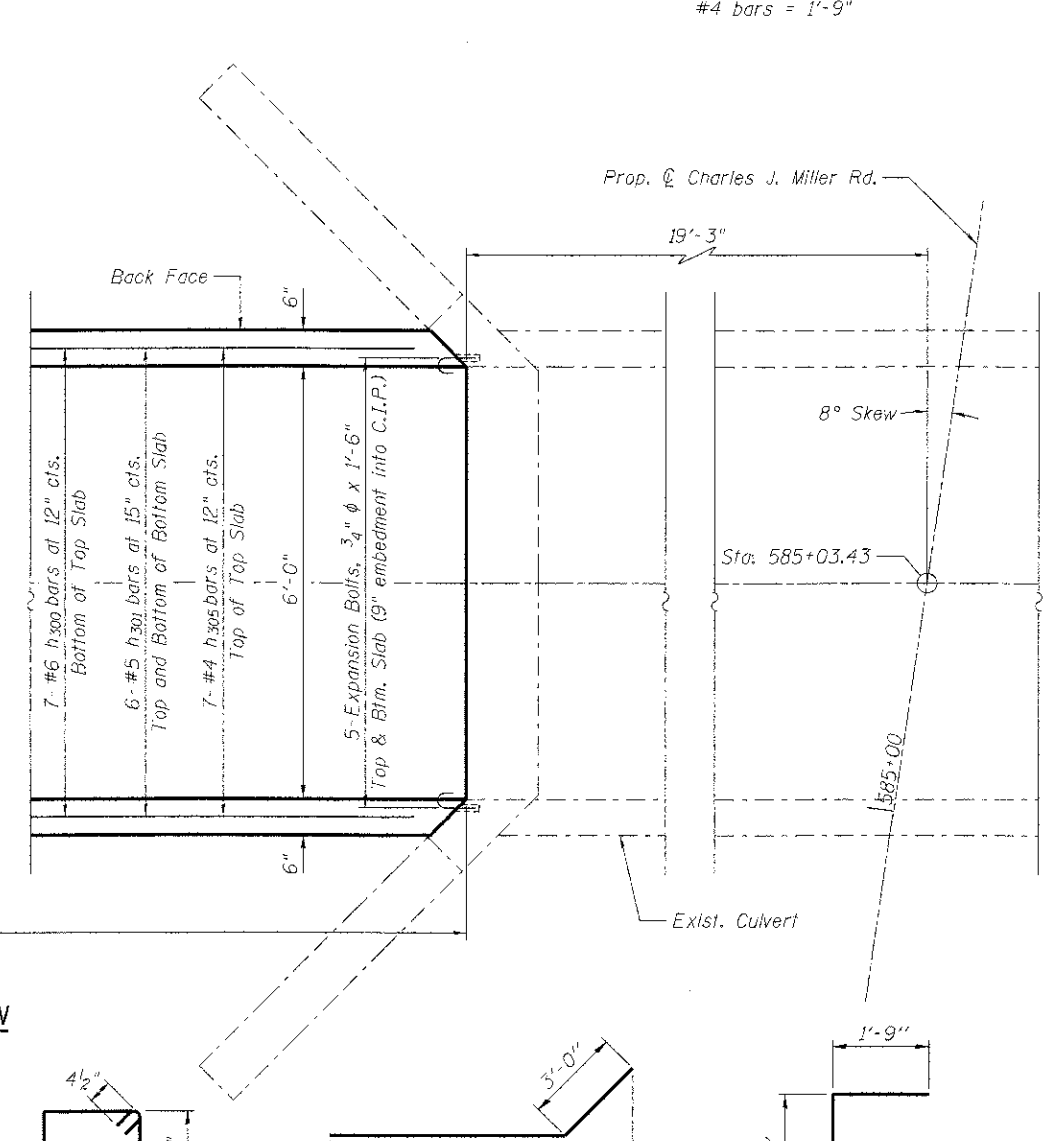
SECTION THRU HEADWALLS



DRAIN DETAIL



PLAN



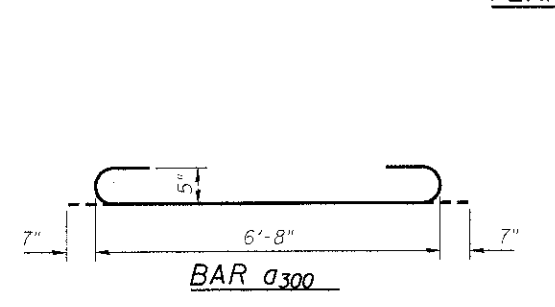
SECTION A-A

BILL OF MATERIAL

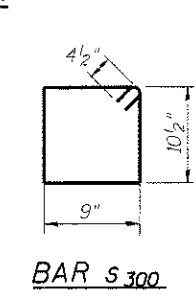
Bar	No.	Size	Length	Shape
a300	122	# 5	7'-10"	U
a301	37	# 5	6'-3"	I
d300	6	# 4	4'-6"	L
h300	7	# 6	24'-9"	I
h301	22	# 5	24'-9"	I
h302	12	# 4	8'-0"	L
h303	12	# 4	8'-4"	L
h304	12	# 6	6'-0"	I
h305	7	# 4	24'-9"	I
s300	21	# 4	4'-0"	□
v300	70	# 4	4'-0"	I
v301	8	# 4	6'-9"	I
Stone Dumped Riprap, Class A3		Ton	3	
Reinforcement Bars		Pound	2,720	
Expansion Bolts 3/4"		Each	14	
Concrete Box Culverts		Cu. Yd.	14.0	
Cleaning Culverts		Each	1	

CULVERT DETAILS

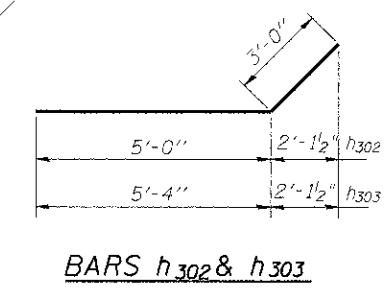
DESIGNED	JPG
CHECKED	RGD
DRAWN	WJM
CHECKED	RGD



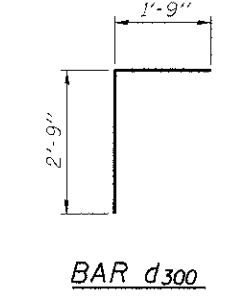
BAR a300



BAR s300



BARS h302 & h303



BAR d300



HRGreen.com
Illinois Professional Design Firm
184-001322

CHARLES J. MILLER ROAD BOX CULVERT		DATE: 7/23/12	
SHEET NO. SC-3	F.A.U. RTE. 3860	SECTION 09-00372-00-PW	COUNTY McHENRY
SC-3 SHEETS			TOTAL SHEETS 252
			SHEET NO. 173
FED. ROAD DIST. NO. 1 ILLINOIS		CONTRACT NO. 63633	
FED. AID PROJECT			