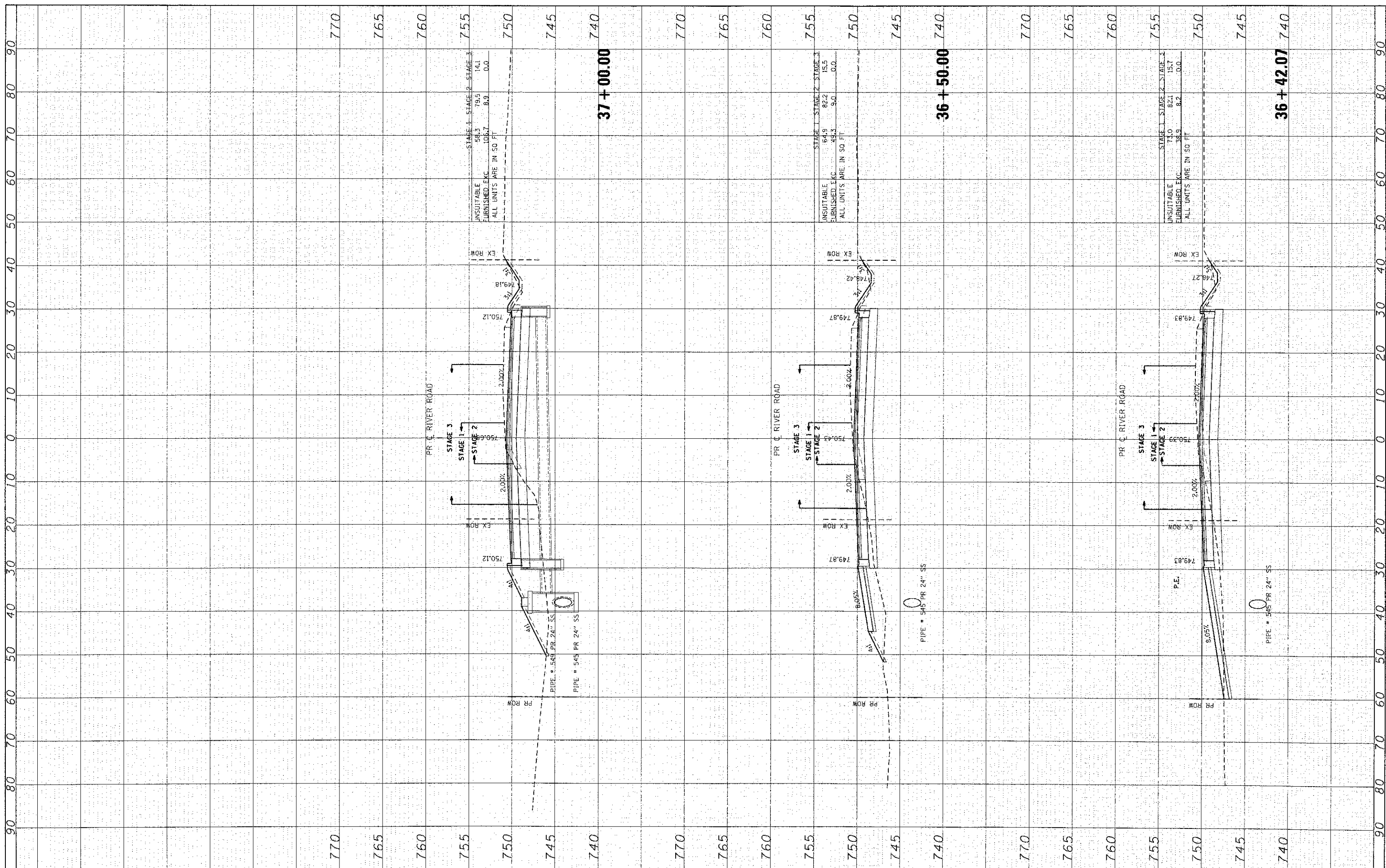


ORIGINAL SURVEY	DATE
SURVEYED	BY
PLOTTED	DATE
TEMPLATE	DATE
NOTE BOOK	DATE
AREAS CHECKED	DATE

ORIGINAL SURVEY	DATE
SURVEYED	BY
PLOTTED	DATE
TEMPLATE	DATE
NOTE BOOK	DATE
AREAS CHECKED	DATE



STAGE 1	STAGE 2	STAGE 3
14.1	14.1	14.1
19.5	19.5	19.5
8.9	8.9	8.9
106.7	106.7	106.7
58.3	58.3	58.3
14.1	14.1	14.1
0.0	0.0	0.0

INSUITABLE FURNISHED EXC. ALL UNITS ARE IN 50 FT.

STAGE 1	STAGE 2	STAGE 3
15.5	15.5	15.5
9.0	9.0	9.0
94.9	94.9	94.9
48.3	48.3	48.3
15.5	15.5	15.5
0.0	0.0	0.0

INSUITABLE FURNISHED EXC. ALL UNITS ARE IN 50 FT.

STAGE 1	STAGE 2	STAGE 3
15.7	15.7	15.7
8.2	8.2	8.2
71.0	71.0	71.0
38.9	38.9	38.9
15.7	15.7	15.7
0.0	0.0	0.0

INSUITABLE FURNISHED EXC. ALL UNITS ARE IN 50 FT.

HRGreen.com
 #1000 Professional Design Firm
 #194-011322

USER NAME = jottano	DESIGNED - CMH	REVISED -
PLOT SCALE = 1" = 10'	DRAWN - SVJ	REVISED -
PLOT DATE = 7/23/2012	CHECKED - JLP	REVISED -
	DATE - 5/29/12	REVISED -

**STATE OF ILLINOIS
 DEPARTMENT OF TRANSPORTATION**

**PROPOSED CROSS SECTIONS
 RIVER ROAD**

SCALE: 1" = 10' SHEET NO. 55 OF 62 SHEETS STA. 36+42.07 TO STA. 37+00.00

F.A. RTE. 3860	SECTION 09-00372-00-PW	COUNTY MCHEMERY	TOTAL SHEETS 252
		CONTRACT NO.	245
		ILLINOIS FED. AID PROJECT	63633