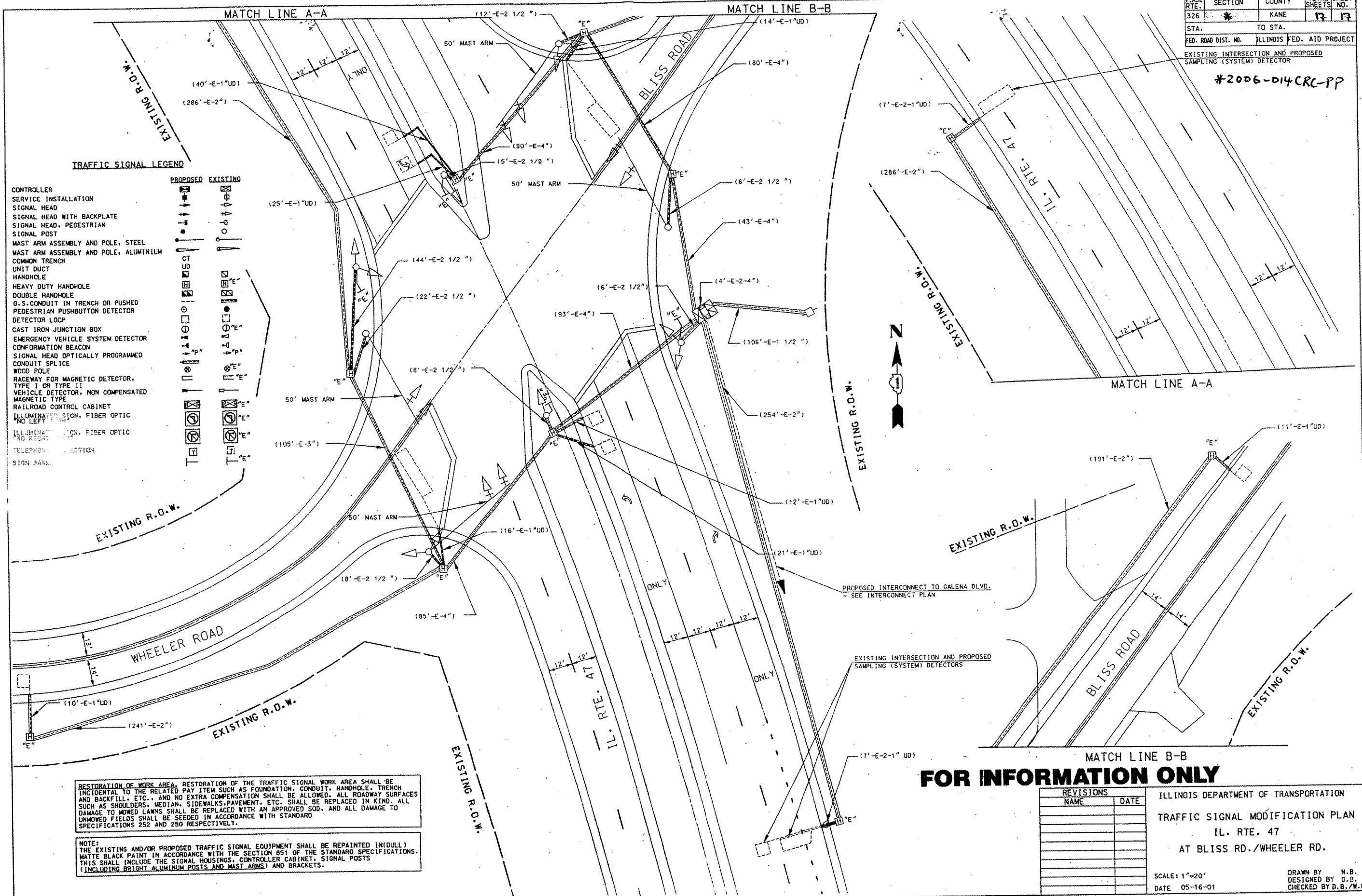


F.A.R. RTE.	SECTION	COUNTY	TOTAL SHEETS	SHEET NO.
326	*	KANE	17	17
STA.	TO STA.			
FED. ROAD DIST. NO.	ILLINOIS FED. AID PROJECT			

EXISTING INTERSECTION AND PROPOSED SAMPLING (SYSTEM) DETECTORS  
 #2006-D14CRC-PP



**TRAFFIC SIGNAL LEGEND**

CONTROLLER	PROPOSED	EXISTING
SERVICE INSTALLATION	[Symbol]	[Symbol]
SIGNAL HEAD	[Symbol]	[Symbol]
SIGNAL HEAD WITH BACKPLATE	[Symbol]	[Symbol]
SIGNAL HEAD, PEDESTRIAN	[Symbol]	[Symbol]
SIGNAL POST	[Symbol]	[Symbol]
MAST ARM ASSEMBLY AND POLE, STEEL	[Symbol]	[Symbol]
MAST ARM ASSEMBLY AND POLE, ALUMINIUM	[Symbol]	[Symbol]
COMMON TRENCH	[Symbol]	[Symbol]
UNIT DUCT	[Symbol]	[Symbol]
HANDHOLE	[Symbol]	[Symbol]
HEAVY DUTY HANDHOLE	[Symbol]	[Symbol]
DOUBLE HANDHOLE	[Symbol]	[Symbol]
G.S. CONDUIT IN TRENCH OR PUSHED	[Symbol]	[Symbol]
PEDESTRIAN PUSHBUTTON DETECTOR	[Symbol]	[Symbol]
DETECTOR LOOP	[Symbol]	[Symbol]
CAST IRON JUNCTION BOX	[Symbol]	[Symbol]
EMERGENCY VEHICLE SYSTEM DETECTOR	[Symbol]	[Symbol]
CONFORMATION BEACON	[Symbol]	[Symbol]
SIGNAL HEAD OPTICALLY PROGRAMMED	[Symbol]	[Symbol]
CONDUIT SPLICE	[Symbol]	[Symbol]
WOOD POLE	[Symbol]	[Symbol]
RACEWAY FOR MAGNETIC DETECTOR, TYPE I OR TYPE II	[Symbol]	[Symbol]
VEHICLE DETECTOR, NON COMPENSATED MAGNETIC TYPE	[Symbol]	[Symbol]
RAILROAD CONTROL CABINET	[Symbol]	[Symbol]
ILLUMINATED SIGN, FIBER OPTIC NO LEFT TURN	[Symbol]	[Symbol]
ILLUMINATED SIGN, FIBER OPTIC NO RIGHT TURN	[Symbol]	[Symbol]
TELEPHONE CONNECTION	[Symbol]	[Symbol]
SIGN PANEL	[Symbol]	[Symbol]

RESTORATION OF WORK AREA, RESTORATION OF THE TRAFFIC SIGNAL WORK AREA SHALL BE INCIDENTAL TO THE RELATED PAY ITEM SUCH AS FOUNDATION, CONDUIT, HANDHOLE, TRENCH AND BACKFILL, ETC., AND NO EXTRA COMPENSATION SHALL BE ALLOWED. ALL ROADWAY SURFACES SUCH AS SHOULDERS, MEDIAN, SIDEWALKS, PAVEMENT, ETC. SHALL BE REPLACED IN KIND. ALL DAMAGE TO MOWED LAWNS SHALL BE REPLACED WITH AN APPROVED SOD, AND ALL DAMAGE TO UNMOWED FIELDS SHALL BE SEEDED IN ACCORDANCE WITH STANDARD SPECIFICATIONS 252 AND 250 RESPECTIVELY.

NOTE: THE EXISTING AND/OR PROPOSED TRAFFIC SIGNAL EQUIPMENT SHALL BE REPAINTED (IN DULL) MATTE BLACK PAINT IN ACCORDANCE WITH THE SECTION 851 OF THE STANDARD SPECIFICATIONS. THIS SHALL INCLUDE THE SIGNAL HOUSINGS, CONTROLLER CABINET, SIGNAL POSTS (INCLUDING BRIGHT ALUMINIUM POSTS AND MAST ARMS) AND BRACKETS.

**FOR INFORMATION ONLY**

REVISIONS	
NAME	DATE

ILLINOIS DEPARTMENT OF TRANSPORTATION  
 TRAFFIC SIGNAL MODIFICATION PLAN  
 IL. RTE. 47  
 AT BLISS RD./WHEELER RD.  
 SCALE: 1"=20'  
 DATE 05-16-01  
 DRAWN BY N.B.  
 DESIGNED BY D.B.  
 CHECKED BY D.B./M.M.