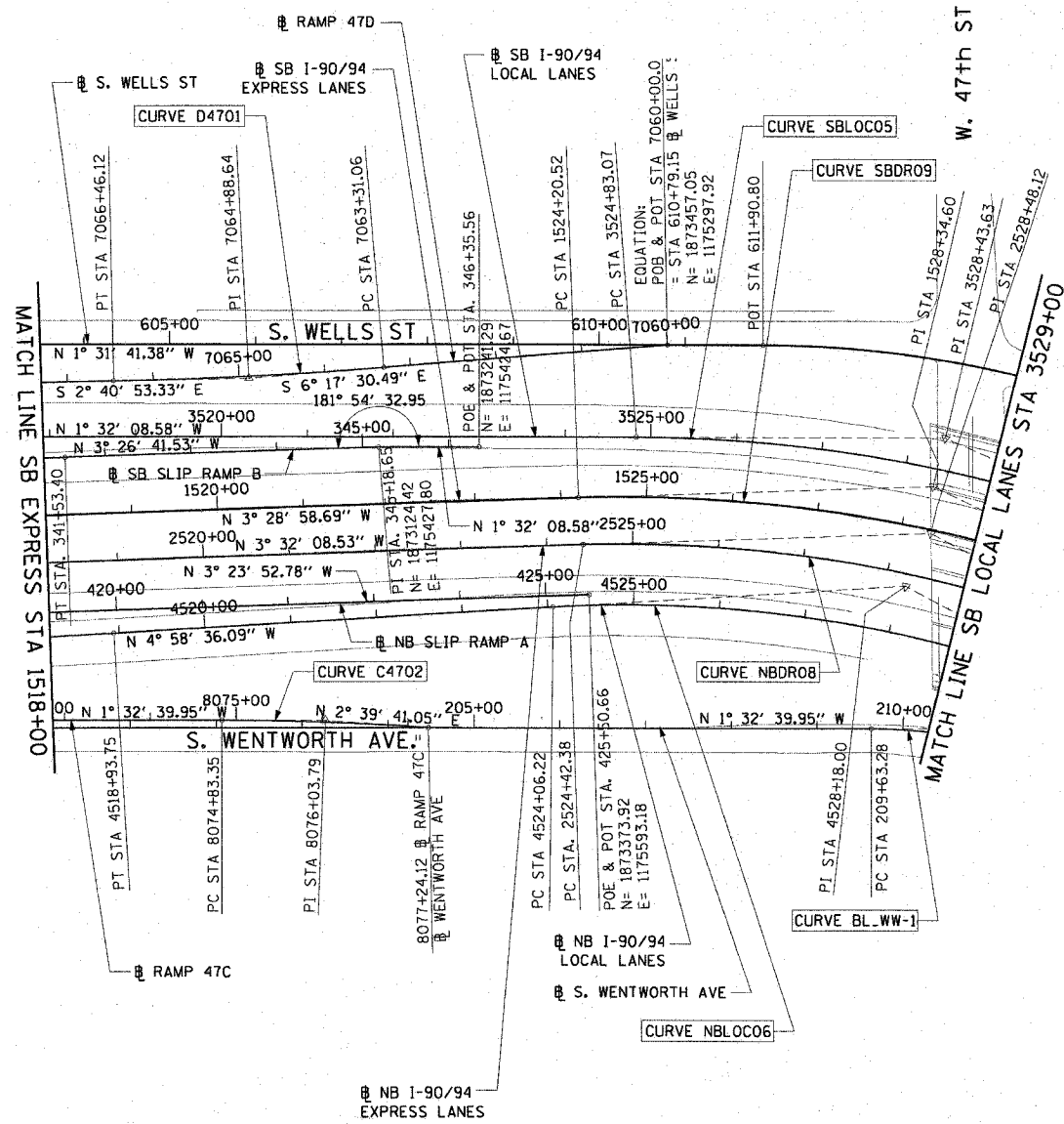


F.A.I. RTE.	SECTION	COUNTY	TOTAL SHEETS	SHEET NO.
90/94		COOK	588	42
STA.	TO STA.			
FED. ROAD DIST. NO. 1	ILLINOIS	FED. AID PROJECT		
62303	(2021-922 PT2 ETC	2324.6-1P) R-11		



CURVE D4701
P.I. STA= 7064+88.64
N= 1,872,971.35
E= 1,175,351.47
Δ= 3° 36' 37"
D= 1° 08' 45"
R= 5000.00'
T= 157.58'
L= 315.06'
E= 2.48'
e= N/A
T.R.= N/A
S.E. RUN= N/A
P.C. STA= 7063+31.06
N= 1,873,127.98
E= 1,175,334.20
P.T. STA= 7066+46.12
N= 1,872,813.94
E= 1,175,358.84

CURVE C4702
P.I. STA= 8076+03.79
N= 1,873,070.73
E= 1,175,748.43
Δ= 4° 12' 21"
D= 1° 44' 49"
R= 3280.00'
T= 120.44'
L= 240.77'
E= 2.21'
e= N/A
T.R.= N/A
S.E. RUN= N/A
P.C. STA= 8074+83.35
N= 1,872,950.33
E= 1,175,751.68
P.T. STA= 8077+24.12
N= 1,873,191.04
E= 1,175,754.03

CURVE SBLOC05
P.I. STA = 3528+43.63
N= 1,873,784.42
E= 1,175,398.10
Δ = 23° 47' 11" (RT)
D = 3° 20' 48"
R = 1,712.00'
T = 360.56'
L = 710.73'
E = 37.56'
e = 5.7%
S.A. = STA 3522+04.49 TO STA 3526+01.07
T.R. = 42.58'
S.E. RUN = 354.00'
S.R. = BEGIN CONTINUOUSLY ROTATING PLANE AT STA 3530+92.51
P.C. STA = 3524+83.07
N= 1,873,423.99
E= 1,175,407.76
P.T. STA = 3531+93.80
N= 1,874,118.14
E= 1,175,534.63

CURVE SBDR09
P.I. STA = 1528+34.60
N= 1,873,771.86
E= 1,175,455.52
Δ = 27° 22' 45" (RT)
D = 3° 22' 13"
R = 1,700.00'
T = 414.09'
L = 812.35'
E = 49.71'
e = 5.7%
S.A. = STA 1521+84.22 TO STA 1525+21.75
T.R. = 33.53'
S.E. RUN = 304.00'
S.R. = BEGIN CONTINUOUSLY ROTATING PLANE AT STA 1531+40.60
P.C. STA = 1524+20.52
N= 1,873,358.54
E= 1,175,480.67
P.T. STA = 1532+32.87
N= 1,874,150.45
E= 1,175,623.26

CURVE NBDRO8
P.I. STA = 2528+48.12
N= 1,873,770.44
E= 1,175,510.19
Δ = 29° 20' 17" (RT)
D = 3° 41' 47"
R = 1,550.00'
T = 405.74'
L = 793.68'
E = 52.23'
e = 5.9%
S.A. = STA 2521+65.07 TO STA 2525+47.05
T.R. = 67.98'
S.E. RUN = 314.00'
S.R. = BEGIN CONTINUOUSLY ROTATING PLANE AT STA 2531+59.12
P.C. STA = 2524+42.38
N= 1,873,365.47
E= 1,175,535.22
P.T. STA = 2532+36.06
N= 1,874,135.73
E= 1,175,686.80

CURVE NBLOC06
P.I. STA = 4528+18.00
N= 1,873,742.76
E= 1,175,572.51
Δ = 30° 46' 45" (RT)
D = 3° 49' 48"
R = 1,496.00'
T = 411.77'
L = 803.65'
E = 55.64'
e = 5.9%
S.A. = STA 4521+22.64 TO STA 4525+10.89
T.R. = 74.25'
S.E. RUN = 314.00'
S.R. = BEGIN CONTINUOUSLY ROTATING PLANE AT STA 4531+18.51
P.C. STA = 4524+06.22
N= 1,873,332.54
E= 1,175,608.23
P.T. STA = 4532+09.87
N= 1,874,113.48
E= 1,175,751.74

NOTES:

- AVERAGE GRID TO GROUND CONVERSION FACTOR = 1.000010988654360
- FOR BENCH MARK INFORMATION, SEE SHEET 1 OF ALIGNMENT PLAN SHEETS.

REVISIONS	
NAME	DATE

ILLINOIS DEPARTMENT OF TRANSPORTATION
F.A.I. 90/94 (DAN RYAN EXPRESSWAY)
GARFIELD BLVD TO 31ST STREET (SB LOCAL LANES)
ALIGNMENT PLAN

SCALE: 1"=100'
DATE: June 9, 2006
DRAWN BY: NJH/AMM
CHECKED BY: JAL/MS

CTE | AECOM

ALT-7
6/7/2006 12:56:3 PM