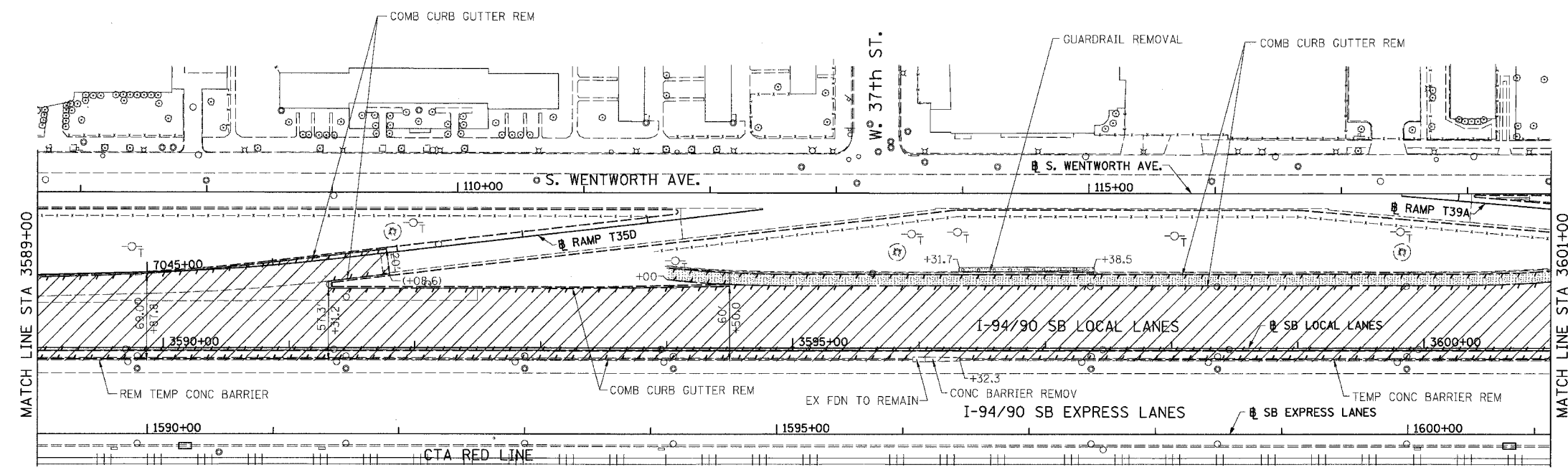
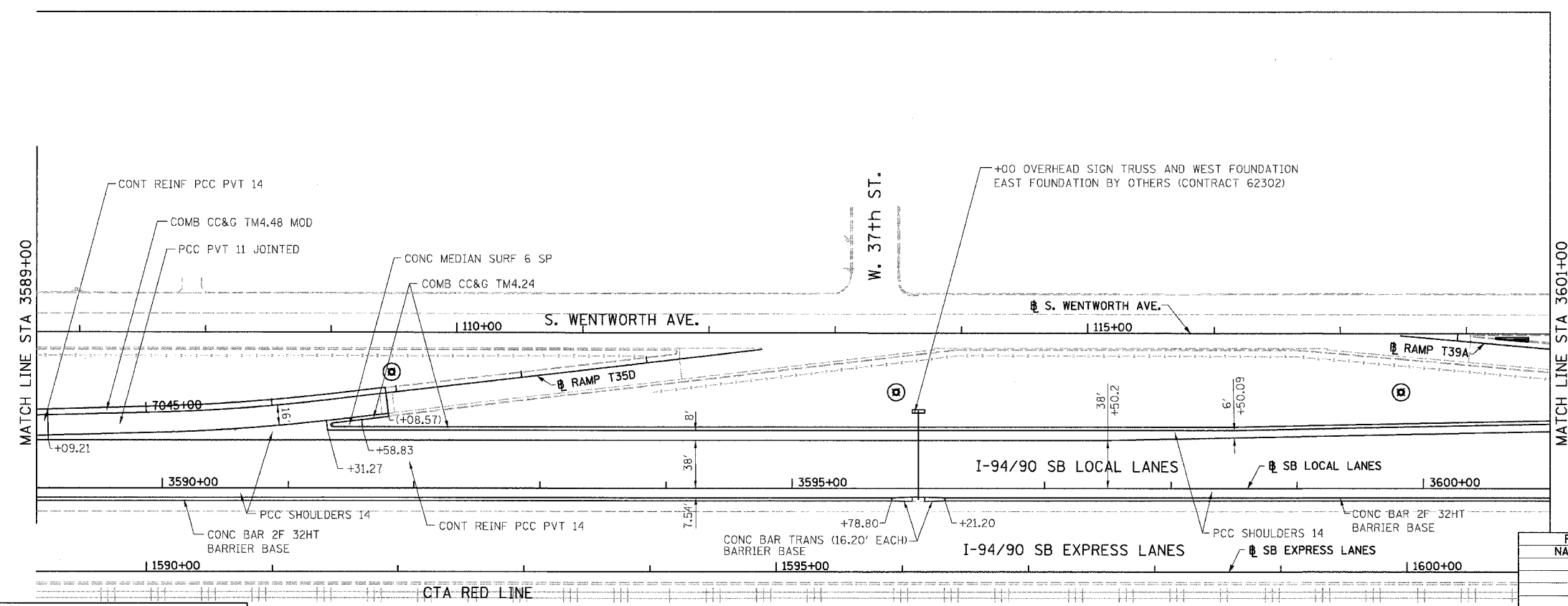


F.A.I.	SECTION	COUNTY	TOTAL SHEETS	SHEET NO.
94/90	*	COOK	588	63
STA.	TO STA.			
FED. ROAD DIST. NO.	ILLINOIS	FED. AID PROJECT		
62303 • (2021-922 PT2 ETC 2324.6-1P) R-11				



- LEGEND:
- PAVEMENT REMOVAL
 - PAVED SHOULDER REMOVAL
 - LINEAR REMOVALS
 - SPOT REMOVAL
 - EX HIGH MAST TOWER LOCATION - SEE HIGH MAST TOWER SCHEDULE FOR DETAILS

EXISTING CONDITIONS AND REMOVAL
PROPOSED IMPROVEMENTS



- LEGEND:
- HIGH MAST LIGHT TOWER LOCATION - SEE HIGH MAST TOWER SCHEDULE FOR DETAILS

- NOTES:
1. STATION CALLOUTS ARE FROM THE NB I-94/90 LOCAL LANES BASELINE UNLESS OTHERWISE NOTED.
 2. SEE ROADWAY DETAILS FOR CONCRETE BARRIER TRANSITIONS AT BRIDGE PIERS AND SIGN STRUCTURES.
 3. SEE ALIGNMENT PLANS FOR CURVE DATA.
 4. SHOULDER RUMBLE STRIPS SHALL BE CONSTRUCTED IN THE PROPOSED AND EXISTING SHOULDERS OF THE LOCAL AND EXPRESS LANES ACCORDING TO IDOT STANDARD 64200L.
 5. SEE SIGNING PLANS FOR PROPOSED OVERHEAD SIGN LOCATIONS AND DETAILS.



REVISIONS	
NAME	DATE

RDY-12
ILLINOIS DEPARTMENT OF TRANSPORTATION
F.A.I. 94/90 (DAN RYAN EXPRESSWAY)
GARFIELD BLVD TO 31ST STREET (SB LOCAL LANES)
EXISTING AND PROPOSED ROADWAY PLANS

SCALE: 1"=50'
DATE: 06/09/06
DRAWN BY: JDC
CHECKED BY: RS

BOWMAN, BARRETT & ASSOCIATES INC.
CONSULTING ENGINEERS
Chicago, Illinois
312.228.0100
www.bbainc.com

6/18/2006 10:57:15 AM