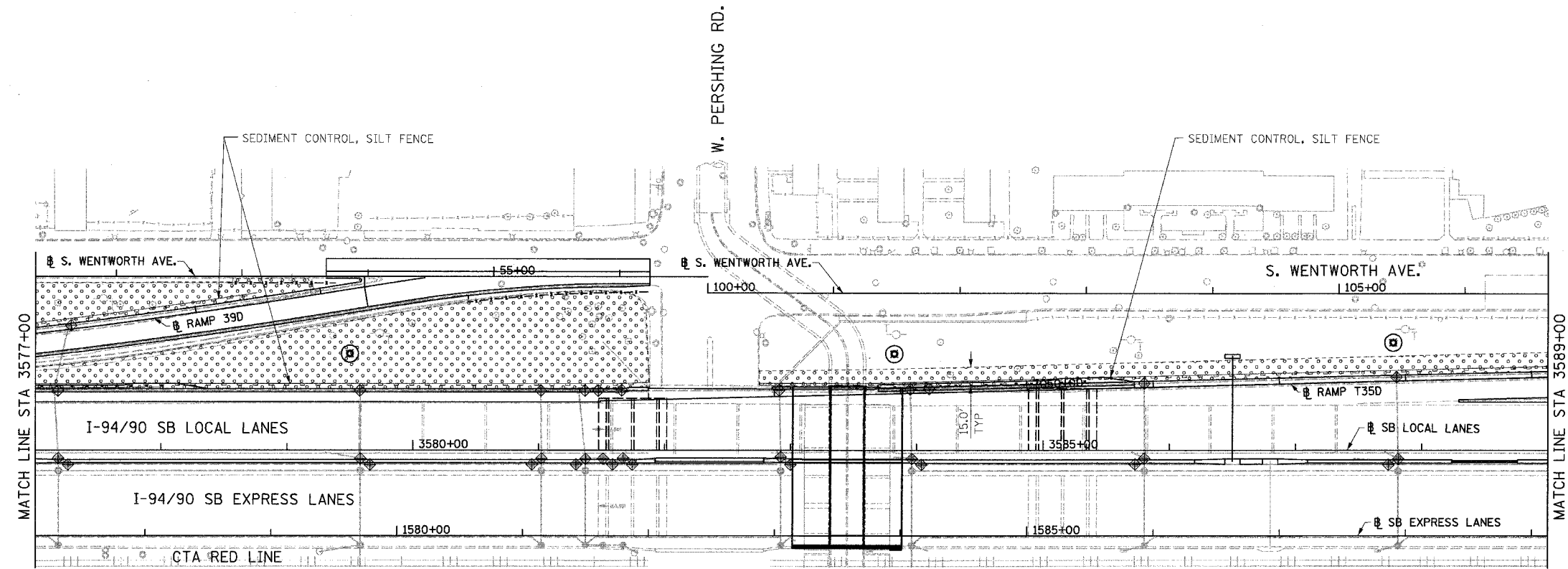
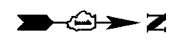
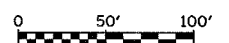
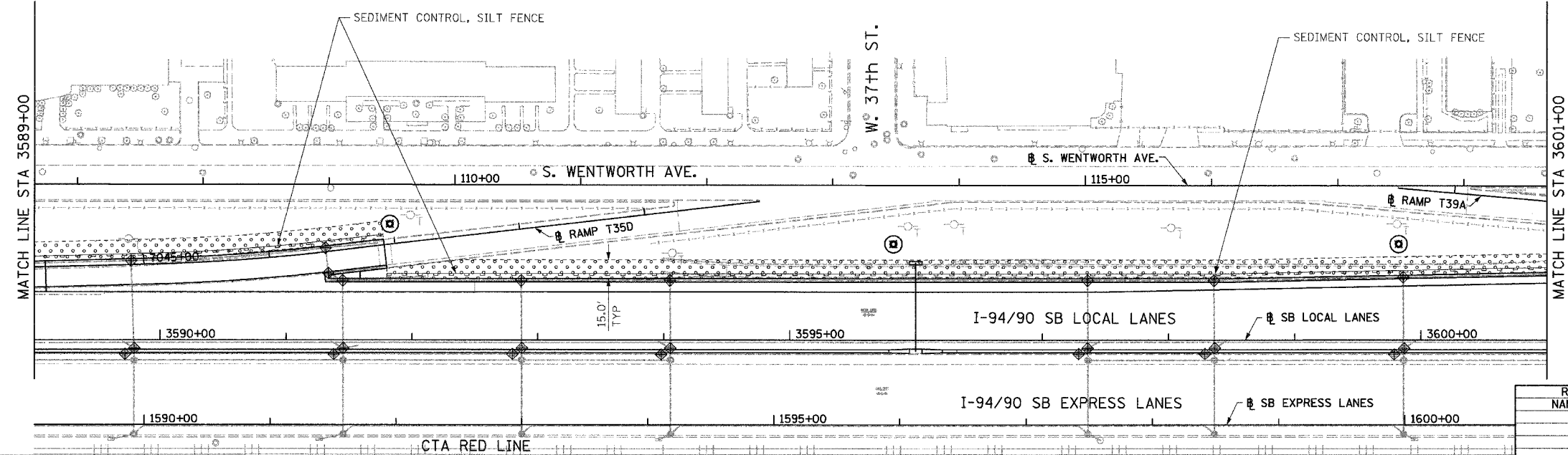


F.A.I.	SECTION	COUNTY	TOTAL SHEETS	SHEET NO.
94/90	*	COOK	588	131
STA.	TO STA.			
FED. ROAD DIST. NO.	ILLINOIS FED. AID PROJECT			
62303	*12021-922 PT2 ETC 2324.6-1P1 R-11			



- LEGEND:**
- INLET FILTER
  - SEDIMENT CONTROL, SILT FENCE
  - TEMPORARY DITCH CHECKS
  - TEMPORARY EROSION CONTROL SEEDING



ERO-06

REVISIONS	
NAME	DATE

ILLINOIS DEPARTMENT OF TRANSPORTATION  
 F.A.I. 94/90 (DAN RYAN EXPRESSWAY)  
 GARFIELD BLVD TO 31ST STREET (SB LOCAL LANES)

**EROSION CONTROL PLAN**

SCALE: 1"=50'  
 DATE: 06/09/06

DRAWN BY: RR  
 CHECKED BY: RS

BOWMAN, BARRETT & ASSOCIATES INC  
 CONSULTING ENGINEERS  
 Chicago, Illinois  
 312.228.0100  
 www.bbainc.com



F:\62303\94\90\9490\_SHEETS\6601\_131C01.dwg 11/27/2006 6/8/2006