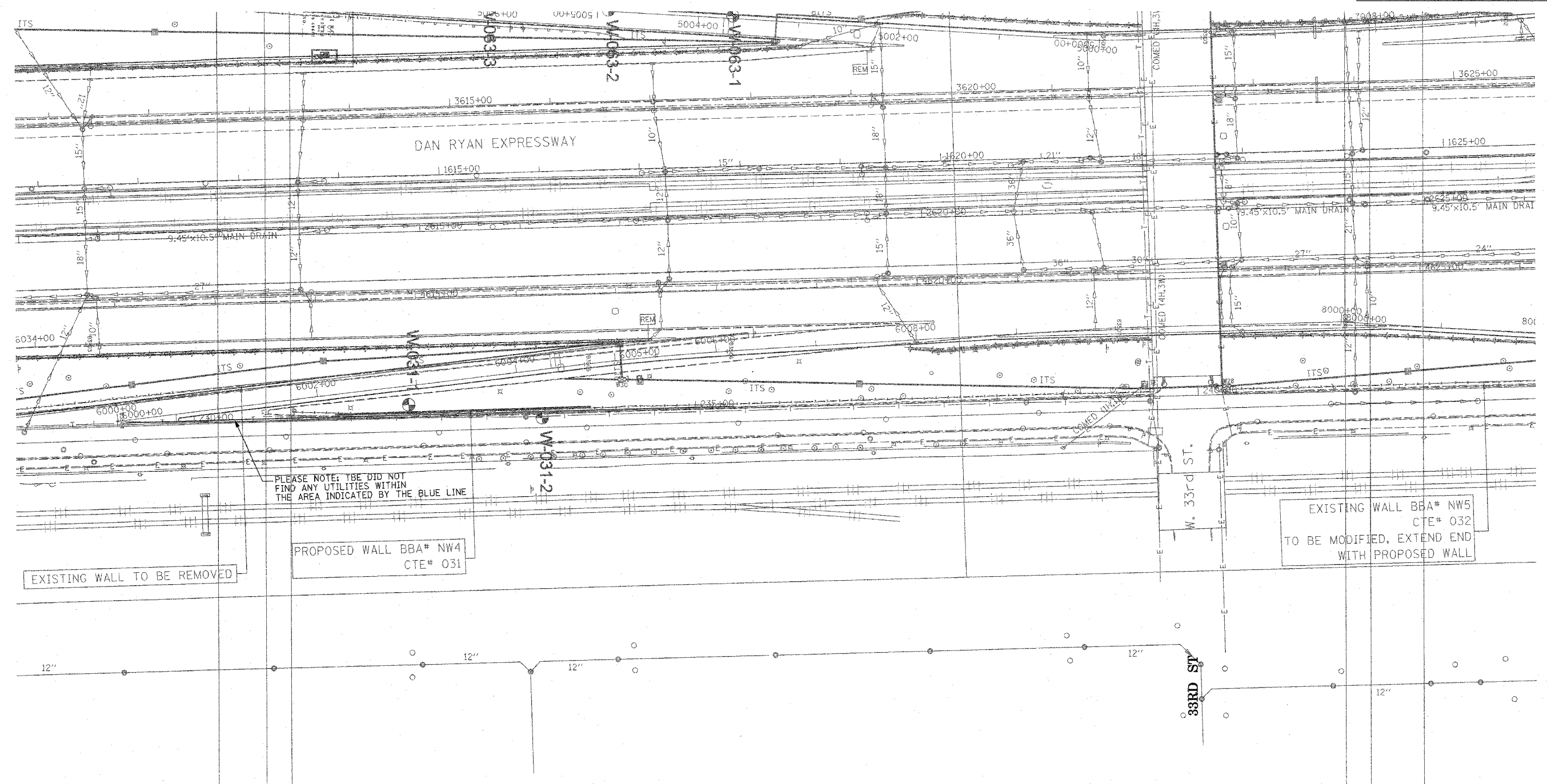
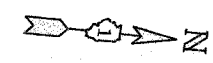


F.A. RTE.	SECTION	COUNTY	TOTAL SHEETS	SHEET NO.
	0516J,1717 & 1818-6	Cook	588	202
STA.		TO STA.		
FED. ROAD DIST. NO.		ILLINOIS FED. AID PROJECT		



PLEASE NOTE: TBE DID NOT FIND ANY UTILITIES WITHIN THE AREA INDICATED BY THE BLUE LINE

EXISTING WALL TO BE REMOVED

PROPOSED WALL BBA# NW4  
CTE# 031

EXISTING WALL BBA# NW5  
CTE# 032  
TO BE MODIFIED, EXTEND END WITH PROPOSED WALL



**TBE GROUP, INC.**  
CIVIL ENGINEERING \* TRANSPORTATION \* ENVIRONMENTAL  
\* PLANNING \* UTILITY ENGINEERING/LOCATING  
SOUTHERN REGION: FL, GA, SC, NC  
NORTHERN REGION: IL, IN, MI, OH, MD, NJ, NY  
PA, VA, CANADA  
WESTERN REGION: AZ, NV, NM, TX, CA, OR, UT, WA

IL09500164, 167, 168, 170, 171, 179, 180, 182, 204,  
205, 206, 211, 212, 219, 221, 225, 226, 227, 228, 230, 232  
TBE SUE PAGE NO: 35 of 36  
Checked by: *[Signature]*  
SUE Quality Level "A" : Test Holes  
SUE Quality Level "B" : Designating

—TS—	—TS—	TRAFFIC SIGNAL
—SL—	—SL—	STREET LIGHT
—COCE—	—COCE—	CITY OF CHICAGO ELECTRIC
—T—	—T—	TELEPHONE
—W—	—W—	WATER
—G—	—G—	GAS
—CTV—	—CTV—	CABLE TELEVISION
—FO—	—FO—	FIBER OPTIC
—E—	—E—	ELECTRIC
⊙	⊙	TEST HOLE

Utilities shown on these plans as depicted in the legend have been investigated by TBE Group, Inc in accordance with SUE Industry Standards. All other information shown has been provided to TBE Group, Inc by others.

TBE could not locate buried utilities directly beneath the expressway due to traffic and safety issues.

205 W. WACKER DRIVE  
SUITE 1020  
CHICAGO, IL 60606  
(312) 704-1970

REVISIONS	
NAME	DATE

ILLINOIS DEPARTMENT OF TRANSPORTATION  
SUE Investigation of Underground Utilities  
I-90/I-94 Dan Ryan Expressway from I-57 to 69th Street  
Contract Number: 62590, 62592, 62594  
DRAWN BY : KLC  
SCALE : 1" = 50'  
SOL "B" DATE : 7/22/04