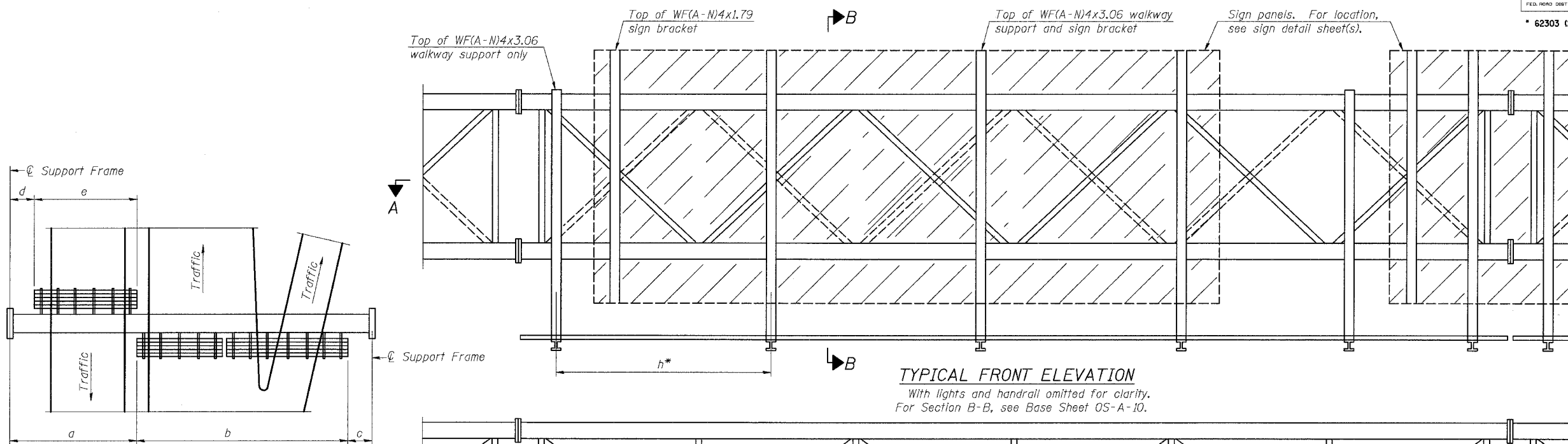


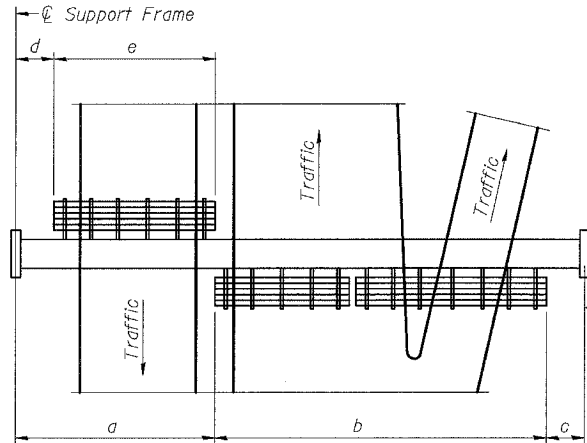
STATE OF ILLINOIS
DEPARTMENT OF TRANSPORTATION

ROUTE NO.	SECTION	COUNTY	TOTAL SHEETS	SHEET
94/90	*	COOK	588	275
FED. ROAD DIST. NO. 1		ILLINOIS	FED. AID PROJECT	

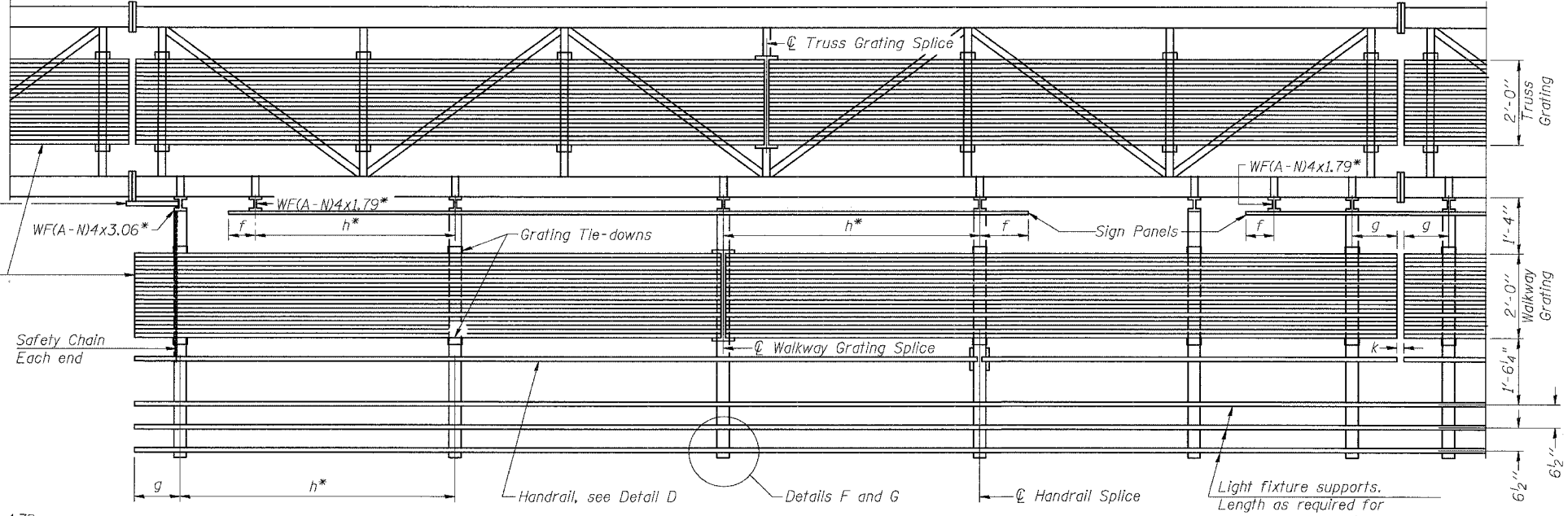
* 62303 (2021-922 PT2 ETC 2324.6-1P) R-11



TYPICAL FRONT ELEVATION
With lights and handrail omitted for clarity.
For Section B-B, see Base Sheet OS-A-10.



PLAN WALKWAY AND HANDRAIL SKETCH
(Road plan beneath truss varies)



SECTION A-A

Handrail and walkway shall span a minimum of three brackets between splices and/or gap joints. Place all sign and walkway brackets as close to panel points as practical. Grating, handrail and light support splices placed as needed.

Walkway and Truss Grating width dimensions are nominal and may vary ±1/2" based on available standard widths.

BRACKET TABLE

Sign Width		Number Brackets Required
Greater Than	Less Than or Equal To	
	8'-0"	2
8'-0"	14'-0"	3
14'-0"	20'-0"	4
20'-0"	26'-0"	5
26'-0"	32'-0"	6

WF(A-N)4x1.79 or WF(A-N)4x3.06
ASTM B308, Alloy 6061-T6

** Alternate angle for safety chain attachment
Standard Aluminum Grating, see Details T and W

Notes:
* Space walkway brackets WF*A-N*4x3.06 and sign brackets WF*A-N*4x1.79 for efficiency and within limits shown:

f = 12" maximum, 4" minimum *End of sign to * of nearest bracket*
g = 12" maximum, 4" minimum *End of walkway grating to * of nearest support bracket*
h = 6'-0" maximum ** to * sign and/or walkway support brackets, WF*A-N*4x1.79 or WF*A-N*4x3.06*
k = 2" maximum gap between adjacent walkway grating sections and handrail ends

** If walkway bracket at safety chain location is behind sign, add angle to bracket, see Alternate Safety Chain Attachment on Base Sheet OS-A-11.

For Details T and W, Section B-B and Grating Splice Details, see Base Sheet OS-A-10.
For Details D, F, G and P and Handrail Splice Details, see Base Sheet OS-A-11.

Structure Number	Station	a	b	c	d	e	Walkway Grating and Handrail Lengths
ISO16I094R057.1	3511+00.00	14.83'	54.0'	21.17'	---	---	54.0'
ISO16I094R057.4	3493+30.00	6.20'	40.0'	19.80'	---	---	40.0'
ISO16I094R056.8	3524+00.00	8.21'	55.5'	19.29'	---	---	55.5'
ISO16I094R056.67	3532+00	6.0'	60.25'	18.75'	---	---	60.25'
ISO16I094R056.47	3543+00	6.87'	56.5'	17.63'	---	---	56.5'
ISO16I094R056.02	3566+30	7.58'	52.0'	15.42'	---	---	52.0'
ISO16I094R055.46	3596+00	8.87'	42.0'	19.13'	---	---	42.0'
ISO16I094R055.08	3616+00	10.87'	52.0'	10.13'	---	---	52.0'

DESIGNED	MSA
CHECKED	AS
DRAWN	RV
CHECKED	MSA

EXAMINED	20
PASSED	ENGINEER OF STRUCTURAL SERVICES
	ENGINEER OF BRIDGES AND STRUCTURES

NUMBER	REVISION	DATE

OS-A-9 1-7-05

SGN-25

**OVERHEAD SIGN STRUCTURES
ALUMINUM WALKWAY DETAILS**

ILLINOIS DEPARTMENT OF TRANSPORTATION
F.A.I. 94/90 (DAN RYAN EXPRESSWAY)
GARFIELD BLVD TO 31st STREET (SB LOCAL LANES)

**OVERHEAD SIGN STRUCTURES
(SPAN)**