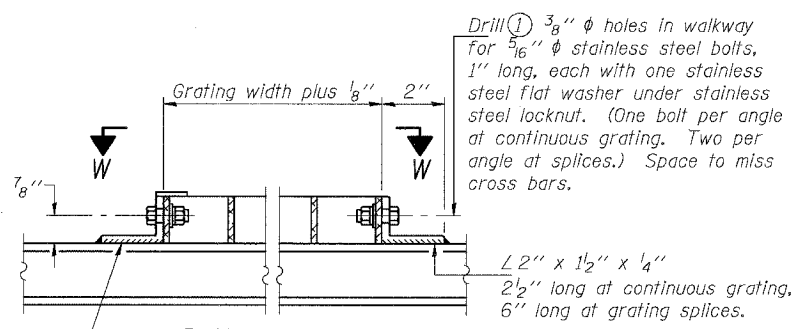
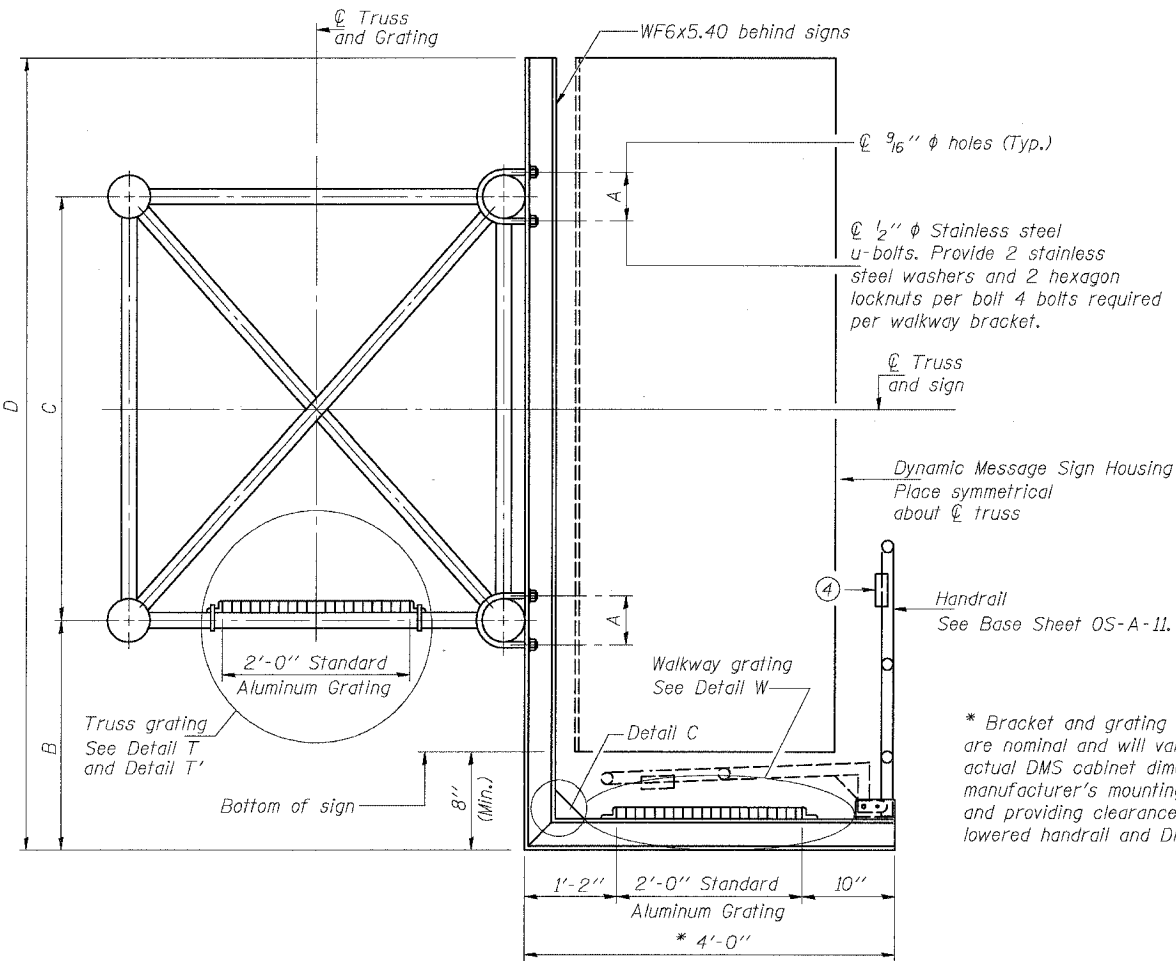


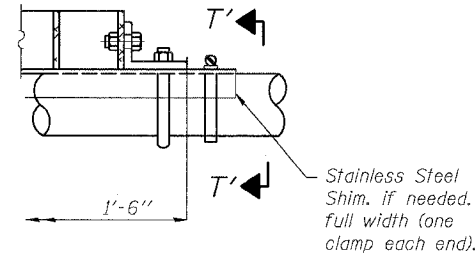
STATE OF ILLINOIS
DEPARTMENT OF TRANSPORTATION

ROUTE NO.	SECTION	COUNTY	TOTAL SHEETS	SHEET NO.
F.A.I. RTE. 90/94		COOK	568	279
FED. ROAD DIST. NO. 1	ILLINOIS	FED. AID PROJECT-		

* 62303 (2021-922 PT2 ETC 2324.6-1P) R-11

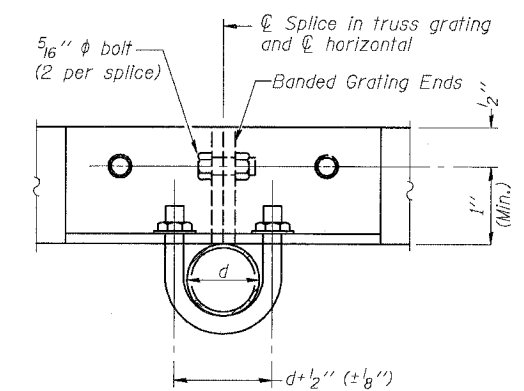


DETAIL W
(Walkway grating)

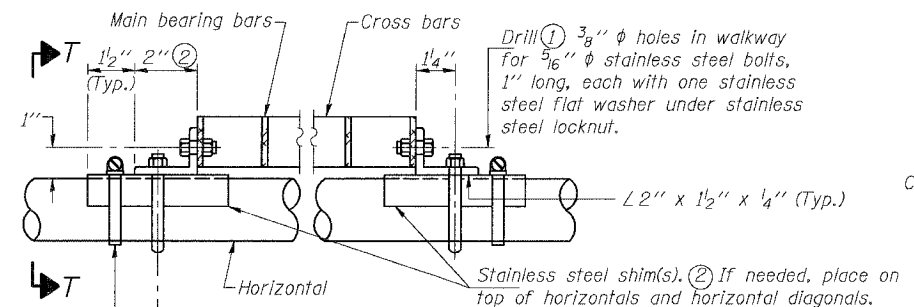


DETAIL T'

(Truss grating splice)
Details not shown same as Detail T.
Alternate materials may be used subject to the Engineer's review and approval.

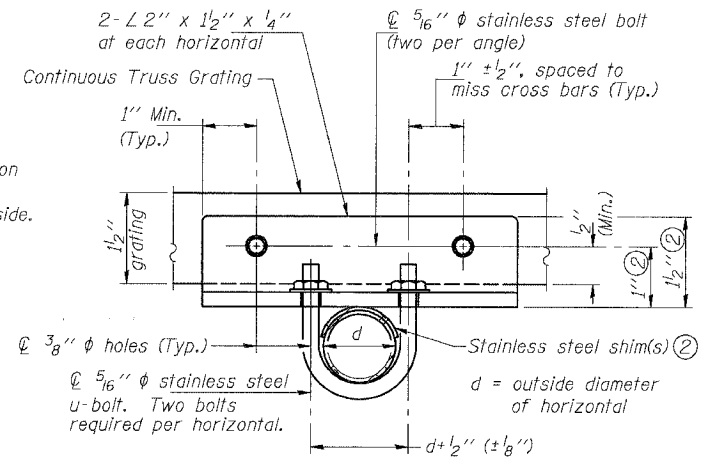


SECTION T'-T'



DETAIL T

(Continuous Truss grating)



SECTION T-T

SPECIFICATIONS FOR STANDARD ALUMINUM GRATING

Main Bearing Bars shall be 3/16\" x 1 1/2\" on 1 3/16\" centers and conform to ASTM B211 Alloy 6061-T6.

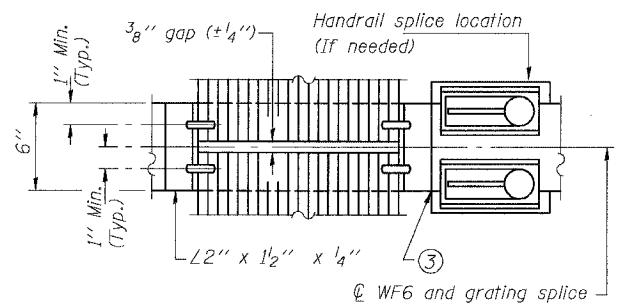
Cross bars shall be 3/16\" x 1 1/2\" on 4\" centers and conform to ASTM B221 Alloy 6063-T5 or 6061-T6.

OR

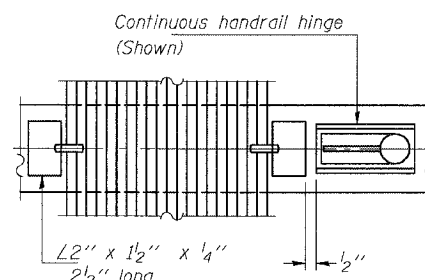
Aluminum Grating with modified \"T\" sections for main bearing bars shall meet the following requirements:

Main bars shall conform to ASTM B221 Alloy 6061-T6 and have a minimum section modulus equal to 0.0705 in.³ per bar, a depth of 1 1/2\", spaced on 1 3/16\" centers.

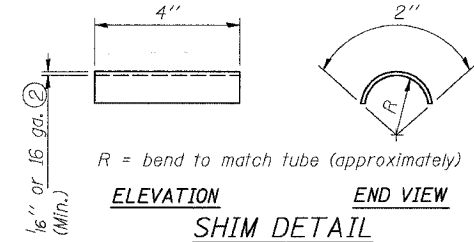
Cross bars shall conform to ASTM B221 Alloy 6063-T5 or T-42 and spaced on 4\" centers.



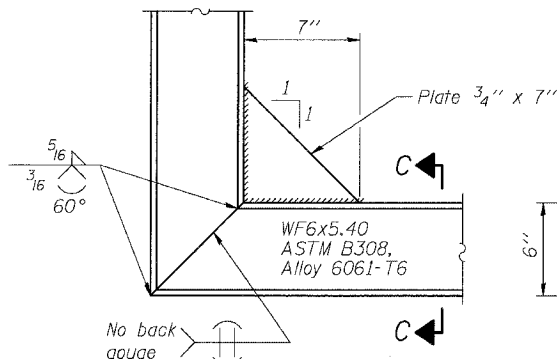
(AT WALKWAY GRATING SPLICE)



SECTION W-W

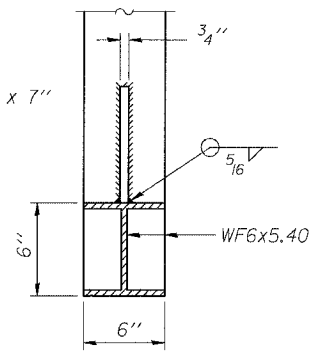


SHIM DETAIL



DETAIL C

(See Detail P, Base Sheet OS-A-11-DMS2.)



SECTION C-C

DESIGNED	MSA
CHECKED	AS/AC
DRAWN	RV
CHECKED	MSA

EXAMINED	ENGINEER OF STRUCTURAL SERVICES
PASSED	ENGINEER OF BRIDGES AND STRUCTURES

NUMBER	REVISION	DATE

**OVERHEAD SIGN STRUCTURES
ALTERNATE ALUMINUM WALKWAY DETAILS**

ILLINOIS DEPARTMENT OF TRANSPORTATION
F.A.I. 94/90 (DAN RYAN EXPRESSWAY)

GARFIELD BLVD TO 31st STREET (SB LOCAL LANES)
OVERHEAD SIGN STRUCTURES
(SPAN)

6/8/2006 12:25:38 PM