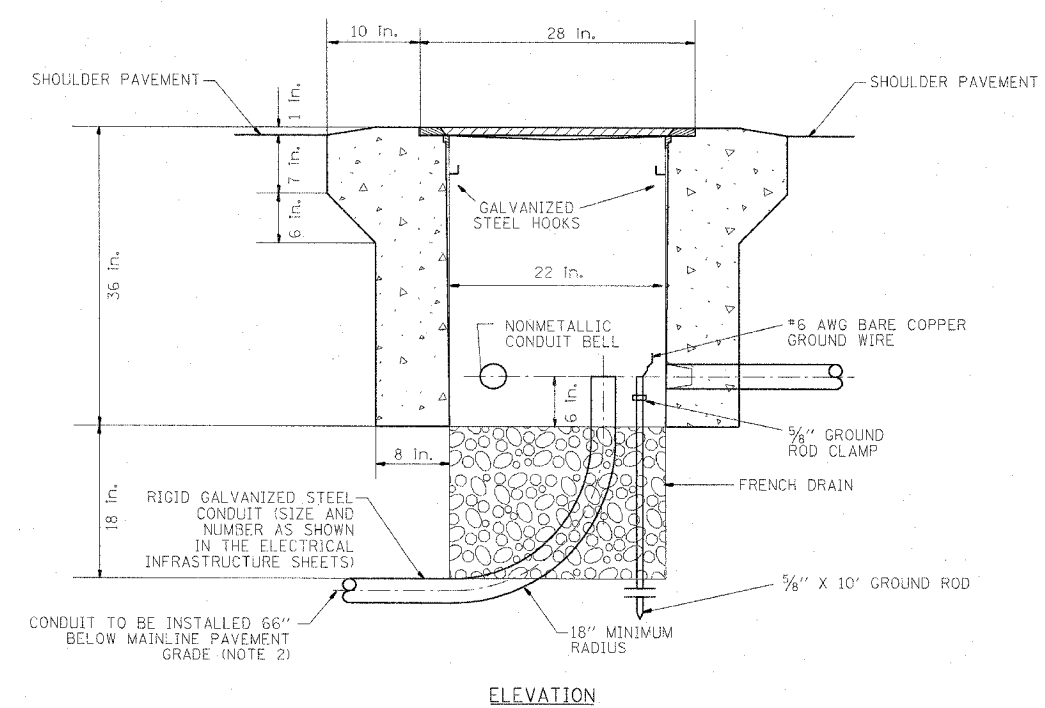
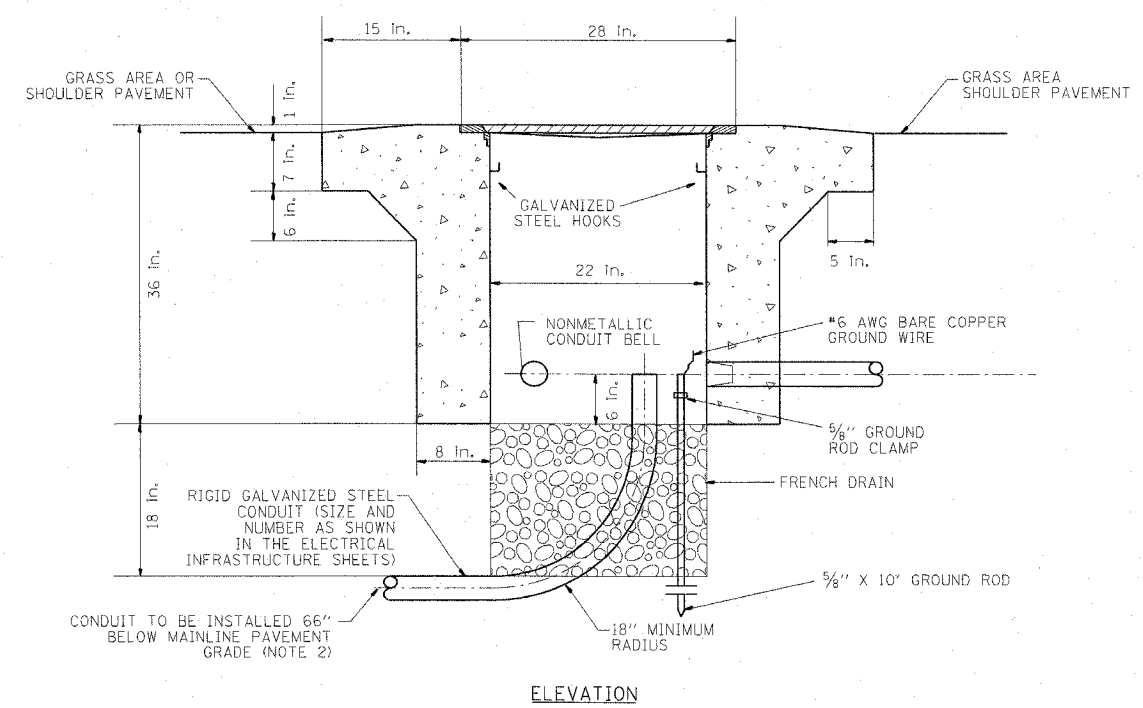
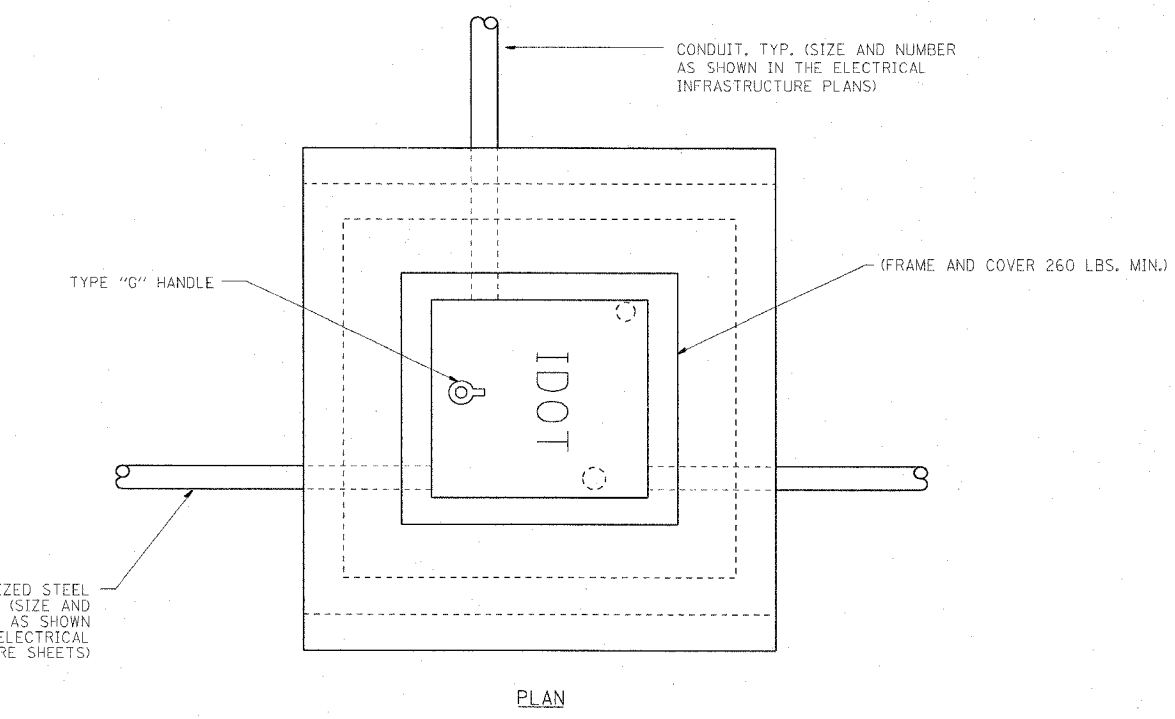
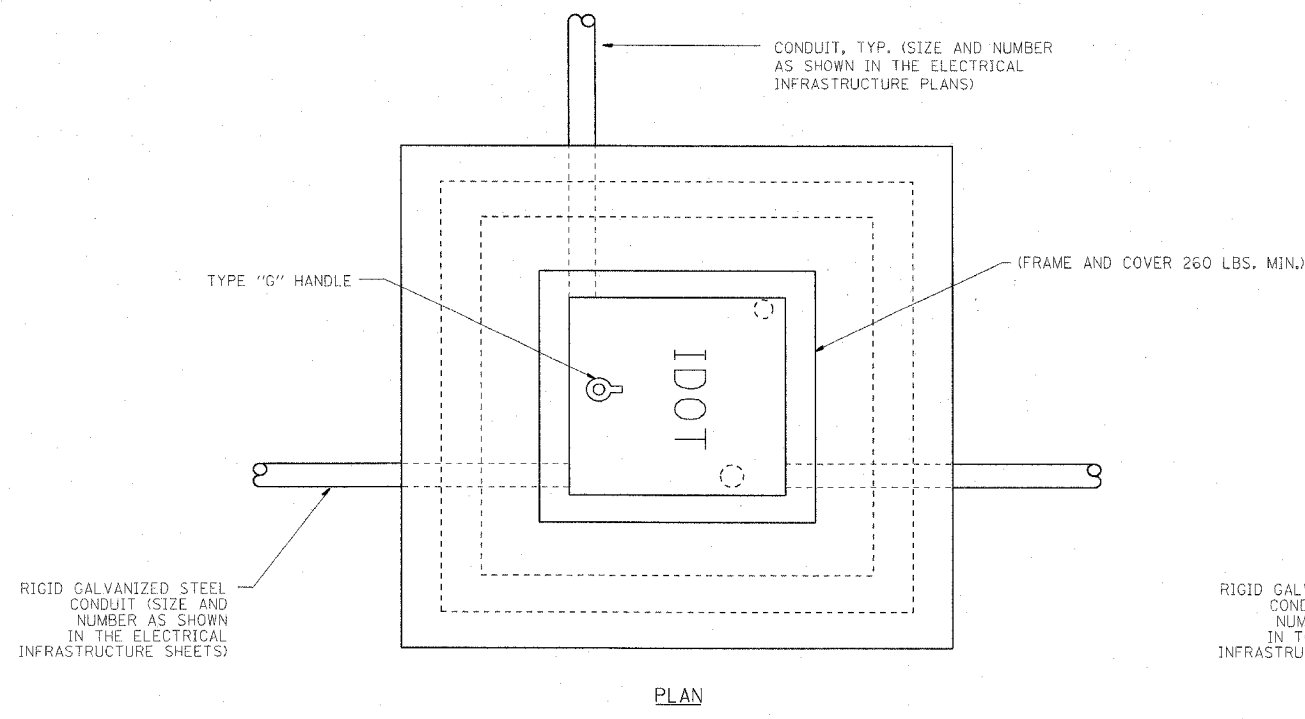


F.A.I. RTE.	SECTION	COUNTY	TOTAL SHEETS	SHEET NO.
90/94	*	COOK	588	337
STA.		TO STA.		
FED. ROAD DIST. NO. 1		ILLINOIS FED. AID PROJECT		
62303		* (2021-922 PT2 ETC 2324.6-1P) R-11		



NOTE:  
 1. ALL METALLIC ELEMENTS SHALL BE GROUND IN ACCORDANCE WITH THE NATIONAL ELECTRIC CODE (NEC), SECTION 250, GROUNDING, METAL COVERS AND OTHER EXPOSED CONDUCTIVE SURFACES SHALL BE BONDED IN ACCORDANCE WITH NEC ARTICLE 250.96 (A).  
 2. CONDUIT TO BE INSTALLED BELOW MAINLINE PAVEMENT WHERE SHOWN IN THE ELECTRICAL INFRASTRUCTURE PLANS (SEE SHEET EI-103).

**PC CONCRETE  
 HEAVY DUTY HANDHOLE, TYPE S1**  
 (FOR INSTALLATION IN SHOULDER WIDER THAN 6' OR BEHIND PAVED AREA)

**PC CONCRETE  
 HEAVY DUTY HANDHOLE, TYPE S1 (SPECIAL)**  
 (FOR INSTALLATION IN SHOULDER NARROWER THAN 6', 4' MINIMUM WIDTH)

REVISIONS	
NAME	DATE

ILLINOIS DEPARTMENT OF TRANSPORTATION  
 F.A.I. 90/94 (DAN RYAN EXPRESSWAY)  
 GARFIELD BLVD TO 31ST STREET (SB LOCAL LANES)  
**PC CONCRETE - HEAVY  
 DUTY HANDHOLE DETAIL,  
 TYPE S1 AND TYPE S1 (SPECIAL)**  
 SCALE: NOT TO SCALE  
 DATE: June 9, 2006  
 DRAWN BY: HAR  
 CHECKED BY: JPC



P:\040468\elec\18-cntrs 18 & 19\contract 18\818\190421.dwg 09:59:00 AM 06/07/2006