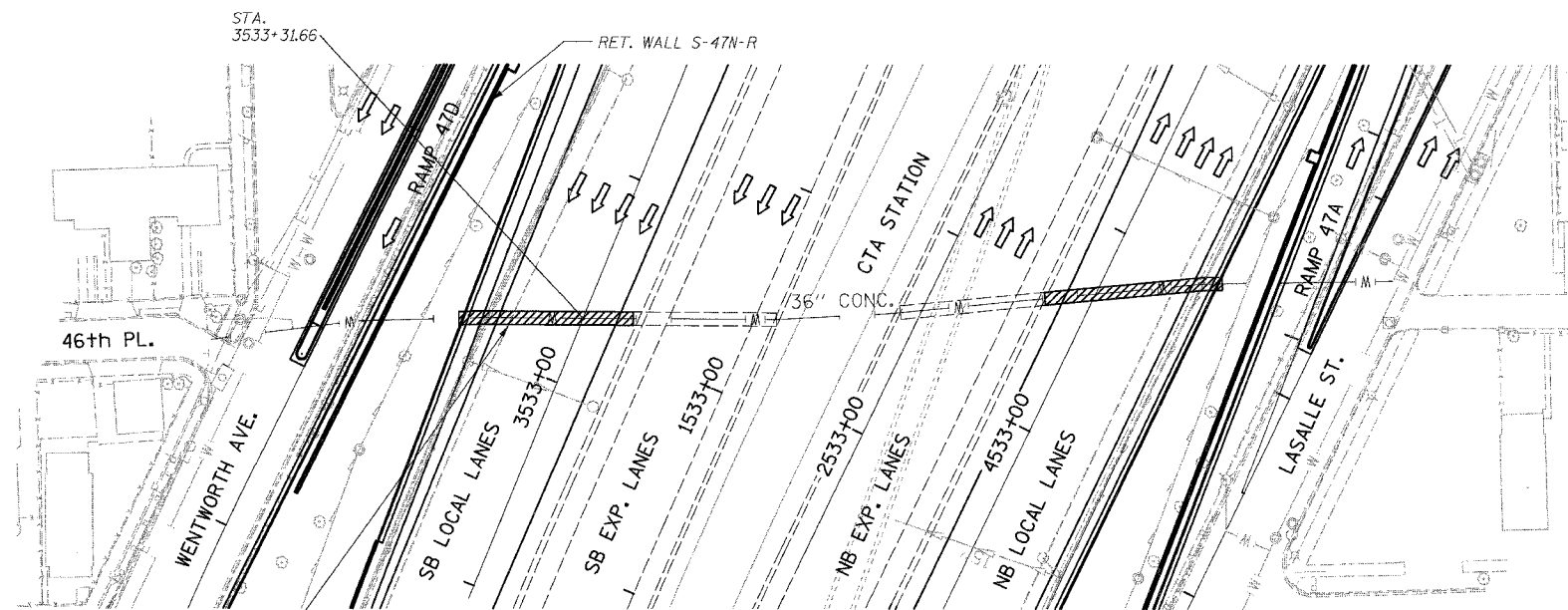
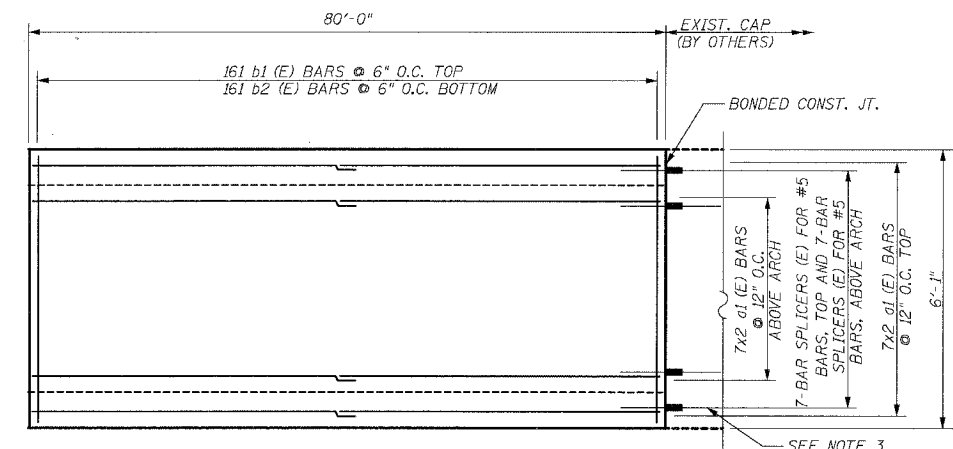


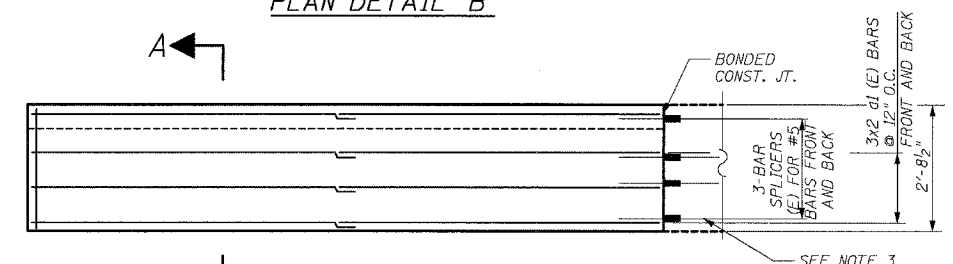
F.A.I.	SECTION	COUNTY	TOTAL SHEETS	SHEET NO.
94/90		COOK	588	365
STA.	TO STA.			
FED. ROAD DIST. NO.	ILLINOIS	FED. AID PROJECT		
62303		(2021-922 FT2 ETC 2324.6-1P) R-11		



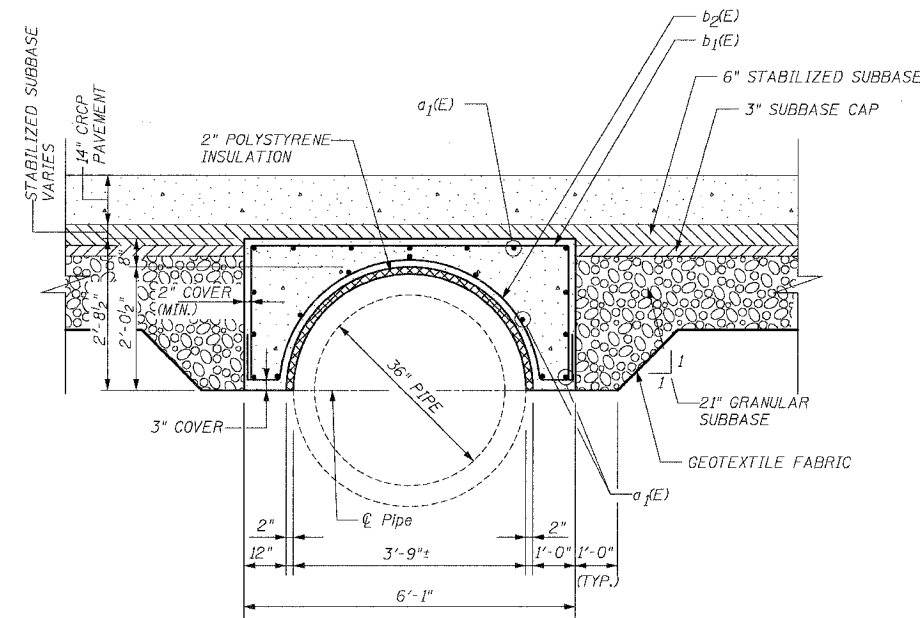
TOPOGRAPHIC PLAN



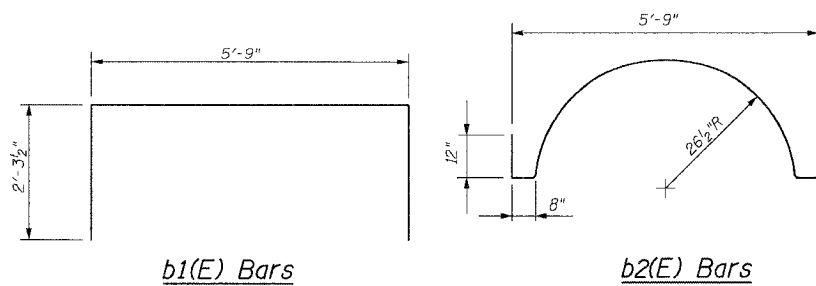
PLAN DETAIL 'B'



ELEVATION 'B'



SECTION A-A



b1(E) Bars

b2(E) Bars

BILL OF MATERIAL

BAR	NO.	SIZE	LENGTH	SHAPE
a1(E)	40	#5	41'-0"	—
b1(E)	161	#5	10'-4"	⌊
b2(E)	161	#5	10'-3"	⌋
REINFORCEMENT BARS, EPOXY COATED			POUNDS	5,170
CONCRETE STRUCTURES			CU. YD.	29.5

NOTES:

- THE 2" POLYSTYRENE INSULATION SHALL BE INCLUDED IN THE COST OF 36" WATER MAIN PROTECTION CAP CONSTRUCTION. THE ESTIMATED QUANTITY IS 472 SQ. FT.
- ADDITIONAL GRANULAR SUB-BASE REQUIRED AS SHOWN IN SECTION A-A OR AS DIRECTED BY ENGINEER WILL BE INCLUDED IN THE COST OF SUB-BASE GRANULAR MATERIAL, TYPE B 24".
- CONTRACTOR SHALL BE PROVIDED BAR SPLICER "TAILS" FROM THE ENGINEER & SHALL INSTALL THEM IN PREVIOUSLY PLACED THREADED COUPLERS. CLEAN COUPLERS AS REQUIRED TO RECEIVE TAILS. COST INCLUDED WITH REINFORCEMENT BARS, EPOXY COATED.
- DEVIATE CAP AND REINFORCEMENT AS NECESSARY TO FOLLOW LAYOUT OF PIPE.
- ALL BARS DESIGNATED (E) MUST BE EPOXY COATED.
- ALL BARS MUST BE #5 BARS WITH A MINIMUM LAP OF 2'-2".

BOWMAN, BARRETT & ASSOCIATES INC.
CONSULTING ENGINEERS
Chicago, Illinois
312.228.0100
www.bbandainc.com

REVISIONS	DATE
NAME	

ILLINOIS DEPARTMENT OF TRANSPORTATION
F.A.I. 94/90 (DAN RYAN EXPRESSWAY)
GARFIELD BLVD TO 31ST STREET (SB LOCAL LANES)

RDWY DETAILS - 46TH ST CROSSING
36" WATER MAIN PROTECTION CAP

SCALE: NTS
DATE: JUNE 9, 2006

DRAWN BY: MTR
CHECKED BY: BLU

RDT-13

4:55:55 PM
6/8/2006