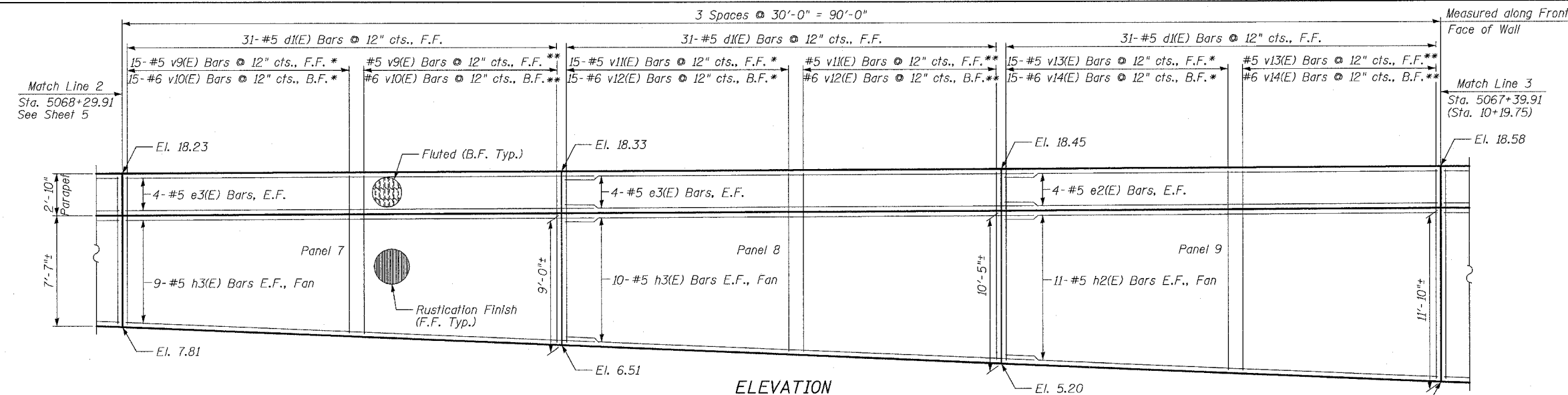
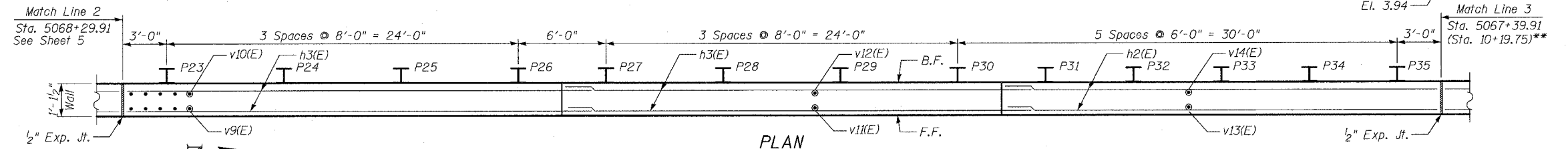


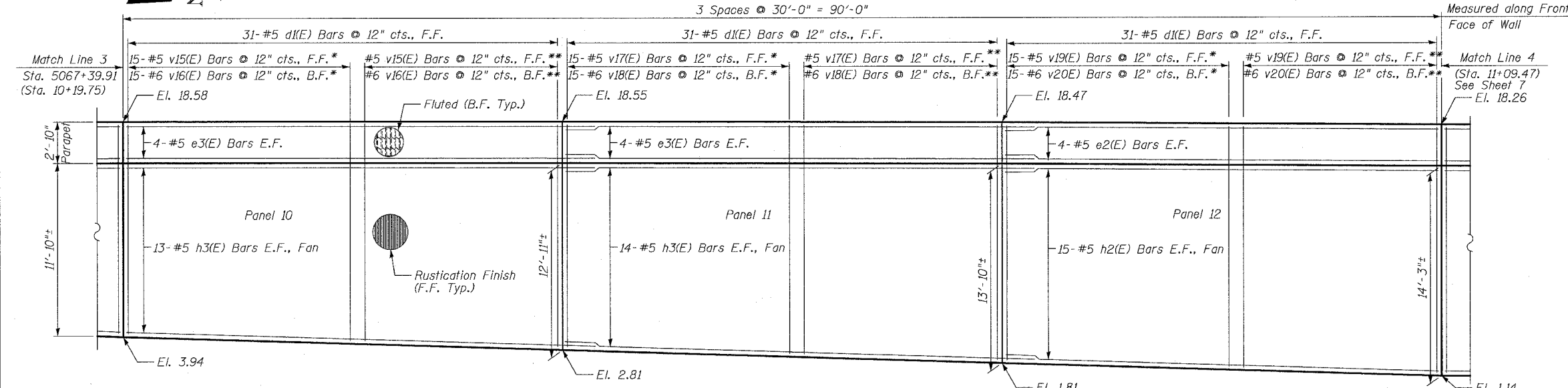
F.A.I.	SECTION	COUNTY	TOTAL SHEETS	SHEET NO.
94/90	*	COOK	588	417
STA.	TO STA.			
FED. ROAD DIST. NO.	ILLINOIS	FED. AID PROJECT		
62303	*2021-922	PT2 ETC 2324.6-1P	R-11	



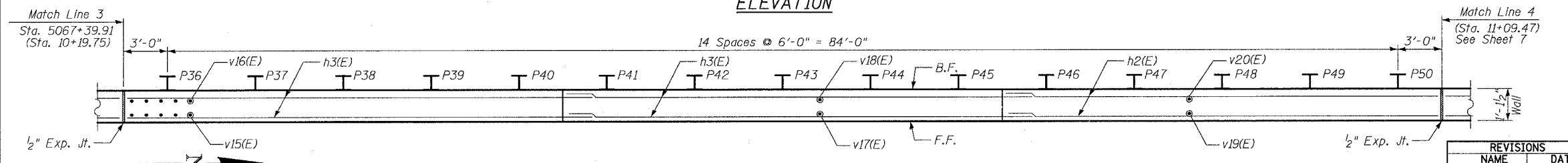
ELEVATION



PLAN



ELEVATION



PLAN

NOTES:

1. Facing in Plan Views is scaled 1:2 on an X:Y scale to show reinforcement.
2. See details for reinforcing bar clearances.
3. Stationing is @ Ramp 47A. Stations in parentheses are @ Wentworth Ave.

* Order bars full length and cut as indicated in cutting diagram.
 ** Remaining Bars from Cutting Diagram

F.F. - denotes Front Face
 B.F. - denotes Back Face
 E.F. - denotes Each Face

MIN BAR LAP

- #5 - 2'-2"
- #6 - 2'-7"

SHEET 6 OF 24

ILLINOIS DEPARTMENT OF TRANSPORTATION
 F.A.I. 94/90 (DAN RYAN EXPRESSWAY)
 GARFIELD BLVD TO 31ST STREET (SB LOCAL LANES)
 COOK COUNTY
 STA. 3532+90.57 TO STA. 3543+57.42
 RETAINING WALL S-455-F
 WALL DETAILS 2
 S.N. 016-W978

SCALE: NTS DRAWN BY: MTR
 DATE: JUNE 9, 2006 CHECKED BY: BLU

REVISIONS	
NAME	DATE
REVISED	7/13/06

BOWMAN, BARRETT & ASSOCIATES INC.
 CONSULTING ENGINEERS
 Chicago, Illinois 312.228.0100
 www.bbatainc.com

7/13/2006 5:04:46 PM