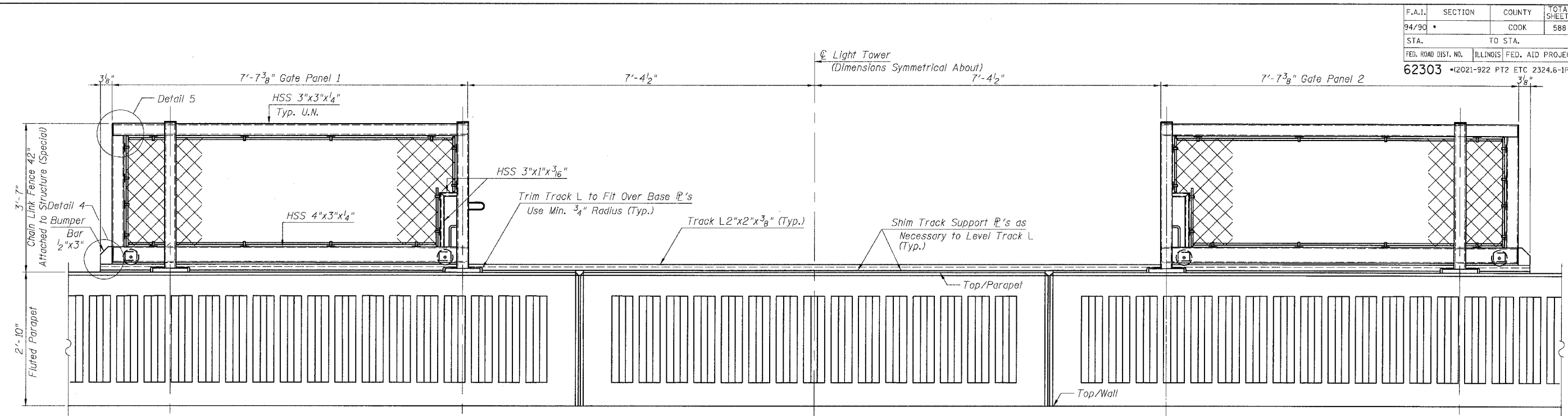
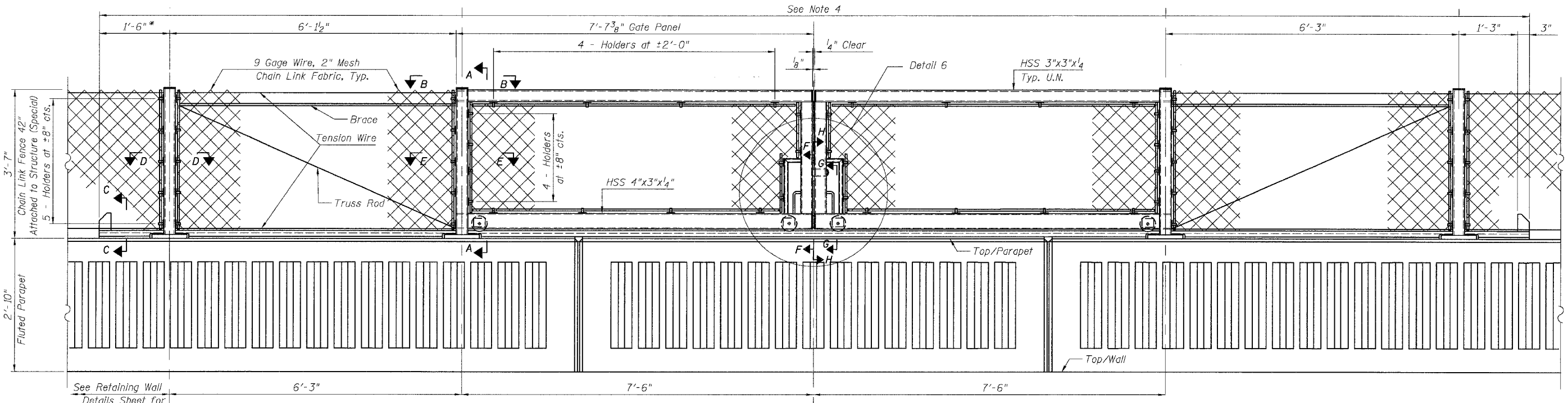


F.A.I.	SECTION	COUNTY	TOTAL SHEETS	SHEET NO.
94/90		COOK	588	455
STA.	TO STA.			
FED. ROAD DIST. NO.	ILLINOIS	FED. AID PROJECT		
62303	(2021-922 PT2 ETC 2324.6-1P)	R-11		



BACK FACE ELEVATION - GATE IN OPEN POSITION



BACK FACE ELEVATION - GATE IN CLOSED POSITION

NOTES:

1. For Notes see Sheet SD2A.
2. For Sections A-A, B-B, D-D and E-E see Sheet SD4.
3. For Sections C-C, F-F, G-G & H-H and Details 4, 5 & 6 see Sheet SD5.

NOTES (cont'd.):

4. Pay Limits for "Chain Link Gates (Special)", Fence fabric over length denoted by (*) shall be included with "Chain Link Fence, 42" Attached to Structure (Special)".

BOWMAN, BARRETT & ASSOCIATES INC.
CONSULTING ENGINEERS
Chicago, Illinois
312.228.0100
www.bbandainc.com

REVISIONS	
NAME	DATE

SHEET SD3 OF SD9
ILLINOIS DEPARTMENT OF TRANSPORTATION
F.A.I. 94/90 (DAN RYAN EXPRESSWAY)
GARFIELD BLVD TO 31ST STREET (SB LOCAL LANES)
CHAIN LINK FENCE, 42"
ATTACHED TO STRUCTURE (SPECIAL)
TYPICAL GATE ELEVATIONS
SCALE: NTS
DATE: JUNE 9, 2006
DRAWN BY: MTR
CHECKED BY: BLU

6/9/2006 9:55:07 AM