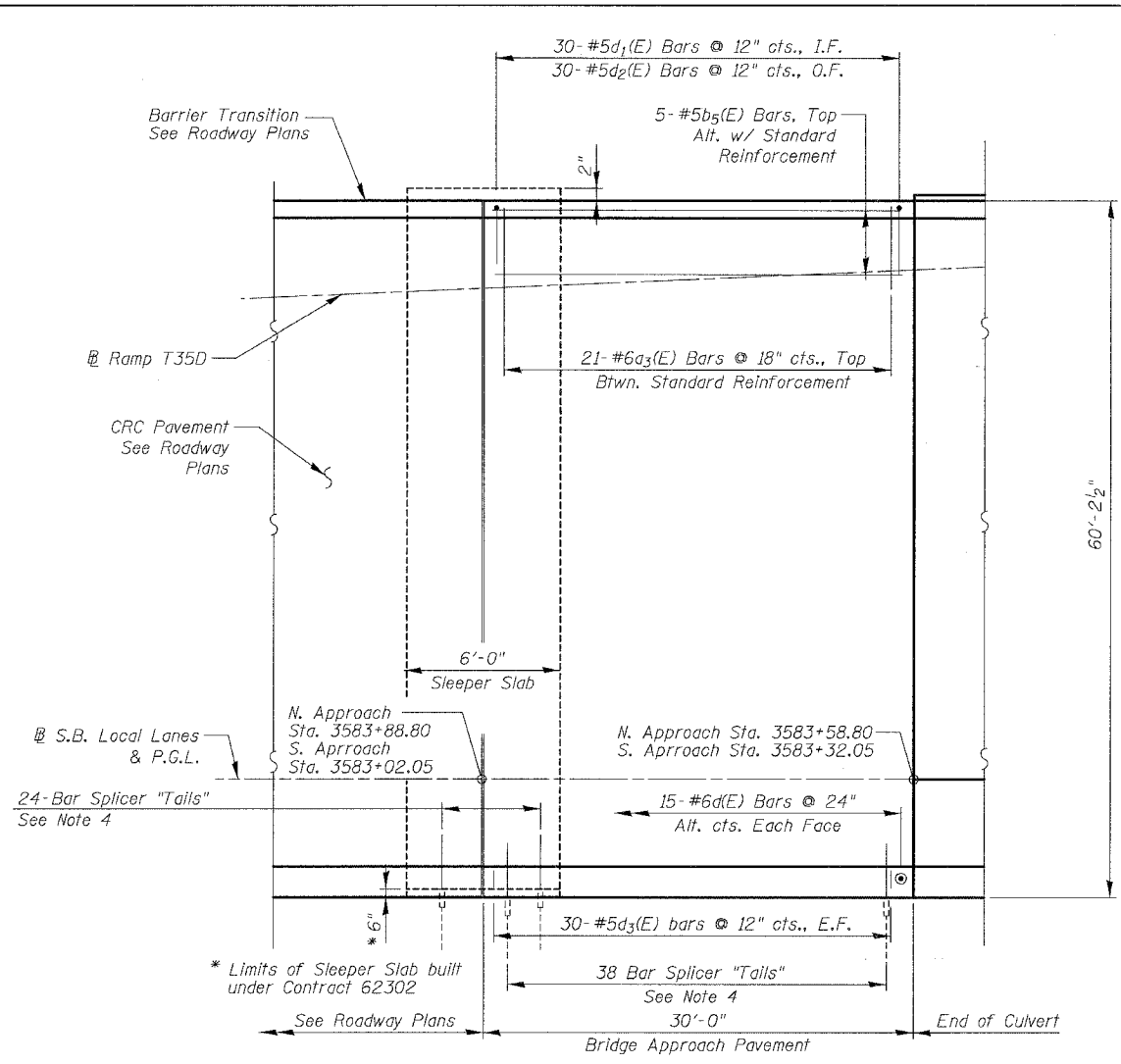
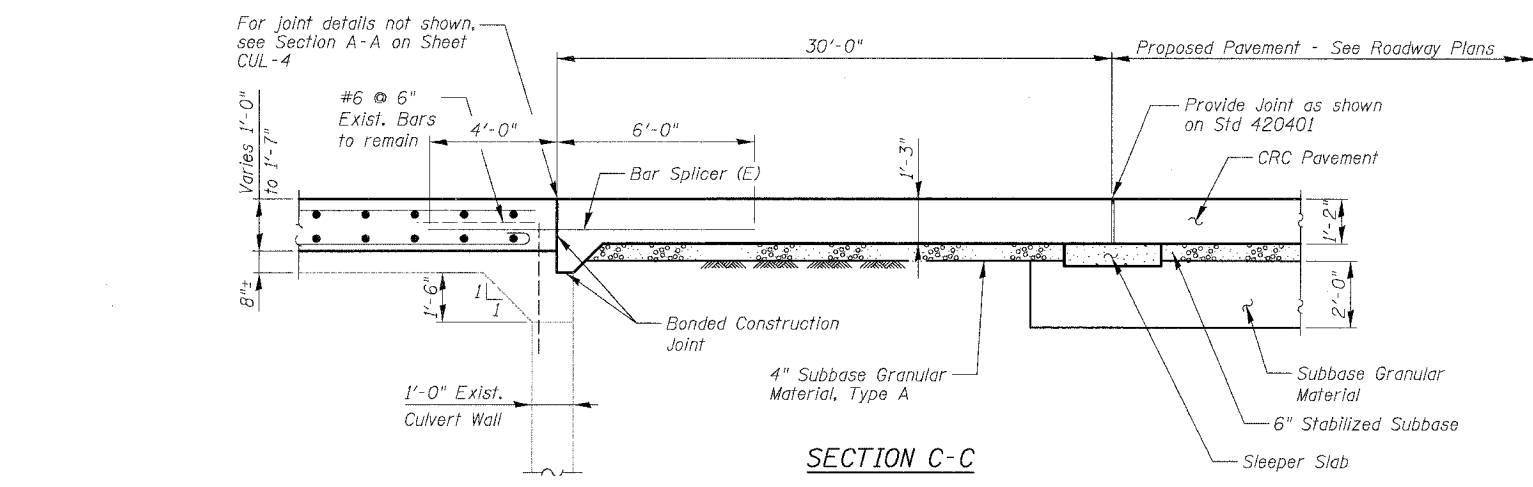


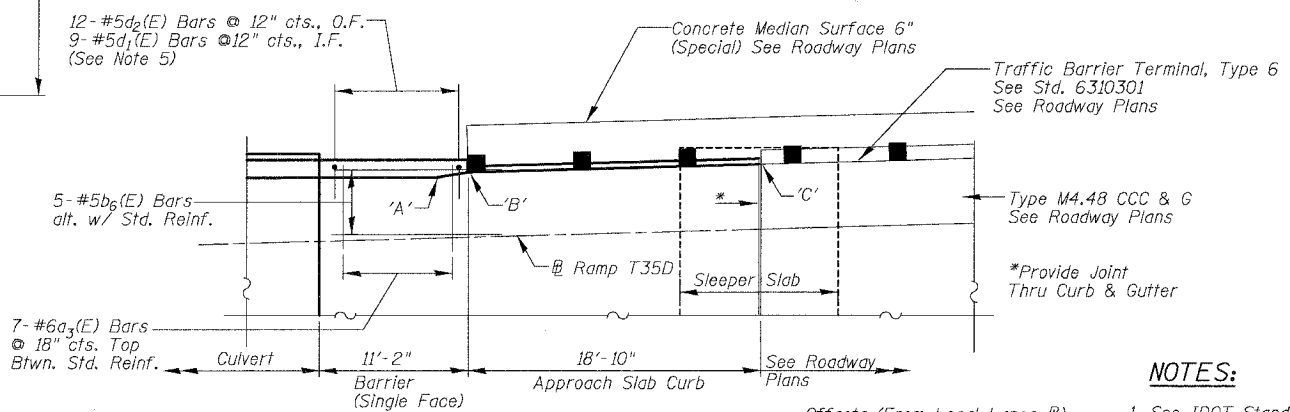
F.A.I.	SECTION	COUNTY	TOTAL SHEETS	SHEET NO.
94/90		COOK	588	467
STA.	TO STA.			
FED. ROAD DIST. NO.	ILLINOIS FED. AID PROJECT			
62303	2021-922 PT2 ETC 2324.6-1P) R-11			



PARTIAL PLAN
South Approach Shown
North Approach Similar as Noted



SECTION C-C



PARTIAL PLAN DETAIL
North Approach

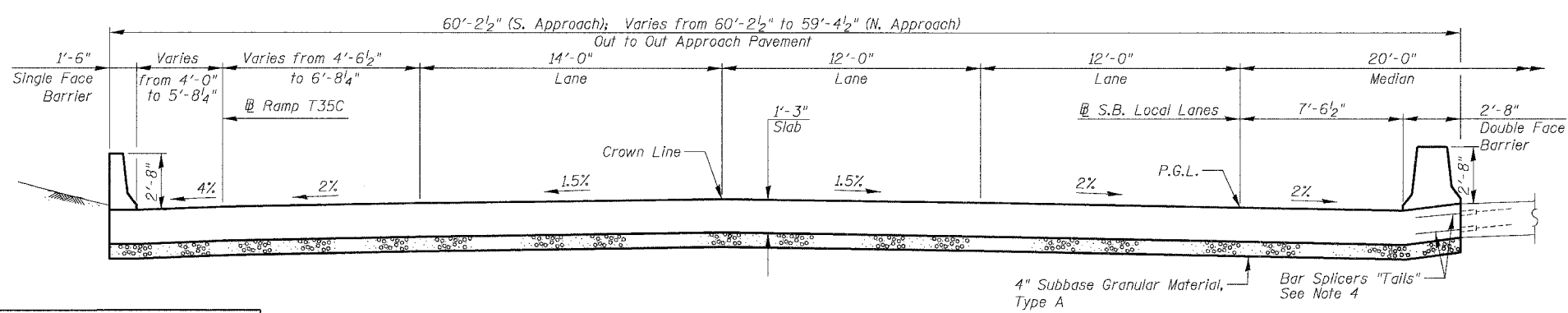
Offsets (From Local Lanes #)
'A' = 48.50'
'B' = 48.92'
'C' = 49.40'

NOTES:

1. See IDOT Standard 420401 for typical approach pavement reinforcing and details
2. Reinforcement Bars designated (E) shall be epoxy coated.
3. See Sheet CUL-7 for Bill of Materials.
4. Contractor shall be provided Bar Splicer "Tails" by Engineer for use in previously placed inserts. Contractor shall exercise care in removing ramp pavement not to damage inserts. Cost of installing "Tails" included with Bar Splicers.
5. Provide 3-#5d5(E) bars @ 12" cts., I.F. @ tapered end.

ABBREVIATIONS:

I.F. = Inside Face
O.F. = Outside Face



SECTION D-D

BOWMAN, BARRETT & ASSOCIATES INC.
CONSULTING ENGINEERS
Chicago, Illinois
312.228.0100
www.bbandainc.com

REVISIONS	
NAME	DATE

SHEET CUL-6 OF CUL-16
ILLINOIS DEPARTMENT OF TRANSPORTATION
F.A.I. 94/90 (DAN RYAN EXPRESSWAY)
GARFIELD BLVD TO 31ST STREET (SB LOCAL LANES)
MWRD CULVERT, N. OF 39TH ST.,
COOK COUNTY, S.N. 016-2625
APPROACH SLAB DETAILS 1
SCALE: N.T.S. DRAWN BY: MTR
DATE: JUNE 9, 2006 CHECKED BY: BLU

6/9/2006 8:53:59 AM