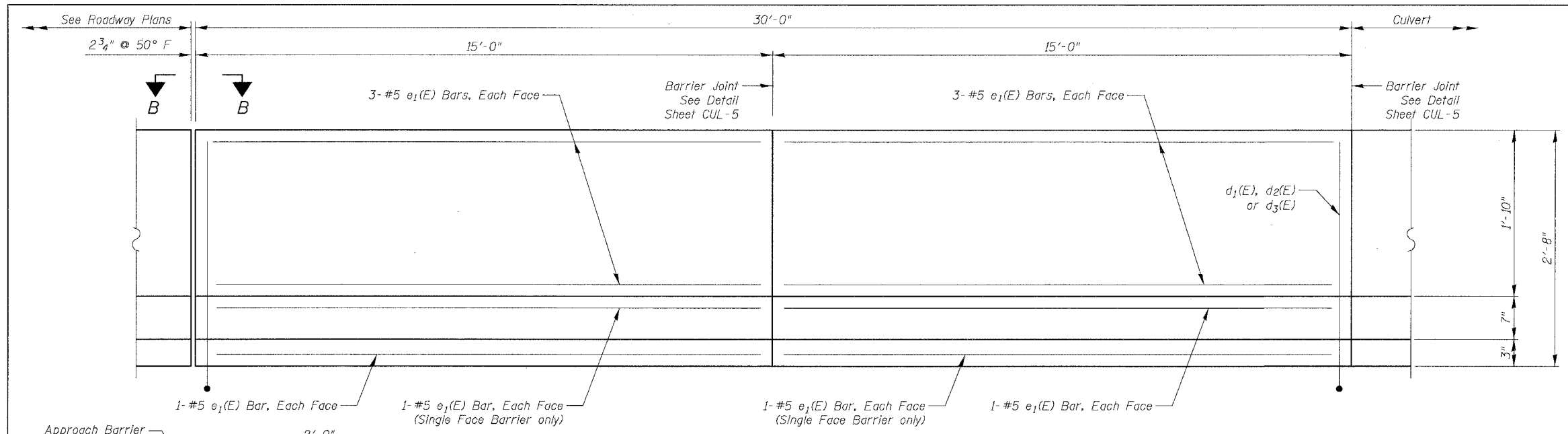


F.A.I.	SECTION	COUNTY	TOTAL SHEETS	SHEET NO.
94/90		COOK	588	468
STA.	TO STA.			
FED. ROAD DIST. NO.	ILLINOIS	FED. AID PROJECT		
62303	•12021-922 PT2 ETC	2324.6-1P1 R-11		

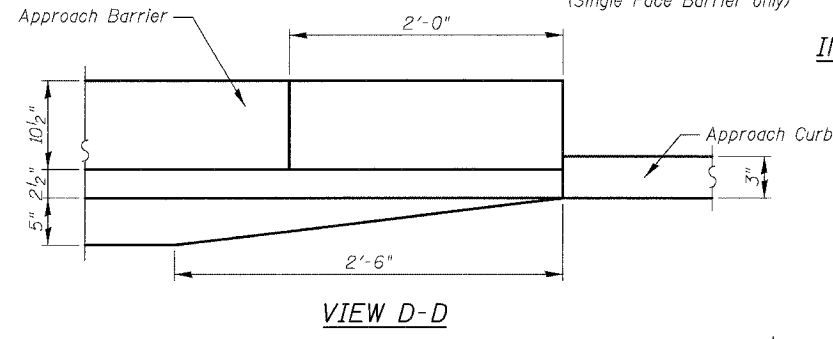
**APPROACH PAVEMENT
BILL OF MATERIAL
TOTAL FOR 2 APPROACH SLABS**

Bar	No.	Size	Length	Shape
a ₃ (E)	28	#6	4'-6"	—
b ₅ (E)	5	#5	29'-8"	—
b ₆ (E)	5	#5	14'-0"	—
d(E)	39	#6	1'-0"	—
d ₁ (E)	42	#5	4'-5"	L
d ₂ (E)	60	#5	4'-11"	L
d ₃ (E)	120	#5	3'-3"	L
d ₅ (E)	3	#5	4'-5"	L
e ₁ (E)	52	#5	14'-8"	—
e ₂ (E)	10	#5	10'-10"	—
Bridge Approach Pavement		Sq. Yd.	400	
Concrete Superstructure		Cu. Yd.	16.1	
Protective Coat		Sq. Yd.	75	
Reinforcement Bars, Epoxy Coated		Pound	2,240	

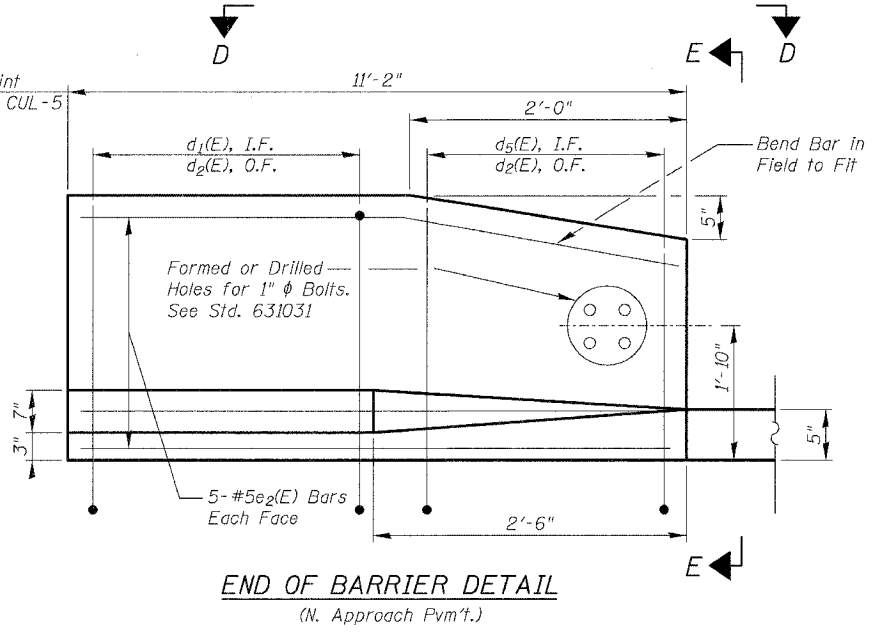
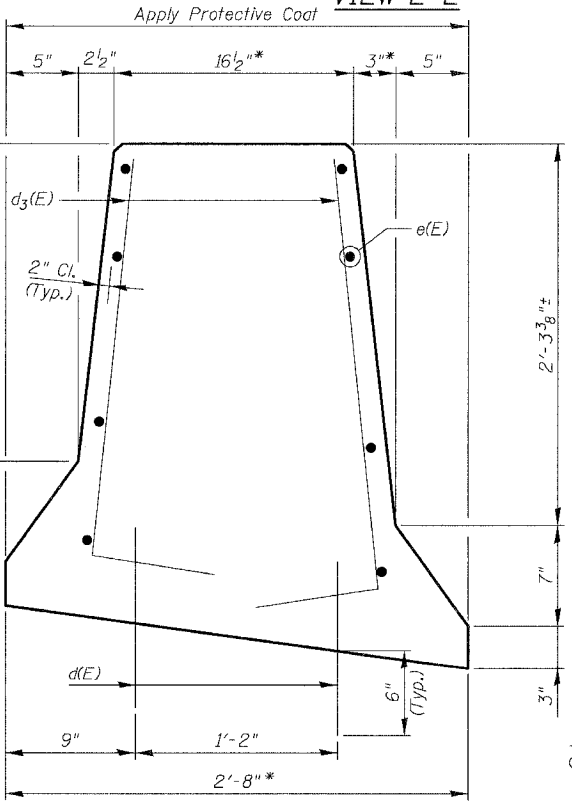
See IDOT Standard 420401 for typical approach pavement reinforcing and details. Additional reinforcement bars, and concrete for single & double face barrier not shown on Std. 420401 shall be paid for as Reinforcement Bars, Epoxy Coated, Bar Splicers, and Concrete Superstructure. Reinforcement bars designated (E) shall be epoxy coated. See Sheet CUL-4 for treatment of Approach Slab/Culvert Slab joint. Apply Protective Coat to top and inside face of single face barrier and to top and both faces of double face barrier.



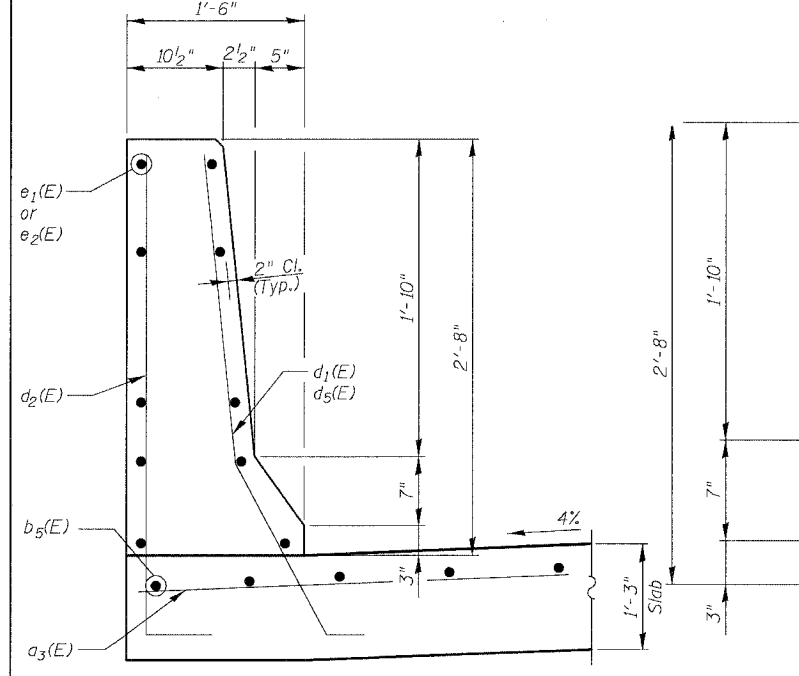
INSIDE ELEVATION OF BARRIER ON APPROACH PAVEMENT
Single Face Shown, Double Face Similar as Noted



VIEW E-E



END OF BARRIER DETAIL
(N. Approach Pvm't.)

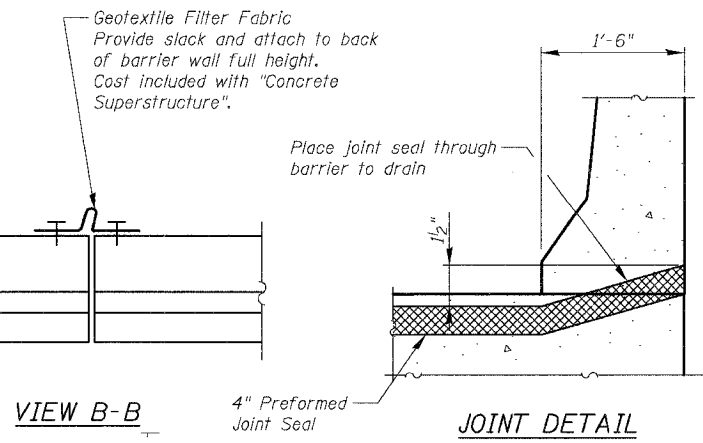


SECTION THRU SINGLE FACE BARRIER

Note: Standard Approach Pavement reinforcement not shown for clarity

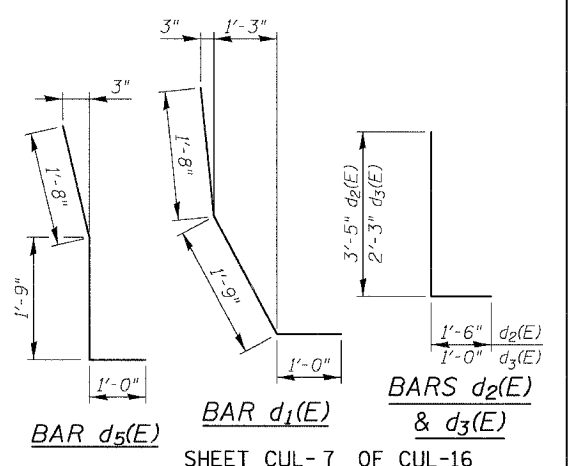
SECTION THRU DOUBLE FACE BARRIER

* Contractor can vary these dimensions to match adjacent roadway barrier if required.



VIEW B-B

JOINT DETAIL



SHEET CUL-7 OF CUL-16

REVISIONS	NAME	DATE

ILLINOIS DEPARTMENT OF TRANSPORTATION
F.A.I. 94/90 (DAN RYAN EXPRESSWAY)
GARFIELD BLVD TO 31ST STREET (SB LOCAL LANES)
MWRD CULVERT, N. OF 39TH ST.,
COOK COUNTY, S.N. 016-2625
APPROACH SLAB DETAILS 2

SCALE: N.T.S. DRAWN BY: MTR
DATE: JUNE 9, 2006 CHECKED BY: BLU

BOWMAN, BARRETT & ASSOCIATES INC.
CONSULTING ENGINEERS
Chicago, Illinois
312.228.0100
www.bbainc.com

6/8/2006 8:35:30 AM