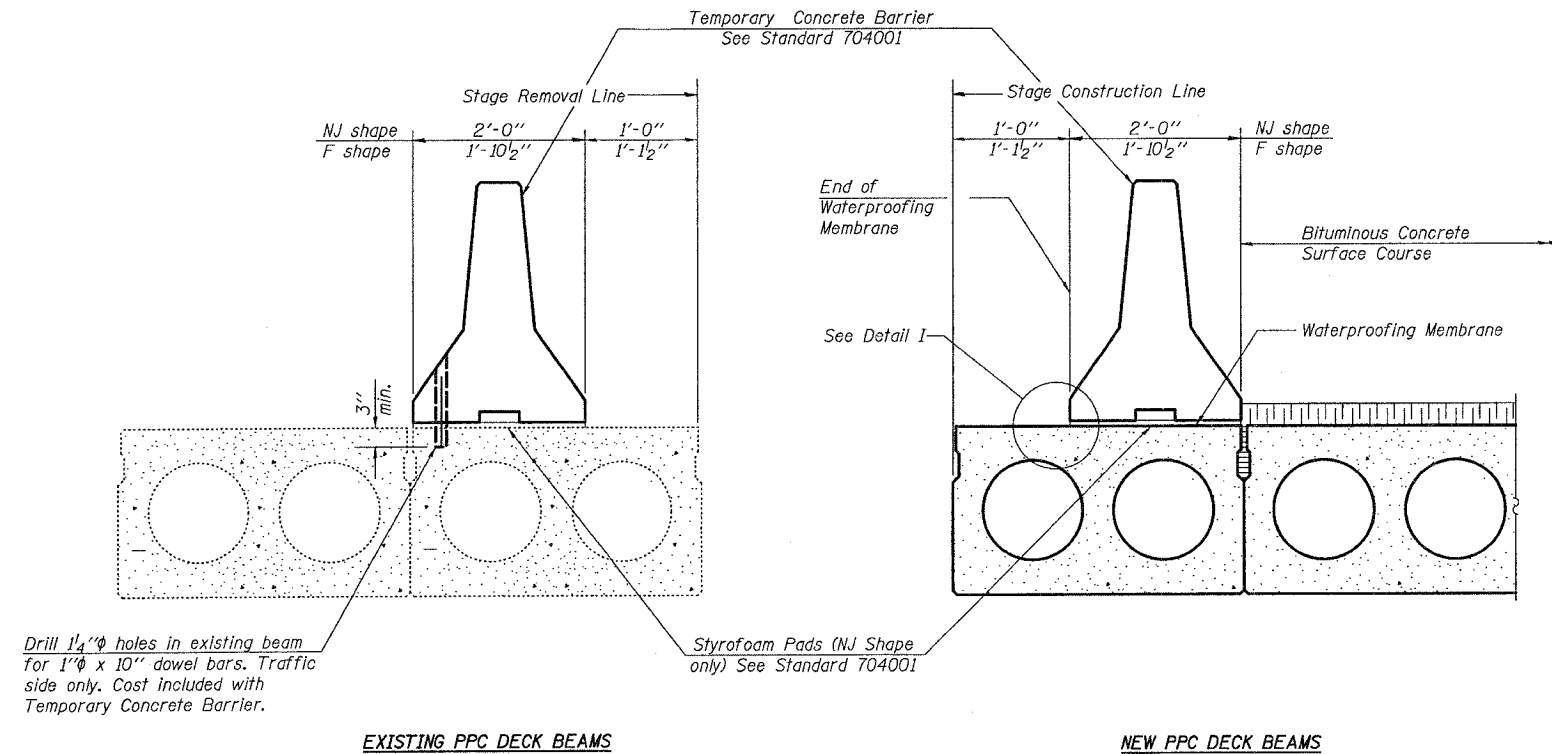


STATE OF ILLINOIS  
DEPARTMENT OF TRANSPORTATION

ROUTE NO.	SECTION	COUNTY	TOTAL SHEETS	SHEET NO.	SHEET NO. 3 8 SHEETS
FAP 789	56-BR-1	MADISON	23	12	
FED. ROAD DIST. NO. 7	ILLINOIS	FED. AID PROJECT	Contract #76965		



EXISTING PPC DECK BEAMS

NEW PPC DECK BEAMS

SECTIONS THRU PPC DECK BEAMS

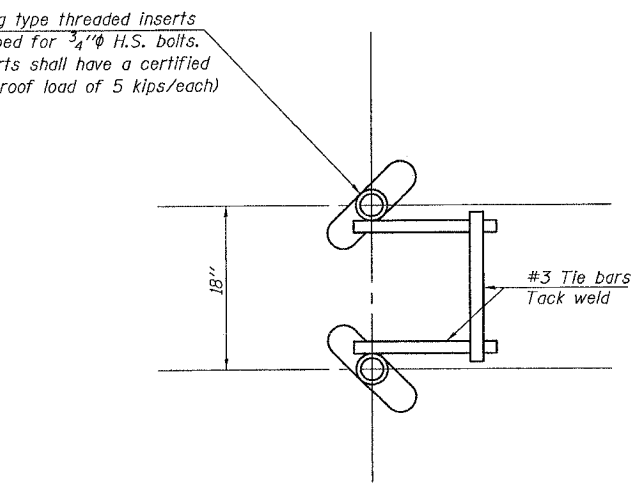
**NOTES**

The 3/4" high strength bolts used to connect the wood blocks shall be tightened to a snug fit without crushing the wood block. The wing type threaded insert assembly shall be spaced 6'-0" longitudinally.

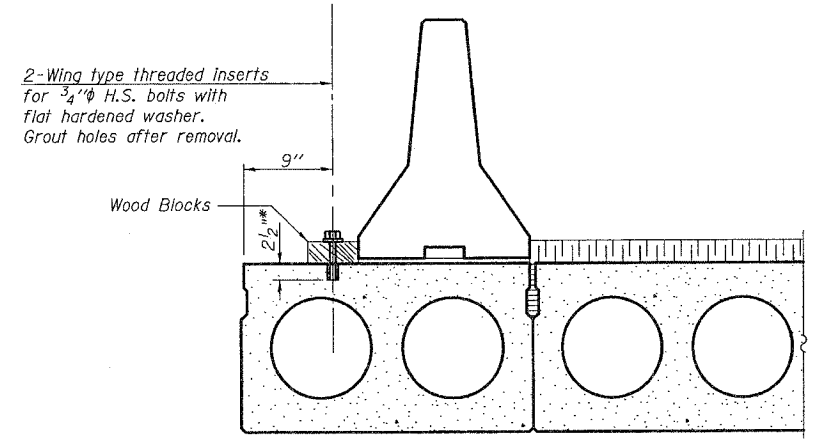
The Waterproofing Membrane shall extend under the Temporary Concrete Barrier without the asphalt sand seal protection layer. Once the Temporary Concrete Barrier has been removed and the penetrating primer, coal tar emulsion, coal tar emulsion and fiber-glass fabric and coal tar emulsion slurry layers of the Waterproofing Membrane is lapped 6", the asphalt sand seal protection layer shall be applied according to Article 581 of the Standard Specifications.

The cost for H.S. bolts, flat headed washers and wood block is included with Temporary Concrete Barrier.

The cost for wing type threaded inserts is included with Precast Prestressed Concrete Deck Beams (17" Depth).



INSERT DETAIL



DETAIL I

The Temporary Concrete Barrier and wood blocks shall not be removed until Stage II Construction PPC Deck Beams have been placed and shear keys grouted.

**TEMPORARY CONCRETE BARRIER  
FOR STAGE CONSTRUCTION  
IL ROUTE 143 OVER LITTLE MOONEY CREEK  
F.A.P. ROUTE 789 - SECTION 56-BR-1  
MADISON COUNTY  
STA. 108+74  
STRUCTURE NO. 060-0147**

PLOT DATE = \$DATE\$  
FILE NAME = \$FILE\$  
PLOT SCALE = \$SCALE\$  
USER NAME = \$USER\$