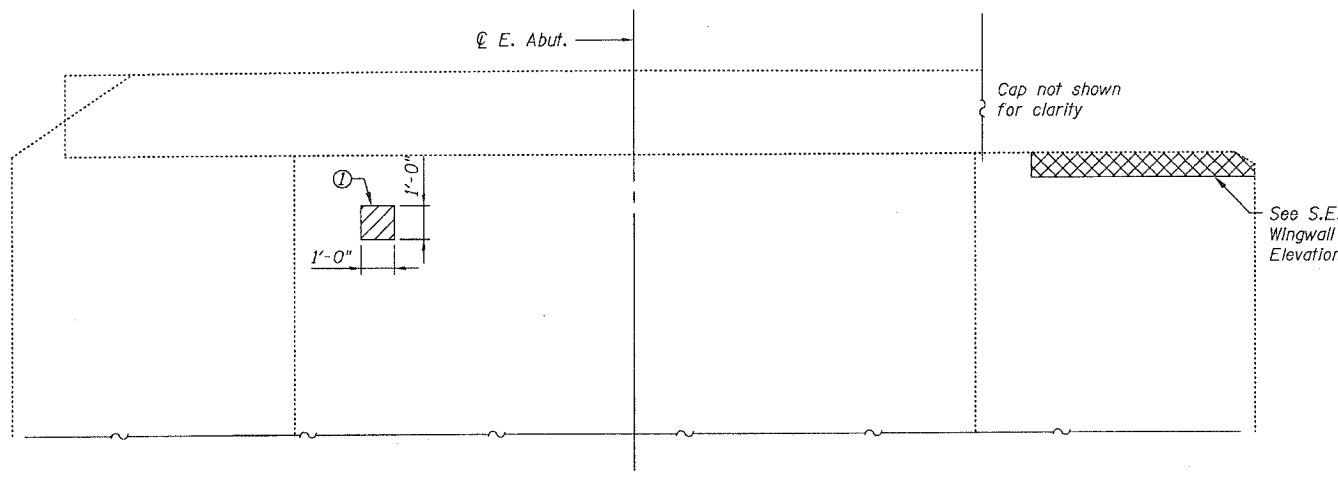


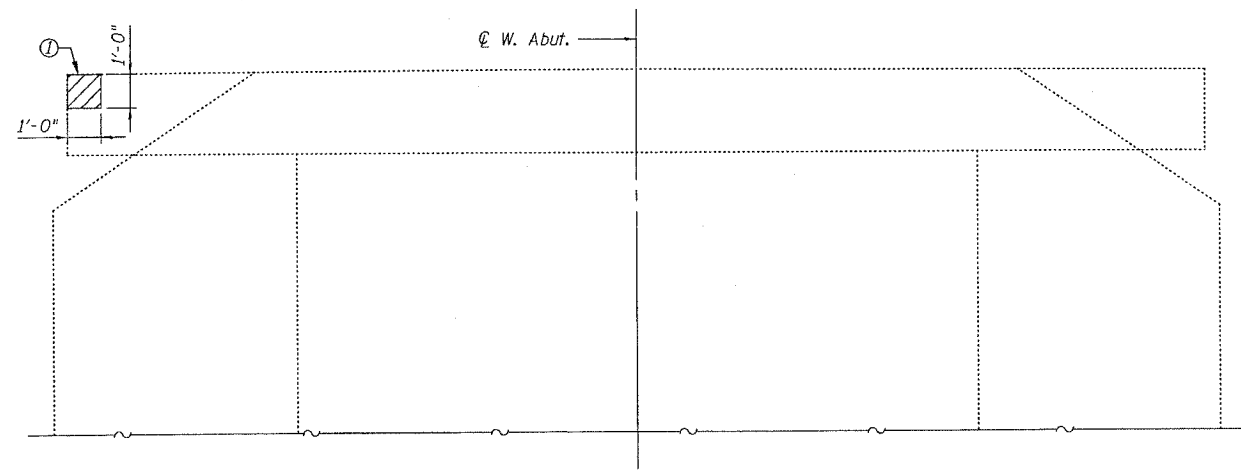
STATE OF ILLINOIS  
DEPARTMENT OF TRANSPORTATION

ROUTE NO.	SECTION	COUNTY	TOTAL SHEETS	SHEET NO.	SHEET NO. 8 8 SHEETS
FAP 789	56-BR-1	MADISON	23	17	
FED. ROAD DIST. NO. 7	ILLINOIS	FED. AID PROJECT-			

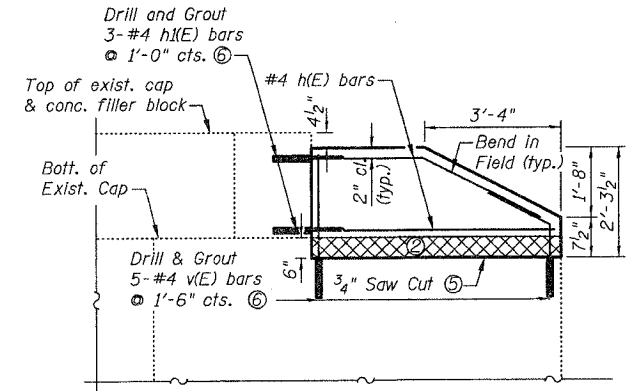
Contract #76965



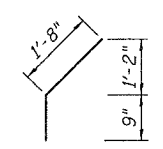
**EAST ABUTMENT**  
(Looking East)



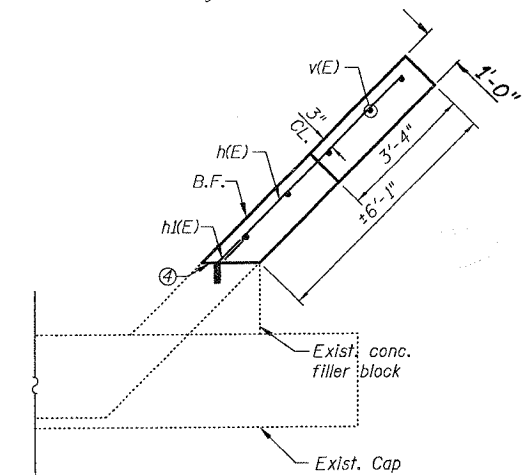
**WEST ABUTMENT**  
(Looking West)



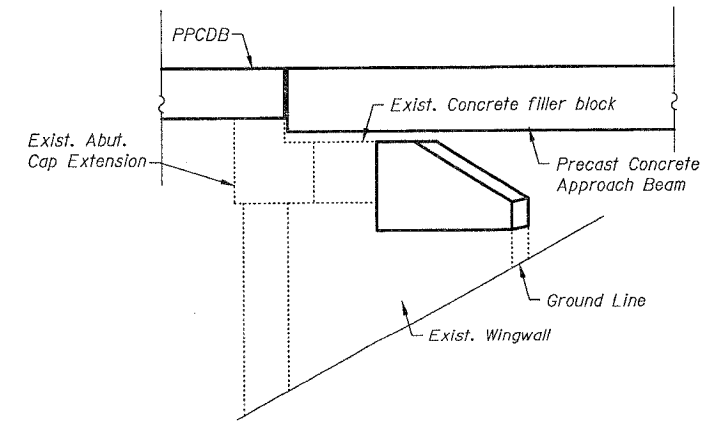
**S.E. WING WALL ELEVATION**  
(Dim. measured along the length of the Wing Wall)



**BAR h(E)**



**S.E. WING WALL PLAN**



**ABUTMENT END VIEW**

- Note:
- ① Hatched area indicates approximate area of Structural Repair of Concrete. Exact repair area to be determined by Engineer.
  - ② Cross hatched area indicates area of Concrete Removal.
  - ③ Reinforcement bars designated (E) shall be epoxy coated.
  - ④ Delaminated and loose concrete to be removed from face of filler block before drilling and grouting h(E) bars. Cost to be included with Reinforcement Bars, Epoxy Coated.
  - ⑤ Existing reinforcement bars are to be cleaned and incorporated into new construction. Any reinforcement bars that are damaged during concrete removal shall be replaced with an approved bar splicer or anchorage system. Cost included with Concrete Removal.
  - ⑥ Epoxy grout h(E) and v(E) bars in 3/4" x 9" minimum drilled holes. The grout and the method of application shall be approved by the Engineer. See Section 584 of the Standard Specification.

**BILL OF MATERIAL**

Bar	No.	Size	Length	Shape
h(E)	3	#4	6'-5"	—
h(E)	3	#4	2'-5"	—
v(E)	5	#4	3'-2"	—
Structural Repair Of Concrete (≤ 5")			Sq. Ft.	2
Reinforcement Bars, Epoxy Coated			Pound	30
Concrete Removal			Cu. Yd.	0.2
Concrete Structures			Cu. Yd.	0.5

**ABUTMENT REPAIRS**  
**IL ROUTE 143 OVER LITTLE MOONEY CREEK**  
**F.A.P. ROUTE 789 - SECTION 56-BR-1**  
**MADISON COUNTY**  
**STA. 108+74**  
**STRUCTURE NO. 060-0147**

PLOT DATE = #DATE#  
FILE NAME = #FILE#  
PLOT SCALE = #SCALE#  
USER NAME = #USER#