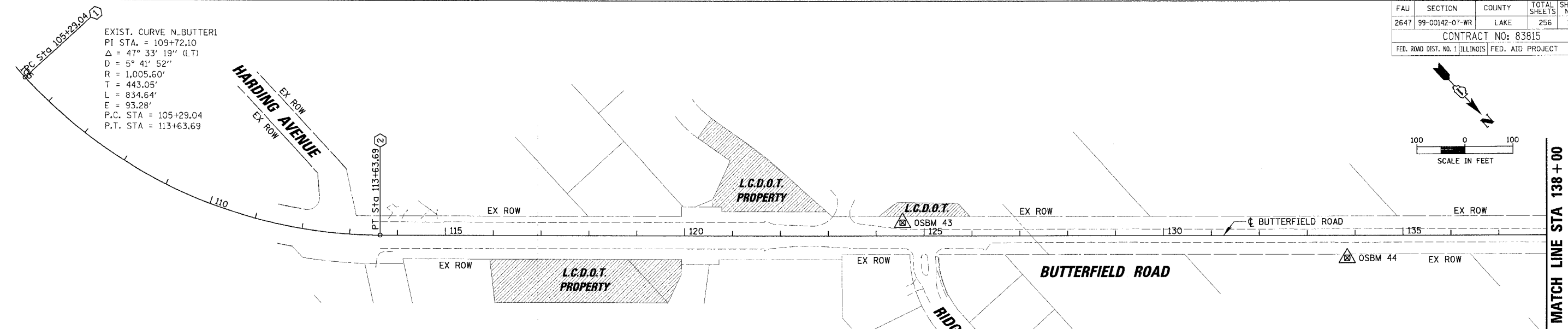
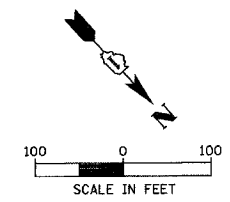


FAU	SECTION	COUNTY	TOTAL SHEETS	SHEET NO.
2647	99-00142-07-WR	LAKE	256	15
CONTRACT NO: 83815				
FED. ROAD DIST. NO. 1 ILLINOIS FED. AID PROJECT				

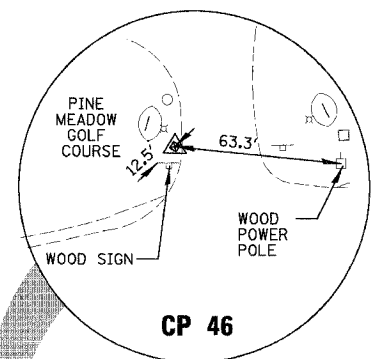


* MONUMENT

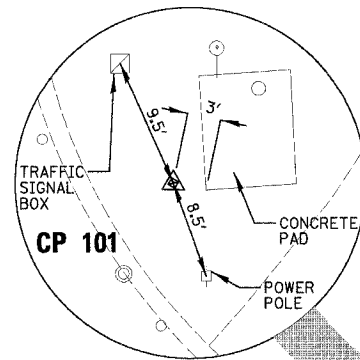
ID. #	STATION	OFFSET	NORTHING (Y)	EASTING (X)	DESCRIPTION
①	105+29.04	℄	2,045,621.81	1,081,506.26	PC
②	113+63.69	℄	2,046,364.10	1,081,179.84	PT
③	138+02.86	℄	2,048,011.50	1,079,381.05	PC
④	149+56.32	℄	2,049,015.12	1,078,862.31	POC
⑤	151+67.61	℄	2,049,225.89	1,078,849.59	PT
⑥	162+94.12	℄	2,050,352.40	1,078,854.38	POT
⑫	15+00.00	℄	2,049,014.63	1,079,362.31	POT

NO.	DESCRIPTION	ELEV.
OSBM 43	3/4" IRON PIPE WITH CAP AT WEST SIDE OF BUTTERFIELD ROAD JUST SOUTH OF RIDGEWOOD LANE	710.73
OSBM 44	3/4" IRON PIPE WITH CAP AT EAST SIDE OF BUTTERFIELD ROAD JUST NORTH OF THE COMED RIGHT-OF-WAY	731.28
OSBM 45	3/4" IRON PIPE WITH CAP AT WEST SIDE OF BUTTERFIELD ROAD ABOUT 800' ± SOUTH OF LAKE STREET BY THE JAWA VALVES	746.72
OSBM LAKE	ARROW BOLT OF FIRE HYDRANT A NORTHEAST CORNER OF BUTTERFIELD & LAKE STREET	743.67
OSBM 100	SMALL RAILROAD SPIKE WITH X-CUT AT EAST SIDE OF BUTTERFIELD ROAD ABOUT 500' ± SOUTH OF WINCHESTER ROAD AT END OF CURB AND GUTTER	739.68
OSBM WIN	WINCHESELED SOUTHEAST CORNER OF CONCRETE BASE OF BRICK FENCE POST (THE SOUTHERN MOST BRICK FENCE POST IN THE NORTHWEST CORNER OF BUTTERFIELD & WINCHESTER ROAD)	732.55

NOTE: PK NAILS HAVE BEEN SET AT ALL+00 STATIONS AT PROPOSED CENTERLINES



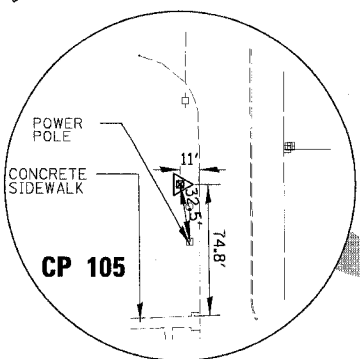
CP 46
STA. 149+45.63
OFFSET 52.51' LT
SET IRON PIPE
N= 2048997.64
E= 1078811.62
EL= 741.65



CP 101
STA. 163+31.97
OFFSET 46.47' LT
SET IRON PIPE
N= 2050390.42
E= 1078808.07
EL= 731.24

9 EACH - SURVEY MONUMENTS (INSTALL ONLY) TO BE INSTALLED BY CONTRACTOR AT ALIGNMENT POINT NUMBERS 3, 4, 5, 6, 7, 8, 9, 10, AND 11.

PROP. CURVE PB1
PI STA. = 145+27.70
Δ = 47° 45' 32" (RT)
D = 3° 29' 58"
R = 1,637.28'
T = 724.84'
L = 1,364.75'
E = 153.27'
P.C. STA = 138+02.86
P.T. STA = 151+67.61
SE = 3.2%



CP 105
STA. 15+70.79
OFFSET 26.44' RT
SET IRON PIPE
N= 2048988.1177
E= 1079433.0790
EL= 735.26

SEE SHEET NO. 17 WINCHESTER ROAD

WINCHESTER ROAD SEE SHEET NO. 17

MATCH LINE STA 168+00 SEE SHEET NO. 16

REVISIONS	
NAME	DATE

ILLINOIS DEPARTMENT OF TRANSPORTATION
**FAU 2647 - BUTTERFIELD ROAD
ALIGNMENT, TIES AND BENCHMARKS
STA. 105 + 29.04 TO STA. 168 + 00**

SCALE: 1"=100
DATE: 12/2/2005
DRAWN BY: ELA
CHECKED BY: JRM

N:\LIBERTYVILLE\99-389\CIVIL\99389.TBL
N:\LIBERTYVILLE\99-389\CIVIL\99389_01.dwg
12/2/2005 1:00