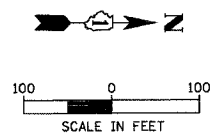
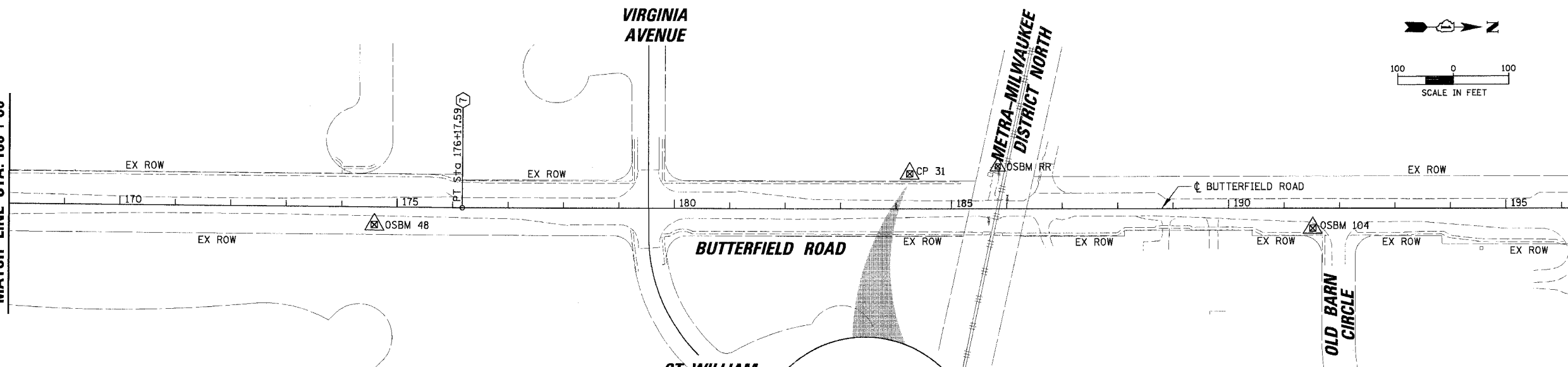


FAU	SECTION	COUNTY	TOTAL SHEETS	SHEET NO.
2647	99-00142-07-WR	LAKE	256	16
CONTRACT NO: 83815				
FED. ROAD DIST. NO. 1 ILLINOIS FED. AID PROJECT				



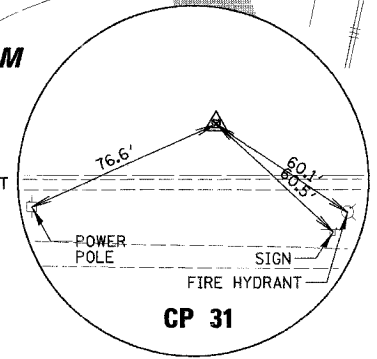
SEE SHEET NO. 15
MATCH LINE STA. 168+00

MATCH LINE STA. 198+00

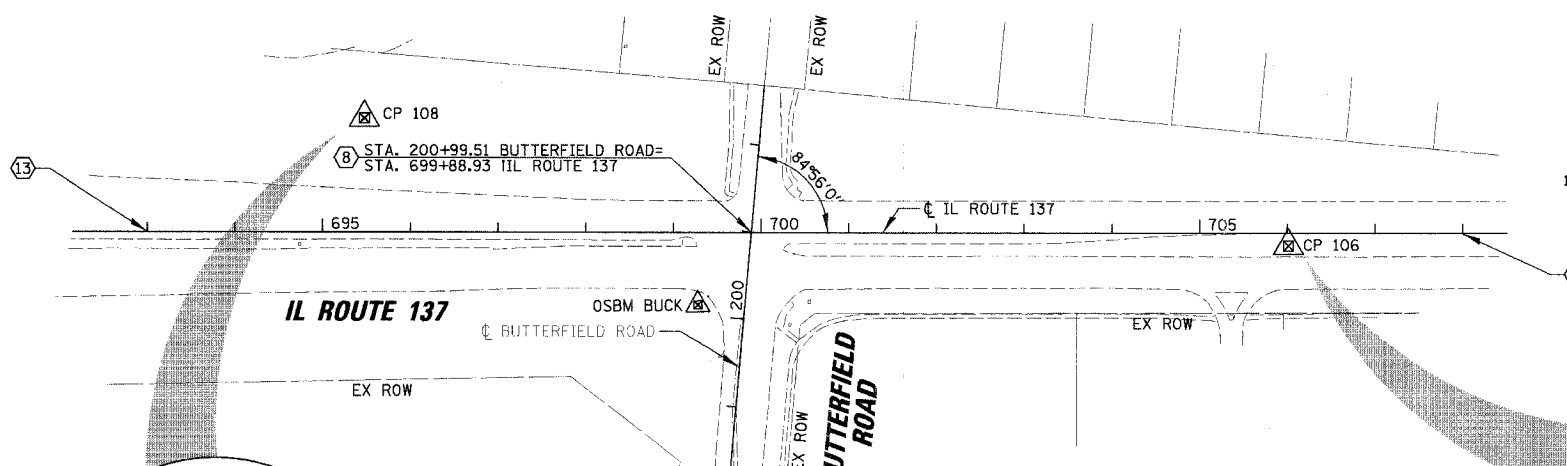


ST. WILLIAM DRIVE

CP 31
STA. 184+22.34
OFFSET 69.35' LT
SET IRON PIPE
N= 2052480.42
E= 1078788.76
EL= 737.75

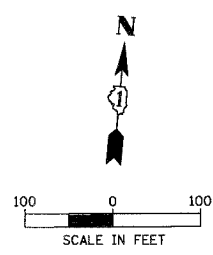
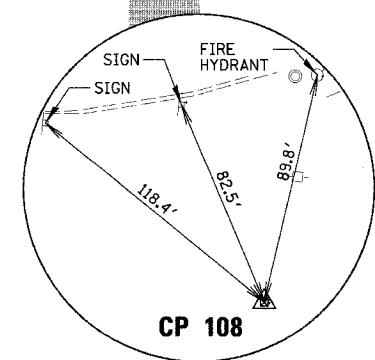


ELEVATION BENCHMARKS DATUM: NGVD OF 1929		
NO.	DESCRIPTION	ELEV.
OSBM 48	3/4" IRON PIPE WITH CAP AT EAST SIDE OF BUTTERFIELD ROAD BETWEEN WINCHESTER AND VIRGINIA AVE AT CENTERLINE OF ERIC LANE EXTENDED	741.63
OSBM RR	CUT SQUARE ON SOUTH FACE OF RAILROAD SIGNAL TOWER AT THE SOUTHWEST CORNER OF THE METRA MILWAUKEE DISTRICT NORTH RAILROAD & BUTTERFIELD ROAD	735.86
OSBM 104	X-CUT SET IN CONCRETE WALK AT SOUTHEAST CORNER OF BUTTERFIELD ROAD AND OLD BARN CIRCLE	733.90
OSBM BUCK	SQUARE CUT ON WEST FACE OF TRAFFIC LIGHT BASE AT SOUTHWEST CORNER OF BUTTERFIELD & ROUTE 137	722.25



**BUTTERFIELD ROAD
MATCH LINE STA. 198+00**

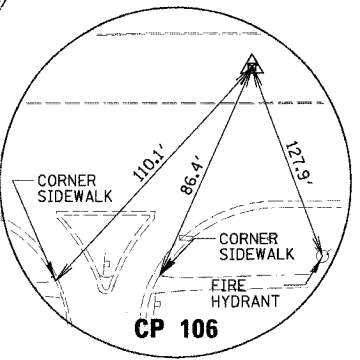
CP 108
STA. 695+45.61
OFFSET 124.92' LT
SET IRON PIPE
N= 2054241.96
E= 1078401.32
EL= 722.56



* MONUMENT

ALIGNMENT POINTS					
ID.#	STATION	OFFSET	NORTHING (Y)	EASTING (X)	DESCRIPTION
* 7	176+17.59	CL	2,051,675.84	1,078,860.01	POT
* 8	699+88.93	CL	2,054,157.75	1,078,854.14	POT
13	693+00.00	CL	2,054,095.28	1,078,168.05	POT
14	708+00.00	CL	2,054,231.29	1,079,661.87	POT

CP 106
STA. 705+91.77
OFFSET 13.44' RT
SET IRON PIPE
N= 2054199.02
E= 1079455.72
EL= 726.91



9 EACH - SURVEY MONUMENTS (INSTALL ONLY)
TO BE INSTALLED BY CONTRACTOR AT
ALIGNMENT POINT NUMBERS 3, 4, 5, 6, 7, 8,
9, 10, AND 11.

NOTE: PK NAILS HAVE BEEN SET AT ALL+00
STATIONS AT PROPOSED CENTERLINES

REVISIONS	
NAME	DATE

ILLINOIS DEPARTMENT OF TRANSPORTATION
**FAU 2647 - BUTTERFIELD ROAD
ALIGNMENT, TIES AND BENCHMARKS
STA. 168+00 TO STA. 198+00
IL ROUTE 137**

SCALE: 1"=100
DATE: 12/2/2005
DRAWN BY: ELA
CHECKED BY: JRM

N:\LIBERTYVILLE\99-389\CIVIL\99389.tbl
N:\LIBERTYVILLE\99-389\CIVIL\99389_02.bnh
12/2/2005 11:00