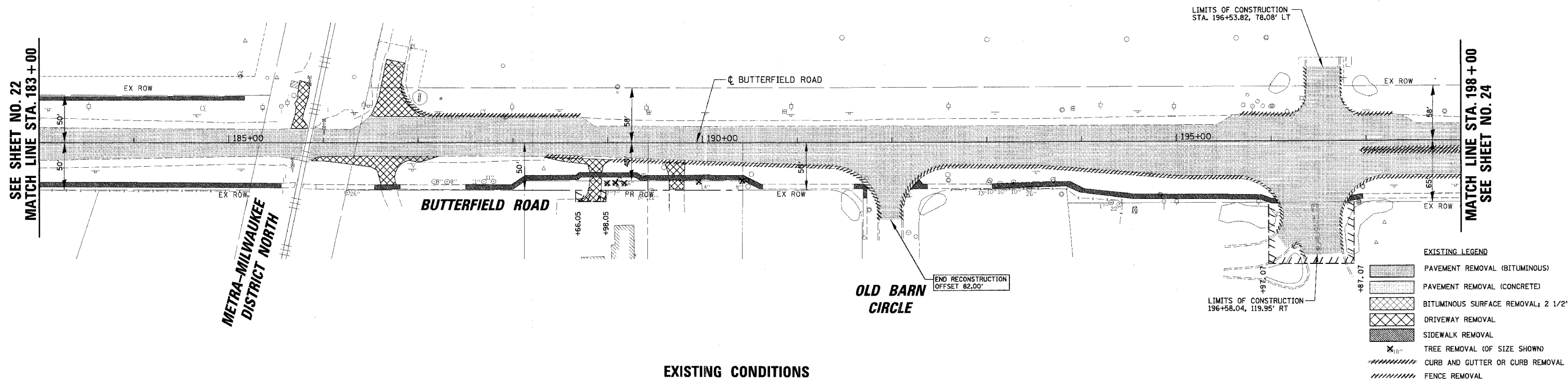
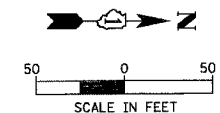


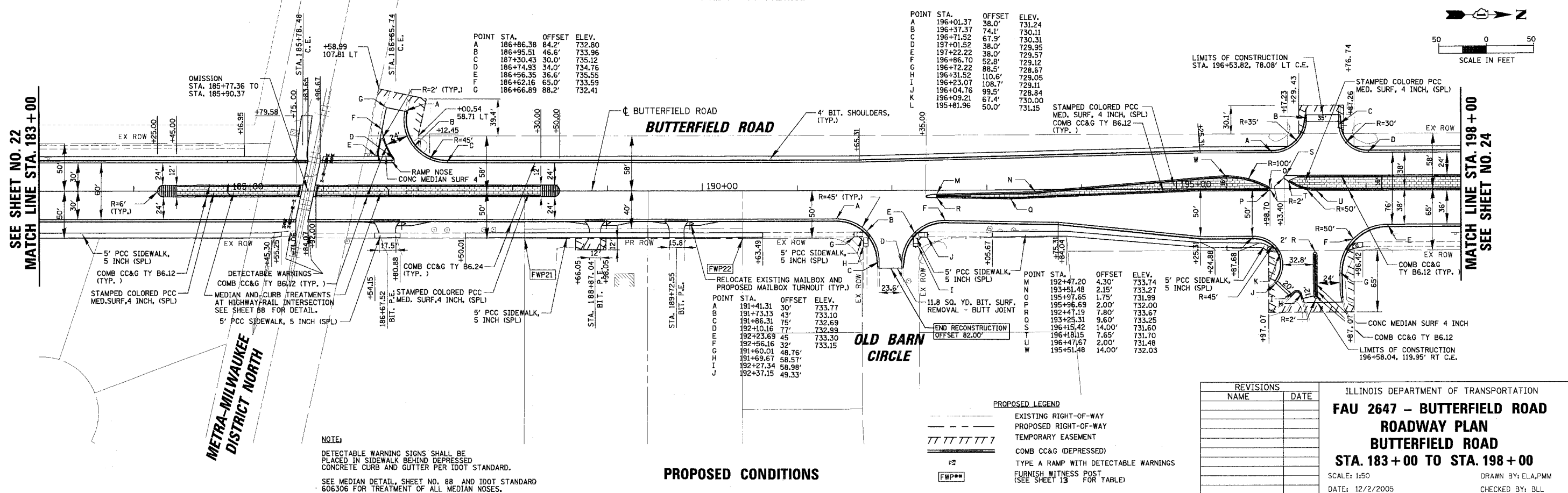
FAU	SECTION	COUNTY	TOTAL SHEETS	SHEET NO.
2647	99-00142-07-WR	LAKE	256	23
CONTRACT NO: 83815				
FED. ROAD DIST. NO. 1 ILLINOIS FED. AID PROJECT				



EXISTING CONDITIONS

EXISTING LEGEND

- PAVEMENT REMOVAL (BITUMINOUS)
- PAVEMENT REMOVAL (CONCRETE)
- BITUMINOUS SURFACE REMOVAL, 2 1/2"
- DRIVEWAY REMOVAL
- SIDEWALK REMOVAL
- TREE REMOVAL (OF SIZE SHOWN)
- CURB AND GUTTER OR CURB REMOVAL
- FENCE REMOVAL



PROPOSED CONDITIONS

POINT	STA.	OFFSET	ELEV.
A	196+01.37	38.0'	731.24
B	196+37.37	74.1'	730.11
C	196+71.52	67.9'	730.31
D	197+01.52	38.0'	729.95
E	197+22.22	38.0'	729.57
F	196+66.70	52.8'	729.12
G	196+72.22	88.5'	728.67
H	196+31.52	110.6'	729.05
I	196+23.07	108.7'	729.11
J	196+04.76	99.5'	728.84
K	196+09.21	67.4'	730.00
L	195+81.96	50.0'	731.15

POINT	STA.	OFFSET	ELEV.
M	192+47.20	4.30'	733.74
N	193+51.48	2.15'	733.27
O	195+97.65	1.75'	731.99
P	195+96.69	2.00'	732.00
Q	192+47.19	7.80'	733.67
R	193+25.31	9.60'	733.25
S	196+15.42	14.00'	731.60
T	196+18.15	7.65'	731.70
U	196+47.67	2.00'	731.46
V	195+51.48	14.00'	732.03

POINT	STA.	OFFSET	ELEV.
A	191+41.31	30'	733.77
B	191+73.13	43'	733.10
C	191+86.31	75'	732.69
D	192+10.16	77'	732.99
E	192+23.69	45'	733.30
F	192+56.16	32'	733.15
G	191+60.01	48.76'	
H	191+69.67	58.57'	
I	192+27.34	58.98'	
J	192+37.15	49.33'	

PROPOSED LEGEND

- EXISTING RIGHT-OF-WAY
- PROPOSED RIGHT-OF-WAY
- TEMPORARY EASEMENT
- COMB CC&G (DEPRESSED)
- TYPE A RAMP WITH DETECTABLE WARNINGS
- FURNISH WITNESS POST (SEE SHEET 13 FOR TABLE)

REVISIONS	
NAME	DATE

ILLINOIS DEPARTMENT OF TRANSPORTATION
FAU 2647 - BUTTERFIELD ROAD
ROADWAY PLAN
BUTTERFIELD ROAD
STA. 183+00 TO STA. 198+00
 SCALE: 1/50
 DATE: 12/2/2005
 DRAWN BY: ELA, P.M.M.
 CHECKED BY: BLL