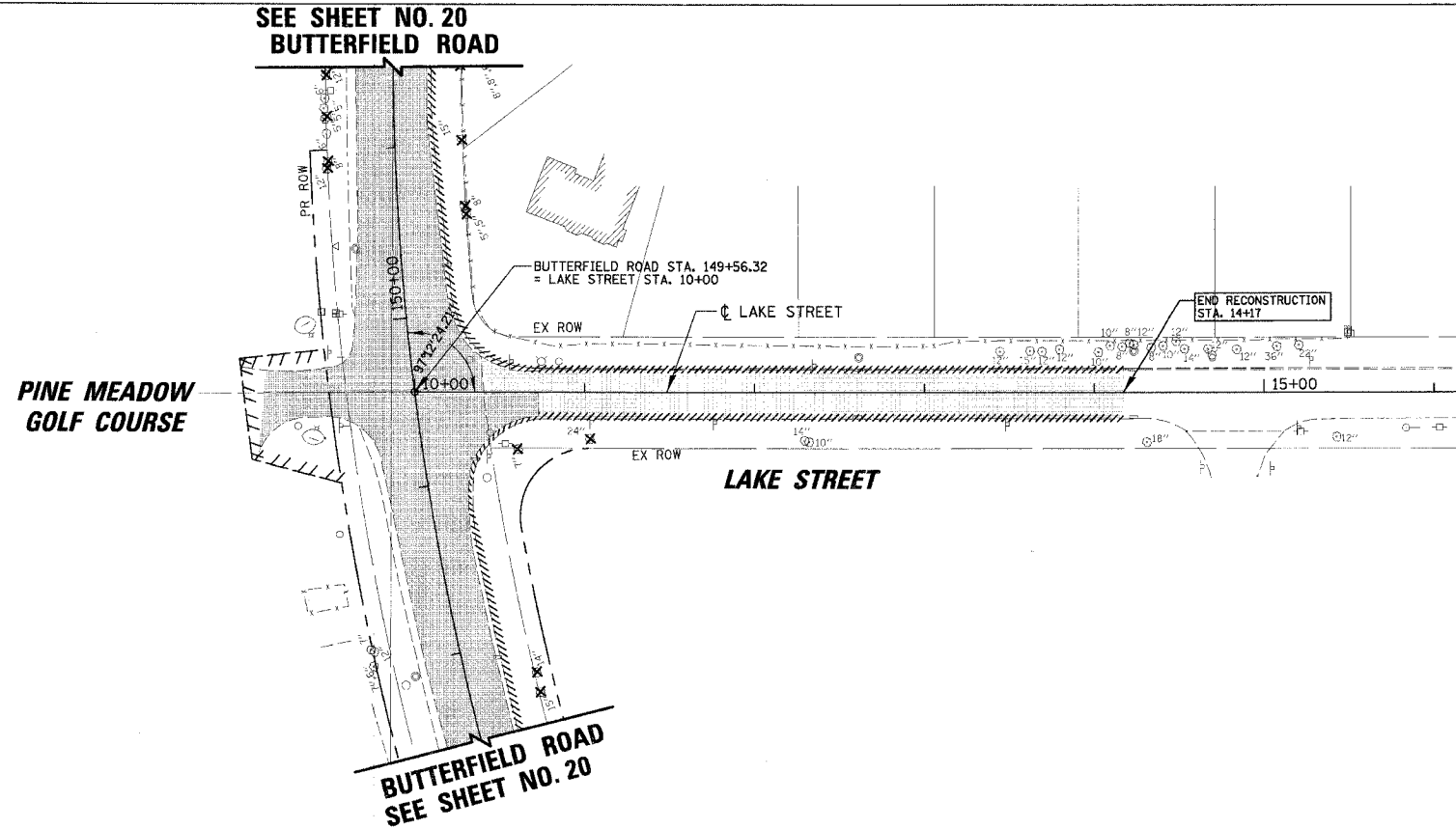
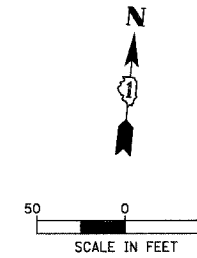


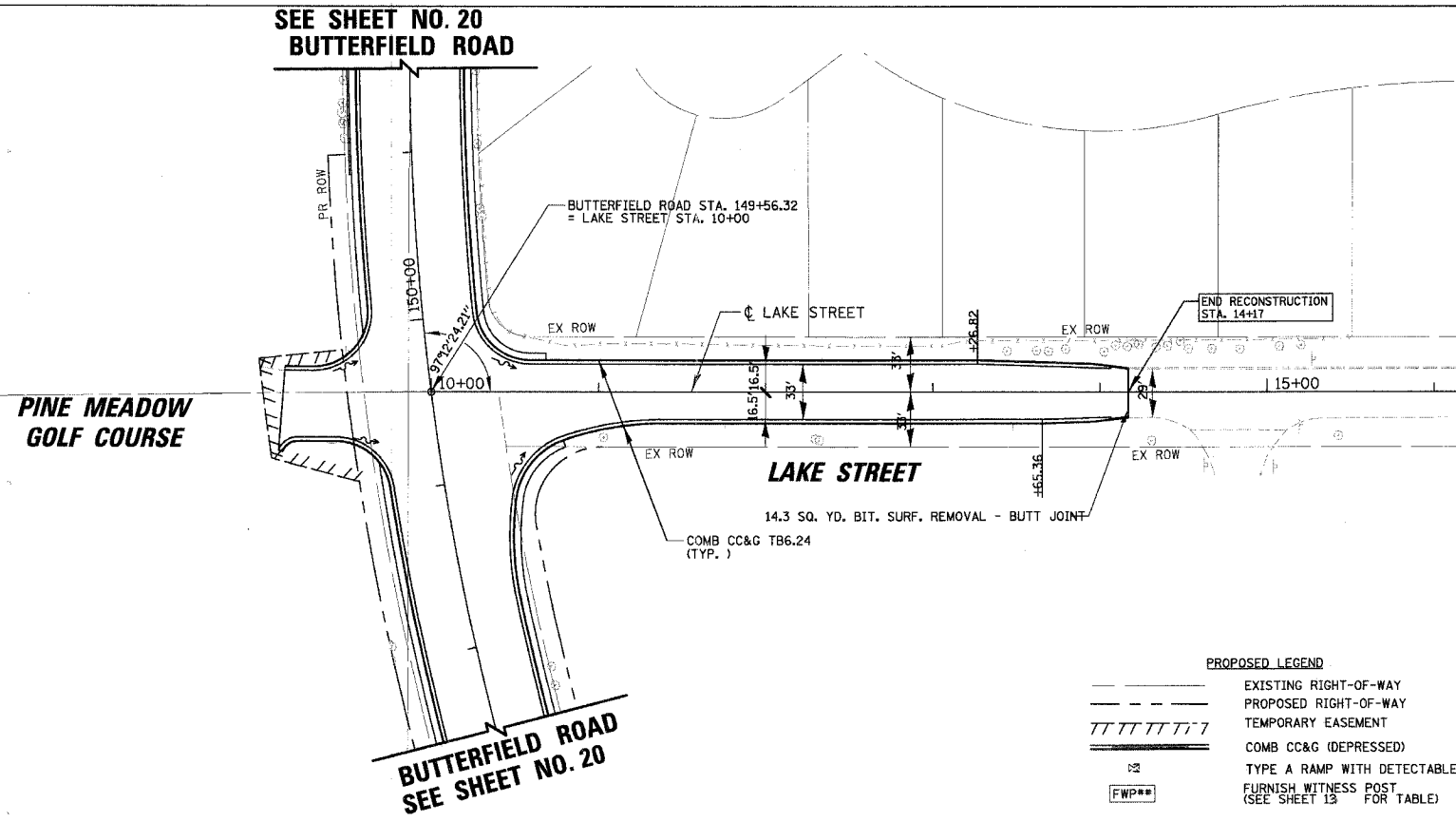
FAU	SECTION	COUNTY	TOTAL SHEETS	SHEET NO.
2647	99-00142-07-WR	LAKE	256	25
CONTRACT NO: 83815				
FED. ROAD DIST. NO. 1 ILLINOIS FED. AID PROJECT				



EXISTING CONDITIONS

EXISTING LEGEND

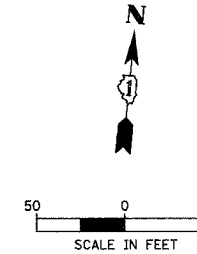
	PAVEMENT REMOVAL (BITUMINOUS)
	PAVEMENT REMOVAL (CONCRETE)
	BITUMINOUS SURFACE REMOVAL; 2 1/2"
	DRIVEWAY REMOVAL
	SIDEWALK REMOVAL
	TREE REMOVAL (OF SIZE SHOWN)
	CURB AND GUTTER OR CURB REMOVAL
	FENCE REMOVAL



PROPOSED CONDITIONS

PROPOSED LEGEND

	EXISTING RIGHT-OF-WAY
	PROPOSED RIGHT-OF-WAY
	TEMPORARY EASEMENT
	COMB CC&G (DEPRESSED)
	TYPE A RAMP WITH DETECTABLE WARNINGS
	FURNISH WITNESS POST (SEE SHEET 13 FOR TABLE)



NOTE:
 DETECTABLE WARNING SIGNS SHALL BE PLACED IN SIDEWALK BEHIND DEPRESSED CONCRETE CURB AND GUTTER PER IDOT STANDARD.
 SEE MEDIAN DETAIL, SHEET NO. 88 AND IDOT STANDARD 606306-02 FOR TREATMENT OF ALL MEDIAN NOSES.

REVISIONS	
NAME	DATE

ILLINOIS DEPARTMENT OF TRANSPORTATION
FAU 2647 - BUTTERFIELD ROAD
ROADWAY PLAN
LAKE STREET
STA. 10+00 TO 14+17

SCALE: 1:50
 DATE: 12/2/2005
 DRAWN BY: ELA, PMM
 CHECKED BY: BLL