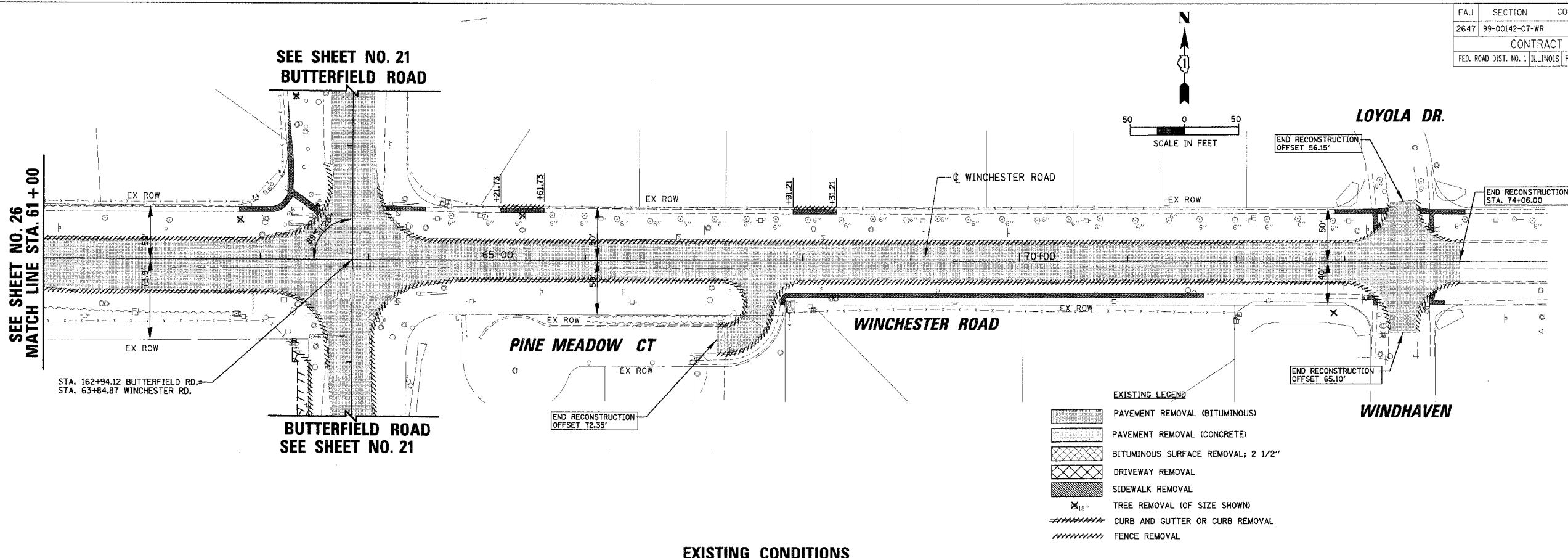


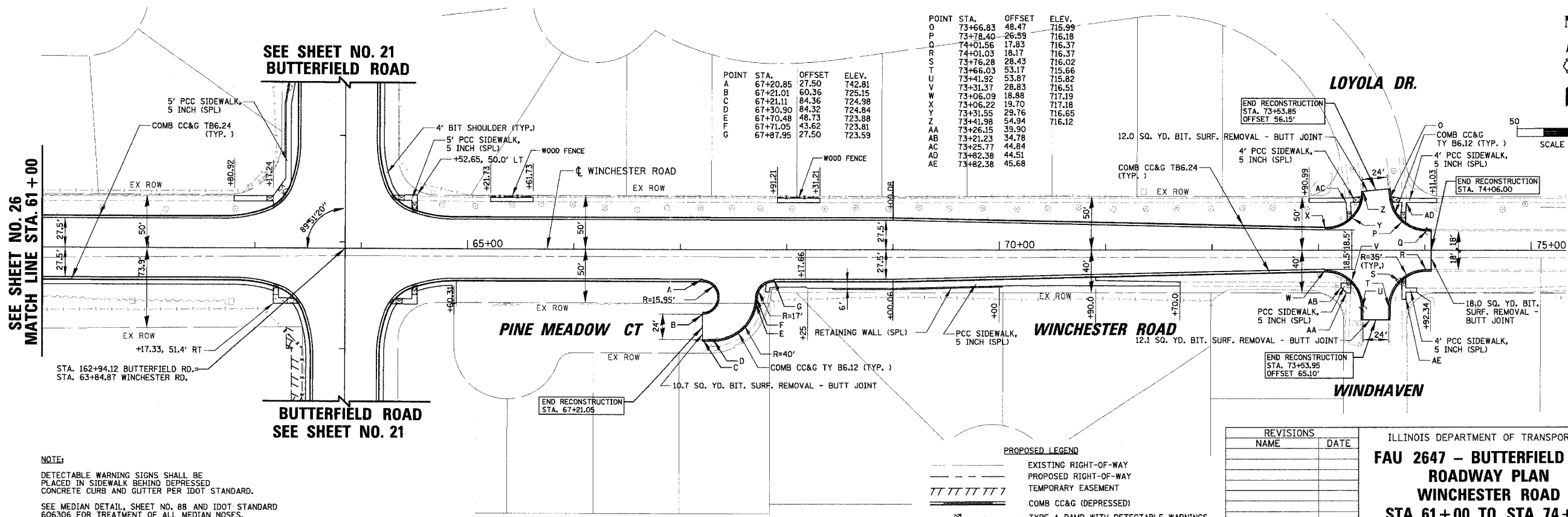
FAU	SECTION	COUNTY	TOTAL SHEETS	SHEET NO.
2647	99-00142-07-WR	LAKE	256	27
CONTRACT NO: 83815				
FED. ROAD DIST. NO. 1 ILLINOIS FED. AID PROJECT				



**EXISTING LEGEND**

- PAVEMENT REMOVAL (BITUMINOUS)
- PAVEMENT REMOVAL (CONCRETE)
- BITUMINOUS SURFACE REMOVAL; 2 1/2"
- DRIVEWAY REMOVAL
- SIDEWALK REMOVAL
- TREE REMOVAL (OF SIZE SHOWN)
- CURB AND GUTTER OR CURB REMOVAL
- FENCE REMOVAL

**EXISTING CONDITIONS**



POINT	STA.	OFFSET	ELEV.
O	73+66.83	48.47	715.99
P	73+78.40	26.59	716.18
Q	74+01.56	17.83	716.37
R	74+01.03	16.17	716.37
S	73+76.28	28.43	716.02
T	73+66.03	53.17	715.66
U	73+41.92	53.87	715.82
V	73+31.37	28.83	716.51
W	73+06.09	18.88	717.19
X	73+06.22	19.70	717.18
Y	73+31.55	29.76	716.65
Z	73+41.98	54.34	716.12
AA	73+26.15	39.90	
AB	73+21.23	34.78	
AC	73+25.77	44.84	
AD	73+82.38	44.51	
AE	73+82.38	45.68	

**PROPOSED LEGEND**

- EXISTING RIGHT-OF-WAY
- PROPOSED RIGHT-OF-WAY
- TEMPORARY EASEMENT
- COMB CC&G (DEPRESSED)
- TYPE A RAMP WITH DETECTABLE WARNINGS
- FURNISH WITNESS POST (SEE SHEET 19 FOR TABLE)

REVISIONS	
NAME	DATE

ILLINOIS DEPARTMENT OF TRANSPORTATION  
**FAU 2647 - BUTTERFIELD ROAD ROADWAY PLAN**  
**WINCHESTER ROAD**  
**STA. 61 + 00 TO STA. 74 + 06**  
 SCALE: 1:50  
 DATE: 12/2/2005  
 DRAWN BY: ELA, PMM  
 CHECKED BY: BLL

**NOTE:**  
 DETECTABLE WARNING SIGNS SHALL BE PLACED IN SIDEWALK BEHIND DEPRESSED CONCRETE CURB AND GUTTER PER IDOT STANDARD.  
 SEE MEDIAN DETAIL, SHEET NO. 88 AND IDOT STANDARD 606306 FOR TREATMENT OF ALL MEDIAN NOSES.

N:\LIBERTYVILLE\99-389\CIVIL\99389.TBL  
 12/2/2005 N:\LIBERTYVILLE\99-389\CIVIL\99389\_10.DWG  
 1:50