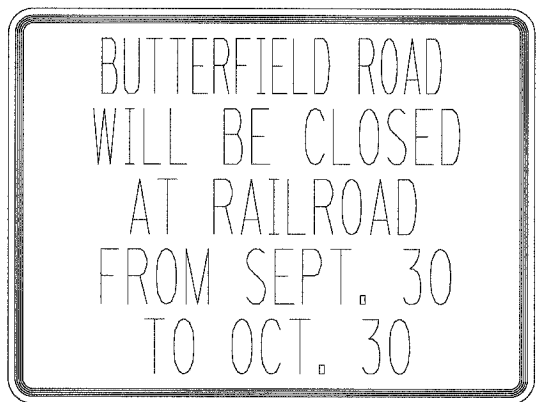


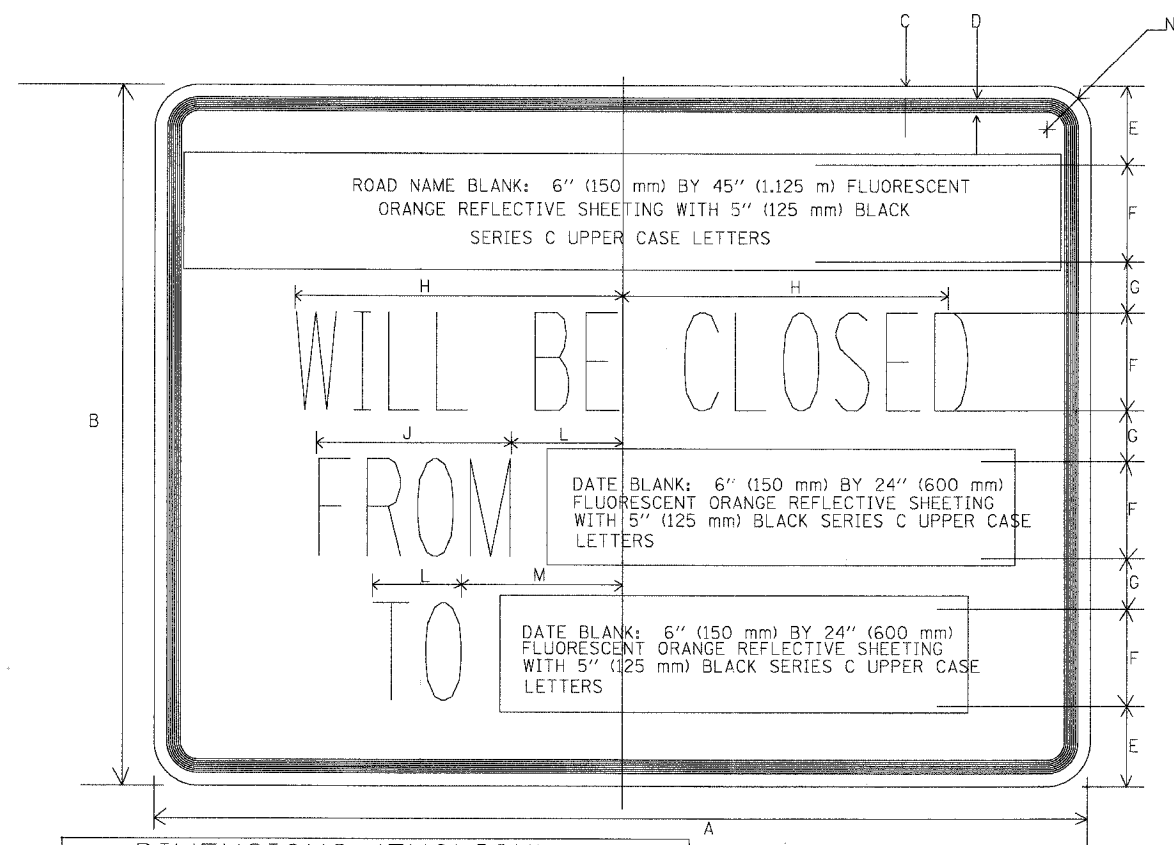
# DETOUR INFORMATION SIGNS



NUMBER OF SIGNS 1  
DATE SHOWN IS FOR EXAMPLE ONLY



NUMBER OF SIGNS 6



DIMENSIONS (ENGLISH)													
	A	B	C	D	E	F	G	H	J	K	L	M	N
STD.	48	36	5/8	7/8	4/8	5	2 5/8	9 3/4	12	5 1/2	5 1/2	8 1/2	2 1/4
DIMENSIONS (S.I.)													
	A	B	C	D	E	F	G	H	J	K	L	M	N
STD.	1.2 m	900 mm	12 mm	19 mm	103 mm	125 mm	66 mm	325 mm	138 mm	138 mm	219 mm	56 mm	

NOTE: SIGN SHEETING SHALL BE FLUORESCENT ORANGE WITH 5 INCH (125 mm) BLACK SERIES C LETTERS.

### DETOUR GENERAL NOTES

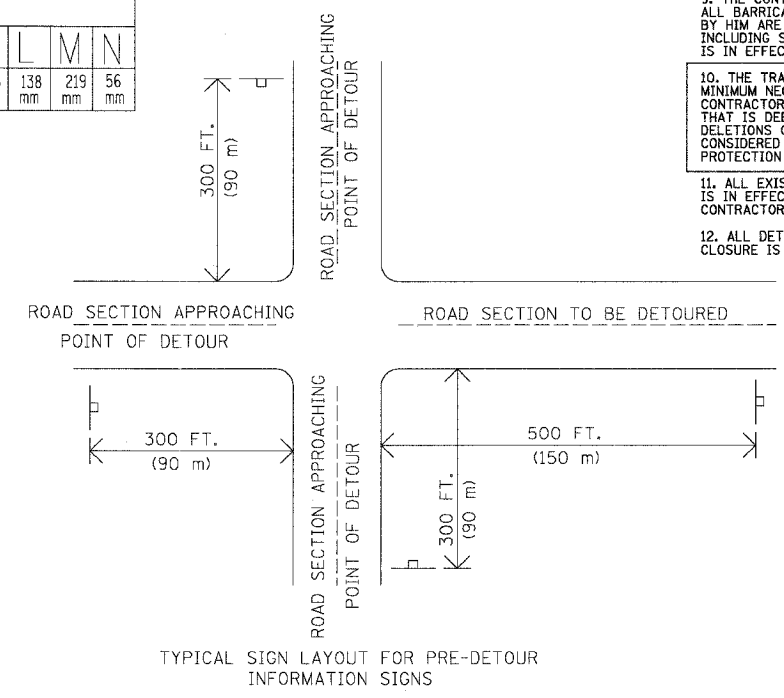
- ALL SIGNING SHALL BE IN ACCORDANCE WITH THE APPLICABLE PROVISIONS OF THE STATE OF ILLINOIS "STANDARD SPECIFICATIONS FOR ROAD AND BRIDGE CONSTRUCTION ADOPTED JANUARY 1, 2002", "THE QUALITY STANDARD FOR WORK ZONE TRAFFIC CONTROL DEVICES ADOPTED 2004", THE DETAILS IN THESE PLANS, THE LATEST EDITION OF THE STATE OF ILLINOIS "MANUAL OF UNIFORM TRAFFIC CONTROL DEVICES", THE SPECIAL PROVISIONS FOR TRAFFIC CONTROL AND PROTECTION (LC-T-700 NOS. A ND 2) AND THE L.C.D.O.T. DETOUR PROCEDURES AND GUIDELINES.
- THE DURATION OF THIS DETOUR SHALL NOT EXCEED (SEE BELOW) CONSECUTIVE CALENDAR DAYS. THE CONTRACTOR SHALL PROCEED WITH THE WORK IN AN EXPEDIENT MANNER TO REDUCE THE LENGTH OF TIME THAT THE DETOUR NEEDS TO BE IN EFFECT.
- THE ENGINEER SHALL BE NOTIFIED IN WRITING AT LEAST THREE WEEKS PRIOR TO THE DAY THE DETOUR IS TO BE IN EFFECT. THE ENGINEER SHALL DETERMINE THE HOUR OF CLOSURE. THE ENGINEER WILL CONTACT THE APPROPRIATE LOCAL AGENCIES AND INTERESTED PARTIES.
- IF DEEMED NECESSARY BY THE ENGINEER A PRE-CONSTRUCTION MEETING WITH THE CONTRACTOR SHALL BE HELD AT LEAST TWO WEEKS PRIOR TO THE DAY THE DETOUR IS TO BE IN EFFECT.
- THE CONTRACTOR SHALL SUPPLY TO THE ENGINEER THE NAMES AND TELEPHONE NUMBERS OF HIS REPRESENTATIVES ON THE CONSTRUCTION SITE AND HIS REPRESENTATIVE RESPONSIBLE FOR THE DETOUR SIGNING PRIOR TO THE START OF THE WORK. THE LAKE COUNTY DIVISION OF TRANSPORTATION REPRESENTATIVE FOR THIS DETOUR IS:  
  
JOHN P. SAUTER  
LAKE COUNTY DIVISION OF TRANSPORTATION  
TRAFFIC ENGINEERING SECTION  
600 W. WINCHESTER ROAD  
LIBERTYVILLE, ILLINOIS 60048  
(847) 362-3950
- IF REQUESTED BY THE CONTRACTOR IN WRITING AT LEAST THREE WEEKS PRIOR TO THE DAY THE DETOUR IS TO BE IN EFFECT THE ENGINEER WILL FIELD LOCATE THE POSITIONS OF ANY SIGNS.
- LONGITUDINAL DIMENSIONS SHOWN ON THESE PLANS MAY BE ADJUSTED TO FIT FIELD CONDITIONS, WITH THE APPROVAL OF THE ENGINEER.
- THE ROAD SHALL NOT BE CLOSED UNTIL ALL SIGNING IS ERECTED IN ACCORDANCE WITH THE DETOUR PLAN AND INSPECTED AND APPROVED BY THE ENGINEER.
- THE CONTRACTOR SHALL BE RESPONSIBLE FOR ENSURING THAT ALL BARRICADES, SIGNS, LIGHTS, AND OTHER DEVICES INSTALLED BY HIM ARE IN PLACE AND OPERATING 24 HOURS EACH DAY INCLUDING SUNDAYS AND HOLIDAYS DURING THE TIME THE DETOUR IS IN EFFECT.
- THE TRAFFIC CONTROL SHOWN ON THE DETOUR PLAN IS THE MINIMUM NECESSARY TO ENSURE THIS ROAD CLOSURE. THE CONTRACTOR SHALL MAKE ALL CHANGES IN TRAFFIC CONTROL THAT IS DEEMED NECESSARY BY THE ENGINEER. ADDITIONS AND DELETIONS OF TRAFFIC CONTROL FOR THIS DETOUR SHALL BE CONSIDERED INCIDENTAL TO THE PAY ITEM "TRAFFIC CONTROL AND PROTECTION (SPECIAL)".
- ALL EXISTING SIGNING THAT IS NOT APPLICABLE WHILE THE DETOUR IS IN EFFECT SHALL BE COMPLETELY COVERED BY THE CONTRACTOR, IN A MANNER APPROVED BY THE ENGINEER.
- ALL DETOUR SIGNING SHALL BE POST MOUNTED IF THE ROAD CLOSURE IS TO EXCEED FOUR (4) CALENDAR DAYS.
- ALL DETOUR SIGNING EXCEPT REGULATORY SIGNS SHALL HAVE BLACK LEGENDS ON FLUORESCENT ORANGE SHEETING AND STANDARD BLACK BORDERS. THE FLUORESCENT ORANGE REFLECTIVE SHEETING SHALL MEET THE REQUIREMENTS OF ARTICLE 1084.02 OF THE STANDARD SPECIFICATIONS. ALL DETOUR SIGNING SHALL BE NEW OR LIKE NEW CONDITION OF THE SIGNS. THE ENGINEER SHALL BE THE SOLE JUDGE OF THE CONDITION OF THE SIGNS.
- THE SIZES OF ALL SIGNS NOT SPECIFIED IN THESE PLANS SHALL BE AS REQUIRED BY THE ILLINOIS MANUAL ON UNIFORM TRAFFIC CONTROL DEVICES.
- AS A MINIMUM, ALL AMBER FLASHING LIGHTS THAT ARE REQUIRED FOR THIS DETOUR SHALL MEET THE REQUIREMENTS FOR TYPE A-LOW INTENSITY FLASHING LIGHTS IN ARTICLE 1084.01 OF THE STANDARD SPECIFICATIONS. ALL LIGHTS SHALL OPERATE DURING THE HOURS OF DARKNESS. ONLY LIGHTS THAT HAVE BEEN APPROVED BY THE ILLINOIS DEPARTMENT OF TRANSPORTATION SHALL BE USED.
- WHEN REQUIRED THE MINIMUM DIMENSIONS OF THE ORANGE WARNING FLAGS SHOWN IN THESE PLANS ARE 18" X 18".
- ALL BARRICADES SHALL HAVE REFLECTORIZED STRIPING ON BOTH SIDES OF THE BARRICADES. THE TYPE III BARRICADES USED AT THE POINT OF CLOSURE TO THRU TRAFFIC SHALL NOT EXCEED 8 FEET IN WIDTH EACH, FOR A SINGLE APPROACH LANE.
- THE "ROAD CLOSED" (R11-2), THE "ROAD CLOSED XX MILES AHEAD LOCAL TRAFFIC ONLY" (R11-3) AND THE "ROAD CLOSED TO THRU TRAFFIC" (R11-4) SIGNS SHALL BE MOUNTED ABOVE THE TOP OF THE BARRICADE. ALL TYPE III BARRICADES SHALL HAVE TWO (2) AMBER TYPE A-LOW INTENSITY FLASHING LIGHTS SPACED NEAR THE CENTERLINE OF THE SUPPORTS.
- THE ROAD NAME SIGN SHALL HAVE A BLACK LEGEND ON FLUORESCENT ORANGE REFLECTIVE SHEETING. THE SIGN BLANK SHALL BE A 9" X VARIABLE OR A 12" X VARIABLE WITH DESIGN SERIES C LETTERS. THE CAPITAL LETTERS SHALL BE 6" WITH 5" LOWER CASE.
- DURING NON-WORKING HOURS AT THE POINT OF ROAD CLOSURE TO ALL TRAFFIC THE CONTRACTOR SHALL PROVIDE A MEANS TO RESTRAIN THE BARRICADES FROM EASY MOVEMENT BY VANDALS. THE CHOSEN METHOD SHALL BE APPROVED BY THE ENGINEER.
- CONSTRUCTION EQUIPMENT SHALL NOT BE PARKED IMMEDIATELY BEHIND THE TYPE III BARRICADES DURING NON-WORKING HOURS. IN ANY EVENT ARTICLE 701.04 OF THE STANDARD SPECIFICATIONS SHALL APPLY.
- THE CONTRACTOR SHALL BE RESPONSIBLE FOR MAINTAINING THE VISIBILITY OF ALL DETOUR AND CONSTRUCTION SIGNING, INCLUDING BRUSHING BACK VEGETATION IF DEEMED NECESSARY BY THE ENGINEER.
- THE FOLLOWING ILLINOIS DEPARTMENT OF TRANSPORTATION STANDARD IS APPLICABLE FOR THIS WORK:  
  
STANDARD 702001-05
- THE ENGINEER SHALL BE NOTIFIED AT LEAST TWO (2) HOURS BEFORE THE ROAD IS TO BE OPENED TO TRAFFIC. THE ENGINEER WILL CONTACT THE APPROPRIATE LOCAL AGENCIES AND INTERESTED PARTIES.
- THE PENALTY FOR EXCEEDING THE TIME LIMIT, AS STATED IN DETOUR GENERAL NOTE TWO OF THESE PLANS, SHALL EQUAL THE CHARGE FOR TRAFFIC CONTROL DEFICIENCY OF \$1000.00 PER DAY, FOR EVERY CALENDAR DAY THE DETOUR AND ROAD CLOSURE EXCEEDS THE TIME LIMIT SET IN DETOUR GENERAL NOTE TWO. THIS PENALTY CAN BE ASSESSED IN ADDITION TO THE PENALTY SPECIFIED IN THE SPECIAL PROVISION FOR TRAFFIC CONTROL AND PROTECTION AND BOTH PENALTIES CAN BE CHARGED CONCURRENTLY.

### LOCATIONS OF PRE-DETOUR INFORMATION SIGNS BY INTERSECTION

**BUTTERFIELD ROAD DETOUR ROUTE**  
 SOUTHBOUND BUTTERFIELD ROAD APPROACHING IL RTE 137  
 WESTBOUND ILLINOIS ROUTE 137 APPROACHING BUTTERFIELD ROAD  
 EASTBOUND ILLINOIS ROUTE 137 APPROACHING BUTTERFIELD ROAD  
 NORTHBOUND BUTTERFIELD ROAD APPROACHING WINCHESTER ROAD  
 WESTBOUND WINCHESTER ROAD APPROACHING BUTTERFIELD ROAD  
 EASTBOUND WINCHESTER ROAD APPROACHING BUTTERFIELD ROAD

**WESTBOUND LAKE STREET DETOUR ROUTE**  
 WESTBOUND LAKE STREET APPROACHING BUTTERFIELD ROAD  
 NORTHBOUND IL RTE 21 APPROACHING LAKE STREET  
 SOUTHBOUND IL RTE 21 APPROACHING LAKE STREET

NOTE: THE PRE-DETOUR SIGNS SHALL BE INSTALLED 7-10 CALENDAR DAYS PRIOR TO THE DETOUR AND ROAD CLOSURE. THE SIGNS SHALL BE REMOVED THE DAY THE DETOUR BEGINS



REVISIONS	
NAME	DATE

ILLINOIS DEPARTMENT OF TRANSPORTATION  
**FAU 2647 - BUTTERFIELD ROAD**  
**DETOUR NOTES**

SCALE: NONE  
 DATE: 12/5/2005

DRAWN BY: PMM  
 CHECKED BY: BLL