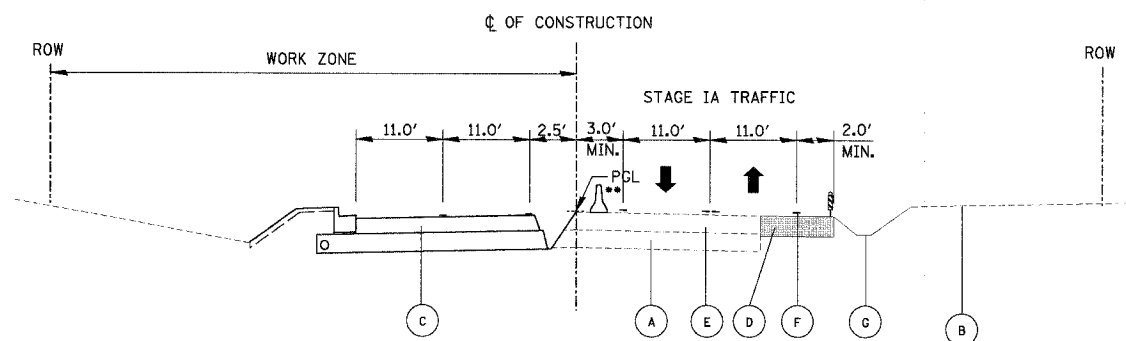
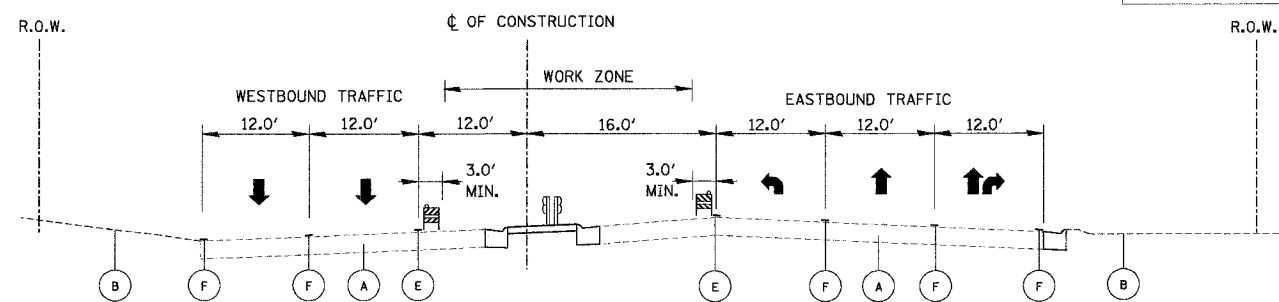


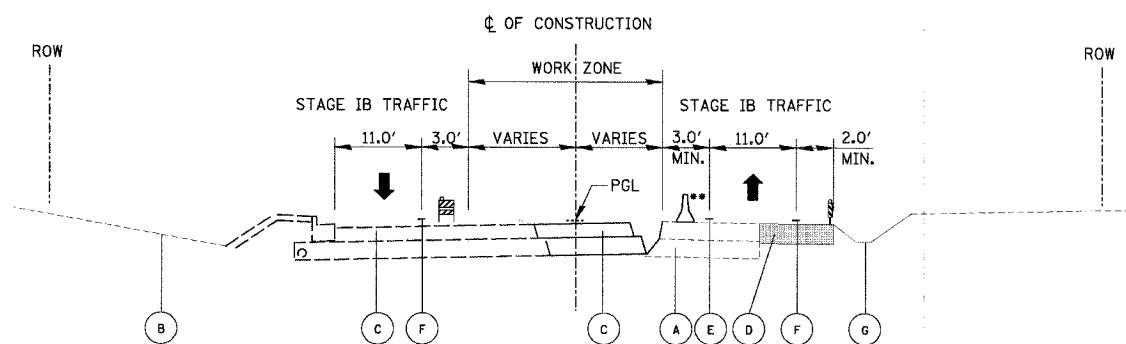
FAU	SECTION	COUNTY	TOTAL SHEETS	SHEET NO.
2647	99-00142-07-WR	LAKE	256	38
CONTRACT NO: 83815				
FED. ROAD DIST. NO. 1 ILLINOIS FED. AID PROJECT				



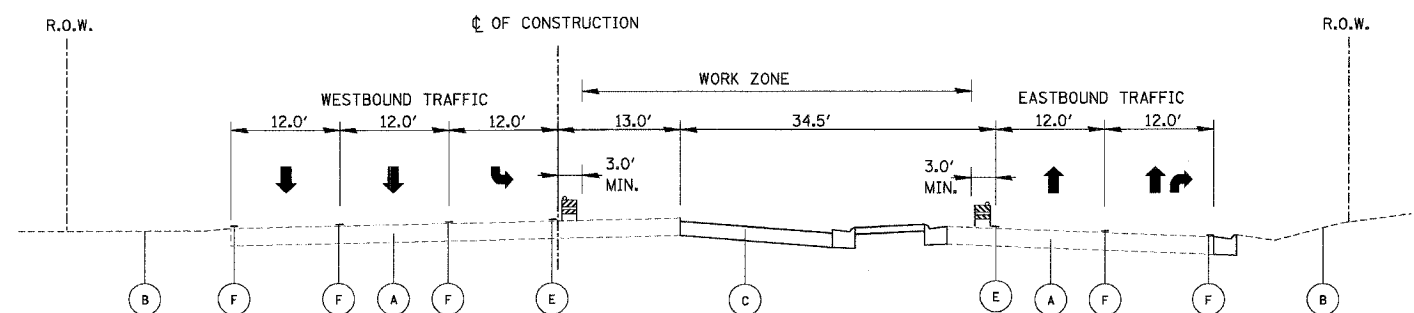
PROPOSED TYPICAL RECONSTRUCTION - STAGE IA
WINCHESTER ROAD
 STA. 49+40 TO STA. 74+06



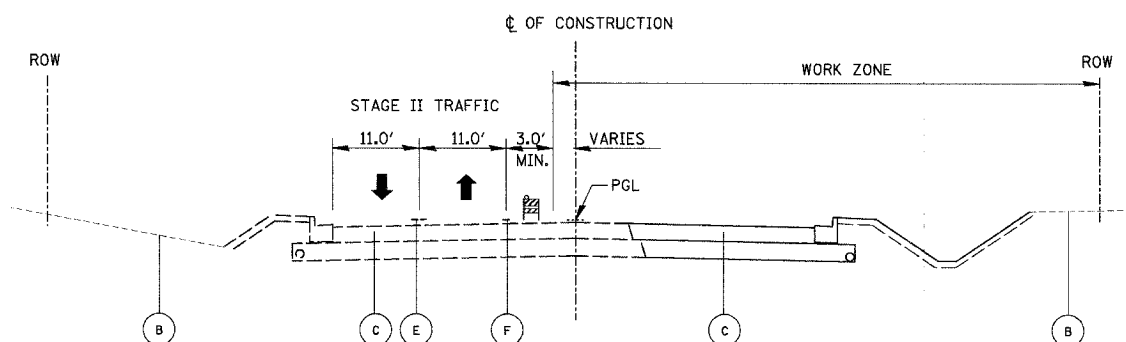
PROPOSED TYPICAL RECONSTRUCTION STAGE IB
IL RTE 137
 STA. 684+40 TO STA. 700+00



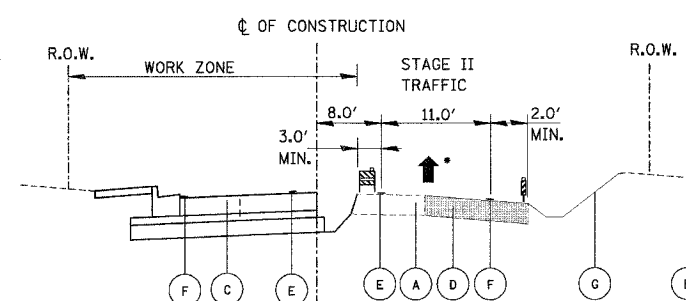
PROPOSED TYPICAL RECONSTRUCTION - STAGE IB
WINCHESTER ROAD
 STA. 49+40 TO STA. 74+06



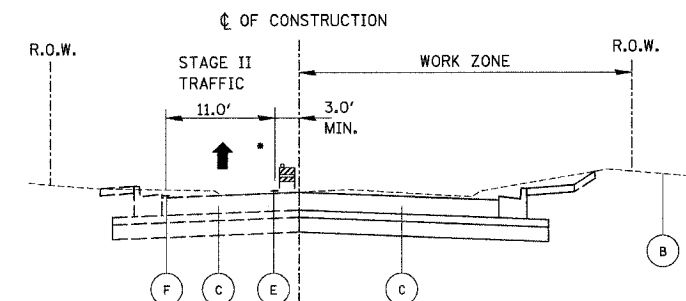
PROPOSED TYPICAL RECONSTRUCTION STAGE IB
IL RTE 137
 STA. 700+00 TO STA. 713+25



PROPOSED TYPICAL RECONSTRUCTION - STAGE II
WINCHESTER ROAD
 STA. 49+40 TO STA. 74+06



PROPOSED TYPICAL RECONSTRUCTION STAGE II
LAKE STREET
 STA. 10+00 TO STA. 14+17



PROPOSED TYPICAL RECONSTRUCTION STAGE II
LAKE STREET
 STA. 10+00 TO STA. 14+17

• ONE WAY TRAFFIC ONLY.
 SEE LAKE STREET DETOUR ROUTE, SHEET 35.

LEGEND

- (A) EXISTING ROADWAY
- (B) EXISTING GROUND
- (C) PROPOSED ROADWAY
- (D) TEMPORARY PAVEMENT SUPERPAVE
- (E) TEMPORARY PAVEMENT MARKING - LINE, YELLOW
- (F) TEMPORARY PAVEMENT MARKING - LINE, WHITE
- (G) TEMPORARY DRAINAGE AND EROSION CONTROL
- (H) CONCRETE MEDIAN OR LANDSCAPED MEDIAN
- (I) SHORT TERM PAVEMENT MARKING
- [Symbol] TYPE II BARRICADE OR WITH LIGHT
- [Symbol] VERTICAL PANEL WITH LIGHT
- [Symbol] TEMPORARY CONCRETE BARRIER WALL WITH MONODIRECTIONAL PRISMATIC BARRIER REFLECTORS **

** TEMPORARY BARRIER WALL TO BE PLACED IN LIEU OF TYPE II BARRICADES WHERE ALL OF THE FOLLOWING CONDITIONS OCCUR, OR DIRECTED BY THE ENGINEER,

1. SIDESLOPE STEEPER THAN 4:1, OR DROPOFF > 2', TO PROPOSED SUBGRADE/BOTTOM OF UNDERCUT.
2. EDGE OF TRAVEL LANE CLOSER THAN 4 FEET TO TOP OF SIDESLOPE OR DROPOFF.

ALL TEMPORARY BARRIER WALL END TREATMENTS WILL HAVE ATTENUATING DEVICES AS SHOWN OR AS DIRECTED BY THE ENGINEER.

REVISIONS	
NAME	DATE

ILLINOIS DEPARTMENT OF TRANSPORTATION
FAU 2647 - BUTTERFIELD ROAD
SUGGESTED MAINTENANCE OF TRAFFIC - TYPICAL SECTIONS

SCALE: NONE
 DATE: 12/2/2005

DRAWN BY: PMM
 CHECKED BY: BLL

N:\LIBERTYVILLE\99-389\CIVIL\99389.TBL
 N:\LIBERTYVILLE\99-389\CIVIL\99389NOTES.MDT
 11:50 12/2/2005