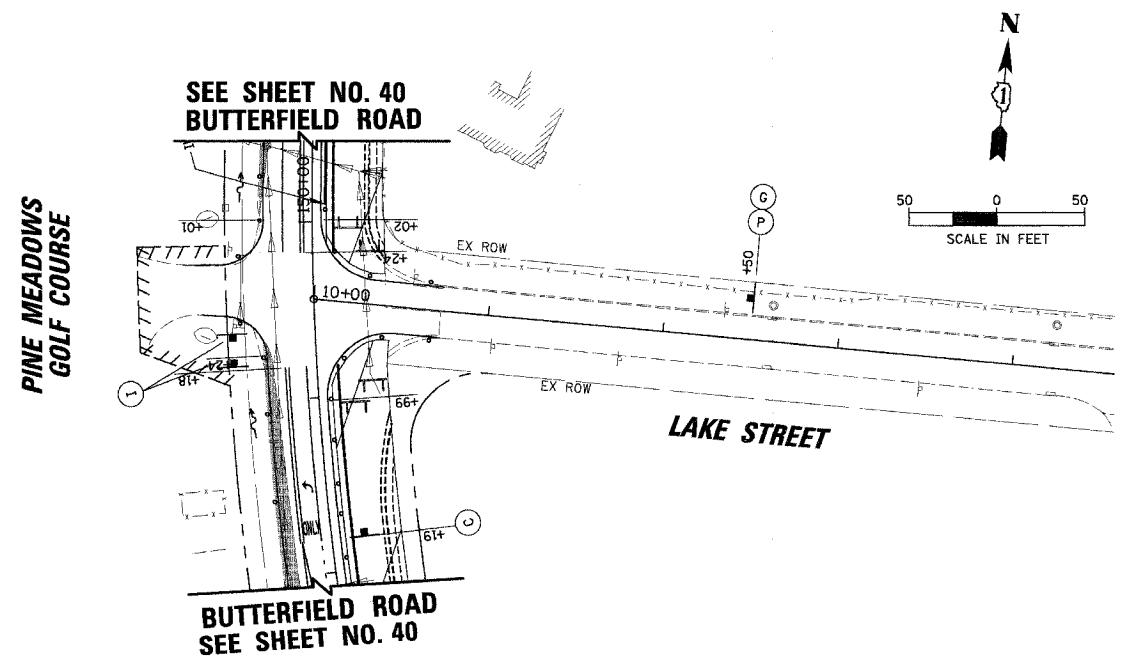
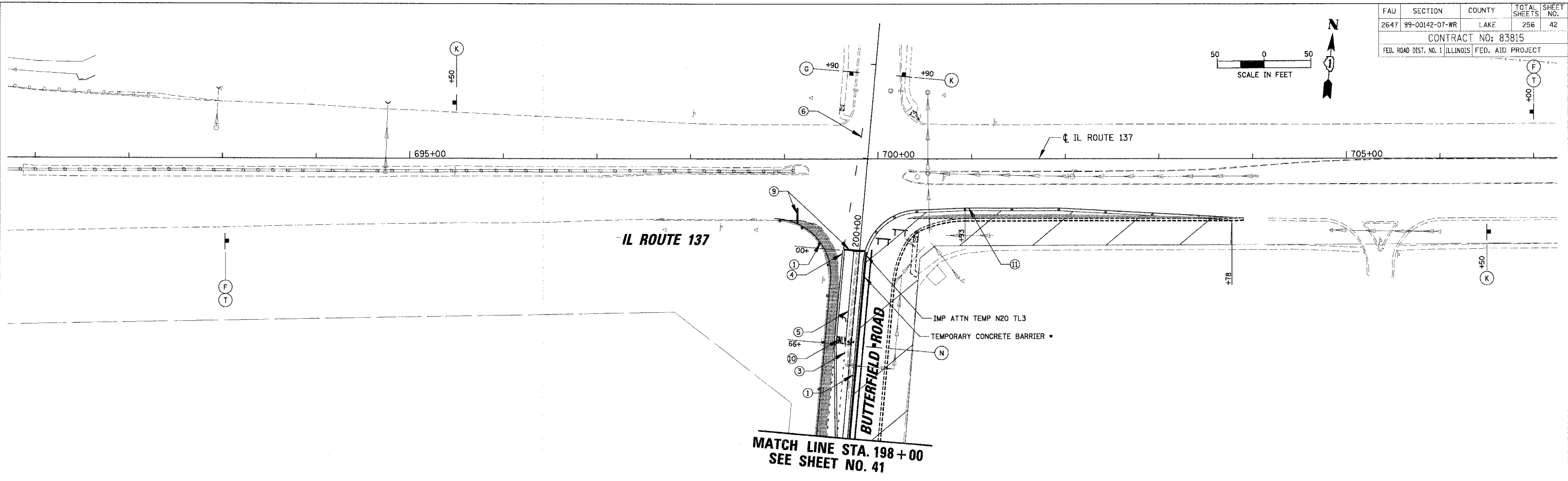


FAU	SECTION	COUNTY	TOTAL SHEETS	SHEET NO.
2647	99-00142-07-WR	LAKE	256	42
CONTRACT NO: 83815				
FED. ROAD DIST. NO. 1 ILLINOIS FED. AID PROJECT				



- LEGEND**
- ① TEMPORARY PAVEMENT MARKING - LINE 5" (WHITE)
 - ② TEMPORARY PAVEMENT MARKING - LINE 4" (WHITE SKIP-DASH 30'-10')
 - ③ TEMPORARY PAVEMENT MARKING - LINE 6" (WHITE SKIP-DASH 6'-2')
 - ④ TEMPORARY PAVEMENT MARKING - LINE 4" (DOUBLE YELLOW @ 11" C-C)
 - ⑤ TEMPORARY PAVEMENT MARKING - LINE 6" (WHITE)
 - ⑥ TEMPORARY PAVEMENT MARKING - LINE 4" (YELLOW)
 - ⑦ TEMPORARY PAVEMENT MARKING - LINE 12" (YELLOW DIAGONALS @ 20' C-C)
 - ⑧ TEMPORARY PAVEMENT MARKING - LINE 12" (WHITE DIAGONALS @ 10' C-C)
 - ⑨ TEMPORARY PAVEMENT MARKING - LINE 24" (WHITE)
 - ⑩ TEMPORARY PAVEMENT MARKING - LETTERS AND SYMBOLS (WHITE)
 - ⑪ TEMPORARY PAVEMENT MARKING - LINE 4" (WHITE)

- LEGEND**
- WORK ZONE
 - TEMPORARY PAVEMENT
 - TYPE II BARRICADE W/ LIGHT OR VERTICAL PANEL W/ LIGHT
 - TYPE II DIRECTIONAL BARRICADE W/ LIGHT
 - TYPE III BARRICADE W/ LIGHTS
 - WORK ZONE SIGN
 - TRAFFIC FLOW
 - ARROW BOARD
 - LIMIT OF PROPOSED PAVEMENT INSTALLED PER STAGE
 - TEMP DITCH FLOW

- TEMPORARY BARRIER WALL TO BE PLACED IN LIEU OF TYPE II BARRICADES WHERE ALL OF THE FOLLOWING CONDITIONS OCCUR, OR DIRECTED BY THE ENGINEER.
 - 1. SIDESLOPE STEEPER THAN 4:1, OR DROPOFF > 2', TO PROPOSED SUBGRADE/BOTTOM OF UNDERCUT.
 - 2. EDGE OF TRAVEL LANE CLOSER THAN 4 FEET TO TOP OF SIDESLOPE OR DROPOFF.
- ALL TEMPORARY BARRIER WALL END TREATMENTS WILL HAVE ATTENUATING DEVICES AS SHOWN OR AS DIRECTED BY THE ENGINEER.

REVISIONS	
NAME	DATE

ILLINOIS DEPARTMENT OF TRANSPORTATION
FAU 2647 - BUTTERFIELD ROAD
SUGGESTED STAGES OF CONSTRUCTION
AND TRAFFIC CONTROL - STAGE IA
IL RTE. 137 AND LAKE STREET

SCALE: 1:50
DATE: 12/2/2005

DRAWN BY: PMM
CHECKED BY: BLL

1:50
12/2/2005
N:\LIBERTYVILLE\99-389\CIVIL\99389.TBL
N:\LIBERTYVILLE\99-389\CIVIL\99389A_05.mcd