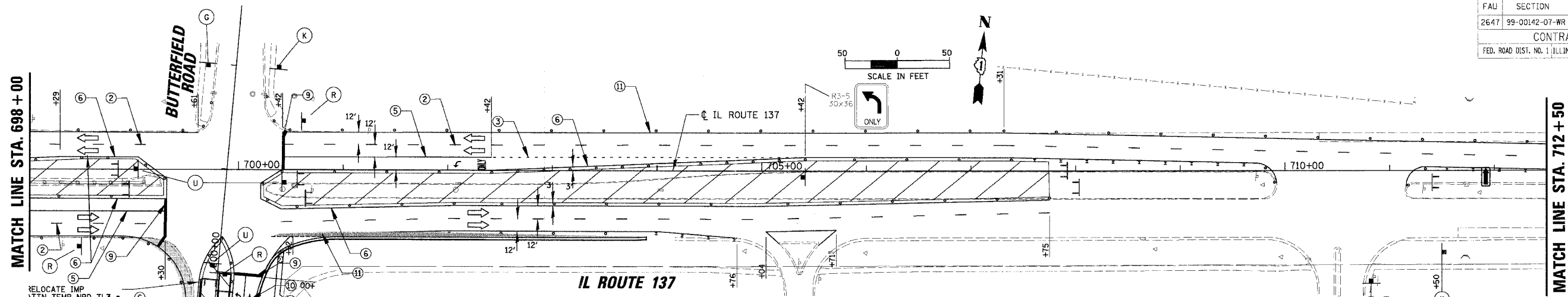


FAU	SECTION	COUNTY	TOTAL SHEETS	SHEET NO.
2647	99-00142-07-WR	LAKE	256	47
CONTRACT NO: 83815				
FED. ROAD DIST. NO. 1 ILLINOIS FED. AID PROJECT				

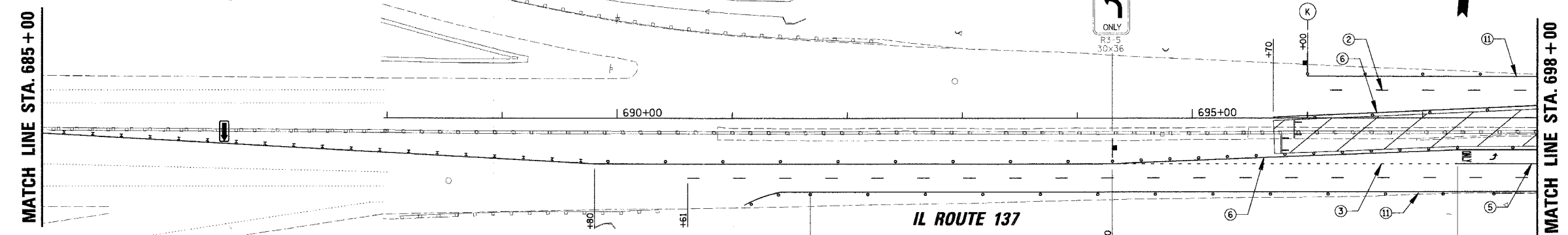
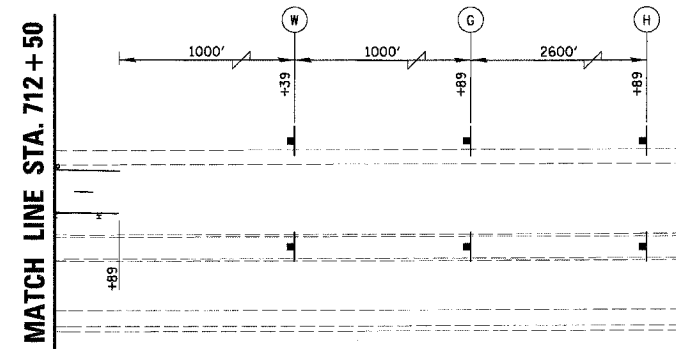


RELOCATE IMP
ATTN TEMP NRD TL3

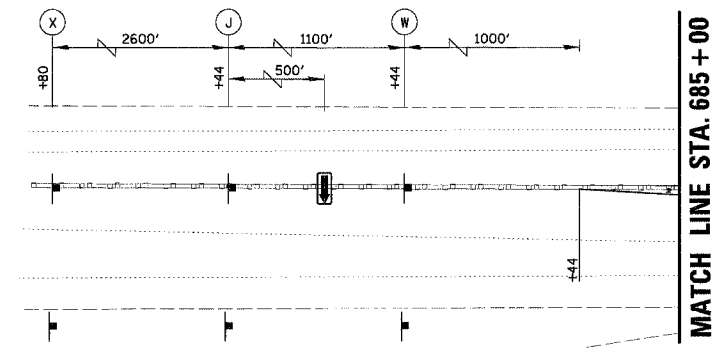
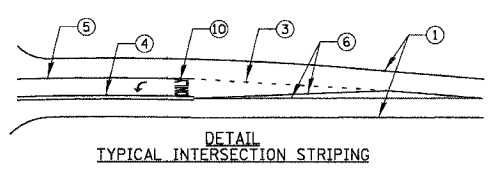
RELOCATE TEMPORARY
CONCRETE BARRIER

MATCH LINE STA. 198+00
SEE SHEET NO. 46

LEGEND		LEGEND	
①	TEMPORARY PAVEMENT MARKING - LINE 5" (WHITE)	[Hatched Box]	WORK ZONE
②	TEMPORARY PAVEMENT MARKING - LINE 4" (WHITE SKIP-DASH 30'-10')	[Dotted Box]	TEMPORARY PAVEMENT
③	TEMPORARY PAVEMENT MARKING - LINE 6" (WHITE SKIP-DASH 6'-2')	[Square with 'x']	TYPE II BARRICADE W/ LIGHT OR VERTICAL PANEL W/ LIGHT
④	TEMPORARY PAVEMENT MARKING - LINE 4" (DOUBLE YELLOW @ 11" C-C)	[Square with 'x' and arrow]	TYPE II DIRECTIONAL BARRICADE W/ LIGHT
⑤	TEMPORARY PAVEMENT MARKING - LINE 6" (WHITE)	[Square with 'x' and arrow]	TYPE III BARRICADE W/ LIGHTS
⑥	TEMPORARY PAVEMENT MARKING - LINE 4" (YELLOW)	[Arrow]	WORK ZONE SIGN
⑦	TEMPORARY PAVEMENT MARKING - LINE 12" (YELLOW DIAGONALS @ 20' C-C)	[Arrow]	TRAFFIC FLOW
⑧	TEMPORARY PAVEMENT MARKING - LINE 12" (WHITE DIAGONALS @ 10' C-C)	[Arrow]	ARROW BOARD
⑨	TEMPORARY PAVEMENT MARKING - LINE 24" (WHITE)	[Dashed Line]	LIMIT OF PROPOSED PAVEMENT INSTALLED PER STAGE
⑩	TEMPORARY PAVEMENT MARKING - LETTERS AND SYMBOLS (WHITE)	[Wavy Line]	TEMP DITCH FLOW
⑪	TEMPORARY PAVEMENT MARKING - LINE 4" (WHITE)		



- TEMPORARY BARRIER WALL TO BE PLACED IN LIEU OF TYPE II BARRICADES WHERE ALL OF THE FOLLOWING CONDITIONS OCCUR, OR DIRECTED BY THE ENGINEER.
 - SIDESLOPE STEEPER THAN 4:1, OR DROPOFF > 2', TO PROPOSED SUBGRADE/BOTTOM OF UNDERCUT.
 - EDGE OF TRAVEL LANE CLOSER THAN 4 FEET TO TOP OF SIDESLOPE OR DROPOFF.
- ALL TEMPORARY BARRIER WALL END TREATMENTS WILL HAVE ATTENUATING DEVICES AS SHOWN OR AS DIRECTED BY THE ENGINEER.



REVISIONS	
NAME	DATE

ILLINOIS DEPARTMENT OF TRANSPORTATION
FAU 2647 - BUTTERFIELD ROAD
SUGGESTED STAGES OF CONSTRUCTION
AND TRAFFIC CONTROL - STAGE IB
IL RTE. 137 AND LAKE STREET

SCALE: 1:50
DATE: 12/2/2005

DRAWN BY: PMM
CHECKED BY: BLL