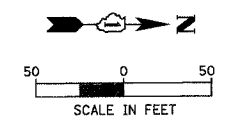
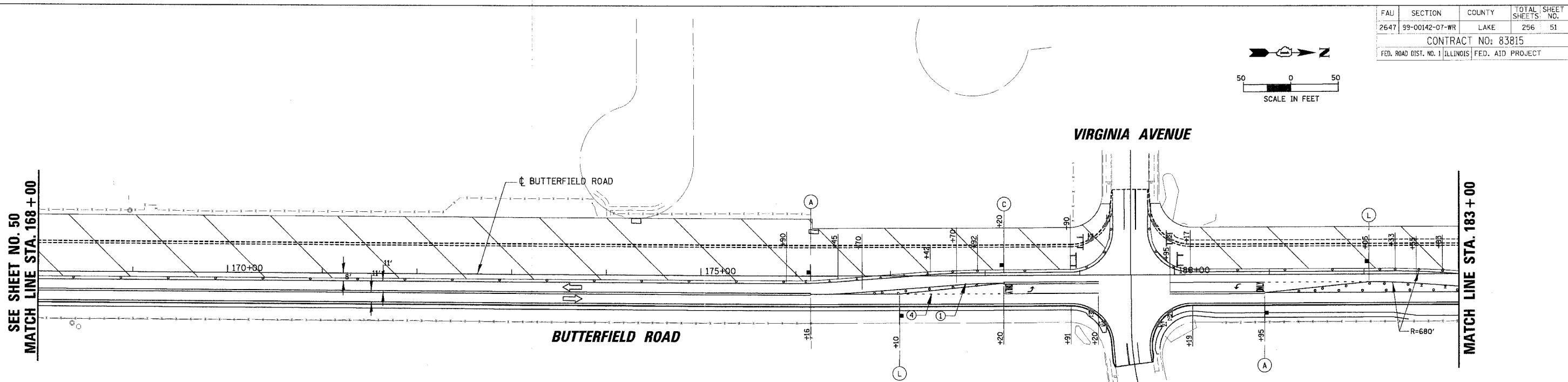


FAU	SECTION	COUNTY	TOTAL SHEETS	SHEET NO.
2647	99-00142-07-WR	LAKE	256	51
CONTRACT NO: 83815				
FED. ROAD DIST. NO. 1 ILLINOIS FED. AID PROJECT				

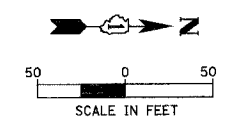
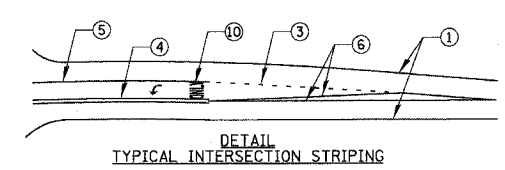


SEE SHEET NO. 50  
MATCH LINE STA. 168+00

MATCH LINE STA. 183+00

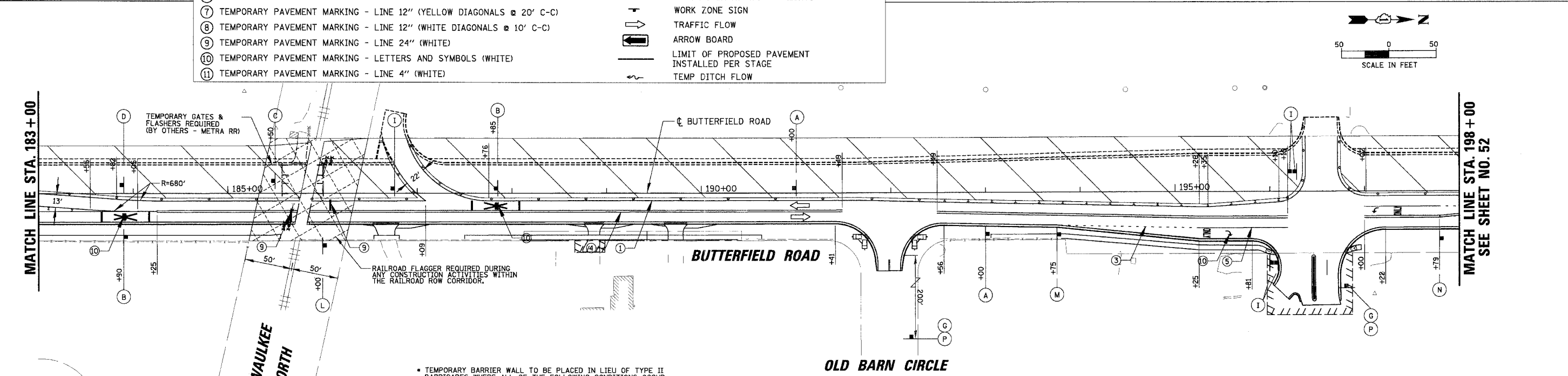


LEGEND		LEGEND	
①	TEMPORARY PAVEMENT MARKING - LINE 5" (WHITE)		WORK ZONE
②	TEMPORARY PAVEMENT MARKING - LINE 4" (WHITE SKIP-DASH 30'-10')		TEMPORARY PAVEMENT
③	TEMPORARY PAVEMENT MARKING - LINE 6" (WHITE SKIP-DASH 6'-2')		TYPE II BARRICADE W/ LIGHT OR VERTICAL PANEL W/ LIGHT
④	TEMPORARY PAVEMENT MARKING - LINE 4" (DOUBLE YELLOW @ 11" C-C)		TYPE II DIRECTIONAL BARRICADE W/ LIGHT
⑤	TEMPORARY PAVEMENT MARKING - LINE 6" (WHITE)		TYPE III BARRICADE W/ LIGHTS
⑥	TEMPORARY PAVEMENT MARKING - LINE 4" (YELLOW)		WORK ZONE SIGN
⑦	TEMPORARY PAVEMENT MARKING - LINE 12" (YELLOW DIAGONALS @ 20' C-C)		TRAFFIC FLOW
⑧	TEMPORARY PAVEMENT MARKING - LINE 12" (WHITE DIAGONALS @ 10' C-C)		ARROW BOARD
⑨	TEMPORARY PAVEMENT MARKING - LINE 24" (WHITE)		LIMIT OF PROPOSED PAVEMENT INSTALLED PER STAGE
⑩	TEMPORARY PAVEMENT MARKING - LETTERS AND SYMBOLS (WHITE)		TEMP DITCH FLOW
⑪	TEMPORARY PAVEMENT MARKING - LINE 4" (WHITE)		



MATCH LINE STA. 183+00

MATCH LINE STA. 198+00  
SEE SHEET NO. 52



**METRA-MILWAUKEE DISTRICT NORTH**

- TEMPORARY BARRIER WALL TO BE PLACED IN LIEU OF TYPE II BARRICADES WHERE ALL OF THE FOLLOWING CONDITIONS OCCUR, OR DIRECTED BY THE ENGINEER,
  - SIDESLOPE STEEPER THAN 4:1, OR DROPOFF > 2', TO PROPOSED SUBGRADE/BOTTOM OF UNDERCUT.
  - EDGE OF TRAVEL LANE CLOSER THAN 4 FEET TO TOP OF SIDESLOPE OR DROPOFF.
- ALL TEMPORARY BARRIER WALL END TREATMENTS WILL HAVE ATTENUATING DEVICES AS SHOWN OR AS DIRECTED BY THE ENGINEER.

REVISIONS	
NAME	DATE

ILLINOIS DEPARTMENT OF TRANSPORTATION  
**FAU 2647 - BUTTERFIELD ROAD**  
**SUGGESTED STAGES OF CONSTRUCTION**  
**AND TRAFFIC CONTROL - STAGE II**  
**STA. 168+00 TO STA. 198+00**

SCALE: 1:50  
 DATE: 12/2/2005

DRAWN BY: PMM  
 CHECKED BY: BLL