

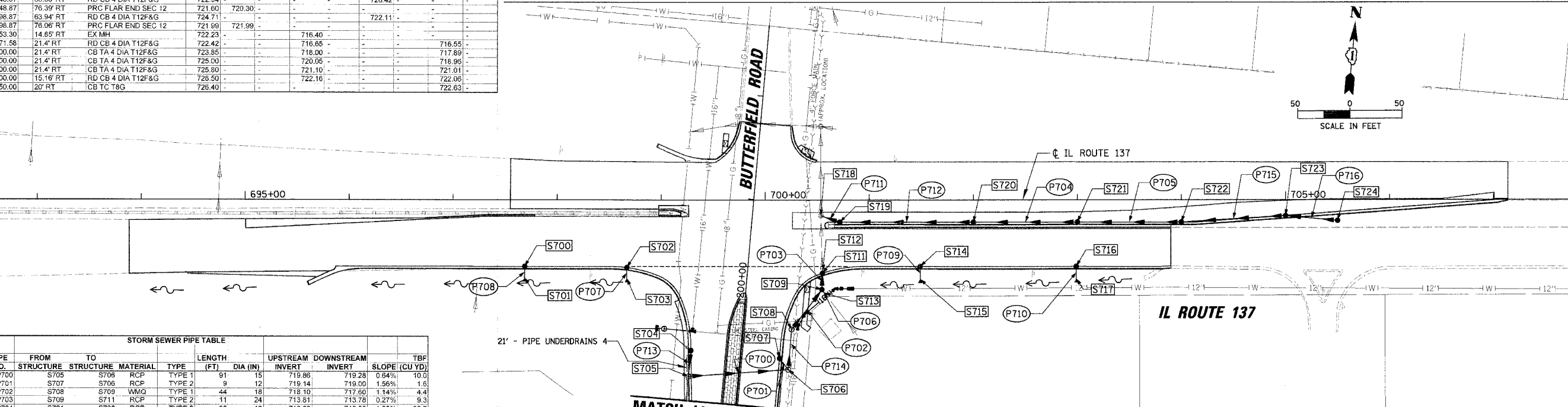
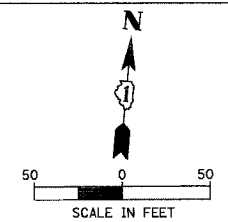
STR NO.	STATION	OFFSET	STRUCTURE TYPE	RIM	N INV	NE INV	E INV	SE INV	S INV	SW INV	W INV	NW INV
S700	697+66.62	63.87 RT	CB TC 4 DIA T24F&G	717.66	-	-	-	-	715.67	-	-	-
S701	697+68.50	75.89 RT	PRC FLAR END SEC 12	715.70	715.57	-	-	-	-	-	-	-
S702	698+66.77	64.89 RT	RD CB 4 DIA T12F&G	719.02	-	-	-	-	716.00	-	-	-
S703	698+66.77	75.69 RT	PRC FLAR END SEC 12	717.44	715.88	-	-	-	-	-	-	-
S704	199+50.00	47.54 LT	RD CB 4 DIA T24F&G	723.19	-	-	-	-	720.11	-	-	-
S705	199+25.00	47.69 LT	RD MAN 5 DIA T1F CL	723.19	719.86	-	719.86	-	720.10	-	-	-
S706	199+40.00	47.37 RT	RD MAN 5 DIA T1F CL	723.40	719.00	-	719.28	-	-	-	-	719.00
S707	199+50.00	38 RT	CB TA 4 DIA T24F&G	723.38	-	-	719.14	-	-	-	-	-
S708	199+78.12	47.12 RT	RD MAN 5 DIA T1F CL	722.50	-	718.10	-	-	718.10	-	-	-
S709	200+19.64	72.72 RT	RD CB 5 DIA T8G	721.00	713.81	-	715.99	-	-	717.60	-	-
S710	NOT USED	-	-	-	-	-	-	-	-	-	-	-
S711	200+35.29	71.91 RT	RD CB 4 DIA T24F&G	721.64	-	-	-	-	713.78	-	-	-
S712	200+40.70	70.15 RT	EX PIPE END	713.70	-	-	-	-	-	-	-	-
S713	199+78.55	110.59 RT	EX FES	719.80	-	-	-	-	-	-	-	716.52
S714	701+48.87	63.89 RT	RD CB 4 DIA T12F&G	722.94	-	-	-	-	720.42	-	-	-
S715	701+48.87	76.39 RT	PRC FLAR END SEC 12	721.60	720.30	-	-	-	-	-	-	-
S716	702+86.87	63.94 RT	RD CB 4 DIA T12F&G	724.71	-	-	-	-	722.11	-	-	-
S717	702+86.87	76.06 RT	PRC FLAR END SEC 12	721.99	721.99	-	-	-	-	-	-	-
S718	700+53.30	14.89 RT	EX MH	722.23	-	716.40	-	-	-	-	-	-
S719	700+71.58	21.4 RT	RD CB 4 DIA T12F&G	722.42	-	716.55	-	-	-	-	716.55	-
S720	702+00.00	21.4 RT	CB TA 4 DIA T12F&G	723.85	-	718.00	-	-	-	-	717.89	-
S721	703+00.00	21.4 RT	CB TA 4 DIA T12F&G	725.00	-	720.05	-	-	-	-	718.96	-
S722	704+00.00	21.4 RT	CB TA 4 DIA T12F&G	725.80	-	721.10	-	-	-	-	721.01	-
S723	705+00.00	15.16 RT	RD CB 4 DIA T12F&G	726.50	-	722.16	-	-	-	-	722.06	-
S724	705+50.00	20 RT	CB TC T8G	726.40	-	-	-	-	-	-	722.63	-

MATCH LINE STA. 199 + 00  
SEE SHEET NO. 64

EXISTING CONDITIONS

- LEGEND
- [R] REMOVAL
  - [RI] REMOVAL, BY OTHERS
  - [A] ADJUST
  - [AI] ADJUST, BY OTHERS
  - [AB] ABANDON

NOTE: SEE SHEETS 75 TO 76 FOR DETAILS OF PROPOSED WATER MAIN AND APURTANENCES.



MATCH LINE STA. 199 + 00  
SEE SHEET NO. 64

PROPOSED CONDITIONS

PIPE NO.	FROM STRUCTURE	TO STRUCTURE	MATERIAL	TYPE	LENGTH (FT)	DIA (IN)	UPSTREAM INVERT	DOWNSTREAM INVERT	SLOPE (CU YD)	TBF
P700	S705	S706	RCP	TYPE 1	91	15	719.86	719.28	0.64%	10.0
P701	S707	S706	RCP	TYPE 2	9	12	719.14	719.00	1.56%	1.6
P702	S708	S709	VMQ	TYPE 1	44	18	718.10	717.99	1.14%	4.4
P703	S709	S711	RCP	TYPE 2	11	24	713.81	713.78	0.27%	9.3
P704	S721	S720	RCP	TYPE 2	96	12	718.98	718.00	1.00%	32.7
P705	S722	S721	RCP	TYPE 2	96	12	721.01	720.05	1.00%	21.6
P706	S713	S709	VMQ	TYPE 1	7	15	716.52	715.99	7.57%	0.0
P707	S702	S703	RCP	TYPE 1	3	12	716.00	715.88	4.00%	0.0
P708	S700	S701	RCP	TYPE 1	3	12	715.67	715.57	3.33%	0.0
P709	S714	S715	RCP	TYPE 1	4	12	720.42	720.30	3.00%	0.0
P710	S716	S717	RCP	TYPE 1	4	12	721.11	721.09	3.00%	0.0
P711	S719	S718	RCP	TYPE 2	15	12	716.55	716.40	1.00%	5.0
P712	S720	S719	RCP	TYPE 2	124	12	717.89	716.65	1.00%	41.0
P713	S704	S705	RCP	TYPE 1	21	12	720.11	719.86	1.19%	2.0
P714	S706	S708	VMQ	TYPE 1	33	18	718.00	718.10	2.73%	5.1
P715	S723	S722	RCP	TYPE 2	96	12	722.06	721.10	1.00%	18.6
P716	S724	S723	RCP	TYPE 1	47	12	722.63	722.16	1.00%	6.7

NAME	DATE

ILLINOIS DEPARTMENT OF TRANSPORTATION  
**FAU 2647 - BUTTERFIELD ROAD  
 UTILITY AND DRAINAGE PLAN  
 BUTTERFIELD ROAD  
 AND ILLINOIS ROUTE 137**

SCALE: 1"=50'  
 DATE: 12/2/2005

DRAWN BY: ELA  
 CHECKED BY: BLL