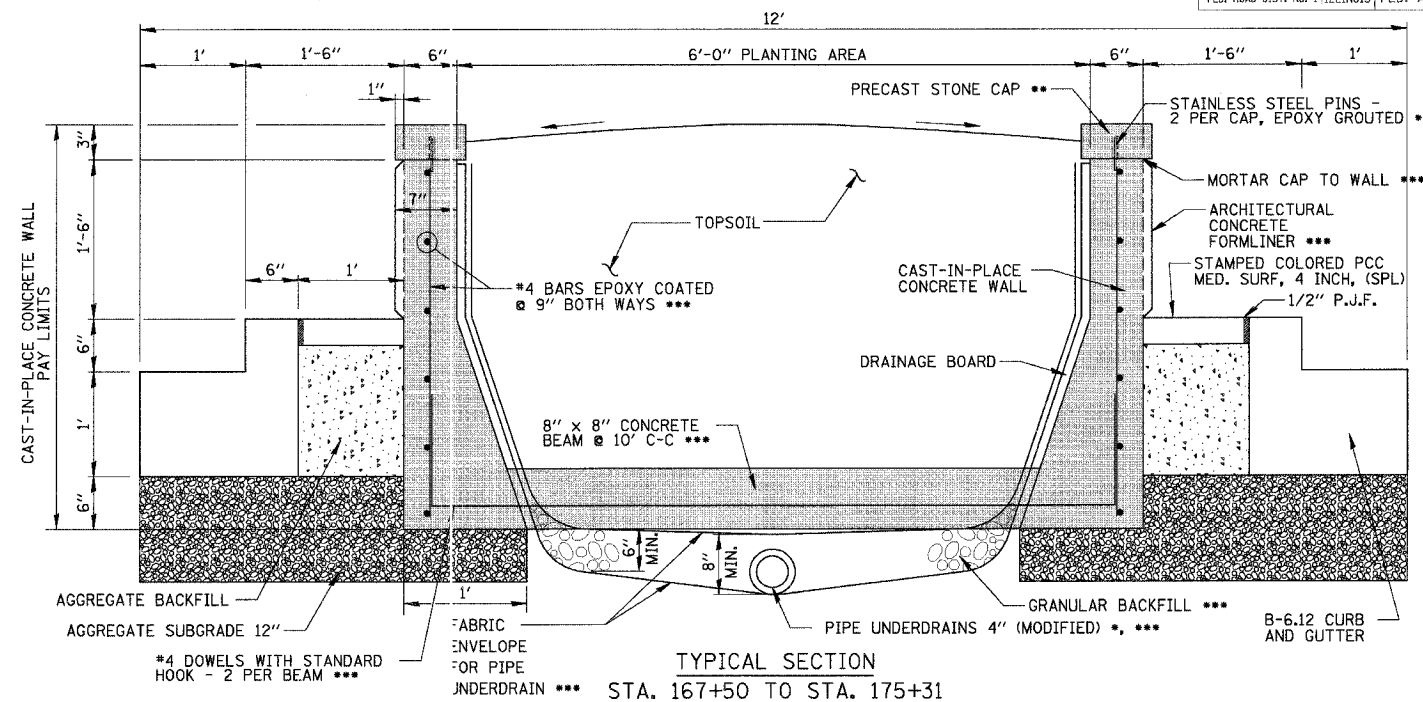
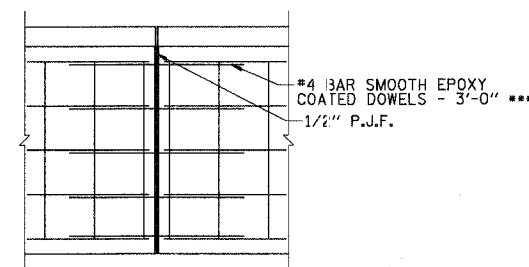


MEDIAN SIGN AT STATION STA. 167+50 AND STA. 175+31



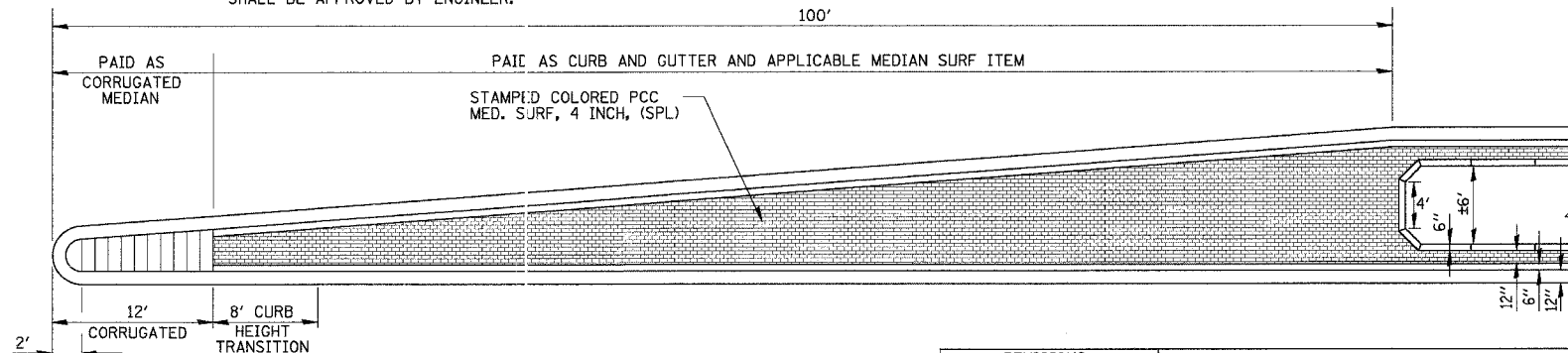
TYPICAL SECTION  
STA. 167+50 TO STA. 175+31

- TIE PIPE UNDERDRAINS 4" (MODIFIED) INTO STORM SEWER LATERALS (INCIDENTAL TO PIPE UNDERDRAINS 4" (MODIFIED))
- PRECAST STONE CAP MAY BE FORMED AND POURED MONOLITHICALLY WITH WALL. REINFORCEMENT MUST BE EXTENDED INTO CAP.
- INCLUDED IN UNIT PRICE FOR CAST-IN-PLACE CONCRETE WALL



CONSTRUCTION JOINT DETAIL

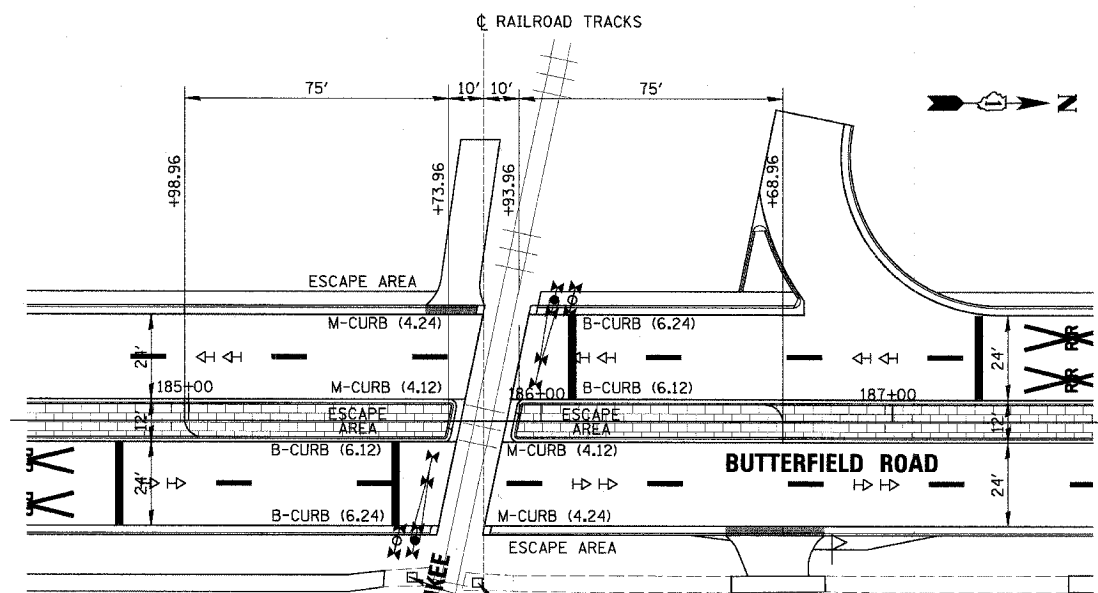
NOTE: CONSTRUCTION JOINTS @ ± 60' CEN'TERS. ADJUSTMENTS TO SPACING/LOCATION SHALL BE APPROVED BY ENGINEER.



END TREATMENTS

REVISIONS	
NAME	DATE

ILLINOIS DEPARTMENT OF TRANSPORTATION  
**FAU 2647 - BUTTERFIELD ROAD  
 MEDIAN, LANDSCAPING  
 PLANTER DETAILS AND  
 MEDIAN TREATMENTS AT RR**  
 SCALE: NONE  
 DATE: 12/2/2005  
 DRAWN BY: PMM  
 CHECKED BY: BLL



MEDIAN AND CURB TREATMENTS  
AT HIGHWAY-RAIL INTERSECTIONS