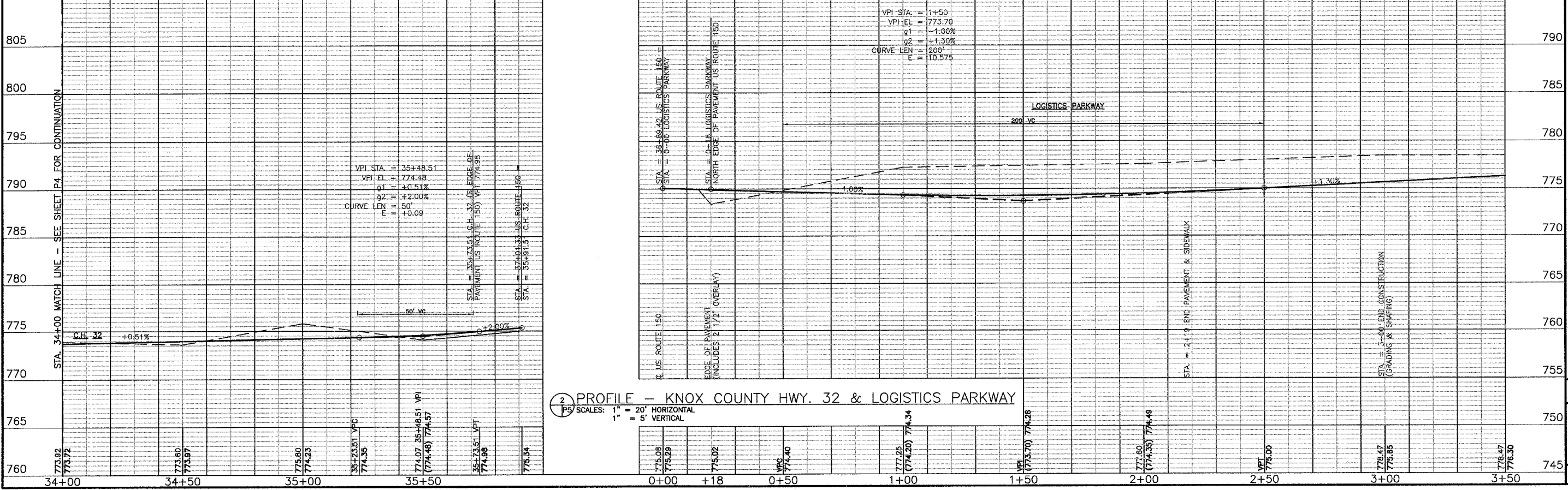


34+00 RT. (C.H.32) COMBINATION CONCRETE CURB & GUTTER TYPE B6.24 - 92 FT.  
 34+90 - 35+20 LT. (C.H.32) COMBINATION CONCRETE CURB & GUTTER TYPE B6.24 - 30 FT.  
 34+18 RT. (C.H. 32) PORTLAND CEMENT CONCRETE DRIVEWAY PAVEMENT (6") - 69.0 S.Y.  
 34+40 RT. (C.H.32) PIPE CULVERT REMOVAL - 32 FT.  
 32+50 - 35+73 (C.H.32) PAVEMENT REMOVAL - 1347 S.Y.  
 34+22 & 34+52 RT. (C.H.32) CONCRETE HEADWALL REMOVAL - 2 EACH  
 32+50 - 35+45 (C.H.32) RAISED REFLECTIVE PAVEMENT MARKERS - SEE SHEET PM2 FOR DETAILS  
 34+40 RT. (C.H.32) TRENCH BACKFILL - 16.5 C.Y.  
 38+00-38+64 RT. US (150) PAVEMENT REMOVAL - 134 S.Y.

0+86 - 2+19 LT. (LOGISTICS) COMBINATION CONCRETE CURB & GUTTER TYPE B6.24 - 132 FT.  
 1+36 - 2+19 RT. (LOGISTICS) COMBINATION CONCRETE CURB & GUTTER TYPE B6.24 - 84 FT.  
 1+36 RT. & LT. (LOGISTICS) INLET TYPE A W/ TYPE 3V FRAME & GRATE - 2 EACH.  
 1+36 (LOGISTICS) STORM SEWER, CLASS A, TYPE 1, 15" - 50 FT.  
 1+36 RT. (LOGISTICS) STORM SEWER, CLASS A, TYPE 1, 15" - 5 FT.  
 0+38 - 1+36 RT. (LOGISTICS) STORM SEWER, CLASS A, TYPE 1, 15" - 110 FT.  
 0+38 RT. (LOGISTICS) PRECAST CONCRETE FLARED END SECTION 15" - 1 EACH.  
 1+07 - 1+36 LT. (LOGISTICS) STORM SEWER, CLASS A, TYPE 1, 15" - 40 FT.  
 1+36 (LOGISTICS) TRENCH BACKFILL - 12 C.Y.  
 0+18 - 2+19 (LOGISTICS) PAINT PAVEMENT MARKING - SEE SHEET PM1 FOR DETAILS.  
 1+12 LT. (LOGISTICS) PRECAST CONCRETE FLARED END SECTION 15" - 1 EACH.  
 1+36 RT. (LOGISTICS) MANHOLE, TYPE A, 4' DIAMETER W/TYPE 1 FRAME & CLOSED LID.

1 PLAN - KNOX COUNTY HWY. 32 & LOGISTICS PARKWAY  
 SCALE: 1" = 20'

VPI STA: = 1+50  
 VPI EL: = 773.70  
 g1 = -1.00%  
 g2 = +1.30%  
 CURVE LEN = 200'  
 E = 10.575



BRUNER, COOPER & ZUCK, INC.  
 Consulting Engineers  
 Structural Engineers  
 Land Surveyors  
 188 East Simmons Street  
 Peoria, IL 61603  
 Phone: (309) 345-5202  
 Fax: (309) 345-5202  
 E-Mail: brcooper@brcooper.com

REVISIONS  
 04/03/2006 JWH  
 DRAWN: JWH  
 CHECKED: KIC  
 APPROVED: KIC  
 APPROVED: KIC  
 FILE NAME: 240215/P5

PLAN & PROFILE - KNOX COUNTY HWY. 32 & LOGISTICS PARKWAY  
 PLANS FOR PROPOSED  
 INTERSECTION CONSTRUCTION  
 US ROUTE 150, LOGISTICS PARKWAY & KNOX COUNTY HWY. 32  
 GALESBURG, ILLINOIS

JOB NO.  
 240215  
 SHEET NO. //  
**P5**  
 02/22/2005