

T.R.	SECTION	COUNTY	TOTAL SHEETS	SHEET NO.	323 W. 3RD ST. P.O. BOX 180 MT. CARMEL, IL 62863 PHONE: (618)-262-8651 FAX: (618)-263-3327
128	03-01128-00-BR	EDWARDS	15	5	
FED. ROAD DIST. NO. 9 ILLINOIS		FED. AID PROJECT			
PROJECT # BROS-047(23)		CONTRACT # 95478			
JOB # C-97-129-06		WALSER CREEK			

GENERAL NOTES

- The Contractor shall drive 2 test pile, as specified, in permanent locations as directed by the Engineer before ordering the remaining piles.
- See Special Provisions for boring logs.
- A Corrosion Inhibitor, as covered in the Special Provisions, shall be used in the concrete for Precast Prestressed Concrete Deck Beams.
- The Bit. Conc. Surf. Cse., Superpave and the waterproofing membrane system shown in these plans shall not be provided.
- 4-3/4" shear studs will be required per pile which will be encased within the concrete cap.
- The HP piles shall be oriented with the strong axis bending in the longitudinal direction

Item	Super	Sub.		Total
		Piers	Abuts.	
Removal of Existing Structures	Each			1
Bit. Conc. Surf. Cse. Superpave	Yd			
Waterproofing Membrane System	Cu.Yd.			
Concrete Structures	Cu.Yd.	14.8	16.6	31.4
P.P. Conc. Dk. Bm. 17" Dp.	Sq.Ft.	2400		2400
Steel Railing, Type S1	Foot	200		200
Reinforcement Bars	Pound	1860	2220	4080
Furnishing Steel Piles HP12X53	Foot	763	763	1526
Driving Steel Piles	Foot	763	763	1526
Test Pile Steel HP12X53	Each	1	1	2
Name Plates	Each		1	1
Concrete Encasement	Cu.Yd.	12.1	2.7	14.8
Stud Shear Connectors	Each	32	32	64

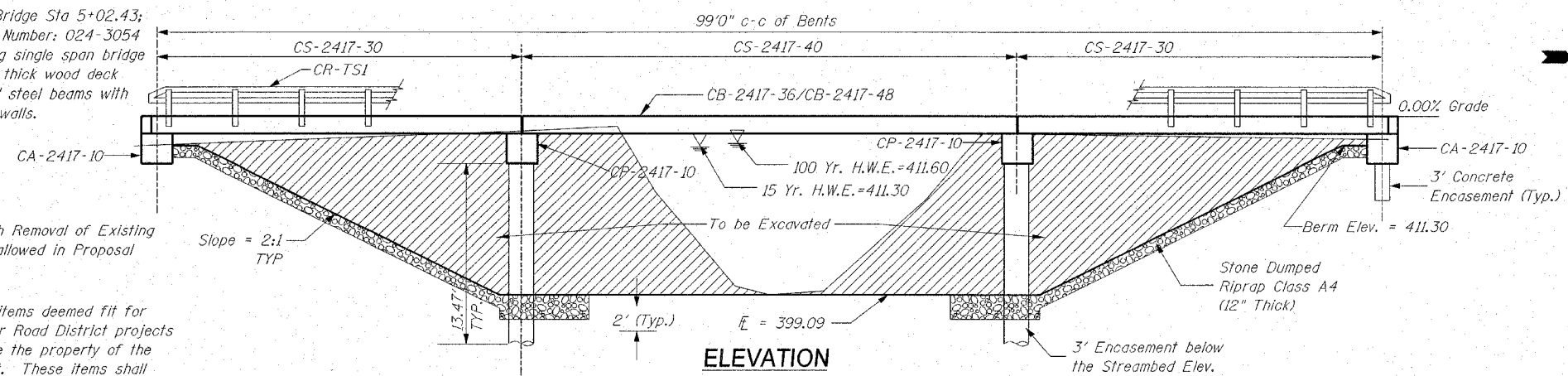
NOTE: Four (4) Each Curled End Sections required. Item to be incidental to the Steel Railing.

INDEX OF SHEETS

- General Plan & Elevation
- Standard CS-2417-30
- Standard CS-2417-40
- Standard CB-2417-36
- Standard CB-2417-48
- Standard CA-2417-10
- Standard CP-2417-10
- Standard CR-TS1
- Standard CN
- Standard CX-1

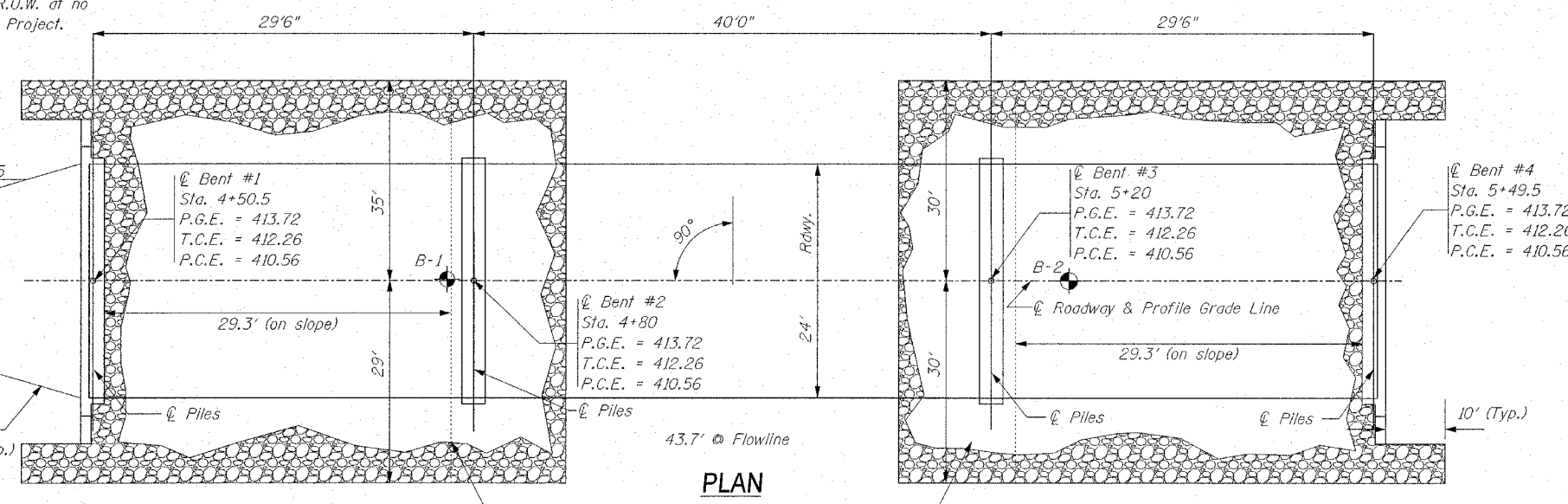
B.M. - I.P. +0+26.60, 0.67' LT = 410.66

Existing Bridge Sta 5+02.43;
Structure Number: 024-3054
A 30' long single span bridge
with a 2" thick wood deck
on 9 - 9" steel beams with
steel wingwalls.



One (1) Each Removal of Existing Structures allowed in Proposal

NOTE: All items deemed fit for use on other Road District projects shall become the property of the said District. These items shall be stored along the R.O.W. at no additional cost to the Project.



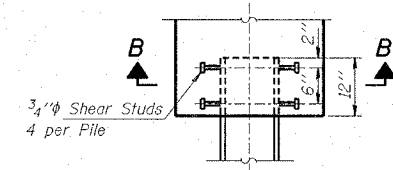
Limits of Aggregate Surface Cse. Ty. B (Typ.)

NOTE: The Article or Section Numbers Referencing the Standard Specifications for Road and Bridge Construction as shown on the Standard Bridge Plan Sheets included with the contract plans should be interpreted as referring to the current edition of the Standard Specification (Adopted January 1, 2002) as shown in the "Article/Section No. Reference Table."

Previous No.	Current No.
504.06	504.06
505.04	505.04
706.05	1006.05
706.32	1006.32
760.07	1060.07
STD 2340	STD 631026

PILE DATA (2-PIERS)

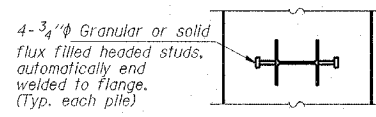
Type: Steel Piles HP12X53
Capacity: Drive to Refusal
Estimated Length: 109 Feet/Pile
Number Required: 8 (Includes 1 Test Pile in Bent #2)



PILE DETAIL
Typ. Each Pile

PILE DATA (2-ABUTS)

Type: Steel Piles HP12X53
Capacity: Drive to Refusal
Estimated Length: 109 Feet/Pile
Number Required: 8 (Includes 1 Test Pile in Bent #4)

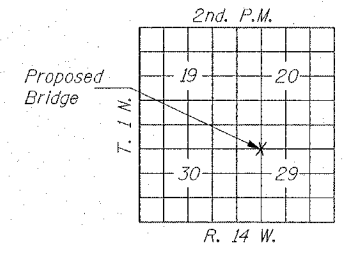


SECTION B-B

STATION 5+00
WALSER CREEK
SEC. 03-01128-00-BR BUILT 20
PROJECT BROS-047(23)
EDWARDS COUNTY
LOADING HS 20-44
STR. NO. 024-3133

LETTERING FOR NAME PLATE

Locate Name Plate at the Southeast corner of the Bridge (See Std. CN)



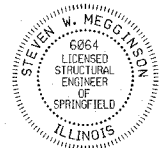
LOCATION SKETCH

WATERWAY INFORMATION

Drainage Area = 9.2 sq.mi. Low Grade Elev. = 410.46 at Sta. 2+00

Flood	Freq. Yr.	Q C.F.S.	Opening Sq Ft		Natural H.W.E.	Head-Ft		Headwater EL.	
			Exist.	Prop.		Exist.	Prop.	Exist.	Prop.
Design	15	2071	214	831	411.30	1.08	0.09	412.38	411.39
Base	100	3345	222	860	411.60	5.75	0.42	417.35	412.02
Overtopping									
Max. Calc.	500	4401							

SEISMIC DATA
Seismic Performance Category (SPC) = B
Bedrock Acceleration Coefficient (A) = 0.093g
Site Coefficient (S) = 1.5



Steven Mefford
ILLINOIS STRUCTURAL NO. 6064
Complies with 2002 AASHTO Specifications for Seismic Design of Bridges.

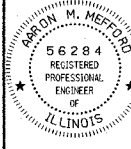
Expires 11-30-06

DESIGN SPECIFICATIONS

2002 AASHTO
HS 20-44 Loading, Load Factor Design.



PROFESSIONAL LAND SURVEYING FIRM:
048-00082
PROFESSIONAL ENGINEERING CORPORATION:
184-00087



AARON M. MEFFORD
NAME
SIGNATURE
5-10-06
DATE
11-30-07
EXPIRES

ROAD DISTRICT NO. 1
TOWNSHIP ROUTE 128
EDWARDS COUNTY, ILLINOIS

SHEET TITLE:
GENERAL PLAN AND ELEVATION

SCALE: NONE
BY: AMM
DATE: 03/10/06
REV:

5 OF 15 SHEETS
SHEET NO. 5

GENERAL PLAN AND ELEVATION

TOWNSHIP ROUTE 128
OVER WALSER CREEK
SECTION 03-01128-00-BR
EDWARDS COUNTY
STATION 5+00