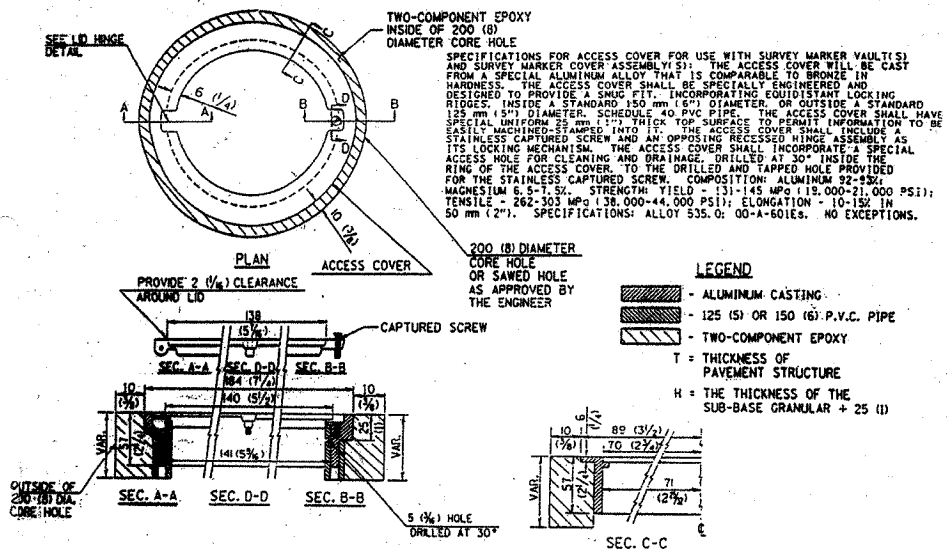


**DETAIL OF SURVEY MARKER VAULT**

FOR RESET LAND SURVEY MONUMENTS IN RIGID AND COMPOSITE PAVEMENTS



**GENERAL NOTES**

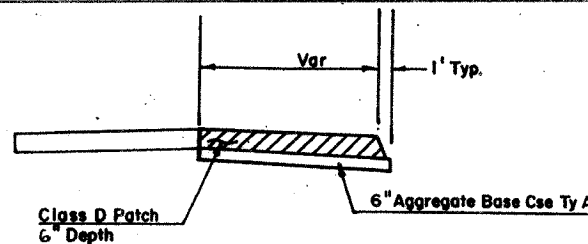
- ALUMINUM CASTING SHALL BE EITHER PLACED OVER A 125 mm (5") P.V.C. PIPE OR INSIDE OF A 150 mm (6") P.V.C. PIPE.
- BACKFILL WITH FINE AGGREGATE-FA-01/02.
- WORK SHALL NOT START ON THIS ITEM UNTIL THE FINAL LIFT OF CLASS 1 HAS BEEN COMPLETED.
- SEE SPECIAL PROVISION "PRESERVATION OF LAND SURVEY MONUMENTS"
- THIS WORK WILL BE PAID FOR AT THE CONTRACT UNIT PRICE EACH FOR SURVEY MARKER VAULT WHICH PRICE SHALL INCLUDE ALL LABOR AND MATERIAL AS SPECIFIED INCLUDING CORING, EPOXY AND FA-01/02 AGGREGATE AND NO ADDITIONAL COMPENSATION WILL BE ALLOWED.
- THE CASTING SHALL BE ANCHORED IN THE 200 mm (8") DIAMETER CORE HOLE WITH TWO-COMPONENT EPOXY CONFORMING TO APPLICABLE PORTIONS OF ARTICLE 1025.01(1725.00) OF THE STANDARD SPECIFICATIONS.
- ALL SURVEY MARKER (VAULTS) SHALL BE PLACED 6 mm (1/4") ± BELOW THE FINAL SURFACE.
- THE 200 mm (8") DIAMETER CORE HOLE SHALL BE SUBJECT TO THE APPROVAL OF THE ENGINEER.

**BILL OF MATERIAL**

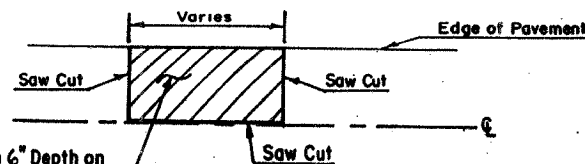
ALUMINUM CASTING OF THE DIMENSIONS AND SPECIFICATIONS SHOWN OR OTHER SUBJECT TO ENGINEER'S APPROVAL OF SHOP DRAWINGS.
125 mm OR 150 mm (5" OR 6") P.V.C. PIPE, SCHEDULE 40, ALUMINUM TABLET, STAMPED IN ACCORDANCE WITH STANDARD 235.
15 X 1.2 m (5' X 48") RE-BAR, EPOXY AND FA-01/02 AGGREGATE.

**SURVEY MONUMENTS**

LOCATION	STATION	OFFSET	QUANTITY
N. W. CORNER SEC. 14 T10N, R6E, 3 <sup>rd</sup> P.M.	171+84.98	0.53' RT.	1.0 EACH
N. E. CORNER SEC. 14 T10N, R6E, 3 <sup>rd</sup> P.M.	224+87.40	0.10' LT.	1.0 EACH
N. E. CORNER SEC. 13 T10N, R6E, 3 <sup>rd</sup> P.M.	277+67.91	0.67' RT.	1.0 EACH
		<b>TOTAL</b>	<b>3.0 EACH</b>



**TYPICAL CROSS SECTION**



**CLASS D PATCH DETAILS**

**CLASS D PATCH TYPE II 6"**

STA TO STA	OFFSET	QUANTITY	PATCH #
STA 170+60 TO STA 170+70	C.L. TO 11' LT.	12 SQ YD	#4
STA 208+60 TO STA 208+70	C.L. TO 11' LT.	12 SQ YD	#7
STA 208+60 TO STA 208+70	C.L. TO 11' RT.	12 SQ YD	#8
	<b>TOTAL</b>	<b>36 SQ YD</b>	

**CLASS D PATCH TYPE III 6"**

STA TO STA	OFFSET	QUANTITY	PATCH #
STA 170+58 TO STA 170+72	C.L. TO 11' RT.	17 SQ YD	#5
	<b>TOTAL</b>	<b>17 SQ YD</b>	

**CLASS D PATCH TYPE IV 6"**

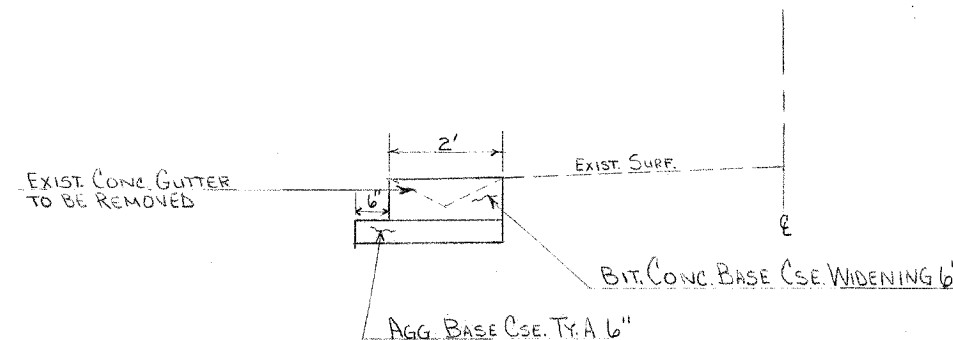
STA TO STA	OFFSET	QUANTITY	PATCH #
STA 150+90 TO STA 151+65	RIGHT 4' TO 11'	58 SQ YD	#1
STA 168+56 TO STA 168+84	C.L. TO 11' LT.	34 SQ YD	#2
STA 168+56 TO STA 168+84	C.L. TO 11' RT.	34 SQ YD	#3
STA 171+00 TO STA 177+00	4' LT. TO 11' LT.	467 SQ YD	#6
STA 215+75 TO STA 216+25	5' RT. TO 11' RT.	33 SQ YD	#9
	<b>TOTAL</b>	<b>626 SQ YD</b>	

**SAW CUTS (FOR CLASS D PATCHING)**

STA TO STA	OFFSET	QUANTITY	PATCH #
STA 150+90 TO STA 151+65	RIGHT 4' TO 11'	89 FOOT	#1
STA 168+56 TO STA 168+84	C.L. TO 11' LT.	50 FOOT	#2
STA 168+56 TO STA 168+84	C.L. TO 11' RT.	50 FOOT	#3
STA 170+60 TO STA 170+70	C.L. TO 11' LT.	32 FOOT	#4
STA 170+58 TO STA 170+72	C.L. TO 11' RT.	36 FOOT	#5
STA 171+00 TO STA 177+00	4' LT. TO 11' LT.	614 FOOT	#6
STA 208+60 TO STA 208+70	C.L. TO 11' LT.	32 FOOT	#7
STA 208+60 TO STA 208+70	C.L. TO 11' RT.	32 FOOT	#8
STA 215+75 TO STA 216+25	5' RT. TO 11' RT.	62 FOOT	#9
	<b>TOTAL</b>	<b>997 FOOT</b>	

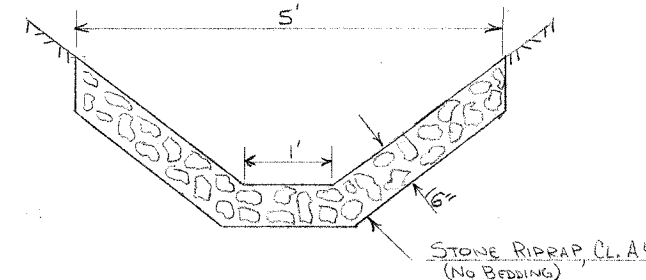
**AGGREGATE BASE COURSE TYPE A**

STA TO STA	OFFSET	QUANTITY	LOCATION
STA 150+90 TO STA 151+65	RIGHT 4' TO 11'	21 TON	PATCH #1
STA 168+56 TO STA 168+84	C.L. TO 11' LT.	12 TON	PATCH #2
STA 168+56 TO STA 168+84	C.L. TO 11' RT.	12 TON	PATCH #3
STA 170+60 TO STA 170+70	C.L. TO 11' LT.	5 TON	PATCH #4
STA 170+58 TO STA 170+72	C.L. TO 11' RT.	6 TON	PATCH #5
STA 171+00 TO STA 177+00	4' LT. TO 11' LT.	164 TON	PATCH #6
STA 208+60 TO STA 208+70	C.L. TO 11' LT.	5 TON	PATCH #7
STA 208+60 TO STA 208+70	C.L. TO 11' RT.	5 TON	PATCH #8
STA 215+75 TO STA 216+25	5' RT. TO 11' RT.	12 TON	PATCH #9
STA 202+56 TO STA 208+94	LEFT	105 TON	GUTTER
	<b>TOTAL</b>	<b>347 TON</b>	



**PROPOSED BASE COURSE WIDENING**

LT. STA. 202+58 TO STA 210+85



**PROPOSED STONE RIPRAP DITCH**

STA TO STA	O/S	QUANTITY
STA 202+72 TO STA 207+60	RT.	183.0 TON
STA 208+94 TO STA 211+51	RT.	99.0 TON
	<b>TOTAL</b>	<b>282.0 TON</b>

**PATCHING, MONUMENTS, WIDENING & RIPRAP**

SCALE: N/A	APPROVED BY:	DRAWN BY:
DATE:		REVISED:
		DRAWING NUMBER: