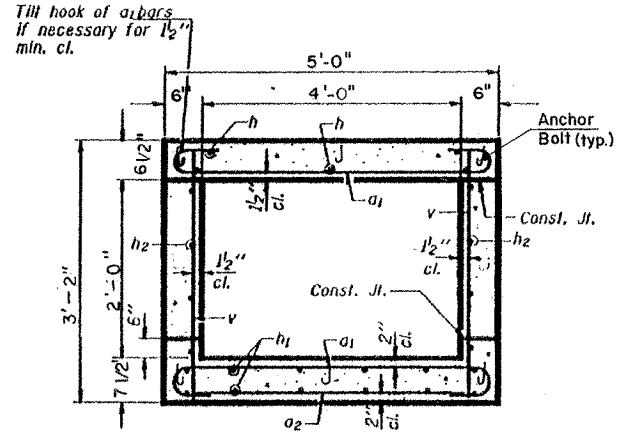
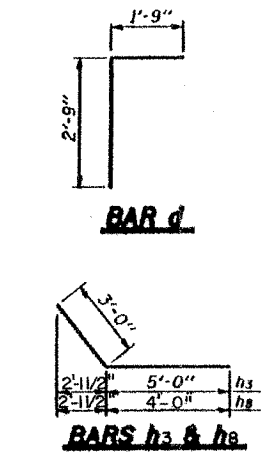
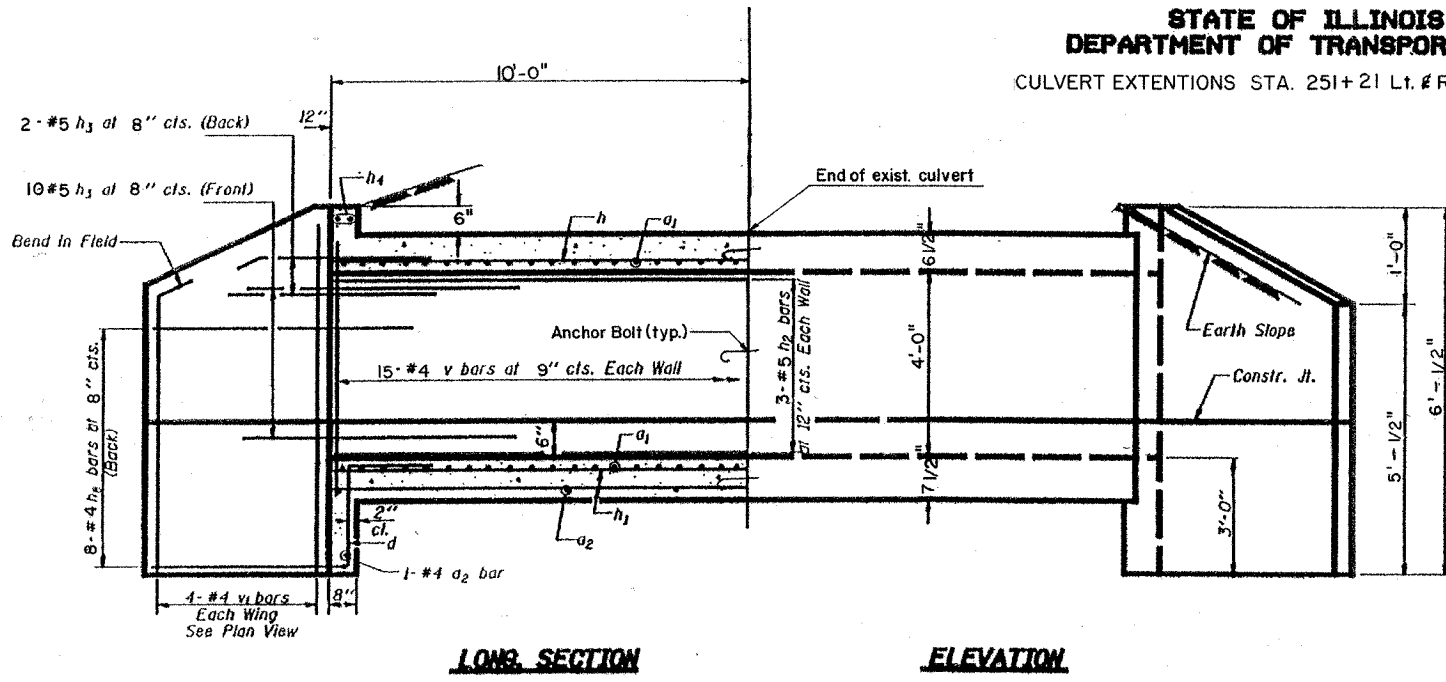


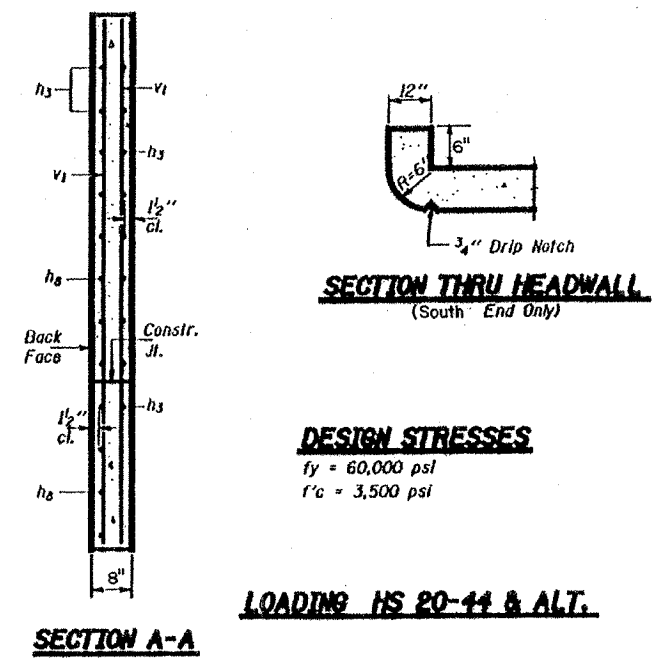
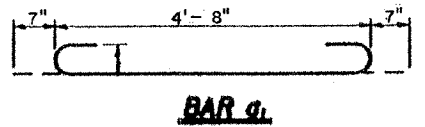
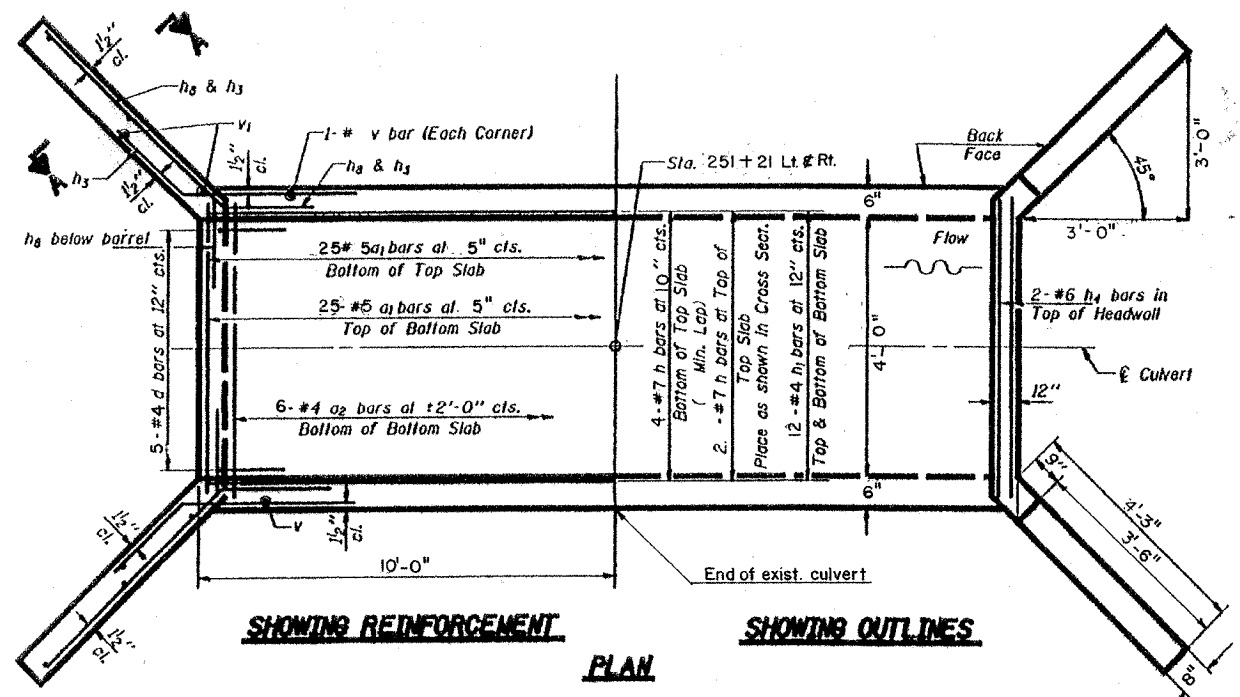
STATE OF ILLINOIS
DEPARTMENT OF TRANSPORTATION
CULVERT EXTENSIONS STA. 251+21 Lt. & Rt.

ROUTE NO.	SECTION	COUNTY	TOWN	TWP.	SHEET NO. 13 of 59 SHEETS
1-1656	*	SHELBY			
FILE NO. (BY DATE)	ALPHA	FEED. NO. PROJECT			
					* 05-00260-00-RS CONTRACT NO. 95488

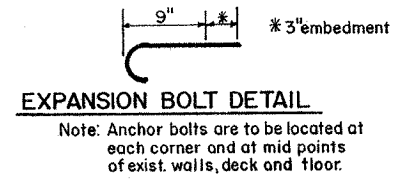


SECTION THRU BARREL
QUANTITIES FOR 1 EXTENSION

Bar	No.	Size	Length	Shape	
a1	50	#5	5'-10"	C	
a2	7	#4	4'-8"	—	
d	5	#4	4'-6"	L	
h	6	#7	9'-8"	—	
h1	12	#4	9'-8"	—	
h2	6	#5	9'-8"	—	
h3	24	#5	8'-0"	—	
h4	2	#6	4'-9"	—	
h5	16	#4	7'-0"	—	
y	32	#4	2'-10"	—	
y1	8	#4	5'-8"	—	
Concrete Box Culverts				Cu. Yd.	4.4
Reinforcement Bars				Pound	980
Expansion Bolts, 3/4" dia				Each	6



DESIGN STRESSES
fy = 60,000 psi
f'c = 3,500 psi



NOTES
A distance of half the length of the wingwall but not less than six feet of the barrel shall be poured monolithically with the wingwalls.

DESIGNED	19
CHECKED	EXAMINED
DRAWN	DESIGNER OF BRIDGE DESIGN
CHECKED	INCHES & DIMENSIONS AND STRUCTURE

SSB-H-0 4-30-98

LOADING HS 20-44 & ALT.