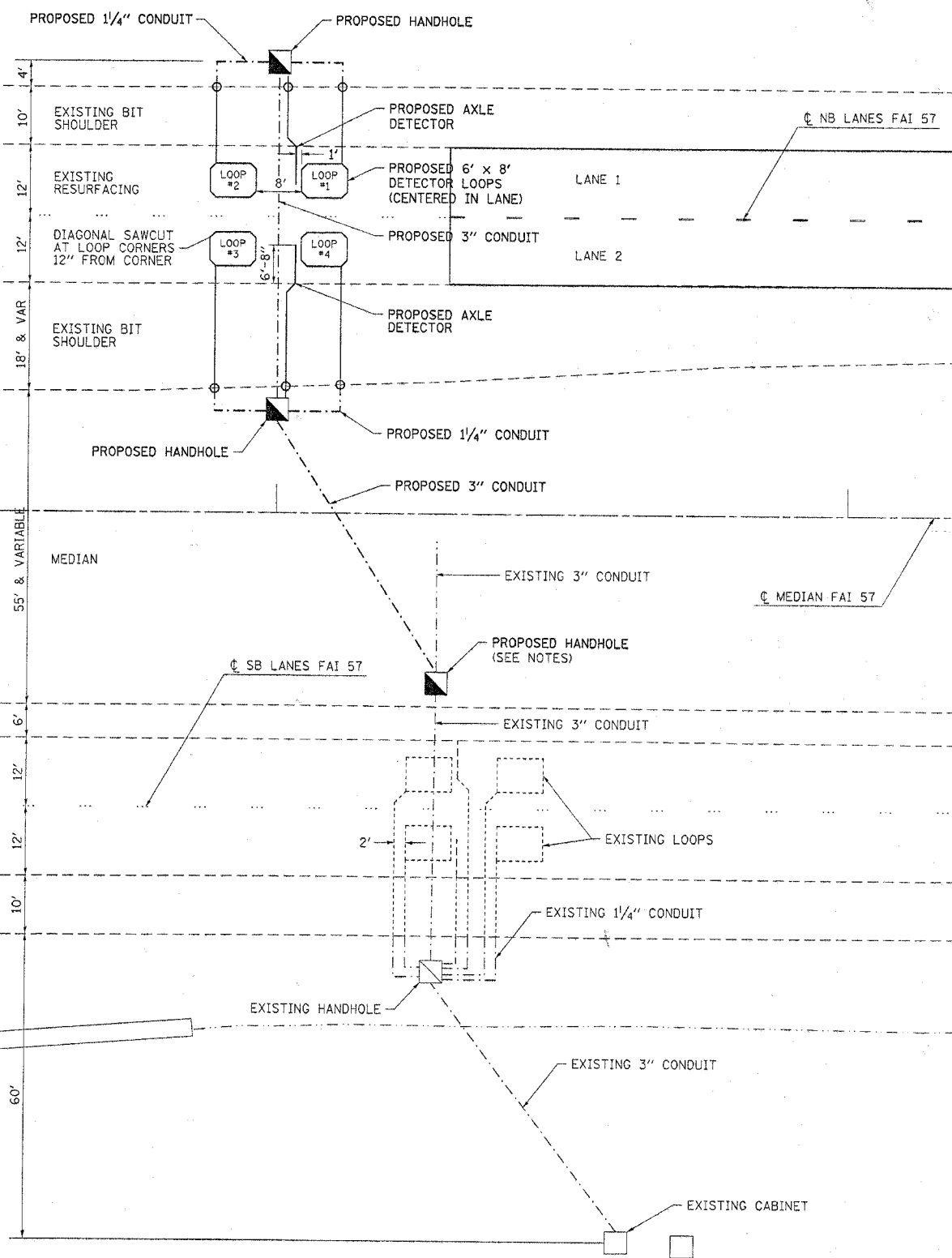


F.A.I. RTE.	SECTION	COUNTY	TOTAL SHEETS	SHEET NO.
57	*	WILLIAMSON	55	55
STA. _____		TO STA. _____		
FED. ROAD DIST. NO. _____		ILLINOIS FED. AID PROJECT		
* [X1-(4,4-1,5,6,6-2)] R-1				

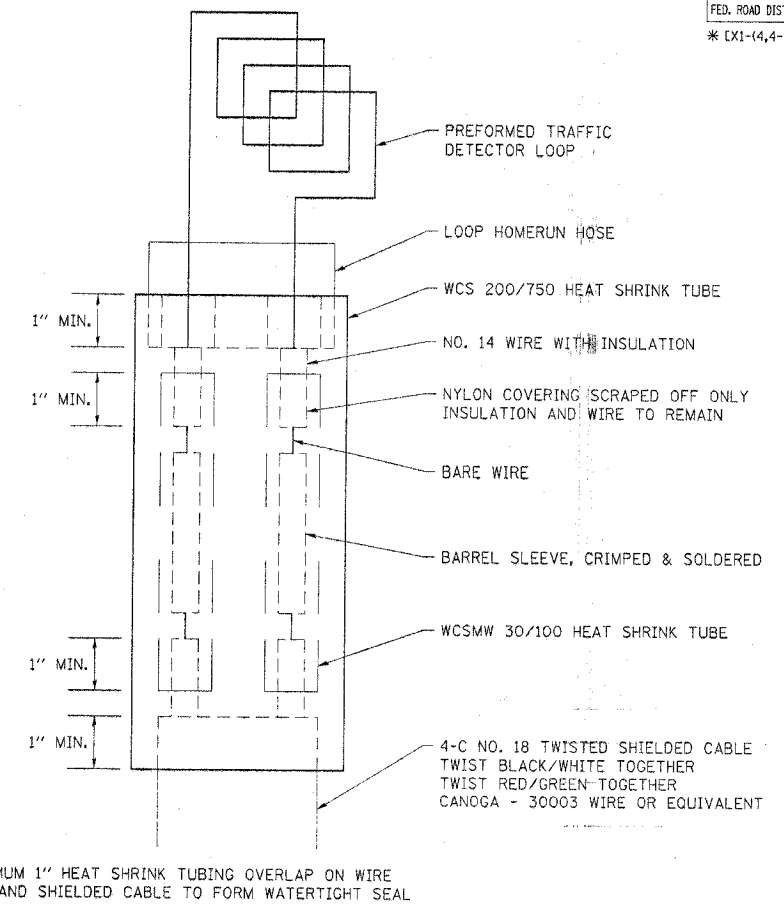
DETECTOR LOOP DETAIL

FAI 57 NB LANES
STATION 192+00



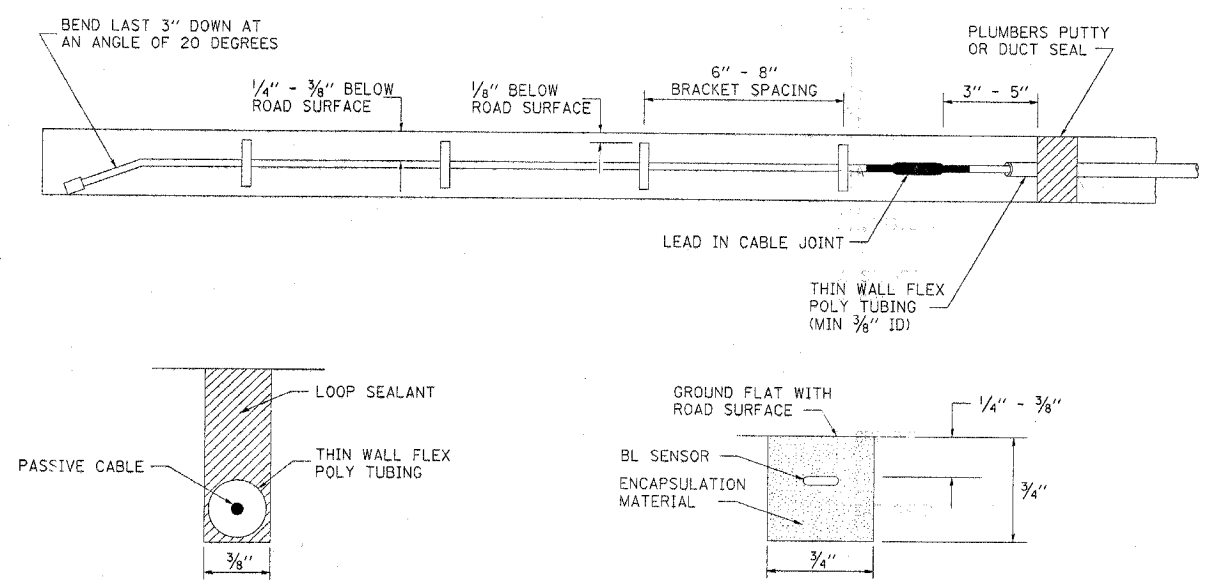
NOTES: THE EXISTING CONDUIT UNDER THE SB LANES SHALL BE LOCATED AND THE NEW HANDHOLE SHALL TIE INTO IT. THE EXISTING CONDUIT SHALL BE USED FOR THE NEW CABLE RUNS. THE COST OF LOCATING THE CONDUIT WILL BE INCLUDED IN THE COST OF THE HANDHOLE.

LOOP SPLICING DETAIL



MINIMUM 1" HEAT SHRINK TUBING OVERLAP ON WIRE
PVC AND SHIELDED CABLE TO FORM WATERTIGHT SEAL

AXLE DETECTOR DETAILS



THE PASSIVE CABLE SHALL BE PLACED IN A THIN WALL PLASTIC TUBE FOR ADDITIONAL PROTECTION.

TYPICAL CROSS SECTION OF A BL SENSOR INSTALLATION

PLOT DATE = 8/18/2008
FILE NAME = c:\projects\98948\98948.dwg
PLOT SCALE = 1/8"=1'-0"
USER NAME = steph