

F.A.T. RTE.	SECTION	COUNTY	TOTAL SHEETS	SHEET NO.
90/94/290	2016-066T	COOK	83	1
ILLINOIS			CONTRACT NO. 62D78	

FOR INDEX OF SHEETS AND STANDARDS SEE SHEET NO. 2

STATE OF ILLINOIS  
DEPARTMENT OF TRANSPORTATION

PROJECT LOCATED IN CITY OF CHICAGO \*83+8 = 91 total sheets  
8-9T-277-13

DESIGN DESIGNATIONS:	POSTED DESIGN SPEEDS:
WB I-290	45 /50 MPH
RAMP NW	35 /35 MPH
MORGAN ST EXIT RAMP	30 /30 MPH
86,700(2040) INTERSTATE	
32,500(2040) INTERSTATE RAMP	
2,000(2040) INTERSTATE RAMP	

**PROPOSED  
HIGHWAY PLANS**

FAI 90/94/290 (I-90/94/290)  
(JANE BYRNE INTERCHANGE)  
I-290 WB 78" STORM SEWER  
SECTION: 2016-066T  
PROJECT: NHPP-000V (123)  
COOK COUNTY  
C-91-101-17



NPDES PERMIT INFORMATION	
NPDES Disturbed	
Area =	0.22 Acres
Approximate Location of Roadway is :	
Longitude	87° 39' 6" W
Latitude	41° 52' 32" N

LOCATION OF SECTION INDICATED THUS: -

**AECOM** 303 EAST WACKER DRIVE, SUITE 1400  
CHICAGO, IL 60601-5276  
PHONE: (312) 373-7700  
FAX: (312) 373-6800

STATE OF ILLINOIS  
DEPARTMENT OF TRANSPORTATION

SUBMITTED April 21 2017  
*[Signature]* REGIONAL ENGINEER

June 30 2017  
*[Signature]* ENGINEER OF DESIGN AND ENVIRONMENT

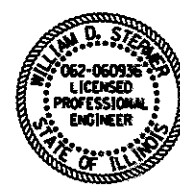
June 30 2017  
*[Signature]* 2  
DIRECTOR OF PROGRAM DEVELOPMENT

PRINTED BY THE AUTHORITY  
OF THE STATE OF ILLINOIS

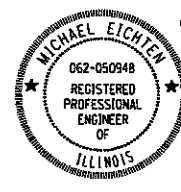
DISTRICT 1 DESIGN /CONSULTANT SERVICES: BRIAN KUTTAB, P.E. (847)705-4431 SCHAUMBURG, ILLINOIS



*[Signature]* 4/20/17  
DANNY B. MANOJLOVSKI, P.E. DATE  
LICENSE EXPIRES 11/30/2017  
SHEET RANGE 1-47-77-83



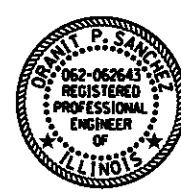
*[Signature]* 4/20/2017  
WILLIAM D. STERMER, P.E. DATE  
LICENSE EXPIRES 11/30/2017  
SHEET RANGE 67



*[Signature]* 4/20/17  
MICHAEL J. EICHEN, P.E. DATE  
LICENSE EXPIRES 11/30/2017  
SHEET RANGE 1-47-77-83



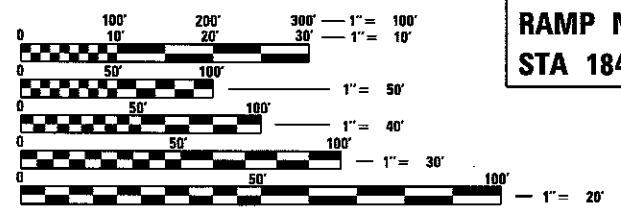
*[Signature]* 4/20/17  
MATTHEW J. LETOURNEAU, P.E. DATE  
LICENSE EXPIRES 11/30/2017  
SHEET RANGE 68-69



*[Signature]* 4/20/17  
ORANIT P. SANCHEZ, P.E. DATE  
LICENSE EXPIRES 11/30/2017  
SHEET RANGE 1-47-77-83

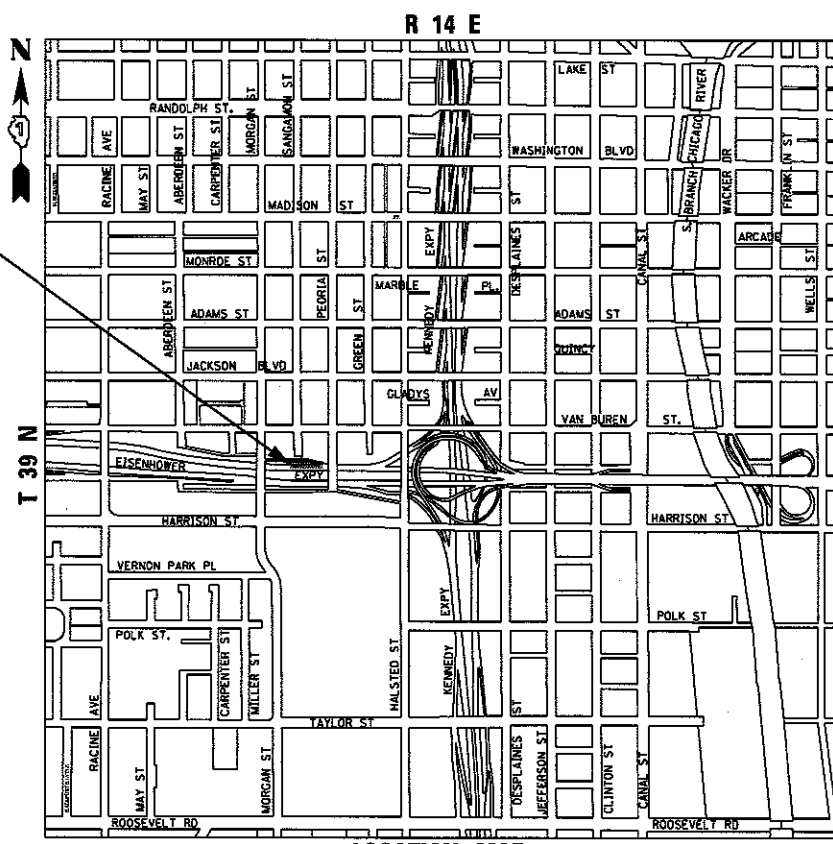
78" STORM SEWER  
STA 1842+47.80 TO STA 1845+57.70

RAMP NW PAVEMENT RECONSTRUCTION  
STA 1842+02.61 TO STA 1845+70.00



FULL SIZE PLANS HAVE BEEN PREPARED USING STANDARD ENGINEERING SCALES. REDUCED SIZED PLANS WILL NOT CONFORM TO STANDARD SCALES. IN MAKING MEASUREMENTS ON REDUCED PLANS, THE ABOVE SCALES MAY BE USED.

C.U.A.N.  
CHICAGO UTILITY ALERT NETWORK  
1-312-744-7000



LOCATION MAP  
NOT TO SCALE

GROSS LENGTH = 367.39 FT (0.070 MILES)  
NET LENGTH = 367.39 FT (0.070 MILES)

PROJECT MANAGER: BRIAN KUTTAB, P.E.  
CONTRACT NO. 62D78



CODE NO.	ITEM	UNIT	TOTAL QUANTITY	CONSTRUCTION CODE		
				90% FED 10% STATE ROADWAY	100% STATE ROADWAY	90% FED 10% STATE HIGHWAY LIGHTING
				0004	0004	0021
				URBAN	URBAN	URBAN
550A1130	STORM SEWERS, CLASS A, TYPE 4 78"	FOOT	295	295		
55100500	STORM SEWER REMOVAL 12"	FOOT	41	41		
59300100	CONTROLLED LOW-STRENGTH MATERIAL	CU YD	1091	1091		
60255500	MANHOLES TO BE ADJUSTED	EACH	1	1		
60500050	REMOVING CATCH BASINS	EACH	2	2		
63700175	CONCRETE BARRIER, SINGLE FACE, 42 INCH HEIGHT	FOOT	49	49		
63700805	CONCRETE BARRIER TRANSITION	FOOT	10	10		
63700900	CONCRETE BARRIER BASE	FOOT	108	108		
64300260	IMPACT ATTENUATORS (FULLY REDIRECTIVE, NARROW), TEST LEVEL 3	EACH	1	1		
* 66900200	NON-SPECIAL WASTE DISPOSAL	CU YD	1400	1400		
* 66900450	SPECIAL WASTE PLANS AND REPORTS	LSUM	1	1		
* 66900530	SOIL DISPOSAL ANALYSIS	EACH	1	1		
67100100	MOBILIZATION	LSUM	1	1		
70300240	TEMPORARY PAVEMENT MARKING - LINE 6"	FOOT	1550	1550		
70400100	TEMPORARY CONCRETE BARRIER	FOOT	200	200		

Handwritten cloud-shaped note containing the values 1550 and 200, with a triangle symbol to the right.

\* DENOTES SPECIALTY ITEM

\*\* DENOTES NON-PARTICIPATING ITEM

FILE PATH = F:\62078\62078.dgn



D162078-1ht-500.dgn  
 USER NAME = dshavez  
 PLOT SCALE = 2.0000' / in.  
 PLOT DATE = 5/4/2017

DESIGNED - AFC  
 DRAWN - AFC  
 CHECKED - MJE  
 DATE - 5/4/2017

REVISED -  
 REVISED -  
 REVISED -  
 REVISED -

STATE OF ILLINOIS  
 DEPARTMENT OF TRANSPORTATION

SUMMARY OF QUANTITIES

SCALE: SHEET 2 OF 6 SHEETS STA. TO STA.

F.A.I. RTE.	SECTION	COUNTY	TOTAL SHEETS	SHEET NO.
90/94/290	2016-066T	COOK	83	5
CONTRACT NO. 62D78				
ILLINOIS FED. AID PROJECT				

REV 9-6-17

REV

CODE NO.	ITEM	UNIT	TOTAL QUANTITY	CONSTRUCTION CODE		
				90% FED 10% STATE ROADWAY	100% STATE ROADWAY	90% FED 10% STATE HIGHWAY LIGHTING
				0004 URBAN	0004 URBAN	0021 URBAN
70400200	RELOCATE TEMPORARY CONCRETE BARRIER	FOOT	825	825		
70400600	RELOCATE TEMPORARY CONCRETE BARRI <del>R</del> , STATE OWNED	FOOT	1350	1350		
<del>70600260</del>	<del>IMPACT ATTENUATORS, TEMPORARY (FULLY REDIRECTIVE, NARROW), TEST LEVEL 3</del>	<del>EACH</del>	<del>3</del>	<del>3</del>		
70600332	IMPACT ATTENUATORS, RELOCATE (FULLY REDIRECTIVE, NARROW), TEST LEVEL 3	EACH	3	3		
* 72000200	SIGN PANEL - TYPE 2	SQ FT	34	34		
* 72400320	REMOVE SIGN PANEL - TYPE 2	SQ FT	20	20		
* 72800100	TELESCOPING STEEL SIGN SUPPORT	FOOT	12	12		
* 73100100	BASE FOR TELESCOPING STEEL SIGN SUPPORT	EACH	1	1		
* 78200011	BARRIER WALL REFLECTORS, TYPE C	EACH	136	136		
* 81028200	UNDERGROUND CONDUIT, GALVANIZED STEEL, 2" DIA.	FOOT	15			15
* 81100320	CONDUIT ATTACHED TO STRUCTURE, 1" DIA., PVC COATED GALVANIZED STEEL	FOOT	30			30
* 81300220	JUNCTION BOX, STAINLESS STEEL, ATTACHED TO STRUCTURE, 6" X 6" X 4"	EACH	2			2
* 81702110	ELECTRIC CABLE IN CONDUIT, 600V (XLP-TYPE USE) 1/C NO. 10	FOOT	90			90
* 89502300	REMOVE ELECTRIC CABLE FROM CONDUIT	FOOT	448			448
Z0013798	CONSTRUCTION LAYOUT	LSUM	1	1		

1

136 136

1

FILE PATH = F:\62078\27-000\601-006-Roadway\Print\62078.dgn

\* DENOTES SPECIALTY ITEM

\*\* DENOTES NON-PARTICIPATING ITEM



DIG2078-shr-500.dgn  
 USER NAME = dishovaz  
 PLOT SCALE = 2.0000' / 1" =  
 PLOT DATE = 5/4/2017

DESIGNED - AFC  
 DRAWN - AFC  
 CHECKED - MJE  
 DATE - 5/4/2017

REVISED -  
 REVISED -  
 REVISED -  
 REVISED -

STATE OF ILLINOIS  
 DEPARTMENT OF TRANSPORTATION

SUMMARY OF QUANTITIES

SCALE: SHEET 3 OF 6 SHEETS STA. TO STA.

F.A.I. RTE.	SECTION	COUNTY	TOTAL SHEETS	SHEET NO.
90/794/290	2016-066T	COOK	83	6
CONTRACT NO. 62078				

REV 9-6-17

REV

CODE NO.	ITEM	UNIT	TOTAL QUANTITY	CONSTRUCTION CODE		
				90% FED 10% STATE ROADWAY	100% STATE ROADWAY	90% FED 10% STATE HIGHWAY LIGHTING
				0004	0004	0021
				URBAN	URBAN	URBAN
* * Z0018500	DRAINAGE STRUCTURES TO BE CLEANED	EACH	6		6	
Z0018913	DRILL AND GROUT #8 TIE BARS	EACH	184	184		
Z0019600	DUST CONTROL WATERING	UNIT	5	5		
Z0030850	TEMPORARY INFORMATION SIGNING	SQ FT	46	46		
Z0037300	PAVEMENT GROOVING	SO YD	490	490		
Z0062456	TEMPORARY PAVEMENT	SO YD	577	577		
∅ Z0076600	TRAINEES	HOUR	500	500		
∅ Z0076604	TRAINEES TRAINING PROGRAM GRADUATE	HOUR	500	500		
X0327267	SLOPE INCLINOMETER	EACH	4	4		
X0327357	CONSTRUCTION VIBRATION MONITORING	LSUM	1	1		
* X0327616	MAINTAINING ITS DURING CONSTRUCTION	CAL MO	4			4
X0327645	TEMPORARY SOIL RETENTION SYSTEM (SPECIAL)	SQ FT	16146	16146		
X0327980	PAVEMENT MARKING REMOVAL - WATER BLASTING	SQ FT	2254	2254		
X1200028	REMOVE TEMPORARY BULKHEAD	EACH	2	2		
* * X1300001	STORM SEWERS TO BE CLEANED 84"	FOOT	867		867	
* * X5538700	STORM SEWERS TO BE CLEANED 42"	FOOT	50		50	

\* DENOTES SPECIALTY ITEM      \*\* DENOTES NON-PARTICIPATING ITEM      ∅ 0042

FILE PATH : P:\6228727\608-ENR\008-Roadway\Printed\020718-F.mxd 20170914 10:16:07 AM - s00.dgn



D162078-shr-S00.dgn  
 USER NAME = d.shevez  
 PLOT SCALE = 2.0000 "/>

DESIGNED - AFC      REVISED -  
 DRAWN - AFC      REVISED -  
 CHECKED - MJE      REVISED -  
 DATE - 5/4/2017      REVISED -

STATE OF ILLINOIS  
 DEPARTMENT OF TRANSPORTATION

SUMMARY OF QUANTITIES

SCALE: SHEET 4 OF 6 SHEETS STA. TO STA.

F.A.I. RTE.	SECTION	COUNTY	TOTAL SHEETS	SHEET NO.
90/94/290	2016-066T	COOK	83	7
CONTRACT NO. 62D78				
ILLINOIS FED. AID PROJECT				

REV 9-6-17

Rev

CODE NO.	ITEM	UNIT	TOTAL QUANTITY	CONSTRUCTION CODE		
				90% FED 10% STATE ROADWAY	100% STATE ROADWAY	90% FED 10% STATE HIGHWAY LIGHTING
				0004	0004	0021
				URBAN	URBAN	URBAN
X6370250	CONCRETE BARRIER, VARIABLE CROSS-SECTION 42" HEIGHT	FOOT	49	49		
<del>X6430120</del>	<del>REMOVE IMPACT ATTENUATORS, NO SALVAGE</del>	<del>EACH</del>	<del>1</del>	<del>1</del>		
X7011015	TRAFFIC CONTROL AND PROTECTION (EXPRESSWAYS)	LSUM	1	1		
X7013820	TRAFFIC CONTROL SURVEILLANCE, EXPRESSWAYS	CAL DA	100	100		
X7015005	CHANGEABLE MESSAGE SIGN	CAL DA	100	100		
X7035104	TEMPORARY EPOXY PAVEMENT MARKING - LINE 4"	FOOT	5326	5326		
X7035108	TEMPORARY EPOXY PAVEMENT MARKING - LINE 8"	FOOT	728	728		
X7035112	TEMPORARY EPOXY PAVEMENT MARKING - LINE 12"	FOOT	101	101		
X7040125	PINNING TEMPORARY CONCRETE BARRIER	EACH	372	372		
<del>X7040650</del>	<del>REMOVE TEMPORARY CONCRETE BARRIER</del>	<del>FOOT</del>	<del>75</del>	<del>75</del>		
* X8100863	INTERCEPT EXISTING CONDUIT	EACH	2			2
* X8130115	DRILL EXISTING JUNCTION BOX	EACH	2			2
* X8730312	ELECTRIC CABLE IN CONDUIT, LEAD-IN, NO. 18 4/C, TWISTED, SHIELDED	FOOT	112			112
* X8850109	PREFORMED INDUCTION LOOP	FOOT	100			100
** X1300002	STORM SEWERS TO BE CLEANED 78"	FOOT	2096		2096	
X0900045	TEMPORARY PUMPING SYSTEM	CAL DA	100	100		

\* DENOTES SPECIALTY ITEM

\*\* DENOTES NON-PARTICIPATING ITEM

STATE OF ILLINOIS  
DEPARTMENT OF TRANSPORTATION

SUMMARY OF QUANTITIES

F.A.J. RTE.	SECTION	COUNTY	TOTAL SHEETS	SHEET NO.
90/94/290	2016-066T	COOK	83	8
CONTRACT NO. 62D78				

SCALE: SHEET 5 OF 6 SHEETS STA. TO STA.

ILLINOIS FED. AID PROJECT



D:\62078-shr-500.dgn  
USER NAME = dshewez  
PLOT SCALE = 2.0000' / 1" =  
PLOT DATE = 5/4/2017

DESIGNED - AFC  
DRAWN - AFC  
CHECKED - MJE  
DATE - 5/4/2017

REVISED -  
REVISED -  
REVISED -  
REVISED -

FILE PATH = F:\62078\2016\066T\9098\_CAD\9098\_Roadway\Printing\62D78.dgn

REV 9-6-17

REV



**SUGGESTED STAGES OF CONSTRUCTION AND TRAFFIC CONTROL SCHEDULE**

SHEET	ROADWAY/STATION	TEMPORARY EPOXY PAVEMENT MARKING - LINE 4"	TEMPORARY EPOXY PAVEMENT MARKING - LINE 8"	TEMPORARY PAVEMENT MARKING - LINE 6"	TEMPORARY CONCRETE BARRIER	RELOCATE TEMPORARY CONCRETE BARRIER, STATE OWNED	IMPACT ATTENUATORS, TEMPORARY (FULLY REDIRECTIVE, NARROW), TEST LEVEL 3	IMPACT ATTENUATORS, RELOCATE (FULLY REDIRECTIVE, NARROW), TEST LEVEL 3	PAVEMENT MARKING REMOVAL - WATER BLASTING	PINNING TEMPORARY CONCRETE BARRIER	BARRIER WALL REFLECTORS, TYPE C	TEMPORARY INFORMATION SIGNING	REMOVE TEMPORARY CONCRETE BARRIER	REMOVE IMPACT ATTENUATORS, NO SALVAGE
		FOOT	FOOT	FOOT	FOOT	FOOT	EACH	EACH	SO FT	EACH	EACH	SO FT	FOOT	EACH
<b>STAGE 1</b>														
2	318+50 TO 5240+00	0	0	0.0	0.0	0.0	0	0	0	0	0	0	0	0
3	5255+00 TO 5240+00	0	0	500.0	0.0	500.0	0	0	0	120	40	0	0	0
4	5240+00 TO 5210+00	0	0	0.0	0.0	0.0	0	0	0	0	0	0	0	0
9	203+00 TO 11+00	0	0	0.0	0.0	0.0	0	0	0	0	0	0	0	0
<b>STAGE 1 SUBSTAGE</b>														
3	5255+00 TO 5240+00	1,749	0	825.0	87.5	737.5	0	2	998	198	66	40	75.0	1
4	5240+00 TO 5210+00	888	0	0.0	0.0	0.0	0	0	300	0	0	0	0	0
9	203+00 TO 11+00	0	0	0.0	0.0	0.0	0	0	0	0	0	0	0	0
<b>TOTALS</b>		2,637	0	1,325.0	87.5	1237.5	0	2	1,298	318	106	40	75.0	1
<b>ALLOWANCE (1)</b>		2,637	0	225.0	112.5	112.5	0	1	195	54	18	6	0	0
<b>TOTALS WITH ALLOWANCE</b>		5,274	0	1,550.0	200.0	1350.0	0	3	1,493	372	124	46	75.0	1
<b>ROUNDED TOTALS</b>		5,274	0	1,550.0	200.0	1350.0	0	3	1,493	372	124	46	75.0	1

(1) FOR TEMPORARY EXPOXY PAVEMENT MARKINGS, SEE NOTE 21 IN TRAFFIC CONTROL GENERAL NOTES.

FILE PATH = c:\a\61719c\p\int\_aecom\line\local\AECOM\_05922\_NA\Documents\01\_Americas\Temporary\Staging\Schedule-01



0162D78-sh-t-Staging-Schedule-01  
 USER NAME = diahevez  
 PLOT SCALE = 100.0000 / 1"  
 PLOT DATE = 9/1/2017

DESIGNED - OPS  
 DRAWN - PHP  
 CHECKED - MJE  
 DATE - 7/21/2017

REVISED - 9/1/2017  
 REVISED -  
 REVISED -  
 REVISED -

STATE OF ILLINOIS  
 DEPARTMENT OF TRANSPORTATION

SUGGESTED STAGES OF CONSTRUCTION AND  
 TRAFFIC CONTROL SCHEDULE

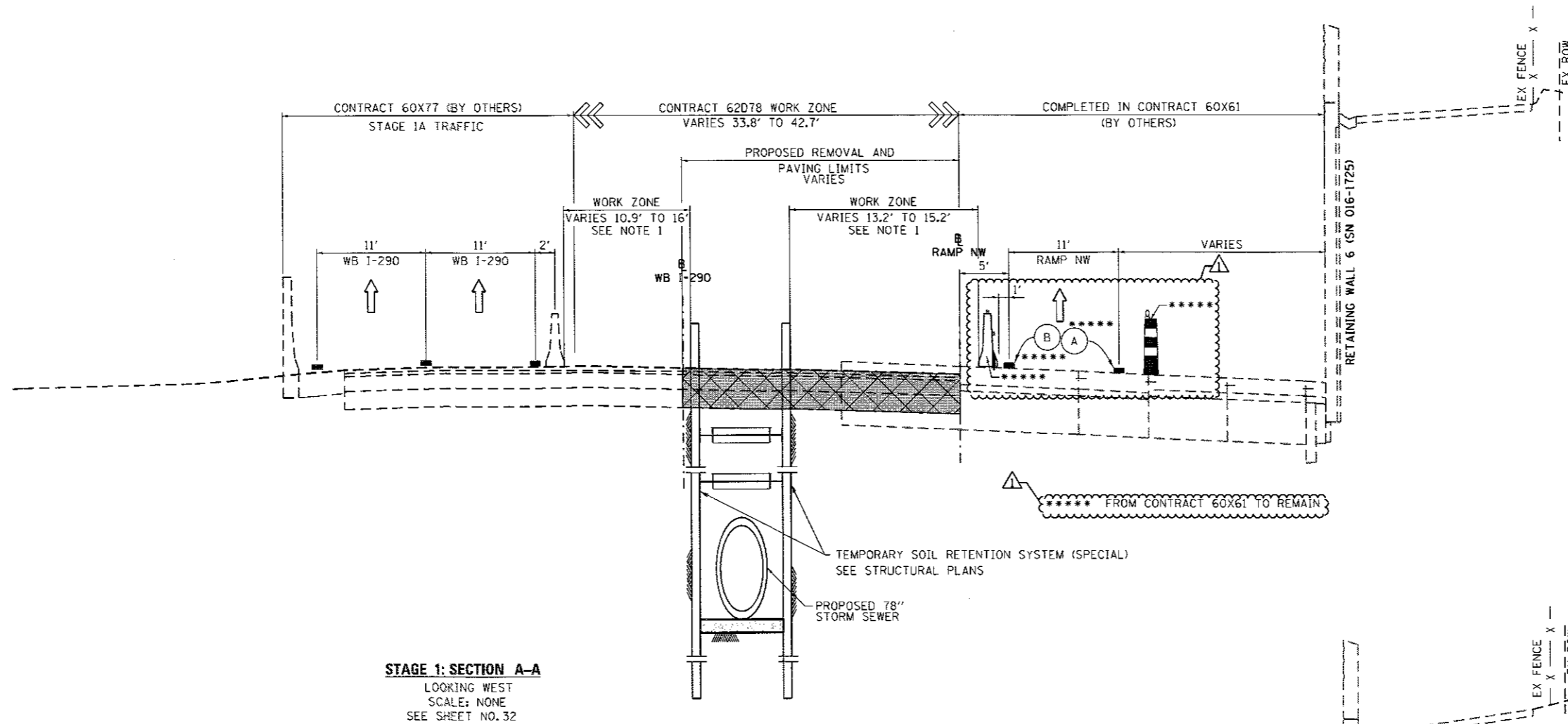
SCALE: NONE SHEET 1 OF 1 SHEETS STA. TO STA.

F.A.I. RTE.	SECTION	COUNTY	TOTAL SHEETS	SHEET NO.
90/94/290	2016-066T	COOK	83	27
CONTRACT NO. 62D78				
ILLINOIS FED. AID PROJECT				

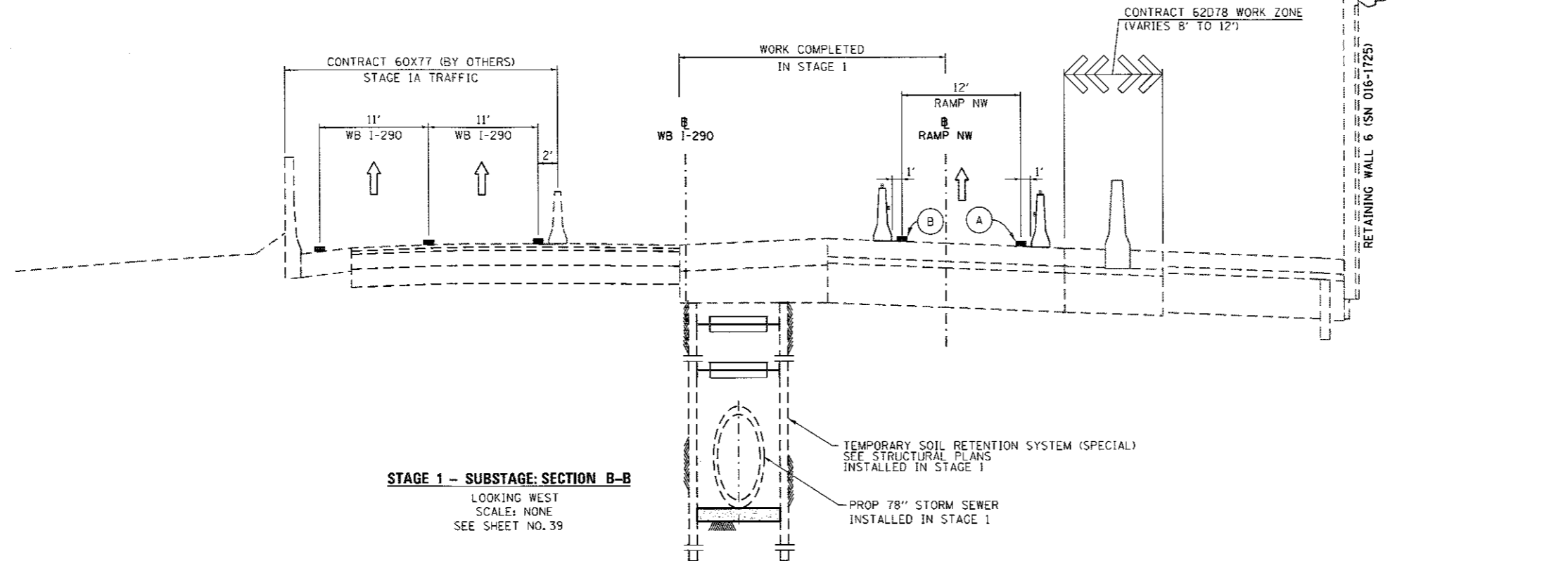
REV 9-6-17



FILE PATH: c:\p1\6174-79-PRINT\_mecomp\line\local\AECOM\_0582\_Mob\Documents\A\Americas\Transportation\60256938\_Circle\Phase 1\060\_CAD\066\_Roadway\Sheets\62078\_Contract\062078-shr-Stage-01



**STAGE 1: SECTION A-A**  
 LOOKING WEST  
 SCALE: NONE  
 SEE SHEET NO. 32



**STAGE 1 - SUBSTAGE: SECTION B-B**  
 LOOKING WEST  
 SCALE: NONE  
 SEE SHEET NO. 39

**PROPOSED TEMP PAVEMENT MARKINGS AND TRAFFIC CONTROL DEVICES**

- (A) TEMP EPOXY PVT MK LINE 4 (SOLID WHITE)
- (B) TEMP EPOXY PVT MK LINE 4 (SOLID YELLOW)
- TYPE II BARRICADES OR DRUMS WITH STEADY BURN LIGHT
- TEMPORARY CONCRETE BARRIER WITH BARRIER WALL REFLECTORS, TYPE C (2 EACH @ 25' SPACINGS PER STANDARD 704001)
- REMOVAL LIMITS
- TEMPORARY PAVEMENT

NOTES:  
 1. SEE CROSS SECTIONS FOR APPROXIMATE WORK ZONE LIMITS BETWEEN THE TEMPORARY CONCRETE BARRIER AND THE EDGES OF THE TEMPORARY SOIL RETENTION SYSTEM (SPECIAL).



D162078-shr-Stage-01	DESIGNED - OPS	REVISED - 09/01/2017
USER NAME = PIMSARNO	DRAWN - PHP	REVISED -
PLT SCALE = 20.0/200' / 1" =	CHECKED - MJE	REVISED -
DATE = 8/31/2017	DATE - 7/21/2017	REVISED -

STATE OF ILLINOIS  
 DEPARTMENT OF TRANSPORTATION

SUGGESTED STAGES OF CONSTRUCTION AND TRAFFIC CONTROL PLAN			
STAGE 1			
SCALE: NONE	SHEET 1 OF 1 SHEETS	STA. TO STA.	

F.A.I. RTE.	SECTION	COUNTY	TOTAL SHEETS	SHEET NO.
90/94/290	2016-066T	COOK	83	29
CONTRACT NO. 62078				
ILLINOIS FED. AID PROJECT				

REV 9-6-17

**NOTES:**

1. ALL TRAVEL LANES ON EB I-290, RAMP EN, AND RAMP ES SHALL BE MAINTAINED IN CURRENT STAGE AS PER CONTRACT 60X76 AND CONFORM TO ALL APPLICABLE IDOT DISTRICT 1 STANDARDS.

**PROPOSED TEMP PAVEMENT MARKINGS AND TRAFFIC CONTROL DEVICES**

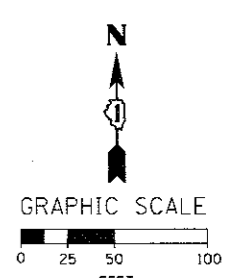
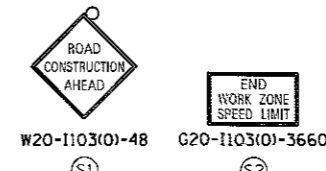
- (A) TEMP EPOXY PVT MK LINE 4 (SOLID WHITE)
- (B) TEMP EPOXY PVT MK LINE 4 (SOLID YELLOW)
- (C) TEMP EPOXY PVT MK LINE 4 (2' DASH 6' SKIP, WHITE)
- (D) TEMP EPOXY PVT MK LINE 5 (10' DASH 30' SKIP, WHITE)
- (E) TEMP EPOXY PVT MK LINE 8 (SOLID WHITE)
- (F) TEMP EPOXY PVT MK LINE 12 (WHITE CHEVRONS @ 45°, 30' SPACING) (TYP)
- (G) TEMP CONC BARRIER @ 12:1 ON TAPERS UNLESS OTHERWISE NOTED
- (H) IMPACT ATTENUATOR, TEMPORARY, TEST LEVEL 3 (SEE SCHEDULE)
- (I) TYPE II BARRICADE OR DRUMS WITH STEADY BURN MONODIRECTIONAL LIGHT @ 50' C-C (TYP) ON TAPERS AND RAMPS @ 100' C-C (TYP) ON TANGENTS
- (J) DIRECTIONAL INDICATOR BARRICADE WITH STEADY BURN MONODIRECTIONAL LIGHT @ 50' C-C
- (K) REL TEMP CONC BARRIER @ 12:1 ON TAPERS UNLESS OTHERWISE NOTED
- (L) IMPACT ATTENUATOR, RELOCATE (SEE SCHEDULE)
- (M) TEMP EPOXY PVT MK LINE 8 (3' DASH 9' SKIP, WHITE)

**LEGEND:**

- WORK ZONE
- TEMPORARY CONCRETE BARRIER
- TEMPORARY IMPACT ATTENUATOR
- TEMPORARY SOIL RETENTION SYSTEM OR BRACED EXCAVATION
- DIRECTION OF TRAFFIC FLOW
- TYPE III BARRICADE
- TYPE II BARRICADE OR DRUMS WITH STEADY BURN MONODIRECTIONAL LIGHT
- DIRECTIONAL INDICATOR BARRICADE WITH STEADY BURN MONODIRECTIONAL SIGN
- ARROW BOARD
- FROM CONTRACT 60X77 TO REMAIN
- FROM CONTRACT 60X76 TO REMAIN
- FROM CONTRACT 60X78 TO REMAIN
- FROM CONTRACT 60X78 TO REMAIN
- FROM CONTRACT 60X81 TO REMAIN



MATCH LINE "A" SEE SHEET NO. 31



FILE PATH: P:\617479-P\INT... AECOM 0582... 09/01/2017

<p>300 EAST WACKER DRIVE, SUITE 1400 CHICAGO, IL 60601-5776 PHONE (312) 373-7700 FAX (312) 373-8800</p>	D162078-Sht-Staging-ML-1-01 USER NAME = PIMSARND PLOT SCALE = 1/8" = 100'-0" / 1" = 1000'-0" PLOT DATE = 9/11/2017	DESIGNED - PHP DRAWN - PHP CHECKED - MJE DATE - 5/4/2017	REVISED -  09/01/2017 REVISED - REVISED - REVISED -	STATE OF ILLINOIS DEPARTMENT OF TRANSPORTATION	SUGGESTED STAGES OF CONSTRUCTION AND TRAFFIC CONTROL PLAN MAINLINE STAGE 1 SCALE: 1" = 50' SHEET 1 OF 9 SHEETS STA. 303+50 TO STA. 318+50	F.A.I. R.T.E. 90/94/290 SECTION 2016-066T COUNTY COOK TOTAL SHEETS 83 SHEET NO. 30 CONTRACT NO. 62D78 ILLINOIS FED. AID PROJECT
---	---	---	--	---	---	---

REV 9-6-17

**NOTES:**

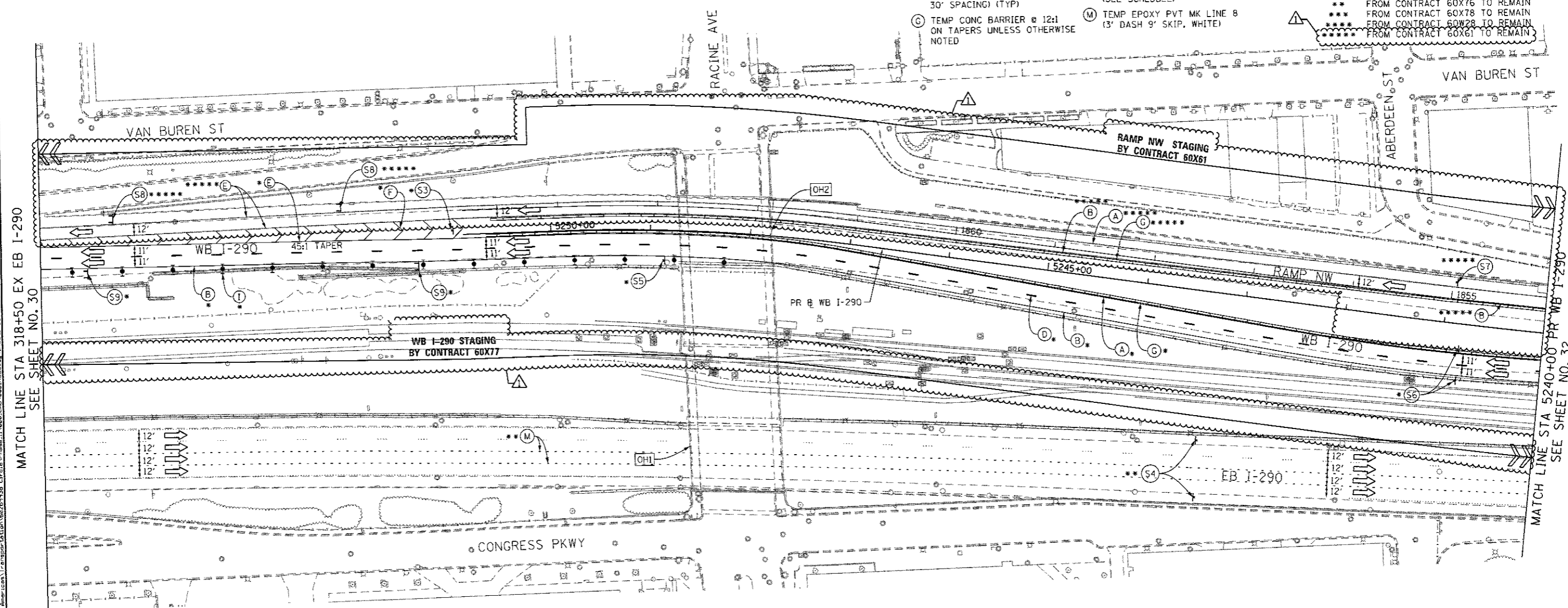
- ALL TRAVEL LANES ON EB I-290, RAMP EN, AND RAMP ES SHALL BE MAINTAINED IN CURRENT STAGE AS PER CONTRACT 60X76 AND CONFORM TO ALL APPLICABLE IDOT DISTRICT 1 STANDARDS.
- ALL TRAVEL LANES ON WB I-290 AND RAMP SW SHALL BE MAINTAINED IN CURRENT STAGE AS PER CONTRACT 60X77 AND CONFORM TO ALL APPLICABLE IDOT DISTRICT 1 STANDARDS.

**PROPOSED TEMP PAVEMENT MARKINGS AND TRAFFIC CONTROL DEVICES**

- (A) TEMP EPOXY PVT MK LINE 4 (SOLID WHITE)
- (B) TEMP EPOXY PVT MK LINE 4 (SOLID YELLOW)
- (C) TEMP EPOXY PVT MK LINE 4 (2' DASH 6' SKIP, WHITE)
- (D) TEMP EPOXY PVT MK LINE 5 (10' DASH 30' SKIP, WHITE)
- (E) TEMP EPOXY PVT MK LINE 8 (SOLID WHITE)
- (F) TEMP EPOXY PVT MK LINE 12 (WHITE CHEVRONS @ 45°, 30' SPACING) (TYP)
- (G) TEMP CONC BARRIER @ 12:1 ON TAPERS UNLESS OTHERWISE NOTED
- (H) IMPACT ATTENUATOR, TEMPORARY, TEST LEVEL 3 (SEE SCHEDULE)
- (I) TYPE II BARRICADE OR DRUMS WITH STEADY BURN MONODIRECTIONAL LIGHT @ 50' C-C (TYP) ON TAPERS AND RAMPS @ 100' C-C (TYP) ON TANGENTS
- (J) DIRECTIONAL INDICATOR BARRICADE WITH STEADY BURN MONODIRECTIONAL LIGHT @ 50' C-C
- (K) REL TEMP CONC BARRIER @ 12:1 ON TAPERS UNLESS OTHERWISE NOTED
- (L) IMPACT ATTENUATOR, RELOCATE (SEE SCHEDULE)
- (M) TEMP EPOXY PVT MK LINE 8 (3' DASH 9' SKIP, WHITE)

**LEGEND:**

- WORK ZONE
- TEMPORARY CONCRETE BARRIER
- TEMPORARY IMPACT ATTENUATOR
- TEMPORARY SOIL RETENTION SYSTEM OR BRACED EXCAVATION
- DIRECTION OF TRAFFIC FLOW
- TYPE III BARRICADE
- TYPE II BARRICADE OR DRUMS WITH STEADY BURN MONODIRECTIONAL LIGHT
- DIRECTIONAL INDICATOR BARRICADE WITH STEADY BURN MONODIRECTIONAL SIGN
- ARROW BOARD
- FROM CONTRACT 60X77 TO REMAIN
- FROM CONTRACT 60X76 TO REMAIN
- FROM CONTRACT 60X78 TO REMAIN
- FROM CONTRACT 60X28 TO REMAIN
- FROM CONTRACT 60X61 TO REMAIN

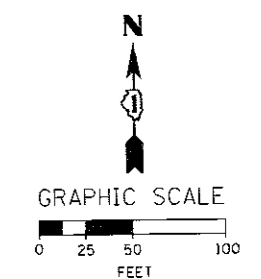
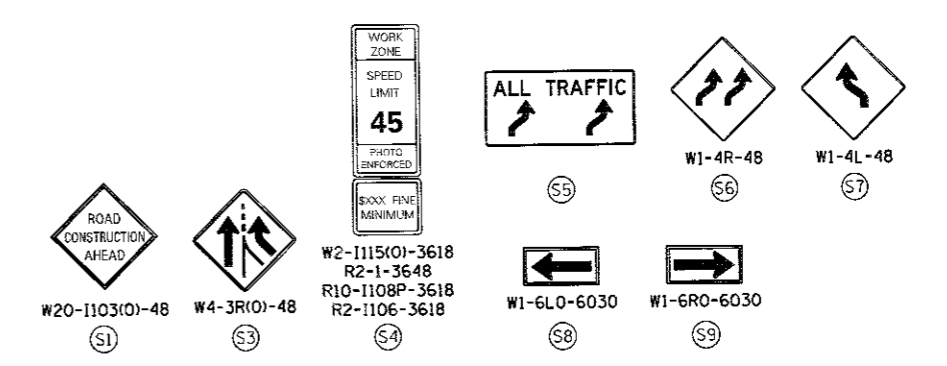
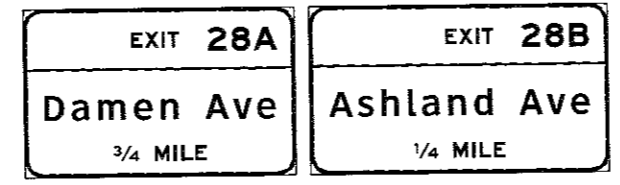
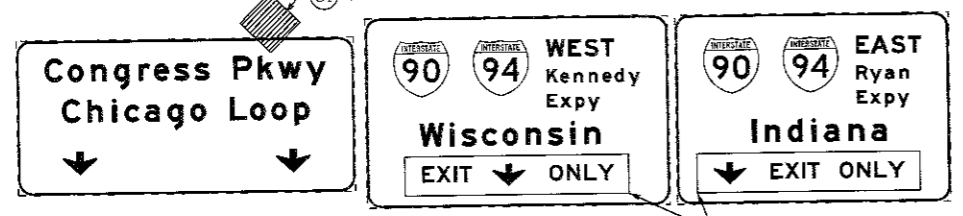


MATCH LINE STA 318+50 EX EB I-290 SEE SHEET NO. 30

MATCH LINE STA 5240+00 PR WB I-290 SEE SHEET NO. 32

[OH1] EXISTING OVERHEAD SIGNS TO REMAIN

[OH2] EXISTING OVERHEAD SIGNS TO REMAIN



<b>AECOM</b> 300 EAST WACKER DRIVE, SUITE 1400 CHICAGO, IL 60601-5076 PHONE: (312) 973-7100 FAX: (312) 373-8800	D162078-Sht-Staging-ML-1-02	DESIGNED - PHP	REVISED - 09/01/2017
	USER NAME = PIMSARNO	DRAWN - PHP	REVISED -
	PLOT SCALE = 100.0000' / 1"	CHECKED - MJE	REVISED -
	PLOT DATE = 9/1/2017	DATE - 7/21/2017	REVISED -

**STATE OF ILLINOIS  
DEPARTMENT OF TRANSPORTATION**

**SUGGESTED STAGES OF CONSTRUCTION AND TRAFFIC CONTROL PLAN  
MAINLINE STAGING 1**

SCALE: 1" = 50' SHEET 2 OF 9 SHEETS STA. 318+50 TO STA. 5240+00

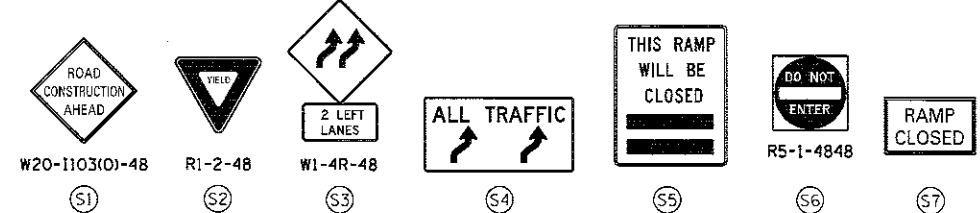
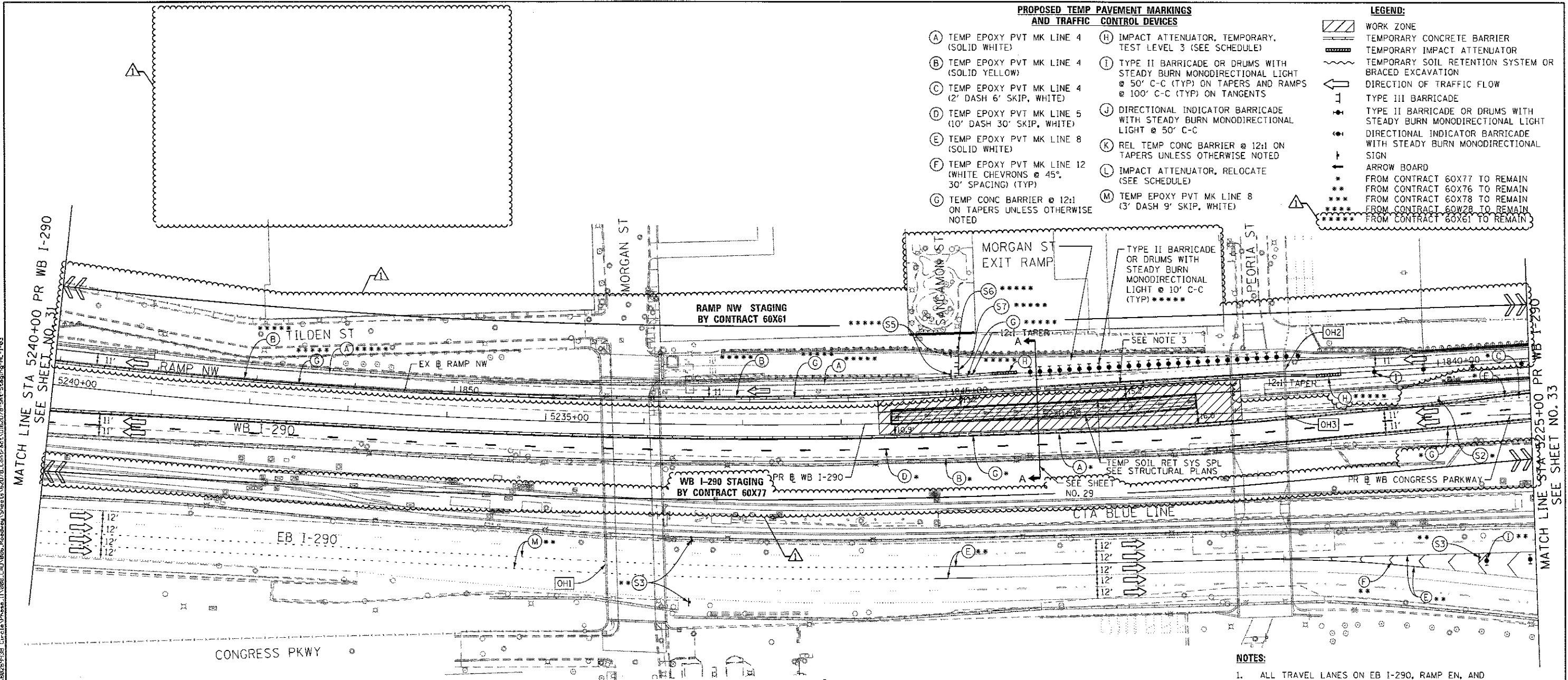
F.A.I. RTE.	SECTION	COUNTY	TOTAL SHEETS	SHEET NO.
90/94/290	2016-066T	COOK	83	31
CONTRACT NO. 62D78				
ILLINOIS FED. AID PROJECT				

REV 9-6-17

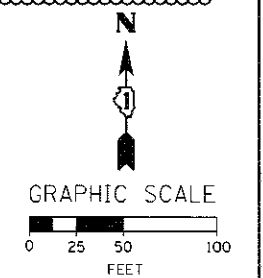
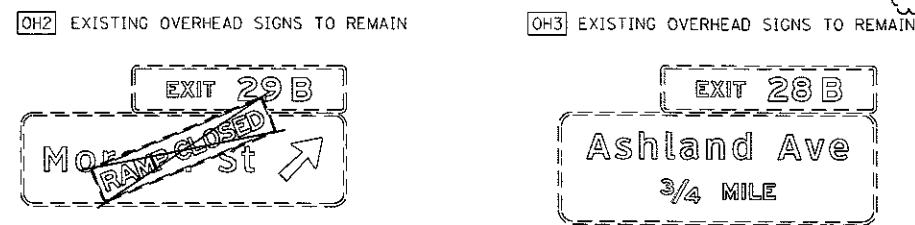
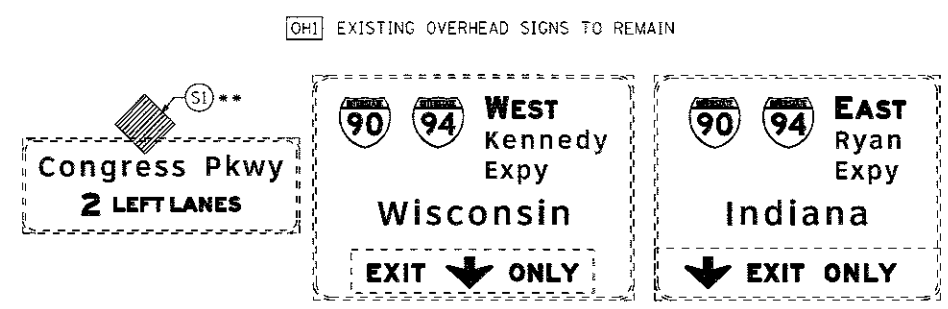
**PROPOSED TEMP PAVEMENT MARKINGS AND TRAFFIC CONTROL DEVICES**

- (A) TEMP EPOXY PVT MK LINE 4 (SOLID WHITE)
- (B) TEMP EPOXY PVT MK LINE 4 (SOLID YELLOW)
- (C) TEMP EPOXY PVT MK LINE 4 (2' DASH 6' SKIP, WHITE)
- (D) TEMP EPOXY PVT MK LINE 5 (10' DASH 30' SKIP, WHITE)
- (E) TEMP EPOXY PVT MK LINE 8 (SOLID WHITE)
- (F) TEMP EPOXY PVT MK LINE 12 (WHITE CHEVRONS @ 45°, 30' SPACING) (TYP)
- (G) TEMP CONC BARRIER @ 12:1 ON TAPERS UNLESS OTHERWISE NOTED
- (H) IMPACT ATTENUATOR, TEMPORARY, TEST LEVEL 3 (SEE SCHEDULE)
- (I) TYPE II BARRICADE OR DRUMS WITH STEADY BURN MONODIRECTIONAL LIGHT @ 50' C-C (TYP) ON TAPERS AND RAMP
- (J) DIRECTIONAL INDICATOR BARRICADE WITH STEADY BURN MONODIRECTIONAL LIGHT @ 50' C-C
- (K) REL TEMP CONC BARRIER @ 12:1 ON TAPERS UNLESS OTHERWISE NOTED
- (L) IMPACT ATTENUATOR, RELOCATE (SEE SCHEDULE)
- (M) TEMP EPOXY PVT MK LINE 8 (3' DASH 9' SKIP, WHITE)

- LEGEND:**
- WORK ZONE
  - TEMPORARY CONCRETE BARRIER
  - TEMPORARY IMPACT ATTENUATOR
  - TEMPORARY SOIL RETENTION SYSTEM OR BRACED EXCAVATION
  - DIRECTION OF TRAFFIC FLOW
  - TYPE III BARRICADE
  - TYPE II BARRICADE OR DRUMS WITH STEADY BURN MONODIRECTIONAL LIGHT
  - DIRECTIONAL INDICATOR BARRICADE WITH STEADY BURN MONODIRECTIONAL SIGN
  - ARROW BOARD
  - FROM CONTRACT 60X77 TO REMAIN
  - FROM CONTRACT 60X76 TO REMAIN
  - FROM CONTRACT 60X78 TO REMAIN
  - FROM CONTRACT 60W28 TO REMAIN
  - FROM CONTRACT 60X61 TO REMAIN



- NOTES:**
- ALL TRAVEL LANES ON EB I-290, RAMP EN, AND RAMP ES SHALL BE MAINTAINED IN CURRENT STAGE AS PER CONTRACT 60X76 AND CONFORM TO ALL APPLICABLE IDOT DISTRICT 1 STANDARDS.
  - ALL TRAVEL LANES ON WB I-290 AND RAMP SW SHALL BE MAINTAINED IN CURRENT STAGE AS PER CONTRACT 60X77 AND CONFORM TO ALL APPLICABLE IDOT DISTRICT 1 STANDARDS.
  - ALLOWANCE QUANTITIES OF 500' OF RELOCATE TEMPORARY CONCRETE BARRIER, STATE OWNED. 500' OF TEMPORARY PAVEMENT MARKING - LINE 6", 40 EACH OF BARRIER WALL REFLECTORS, TYPE C AND 120 EACH OF PINNING TEMPORARY CONCRETE BARRIER HAVE BEEN INCLUDED FOR WORK ZONE FIELD ADJUSTMENT AS REQUIRED (SEE SCHEDULE).



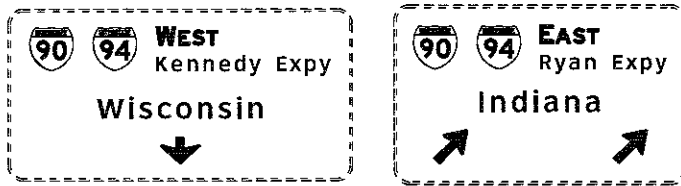
<b>AECOM</b> <small>303 EAST WACKER DRIVE, SUITE 1400          CHICAGO, IL 60601-5076          PHONE: (312) 373-7700 FAX: (312) 373-8800</small>	D162078-Sht-Staging-ML-1-83 USER NAME = PIMSARN0 PLOT SCALE = 1/8" = 100.0000' / 1" / 1" PLOT DATE = 9/1/2017	DESIGNED - PHP DRAWN - PHP CHECKED - MJE DATE - 7/21/2017	REVISED -  09/01/2017 REVISED - REVISED - REVISED -	STATE OF ILLINOIS DEPARTMENT OF TRANSPORTATION	SUGGESTED STAGES OF CONSTRUCTION AND TRAFFIC CONTROL PLAN <b>MAINLINE STAGING 1</b> SCALE: 1" = 50' SHEET 3 OF 9 SHEETS STA. 5255+00 TO STA. 5240+00	F.A.I. RTE. 90/94/290 SECTION 2016-066T COUNTY COOK SHEETS 83 TOTAL SHEETS 32 SHEET NO. 32 CONTRACT NO. 62D78 ILLINOIS FED. AID PROJECT
---	--	--	--	---	--	--

REV 9-6-17

**PROPOSED TEMP PAVEMENT MARKINGS AND TRAFFIC CONTROL DEVICES**

- (A) TEMP EPOXY PVT MK LINE 4 (SOLID WHITE)
- (B) TEMP EPOXY PVT MK LINE 4 (SOLID YELLOW)
- (C) TEMP EPOXY PVT MK LINE 4 (2' DASH 6' SKIP, WHITE)
- (D) TEMP EPOXY PVT MK LINE 5 (10' DASH 30' SKIP, WHITE)
- (E) TEMP EPOXY PVT MK LINE 8 (SOLID WHITE)
- (F) TEMP EPOXY PVT MK LINE 12 (WHITE CHEVRONS @ 45°, 30' SPACING) (TYP)
- (G) TEMP CONC BARRIER @ 12:1 ON TAPERS UNLESS OTHERWISE NOTED
- (H) IMPACT ATTENUATOR, TEMPORARY, TEST LEVEL 3 (SEE SCHEDULE)
- (I) TYPE II BARRICADE OR DRUMS WITH STEADY BURN MONODIRECTIONAL LIGHT @ 50' C-C (TYP) ON TAPERS AND RAMP @ 100' C-C (TYP) ON TANGENTS
- (J) DIRECTIONAL INDICATOR BARRICADE WITH STEADY BURN MONODIRECTIONAL LIGHT @ 50' C-C
- (K) REL TEMP CONC BARRIER @ 12:1 ON TAPERS UNLESS OTHERWISE NOTED
- (L) IMPACT ATTENUATOR, RELOCATE (SEE SCHEDULE)
- (M) TEMP EPOXY PVT MK LINE 8 (3' DASH 9' SKIP, WHITE)

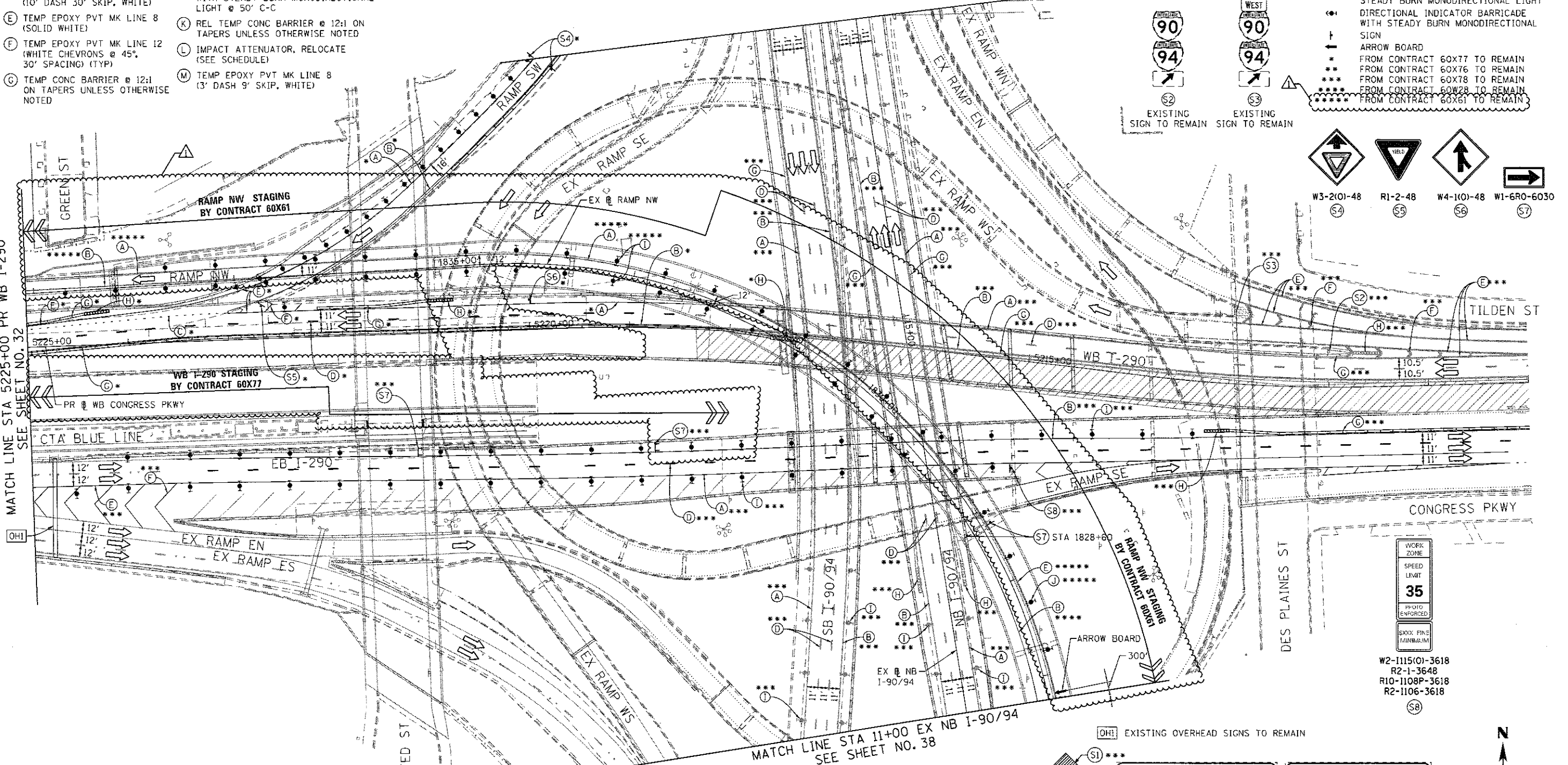
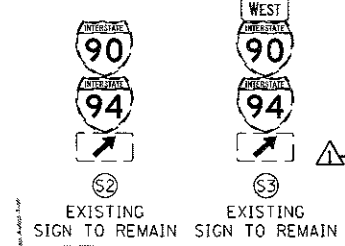
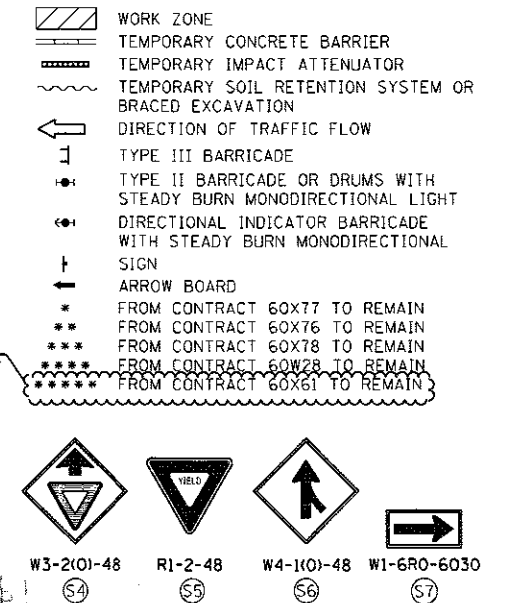
**OH2 EXISTING OVERHEAD SIGNS TO REMAIN**



**NOTES:**

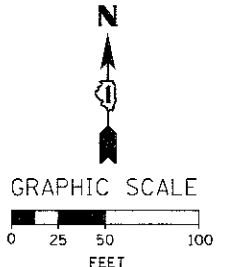
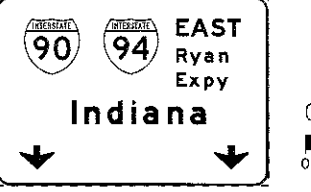
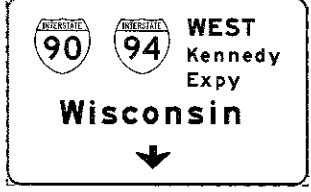
- FOR NB AND SB I-90/94 STAGING DETAIL SEE CONTRACT 60X78 STAGING PLANS.
- STAGING EAST OF STA 5218+33.89 ON WB I-290 IS SHOWN FOR INFORMATION ONLY. CONTRACTOR COORDINATION AND COOPERATION NEEDED WITH ADJACENT CONTRACT 60X78.
- STAGING ON EB I-290 STAGING IS SHOWN FOR INFORMATION ONLY. STAGING ON EB I-290, RAMP EN AND RAMP ES MAINTAINED AND COORDINATED BY CONTRACTS 60X76, 62A74 AND 60X78.

**LEGEND:**



MATCH LINE STA 5225+00 PR WB I-290 SEE SHEET NO. 32

MATCH LINE STA 11+00 EX NB I-90/94 SEE SHEET NO. 38



DI62078-Shr-Staging-ML-1-04  
 USER NAME = PIMSARNO  
 PLOT SCALE = 1/80,000  
 PLOT DATE = 9/1/2017

DESIGNED - PHP  
 DRAWN - PHP  
 CHECKED - MJE  
 DATE - 7/21/2017

REVISED - 09/01/2017  
 REVISED -  
 REVISED -  
 REVISED -

**STATE OF ILLINOIS  
 DEPARTMENT OF TRANSPORTATION**

**SUGGESTED STAGES OF CONSTRUCTION AND TRAFFIC CONTROL PLAN  
 MAINLINE STAGING 1**

SCALE: 1" = 50' SHEET 4 OF 9 SHEETS STA. 5225+00 TO STA. 5210+00

F.A.I. RTE.	SECTION	COUNTY	TOTAL SHEETS	SHEET NO.
90/94/290	2016-066T	COOK	83	33
CONTRACT NO. 62D78			ILLINOIS FED. AID PROJECT	

REV 9-6-17



**PROPOSED TEMP PAVEMENT MARKINGS AND TRAFFIC CONTROL DEVICES**

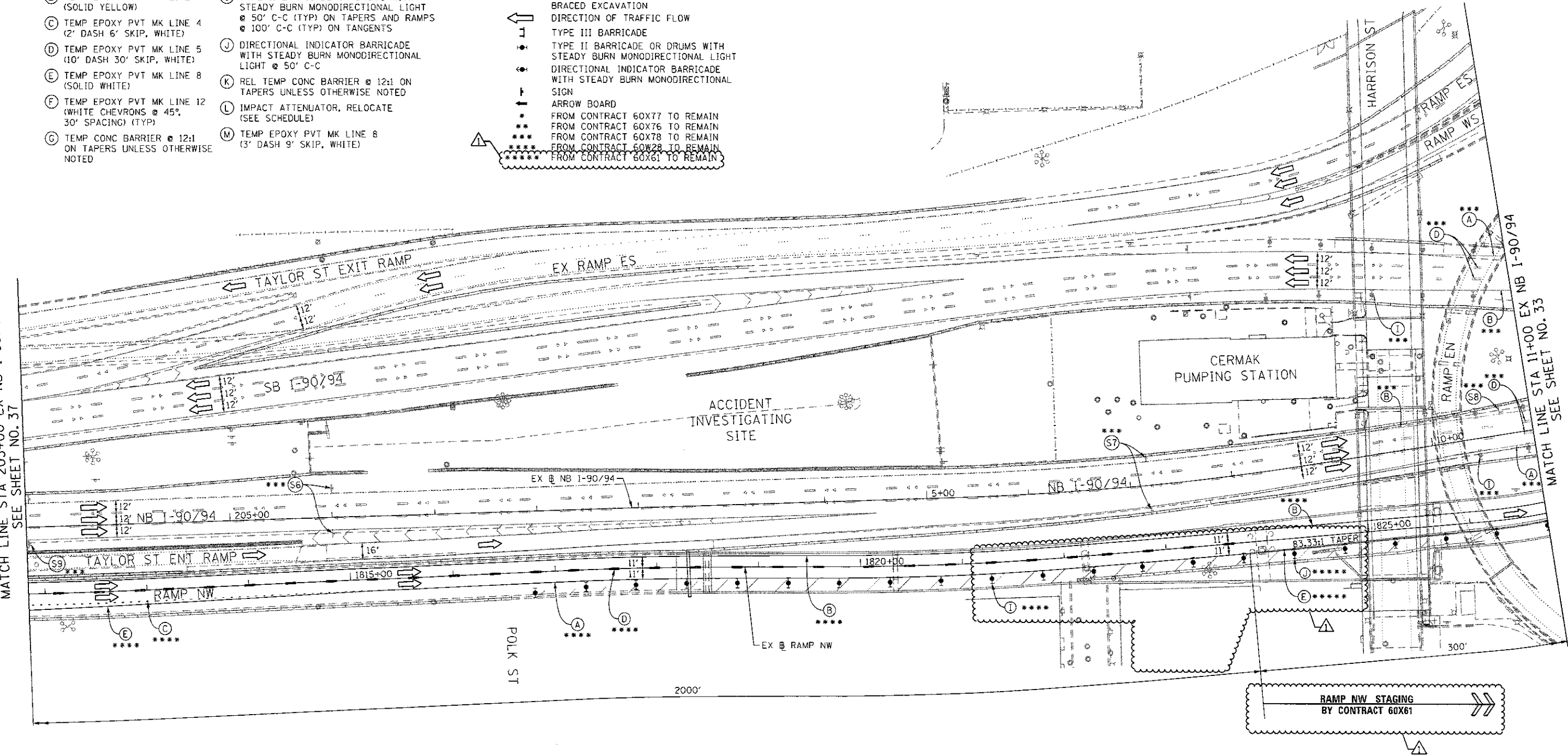
- (A) TEMP EPOXY PVT MK LINE 4 (SOLID WHITE)
- (B) TEMP EPOXY PVT MK LINE 4 (SOLID YELLOW)
- (C) TEMP EPOXY PVT MK LINE 4 (2' DASH 6' SKIP, WHITE)
- (D) TEMP EPOXY PVT MK LINE 5 (10' DASH 30' SKIP, WHITE)
- (E) TEMP EPOXY PVT MK LINE 8 (SOLID WHITE)
- (F) TEMP EPOXY PVT MK LINE 12 (WHITE CHEVRONS @ 45°, 30' SPACING) (TYP)
- (G) TEMP CONC BARRIER @ 12:1 ON TAPERS UNLESS OTHERWISE NOTED
- (H) IMPACT ATTENUATOR, TEMPORARY, TEST LEVEL 3 (SEE SCHEDULE)
- (I) TYPE II BARRICADE OR DRUMS WITH STEADY BURN MONODIRECTIONAL LIGHT @ 50' C-C (TYP) ON TAPERS AND RAMP @ 100' C-C (TYP) ON TANGENTS
- (J) DIRECTIONAL INDICATOR BARRICADE WITH STEADY BURN MONODIRECTIONAL LIGHT @ 50' C-C
- (K) REL TEMP CONC BARRIER @ 12:1 ON TAPERS UNLESS OTHERWISE NOTED
- (L) IMPACT ATTENUATOR, RELOCATE (SEE SCHEDULE)
- (M) TEMP EPOXY PVT MK LINE 8 (3' DASH 9' SKIP, WHITE)

**LEGEND:**

- WORK ZONE
- TEMPORARY CONCRETE BARRIER
- TEMPORARY IMPACT ATTENUATOR
- TEMPORARY SOIL RETENTION SYSTEM OR BRACED EXCAVATION
- DIRECTION OF TRAFFIC FLOW
- TYPE III BARRICADE
- TYPE II BARRICADE OR DRUMS WITH STEADY BURN MONODIRECTIONAL LIGHT
- DIRECTIONAL INDICATOR BARRICADE WITH STEADY BURN MONODIRECTIONAL SIGN
- ARROW BOARD
- FROM CONTRACT 60X77 TO REMAIN
- FROM CONTRACT 60X76 TO REMAIN
- FROM CONTRACT 60X78 TO REMAIN
- FROM CONTRACT 60X78 TO REMAIN
- FROM CONTRACT 60X61 TO REMAIN

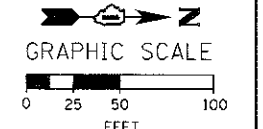
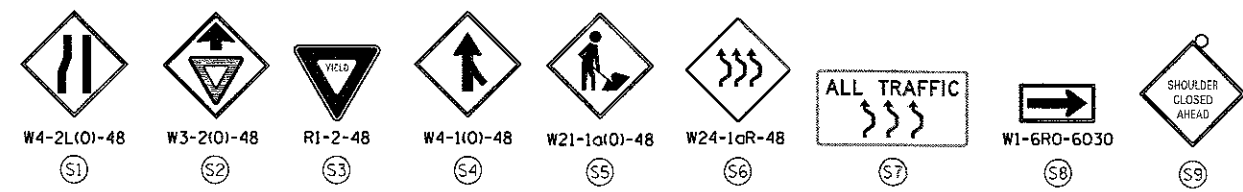
MATCH LINE STA 203+00 EX NB I-90/94 SEE SHEET NO. 37

MATCH LINE STA 11+00 EX NB I-90/94 SEE SHEET NO. 33



**NOTES:**

- ALL TRAVEL LANES ON NB AND SB I-90/94 AND STAGING SIGNS SHALL BE MAINTAINED AS PER CONTRACTS 60X78.



D162078-Sht-Staging-ML-1-09	DESIGNED - OPS	REVISED - 09/01/2017
USER NAME = Chua	DRAWN - PHP	REVISED -
PLOT SCALE = 100.0000' / in.	CHECKED - MJE	REVISED -
PLOT DATE = 9/1/2017	DATE - 5/4/2017	REVISED -

STATE OF ILLINOIS  
DEPARTMENT OF TRANSPORTATION

SUGGESTED STAGES OF CONSTRUCTION AND TRAFFIC CONTROL PLAN  
MAINLINE STAGING 1

SCALE: 1" = 50' SHEET 9 OF 9 SHEETS STA. 203+00 TO STA. 11+00

F.A.I. RTE. 90/94/290	SECTION 2016-066T	COUNTY COOK	TOTAL SHEETS 83	SHEET NO. 38
CONTRACT NO. 62D78			ILLINOIS FED. AID PROJECT	

REV 9-6-17

**TRAFFIC CONTROL LAYOUT INFORMATION**

POINT		STATION	OFFSET	LT/RT	BASELINE
1		1847+82.45	0.0'	-	P-CIR-NW
2	PT	1846+35.27	1.8'	LT	P-CIR-NW
3	PC	1844+74.54	4.4'	LT	P-CIR-NW
4		1845+32.72	10.1'	RT	P-CIR-NW
5		1844+24.16	9.7'	RT	P-CIR-NW
6		1843+74.35	14.0'	RT	P-CIR-NW
7		1841+74.59	5.7'	LT	P-CIR-NW
8		1841+24.75	9.7'	LT	P-CIR-NW

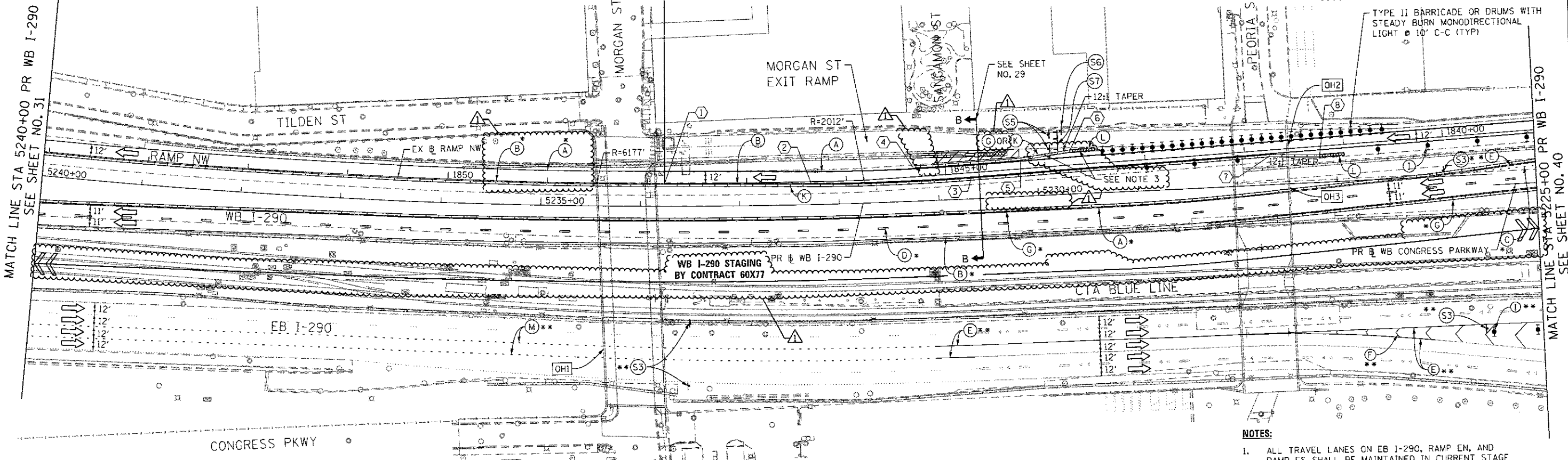
○ POINT LOCATION

**PROPOSED TEMP PAVEMENT MARKINGS AND TRAFFIC CONTROL DEVICES**

- (A) TEMP EPOXY PVT MK LINE 4 (SOLID WHITE)
- (B) TEMP EPOXY PVT MK LINE 4 (SOLID YELLOW)
- (C) TEMP EPOXY PVT MK LINE 4 (2' DASH 6' SKIP, WHITE)
- (D) TEMP EPOXY PVT MK LINE 5 (10' DASH 30' SKIP, WHITE)
- (E) TEMP EPOXY PVT MK LINE 8 (SOLID WHITE)
- (F) TEMP EPOXY PVT MK LINE 12 (WHITE CHEVRONS @ 45°, 30' SPACING) (TYP)
- (G) TEMP CONC BARRIER @ 12:1 ON TAPERS UNLESS OTHERWISE NOTED
- (H) IMPACT ATTENUATOR, TEMPORARY, TEST LEVEL 3 (SEE SCHEDULE)
- (I) TYPE II BARRICADE OR DRUMS WITH STEADY BURN MONODIRECTIONAL LIGHT @ 50' C-C (TYP) ON TAPERS AND RAMP
- (J) DIRECTIONAL INDICATOR BARRICADE WITH STEADY BURN MONODIRECTIONAL LIGHT @ 50' C-C
- (K) REL TEMP CONC BARRIER @ 12:1 ON TAPERS UNLESS OTHERWISE NOTED
- (L) IMPACT ATTENUATOR, RELOCATE (SEE SCHEDULE)
- (M) TEMP EPOXY PVT MK LINE 8 (3' DASH 9' SKIP, WHITE)

**LEGEND:**

- WORK ZONE
- TEMPORARY CONCRETE BARRIER
- TEMPORARY IMPACT ATTENUATOR
- TEMPORARY SOIL RETENTION SYSTEM OR BRACED EXCAVATION
- DIRECTION OF TRAFFIC FLOW
- TYPE III BARRICADE
- TYPE II BARRICADE OR DRUMS WITH STEADY BURN MONODIRECTIONAL LIGHT
- DIRECTIONAL INDICATOR BARRICADE WITH STEADY BURN MONODIRECTIONAL SIGN
- ARROW BOARD
- FROM CONTRACT 60X77 TO REMAIN
- FROM CONTRACT 60X76 TO REMAIN
- FROM CONTRACT 60X78 TO REMAIN
- FROM CONTRACT 60X28 TO REMAIN
- FROM CONTRACT 60X61 TO REMAIN

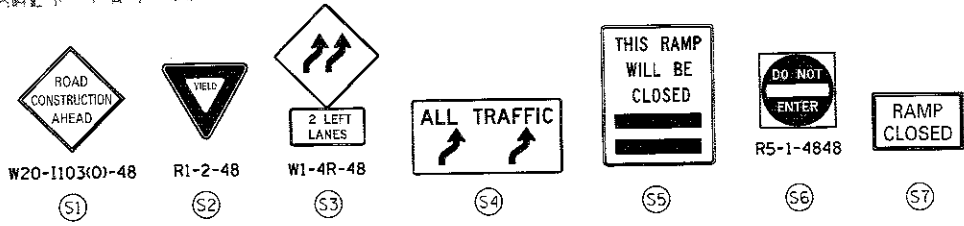


MATCH LINE STA 5240+00 PR WB I-290 SEE SHEET NO. 31

MATCH LINE STA 5225+00 PR WB I-290 SEE SHEET NO. 40

**NOTES:**

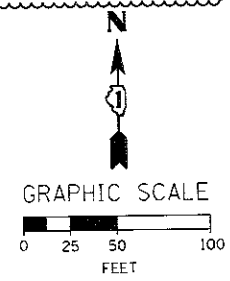
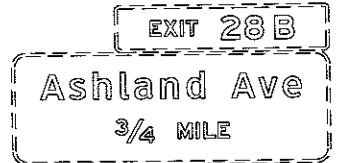
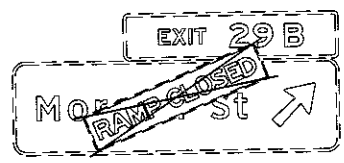
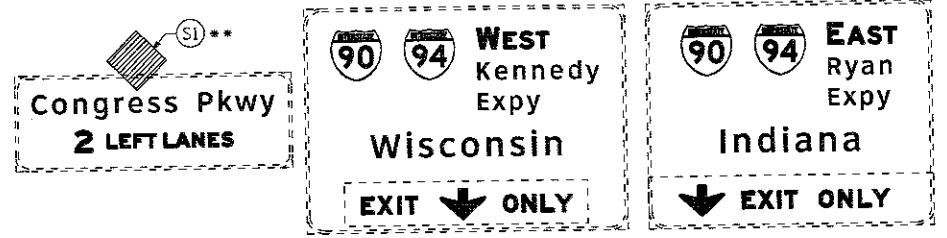
- ALL TRAVEL LANES ON EB I-290, RAMP EN, AND RAMP ES SHALL BE MAINTAINED IN CURRENT STAGE AS PER CONTRACT 60X76 AND CONFORM TO ALL APPLICABLE IDOT DISTRICT 1 STANDARDS.
- ALL TRAVEL LANES ON WB I-290 AND RAMP SW SHALL BE MAINTAINED IN CURRENT STAGE AS PER CONTRACT 60X77 AND CONFORM TO ALL APPLICABLE IDOT DISTRICT 1 STANDARDS.
- REMOVE TEMPORARY CONCRETE BARRIER AND REMOVE IMPACT ATTENUATORS, NO SALVAGE (SEE SCHEDULE) UPON COMPLETION OF CONCRETE BARRIER CONSTRUCTION AND INSTALLATION OF IMPACT ATTENUATORS LOCATED IN THE GORE AREA OF RAMP NW AND MORGAN STREET EXIT RAMP.



OH1 EXISTING OVERHEAD SIGNS TO REMAIN

OH2 EXISTING OVERHEAD SIGNS TO REMAIN

OH3 EXISTING OVERHEAD SIGNS TO REMAIN



	D162078-Shr-Staging-ML-15-03	DESIGNED - PHP	REVISED - 09/01/2017
	USER NAME = Chiu	DRAWN - PHP	REVISED -
	PLOT SCALE = 100.0000' / 1"	CHECKED - MJE	REVISED -
	PLOT DATE = 9/1/2017	DATE - 5/4/2017	REVISED -

STATE OF ILLINOIS  
DEPARTMENT OF TRANSPORTATION

**SUGGESTED STAGES OF CONSTRUCTION AND TRAFFIC CONTROL PLAN**

MAINLINE STAGING 1 - SUBSTAGE

SCALE: 1" = 50' SHEET 1 OF 2 SHEETS STA. 5255+00 TO STA. 5240+00

F&I RTE.	SECTION	COUNTY	TOTAL SHEETS	SHEET NO.
90/94/290	2016-066T	COOK	83	39
				CONTRACT NO. 62D78
ILLINOIS FED. AID PROJECT				

REV 9-6-17

**DRAINAGE AND UTILITIES GENERAL NOTES**

- PRIOR TO BEGINNING CONSTRUCTION, THE CONTRACTOR MUST FIELD VERIFY HORIZONTAL AND VERTICAL POSITION OF ALL EXISTING UTILITIES.
- SEE ITS PLANS FOR ADDITIONAL UTILITY INFORMATION.
- IN PREVIOUS CONTRACT 60X61, A PRECAST PLUG WAS PLACED AT EACH END OF THE 78" STORM SEWER PIPES. A PRECAST BLOCK WAS PLACED ADJACENT TO THE END OF THE EAST PIPE AT APPROXIMATE STATION 1842+48 AND STEEL PLATE WAS PLACED AT THE END OF THE WEST PIPE AT APPROXIMATE STATION 1845+58. THIS WORK FOR THE REMOVAL OF THE EXISTING PRECAST PLUGS, PRECAST BLOCK AND STEEL PLATE SHALL BE PAID FOR UNDER REMOVE TEMPORARY BULKHEAD. SEE SPECIAL PROVISIONS.
- THE EXISTING UTILITIES SHOWN ON THE DRAINAGE AND UTILITY PROFILE ARE APPROXIMATE LOCATIONS. THE CONTRACTOR SHALL VERIFY THE LOCATIONS AND DEPTHS OF THESE EXISTING UTILITIES.
- THE CONTRACTOR SHALL VERIFY ALL DIMENSIONS AND CONDITIONS IN THE FIELD PRIOR TO CONSTRUCTION AND ORDERING OF MATERIALS.
- DRAINAGE GRADES SHALL BE VERIFIED IN FIELD PRIOR TO INSTALLATION OF DRAINAGE ITEMS.
- THE CONTRACTOR IS RESPONSIBLE FOR MAINTAINING POSITIVE DRAINAGE ON JOB SITE DURING CONSTRUCTION.
- THE CONTRACTOR SHALL PROVIDE A TEMPORARY PUMPING SYSTEM TO DIVERT WATER FLOW WITHIN THE THE EXISTING 78" STORM SEWER UNTIL ALL SEWER CONNECTIONS ARE COMPLETE. THE EXISTING COLLECTOR STORM SEWER SYSTEMS PREVIOUSLY INSTALLED IN CONTRACT 60X61 ARE DIRECTLY CONNECTED TO THE UPSTREAM PORTION OF THE EXISTING 78" STORM SEWER AND ACTIVELY RECEIVING RUNOFF. SEE TEMPORARY PUMPING SYSTEM SPECIAL PROVISION.
- SEE STORM SEWERS SPECIAL PROVISION FOR ADDITIONAL CONSIDERATIONS FOR THE INSTALLATION P-MD01.
- WHEN THE INSTALLATION OF THE 78" STORM SEWER (MAIN DRAIN) IS COMPLETED, THE CONTRACTOR SHALL CLEAN THE EXISTING DRAINAGE STRUCTURES AND THE FOLLOWING PARTS OF THE SYSTEM:
  - 78" STORM SEWER FROM STATION 1861+73 TO STATION 1842+38
  - 84" STORM SEWER FROM STATION 1842+38 TO STATION 1833+65
  - 78" STORM SEWER FROM STATION 1833+65 TO STATION 1832+46
  - 42" STORM SEWER CONNECTION FROM STATION 1832+46 TO STATION 1832+11.
 REFER TO THE PROVIDED RECORD DRAWINGS FOR INFORMATION ON THE EXISTING DRAINAGE STRUCTURES AND STORM SEWER SYSTEM ELEMENTS TO BE CLEANED. THE RECORD DRAWINGS MAY NOT REFLECT AS-BUILT CONDITIONS. PRIOR TO CONSTRUCTION, THE ENGINEER WILL PROVIDE AS-BUILT INFORMATION TO THE CONTRACTOR.
- THE CONTRACTOR SHALL AVOID ALLOWING SURFACE RUNOFF WITHIN THE WORK ZONE TO FLOW ONTO ADJACENT TRAFFIC LANES. ALL SURFACE RUNOFF AND WATER PUMPED FROM EXCAVATIONS SHALL BE DIRECTED INTO AN EXISTING AND ACTIVE DRAINAGE STRUCTURE WITHOUT IMPEDING TRAFFIC OR ADJACENT CONTRACTORS.
- EXCEPT WHERE DESIGNATED OTHERWISE, THE LOCATIONS AND/OR DEPTHS OF UNDERGROUND UTILITIES SHOWN HAVE BEEN TAKEN FROM OFFICE RECORD INFORMATION FURNISHED BY THE UTILITY OWNERS AND THE SUE SURVEYS. ALL UNDERGROUND UTILITIES MUST BE CONSIDERED APPROXIMATE.
- THE CONTRACTOR SHALL BE RESPONSIBLE FOR THE PROTECTION OF ALL UNDERGROUND OR SURFACE UTILITIES EVEN THOUGH THEY MAY NOT BE SHOWN IN THE PLANS. ANY UTILITY THAT IS DAMAGED DURING CONSTRUCTION SHALL BE REPAIRED OR REPLACED TO THE SATISFACTION OF THE ENGINEER. THIS WORK WILL BE AT THE CONTRACTORS EXPENSE.
- THE CONTRACTOR SHALL COORDINATE WORK WITH RAILROADS AND UTILITIES IN ADVANCE OF WORKING IN THE VICINITY OF THEIR FACILITIES AND ALLOW SUFFICIENT TIME FOR THEM TO PERFORM ADJUSTMENTS TO THEIR FACILITIES IN ACCORDANCE WITH THE CONTRACTOR'S SCHEDULE. THIS WORK WILL BE AT THE CONTRACTOR'S EXPENSE.
- FOR STORM SEWER CONSTRUCTED UNDER THE ROADWAY, BACKFILLING METHODS TWO AND THREE AUTHORIZED UNDER THE PROVISIONS OF ARTICLE 550.07 OF THE STANDARD SPECIFICATIONS WILL NOT BE ALLOWED.
- ABANDONED UNDERGROUND UTILITIES THAT CONFLICT WITH CONSTRUCTION SHALL BE DISPOSED OF OUTSIDE THE LIMITS OF THE RIGHT-OF-WAY ACCORDING TO ART. 202.03 OF THE STANDARD SPECIFICATIONS AND AS DIRECTED BY THE ENGINEER.
- ANY DAMAGES TO THE CONDUITS OR PIPES CAUSED BY THE CONTRACTOR'S OPERATIONS SHALL BE REPLACED OR REPAIRED BY THE CONTRACTOR AT HIS/HER EXPENSE.
- THE CONTRACTOR MUST CALL THE IDOT ELECTRICAL MAINTENANCE CONTRACTOR TO LOCATE IDOT FACILITY CABLES.
- THE QUANTITY OF 100 FEET OF EXPLORATION TRENCH 72" DEPTH HAS BEEN INCLUDED IN THE PLANS FOR THE PURPOSE OF PHYSICALLY LOCATING ANY EXISTING UTILITY OR OBSTRUCTIONS. THE ENGINEER SHALL APPROVE THE LOCATIONS OF THE EXPLORATION TRENCH BEFORE ANY EXCAVATION MAY BEGIN.

**EXISTING DRAINAGE AND UTILITIES SCHEDULE**

STATION	OFFSET	MANHOLES TO BE ADJUSTED	REMOVING CATCH BASINS	REMOVE TEMPORARY BULKHEAD	COMMENTS
		EACH	EACH	EACH	
1842+47.80	19.17' LT			1	EX RIM EL = 577.27± PR RIM EL = 577.91±
1842+43.00	12.00' LT	1			
1844+25.99	11.67' LT		1		
1844+49.54	7.10' LT		1		
1845+57.70	17.32' LT			1	
<b>TOTALS</b>		<b>1</b>	<b>2</b>	<b>2</b>	

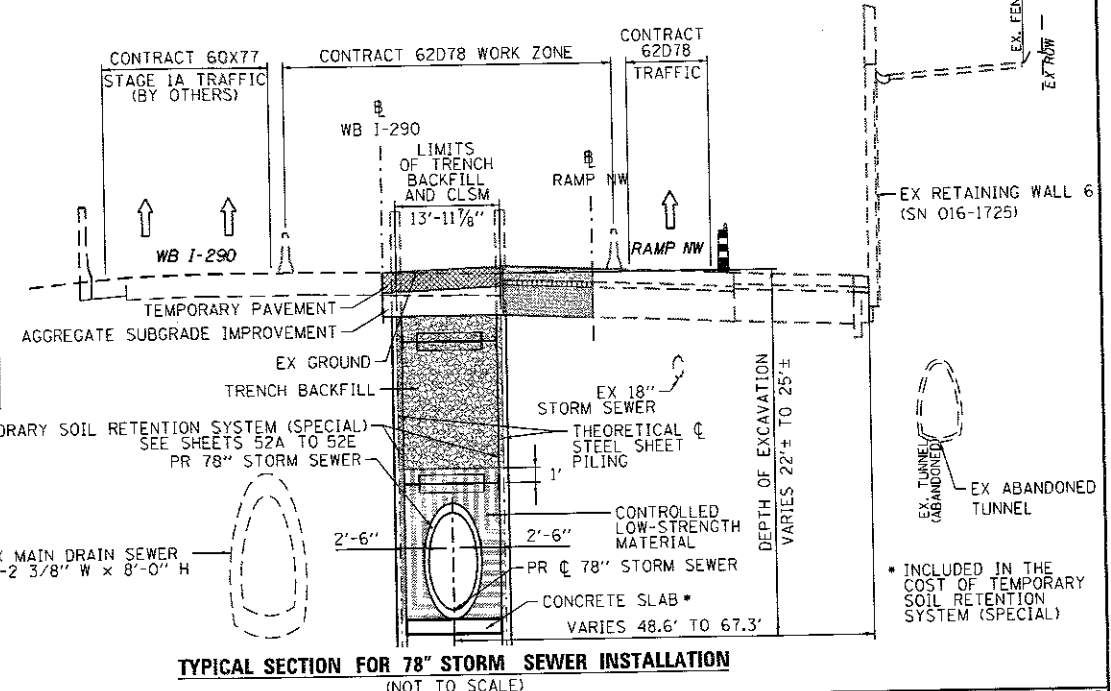
UPSTREAM STATION, OFFSET TO DOWNSTREAM STATION, OFFSET	TRENCH BACKFILL CU YD	STORM SEWER REMOVAL	STORM SEWERS TO BE CLEANED (SEE RECORD DRAWINGS)			
		12" FOOT	42" FOOT	78" FOOT	84" FOOT	
STA 1832+46, 55.5' RT TO STA 1832+11, 22.9' RT			50			
STA 1833+65, 47.8' LT TO STA 1832+46, 55.5' RT					158	
STA 1842+39, 19.0' LT TO STA 1833+65, 47.9' LT						867
STA 1844+26, 11.7' LT TO STA 1844+24, 27.9' LT	2.4	17				
STA 1844+50, 7.1' LT TO STA 1844+26, 11.7' LT	0.0	24				
STA 1848+87, 2.6' LT TO STA 1842+39, 19.0' LT					650	
STA 1852+00, 2.7' LT TO STA 1848+90, 2.6' LT					314	
STA 1861+53, 2.0' LT TO STA 1852+00, 2.7' LT					953	
STA 1861+73, 2.6' LT TO STA 1861+53, 2.0' LT					21	
<b>ROUNDED TOTALS</b>	<b>2.4</b>	<b>41</b>	<b>50</b>	<b>2096</b>	<b>867</b>	

**PROPOSED DRAINAGE AND UTILITIES SCHEDULE**

PIPE	UPSTREAM STATION	DOWNSTREAM STATION	UPSTREAM INVERT ELEVATION	DOWNSTREAM INVERT ELEVATION	PIPE SLOPE (%)	STORM SEWERS, CLASS A, TYPE 4	REINFORCED CONCRETE PIPE ELBOW	CONCRETE COLLAR	REINFORCEMENT BARS, EPOXY COATED	CONTROLLED LOW-STRENGTH MATERIAL	TRENCH BACKFILL
						FOOT	EACH	CU YD	POUND	CU YD	CU YD
<b>78" MAIN DRAIN</b>											
P-MD01	1845+57.70	1842+47.80	556.30 (EX)	555.68 (EX)	0.20%	295	2	2.2	190	1091.0	1599.7
<b>ROUNDED TOTAL</b>						<b>295</b>	<b>2</b>	<b>2.2</b>	<b>190</b>	<b>1091.0</b>	<b>1599.7</b>

**DRAINAGE STRUCTURES TO BE CLEANED**

STATION	OFFSET	DRAINAGE STRUCTURES TO BE CLEANED (SEE RECORD DRAWINGS)
		EACH
1832+46.30	55.5' RT	1
1833+65.42	47.9' LT	1
1842+38.78	19.0' LT	1
1848+86.70	2.7' LT	1
1852+00.50	2.7' LT	1
1861+52.76	2.0' LT	1
<b>TOTALS</b>		<b>6</b>



**TYPICAL SECTION FOR 78" STORM SEWER INSTALLATION (NOT TO SCALE)**

**AECOM**  
 305 EAST WACKER DRIVE, SUITE 1400  
 CHICAGO, IL 60601-3276  
 PHONE: (312) 373-7700 FAX: (312) 373-6800

DESIGNED - AFC	REVISED - 09/01/2017
DRAWN - AFC	REVISED -
CHECKED - MJE	REVISED -
DATE - 7/21/2017	REVISED -

**STATE OF ILLINOIS  
 DEPARTMENT OF TRANSPORTATION**

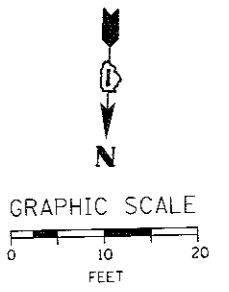
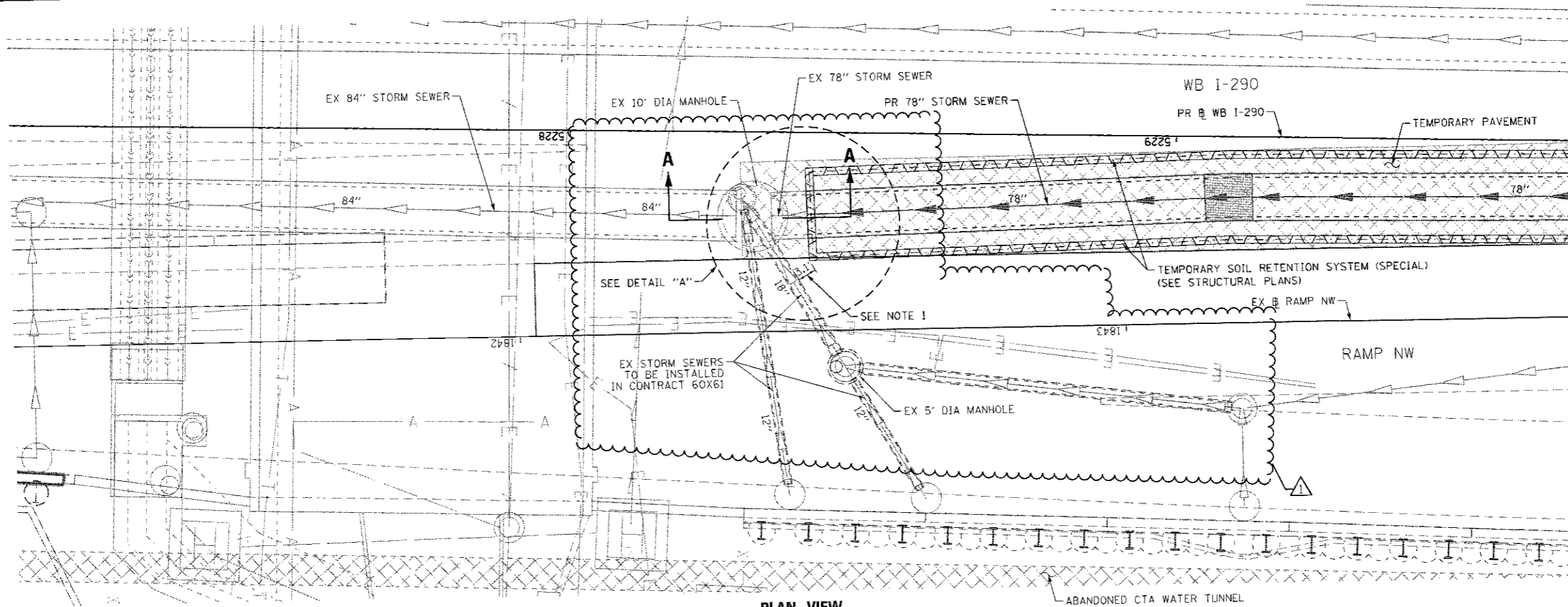
**DRAINAGE AND UTILITIES GENERAL NOTES AND SCHEDULE**  
 SCALE: NTS SHEET 1 OF 1 SHEETS STA. TO STA.

F.A.I. RTE. 90/94/290	SECTION 2016-066T	COUNTY COOK	TOTAL SHEETS 83	SHEET NO. 44
ILLINOIS FED. AID PROJECT			CONTRACT NO. 62D78	

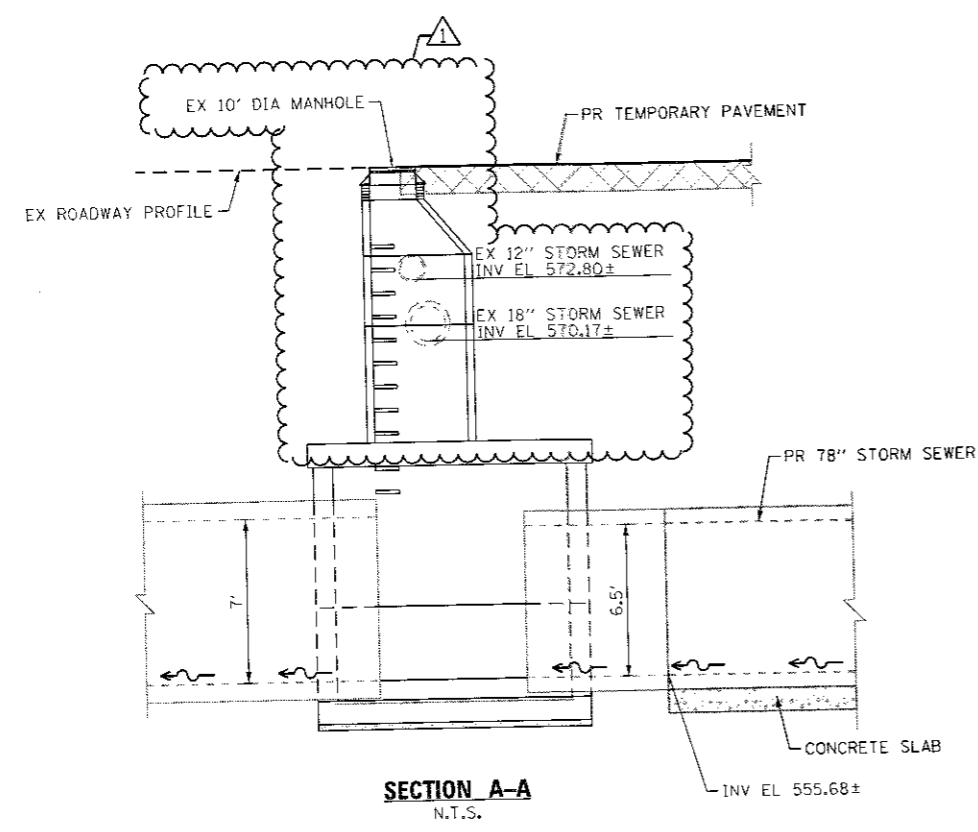
REV 9-6-17



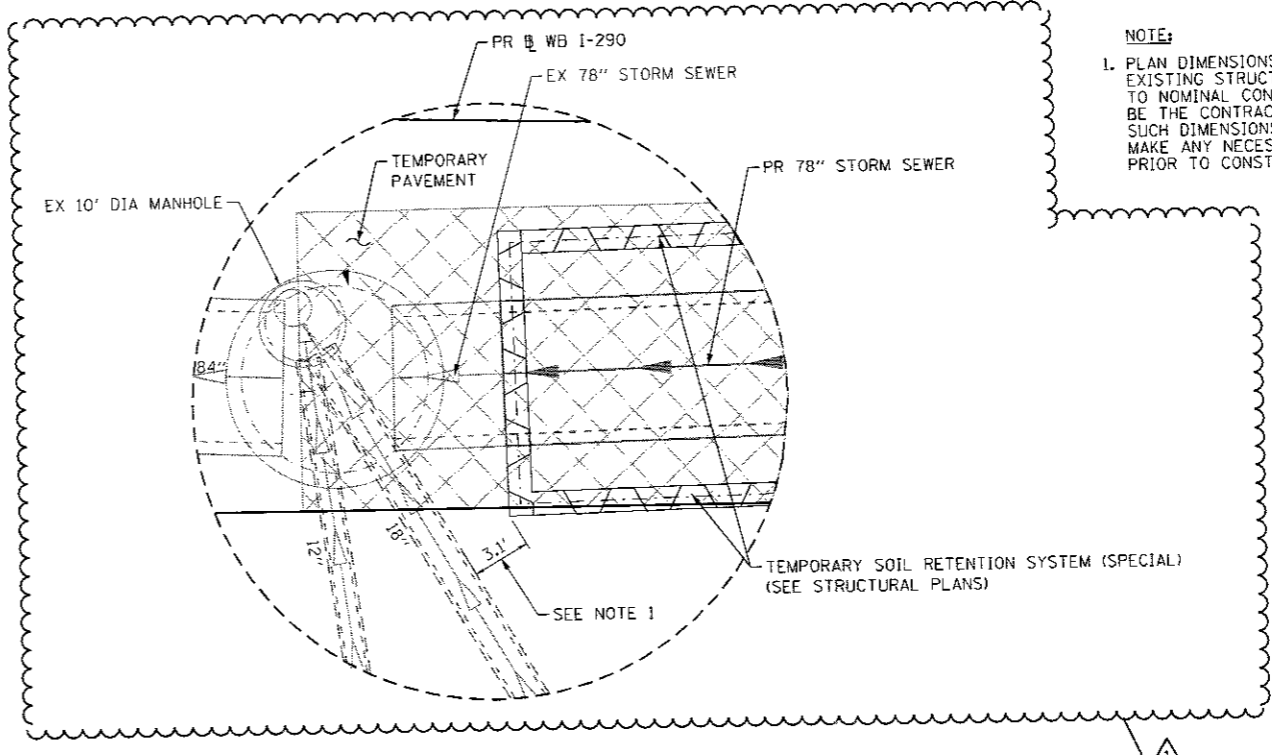
FILE PATH = P:\1161779-DRAIN\Drawings\1161779-DRAIN\Phase 1\1161779-DRAIN\Sheet\1161779-DRAIN-Detail-82.dgn  
 American\Transp\1161779-DRAIN\Phase 1\1161779-DRAIN\Sheet\1161779-DRAIN-Detail-82.dgn



**PLAN VIEW**



**SECTION A-A**  
N.T.S.



**DETAIL "A"**

**NOTE:**  
 1. PLAN DIMENSIONS AND DETAILS RELATIVE TO THE EXISTING STRUCTURES AND PIPES SHALL BE SUBJECT TO NOMINAL CONSTRUCTION VARIATIONS. IT SHALL BE THE CONTRACTOR'S RESPONSIBILITY TO VERIFY SUCH DIMENSIONS AND DETAILS IN THE FIELD AND MAKE ANY NECESSARY APPROVED ADJUSTMENTS PRIOR TO CONSTRUCTION OR ORDERING OF MATERIALS.



D162078-sht-Drain-Detail-82.dgn  
 USER NAME = ChiuA  
 PLOT SCALE = 20.0000' / 1" in.  
 PLOT DATE = 8/28/2017

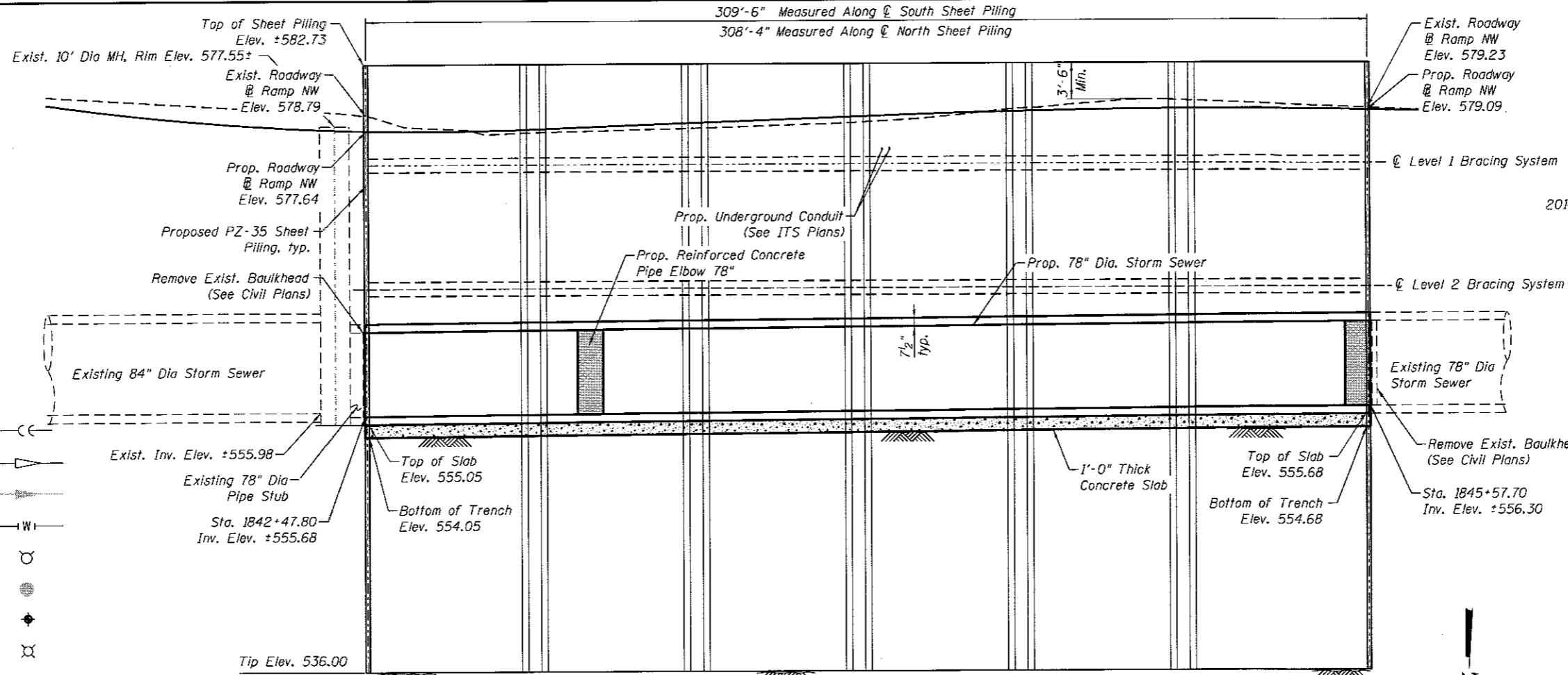
DESIGNED - AFC	REVISED - 09/01/2017
DRAWN - AFC	REVISED -
CHECKED - MJE	REVISED -
DATE - 7/21/2017	REVISED -

**STATE OF ILLINOIS**  
**DEPARTMENT OF TRANSPORTATION**

**DRAINAGE DETAILS**  
**CONNECTIONS TO EXISTING 10' DIAMETER MANHOLE**  
 SCALE: SHEET 2 OF 2 SHEETS STA. TO STA.

F.A.J. RTE.	SECTION	COUNTY	TOTAL SHEETS	SHEET NO.
90/94/290	2016-066T	COOK	83	47
ILLINOIS FED. AID PROJECT			CONTRACT NO. 62D78	

REV 9-6-17



**DESIGN STRESSES**

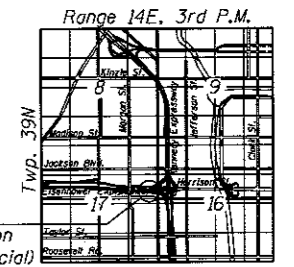
**FIELD UNITS**  
 $f'_c = 3,500$  psi (concrete)  
 $f_y = 50,000$  psi (Struct. Steel)

**DESIGN LOADING**

Max. Live Load Surcharge = 550 psf  
 Building Surcharge = 3000 psf

**DESIGN SPECIFICATIONS**

2014 AASHTO LRFD Bridge Design Specifications, 7th Edition with 2015 & 2016 Interims



**LOCATION SKETCH**

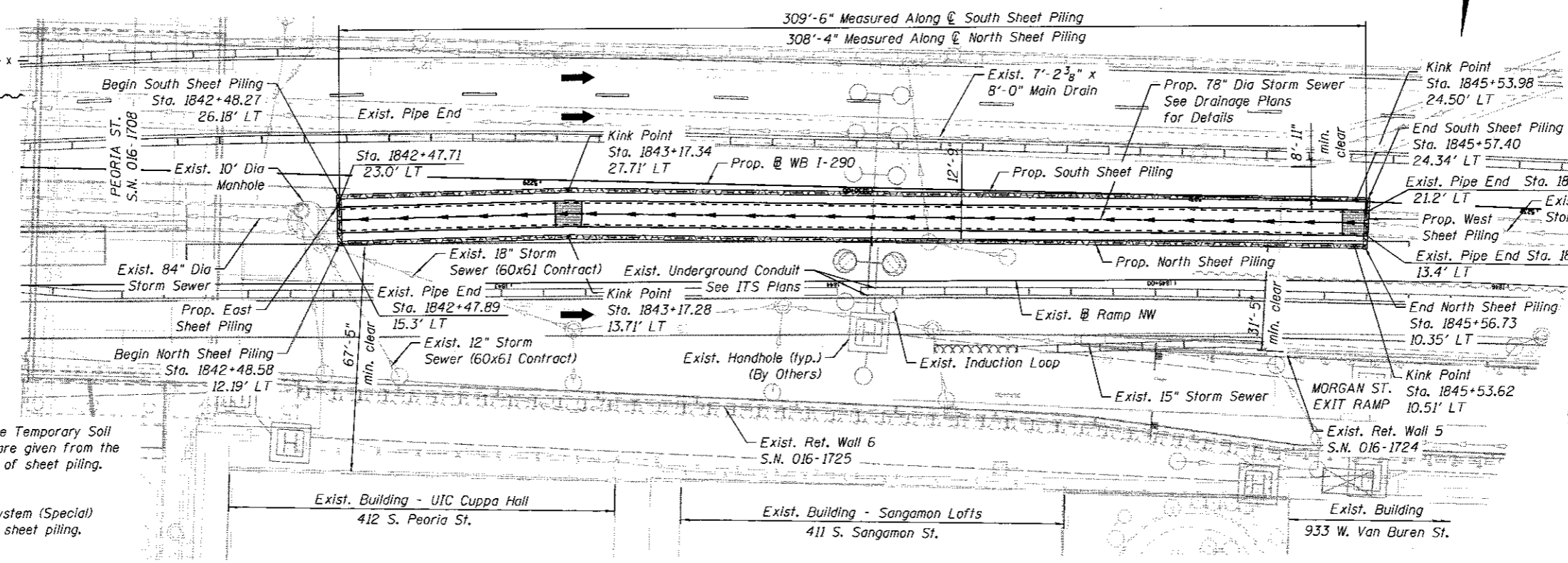


*Amish T. Bhatt*  
**AMISH T. BHATT**  
 LICENSE EXPIRES 11/30/2018  
 DATE 7/21/2017

**LEGEND:**

- Combined Sewer
- Exist. Storm Sewer
- Prop. Storm Sewer
- Water Line
- Fire Hydrant
- Prop. catchbasin
- Boring Log/Soil Test
- Light Pole
- Exist. Electric Cable
- Prop. Lighting Cable
- Fiber Optic
- Exist. Fence
- Soil Retention System

**ELEVATION**  
(Looking South)



**PLAN**

**NOTES:**

1. Stations and Offsets for the Temporary Soil Retention System (Special) are given from the Exist @ Ramp NW to the  $\text{\O}$  of sheet piling.
2. Temporary Soil Retention System (Special) length is measured along  $\text{\O}$  sheet piling.
3. For boring logs & boring location plans, see sheets 53 thru 62.

**APPROVED**  
 For Structural Adequacy Only  
*Carl Krueger*  
 Engineer of Bridges & Structures

**GENERAL PLAN AND ELEVATION  
 TEMPORARY SOIL RETENTION  
 SYSTEM (SPECIAL)  
 F.A.I. RTE. 290  
 (EISENHOWER EXPRESSWAY)  
 SECTION 2016-066T  
 COOK COUNTY**



USER NAME = vasudevana	DESIGNED - AV	REVISED <b>A 9/1/2017 MDS</b>
PLLOT SCALE = N.T.S.	CHECKED - DD	REVISED
PLLOT DATE = 7/21/2017	DRAWN - GF	REVISED
	CHECKED - ATB	REVISED

**STATE OF ILLINOIS  
 DEPARTMENT OF TRANSPORTATION**

**GENERAL PLAN AND ELEVATION  
 TEMPORARY SOIL RETENTION SYSTEM (SPECIAL)**

SHEET NO. RW-01 OF RW-05 SHEETS

F.A.I. RTE. 80/94/290	SECTION 2016-066T	COUNTY COOK	TOTAL SHEETS 83	SHEET NO. 52A
CONTRACT NO. 62D78			ILLINOIS FED. AID PROJECT	

62D78-RW01-GPE

**GENERAL NOTES**

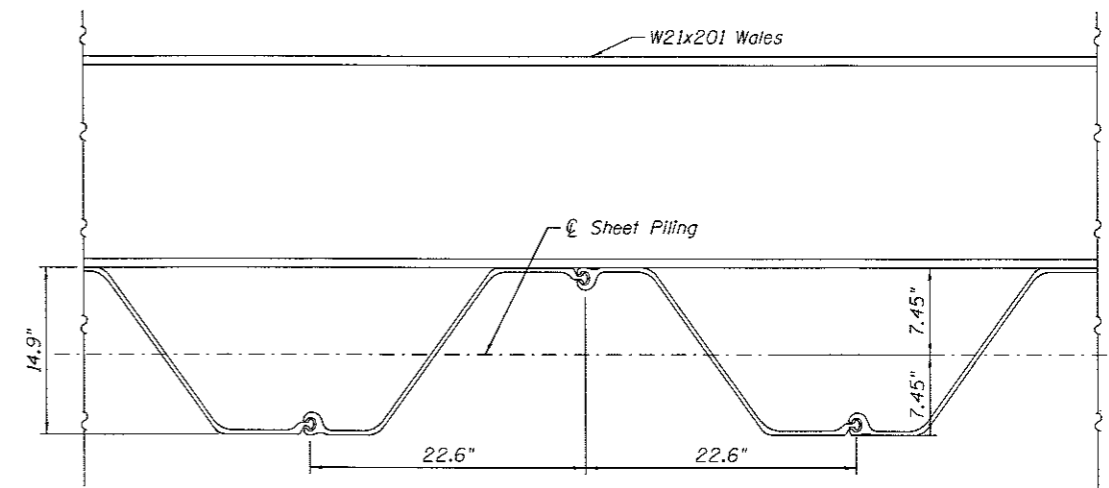
- Construction of the soil retention system shall be as per Special Provisions for Temporary Soil Retention System (Special).
- Stations and Offsets for the Temporary Soil Retention System (Special) are given from the Exist @ Ramp NW to the @ Sheet Piling.
- Temporary Soil Retention System (Special) length is measured along @ Sheet Piling.
- Unless otherwise noted, all structural shapes and steel plates shall be AASHTO M 270 Grade 50. Sheet pile shall be ASTM A 572 Grade 50 (min.).
- Approximate calculated weight of Structural Steel = 306,027 lbs. (Grade 50).
- The Contractor shall field verify location of exist. utilities and shall take all precautions to protect exist. utilities during the construction of the retention system. Any damage to the exist. utilities shall be responsibility of the Contractor.
- The Contractor shall exercise extreme caution during construction to make certain that construction activities, live load surcharge and other loads applied to the soil retention system will not have detrimental effects on the adjacent buildings, utilities and retaining wall foundations. See Special Provision for Construction Vibration Monitoring.
- Plan dimensions and details relative to existing installed pipe and drainage structures are subject to nominal construction variations. The Contractor shall field verify existing dimensions and details affecting new construction and make necessary approved adjustments prior to construction or ordering of materials. Such variations shall not be cause for additional compensation for a change in scope of the work, however, the Contractor will be paid for the quantity actually furnished at the unit price bid for the work. See special provisions for Temporary Soil Retention System (Special).
- The contractor shall provide vibration and displacement monitoring at the locations specified in the Special Provision for Construction Vibration Monitoring, to ensure that construction activities do not have detrimental effects on building foundations. No additional compensation shall be provided to the Contractor for alternative means and methods, or additional precautionary measures, required during construction activities to satisfy these requirements. See Contract Special Provisions for details.
- The contractor shall provide access, barricading and fall protection in accordance with applicable OSHA guidelines as required during the construction and as deemed necessary by the Engineer. The contractor shall ensure that the sheet piling, wales and struts are properly installed prior to entering the excavation area.
- Contractor shall ensure that soils are fully supported during all phases of work and that no voids exist between sheet piles and existing soils.
- Contractor shall install all wales and struts prior to excavation proceeding beyond 2'-0" below the centerline of each wale level.
- Limited groundwater elevation data is available in the boring logs. In addition, groundwater may also be present in granular layers. The groundwater may rise in the excavation to an elevation above the top of granular layers. The Contractor shall consider this information when selecting equipment and construction methods. The contractor will not be compensated for issues related to the groundwater elevation.
- Groundwater level shall be maintained at or below the excavation elevation at all times. If a dewatering system is necessary, and as required by the Engineer, the Contractor is responsible for developing, installing, maintaining and monitoring the dewatering system and verifying that the groundwater level behind the sheet piling has been lowered to the excavation elevation. See special provisions for Temporary Soil Retention System (Special).
- Any storage of construction equipment and/or material behind the Temporary Soil Retention System (Special) is not allowed.
- Contractor shall not support any construction equipment and/or material from any elements of Temporary Soil Retention System (Special).
- Prior to installation of the Temporary Soil Retention System (Special), the Contractor shall obtain a minimum of two test holes, maximum 6"  $\phi$ , at East and West ends of the proposed work to accurately locate the ends of the existing sewer pipe and existing bulkheads so that sheet piling can be installed precisely at the ends of the existing pipe without damaging the existing pipe. Precise installation of sheet piling is required for the connection of proposed 78"  $\phi$  pipe to the existing sewer pipe. See special provisions for Temporary Soil Retention System (Special).
- Contractor shall develop details for the opening in the sheet piling and soil support system for the proposed 78"  $\phi$  sewer pipe connection to the existing sewer pipe and removal of existing bulkheads. Contractor shall provide drawings and structural calculations, prepared and sealed by Illinois Licensed Structural Engineer, to the Engineer for review and approval. See special provisions for Temporary Soil Retention System (Special).
- Contractor is responsible for any modifications to the Temporary Soil Retention System (Special). The Contractor shall submit details of any modifications along with structural calculations, prepared and sealed by Illinois Licensed Structural Engineer, for review and approval prior to commencing any work or ordering material.
- Temporary Soil Retention System (Special) is designed to support a maximum live load surcharge of 550 psf. The Contractor is responsible for selection of equipment and means and methods such that the live load surcharge does not exceed max. specified value. Prior to commencing the construction work, Contractor shall submit detailed construction procedures and intended equipment for Engineer's review and approval. Such approval will not relieve Contractor's responsibility for successful and safe execution of the work. Finding suitable equipment and procedures shall not be paid separately but shall be considered included with Temporary Soil Retention System (Special).
- Sheet piling shall be installed without the use of impact-type pile drivers. The proposed equipment and procedures used for the installation shall be submitted to the Engineer for approval prior to their use. If vibratory equipment is utilized, the Contractor shall also submit documentation regarding the operating noise levels and operating vibration characteristics of the equipment proposed. The approval of the equipment and procedure by the Engineer does not guarantee the performance in the field of the equipment will be acceptable. If in the judgment of the Engineer, the noise and/or vibration effects exceed established requirements, then the Contractor must halt production and find a remedy suitable to the Engineer. Threshold values for vibration monitoring are included in the special provision "CONSTRUCTION VIBRATION MONITORING". The costs incurred for finding suitable equipment and procedures shall be the responsibility of the Contractor at no additional cost to the Department.
- For boring logs and boring location plans see sheets 53 thru. 62.

**TOTAL BILL OF MATERIAL**

Description	Unit	Total
Temporary Soil Retention System (Special)	Sq. Ft.	16,146

**INDEX OF SHEETS**

- RW-01 General Plan and Elevation
- RW-02 General Notes, Total Bill of Materials and Index of Sheets
- RW-03 Soil Retention System Layout
- RW-04 Typical Sections
- RW-05 Details



**PZ-35 TYPICAL SECTION**

**CONSTRUCTION SEQUENCE**

- Locate all underground utilities and structures. Relocate and/or protect utilities as required by the contract drawings and specifications.
- Install sheet piling to the designed tip elevation shown in the plans.
- Excavate to install Level 1 Bracing system. Maximum depth of excavation shall be 2'-0" below the @ Level 1 Bracing system.
- Install Level 1 Bracing system (wales and struts).
- Excavate to install Level 2 Bracing system. Maximum depth of excavation shall be 2'-0" below the @ Level 2 Bracing system.
- Install Level 2 Bracing system (wales and struts).
- Excavate to the bottom of trench elevation.
- Construct 1'-0" thick unreinforced concrete slab between inside faces of sheet piling.
- After the concrete slab has achieved its design strength, cut openings in sheet piling as per approved design and procedures for the proposed 78"  $\phi$  pipe connection to the existing sewer pipe.
- Install proposed 78"  $\phi$  sewer as per plans and special provisions.
- Install CLSM backfill within the entire length of trench as per plans and special provisions. CLSM backfill shall be from top of concrete slab elevation to 1'-0" above the Level 2 Bracing system elevation. Sheet pile, wales and struts shall remain in place.
- Complete remaining backfill operations within the entire trench with trench backfill as per plans and special provisions. Sheet pile, wales and struts shall remain in place.

13. Cut top portion of sheet piling at elevations shown on the Civil plans.

62D78-RW02-GenNotesIndex



USER NAME = vsudevana	DESIGNED - AV	REVISED $\Delta$ 09/01/2017 A.T.B.
PLOT SCALE = N.T.S.	CHECKED - DD	REVISED
PLOT DATE = 8/29/2017	DRAWN - AV	REVISED
	CHECKED - ATB	REVISED

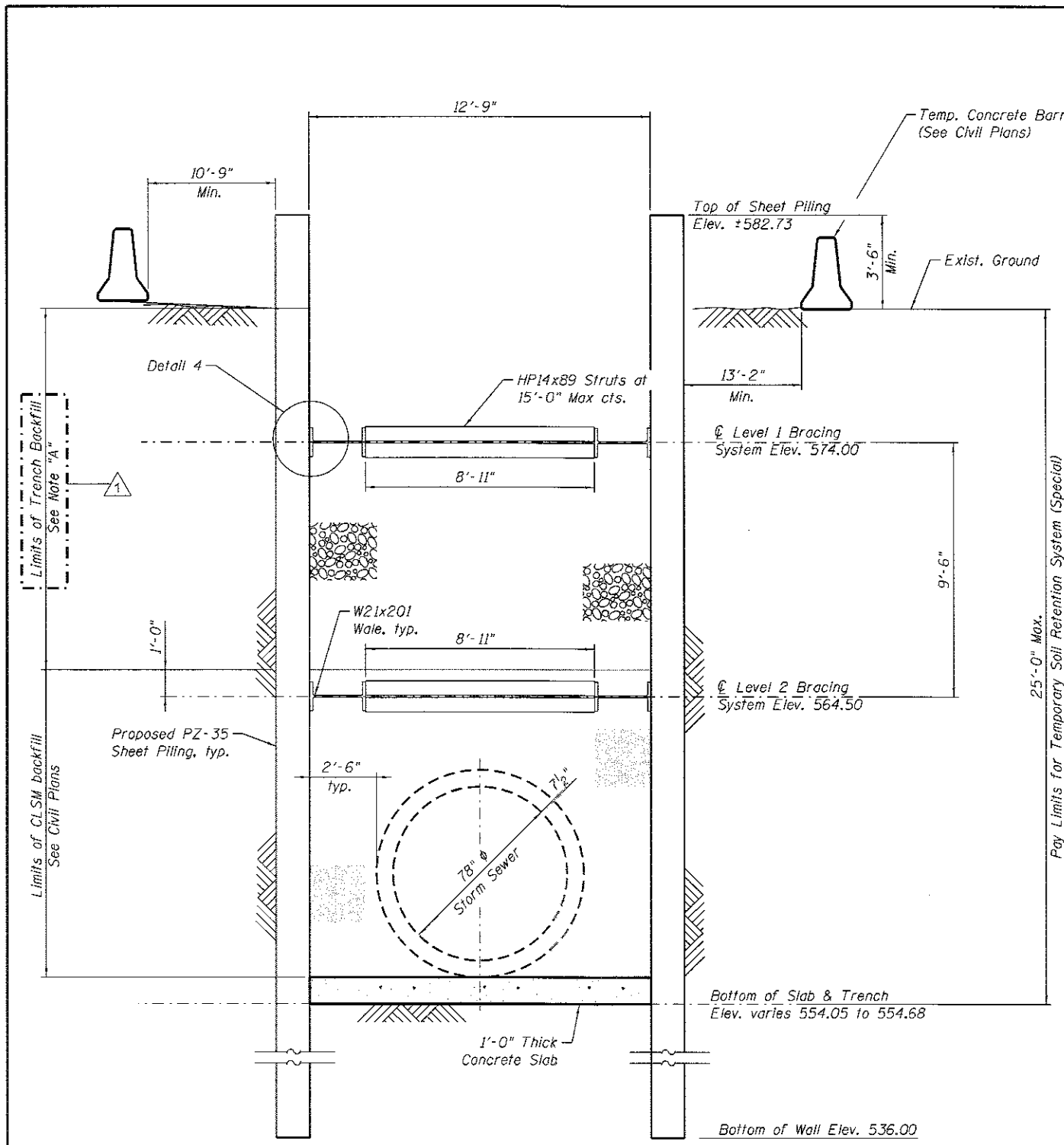
**STATE OF ILLINOIS  
DEPARTMENT OF TRANSPORTATION**

**GENERAL NOTES, TOTAL BILL OF MATERIALS AND INDEX OF SHEETS  
TEMPORARY SOIL RETENTION SYSTEM (SPECIAL)**

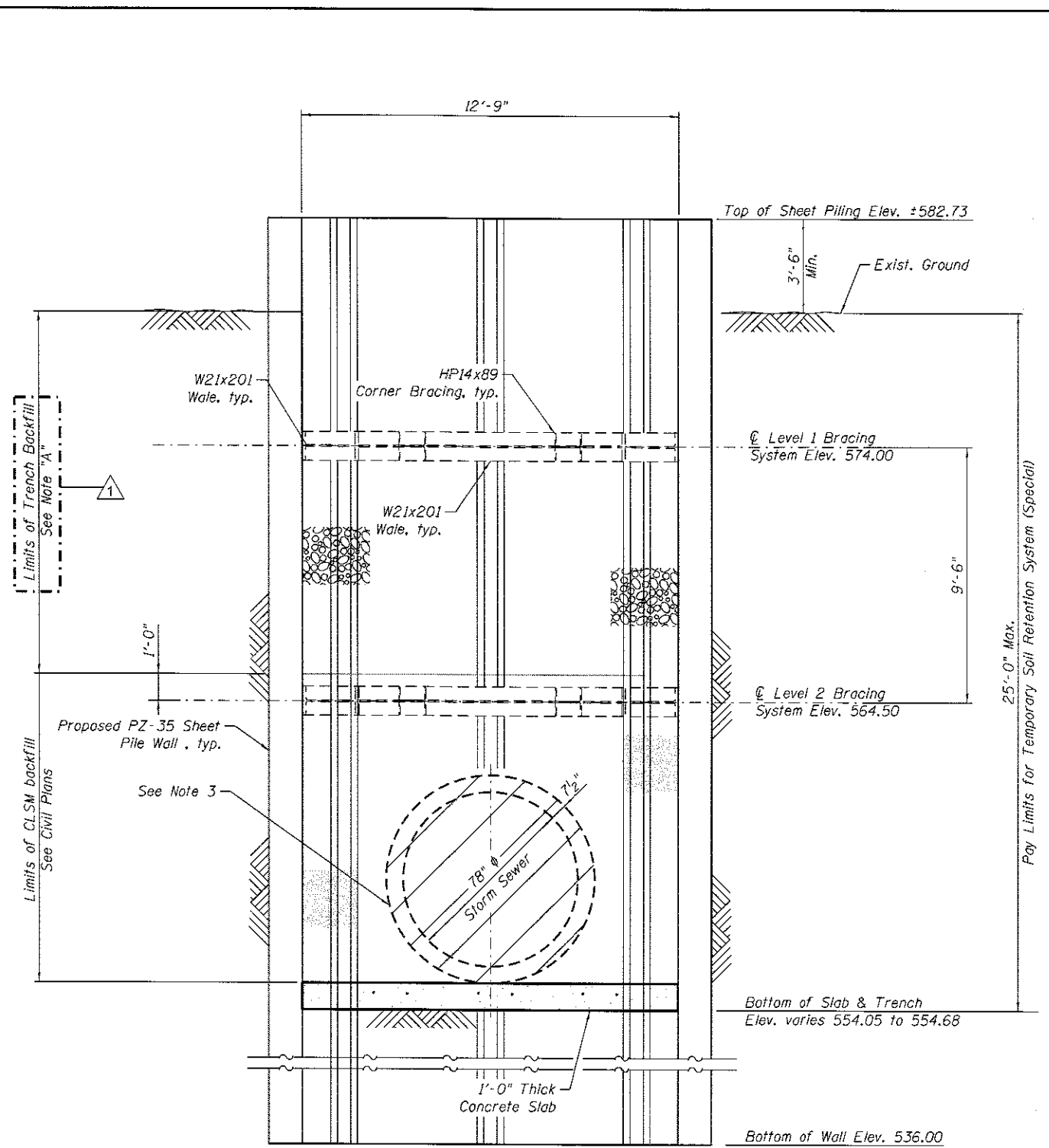
SHEET NO. RW-02 OF RW-05 SHEETS

F.A.I. RTE.	SECTION	COUNTY	TOTAL SHEETS	SHEET NO.
90/94/290	2016-066T	COOK	83	52B
CONTRACT NO. 62D78			ILLINOIS FED. AID PROJECT	

$\Delta$  REV 9-6-17



**SECTION A-A**  
(Looking East)



**SECTION B-B**

**NOTE "A":**  
The Trench Backfill limits and cut line for the sheet piling extend to the bottom of the aggregate subgrade improvement. See Typical Section Sheet 10 and Cross Section Sheets 78 thru 82.

**NOTES:**

1. See sheet RW-05 for Detail-4.
2. See sheet RW-02 for General notes and Construction sequence.
3. Contractor shall develop details for the opening in the sheet piling and soil support system for the proposed 78"  $\phi$  sewer pipe connection to the existing sewer pipe. Contractor shall provide drawings and structural calculations, prepared and sealed by Illinois Licensed Structural Engineer, to the Engineer for review and approval. See special provisions for Temporary Soil Retention System (Special).

62078-RW04-TypSect

<b>AECOM</b>	USER NAME = vasudevana	DESIGNED - AV	REVISED $\Delta$ 09/01/2017 A.T.B.
	PLOT SCALE = N.T.S.	CHECKED - DD	REVISED
	PLOT DATE = 8/29/2017	DRAWN - AV	REVISED
		CHECKED - ATB	REVISED

**STATE OF ILLINOIS  
DEPARTMENT OF TRANSPORTATION**

**SECTIONS  
TEMPORARY SOIL RETENTION SYSTEM (SPECIAL)**

F.A.I. RTE.	SECTION	COUNTY	TOTAL SHEETS	SHEET NO.
90/94/290	2016-066T	COOK	83	520
CONTRACT NO. 62D78				
ILLINOIS FED. AID PROJECT				

$\Delta$  REV 9-6-17









