

STATE OF ILLINOIS
DEPARTMENT OF TRANSPORTATION

F.A.I. RTE.	SECTION	COUNTY	TOTAL SHEETS	SHEET NO.
80	(50-4)SLP	LASALLE	7	1
		ILLINOIS	CONTRACT NO. 66H51	

INDEX OF SHEETS

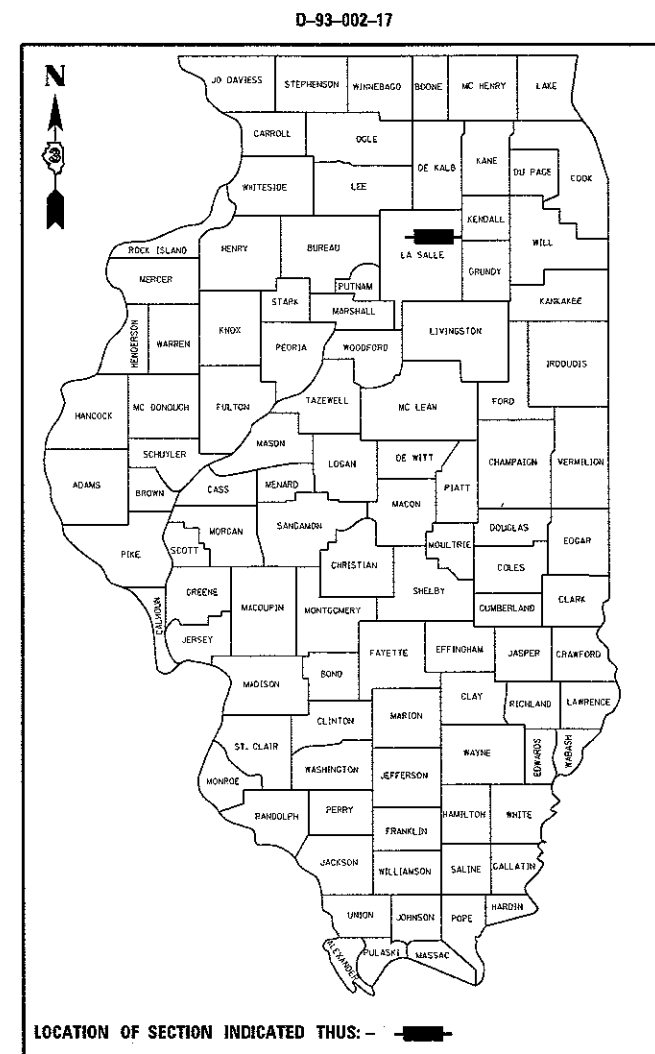
1. COVER SHEET
2. GENERAL NOTES
3. SUMMARY OF QUANTITIES
4. TYPICAL SECTION
5. TRAFFIC CONTROL AND PROTECTION, STANDARD 701400 (SPECIAL)
6. SITE PLAN
7. SITE PLAN DETAILS

STANDARDS

- | | |
|-----------|--------------------------------------------------------------------------------|
| 000001-06 | STANDARD SYMBOLS, ABBREVIATIONS AND PATTERNS |
| 001006 | DECIMAL OF AN INCH AND OF A FOOT |
| 630001-11 | STEEL PLATE BEAM GUARDRAIL |
| 701101-05 | OFF-ROAD OPERATIONS, MULTILANE, 15' (4.5 m) TO 24' (600 mm) FROM PAVEMENT EDGE |
| 701106-02 | OFF-ROAD OPERATIONS, MULTILANE, MORE THAN 15' (4.5 m) AWAY |
| 701401-10 | LANE CLOSURE, FREEWAY/EXPRESSWAY |
| 701428-01 | TRAFFIC CONTROL, SETUP AND REMOVAL, FREEWAY/EXPRESSWAY |
| 701901-06 | TRAFFIC CONTROL DEVICES |

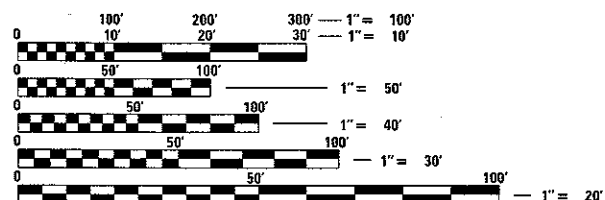
PROPOSED
HIGHWAY PLANS

F.A.I. ROUTE 80 (I-80)
SECTION (50-4)SLP
EROSION REPAIR
LASALLE COUNTY
C-93-091-17



PROJECT LOCATION

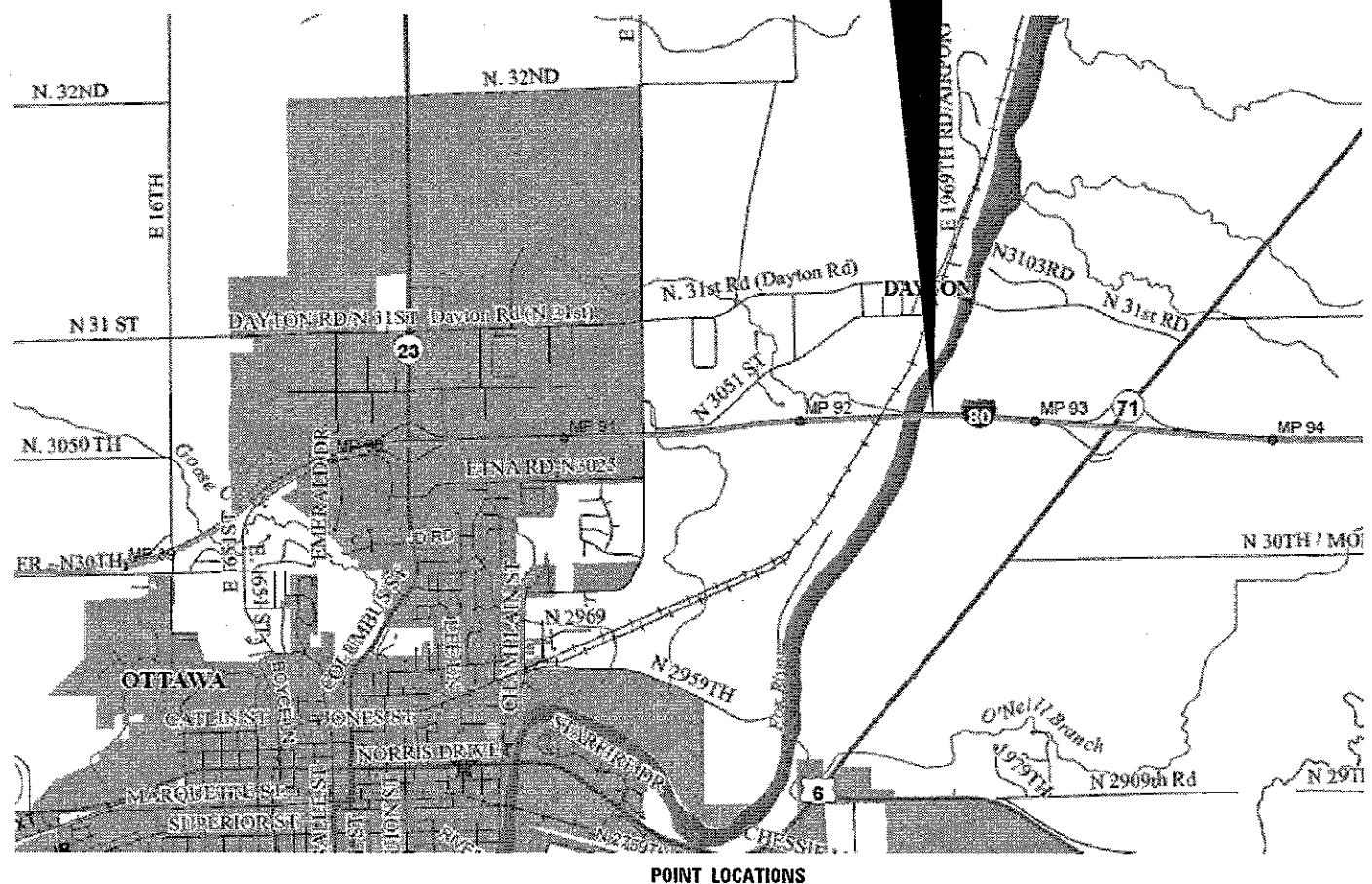
FAI 80 EASTBOUND
APPROXIMATELY 1200' EAST OF SN 050-0232
(FOX RIVER BRIDGE)
AT STATIONS 602+90 AND STATION 606+/-00



FULL SIZE PLANS HAVE BEEN PREPARED USING STANDARD ENGINEERING SCALES. REDUCED SIZED PLANS WILL NOT CONFORM TO STANDARD SCALES. IN MAKING MEASUREMENTS ON REDUCED PLANS, THE ABOVE SCALES MAY BE USED.

J.U.L.I.E.
JOINT UTILITY LOCATION INFORMATION FOR EXCAVATION
1-800-892-0123
OR 811

PROJECT ENGINEER: JOE KANNEL P.E.
UNIT CHIEF: RON WOODSHANK
DISTRICT 3 NO. (815) 434-6131
CONTRACT NO. 66H51



FUNCTIONAL CLASSIFICATION
RURAL - INTERSTATE
F.A.I. ROUTE 80 (I-80)
2015 ADT 29500
P.V. 61.9% S.U. 4.9% M.U. 33.2

STATE OF ILLINOIS
DEPARTMENT OF TRANSPORTATION

SUBMITTED July 11 2017

[Signature]
REGIONAL ENGINEER

Aug 18 2017
[Signature]
ENGINEER OF DESIGN AND ENVIRONMENT

Aug 18 2017
[Signature]
DIRECTOR OF PROGRAM DEVELOPMENT

PRINTED BY THE AUTHORITY
OF THE STATE OF ILLINOIS

REV

GENERAL NOTES

SEEDING WILL NOT BE PERMITTED AT ANY TIME WHEN THE GROUND IS FROZEN, WET, OR IN AN UNTILLABLE CONDITION. LOCATIONS TO BE SEEDED WILL BE DETERMINED BY THE ENGINEER.

ONLY THOSE TREES DESIGNATED BY THE ENGINEER OR LISTED IN THE TREE REMOVAL SCHEDULE SHALL BE REMOVED. THE CONTRACTOR SHALL PROTECT ALL REMAINING TREES FROM DAMAGE DUE TO HIS OPERATIONS.

THE FINISHED EARTHWORK SHALL HAVE A VEGETATION SUSTAINING SOIL COVERING THE TOP FOUR INCHES IN AREAS TO BE SEED OR SODDED. THE VEGETATION SUSTAINING SOIL REQUIRED WILL NOT BE PAID FOR SEPARATELY BUT WILL BE INCLUDED IN THE COST OF "FURNISHED EXCAVATION".

ALL EXCAVATED MATERIAL, WHICH INCLUDES DIGGING OR GRADING OF ANY SOIL OR FILL MATERIAL, WITH THE EXCEPTION OF AGGREGATE FILLS, MUST BE INCORPORATED WITHIN THE IDOT RIGHT OF WAY DUE TO ENVIRONMENTAL DOCUMENTATION REQUIREMENTS.

ABANDONED UNDERGROUND UTILITIES THAT CONFLICT WITH CONSTRUCTION SHALL BE DISPOSED OF OUTSIDE THE LIMITS OF THE RIGHT OF WAY ACCORDING TO ARTICLE 202.03 OF THE STANDARD SPECIFICATIONS AND AS DIRECTED BY THE ENGINEER. THIS WORK WILL NOT BE PAID FOR SEPARATELY, BUT WILL BE INCLUDED IN THE COST OF EARTH EXCAVATION.

ANY REFERENCE TO A STANDARD IN THESE PLANS SHALL BE INTERPRETED TO MEAN THE EDITION AS INDICATED BY THE SUBNUMBER SHOWN IN THE LIST OF STANDARDS OR THE COPY INCLUDED IN THESE PLANS.

THE FOLLOWING RATES OF APPLICATION HAVE BEEN USED IN CALCULATING PLAN QUANTITIES:

RIP RAP	1.35	TONS / CU YD
	0.0375	TONS / SQ YD / IN

THE WORK REQUIRED TO CONNECT ANY SEWER TO AN EXISTING DRAINAGE STRUCTURE OR PIPE WILL NOT BE PAID FOR SEPARATELY, BUT WILL BE CONSIDERED AS INCLUDED IN THE CONTRACT UNIT PRICE BID FOR THE SEWER ITEMS.

THE CONTRACTOR SHALL CONTACT JULIE AT LEAST 48 HOURS PRIOR TO EXCAVATION TO DETERMINE WHICH UTILITIES ARE IN THE AREA.

COMMITMENTS

STATE OF ILLINOIS
DEPARTMENT OF TRANSPORTATION
DISTRICT THREE
AS BUILT INFORMATION

SUPERVISING CONSTRUCTION FIELD ENGINEER

RESIDENT ENGINEER / TECHNICIAN

START & END DATES
OF CONSTRUCTION: _____

INSPECTORS: _____

STATE OF ILLINOIS
DEPARTMENT OF TRANSPORTATION
DISTRICT THREE

REVIEWED BY: Dan Beavish (wr)
DISTRICT STUDIES & PLANS ENGINEER

DATE: 07/11/17

EXAMINED BY: [Signature]
DISTRICT CONSTRUCTION ENGINEER

Michael A. Stot
DISTRICT MATERIALS ENGINEER

[Signature]
DISTRICT OPERATIONS ENGINEER

FILE NAME =	USER NAME = woodshenr1	DESIGNED - RW	REVISED -
path: \\IL084EBI0\INTEG.illinois.gov\PIWIDT\Documents\IDOT Offices\District 3\Projects\0356\Drawings\64\shenr1\0356H51-shr-detail.dwg		CHECKED - EP	REVISED -
Default	PLOT SCALE = 100.0000' / 1" /	DATE - 6/6/2017	REVISED -

STATE OF ILLINOIS
DEPARTMENT OF TRANSPORTATION

GENERAL NOTES

SCALE: SHEET 1 OF 1 SHEETS STA. TO STA.

F.A.I. RTE.	SECTION	COUNTY	TOTAL SHEETS	SHEET NO.
80	150-4ISLP	LASALLE	7	2
			CONTRACT NO. 66H51	
ILLINOIS FED. AID PROJECT				

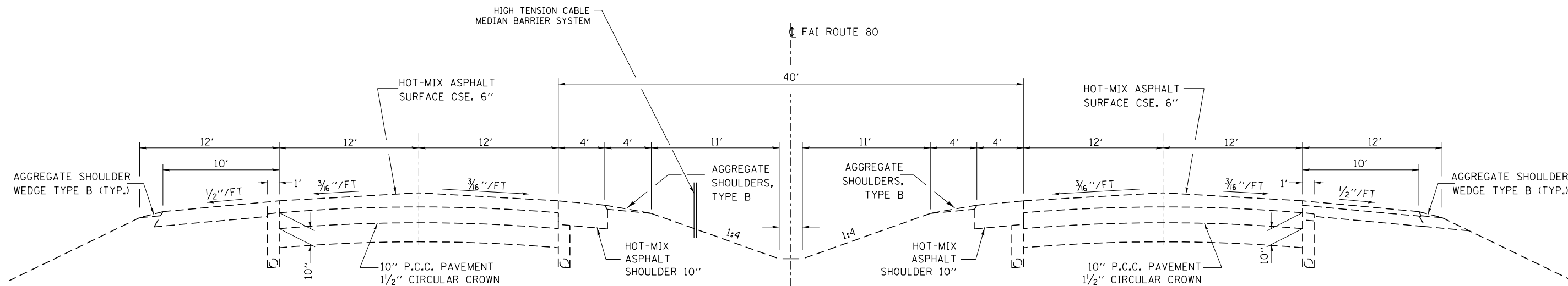
CONSTR. CODE
CONTRACT MAINT.
100% STATE ✓
ROADWAY
0020
URBAN

CODE NO.	ITEM	UNIT	TOTAL QUANTITY	
28100107	STONE RIPRAP, CLASS A4	SQ YD	20	20
28200200	FILTER FABRIC	SQ YD	116	116
28300400	AGGREGATE DITCH	TON	17	17
28400100	GABIONS	CU YD	40	40
44004000	PAVED DITCH REMOVAL	FOOT	55	55
* 63301210	REMOVE AND REERECT STEEL PLATE BEAM GUARDRAIL, TYPE A	FOOT	200	200
67100100	MOBILIZATION	LSUM	1	1
X0324028	GROUT FOR USE WITH RIPRAP	CU YD	1.6	1.6
X0325969	PORTABLE, VEHICLE MOUNTED, CHANGEABLE MESSAGE BOARD	CAL DA	5	5
X0326880	MESSAGE BOARD VEHICLE DRIVER	HOUR	50	50
X7010805	TRAFFIC CONTROL AND PROTECTION, STANDARD 701401 (SPECIAL)	LSUM	1	1
X7015005	CHANGEABLE MESSAGE SIGN	CAL DA	5	5
Z0015500	DEBRIS REMOVAL	LSUM	1	1

B * SPECIALTY ITEMS

FILE NAME =	USER NAME = woodshankr1	DESIGNED - RW	REVISED -	STATE OF ILLINOIS DEPARTMENT OF TRANSPORTATION	SUMMARY OF QUANTITIES	F.A.I. RTE.	SECTION	COUNTY	TOTAL SHEETS	SHEET NO.	
pc:\11084EBIDINTEG.illinois.gov\FWDDT\Documents\1001 Offices\District 3\Projects\0368-DRAWING\GADshankr\0368H51-shr-detail	ORAWD	REVISION	REVISION			80	(50-4)SLP	LASALLE	7	3	
Default	PLOT SCALE = 100.0000 / in.	CHECKED - EP	REVISED -			SCALE:	SHEET 1 OF 1 SHEETS	STA.	TO STA.	ILLINOIS FED. AID PROJECT	CONTRACT NO. 66H51
	PLOT DATE = 7/10/2017	DATE - 6/6/2017	REVISED -								

REV



EXISTING TYPICAL SECTION

I-80
STA. 601+26.32 TO STA. 610+00

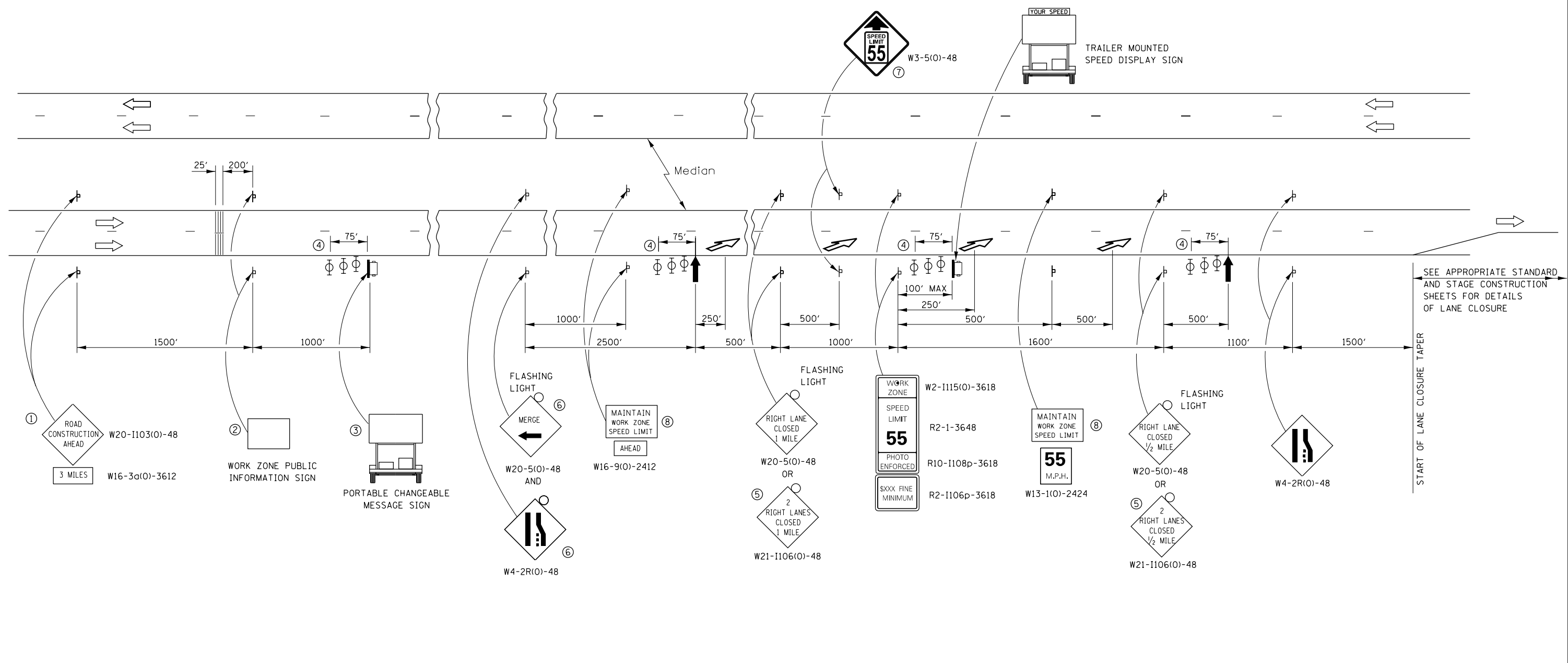
FILE NAME =	USER NAME = woodshankr1	DESIGNED - RW	REVISED -
pw:\IL\084EBIDINTEG.illinois.gov\PI\DOT\Documents\DOT Offices\District 3\Projects\0366\Drawings\0366\0366H51-shd-detail.dwg		DRAWN BY = RW	REVISED -
Default	PLOT SCALE = 100.0000' / in.	CHECKED - EP	REVISED -
	PLOT DATE = 7/10/2017	DATE - 6/6/2017	REVISED -

**STATE OF ILLINOIS
DEPARTMENT OF TRANSPORTATION**

TYPICAL SECTIONS

SCALE: SHEET 1 OF 1 SHEETS STA. TO STA.

F.A.I. RTE.	SECTION	COUNTY	TOTAL SHEETS	SHEET NO.
80	(50-4)SLP	LASALLE	7	4
			CONTRACT NO. 66H51	
ILLINOIS FED. AID PROJECT				



- ① THE ROAD CONSTRUCTION AHEAD SIGN SHALL BE LOCATED 3 MILES IN ADVANCE OF THE PROJECT LIMITS.
- ② THE MESSAGE AND SIZE OF THE WORK ZONE PUBLIC INFORMATION SIGN SHALL BE AS SPECIFIED BY THE DEPARTMENT.
- ③ TO BE PLACED IN THE MEDIAN WHEN FEASIBLE. THE MESSAGE BOARD SHALL BE USED TO DISPLAY STATUS OF LANES WITHIN THE PROJECT. THE PRIMARY MESSAGES SHALL BE:
"RIGHT LANE CLOSED" / " x MILES AHEAD"
"LEFT LANE CLOSED" / " x MILES AHEAD"
"ALL LANES OPEN"
- ④ THREE, TYPE II BARRICADES, DRUMS, OR VERTICAL BARRICADES AT 25' CENTERS.
- ⑤ THIS SIGN SHALL BE USED WHEN 2 LANES ARE CLOSED.
- ⑥ WHEN THE LEFT LANE IS CLOSED, SWITCH THESE TWO SIGNS AND THE DIRECTION OF THE MERGE ARROW.
- ⑦ THIS SIGN SHALL ONLY BE USED IF THE EXISTING SPEED LIMIT IS GREATER THAN 65 MPH.

⑧ 48"x36" FLUORESCENT ORANGE SIGN WITH BLACK LETTERS.
48"



- ↑ ARROW BOARD
- ☐ PORTABLE CHANGEABLE MESSAGE SIGN
- ⊥ SIGN
- ⊕ TYPE II BARRICADE, DRUM, OR VERTICAL BARRICADE WITH MONODIRECTIONAL FLASHING LIGHT
- ↘ LANE DROP ARROW - SEE STANDARD 780001
- ▨ TEMPORARY THERMOPLASTIC RUMBLE STRIPS

GENERAL NOTE:

THIS STANDARD IS USED WHERE AT ANY TIME A LANE IS CLOSED ON A FREEWAY/EXPRESSWAY.

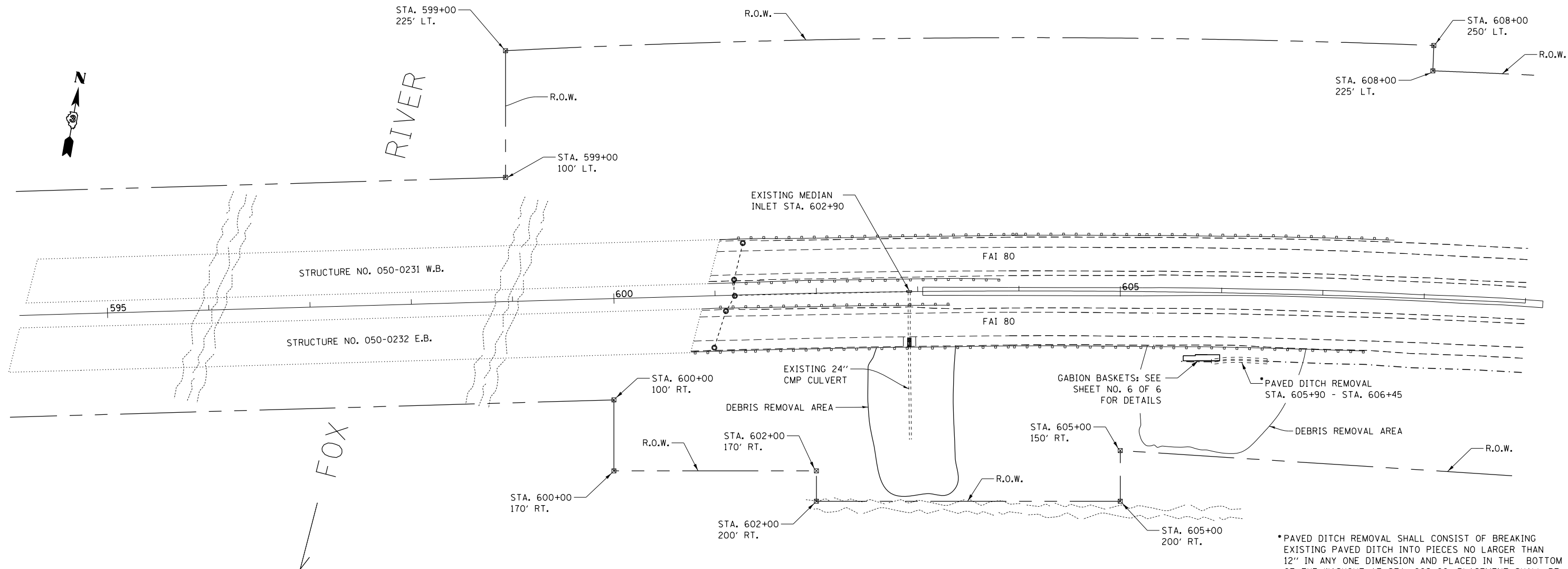
WHEN THE LEFT LANE IS CLOSED, LEFT LANE CLOSED SIGNS SHALL BE SUBSTITUTED FOR THE RIGHT LANE CLOSED SIGNS.

THE FIRST TWO SIGNS AND THE MESSAGE BOARD ARE STATIONARY. THE OTHER SIGNS AND ARROWBOARDS SHALL BE MOVED AS NECESSARY TO MAINTAIN THE REQUIRED DISTANCE FROM THE START OF THE LANE CLOSURE TAPER(S).

SEE SPECIAL PROVISIONS.

ALL DIMENSIONS ARE IN INCHES UNLESS OTHERWISE SHOWN.

FILE NAME =	USER NAME = woodshankr1	DESIGNED - RW	REVISED -	STATE OF ILLINOIS DEPARTMENT OF TRANSPORTATION	TRAFFIC CONTROL AND PROTECTION, STANDARD 701400 (SPECIAL)	F.A.I. RTE.	SECTION	COUNTY	TOTAL SHEETS	SHEET NO.
pw:\IL\084EBIDINTEG.illinois.gov\PI\DOT\Documents\DOT Offices\District 3\Projects\0366\Drawings\GAD\0366H51-shd-detailed	DRAWN BY	CHECKED - EP	REVISED -			80	(50-4)SLP	LASALLE	7	5
Default	PLOT SCALE = 100.0000' / in.	DATE - 6/6/2017	REVISED -			CONTRACT NO. 66H51				
	PLOT DATE = 7/10/2017	DATE - 6/6/2017	REVISED -			ILLINOIS FED. AID PROJECT				



*PAVED DITCH REMOVAL SHALL CONSIST OF BREAKING EXISTING PAVED DITCH INTO PIECES NO LARGER THAN 12" IN ANY ONE DIMENSION AND PLACED IN THE BOTTOM OF THE WASHOUT AT STA. 602+90. PLACEMENT SHALL BE SUCH AS TO NOT BLOCK THE NATURAL DRAINAGE FLOW.

SCHEDULE

LOCATION	DEBRIS REMOVAL	REMOVE AND RE-ERECT STEEL PLATE BEAM GUARDRAIL, TYPE A
STA. TO STA.	L SUM	FOOT
STA. 602+40 TO STA. 603+40	0.5	100
STA. 605+40 TO STA. 606+40	0.5	100
TOTAL	1	200

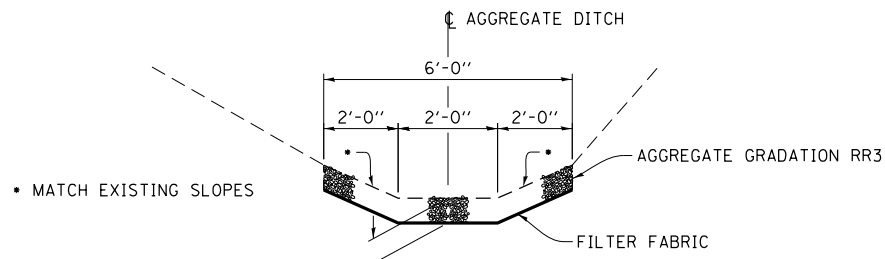
FILE NAME =	USER NAME = woodshankr1	DESIGNED - RW	REVISED -
pw:\IL\084EBIDINTEG.illinois.gov\PI\DOT\Documents\DOT Offices\District 3\Projects\0366\SHD\data\CAD\shd\0366H51-shd-details		DRAWN - RW	REVISED -
Default	PLOT SCALE = 100.0000' / in.	CHECKED - EP	REVISED -
	PLOT DATE = 7/10/2017	DATE - 6/6/2017	REVISED -

**STATE OF ILLINOIS
DEPARTMENT OF TRANSPORTATION**

SITE PLAN

SCALE: SHEET 1 OF 1 SHEETS STA. TO STA.

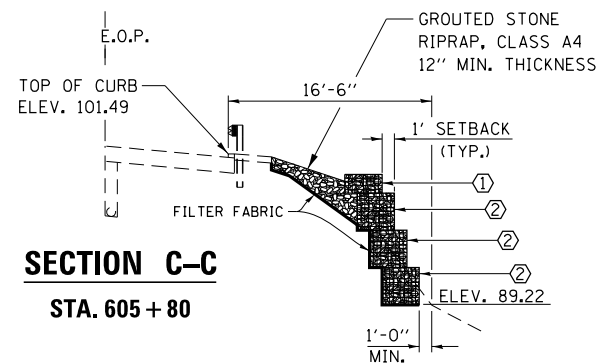
F.A.I. RTE.	SECTION	COUNTY	TOTAL SHEETS	SHEET NO.
80	(50-4)SLP	LASALLE	7	6
			CONTRACT NO. 66H51	
ILLINOIS FED. AID PROJECT				



AGGREGATE DITCH

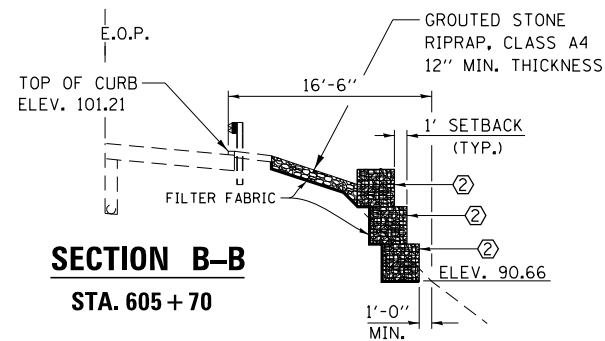
STA. 605 + 90 TO STA. 606 + 45

NOTE:
WHENEVER HOLES, DEPRESSIONS ARE FOUND UNDER THE PAVED DITCH, THE "FILTER FABRIC" SHALL BE PLACED SO THAT THE FABRIC FOLLOWS NATURAL GROUND LINE PRIOR TO PLACING/FILLING THE HOLE/DEPRESSION, DITCH WITH RIPRAP.



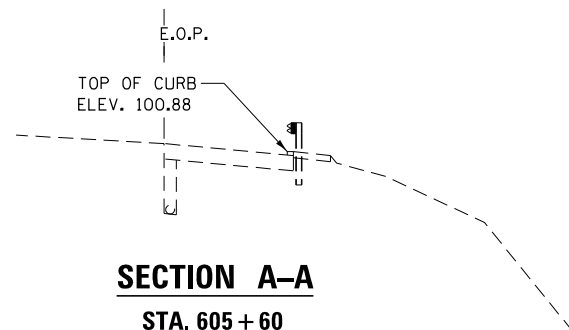
SECTION C-C

STA. 605 + 80



SECTION B-B

STA. 605 + 70

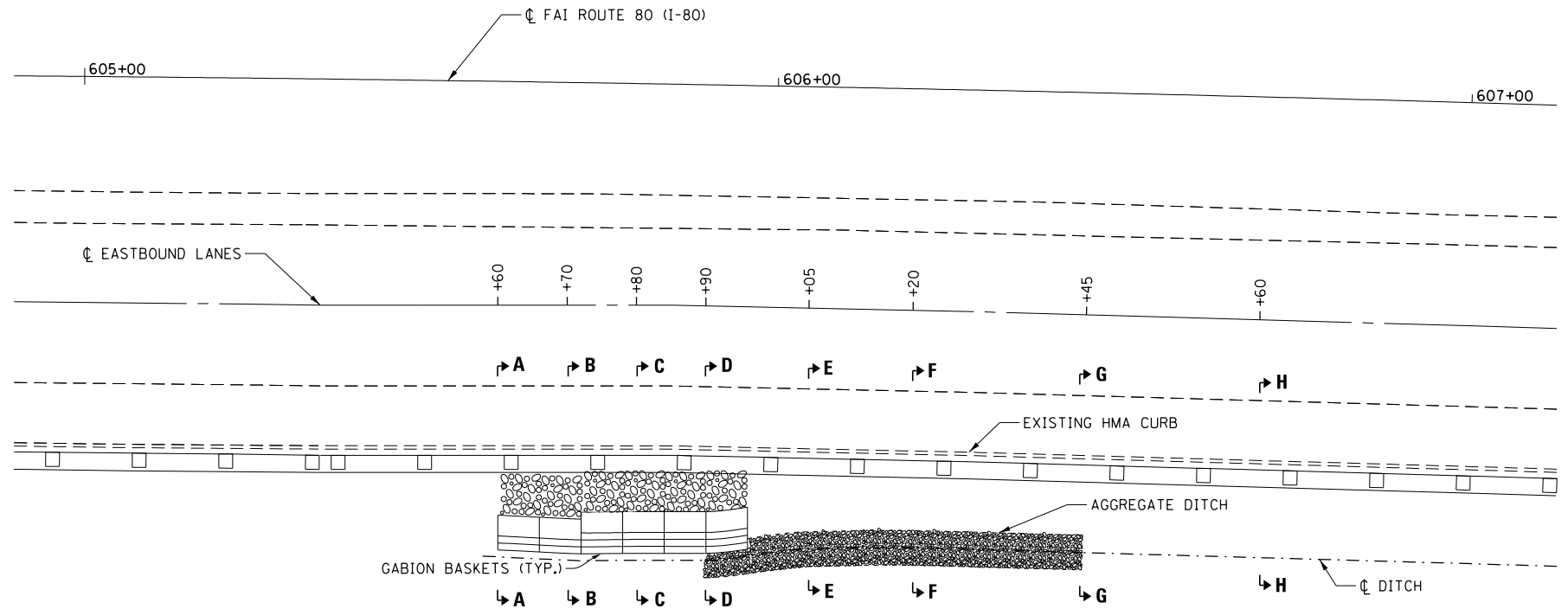


SECTION A-A

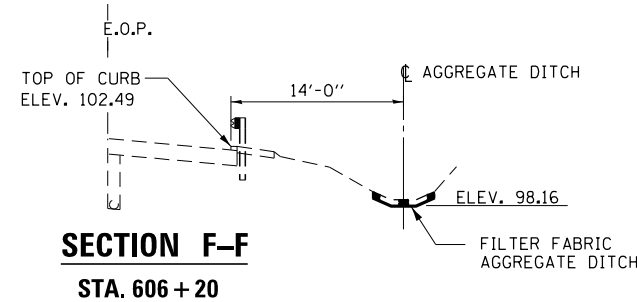
STA. 605 + 60

LEGEND

- ① 3' x 1'-6" x 6' GABION BASKET
- ② 3' x 3' x 6' GABION BASKET

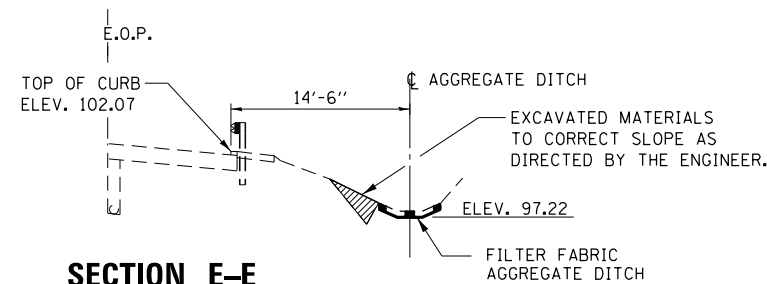


**PLAN
LOCATION NO. 2**



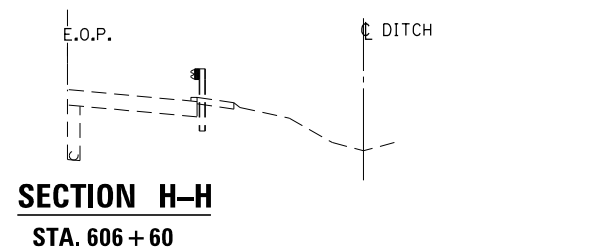
SECTION F-F

STA. 606 + 20



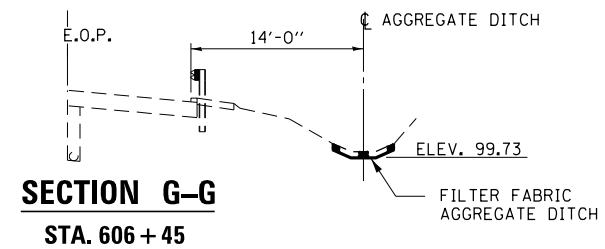
SECTION E-E

STA. 606 + 05



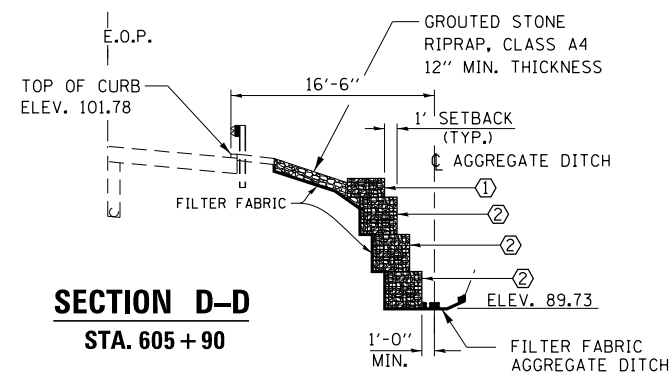
SECTION H-H

STA. 606 + 60



SECTION G-G

STA. 606 + 45



SECTION D-D

STA. 605 + 90

GENERAL NOTES:

REMOVAL OF ANY "EARTHEN" MATERIALS FROM THE RIGHT OF WAY SHALL NOT BE PERMITTED. ALL EARTHEN MATERIALS SHALL REMAIN ON-SITE AND SHALL BE REMOVED (CLEANED) FROM ANY DEBRIS OR CONSTRUCTION ITEMS BEING REMOVED FROM THE RIGHT OF WAY TO THE SATISFACTION OF THE ENGINEER.

UNLESS OTHERWISE NOTED, EXCESS EXCAVATED MATERIALS SHALL BE USED TO FILL DEPRESSION AND HOLES ON THE SLOPES OR BOTTOM OF WASHOUT AT STA. 602+90 RT.

BEDDING MATERIALS SHALL NOT BE REQUIRED FOR STONE RIPRAP.

FILE NAME =	USER NAME = woodshankr1	DESIGNED - RW	REVISED -
pw:\11084EBIDINTEG.illinois.gov\PI\DOT\Documents\DOT Offices\District 3\Projects\0366\Drawings\0366H51-shd-detailed		CHECKED - EP	REVISED -
Default	PLOT SCALE = 100.0000' / in.	DATE - 6/6/2017	REVISED -
	PLOT DATE = 7/10/2017		

STATE OF ILLINOIS
DEPARTMENT OF TRANSPORTATION

SITE PLAN DETAILS

SCALE: SHEET 1 OF 1 SHEETS STA. TO STA.

F.A.I. RTE.	SECTION	COUNTY	TOTAL SHEETS	SHEET NO.
80	(50-4)SLP	LASALLE	7	7
			CONTRACT NO. 66H51	
ILLINOIS FED. AID PROJECT				