

STATE OF ILLINOIS DEPARTMENT OF TRANSPORTATION

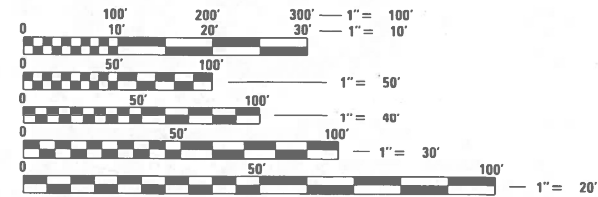
PROPOSED HIGHWAY PLANS

VARIOUS ROUTES LOCATIONS THROUGHOUT DISTRICT ONE SECTION 2022 VAR TREE REMOVAL TREE REMOVAL VARIOUS COUNTIES

C-91-089-23

FOR INDEX OF SHEETS, SEE SHEET NO. 2

PROJECT LOCATED IN VARIOUS
LOCATIONS WITHIN DISTRICT ONE

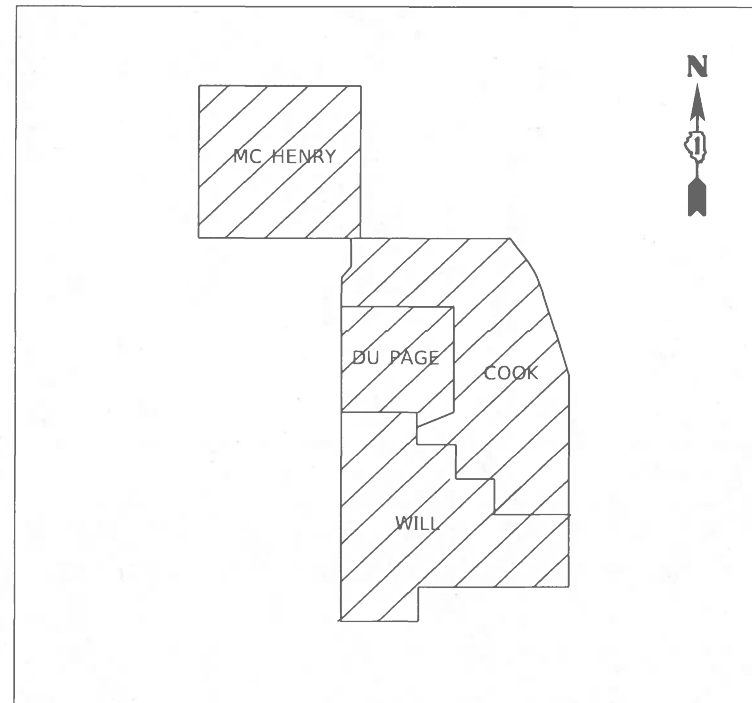


FULL SIZE PLANS HAVE BEEN PREPARED USING STANDARD ENGINEERING SCALES. REDUCED SIZED PLANS WILL NOT CONFORM TO STANDARD SCALES. IN MAKING MEASUREMENTS ON REDUCED PLANS, THE ABOVE SCALES MAY BE USED.

J.U.L.I.E.
JOINT UTILITY LOCATION INFORMATION FOR EXCAVATORS
1-800-892-0123
OR 811

PROJECT ENGINEER: DAN WILGREEN (847) 705-4240
PROJECT MANAGER: FAWAD AQUEEL

CONTRACT NO. 62U61



F.A. RTE.	SECTION	COUNTY	TOTAL SHEETS	SHEET NO.
VAR.	2022 VAR TREE REMOVAL	VARIOUS	25	1
ILLINOIS CONTRACT NO. 62U61				

* 25 + 3 = 28 TOTAL SHEETS
** 28 + 15 = 43 TOTAL SHEETS
D-91-062-23



STATE OF ILLINOIS
DEPARTMENT OF TRANSPORTATION

SUBMITTED June 28, 2023
Jose Luis Lopez
REGIONAL ENGINEER

August 18, 2023
Scott A. Etkin
ENGINEER OF DESIGN AND ENVIRONMENT

August 18, 2023
Stephen M. Smith
DIRECTOR OF HIGHWAYS PROJECT IMPLEMENTATION

PRINTED BY THE AUTHORITY
OF THE STATE OF ILLINOIS

INDEX OF SHEETS

HIGHWAY STANDARDS

GENERAL NOTES

SHEET NO.	DESCRIPTION
1	COVER SHEET
2	INDEX OF SHEETS, STATE STANDARDS, AND GENERAL NOTES
3	SUMMARY OF QUANTITIES
4-7B	PROJECT LOCATION MAP
8	TREE REMOVAL SCHEDULE
9-23M	TREE REMOVAL PLANS
24	ENTRANCE AND EXIT RAMP CLOSURE DETAILS (TC-08)
25	TRAFFIC CONTROL DETAILS FOR FREEWAY SHOULDER CLOSURES AND PARTIAL RAMP CLOSURES (TC-17)

STANDARD NO.	DESCRIPTION
000001 - 08	STANDARD SYMBOLS, ABBREVIATIONS AND PATTERNS
701001 - 02	OFF-ROAD OPERATIONS, 2L, 2W, MORE THAN 15' (4.5 m) AWAY
701006 - 05	OFF-ROAD OPERATIONS, 2L, 2W, 15' (4.5 m) TO 24" (600mm) FROM PAVEMENT EDGE
701011 - 04	OFF-ROAD MOVING OPERATIONS, 2L, 2W, DAY ONLY
701101 - 05	OFF-ROAD OPERATIONS, MULTILANE, 15' (4.5m) TO 24" (600mm) FROM PAVEMENT EDGE
701106 - 02	OFF-ROAD OPERATION, MULTILANE, MORE THAN 15' (4.5m) AWAY
701426 - 09	LANE CLOSURE, MULTILANE, INTERMITTENT OR MOVING OPERATION, FOR SPEEDS GREATER THAN OR EQUAL TO 45 MPH
701427 - 05	LANE CLOSURE, MULTILANE, INTERMITTENT OR MOVING OPERATION, FOR SPEEDS LESS THAN OR EQUAL TO 40 MPH
701602 - 10	URBAN SINGLE LANE CLOSURE, MULTILANE, 2W WITH BIDIRECTIONAL LEFT TURN LANE
701606 - 10	URBAN SINGLE LANE CLOSURE, MULTILANE, 2W WITH MOUNTABLE MEDIAN
701701 - 10	URBAN LANE CLOSURE, MULTILANE INTERSECTION
701901 - 08	TRAFFIC CONTROL DEVICES

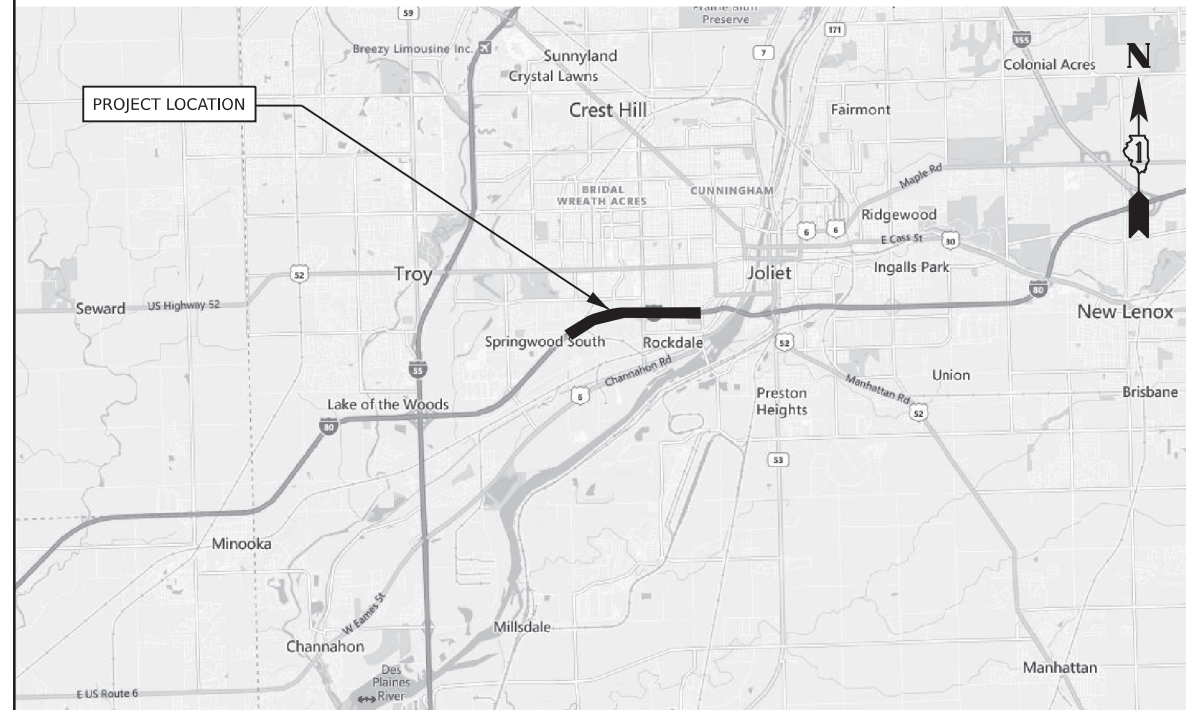
- 1 - ALL ELEVATIONS IN THE PLANS ARE BASED UPON THE NORTH AMERICAN VERTICAL DATUM OF 1988 (NAVD88), UNLESS OTHERWISE NOTED.
- 2 - A MINIMUM OF SEVENTY-TWO (72) HOURS BEFORE STARTING ANY EXCAVATION, THE CONTRACTOR SHALL CALL J.U.L.I.E. AT (800-892-0123) OR 811 TO HAVE THE LOCATION OF EXISTING UNDERGROUND UTILITIES MARKED IN THE FIELD.
- 3 - THE CONTRACTOR SHALL CONTACT KALPANA KANNAN-HOSADURGA, THE DISTRICT ONE TRAFFIC CONTROL SUPERVISOR AT KALPANA.KANNAN-HOSADURGA@ILLINOIS.GOV A MINIMUM OF 72 HOURS IN ADVANCE OF BEGINNING WORK.
- 4 - THE CONTRACTOR MUST CALL THE IDOT ELECTRICAL MAINTENANCE CONTRACTOR TO LOCATE IDOT FACILITY CABLES.
- 5 - THE CONTRACTOR WILL NOT BE ALLOWED TO SET UP A YARD OR FIELD OFFICE ON STATE PROPERTY WITHOUT WRITTEN PERMISSION FROM THE DEPARTMENT.
- 6 - THE CONTRACTOR SHALL BE REQUIRED TO PROVIDE ACCESS TO ABUTTING PROPERTY AT ALL TIMES DURING THE CONSTRUCTION OF THIS PROJECT.
- 7 - EXCEPT WHERE DESIGNATED OTHERWISE, THE LOCATIONS AND/OR DEPTHS OF UNDERGROUND UTILITIES SHOWN HAVE BEEN TAKEN FROM OFFICE RECORD INFORMATION FURNISHED BY THE UTILITY OWNERS AND THE SUE SURVEYS. ALL UNDERGROUND UTILITIES MUST BE CONSIDERED APPROXIMATE. THE CONTRACTOR SHALL BE RESPONSIBLE FOR THE PROTECTION OF ALL UNDERGROUND OR SURFACE UTILITIES EVEN THOUGH THEY MAY NOT BE SHOWN IN THE PLANS. ANY UTILITY THAT IS DAMAGED DURING CONSTRUCTION SHALL BE REPAIRED OR REPLACED TO THE SATISFACTION OF THE ENGINEER. THIS WORK SHALL BE AT THE CONTRACTOR'S EXPENSE.
- 8 - THE CONSTRUCTION LIMITS WILL BE STAKED AND APPROVED BY THE ENGINEER PRIOR TO COMMENCING CONSTRUCTION. THE CONSTRUCTION LIMITS MAY BE ADJUSTED BY THE ENGINEER TO PRESERVE TREES AND NO ADDITIONAL COMPENSATION WILL BE PAID TO THE CONTRACTOR FOR CHANGES IN CONSTRUCTION LIMITS.
- 9 - DURING CONSTRUCTION OPERATIONS, WHEN ANY LOOSE MATERIAL IS DEPOSITED IN THE FLOW LINE OF DITCHES, GUTTERS, OR DRAINAGE STRUCTURES SO THAT THE NATURAL FLOW OF WATER IS OBSTRUCTED, THE MATERIAL SHALL BE REMOVED AT THE CLOSE OF EACH WORKING DAY. THIS WORK SHALL BE INCLUDED IN THE COST OF TREE REMOVAL.
- 10 - THE CONTRACTOR SHALL OBSERVE AND COMPLY WITH ALL SECTIONS OF THE ILLINOIS CUSTOM SPRAY LAW, INCLUDING LICENSING. CONTRACTOR PERSONNEL APPLYING HERBICIDES SHALL HAVE A VALID PESTICIDE APPLICATOR LICENSE ISSUED BY THE ILLINOIS DEPARTMENT OF AGRICULTURE. THE LICENSED PESTICIDE APPLICATOR SHALL SUBMIT THEIR CURRENT LICENSE TO THE ENGINEER. THE LICENSED PESTICIDE APPLICATOR SHALL BE QUALIFIED AT A MINIMUM IN RIGHT-OF-WAY AND AQUATICS. THE LICENSED APPLICATOR SHALL WORK ON-SITE.

MODEL: Default
 FILE: \\s:\csw_bentley.com\PI\DOT\Documents\DOT_Offices\Dir\dct_1\Projects\106223\CADD\data\Drawn\106223-shr-egenrce.dgn

 REVISED SHEET 9/5/2023

USER NAME = Rana,Kalo	DESIGNED -	REVISED -  RK 08-25-2023	STATE OF ILLINOIS DEPARTMENT OF TRANSPORTATION	INDEX OF SHEETS, STATE STANDARDS AND GENERAL NOTES				F.A. RTE.	SECTION	COUNTY	TOTAL SHEETS	SHEET NO.			
	DRAWN -	REVISED -		SCALE:	SHEET	OF	SHEETS	STA.	TO	STA.	VAR.	2022 VAR TREE REMOVAL	VARIOUS	25	2
PLOT SCALE = 100,0000 ' / in.	CHECKED -	REVISED -		CONTRACT NO. 62U61											
PLOT DATE = 8/25/2023	DATE -	REVISED -		ILLINOIS FED. AID PROJECT											

I-80 JOLIET JUNCTION TRAIL TO WHEELER AVENUE - WILL COUNTY
 FOR PLAN VIEW SHEETS, SEE SHEETS NO. 23C-23M



MODEL: 4100\PLANAMES
 FILE NAME: 31E1E1

TRANSYSTEMS

USER NAME = \$USERS	DESIGNED -	REVISED -	REVISED - VJ - 08/23/23
	DRAWN -	REVISED -	
PLOT SCALE = \$SCALE\$	CHECKED -	REVISED -	
PLOT DATE = \$DATES	DATE -	REVISED -	

**STATE OF ILLINOIS
 DEPARTMENT OF TRANSPORTATION**

PROJECT LOCATION MAP

SCALE: SHEET OF SHEETS STA. TO STA.

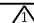
REVISED ENTIRE SHEET 9/5/2023

F.A. RTE.	SECTION	COUNTY	TOTAL SHEETS	SHEET NO.
VAR.	2022 VAR TREE REMOVAL	VARIOUS	25	7B
CONTRACT NO. 62U61				
ILLINOIS FED. AID PROJECT				

MODEL: Default
 FILE: \\msc-pw-bentley.com\PW\DOT\Documents\DOT_Offices\Dhrt\dt_1\Projects\106223\CADD\Drawings\106223-shr-schedule.dgn

TREE REMOVAL SCHEDULE									
LOCATION	TREE REMOVAL (6 TO 15 UNITS DIAMETER)	TREE REMOVAL (OVER 15 UNITS DIAMETER)	TREE REMOVAL, ACRES	TREE PRUNING (1 TO 10 INCH DIAMETER)	TREE PRUNING (OVER 10 INCH DIAMETER)	PRUNING FOR SAFETY AND EQUIPMENT CLEARANCE	TREE REMOVAL (UNDER 6 UNITS DIAMETER)	TREE REMOVAL, ACRES (SPECIAL)	SELECTIVE CLEARING
	UNIT	UNIT	ACRE	EACH	EACH	LSUM	UNIT	ACRE	UNIT
	20100110	20100210	20100500	20101300	20101350	K1004595	X0100018	X2010350	Z0064800
IL 43 at 87th St	6	0	0	1	5	0	0	0	0
I-55 N. Frontage Road at Cass Avenue	0	60	0	0	0	0	0	0	22
IL 59 over DuPage River	8	0	0	0	0	1	0	0	0.6
IL 176 over Ditch (1.9 Mile East of IL-47)	31	0	0	0	0	0	22	0	0
US 34: Rickert Dr to Feldott Ln	24	0	0	0	0	0	0	0	0
IL 53: Lake Cook Rd to North of Dundee Rd	0	0	0	104	73	0	0	3.25	0
Rand Rd: Elk Blvd to ballard rd	296	203	0.5	0	6	0	0	0	1.1
Touhy Ave Over North Branch Chicago River	318.8	125	0	0	0	0	0	0	0.5
IL 7 at IL 53	623	102	0	0	0	0	0	0	0
I-80 Joliet Junction Trail to Wheeler Avenue	716	263	8.5	0	0	0	0	7.25	0
TOTAL	2022.8	753	9	104	84	1	22	10.5	24.2

1

USER NAME = Rana,Kalo	DESIGNED -	REVISED -  RK 08-24-2023
	DRAWN -	REVISED -
PLOT SCALE = 100.0000' / in.	CHECKED -	REVISED -
PLOT DATE = 8/31/2023	DATE -	REVISED -

**STATE OF ILLINOIS
 DEPARTMENT OF TRANSPORTATION**

TREE REMOVAL SCHEDULE

SCALE: SHEET OF SHEETS STA. TO STA.

F.A. RTE.	SECTION	COUNTY	TOTAL SHEETS	SHEET NO.
VAR.	2022 VAR TREE REMOVAL	VARIOUS	25	8
			CONTRACT NO. 62U61	
		ILLINOIS	FED. AID PROJECT	

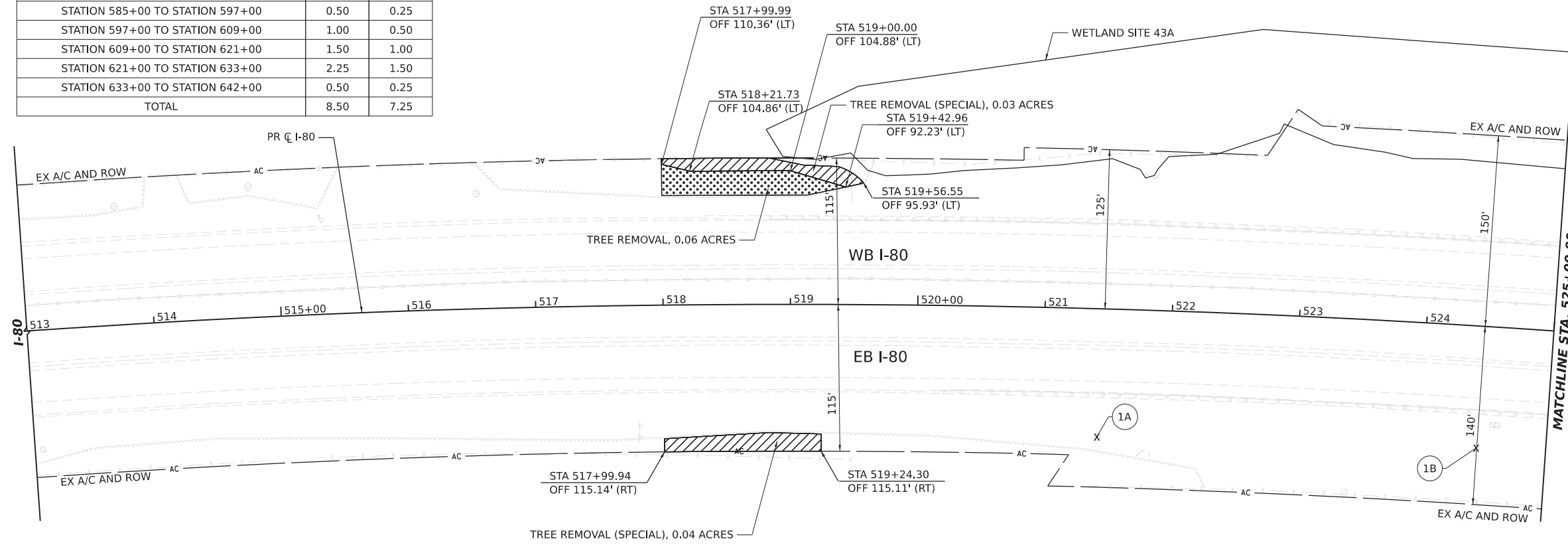
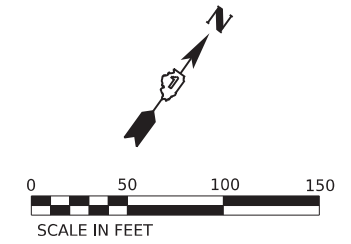
 REVISED SHEET 9/5/2023

TREE REMOVAL BY ACRE

LOCATION	TREE REMOVAL, ACRES	TREE REMOVAL, ACRES (SPECIAL)
STATION 518+00 TO STATION 525+00	0.25	0.50
STATION 525+00 TO STATION 537+00	0.50	0.50
STATION 537+00 TO STATION 549+00	1.00	1.00
STATION 549+00 TO STATION 561+00	0.50	0.50
STATION 561+00 TO STATION 573+00	0.25	0.25
STATION 573+00 TO STATION 585+00	0.25	1.00
STATION 585+00 TO STATION 597+00	0.50	0.25
STATION 597+00 TO STATION 609+00	1.00	0.50
STATION 609+00 TO STATION 621+00	1.50	1.00
STATION 621+00 TO STATION 633+00	2.25	1.50
STATION 633+00 TO STATION 642+00	0.50	0.25
TOTAL	8.50	7.25

TREE REMOVAL BY UNIT

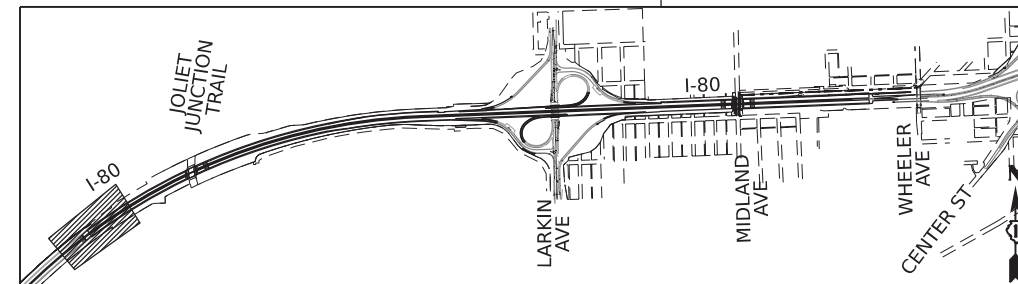
TREE	NORTHING	EASTING	SIZE	TREE REMOVAL (6 TO 15 UNITS DIAMETER)	TREE REMOVAL (OVER 15 UNITS DIAMETER)
			INCHES	UNIT	UNIT
1A	1763008.67	1035030.62	8	8	
1B	1763174.20	1035282.41	11	11	
			SUBTOTAL	19	0



REMOVAL LEGEND:

- X TREE REMOVAL
- [Dotted pattern] TREE REMOVAL, ACRES
- [Hatched pattern] TREE REMOVAL, ACRES (SPECIAL)

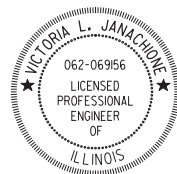
KEY PLAN



NOTES:

- ALL STATION AND OFFSETS ARE MEASURED FROM PR C I-80 UNLESS OTHERWISE NOTED.

REVISOR: [Symbol] REVISED ENTIRE SHEET 9/5/2023



Victoria L. Janachione 8/23/23
VICTORIA L. JANACHIONE DATE
 LICENSE EXPIRES 11/30/2023
 SHEET RANGE 7B, 23C-23M

TRANSYSTEMS

USER NAME = \$USERS	DESIGNED -	REVISED - [Symbol] VLJ - 08/23/23
PLOT SCALE = \$SCALE\$	DRAWN -	REVISED -
PLOT DATE = \$DATES	CHECKED -	REVISED -
	DATE -	REVISED -

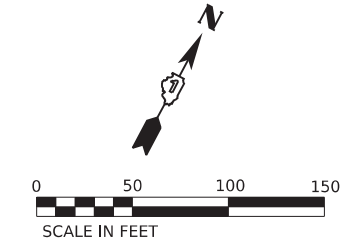
STATE OF ILLINOIS
DEPARTMENT OF TRANSPORTATION

I-80	
TREE REMOVAL PLAN	
SCALE: 1"=50'	SHEET 1 OF 11 SHEETS
STA. 518+00.00	TO STA. 525+00.00

F.A. RTE.	SECTION	COUNTY	TOTAL SHEETS	SHEET NO.
VAR.	2022 VAR TREE REMOVAL	VARIOUS	25	23C
CONTRACT NO. 62U61				
ILLINOIS FED. AID PROJECT				

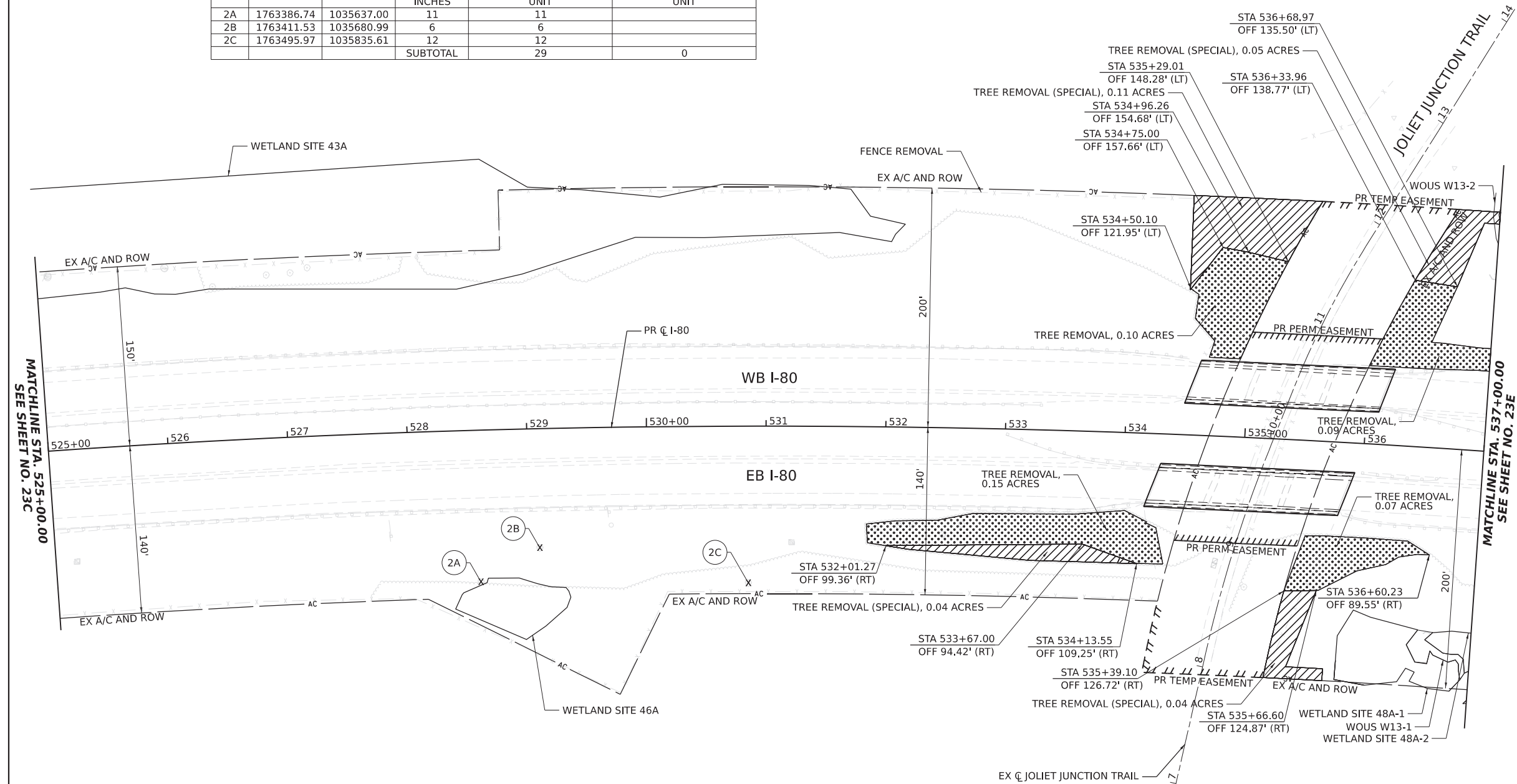
TREE REMOVAL BY UNIT

TREE	NORTHING	EASTING	SIZE	TREE REMOVAL (6 TO 15 UNITS DIAMETER)	TREE REMOVAL (OVER 15 UNITS DIAMETER)
			INCHES	UNIT	UNIT
2A	1763386.74	1035637.00	11	11	
2B	1763411.53	1035680.99	6	6	
2C	1763495.97	1035835.61	12	12	
			SUBTOTAL	29	0



NOTES:

- ALL STATION AND OFFSETS ARE MEASURED FROM PR C I-80 UNLESS OTHERWISE NOTED.

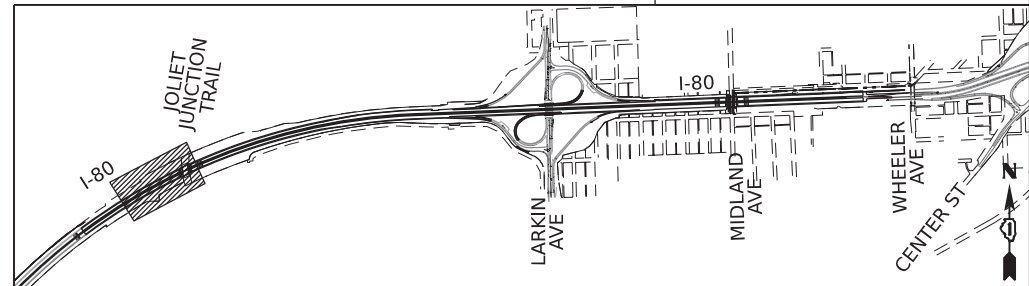


REMOVAL LEGEND:

- X TREE REMOVAL
- [Dotted pattern] TREE REMOVAL, ACRES
- [Hatched pattern] TREE REMOVAL, ACRES (SPECIAL)

- ### NOTES:
- ALL STATION AND OFFSETS ARE MEASURED FROM PR C I-80 UNLESS OTHERWISE NOTED.

KEY PLAN



REVISD ENTIRE SHEET 9/5/2023

MODEL: 4100DLEMMES
FILE NAME: 31E1E3

TRANSYSTEMS

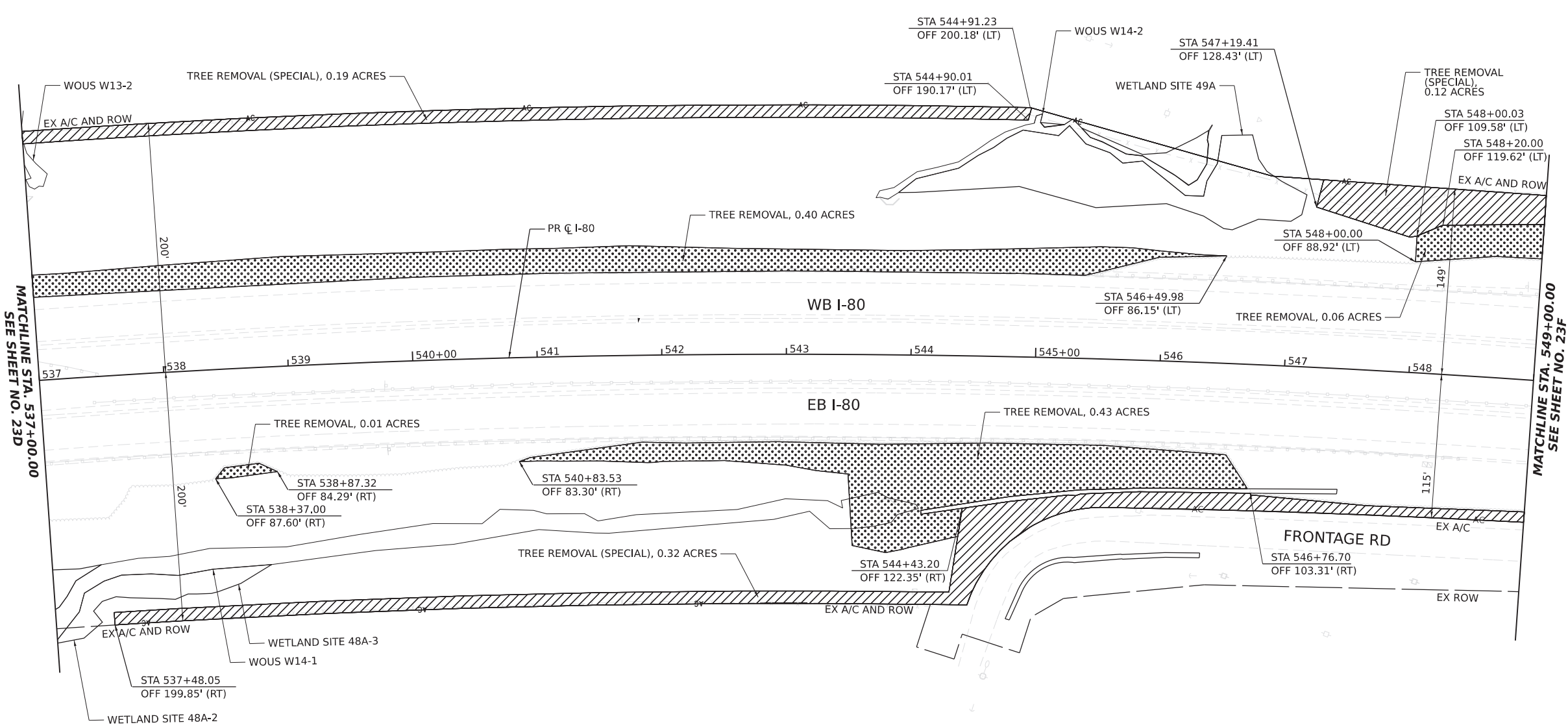
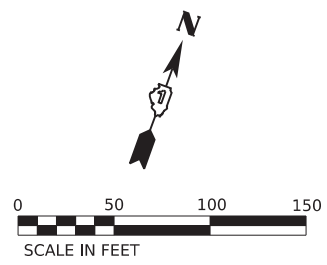
USER NAME = \$USERS	DESIGNED -	REVISED - Δ VLJ - 08/23/23
	DRAWN -	REVISED -
PLOT SCALE = \$SCALE\$	CHECKED -	REVISED -
PLOT DATE = \$DATES	DATE -	REVISED -

**STATE OF ILLINOIS
DEPARTMENT OF TRANSPORTATION**

**I-80
TREE REMOVAL PLAN**

SCALE: 1"=50' SHEET 2 OF 11 SHEETS STA. 525+00.00 TO STA. 537+00.00

F.A.:	SECTION	COUNTY	TOTAL SHEETS	SHEET NO.
RTE.				
VAR.	2022 VAR TREE REMOVAL	VARIOUS	25	23D
			CONTRACT NO. 62U61	
ILLINOIS FED. AID PROJECT				



MATCHLINE STA. 537+00.00
SEE SHEET NO. 23D

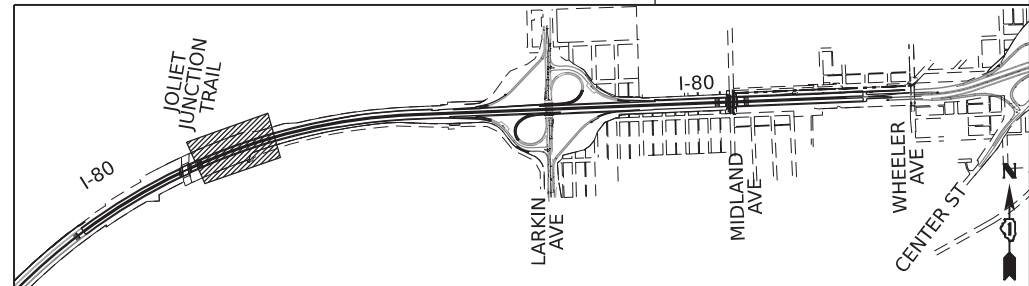
MATCHLINE STA. 549+00.00
SEE SHEET NO. 23F

REMOVAL LEGEND:

- X TREE REMOVAL
- [Dotted Pattern] TREE REMOVAL, ACRES
- [Hatched Pattern] TREE REMOVAL, ACRES (SPECIAL)

NOTES:
1. ALL STATION AND OFFSETS ARE MEASURED FROM PR C I-80 UNLESS OTHERWISE NOTED.

KEY PLAN



REVISD ENTIRE SHEET 9/5/2023

TRANSYSTEMS

USER NAME = \$USERS	DESIGNED -	REVISED -
	DRAWN -	REVISED -
PLOT SCALE = \$SCALE\$	CHECKED -	REVISED -
PLOT DATE = \$DATES	DATE -	REVISED -

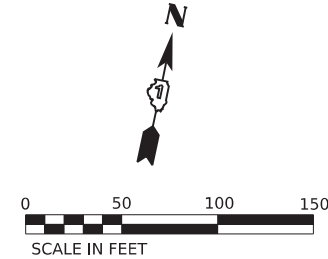
**STATE OF ILLINOIS
DEPARTMENT OF TRANSPORTATION**

**I-80
TREE REMOVAL PLAN**
SCALE: 1"=50' SHEET 3 OF 11 SHEETS STA. 537+00.00 TO STA. 549+00.00

F.A. RTE.	SECTION	COUNTY	TOTAL SHEETS	SHEET NO.
VAR.	2022 VAR TREE REMOVAL	VARIOUS	25	23E
CONTRACT NO. 62U61				

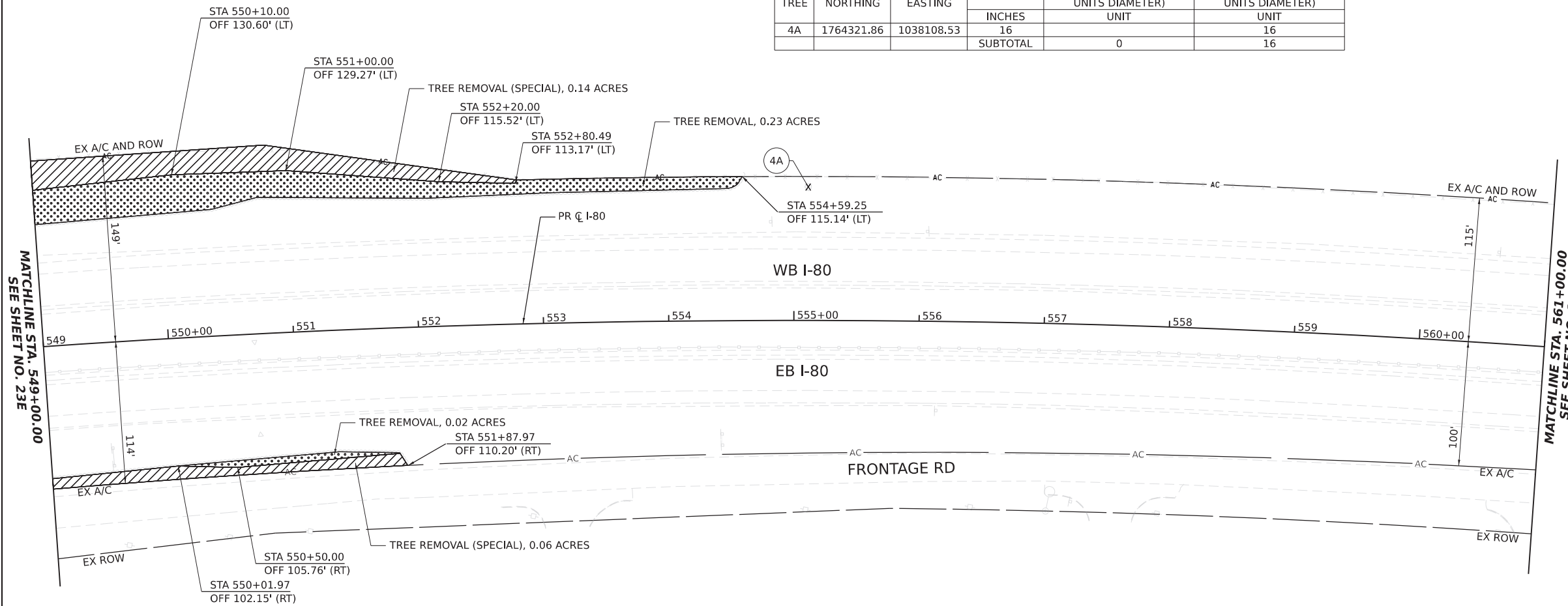
ILLINOIS FED. AID PROJECT

MODEL: \$MODELNAME\$
FILE NAME: \$FILE\$



TREE REMOVAL BY UNIT

TREE	NORTHING	EASTING	SIZE	TREE REMOVAL (6 TO 15 UNITS DIAMETER)	TREE REMOVAL (OVER 15 UNITS DIAMETER)
			INCHES	UNIT	UNIT
4A	1764321.86	1038108.53	16		16
			SUBTOTAL	0	16



MATCHLINE STA. 549+00.00
SEE SHEET NO. 23E

MATCHLINE STA. 561+00.00
SEE SHEET NO. 23G

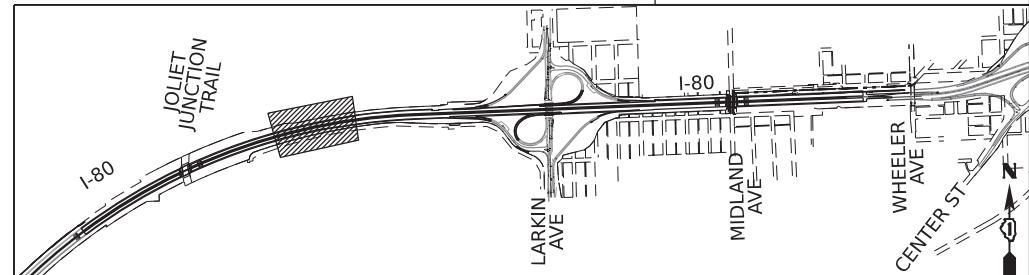
REMOVAL LEGEND:

- X TREE REMOVAL
- TREE REMOVAL, ACRES
- ▨ TREE REMOVAL, ACRES (SPECIAL)

NOTES:
1. ALL STATION AND OFFSETS ARE MEASURED FROM PR C I-80 UNLESS OTHERWISE NOTED.

1 REVISOR ENTIRE SHEET 9/5/2023

KEY PLAN



MODEL: 44002LX.MXD
FILE NAME: 23E13

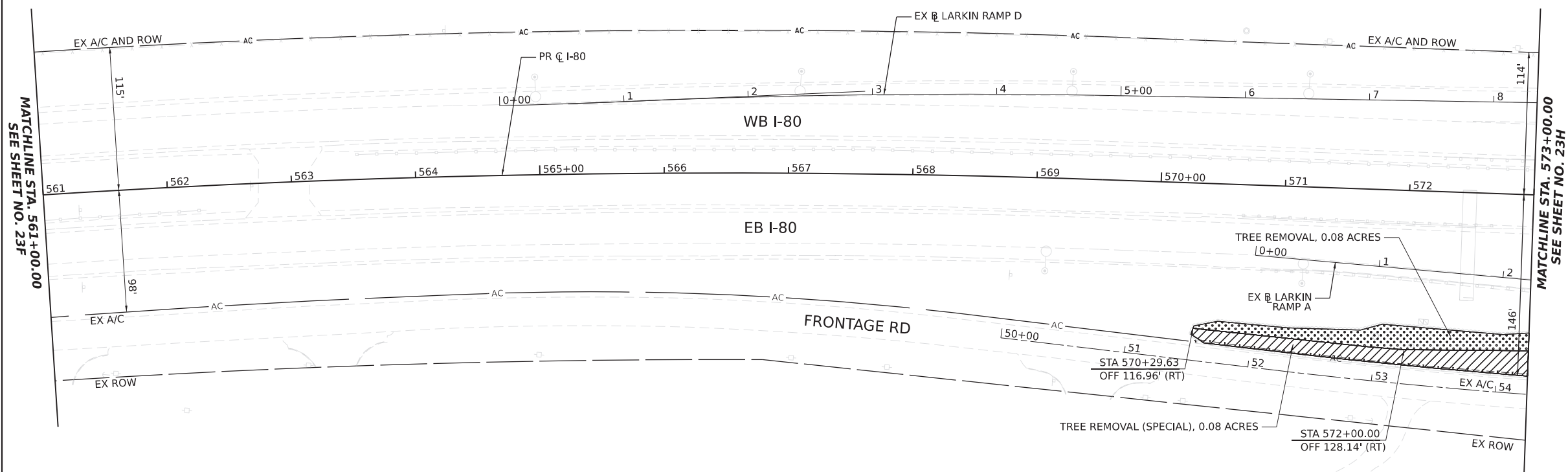
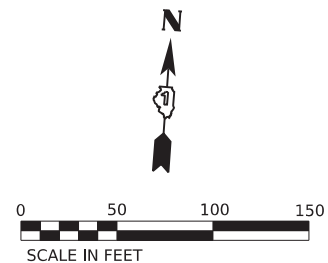
TRANSYSTEMS

USER NAME = \$USERS	DESIGNED -	REVISED - Δ VLJ - 08/23/23
	DRAWN -	REVISED -
PLOT SCALE = \$SCALE\$	CHECKED -	REVISED -
PLOT DATE = \$DATES	DATE -	REVISED -

**STATE OF ILLINOIS
DEPARTMENT OF TRANSPORTATION**

**I-80
TREE REMOVAL PLAN**
SCALE: 1"=50' SHEET 4 OF 11 SHEETS STA. 549+00.00 TO STA. 561+00.00

F.A. RTE.	SECTION	COUNTY	TOTAL SHEETS	SHEET NO.
VAR.	2022 VAR TREE REMOVAL	VARIOUS	25	23F
CONTRACT NO. 62U61				
ILLINOIS FED. AID PROJECT				



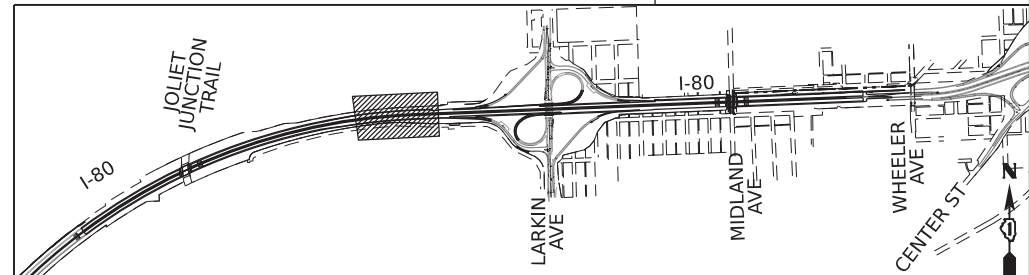
REMOVAL LEGEND:

- X TREE REMOVAL
- [Dotted pattern] TREE REMOVAL, ACRES
- [Hatched pattern] TREE REMOVAL, ACRES (SPECIAL)

NOTES:
 1. ALL STATION AND OFFSETS ARE MEASURED FROM PR C I-80 UNLESS OTHERWISE NOTED.

▲ REVISED ENTIRE SHEET 9/5/2023

KEY PLAN



MODEL: 4400\PLANAMES FILE NAME: 3FELEP

TRANSYSTEMS

USER NAME = \$USERS	DESIGNED -	REVISED - ▲ VLJ - 08/23/23
PLOT SCALE = \$SCALE\$	DRAWN -	REVISED -
PLOT DATE = \$DATES	CHECKED -	REVISED -
	DATE -	REVISED -

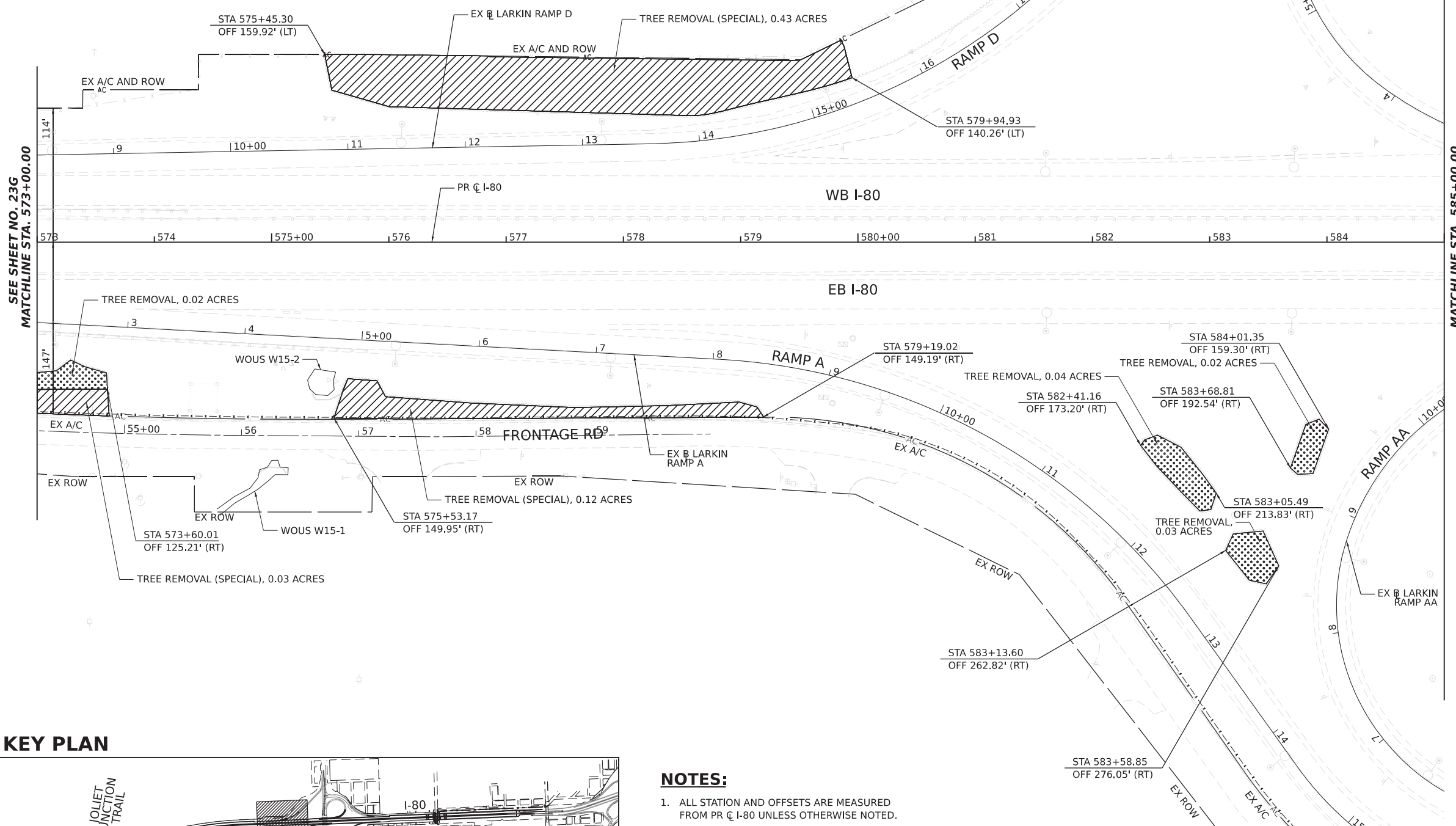
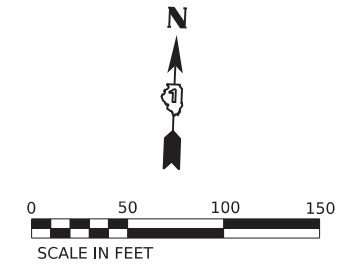
**STATE OF ILLINOIS
 DEPARTMENT OF TRANSPORTATION**

**I-80
 TREE REMOVAL PLAN**
 SCALE: 1"=50' SHEET 5 OF 11 SHEETS STA. 561+00.00 TO STA. 573+00.00

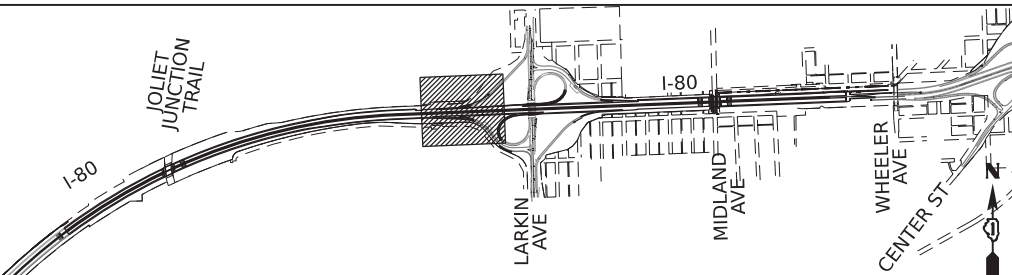
F.A. RTE.	SECTION	COUNTY	TOTAL SHEETS	SHEET NO.
VAR.	2022 VAR TREE REMOVAL	VARIOUS	25	23G
CONTRACT NO. 62U61				
ILLINOIS FED. AID PROJECT				

TREE REMOVAL BY UNIT

TREE	NORTHING	EASTING	SIZE	TREE REMOVAL (6 TO 15	TREE REMOVAL (OVER 15
			INCHES	UNITS DIAMETER)	UNITS DIAMETER)
6A	1764557.26	1040987.04	6	6	
6B	1764559.07	1041032.53	6	6	
6C	1764559.44	1041041.81	6	6	
6D	1764560.17	1041060.16	11	11	
6E	1764560.83	1041076.70	7	7	
			SUBTOTAL	36	0



KEY PLAN



- NOTES:**
1. ALL STATION AND OFFSETS ARE MEASURED FROM PR C I-80 UNLESS OTHERWISE NOTED.

REMOVAL LEGEND:

X	TREE REMOVAL
[Stippled Box]	TREE REMOVAL, ACRES
[Diagonal Line Box]	TREE REMOVAL, ACRES (SPECIAL)

REVISED ENTIRE SHEET 9/5/2023

MODEL: 4400BELMAME\$ FILE NAME: 3EELS

TRANSYSTEMS

USER NAME = \$USERS	DESIGNED -	REVISED -
PLOT SCALE = \$SCALE\$	DRAWN -	REVISED -
PLOT DATE = \$DATE\$	CHECKED -	REVISED -
	DATE -	REVISED -

**STATE OF ILLINOIS
DEPARTMENT OF TRANSPORTATION**

**I-80
TREE REMOVAL PLAN**

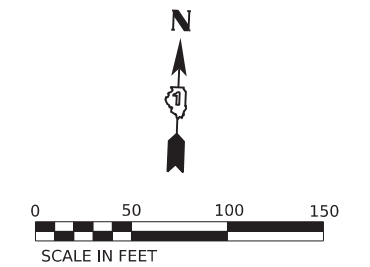
SCALE: 1"=50' SHEET 6 OF 11 SHEETS STA. 573+00.00 TO STA. 585+00.00

F.A. RTE.	SECTION	COUNTY	TOTAL SHEETS	SHEET NO.
VAR.	2022 VAR TREE REMOVAL	VARIOUS	25	23H
			CONTRACT NO. 62U61	
		ILLINOIS FED. AID PROJECT		

TREE REMOVAL BY UNIT

TREE	NORTHING	EASTING	SIZE	TREE REMOVAL (6 TO 15 UNITS DIAMETER)
			INCHES	UNIT
7A	1764561.87	1041102.77	8	8
7B	1764562.18	1041110.45	10	10
7D	1764564.22	1041161.62	14	14
7E	1764565.36	1041190.26	14	14
7F	1764568.56	1041270.57	14	14
7G	1764572.87	1041378.61	6	6
7H	1764573.08	1041383.71	8	8
7I	1764580.89	1041579.54	14	14
7J	1764585.04	1041683.80	6	6
7K	1764585.44	1041693.84	6	6
7L	1764589.59	1041797.66	10	10
7M	1764589.79	1041802.87	8	8
7N	1764561.18	1041837.57	14	14
7O	1764591.92	1041856.17	12	12
7P	1764592.31	1041865.95	6	6
7Q	1764592.76	1041877.13	11	11
7S	1764593.35	1041892.16	11	11
7T	1764593.68	1041900.30	12	12
7U	1764594.08	1041910.22	10	10
7V	1764594.15	1041912.06	8	8
7W	1764595.26	1041939.86	6	6
7X	1764596.08	1041960.44	10	10
7Y	1764600.09	1042061.02	6	6
7Z	1764600.87	1042080.80	6	6
7AA	1764601.25	1042090.03	8	8
7AB	1764601.41	1042094.02	6	6
7AC	1764601.68	1042100.94	6	6
7AD	1764601.79	1042103.70	6	6
7AE	1764601.89	1042106.24	6	6
7AF	1764604.24	1042165.06	6	6
7AG	1764604.82	1042179.62	6	6
SUBTOTAL				274

MATCHLINE STA. 597+00.00
SEE SHEET NO. 23J



TREE REMOVAL BY UNIT

TREE	NORTHING	EASTING	SIZE	TREE REMOVAL (OVER 15 UNITS DIAMETER)
			INCHES	UNIT
7C	1764563.65	1041147.45	27	27
7R	1764593.04	1041884.16	20	20
SUBTOTAL				47

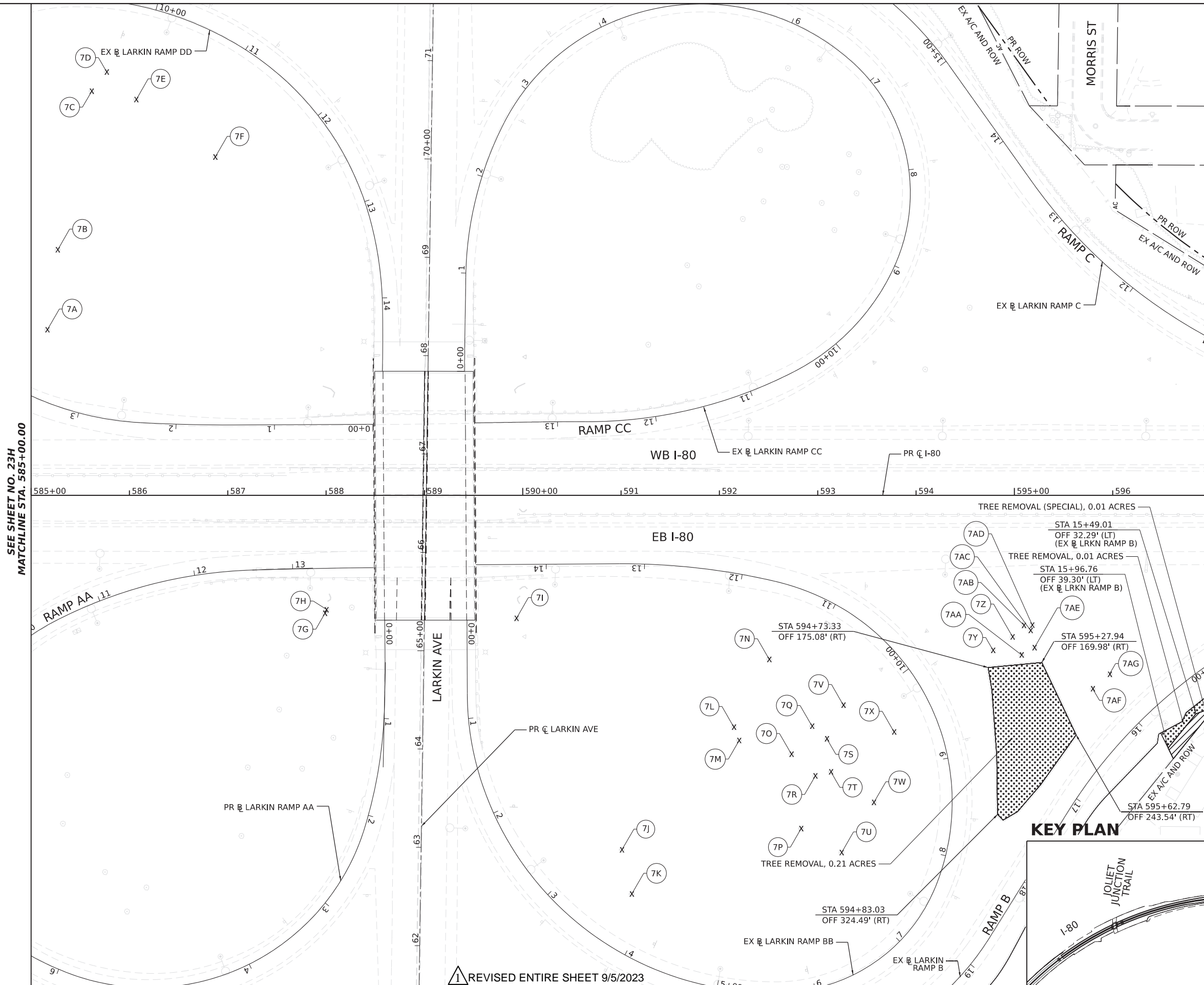
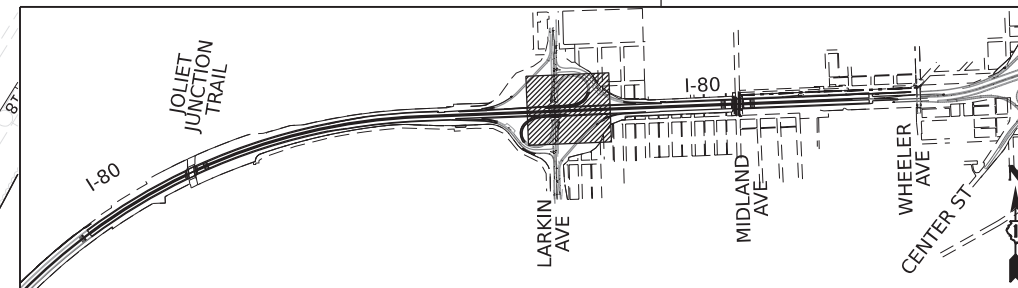
NOTES:

- ALL STATION AND OFFSETS ARE MEASURED FROM PR C I-80 UNLESS OTHERWISE NOTED.

REMOVAL LEGEND:

- X TREE REMOVAL
- TREE REMOVAL, ACRES
- ▨ TREE REMOVAL, ACRES (SPECIAL)

KEY PLAN



SEE SHEET NO. 23H
MATCHLINE STA. 585+00.00

1 REVISED ENTIRE SHEET 9/5/2023

TRANSYSTEMS

USER NAME = \$USERS	DESIGNED -	REVISED -	VLJ - 08/23/23
PLOT SCALE = \$SCALE\$	DRAWN -	REVISED -	
PLOT DATE = \$DATES	CHECKED -	REVISED -	
	DATE -	REVISED -	

**STATE OF ILLINOIS
DEPARTMENT OF TRANSPORTATION**

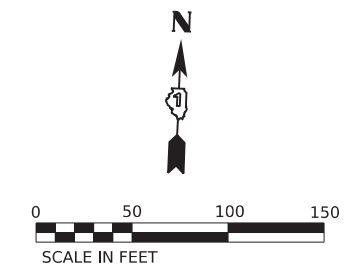
**I-80
TREE REMOVAL PLAN**
SCALE: 1"=50' SHEET 7 OF 11 SHEETS STA. 585+00.00 TO STA. 597+00.00

F.A. RTE.	SECTION	COUNTY	TOTAL SHEETS	SHEET NO.
VAR.	2022 VAR TREE REMOVAL	VARIOUS	25	23I
CONTRACT NO. 62U61				

ILLINOIS FED. AID PROJECT

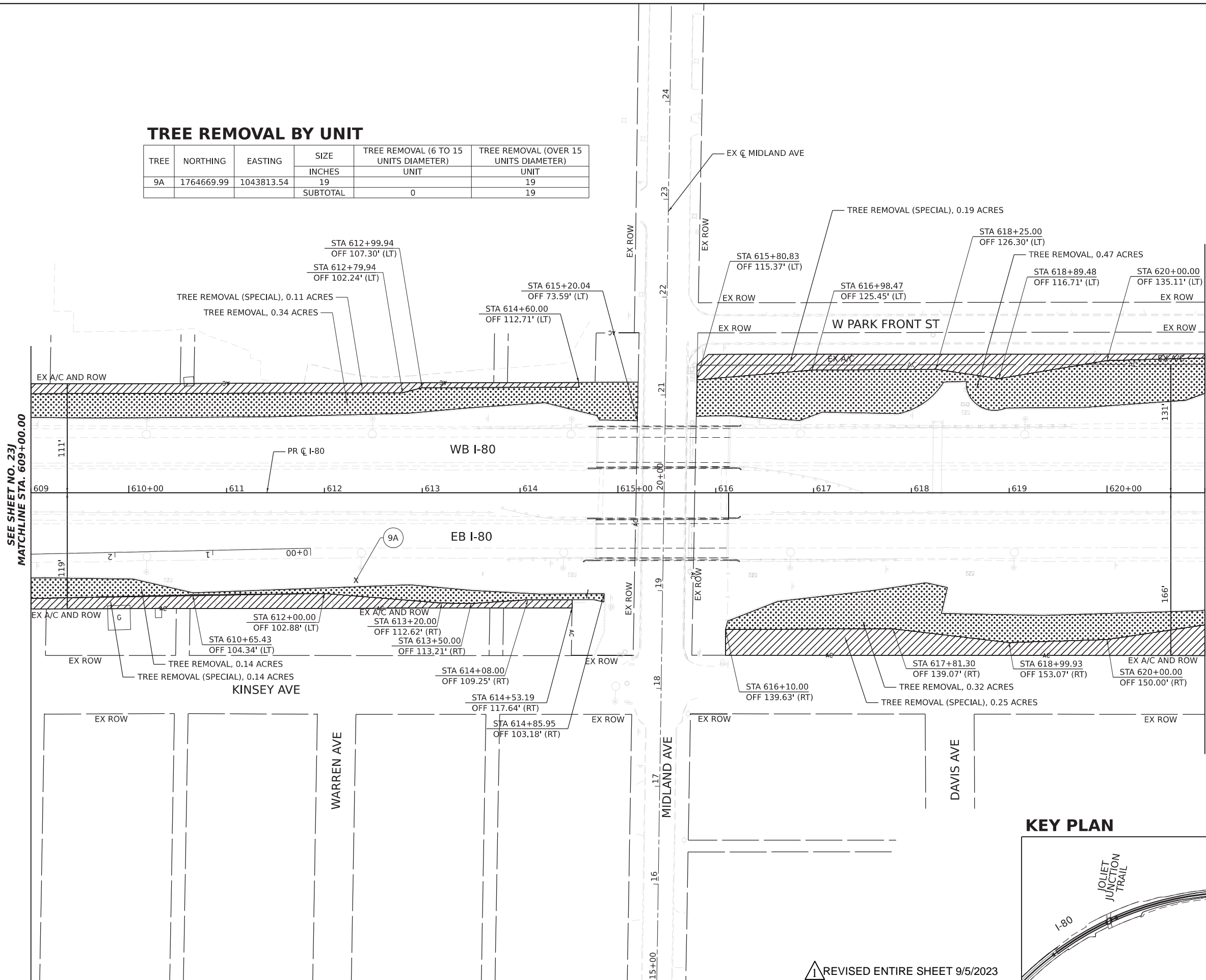
TREE REMOVAL BY UNIT

TREE	NORTHING	EASTING	SIZE	TREE REMOVAL (6 TO 15 UNITS DIAMETER)	TREE REMOVAL (OVER 15 UNITS DIAMETER)
			INCHES	UNIT	UNIT
9A	1764669.99	1043813.54	19		19
			SUBTOTAL	0	19



NOTES:

1. ALL STATION AND OFFSETS ARE MEASURED FROM PR C I-80 UNLESS OTHERWISE NOTED.



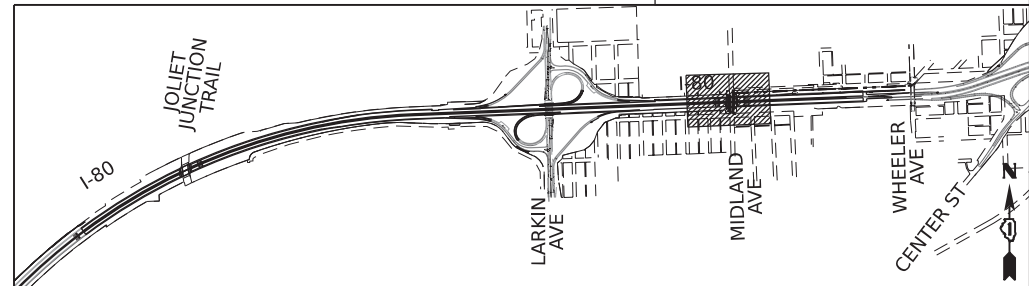
SEE SHEET NO. 23J
MATCHLINE STA. 609+00.00

MATCHLINE STA. 621+00.00
SEE SHEET NO. 23K

REMOVAL LEGEND:

- X TREE REMOVAL
- [Dotted Pattern] TREE REMOVAL, ACRES
- [Hatched Pattern] TREE REMOVAL, ACRES (SPECIAL)

KEY PLAN



REVISI REVISION SYMBOL REVISION DATE
1 REVISED ENTIRE SHEET 9/5/2023

MODEL: I:\PROJECTS\62U61\62U61.dwg
FILE NAME: TREE19

TRANSYSTEMS

USER NAME = \$USERS	DESIGNED -	REVISED - Δ VLJ - 08/23/23
PLOT SCALE = \$SCALE\$	DRAWN -	REVISED -
PLOT DATE = \$DATES	CHECKED -	REVISED -
	DATE -	REVISED -

**STATE OF ILLINOIS
DEPARTMENT OF TRANSPORTATION**

**I-80
TREE REMOVAL PLAN**
SCALE: 1"=50' SHEET 9 OF 11 SHEETS STA. 609+00.00 TO STA. 621+00.00

F.A. RTE.	SECTION	COUNTY	TOTAL SHEETS	SHEET NO.
VAR.	2022 VAR TREE REMOVAL	VARIOUS	25	23K
CONTRACT NO. 62U61				
ILLINOIS FED. AID PROJECT				

