

STATE OF ILLINOIS
DEPARTMENT OF TRANSPORTATION

F.A. RTE.	SECTION	COUNTY	TOTAL SHEETS	SHEET NO.
VAR	D4 INTER. DELINEATOR 2024	VARIOUS	6	1
		ILLINOIS	CONTRACT NO. 68H73	

PROPOSED HIGHWAY PLANS

VARIOUS ROUTES
SECTION D4 INTERSTATE DELINEATORS 2024
PROJECT HSIP-8S4T(893)
SAFETY IMPROVEMENT
VARIOUS COUNTIES

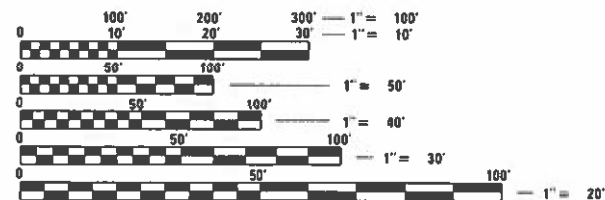
C-94-076-23

INDEX OF SHEETS

- 1 COVER SHEET
- 2 GENERAL NOTES/JOB SPECIFIC NOTES
- 3 SUMMARY OF QUANTITIES
- 4-5 SCHEDULE OF QUANTITIES
- 6 DISTRICT STANDARD

HIGHWAY STANDARDS

635001-02
701426-09
701901-08

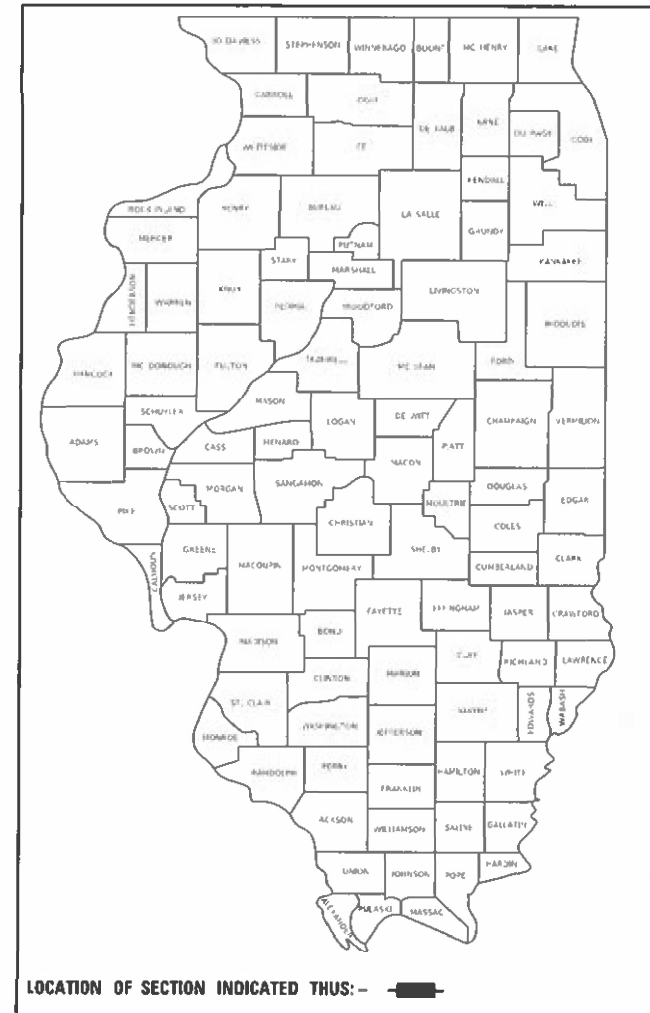
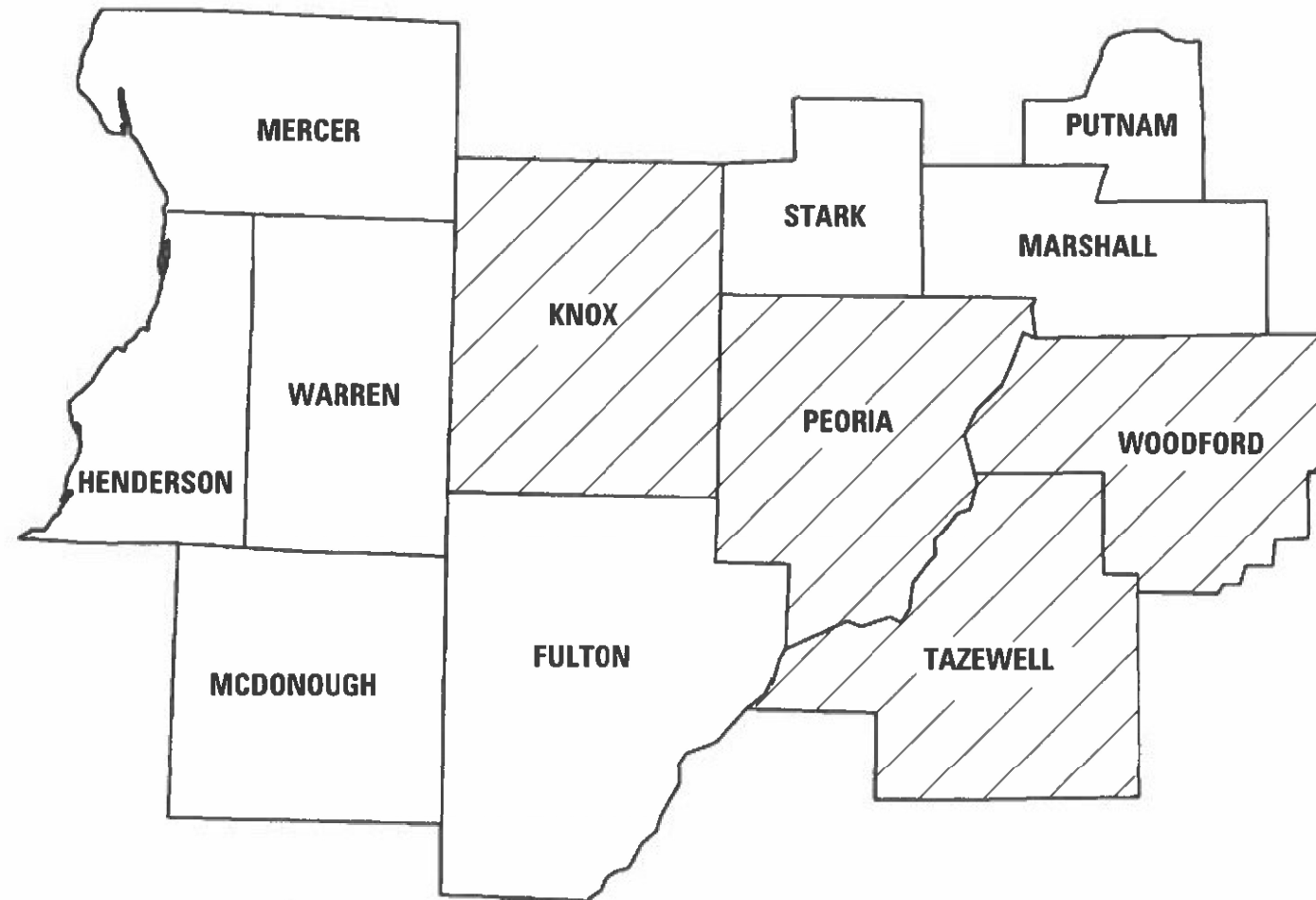


FULL SIZE PLANS HAVE BEEN PREPARED USING STANDARD ENGINEERING SCALES. REDUCED SIZED PLANS WILL NOT CONFORM TO STANDARD SCALES. IN MAKING MEASUREMENTS ON REDUCED PLANS, THE ABOVE SCALES MAY BE USED.

J.U.L.I.E.
JOINT UTILITY LOCATION INFORMATION FOR EXCAVATORS
1-800-892-0123
OR 811

PROJECT ENGINEER ANNA GHIDINA 309-671-4460

CONTRACT NO. 68H73



STATE OF ILLINOIS
DEPARTMENT OF TRANSPORTATION

SUBMITTED JUNE 20 2023
Renail A. Barnett, Sr.
REGIONAL ENGINEER

August 18, 2023 [Signature]
ENGINEER OF DESIGN AND ENVIRONMENT

August 18, 2023 [Signature]
DIRECTOR OF HIGHWAYS PROJECT IMPLEMENTATION

PRINTED BY THE AUTHORITY
OF THE STATE OF ILLINOIS

ADDITIONAL SUPPLEMENTAL TRAFFIC CONTROL

The Department reserves the right at any time to add additional Traffic Control Systems or devices within the active contract limits, by means of an additional contract. All terms of Article 105.08 of the Standard Specifications shall be followed by each Contractor.

RECOVERABLE DELINEATOR INSTALLATION

The contractor shall install the recoverable delineators starting at the beginning mile marker within the respective county. Locations within the rest areas shall be on the ramps into the truck parking areas. Verification of these areas may be obtained from the Operations – Traffic Section.

Model: Default
 File: \\nas01-01-001\pub\user\benfley.com\PHWDOT\Documents\DOT Offices\District 4\Projects\04_68H73\CADD\Drawings\CAD\Drawings\04xxxxx-shc-plan.dgn

USER NAME = Anna.Ghidina	DESIGNED -	REVISED -	STATE OF ILLINOIS DEPARTMENT OF TRANSPORTATION	GENERAL NOTES/JOB SPECIFIC NOTES	F.A. RTE.	SECTION	COUNTY	TOTAL SHEETS	SHEET NO.	
DRAWN -	REVISED -	VAR			D4 INTER. DELINEATOR 2024	VARIOUS	6	2		
PLOT SCALE = 40.0000 ' / in.	CHECKED -	REVISED -			CONTRACT NO. 68H73					
PLOT DATE = 6/27/2023	DATE -	REVISED -			SCALE:	SHEET	OF	SHEETS	STA.	TO STA.

SUMMARY OF QUANTITIES

ITEM NUMBER	ITEM DESCRIPTION	UNIT	TOTAL QUANTITY	VARIOUS COUNTIES	VARIOUS COUNTIES
				URBAN	RURAL
				0021	0021
				90% FEDERAL	90% FEDERAL
				10% STATE	10% STATE
QUANTITY	QUANTITY				
67100100	MOBILIZATION	L SUM	1	0.5	0.5
X2600002	RECOVERABLE DELINEATORS	EACH	3747	1832	1915
X6350120	DELINEATOR REMOVAL	EACH	1029	659	370

MODEL: Default
 FILE NAME: p:\planner-csv-builder\com\PRWDDOT\Documents\DOT Offices\District_4\Projects\04_68H73\CAD\Drawings\CAD\Drawings\04xxxx-sht-plan.dgn

USER NAME = Anna.Ghidina	DESIGNED -	REVISED -
	DRAWN -	REVISED -
PLOT SCALE = 40.0000 ' / in.	CHECKED -	REVISED -
PLOT DATE = 6/27/2023	DATE -	REVISED -

**STATE OF ILLINOIS
DEPARTMENT OF TRANSPORTATION**

SUMMARY OF QUANTITIES

SCALE: SHEET OF SHEETS STA. TO STA.

F.A. RTE.	SECTION	COUNTY	TOTAL SHEETS	SHEET NO.
VAR	D4 INTER. DELINEATOR 2024	VARIOUS	6	3
			CONTRACT NO. 68H73	
			ILLINOIS FED. AID PROJECT	

I-74 Knox County - URBAN							
Direction	Mile Post		Distance (Ft)	Spacing	White	Yellow	Removal
	Begin	End			Each	Each	Each
Eastbound	45	51	31680	400	79		
Westbound	45	51	31680	400	79		
US 34 Interchange							
EB 74 to WB 34			2500	100	4	25	
WB 34 to EB 34			1600	100	4	16	
EB 74 to EB 34			1600	100	4	16	
EB 34 to EB 74			2500	100	4	25	
WB 74 to EB 34			2500	100	4	25	
EB 34 to WB 34			1600	100	4	16	
WB 74 to WB 34			1600	100	4	16	
WB 34 to WB 74			2500	100	4	25	
Main St. (EX 48)							
WB Exit to EB East Main St.			1600	100	4	16	
WB Entrance from East Main			1200	100	4	12	
WB Exit to WB East Main St.			1600	100	4	16	
EB Exit			1000	100	4	10	
EB Entrance			1200	100	4	12	
CH 9 (EX 51)							
WB Exit			2000	100	4	20	
WB Entrance			1800	100	4	18	
EB Exit			2000	100	4	20	
EB Entrance			1900	100	4	19	
			TOTAL		226	307	
			GRAND TOTAL		533		

I-74 Tazewell County - URBAN							
Direction	Mile Post		Distance (Ft)	Spacing	White	Yellow	Removal
	Begin	End			Each	Each	Each
Eastbound	96	104	42240	400	106		106
Westbound	96	104	42240	400	106		106
Pincrest (EX 98)							
WB Entrance			1630	100	4	16	20
WB Exit			2000	100	4	20	24
EB Entrance			3000	100	4	30	34
EB Exit			1948	100	4	19	23
Morton (EX 102)							
WB Entrance			2500	100	4	25	29
WB Exit			2500	100	4	25	29
EB Entrance			2800	100	4	28	32
EB Exit			2400	100	4	24	28
			TOTAL		244	187	431
			GRAND TOTAL		431		

I-74 Knox County - RURAL							
Direction	Mile Post		Distance (Ft)	Spacing	White	Yellow	Removal
	Begin	End			Each	Each	Each
Eastbound	51	68	89760	400	224		
Westbound	51	68	89760	400	224		
EXIT 54							
WB Exit			1200	100	4	25	
WB Entrance			2200	100	4	16	
EB Exit			2000	100	4	16	
EB Entrance			1600	100	4	25	
Spoon River Rest Area							
WB Exit			1300	100	13	13	
WB Entrance			1000	100	10	10	
EB Exit			1400	100	14	14	
EB Entrance			1000	100	10	10	
			TOTAL		511	129	
			GRAND TOTAL		640		

I-74 Woodford County - RURAL							
Direction	Mile Post		Distance (Ft)	Spacing	White	Yellow	Removal
	Begin	End			Each	Each	Each
Eastbound	110	118	42240	400	106		106
Westbound	110	118	42240	400	106		106
Goodfield (EX 112)							
WB Entrance			2000	100	4	20	24
WB Exit			1600	100	4	16	20
EB Entrance			2000	100	4	10	14
EB Exit			1600	100	4	16	20
Mackinaw Dells Rest Area							
WB Entrance			2800	100	4	28	
WB Exit			2800	100	4	28	
EB Entrance			2500	100	4	25	
EB Exit			2800	100	4	28	
			TOTAL		244	171	290
			GRAND TOTAL		415		

I-74 Peoria County - RURAL							
Direction	Mile Post		Distance (Ft)	Spacing	White	Yellow	Removal
	Begin	End			Each	Each	Each
Eastbound	68	71	15840	400	40		40
Westbound	68	71	15840	400	40		40
			TOTAL		80	0	80
			GRAND TOTAL		80		

M:\E:_Default\...
 FILE NAME: ...
 PROJECTS\DOT Office\...
 PROJECTS\DOT Office\...

USER NAME = Anna.Ghiolina	DESIGNED -	REVISED -
PLOT SCALE = 40,0000 ' / in.	DRAWN -	REVISED -
PLOT DATE = 6/27/2023	CHECKED -	REVISED -
	DATE -	REVISED -

**STATE OF ILLINOIS
DEPARTMENT OF TRANSPORTATION**

SCHEDULE OF QUANTITIES

SCALE: SHEET OF SHEETS STA. TO STA.

F.A. RTE.	SECTION	COUNTY	TOTAL SHEETS	SHEET NO.
VAR	D4 INTER. DELINEATOR 2024	VARIOUS	6	4
			CONTRACT NO. 68H73	
		ILLINOIS	FED. AID PROJECT	

I-474 Tazewell County - URBAN							
Direction	Mile Post		Distance (Ft)	Spacing	White Each	Yellow Each	Removal Each
	Begin	End					
Eastbound	9	15	31680	400	79		79
Westbound	9	15	31680	400	79		79
Goodfield (EX 112) Ramp							
WB Entrance			1400	100	4	14	18
WB Exit			1800	100	4	18	22
EB Entrance			2500	100	4	10	14
EB Exit			1200	100	4	12	16
TOTAL					174	54	228
GRAND TOTAL					228		

I-155 Tazewell County - RURAL							
Direction	Mile Post		Distance (Ft)	Spacing	White Each	Yellow Each	Removal Each
	Begin	End					
Northbound	11	31	105600	400	264		
Southbound	11	31	105600	400	264		
Curve 1 NB	20.5	20.7	1056	100	10	10	
Curve 1 SB	20.5	20.7	1056	100	10	10	
Curve 2 NB	19.1	19.4	1584	100	15	15	
Curve 2 SB	19.1	19.4	1584	100	15	15	
I-74/I-155 Interchange							
NB 155 to EB 74			2400	100	4	24	
NB 155 to WB 74			3500	100	4	35	
EB 74 to SB 155			3300	100	4	33	
WB 74 to SB 155			3500	100	4	35	
Birchwood (EX 31)							
SB Entrance			2700	100	4	27	
SB Exit			1850	100	4	18	
NB Entrance			3000	100	4	30	
NB Exit			2150	100	4	21	
Queenwood (EX 30)							
SB Entrance			1800	100	4	18	
SB Exit			1500	100	4	15	
NB Entrance			2000	100	4	20	
NB Exit			2100	100	4	21	
Broadway (EX 28)							
SB Entrance			1950	100	4	19	
SB Exit			1360	100	4	13	
NB Entrance			2000	100	4	20	
NB Exit			1750	100	4	17	
Tremont (EX 25)							
SB Entrance			2000	100	4	20	
SB Exit			1600	100	4	16	
NB Entrance			2300	100	4	23	
NB Exit			1520	100	4	15	
Townline (EX 22)							
SB Entrance			1930	100	4	19	
SB Exit			1700	100	4	17	
NB Entrance			2000	100	4	20	
NB Exit			1850	100	4	18	
Hopedale (EX 19)							
SB Entrance			2500	100	4	25	
SB Exit			1950	100	4	19	
NB Entrance			2000	100	4	20	
NB Exit			1700	100	4	17	
Delavan (EX 15)							
SB Entrance			2000	100	4	20	
SB Exit			1400	100	4	14	
NB Entrance			1500	100	4	15	
NB Exit			2000	100	4	20	
TOTAL					706	714	
GRAND TOTAL					1420		

MODEL: D:\default
 FILE: M:\M&E_Plan\I-155-Tazewell-County-IL\DOT-Office\I-155-Tazewell-County-IL.dgn

USER NAME = Anna.Ghidina	DESIGNED -	REVISED -
	DRAWN -	REVISED -
PLOT SCALE = 40.0000 ' / in.	CHECKED -	REVISED -
PLOT DATE = 6/27/2023	DATE -	REVISED -

**STATE OF ILLINOIS
DEPARTMENT OF TRANSPORTATION**

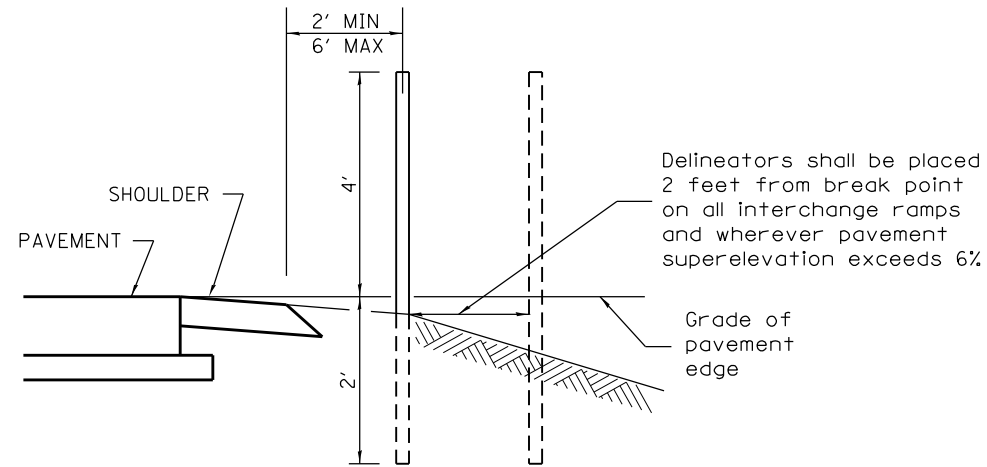
SCHEDULE OF QUANTITIES

SCALE: SHEET OF SHEETS STA. TO STA.

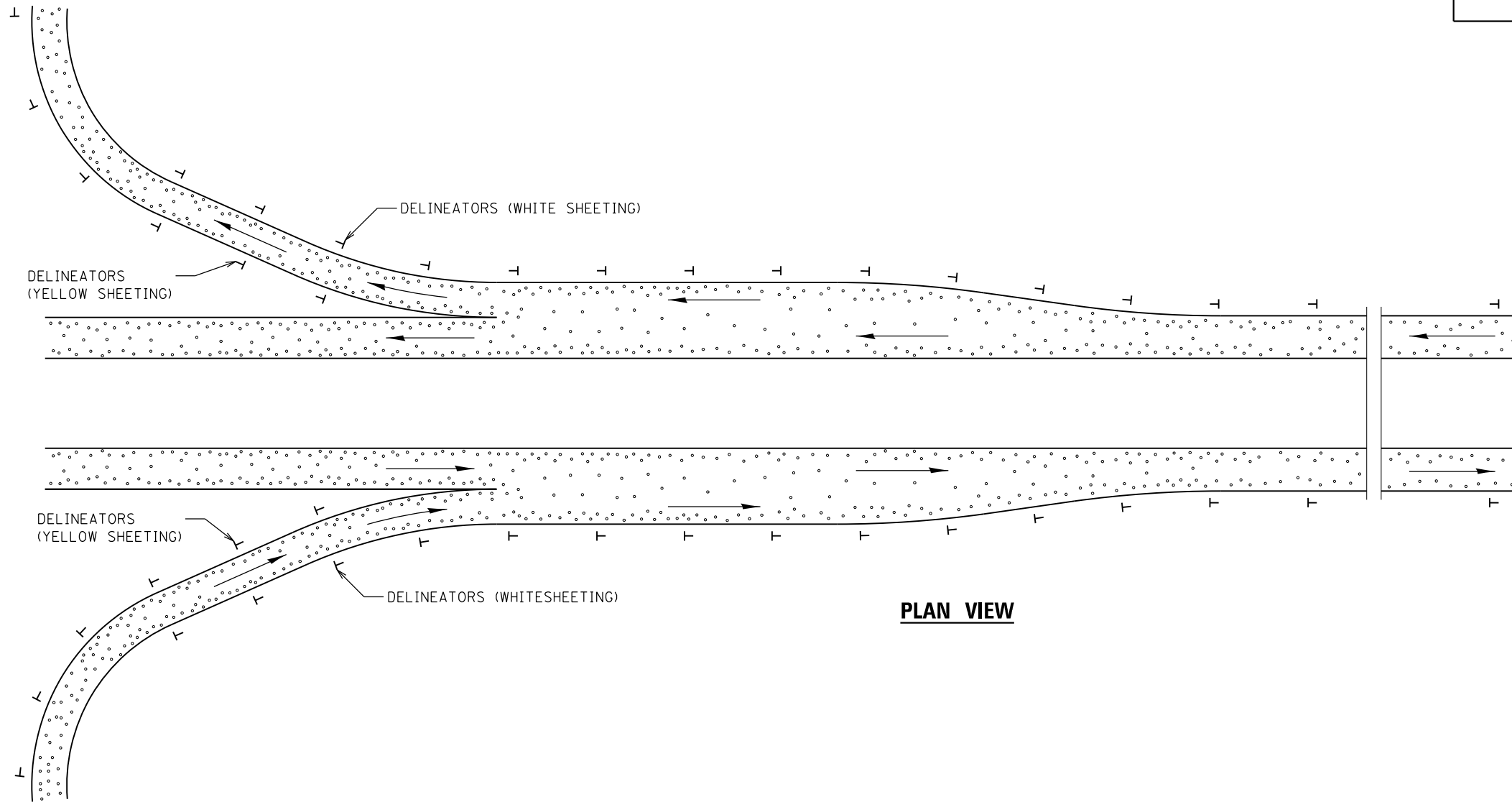
F.A. RTE.	SECTION	COUNTY	TOTAL SHEETS	SHEET NO.
VAR.	D4 INTER. DELINEATOR 2024	VARIOUS	6	5
			CONTRACT NO. 68H73	
		ILLINOIS	FED. AID PROJECT	

**SPACING FOR
RECOVERABLE DELINEATORS
ON HORIZONTAL CURVES**

LOCATION	RADIUS OF CURVE (FEET)	SPACING ON CURVE (FEET)



SECTIONAL VIEW



PLAN VIEW

GENERAL NOTES

Delineators on mainline shall be placed at 400' spacing on tangent sections, and 200' spacing on curved sections.

Delineators on ramps, shall be placed as follows:
 1. On tangent sections, acceleration lanes and deceleration lanes at maximum spacing of 100'.
 2. On outside of all curved sections.
 (See table above for spacing)

DESIGNER NOTES:
 1. USE DISTRICT SPECIAL PROVISION FOR RECOVERABLE DELINEATORS WHEN USING THIS CADD STANDARD.
 2. USE ON INTERSTATE AND EXPRESSWAY FACILITIES.

08-25-15	NEW STANDARD	R.D.									
STATE OF ILLINOIS DEPARTMENT OF TRANSPORTATION						RECOVERABLE DELINEATORS DETAIL	F.A. RTE.	SECTION	COUNTY	TOTAL SHEETS	SHEET NO.
							VAR D4 INTER. DELINEATOR 2024	VARIOUS	6	6	
						NOT TO SCALE	CADD STD. 635002-D4	CONTRACT NO. 68H73			
							FED. ROAD DIST. NO.	ILLINOIS FED. AID PROJECT			