

SUMMARY OF QUANTITIES

PEORIA COUNTY
 CONST. TYPE
 CODE 0021
 SAFETY FUNDS
 90% FEDERAL
 10% STATE
 URBAN

CODE	ITEM DESCRIPTION	UNIT	TOTAL QTY.	QTY.
42400100	PORTLAND CEMENT CONCRETE SIDEWALK 4 INCH	SQ FT	38.0	38.0
44000600	SIDEWALK REMOVAL	SQ FT	48.0	48.0
67100100	MOBILIZATION	L SUM	1.0	1.0
81028320	UNDERGROUND CONDUIT, PVC, 1" DIA.	FOOT	590.0	590.0
81028350	UNDERGROUND CONDUIT, PVC, 2" DIA.	FOOT	536.0	536.0
81400700	HANDHOLE, PORTLAND CEMENT CONCRETE	EACH	3.0	3.0
86300400	CONTROLLER CABINET TYPE IV	EACH	1.0	1.0
87301225	ELECTRIC CABLE IN CONDUIT, SIGNAL NO. 14 3C	FOOT	11842.5	11842.5
87301245	ELECTRIC CABLE IN CONDUIT, SIGNAL NO. 14 5C	FOOT	9346.0	9346.0
87301255	ELECTRIC CABLE IN CONDUIT, SIGNAL NO. 14 7C	FOOT	995.0	995.0
87301900	ELECTRIC CABLE IN CONDUIT, EQUIPMENT GROUNDING CONDUCTOR, NO. 6 1C	FOOT	839.5	839.5
87502450	TRAFFIC SIGNAL POST, GALVANIZED STEEL 11 FT.	EACH	14.0	14.0
87502500	TRAFFIC SIGNAL POST, GALVANIZED STEEL 16 FT.	EACH	1.0	1.0
87800100	CONCRETE FOUNDATION, TYPE A	FOOT	45.0	45.0
87900100	DRILL EXISTING FOUNDATION	EACH	7.0	7.0
87900200	DRILL EXISTING HANDHOLE	EACH	61.0	61.0
88102825	PEDESTRIAN SIGNAL HEAD, POLYCARBONATE, LED, 1-FACE, BRACKET MOUNTED WITH COUNT DOWN TIMER	EACH	37.0	37.0



MODEL: D:\m\h\...
 FILE NAME: S:\CEN\W\W\ORD\DESIGN\AM\hanson\# AP5168176 (Peoria_AIS) (final_06-29-23).dgn

USER NAME = trevor.hanson	DESIGNED -	REVISED -
PLOT SCALE = 23.8272 ' / in.	DRAWN -	REVISIED -
PLOT DATE = 6/29/2023	CHECKED -	REVISIED -
	DATE -	REVISIED -

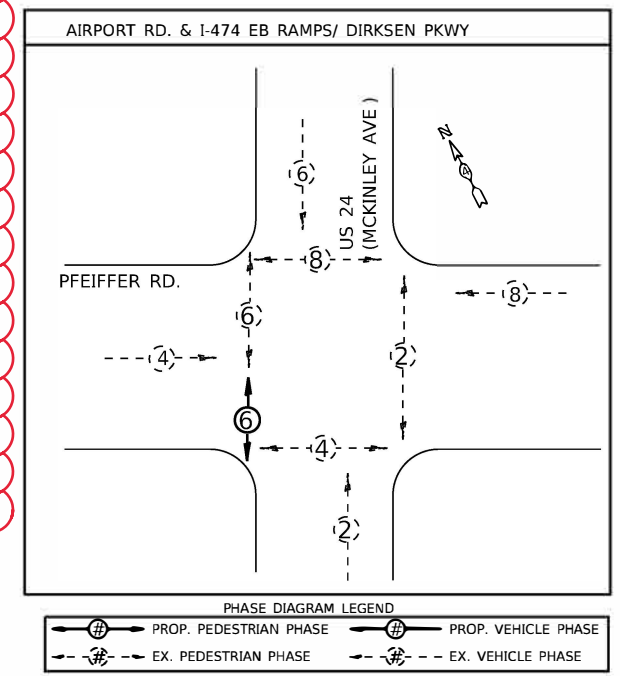
STATE OF ILLINOIS
 DEPARTMENT OF TRANSPORTATION

SUMMARY OF QUANTITIES	
SCALE:	SHEET OF SHEETS STA. TO STA.

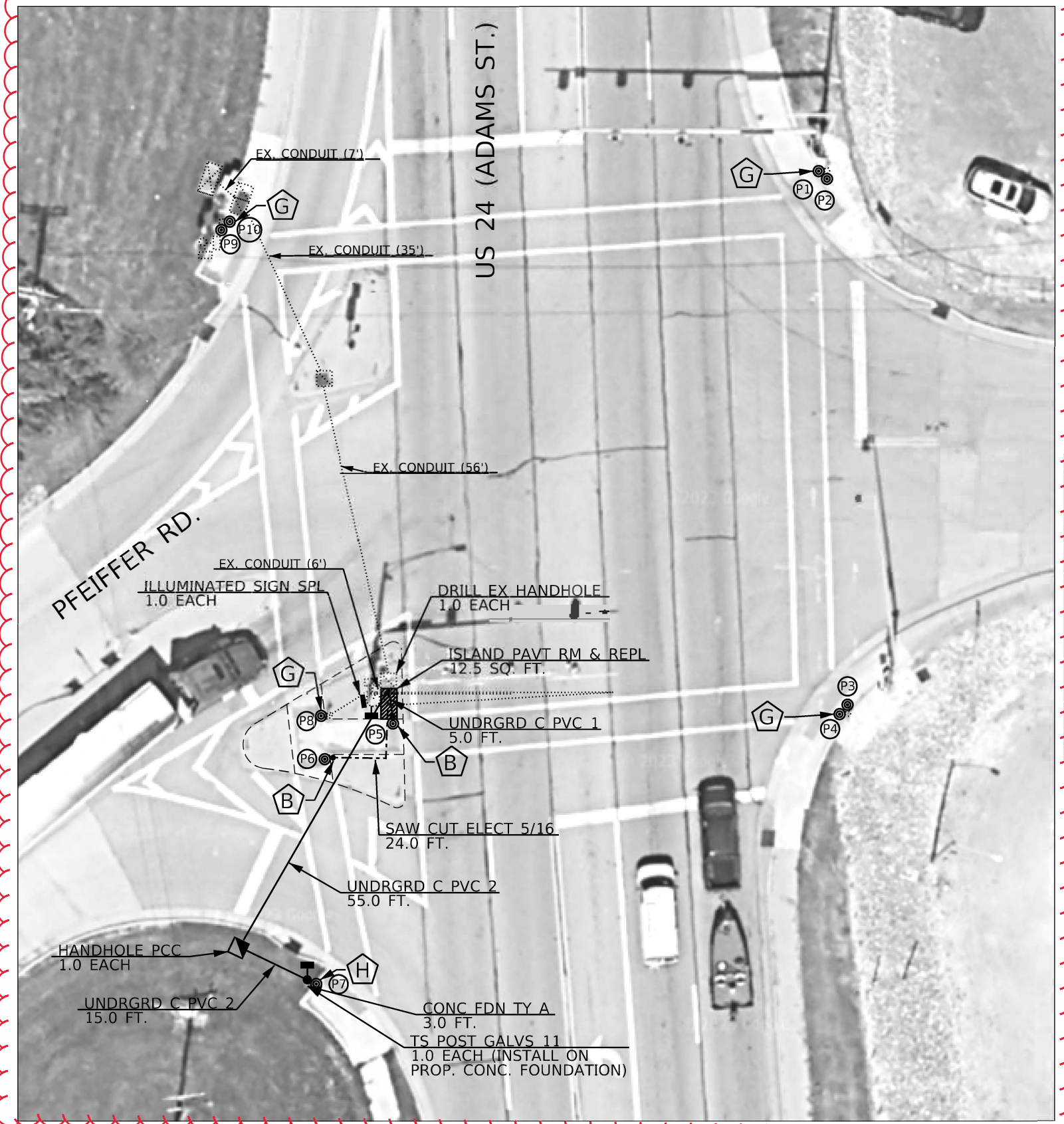
F.A.P. RTE.	SECTION	COUNTY	TOTAL SHEETS	SHEET NO.
VAR.	D4 ADA PUSHBUTTONS 2024	PEORIA	80	5
			CONTRACT NO. 68H76	
ILLINOIS FED. AID PROJECT				

BILL OF MATERIALS		
US 24 (ADAMS) & PFEIFFER		
ITEM DESCRIPTION	UNIT	QTY.
ACCESSIBLE PEDESTRIAN SIGNALS	EACH	10.0
PEDESTRIAN PUSH-BUTTON POST (NO FOUNDATION)	EACH	2.0
ANCHOR BOLT SET, 1/2 DIAMETER, WITH WEDGE ANCHORS	EACH	2.0
THHN WIRE ENCASED IN PVC TUBE, NO. 19/27 AWG	FOOT	91.0
SAW CUT FOR ELECTRICAL CABLE INSTALLATION, 5/16"	FOOT	24.0
DRILL EXISTING HANDHOLE	EACH	1.0
UNDERGROUND CONDUIT, PVC, 1" DIA.	FOOT	5.0
UNDERGROUND CONDUIT, PVC, 2" DIA.	FOOT	70.0
ELECTRIC CABLE IN CONDUIT, SIGNAL NO. 14 3C	FOOT	506.5
ELECTRIC CABLE IN CONDUIT, SIGNAL NO. 14 5C	FOOT	374.5
ILLUMINATED SIGN (SPECIAL)	EACH	1.0
ELECTRIC CABLE IN CONDUIT, EQUIPMENT GROUNDING CONDUCTOR, NO. 6 1C	FOOT	95.5
TRAFFIC SIGNAL POST, GALVANIZED STEEL 11 FT.	EACH	1.0
CONCRETE FOUNDATION, TYPE A	FOOT	3.0
PEDESTRIAN SIGNAL HEAD, POLYCARBONATE, LED, 1-FACE, BRACKET MOUNTED WITH COUNT DOWN TIMER	EACH	2.0
ISLAND PAVEMENT REMOVAL AND REPLACEMENT	SQ FT	12.5
HANDHOLE, PORTLAND CEMENT CONCRETE	EACH	1.0

APS SCHEDULE							
US 24 (ADAMS) & PFEIFFER							
LABEL	LOCATION	INSTALLATION TYPE	MOUNTING BRACKET	CROSSING	WALK INDICATION	WIRING NOTES	NOTES
P1	NE QUAD	EX. PEDESTRIAN PUSHBUTTON POST	DUAL	PFEIFFER	SPEECH	RE-USE EXISTING WIRE	
P2	NE QUAD	EX. PEDESTRIAN PUSHBUTTON POST	DUAL	ADAMS	SPEECH	RE-USE EXISTING WIRE	
P3	SE QUAD	EX. PEDESTRIAN PUSHBUTTON POST	DUAL	ADAMS	SPEECH	RE-USE EXISTING WIRE	
P4	SE QUAD	EX. PEDESTRIAN PUSHBUTTON POST	DUAL	PFEIFFER	SPEECH	RE-USE EXISTING WIRE	
P5	EB RT ISLAND	PROP. PEDESTRIAN PUSH-BUTTON POST (NO FOUNDATION)	SINGLE	ADAMS	TO NE	RE-USE EXISTING WIRE (INSTALL IN PROP. CONDUIT)	PROP. CONDUIT FROM PROP. PUSHBUTTON POST TO EX. HANDHOLE
P6	EB RT ISLAND	PROP. PEDESTRIAN PUSH-BUTTON POST (NO FOUNDATION)	SINGLE	PFEIFFER RIGHT TURN LANE	TO NE	INSTALL NEW WIRE FROM APS TO CONTROLLER CABINET	SAW CUT FROM PROP. PUSHBUTTON POST TO EX. HANDHOLE
P7	SW QUAD	PROP. TS POST	SINGLE	PFEIFFER RIGHT TURN LANE	TO NE	INSTALL NEW WIRE FROM APS TO CONTROLLER CABINET	PROP. CONDUIT FROM PROP. TS POST TO PROP. HANDHOLE
P8	EB RT ISLAND	EX. PEDESTRIAN PUSHBUTTON POST	SINGLE	PFEIFFER	TO NE	RE-USE EXISTING WIRE	
P9	NW QUAD	EX. PEDESTRIAN PUSHBUTTON POST	DUAL	ADAMS	SPEECH	RE-USE EXISTING WIRE	
P10	NW QUAD	EX. PEDESTRIAN PUSHBUTTON POST	DUAL	PFEIFFER	SPEECH	RE-USE EXISTING WIRE	



- APS LEGEND**
- A** PROP. APS INSTALLED ON PROP. PEDESTRIAN PUSHBUTTON POST (NO FOUNDATION) ON EX. SIDEWALK, WITH ANCHOR BOLT SET, 1/2 DIAMETER, WITH WEDGE ANCHORS
 - B** PROP. APS INSTALLED ON PROP. PEDESTRIAN PUSHBUTTON POST (NO FOUNDATION) ON EX. ISLAND SURFACE, WITH ANCHOR BOLT SET, 1/2 DIAMETER, WITH WEDGE ANCHORS
 - C** PROP. APS INSTALLED ON PROP. PEDESTRIAN PUSHBUTTON POST (NO FOUNDATION) ON EX. SIDEWALK CURB, WITH ANCHOR BOLT SET 1/2 DIAMETER, WITH WEDGE ANCHORS
 - D** PROP. APS INSTALLED ON PROP. PEDESTRIAN PUSHBUTTON POST (CONCRETE FOUNDATION)
 - E** PROP. APS INSTALLED ON EX. MAST ARM STRAIN POLE
 - F** PROP. APS INSTALLED ON EX. TRAFFIC SIGNAL POST OR LIGHT POLE
 - G** PROP. APS INSTALLED ON EX. PEDESTRIAN PUSHBUTTON POST
 - H** PROP. APS INSTALLED ON PROP. TRAFFIC SIGNAL POST



NOTE:
 1. THE CONTRACTOR SHALL INSTALL THE 3/C WIRE FOR THE ILLUMINATED SIGN (SPECIAL) ON A LOAD SWITCH IN THE CONTROLLER CABINET AS DIRECTED BY THE IDOT TRAFFIC ENGINEER.

LIMESTONE TOWNSHIP
 40.639336, -89.652283

USER NAME = trevor.hanson	DESIGNED -	REVISED - 09-11-23 TIH
PLOT SCALE = 23.8272' / in.	DRAWN -	REVISED -
PLOT DATE = 9/11/2023	CHECKED -	REVISED -
	DATE -	REVISED -

STATE OF ILLINOIS
DEPARTMENT OF TRANSPORTATION

PROPOSED ACCESSIBLE PEDESTRIAN SIGNALS
US 24 (ADAMS ST.) & PFEIFFER RD. - BARTONVILLE

F.A.P. RTE.	SECTION	COUNTY	TOTAL SHEETS	SHEET NO.
VAR.	D4 ADA PUSHBUTTONS 2024	PEORIA	80	76
			CONTRACT NO. 68H76	
ILLINOIS / FED. AID PROJECT				

MODEL: Default
 FILE NAME: S:\CEN\HW\03\035P_Ashhanson\#_Completed_Contract\035P_68H76 and 68H77\68H76 (Irons APS) (revision 08-07-23).dgn

NOT TO SCALE