

STATE OF ILLINOIS
DEPARTMENT OF TRANSPORTATION

F.A. RTE.	SECTION	COUNTY	TOTAL SHEETS	SHEET NO.
VAR	D7 EMULSION TANK 2024	RICHLAND	6	1
		ILLINOIS	CONTRACT NO. 74C38	

FOR INDEX OF SHEETS, SEE SHEET NO. 2

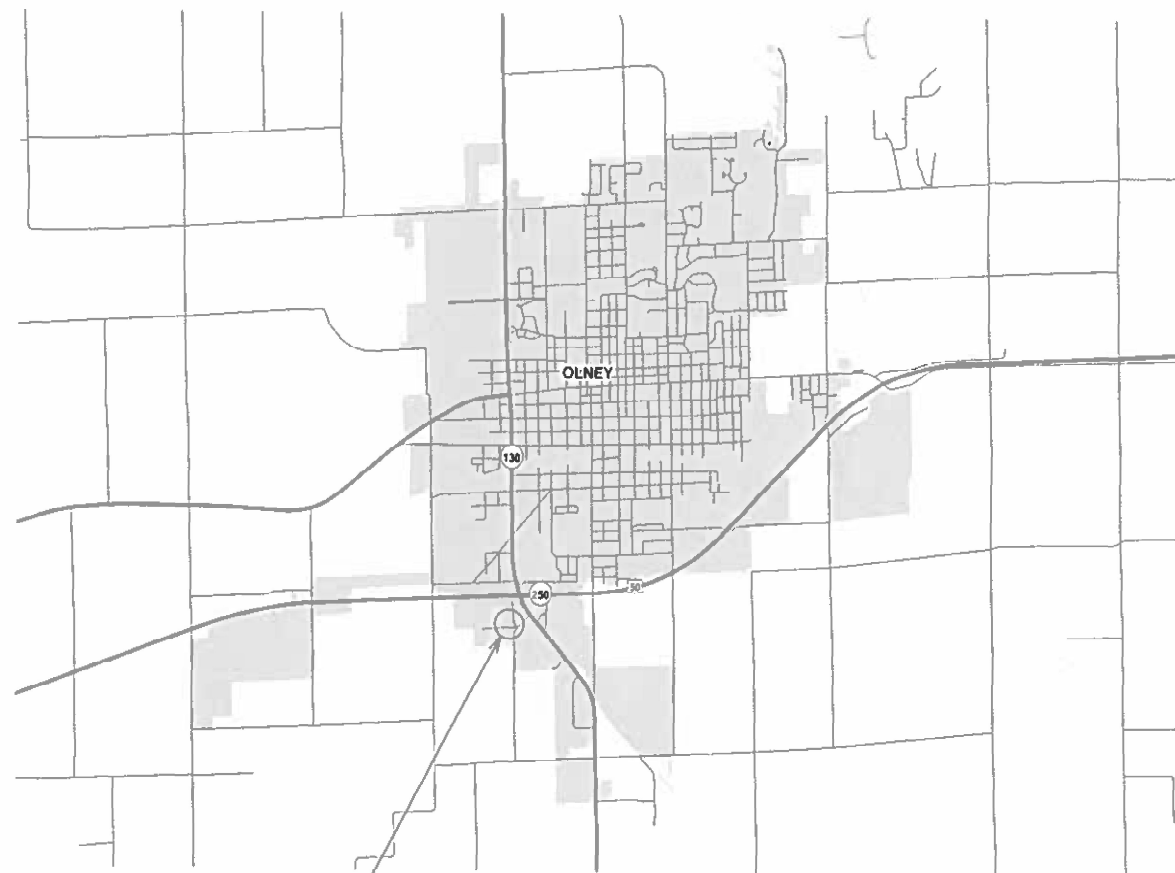
**PROPOSED
HIGHWAY PLANS**

**OLNEY MAINTENANCE YARD
SECTION D7 EMULSION TANK 2024**

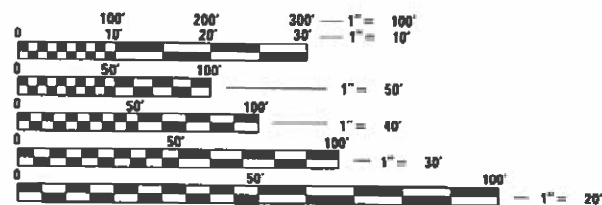
**EMULSION TANK INSTALLATION
RICHLAND COUNTY**

C-97-110-23

D-97-081-23



OLNEY MAINTENANCE YARD
3964 N. GENTRY ROAD



FULL SIZE PLANS HAVE BEEN PREPARED USING STANDARD ENGINEERING SCALES. REDUCED SIZED PLANS WILL NOT CONFORM TO STANDARD SCALES. IN MAKING MEASUREMENTS ON REDUCED PLANS, THE ABOVE SCALES MAY BE USED.

J.U.L.I.E.
JOINT UTILITY LOCATION INFORMATION FOR EXCAVATORS
1-800-892-0123
OR 811

PROJECT ENGINEER DEWAYNE SEACHRIST
PROJECT MANAGER ROBERT GREUEL

CONTRACT NO. 74C38

STATE OF ILLINOIS
DEPARTMENT OF TRANSPORTATION

SUBMITTED JUNE 14 2023
Jeffrey P. Meyer
REGIONAL ENGINEER

August 18, 2023
Scott A. Etkin
ENGINEER OF DESIGN AND ENVIRONMENT

August 18, 2023
Stephen M. Smith
DIRECTOR OF HIGHWAYS PROJECT IMPLEMENTATION

**PRINTED BY THE AUTHORITY
OF THE STATE OF ILLINOIS**

INDEX OF SHEETS

SHEET NO.	DESCRIPTION
1	COVER SHEET
2	INDEX OF SHEETS, STANDARDS AND GENERAL NOTES
3	SUMMARY OF QUANTITIES
4	PLAN SHEET
5	DETAIL SHEET
6	SCHEMATIC SHEET

STANDARDS

000001-08	STANDARD SYMBOLS, ABBREVIATIONS AND PATTERNS
001001-02	AREAS OF REINFORCEMENT BARS
001006	DECIMAL OF AN INCH AND OF A FOOT
701901-08	TRAFFIC CONTROL DEVICES

GENERAL NOTES

THE LOCATION OF THIS PROJECT IS THE OLNEY MAINTENANCE YARD AT 3964 NORTH GENTRY ROAD, OLNEY, ILLINOIS.

CONTRACTOR SHALL COORDINATE LOCATION AND ORIENTATION WITH ILLINOIS DEPARTMENT OF TRANSPORTATION (IDOT). CONTRACTOR SHALL COORDINATE WITH RESIDENT ENGINEER AND OR AN ELECTRICAL CONTRACTOR TO DETERMINE LOCATIONS OF ANY CONDUIT THROUGH CONCRETE. CONTRACTOR SHALL COORDINATE WITH THE TANK MANUFACTURER TO DETERMINE LOCATIONS OF TANK PADS AND ANY SPECIAL REQUIREMENTS FOR SECURING THE TANK TO THE PADS.

THE EXISTING EQUIPMENT, VEHICLES, AND MATERIALS LOCATED NEAR THE WORK SITE IN THE YARD WILL BE MOVED AND REPLACED BY STATE FORCES TO ACCOMMODATE THE WORK.

QUANTITIES SHOWN ON THE PLANS ARE FOR ESTIMATION PURPOSES. IT IS THE RESPONSIBILITY OF THE CONTRACTOR TO VERIFY QUANTITIES.

DRILLED SHAFTS SHALL BE INCIDENTAL TO THE CONCRETE STRUCTURE AND SHALL BE INCLUDED IN THE COST OF THE CONCRETE FOR CONCRETE STRUCTURES.

TRENCH BACKFILL SHALL BE DONE ACCORDING TO ARTICLE 208.1 AND 208.2 OF THE STANDARD SPECIFICATIONS FOR ROADS AND BRIDGE CONSTRUCTION BOOK. THE BASIS OF OF PAYMENT SHALL BE INCLUDED IN THE COST OF THE CONDUIT.

THE THREE INCH SCHEDULE 40 PVC DRAIN WITH A THREE INCH STAINLESS STEEL BALL VALVE AND THE THREE INCH QUICK COUPLER SHALL BE INCLUDED IN THE COST OF THE CONCRETE IN THE CONCRETE STRUCTURE.

Rev. SK

MODEL: Default
FILE NAME: p:\w\idot\pw\berkeley.com\FWIDOT\Documents\DOT_Offices\District_7\Projects\74C38\CADD\18\CAD\Drawings\0774C38-01-0000.dgn

USER NAME = jessica.hille	DESIGNED -	REVISED -	STATE OF ILLINOIS DEPARTMENT OF TRANSPORTATION	INDEX OF SHEETS AND GENERAL NOTES	F.A. RTE.	SECTION	COUNTY	TOTAL SHEETS	SHEET NO.	
PLOT SCALE = 100.0000' / in.	DRAWN -	REVISED -			VAR	D7 EMULSION TANK 2024	RICHLAND	6	2	
PLOT DATE = 7/5/2023	CHECKED -	REVISED +			CONTRACT NO. 74C38					
	DATE -	REVISED +			ILLINOIS FED. AID PROJECT					
					SCALE:	SHEET	OF	SHEETS	STA.	TO STA.

SUMMARY OF QUANTITIES			TOTAL QUANTITIES	CONSTRUCTION TYPE CODE		
CODE NO	ITEM	UNIT		0044 100% STATE URBAN		
50300225	CONCRETE STRUCTURES	CU YD	15.1	15.1		
50800205	REINFORCEMENT BARS, EPOXY COATED	POUND	2130	2130		
67100100	MOBILIZATION	L SUM	1	1		
81028320	UNDERGROUND CONDUIT, PVC, 1" DIA.	FOOT	150	150		
81028330	UNDERGROUND CONDUIT, PVC, 1 1/4" DIA.	FOOT	150	150		
81100300	CONDUIT ATTACHED TO STRUCTURE, 1" DIA., GALVANIZED STEEL	FOOT	10	10		
81100400	CONDUIT ATTACHED TO STRUCTURE, 1 1/4" DIA., GALVANIZED STEEL	FOOT	10	10		
81702381	ELECTRIC CABLE IN CONDUIT, 600V (XLP-TYPE USE) 2-1/C NO. 1, 1/C NO. 6 GROUND	FOOT	166	166		
81702418	ELECTRIC CABLE IN CONDUIT, 600V (XLP-TYPE USE) 3-1/C NO. 6, 1/C NO. 8 GROUND	FT	166	166		
X1200131	EMULSION TANK	L SUM	1	1		
X1400517	SAFETY SWITCH, 60AMP, NEMA 3R, 2-POLE FUSED	EACH	1	1		
X1400518	SAFETY SWITCH, 100AMP, NEMA 3R, 2-POLE FUSED	EACH	1	1		

SUMMARY OF QUANTITIES			TOTAL QUANTITIES	CONSTRUCTION TYPE CODE		
CODE NO	ITEM	UNIT		0044 100% STATE URBAN		
X8010260	60 AMP CIRCUIT BREAKER, 2 POLE	EACH	1	1		
XP000136	100A CIRCUIT BREAKER, 2P	EACH	1	1		

REV. - MS

MODEL: C:\p1\...
 FILE NAME: ...

USER NAME = jessica.hille	DESIGNED -	REVISED -
PLOT SCALE = 100.0000' / in.	DRAWN -	REVISED -
PLOT DATE = 7/5/2023	CHECKED -	REVISED -
	DATE -	REVISED -

**STATE OF ILLINOIS
DEPARTMENT OF TRANSPORTATION**

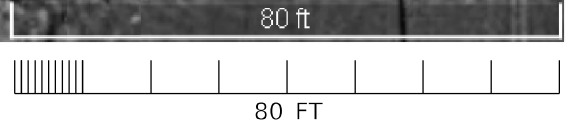
SUMMARY OF QUANTITIES

SCALE: SHEET OF SHEETS STA. TO STA.

F.A. RTE.	SECTION	COUNTY	TOTAL SHEETS	SHEET NO.
VAR	D7 EMULSION TANK 2024	RICHLAND	6	3
			CONTRACT NO. 74C38	
ILLINOIS FED. AID PROJECT				



Google Earth



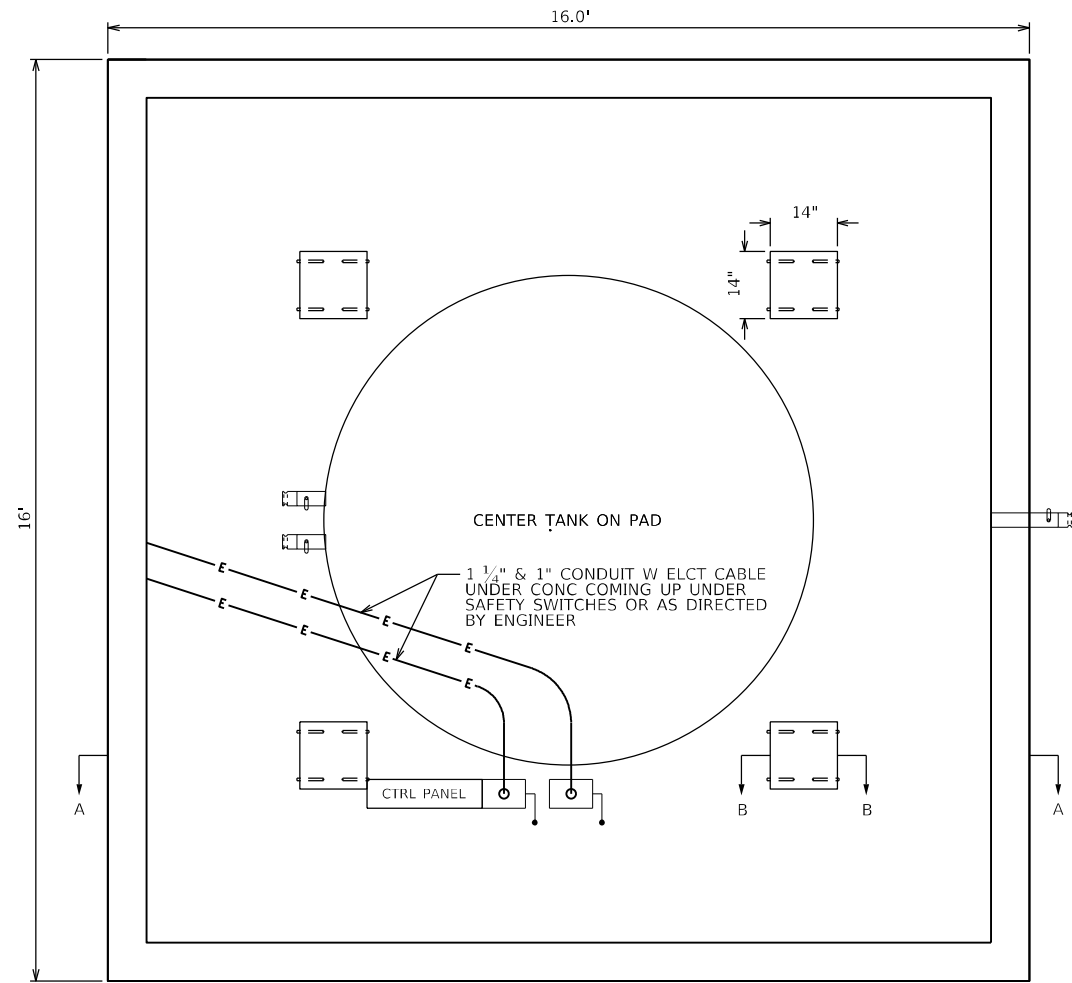
MODEL: Default
 FILE: \\mifs-pw-beadley.com\P\INDOT\Documents\INDOT Offices\District 7\Projects\74C38\CADDData\CAD\Sheets\74C38-eh-draw1.dgn

USER NAME = jessica.hille	DESIGNED -	REVISED -
	DRAWN -	REVISED -
PLOT SCALE = 100,0000' / in.	CHECKED -	REVISED -
PLOT DATE = 7/5/2023	DATE -	REVISED -

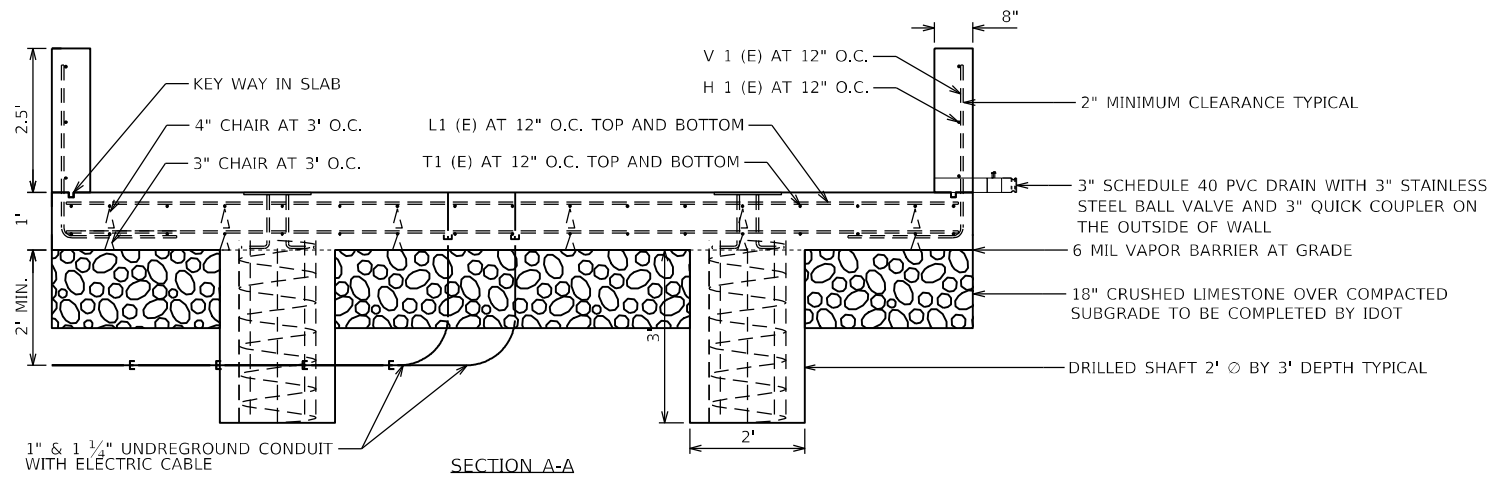
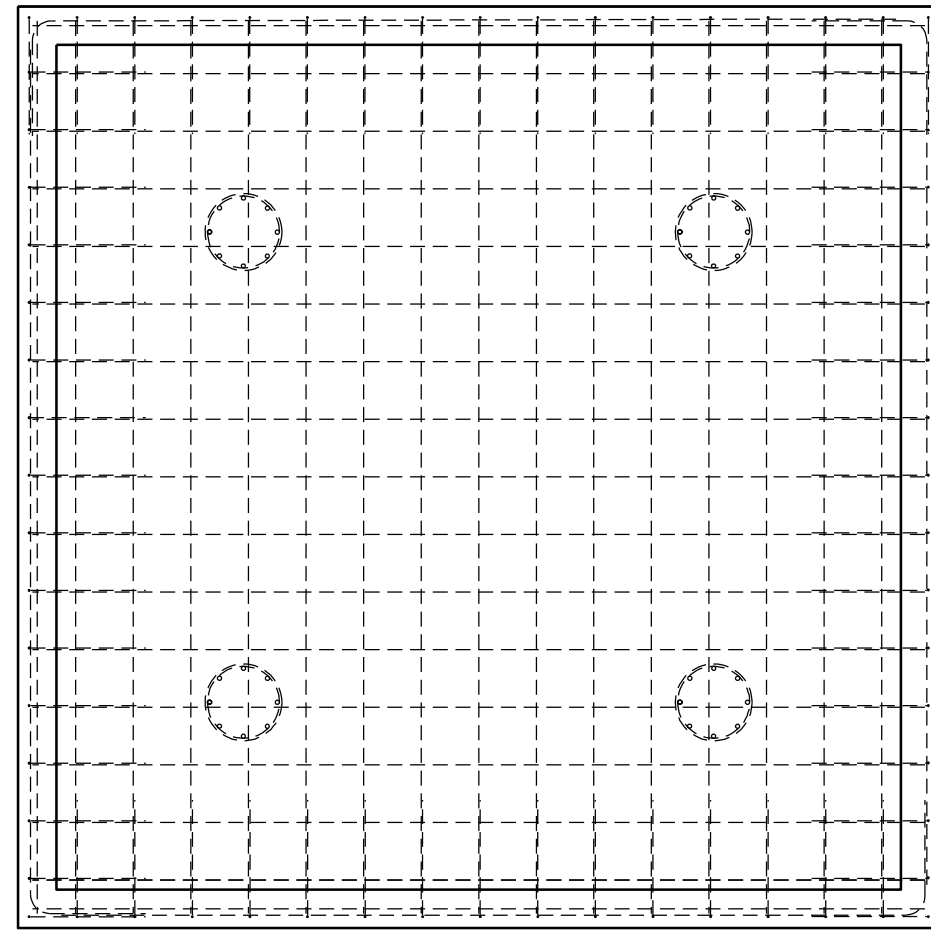
**STATE OF ILLINOIS
DEPARTMENT OF TRANSPORTATION**

PLAN SHEET			
SCALE:	SHEET	OF SHEETS	STA. TO STA.

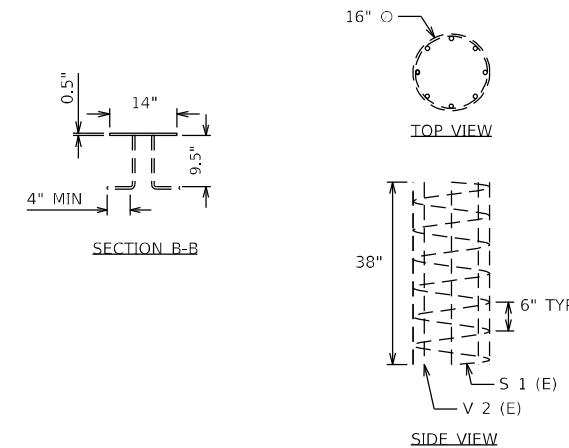
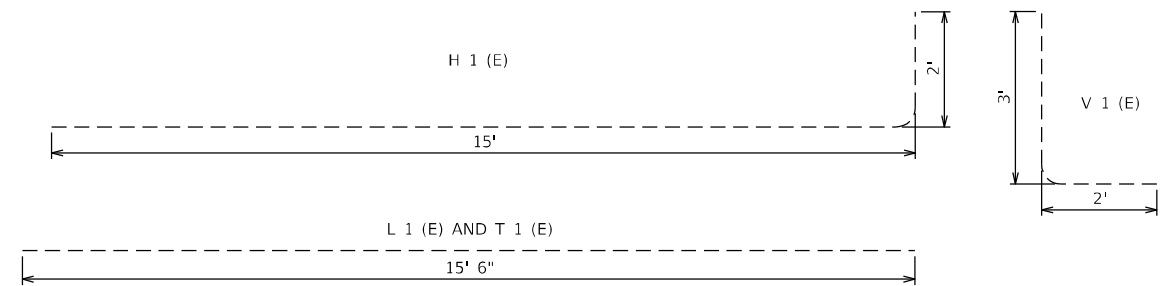
F.A. RTE.	SECTION	COUNTY	TOTAL SHEETS	SHEET NO.
VAR	D7 EMULSION TANK 2024	RICHLAND	6	4
			CONTRACT NO. 74C38	
		ILLINOIS	FED. AID PROJECT	



PLAN VIEW



SECTION A-A



BILL OF MATERIAL				
BAR	NO.	SIZE	LENGTH	SHAPE
H 1 (E)	12	#5	17'-0"	
L 1 (E)	34	#5	15'-6"	
S 1 (E)	4	#3	27'-4"	
T 1 (E)	34	#5	15'-6"	
V 1 (E)	66	#5	5'-0"	
V 2 (E)	32	#7	3"-2"	
REINFORCEMENT BARS, EPOXY COATED			POUND	2,130
CONCRETE STRUCTURE FOR EMULSION TANK			CU YD	15.1

MODEL: Default
 FILE: 3dmodel.pia
 PROJECT: 74C38\CADD\Drawings\74C38-01.dwg
 PLOT DATE: 7/5/2023

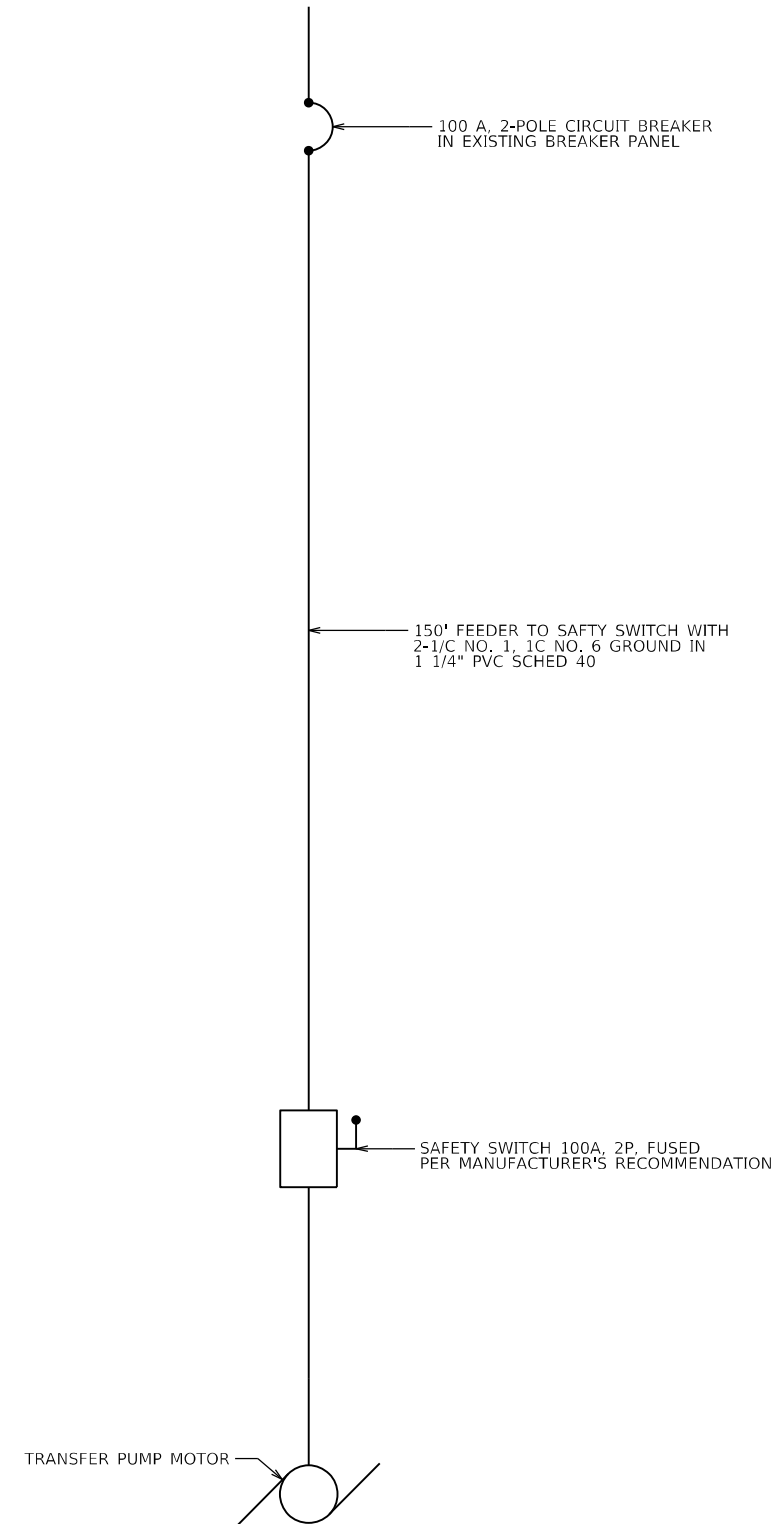
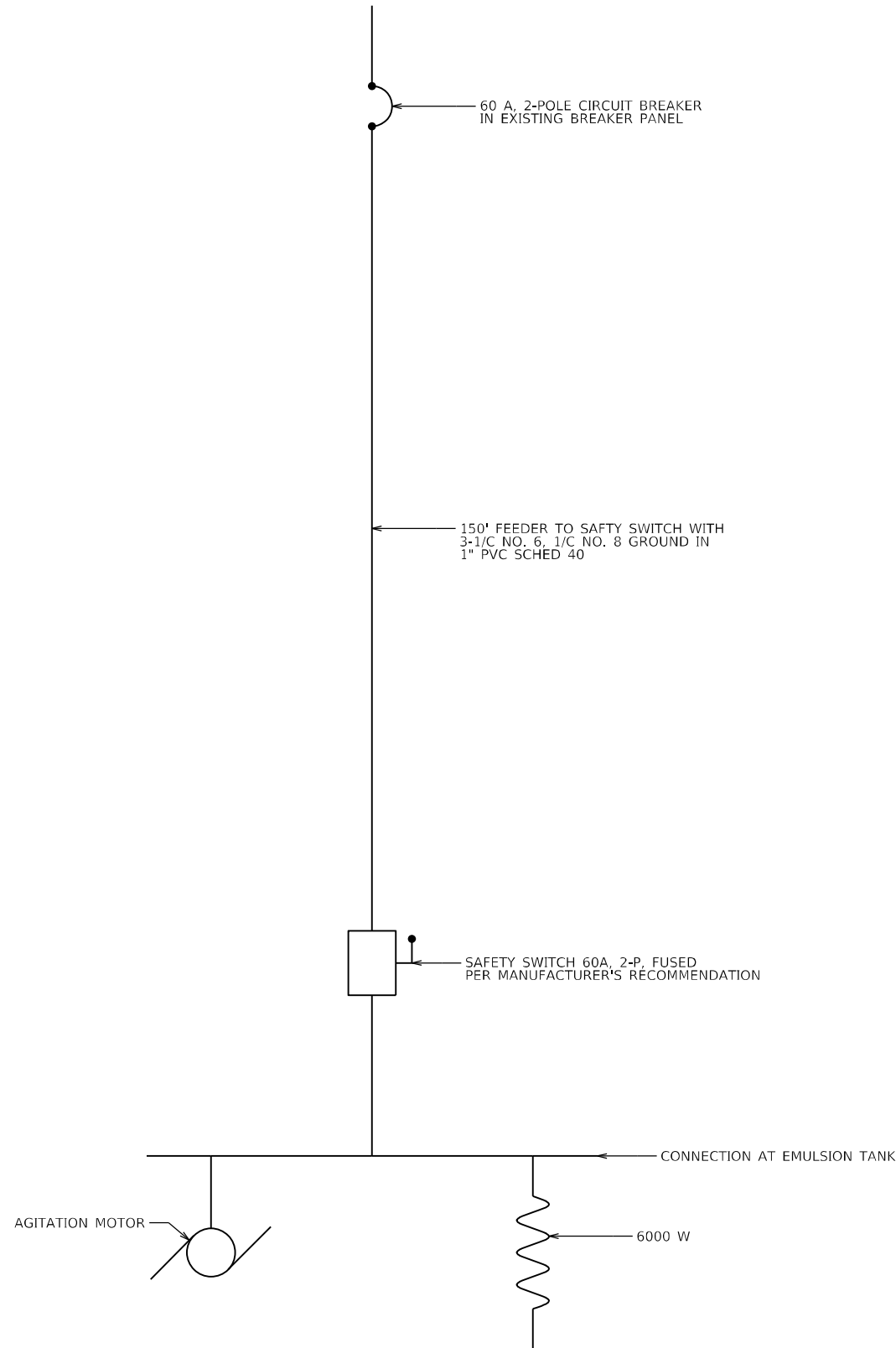
USER NAME = jessica.wille	DESIGNED -	REVISED -
PLOT SCALE = 100,0000' / in.	DRAWN -	REVISED -
PLOT DATE = 7/5/2023	CHECKED -	REVISED -
	DATE -	REVISED -

**STATE OF ILLINOIS
DEPARTMENT OF TRANSPORTATION**

DETAIL SHEET

SCALE: SHEET OF SHEETS STA. TO STA.

F.A. RTE.	SECTION	COUNTY	TOTAL SHEETS	SHEET NO.
VAR	D7 EMULSION TANK 2024	RICHLAND	6	5
			CONTRACT NO. 74C38	
ILLINOIS FED. AID PROJECT				



MODEL: Default
FILE: Mainfile.pwd\ultra-cw-beadray.com\PIV\DOT\Documents\DOT Office\Dir\dir_7\Project\74C38\CADD\DATA\CAD\Sheet\74C38-eh-draw.dgn

USER NAME = jessica.hille	DESIGNED -	REVISED -
	DRAWN -	REVISED -
PLOT SCALE = 100,0000' / in.	CHECKED -	REVISED -
PLOT DATE = 7/5/2023	DATE -	REVISED -

**STATE OF ILLINOIS
DEPARTMENT OF TRANSPORTATION**

SCHEMATIC SHEET

SCALE: SHEET OF SHEETS STA. TO STA.

F.A. RTE.	SECTION	COUNTY	TOTAL SHEETS	SHEET NO.
VAR	D7 EMULSION TANK 2024	RICHLAND	6	6
CONTRACT NO. 74C38			ILLINOIS FED. AID PROJECT	