

091-7041

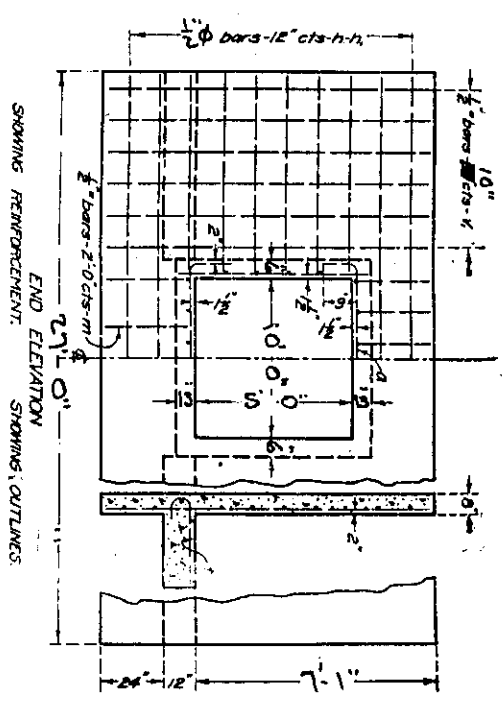
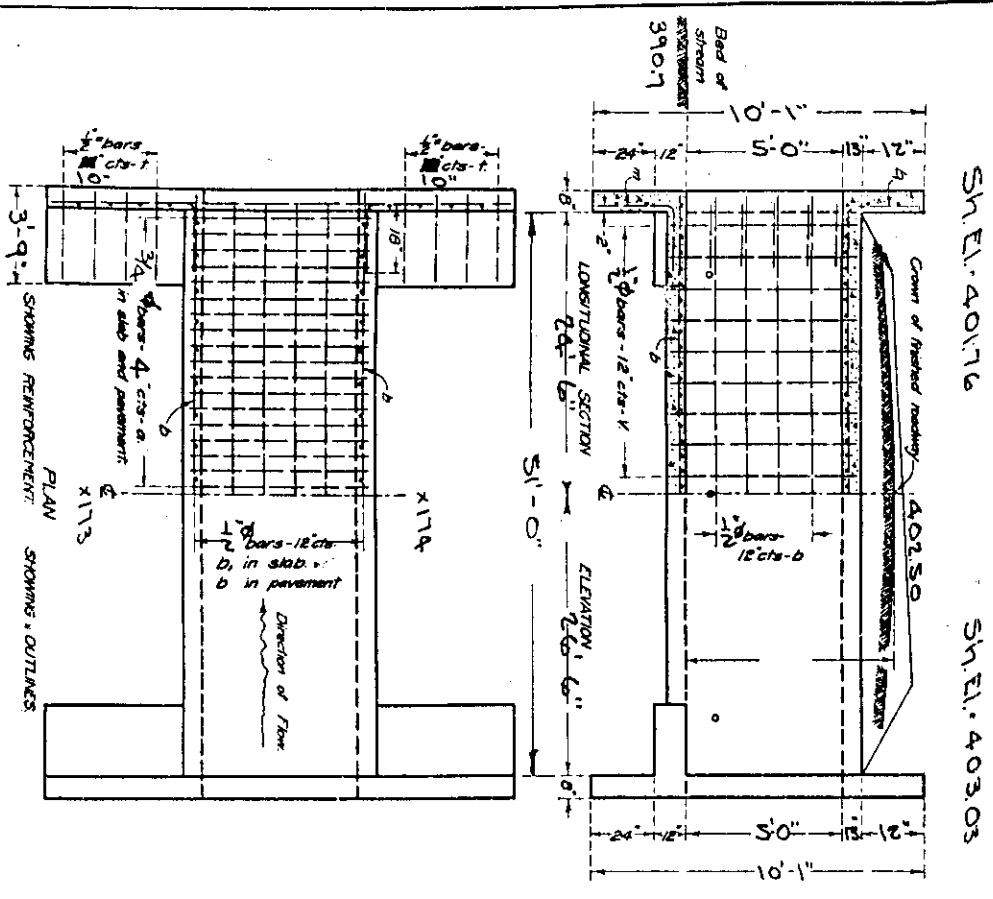
CURVE LT.  
R. 2292.01

STATE OF ILLINOIS  
STATE HIGHWAY DEPARTMENT  
REINFORCED CONCRETE BOX CULVERT

ROAD DISTRICT NO.	SEC.	COUNTY	TOTAL SHEETS	SHEET NO.
146	104-A	Union	76	66
FED. ROAD DIST. NO. 7 ILLINOIS   FED. AID PROJECT 161				

SH. EL. 401.76

SH. EL. 403.03



Note: Use 1/2" bars in downstream headwall only.  
Bar is designed for no fill.  
Minimum clearance = 7'-6"

BILL OF MATERIAL

Bar No.	Size	Length
1	1/2"	71.0'
2	1/2"	91.8'
3	3/4"	26.6'
4	3/4"	27.0'
5	3/4"	28.6'
6	3/4"	4.3'
7	3/4"	5.0'
Steel-Lbs 80,600		
Concrete-Cu Yds 69.1		

Class X concrete to be used throughout.

STATE OF ILLINOIS  
DEPARTMENT OF PUBLIC WORKS & BUILDINGS  
DIVISION OF HIGHWAYS

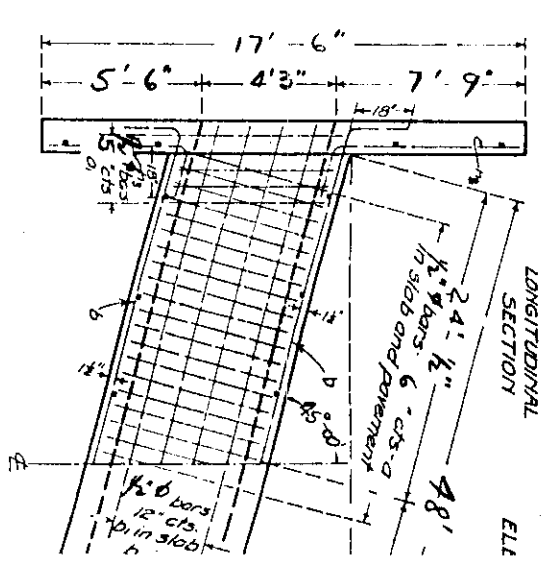
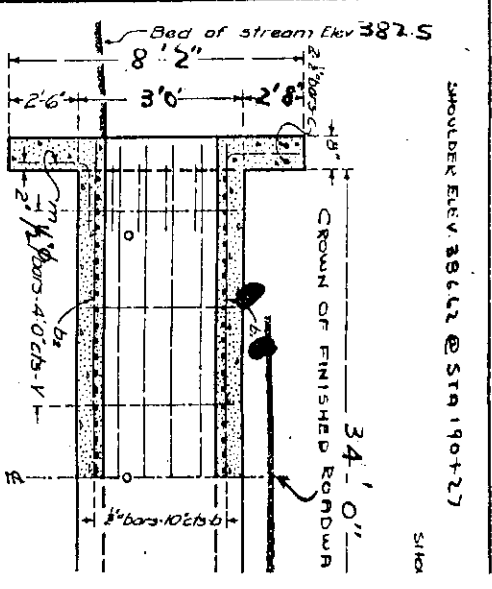
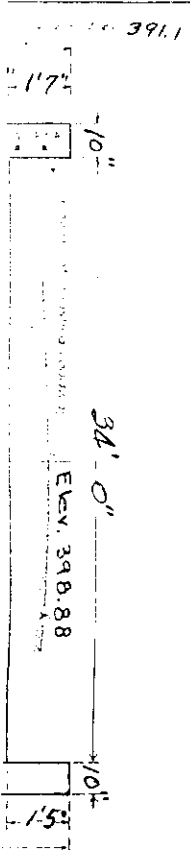
DESIGNED BY	Checked
DRAWN BY	Checked
APPROVED BY	Checked
DATE	

*H. J. Ravel*  
Fossil & Williams  
ENR of Design

SR Route 146 Sec 104-A  
Union County  
Sta 173+95

619

ROAD DISTRICT NO.	SEC.	COUNTY	TOTAL SHEETS	SHEET NO.
146	104-A	Union	76	66
FED. ROAD DIST. NO. 7 ILLINOIS   FED. AID PROJECT 161				



SHOULDER ELEV. 386.22 @ STA 190+27

COMPUTED BY	Checked
STANDARD	Checked
DRAWN BY	Checked
APPROVED BY	Checked
DATE	

*H. J. Ravel*  
Fossil & Williams  
ENR of Design

CURVE LT.  
R. 2292.01

SH. EL. 400.26

