

STATE OF ILLINOIS
DEPARTMENT OF TRANSPORTATION

F.A. RTE.	SECTION	COUNTY	TOTAL SHEETS	SHEET NO.
VAR.	D4 ITS SYSTEM 2023-1	VARIOUS	22	1
		ILLINOIS	CONTRACT NO. 68H18	

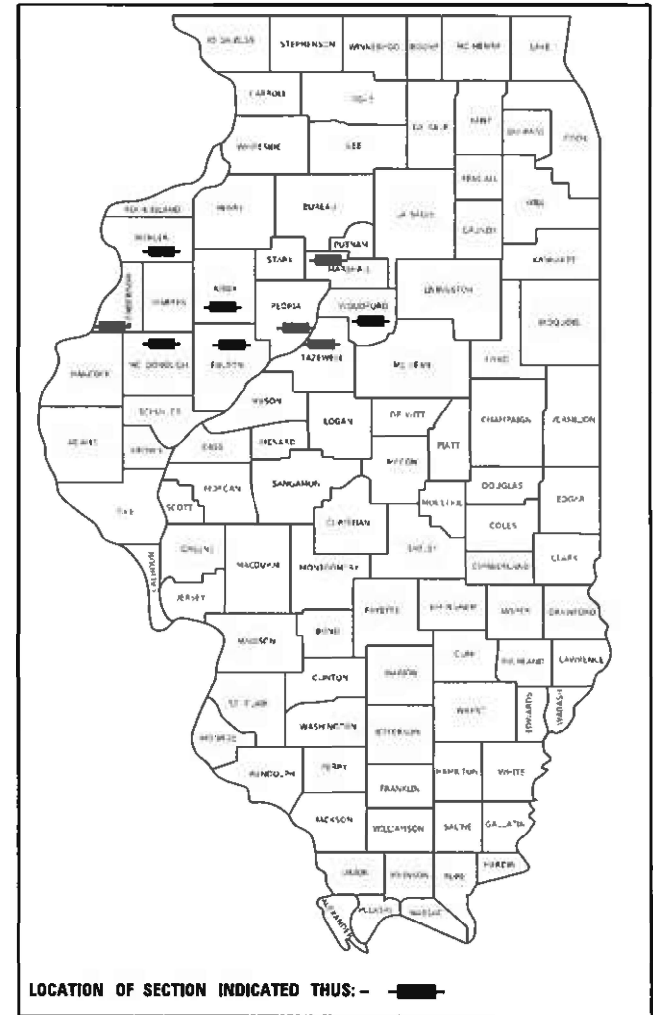
D-94-039-22

INDEX OF SHEETS:
SEE SHEET 2 FOR INDEX OF SHEETS

PROPOSED
HIGHWAY PLANS

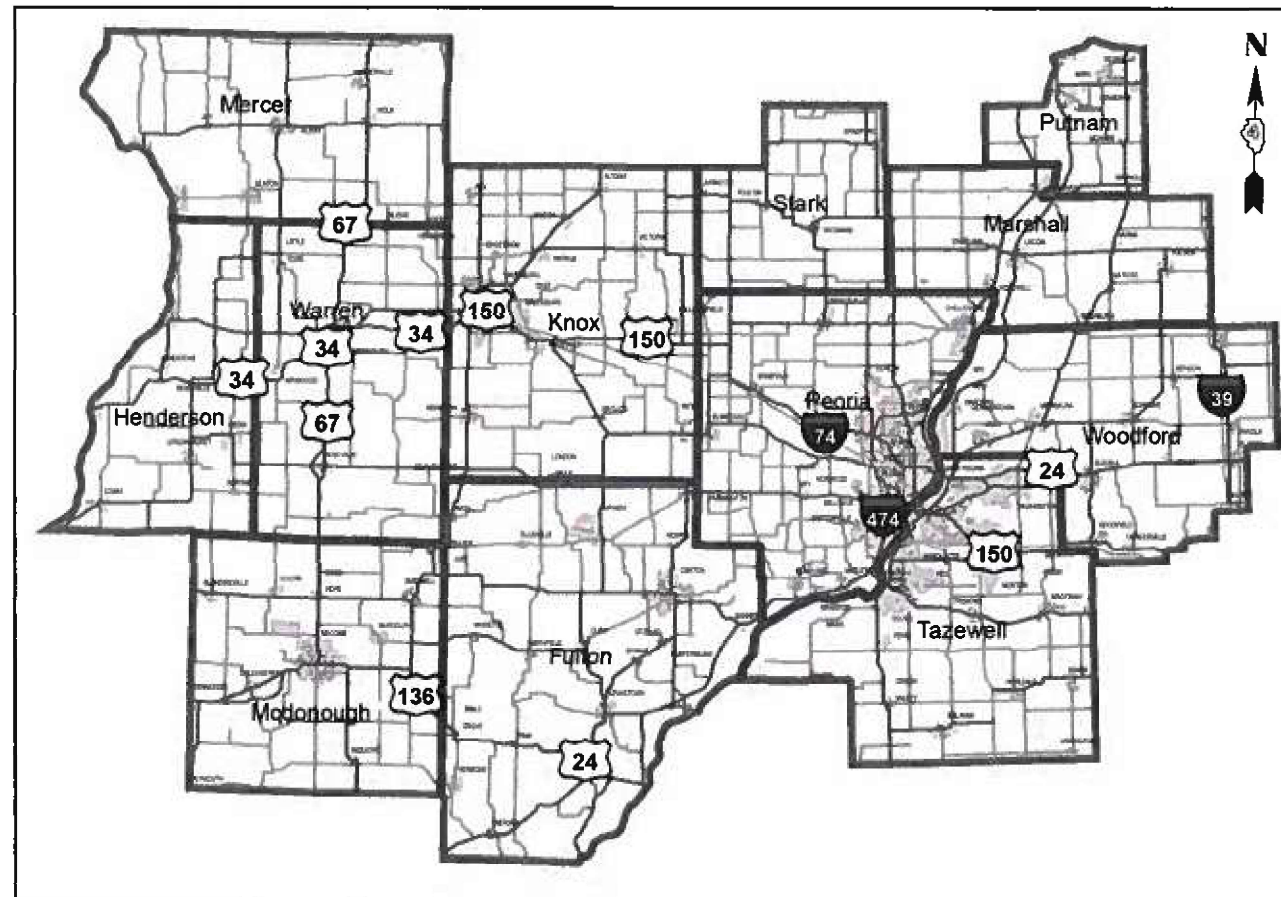
VARIOUS ROUTES
D4 ITS SYSTEM 2023-1
VARIOUS COUNTIES

C-94-057-22



HIGHWAY STANDARDS:
SEE SHEET 2 FOR A LIST OF
APPLICABLE HIGHWAY STANDARDS

PROJECT DESCRIPTION:
INSTALLATION OF BATTERY BACKUP
SYSTEMS, CCTV CAMERAS, ITS
COMPONENTS, AND WIRELESS RADIO
COMMUNICATIONS EQUIPMENT AT
VARIOUS LOCATIONS WITHIN
DISTRICT 4.



J.U.L.I.E.
JOINT UTILITY LOCATION INFORMATION FOR EXCAVATORS
1-800-892-0123
OR 811

PROJECT ENGINEER : TREVOR HANSON (309) 671-4474
PROJECT MANAGER : ERIC HOWALD (309) 671-4481
CATALOG NO. 036334-00D
CONTRACT NO. 68H18

STATE OF ILLINOIS
DEPARTMENT OF TRANSPORTATION

SUBMITTED July 08 20 22
Kenneth A. Garnett REGIONAL ENGINEER

August 19, 2022 [Signature]
ENGINEER OF DESIGN AND ENVIRONMENT

August 19, 2022 [Signature]
DIRECTOR OF HIGHWAYS PROJECT IMPLEMENTATION

PRINTED BY THE AUTHORITY
OF THE STATE OF ILLINOIS

NO COMMITMENTS HAVE BEEN MADE IN CONJUNCTION WITH THIS PROJECT.

INDEX OF SHEETS	
SHEET	DESCRIPTION
1	COVER SHEET
2	COMMITMENTS, INDEX OF SHEETS, AND HIGHWAY STANDARDS
3	CONSTRUCTION NOTES
4	SUMMARY OF QUANTITIES
5 - 6	SCHEDULE OF QUANTITIES
7	PROPOSED ITS PLANS - IL 29 (NE ADAMS) & LORENTZ - PEORIA
8	PROPOSED ITS PLANS - US 24/ IL 29 (MAIN ST.) HILL - CREVE COEUR
9	PROPOSED RADIO ACTIVATED SOLAR ADVANCE FLASHING BEACON SYSTEM PLANS
10 - 16	PROPOSED ITS PLANS
17	PROPOSED CAMERA POLE DETAIL
18	PROPOSED RADIO ACTIVATED SOLAR ADVANCE FLASHING BEACON SYSTEM DETAIL - LOCATION A
19	PROPOSED RADIO ACTIVATED SOLAR ADVANCE FLASHING BEACON SYSTEM DETAIL - LOCATION B
20	BATTERY BACKUP SYSTEM CABINET DETAIL
21	BATTERY BACKUP SYSTEM CABINET WIRING DIAGRAM
22	BATTERY BACKUP SYSTEM BLOCK AND BYPASS SWITCH DIAGRAMS

HIGHWAY STANDARDS	
STANDARD	DESCRIPTION
000001-08	STANDARD SYMBOLS, ABBREVIATIONS AND PATTERNS
001006	DECIMAL OF AN INCH AND OF A FOOT
701001-02	OFF-ROAD OPERATIONS, 2L, 2W, MORE THAN 15' AWAY
701006-05	OFF-ROAD OPERATIONS, 2L, 2W, 15' TO 24" FROM PAVEMENT EDGE
701101-05	OFF-ROAD OPERATIONS, MULTILANE, 15' TO 24" FROM PAVEMENT EDGE
701106-02	OFF-ROAD OPERATIONS, MULTILANE, MORE THAN 15' AWAY
701601-09	URBAN LANE CLOSURE, MULTILANE, 1W OR 2W WITH NONTRAVERSABLE MEDIAN
701606-10	URBAN SINGLE LANE CLOSURE, MULTILANE, 2W WITH MOUNTABLE MEDIAN
701701-10	URBAN LANE CLOSURE, MULTILANE INTERSECTION
701801-06	SIDEWALK, CORNER OR CROSSWALK CLOSURE
701901-08	TRAFFIC CONTROL DEVICES
836001-04	LIGHT POLE FOUNDATION

MODEL: D:\p4\h...
FILE NAME: S:\CEN\W\W\ORD\DESIGN\AN\hanson.dwg 68H18 D4 ITS System 2023-1068H18 D4 ITS System 2023-1.dgn

	USER NAME = hansonj	DESIGNED -	REVISED -	STATE OF ILLINOIS DEPARTMENT OF TRANSPORTATION	COMMITMENTS, INDEX OF SHEETS, & HIGHWAY STANDARDS	F.A. RTE.	SECTION	COUNTY	TOTAL SHEETS	SHEET NO.	
	PLOT SCALE = 23,8272 * / in.	CHECKED -	REVISED -			VAR.	D4 ITS SYSTEM 2023-1	VARIOUS	22	2	
	PLOT DATE = 7/8/2022	DATE -	REVISED -			CONTRACT NO. 68H18					
						ILLINOIS FED. AID PROJECT					
					SCALE:	SHEET	OF	SHEETS	STA.	TO STA.	

TRAFFIC SIGNAL CONSTRUCTION STAGING NOTES

1.	THE CONTRACTOR WILL BE ALLOWED TO PLACE THE INTERSECTION INTO ALL-RED FLASH MODE TO FACILITATE THE INSTALLATION OF THE PROPOSED TRAFFIC BATTERY BACKUP SYSTEM AND OTHER COMPONENTS.
2.	THE CONTRACTOR SHALL FURNISH AND INSTALL A MINIMUM OF TWO STOP SIGNS PER APPROACH WHEN THE INTERSECTION IS OPERATING IN AL-RED FLASH MODE. THE TRAFFIC SIGNALS MAY BE PLACED INTO ALL-RED FLASH MODE BETWEEN THE HOURS OF 8:30AM AND 3:00PM ONLY.
3.	THE CONTRACTOR SHALL RESTORE THE TRAFFIC SIGNALS TO NORMAL OPERATION AT ALL OTHER TIMES, UNLESS SPECIFICALLY DIRECTED OTHERWISE BY THE ENGINEER.
4.	THE CONTRACTOR WILL BE ALLOWED TO PLACE THE INTERSECTION INTO FLASH FOR A MAXIMUM OF FIVE DAYS PER EACH LOCATION.
5.	THE CONTRACTOR WILL BE ALLOWED TO MAKE TEMPORARY SPLICES AS NEEDED TO FACILITATE THE INSTALLATION OF THE PROPOSED TRAFFIC SIGNAL EQUIPMENT.
6.	ALL COSTS (LABOR, MATERIALS, AND EQUIPMENT) ASSOCIATED WITH THESE REQUIREMENTS SHALL BE INCLUDED IN THE CONTRACT BID PRICE. THERE WILL BE NO ADDITIONAL COMPENSATION FOR ITEMS REQUIRED TO IMPLEMENT STAGING, INCLUDING, BUT NOT LIMITED TO, TEMPORARY CABLE SPLICES, TEMPORARY TRAFFIC POSTS, AND PREMIUM TIME HOURS.

CONSTRUCTION NOTES

1.	THE LOCATION OF ALL UTILITIES AND PRIVATELY OWNED FACILITIES SHALL BE FIELD VERIFIED BY THE CONTRACTOR PRIOR TO THE INSTALLATION OF ANY COMPONENTS.
2.	THE CONTRACTOR SHALL BE RESPONSIBLE FOR LOCATING EXISTING IDOT ELECTRICAL FACILITIES AT HIS/HER OWN EXPENSE IF REQUIRED. THE CONTRACTOR SHALL ALSO BE LIABLE FOR ANY DAMAGE TO IDOT FACILITIES RESULTING FROM INACCURATE LOCATING.
3.	ELECTRICAL WORK SHALL CONFORM WITH NATIONAL, STATE, AND LOCAL CODES.
4.	THE CONTRACTOR SHALL PROVIDE ELECTRICAL CABLE SLACK IN ACCORDANCE WITH ARTICLE 873.03.
5.	ELECTRICAL CABLE WILL BE MEASURED FOR PAYMENT IN ACCORDANCE WITH ARTICLE 873.04.
6.	THE CONTRACTOR SHALL VERIFY FIELD CONDITIONS PRIOR TO BIDDING. THERE WILL BE NO ADDITIONAL COMPENSATION PAID FOR CLAIMS THAT ARISE FROM A FAILURE TO FULLY INVESTIGATE EXISTING FIELD CONDITIONS.
7.	ANY MAINTENANCE OF EXISTING TRAFFIC SIGNALS WILL BE CONSIDERED EXTRA WORK IN ACCORDANCE WITH ARTICLE 109.04 OF THE STANDARD SPECIFICATIONS.
8.	ALL SURPLUS MATERIALS SHALL BE DISPOSED OF IN ACCORDANCE WITH ARTICLE 202.03 OF THE STANDARD SPECIFICATIONS.
9.	NO ADDITIONAL COMPENSATION WILL BE ALLOWED FOR PLACING CONDUIT AT GREATER THAN 2 FT. MINIMUM DEPTH TO AVOID OBSTACLES SUCH AS
10.	THE CONTRACTOR IS RESPONSIBLE FOR THE COST OF UNCOVERING OR HAND DIGGING AROUND UTILITIES AS NECESSARY. THIS COST OF THIS WORK SHALL BE INCLUDED IN THE UNIT PRICES FOR THE CONDUITS.
11.	THE EXISTING TRAFFIC SIGNALS SHALL REMAIN IN OPERATION DURING THE CONSTRUCTION OF THE PROPOSED TRAFFIC SIGNALS.
12.	ALL CCTV CAMERAS SHALL BE INSTALLED AT A MINIMUM MOUNTING HEIGHT OF 43 FT FOR ALL STRAIN POLE AND LIGHT POLE INSTALLATIONS AND 34 FT FOR ALL PROPOSED CAMERA POLE, 20 FT. INSTALLATIONS.
13.	REMOVAL OF EXISTING TRAFFIC SIGNAL AND ITS ITEMS WILL NOT BE PAID FOR SEPARATELY, BUT SHALL BE INCLUDED IN THE BID PRICES FOR THE PROPOSED ITEMS.
14.	THE CONTRACTOR SHALL COORDINATE THE INSTALLATION OF THE PROPOSED BATTERY BACKUP SYSTEMS WITH THE CONTRACTOR FOR CONTRACT 68H17 AT LOCATIONS WHERE THE EXISTING CONTROLLER CABINETS ARE BEING REPLACED UNDER THAT CONTRACT.
15.	THE CONTRACTOR SHALL REMOVE THE EXISTING CCTV CAMERAS AND BRACKETS AND DELIVER THEM TO THE IDOT TRAFFIC BUILDING LOCATED AT 1025 W. DETWEILLER DR., PEORIA IL. THE CONTRACTOR SHALL NOTIFY GREG DIXON AT (309) 258-7481 A MINIMUM OF 48 HOURS PRIOR TO DELIVERY. THE COST OF THIS WORK SHALL BE INCLUDED IN THE COST OF THE PROPOSED CCTV CAMERA.
16.	THE CONTRACTOR SHALL REMOVE THE EXISTING BATTERY BACKUP SYSTEMS AND DISPOSE OF THEM OFF SITE. ALL BATTERIES SHALL BE RECYCLED AT AN AUTHORIZED RECYCLING CENTER. THE CONTRACTOR SHALL PERMIT IDOT AND THE CITY OF PEORIA TO SALVAGE ANY OF THE REMOVAL ITEMS PRIOR TO DISPOSAL AND DELIVER THEM TO THE IDOT TRAFFIC BUILDING LOCATED AT 1025 W. DETWEILLER DR., PEORIA IL. THE CONTRACTOR SHALL NOTIFY TONY BRIDSON AT (309) 370-7522 A MINIMUM OF 48 HOURS PRIOR TO DELIVERY.
17.	THE CONTRACTOR SHALL FIELD VERIFY THAT A CLEAR LINE OF SIGHT EXISTS BETWEEN THE TWO ETHERNET RADIOS PRIOR TO EQUIPMENT INSTALLATION. IN THE EVENT THAT TWO RADIOS DO NOT HAVE THE REQUIRED LINE OF LIGHT, THE CONTRACTOR SHALL NOTIFY THE RESIDENT ENGINEER FOR APPROVAL TO RELOCATE ONE OR MORE RADIOS TO A NEW LOCATION THAT HAS LINE OF SIGHT. THERE WILL BE NO ADDITIONAL PAYMENT IF ONE OR MORE RADIOS NEEDS TO BE RELOCATED TO A LOCATION OTHER THAN THE ONE SHOWN IN THE PLANS.

MODEL PATH: S:\CEN\W\ORD\ESP\AN\barson\68H18 D4 ITS System 2023-1.dgn
FILE NAME: S:\CEN\W\ORD\ESP\AN\barson\68H18 D4 ITS System 2023-1.dgn

USER NAME = hansonj	DESIGNED -	REVISED -
	DRAWN -	REVISED -
PLOT SCALE = 23,8272 * / in.	CHECKED -	REVISED -
PLOT DATE = 7/8/2022	DATE -	REVISED -

**STATE OF ILLINOIS
DEPARTMENT OF TRANSPORTATION**

CONSTRUCTION NOTES

SCALE: SHEET OF SHEETS STA. TO STA.

F.A. RTE.	SECTION	COUNTY	TOTAL SHEETS	SHEET NO.
VAR.	D4 ITS SYSTEM 2023-1	VARIOUS	22	3
			CONTRACT NO. 68H18	
		ILLINOIS FED. AID PROJECT		

MODEL Path: \\S:\CEN\W\W000\DESIGN\AN\barson\# 68H18 D4 ITS System 2023-1.dgn
 FILE NAME: S:\CEN\W\W000\DESIGN\AN\barson\# 68H18 D4 ITS System 2023-1.dgn

SUMMARY OF QUANTITIES				FULTON COUNTY	HENDERSON COUNTY	KNOX COUNTY				MARSHALL COUNTY	MCDONOUGH COUNTY				MERCER COUNTY	PEORIA COUNTY						TAZEVELL COUNTY					WOODFORD COUNTY
				CONST. TYPE CODE 0021 100% STATE 0% COUNTY ITS/ SIGNALS RURAL	CONST. TYPE CODE 0021 100% STATE 0% COUNTY ITS/ SIGNALS RURAL	CONST. TYPE CODE 0021 100% STATE 0% ABINGDON ITS/ SIGNALS URBAN	CONST. TYPE CODE 0021 100% STATE 0% GALESBURG ITS/ SIGNALS URBAN	CONST. TYPE CODE 0021 90% STATE 10% GALESBURG ITS/ SIGNALS URBAN	CONST. TYPE CODE 0021 80% STATE 20% GALESBURG ITS/ SIGNALS URBAN	CONST. TYPE CODE 0021 100% STATE 0% LACON ITS/ SIGNALS URBAN	CONST. TYPE CODE 0021 100% STATE 0% GOOD HOPE ITS/ SIGNALS URBAN	CONST. TYPE CODE 0021 100% STATE 0% MACOMB ITS/ SIGNALS URBAN	CONST. TYPE CODE 0021 100% STATE 0% COUNTY ITS/ SIGNALS RURAL	CONST. TYPE CODE 0021 100% STATE 0% ALEDO ITS/ SIGNALS URBAN	CONST. TYPE CODE 0021 100% STATE 0% BARTONVILLE ITS/ SIGNALS URBAN	CONST. TYPE CODE 0021 100% STATE 0% PEORIA ITS/ SIGNALS URBAN	CONST. TYPE CODE 0021 93.3% STATE ITS/ SIGNALS URBAN	CONST. TYPE CODE 0021 90% STATE ITS/ SIGNALS URBAN	CONST. TYPE CODE 0021 80% STATE ITS/ SIGNALS URBAN	CONST. TYPE CODE 0021 100% STATE ITS/ SIGNALS URBAN	CONST. TYPE CODE 0021 100% STATE 0% CREVE COEUR ITS/ SIGNALS URBAN	CONST. TYPE CODE 0021 100% STATE 0% EAST PEORIA ITS/ SIGNALS URBAN	CONST. TYPE CODE 0021 90% STATE 10% EAST PEORIA ITS/ SIGNALS URBAN	CONST. TYPE CODE 0021 80% STATE 20% EAST PEORIA ITS/ SIGNALS URBAN	CONST. TYPE CODE 0021 100% STATE 0% MARQUETTE HEIGHTS ITS/ SIGNALS URBAN	CONST. TYPE CODE 0021 100% STATE 0% EUREKA ITS/ SIGNALS URBAN	
PAY ITEM NO.	ITEM DESCRIPTION	UNIT	TOTAL QTY.	QTY.	QTY.	QTY.	QTY.	QTY.	QTY.	QTY.	QTY.	QTY.	QTY.	QTY.	QTY.	QTY.	QTY.	QTY.	QTY.	QTY.	QTY.	QTY.	QTY.	QTY.	QTY.		
67100100	MOBILIZATION	L SUM	1.0				0.3						0.1						0.2		0.2	0.2					
81028340	UNDERGROUND CONDUIT, PVC, 1 1/2" DIA.	FOOT	74.0															30.0			44.0						
83600356	LIGHT POLE FOUNDATION, METAL, 15" BOLT CIRCLE, 8 5/8" X 6'	EACH	2.0																1.0			1.0					
83800650	BREAKAWAY DEVICE, COUPLING WITH STAINLESS STEEL SCREEN	EACH	8.0												4.0						4.0						
87900200	DRILL EXISTING HANDHOLE	EACH	1.0																1.0								
X0320023	CLOSED CIRCUIT TELEVISION DOME CAMERA, HD	EACH	29.0	1.0		1.0	5.0			1.0	2.0	2.0	2.0	1.0	4.0			1.0	4.0	2.0	1.0				1.0		
X0322281	WIDE AREA VIDEO DETECTION SYSTEM COMPLETE	EACH	3.0													1.0	2.0										
X0322915	METAL LIGHT POLE, INSTALL ONLY	EACH	2.0															1.0			1.0						
X0323914	FIBER OPTIC CABLE SPLICE - LATERAL	EACH	1.0																		1.0						
X0325810	WIRELESS ETHERNET RADIO	EACH	12.0				5.0		1.0	2.0			2.0			2.0											
X0326812	CAT 5 ETHERNET CABLE	FOOT	4190.5	67.0		136.5	1044.0						150.5	227.0	295.0	200.5	700.5	86.5	293.5	137.5	323.0	35.0	120.5		75.0		
X0326856	RADIO ACTIVATED SOLAR ADVANCE FLASHING BEACON SYSTEM (COMPLETE)	EACH	2.0																			2.0					
X0327735	CAMERA POLE, 20 FT	EACH	6.0				2.0		1.0					1.0	1.0						1.0						
X1400127	CAT. 6 ETHERNET CABLE	FOOT	1772.5				766.5		298.5	238.5			219.5				249.5										
X7010216	TRAFFIC CONTROL AND PROTECTION, (SPECIAL)	L SUM	1.0				0.3						0.1						0.2		0.2	0.2					
Z0033052	COMMUNICATIONS VAULT	EACH	1.0																		1.0						
Z0033068	TRAFFIC SIGNAL BATTERY BACKUP SYSTEM	EACH	31.0		1.0			6.0		2.0	1.0	2.0						1.0	5.0	4.0	1.0	1.0	4.0	1.0	1.0		

USER NAME = hansonj	DESIGNED -	REVISED -
	DRAWN -	REVISED -
PLOT SCALE = 23,8272 */ in.	CHECKED -	REVISED -
PLOT DATE = 7/8/2022	DATE -	REVISED -

STATE OF ILLINOIS
DEPARTMENT OF TRANSPORTATION

SUMMARY OF QUANTITIES			
SCALE:	SHEET	OF	SHEETS
	STA.	TO	STA.

F.A. RTE.	SECTION	COUNTY	TOTAL SHEETS	SHEET NO.
VAR.	D4 ITS SYSTEM 2023-1	VARIOUS	22	4
			CONTRACT NO. 68H18	
		ILLINOIS	FED. AID PROJECT	

UNDERGROUND CONDUIT, PVC, 1 1/2" DIA.				
COUNTY	CITY	LOCATION	FUND CODE STATE / LOCAL AGENCY	QTY. (FOOT)
PEORIA COUNTY	PEORIA	IL 29 (Adams) & Lorentz	100/0	30.0
COUNTY TOTAL				30.0
TAZEWELL COUNTY	CREVE COEUR	US 24/ IL 29 (Main St.) Hill	100/0	44.0
COUNTY TOTAL				44.0

LIGHT POLE FOUNDATION, METAL, 15" BOLT CIRCLE, 8 5/8" X 6'				
COUNTY	CITY	LOCATION	FUND CODE STATE / LOCAL AGENCY	QTY. (EACH)
PEORIA COUNTY	PEORIA	IL 29 (Adams) & Lorentz	100/0	1.0
COUNTY TOTAL				1.0
TAZEWELL COUNTY	CREVE COEUR	US 24/ IL 29 (Main St.) Hill	100/0	1.0
COUNTY TOTAL				1.0

DRILL EXISTING HANDHOLE				
COUNTY	CITY	LOCATION	FUND CODE STATE / LOCAL AGENCY	QTY. (EACH)
PEORIA COUNTY	PEORIA	IL 29 (Adams) & Lorentz	100/0	1.0
COUNTY TOTAL				1.0

CLOSED CIRCUIT TELEVISION DOME CAMERA, HD					
COUNTY	CITY	LOCATION	FUND CODE STATE / LOCAL AGENCY	QTY. (EACH)	NOTES
FULTON COUNTY	FULTON COUNTY	IL 97 & IL 116	100/0	1.0	INSTALL ON EX. LIGHT POLE IN SE QUADRANT
COUNTY TOTAL				1.0	
KNOX COUNTY	GALESBURG	ABINGDON	100/0	1.0	INSTALL ON EX. MAST ARM STRAIN POLE IN SW QUADRANT
		IL 41 (Main) & Linwood	100/0	1.0	INSTALL ON PROP. CAMERA POLE, 20 FT. ON EX. MAST ARM IN NW QUADRANT
		US 150 (Henderson) & Home	100/0	1.0	INSTALL ON EX. MAST ARM STRAIN POLE IN NE QUADRANT
		US 150 (Main) & Seminary	100/0	1.0	INSTALL ON EX. MAST ARM STRAIN POLE IN NW QUADRANT
		US 150 (Main) & Grand	100/0	1.0	INSTALL ON PROP. CAMERA POLE, 20 FT. ON EX. MAST ARM IN SE QUADRANT
		IL 41 (Linwood) & Monmouth	100/0	1.0	INSTALL ON PROP. CAMERA POLE, 20 FT. ON EX. MAST ARM IN SW QUADRANT
COUNTY TOTAL				7.0	
MCDONOUGH COUNTY	GOOD HOPE	US 67 (Monmouth) & Main	100/0	1.0	INSTALL PROP. CAMERA AND MOUNTING BRACKET, RE-USE EX. CAT 5 ETHERNET CABLE
	MACOMB	US 67 (Lafayette) & Pierce	100/0	1.0	INSTALL ON EX. MAST ARM STRAIN POLE IN NE QUADRANT
		US 67 (Lafayette) & University	100/0	1.0	INSTALL PROP. CAMERA AND MOUNTING BRACKET, RE-USE EX. CAT 5 ETHERNET CABLE
	MCDONOUGH COUNTY	US 136 & IL 110 Interchange	100/0	1.0	INSTALL ON EX. LIGHT POLE CLOSEST TO EX. LIGHTING CONTROLLER
US 67 & IL 336 Interchange		100/0	1.0	INSTALL ON EX. LIGHT POLE CLOSEST TO EX. LIGHTING CONTROLLER	
COUNTY TOTAL				5.0	
MERCER COUNTY	ALEDO	IL 94 (College) & IL 17 (Third)	100/0	1.0	INSTALL ON EX. MAST ARM STRAIN POLE IN SE QUADRANT
		IL 17 (Third) & IL 94/ Walmart Entrance	100/0	1.0	INSTALL ON PROP. CAMERA POLE, 20 FT. ON EX. MAST ARM IN SE QUADRANT
COUNTY TOTAL				2.0	
PEORIA COUNTY	BARTONVILLE	US 24 (Mckinley) & McClure	100/0	1.0	INSTALL ON PROP. CAMERA POLE, 20 FT. ON EX. MAST ARM IN NE QUADRANT
		IL 8 (Western) & Moss	100/0	1.0	INSTALL ON EX. MAST ARM STRAIN POLE IN SW QUADRANT
	PEORIA	IL 29 (Adams) & Lorentz	100/0	1.0	INSTALL ON PROP. CAMERA POLE, 45 FT. IN NW QUADRANT
		IL 29 (Galena) & Gardner	100/0	1.0	INSTALL ON EX. MAST ARM STRAIN POLE IN NE QUADRANT
		IL 40 (Knoxville) & Hickory Grove	100/0	1.0	INSTALL ON EX. MAST ARM STRAIN POLE IN SW QUADRANT
	PEORIA COUNTY	Forrest Hill & Gale	100/0	1.0	INSTALL PROP. CAMERA AND MOUNTING BRACKET, RE-USE EX. CAT 5 ETHERNET CABLE
		IL 40 (Knoxville) & Woodside	100/0	1.0	INSTALL ON EX. MAST ARM STRAIN POLE IN SW QUADRANT
		IL 116 (Harmon) & Airport	100/0	1.0	INSTALL ON EX. MAST ARM STRAIN POLE IN SE QUADRANT
		IL 116 (Plank) & Maxwell	100/0	1.0	INSTALL ON PROP. CAMERA POLE, 20 FT. ON EX. MAST ARM IN SW QUADRANT
	COUNTY TOTAL				10.0
TAZEWELL COUNTY	CREVE COEUR	US 24/ IL 29 (Main St.) Hill	100/0	1.0	INSTALL ON PROP. CAMERA POLE, 45 FT. AS SHOWN IN THE PLANS
		Wesley Road under I-474*	100/0	1.0	REPLACE EX. CCTV CAMERA
	EAST PEORIA	IL 8 (Washington) & US 150	100/0	1.0	INSTALL ON EX. MAST ARM STRAIN POLE IN SE QUADRANT
COUNTY TOTAL				3.0	
WOODFORD COUNTY	EUREKA	IL 117 (Main) & Lake	100/0	1.0	INSTALL ON EX. MAST ARM STRAIN POLE IN SE QUADRANT
		COUNTY TOTAL			

WIDE AREA VIDEO DETECTION SYSTEM COMPLETE					
COUNTY	CITY	LOCATION	FUND CODE STATE / LOCAL AGENCY	QTY. (EACH)	NOTES
PEORIA COUNTY	PEORIA	IL 29 (Adams) & Lorentz	100/0	1.0	INSTALL ON PROP. CAMERA POLE, 45 FT. IN NW QUADRANT
		IL 40 (Knoxville) & Detweiler	90/10	1.0	INSTALL ON EX. MAST ARM STRAIN POLE IN SW QUADRANT
		IL 40 (Knoxville) & Pioneer Parkway	93.3/6.7	1.0	INSTALL ON EX. MAST ARM STRAIN POLE IN SW QUADRANT
COUNTY TOTAL				3.0	

FIBER OPTIC CABLE SPLICE - LATERAL				
COUNTY	CITY	LOCATION	FUND CODE STATE / LOCAL AGENCY	QTY. (EACH)
TAZEWELL COUNTY	CREVE COEUR	US 24/ IL 29 (Main St.) Hill	100/0	1.0
COUNTY TOTAL				1.0

WIRELESS ETHERNET RADIO					
COUNTY	CITY	LOCATION	FUND CODE STATE / LOCAL AGENCY	QTY. (EACH)	NOTES*
KNOX COUNTY	GALESBURG	IL 41 (Main) & Linwood	100/0	1.0	INSTALL ON PROP. CAMERA POLE, 20 FT. ON EX. MAST ARM IN NW QUADRANT, AIMED TOWARDS IL 41 (LINWOOD) &
		US 150 (Main) & Grand	100/0	2.0	INSTALL ON PROP. CAMERA POLE, 20 FT. ON EX. MAST ARM IN SE QUADRANT, ONE AIMED TOWARDS US 150 (MAIN) & ALLENS AND ONE AIMED TOWARDS MAIN & FARNHAM
		US 150 (Main) & Allens	100/0	1.0	INSTALL ON EX. LIGHT POLE AS SHOWN IN THE PLANS, AIMED TOWARDS US 150 (MAIN) & GRAND
		IL 41 (Linwood) & Monmouth	100/0	1.0	INSTALL ON PROP. CAMERA POLE, 20 FT. ON EX. MAST ARM IN SW QUADRANT, AIMED TOWARDS IL 41 (MAIN) & LINWOOD
		Main & Farnham	80/20	1.0	INSTALL ON PROP. CAMERA POLE, 20 FT. ON EX. MAST ARM IN SE QUADRANT, AIMED TOWARDS US 150 (MAIN) & GRAND
COUNTY TOTAL				6.0	
MARSHALL COUNTY	LACON	IL 17 (Fifth) & High	100/0	1.0	INSTALL ON EX. MAST ARM IN NW QUADRANT, AIMED TOWARDS IL 17 (FIFTH) & IL 26 (PRAIRIE)
		IL 17 (Fifth) & IL 26 (Prairie)	100/0	1.0	INSTALL ON EX. MAST ARM STRAIN POLE IN SE QUADRANT, AIMED TOWARDS IL 17 (FIFTH) & HIGH
COUNTY TOTAL				2.0	
MCDONOUGH COUNTY	MACOMB	US 67 (Lafayette) & Pierce	100/0	1.0	INSTALL ON EX. MAST ARM STRAIN POLE IN NE QUADRANT, AIMED TOWARDS US 67 (LAFAYETTE) & US 136 (CALHOUN)
		US 67 (Lafayette) & US 136 (Calhoun)	100/0	1.0	INSTALL ON EX. LIGHT POLE AS SHOWN IN THE PLANS, AIMED TOWARDS US 67 (LAFAYETTE) & PIERCE
		COUNTY TOTAL			
PEORIA	PEORIA	IL 8 (Western) & MLK Jr.	100/0	1.0	INSTALL ON EX. MAST ARM IN SE QUADRANT, AIMED TOWARDS IL 8 (WESTERN) & IL 116 (HOWETT)
		IL 8 (Western) & IL 116 (Howett)	100/0	1.0	INSTALL ON EX. LIGHT POLE AS SHOWN IN THE PLANS, AIMED TOWARDS IL 8 (WESTERN) & MLK JR DR
COUNTY TOTAL				2.0	

*The Contractor shall field verify that a clear line of sight exists between the two radios prior to equipment installation. In the event that the two radios do not have the required line of sight, the contractor shall notify the Resident Engineer for approval to relocate one or more radios to a new location that has line of sight.

CAT 5 ETHERNET CABLE				
COUNTY	CITY	LOCATION	FUND CODE STATE / LOCAL AGENCY	QTY. (FOOT)
FULTON COUNTY	FULTON COUNTY	IL 97 & IL 116	100/0	67.0
COUNTY TOTAL				67.0
KNOX COUNTY	GALESBURG	ABINGDON	100/0	136.5
		IL 41 (Main) & Linwood	100/0	174.0
		US 150 (Henderson) & Home	100/0	298.5
		US 150 (Main) & Seminary	100/0	240.5
		US 150 (Main) & Grand	100/0	190.5
		IL 41 (Linwood) & Monmouth	100/0	140.5
		Main & Farnham	80/20	298.5
COUNTY TOTAL				1479.0
MCDONOUGH COUNTY	MCDONOUGH COUNTY	MACOMB	100/0	150.5
		US 136 & IL 110 Interchange	100/0	151.0
		US 67 & IL 336 Interchange	100/0	76.0
COUNTY TOTAL				377.5
MERCER COUNTY	ALEDO	IL 94 (College) & IL 17 (Third)	100/0	119.5
		IL 17 (Third) & IL 94/ Walmart Entrance	100/0	175.5
COUNTY TOTAL				295.0
PEORIA COUNTY	BARTONVILLE	US 24 (Mckinley) & (McClure)	100/0	200.5
		IL 8 (Western) & Moss	100/0	165.5
	PEORIA	IL 29 (Adams) & Lorentz	100/0	461.0
		IL 29 (Galena) & Gardner	100/0	230.5
		IL 40 (Knoxville) & Hickory Grove	100/0	74.0
		IL 40 (Knoxville) & Detweiler	100/0	63.0
		IL 40 (Knoxville) & Pioneer Parkway	100/0	86.5
		Forrest Hill & Gale	100/0	137.5
	PEORIA COUNTY	IL 40 (Knoxville) & Woodside	100/0	102.0
		IL 116 (Harmon) & Airport	100/0	74.0
IL 116 (Plank) & Maxwell		100/0	147.0	
COUNTY TOTAL				1741.5
TAZEWELL COUNTY	CREVE COEUR	US 24/ IL 29 (Main St.) Hill	100/0	35.0
	EAST PEORIA	IL 8 (Washington) & US 150 (Meadows)	100/0	120.5
COUNTY TOTAL				155.5
WOODFORD COUNTY	EUREKA	IL 117 (Main) & Lake	100/0	75.0
COUNTY TOTAL				75.0

MODEL: D:\p\h\... FILE NAME: S:\CEN\W\ORD\ESP\AN\barson# 68H18 04 ITS System 2023-1068H18 04 ITS System 2023-1.dgn

USER NAME = hansonj	DESIGNED -	REVISED -
	DRAWN -	REVISED -
PLOT SCALE = 23,8272 */ in.	CHECKED -	REVISED -
PLOT DATE = 7/8/2022	DATE -	REVISED -

**STATE OF ILLINOIS
DEPARTMENT OF TRANSPORTATION**

SCHEDULE OF QUANTITIES

SCALE: SHEET OF SHEETS STA. TO STA.

F.A. RTE.	SECTION	COUNTY	TOTAL SHEETS	SHEET NO.
VAR.	D4 ITS SYSTEM 2023-1	VARIOUS	22	5
CONTRACT NO. 68H18				
ILLINOIS FED. AID PROJECT				

METAL LIGHT POLE, INSTALL ONLY					
COUNTY	CITY	LOCATION	FUND CODE STATE / LOCAL AGENCY	QTY. (EACH)	NOTES
PEORIA COUNTY	PEORIA	IL 29 (Adams) & Lorentz	100/0	1.0	SEE SHEET 7 FOR DETAILS
				COUNTY TOTAL	1.0
TAZEWELL COUNTY	CREVE COEUR	US 24/ IL 29 (Main St.) Hill	100/0	1.0	SEE SHEET 8 FOR DETAILS
				COUNTY TOTAL	1.0

RADIO ACTIVATED SOLAR ADVANCE FLASHING BEACON SYSTEM (COMPLETE)					
COUNTY	CITY	LOCATION	FUND CODE STATE / LOCAL AGENCY	QTY. (EACH)	NOTES
TAZEWELL COUNTY	EAST PEORIA	IL 116 (Main St) Between Pekin Ave & Johnson St	100/0	1.0	REPLACE EXISTING FLASHING BEACON SYSTEM, SEE PLANS FOR DETAILS
		IL 116 (Main St) @ National St	100/0	1.0	INSTALL ON WB IL 116 APPROXIMATELY 130 FT. WEST OF NATIONAL ST., SEE PLANS FOR DETAILS
					COUNTY TOTAL

CAMERA POLE, 20 FT					
COUNTY	CITY	LOCATION	FUND CODE STATE / LOCAL AGENCY	QTY. (EACH)	NOTES
KNOX COUNTY	GALESBURG	IL 41 (Main) & Linwood	100/0	1.0	INSTALL ON EX. MAST ARM IN NW QUADRANT
		US 150 (Main) & Grand	100/0	1.0	INSTALL ON EX. MAST ARM IN SE QUADRANT
		Main & Farnham	80/20	1.0	INSTALL ON EX. MAST ARM IN SE QUADRANT
MERCER COUNTY	ALEDO	IL 94 (Fifth) & IL 17 (Third/ Walmart	100/0	1.0	INSTALL ON EX. MAST ARM IN SE QUADRANT
				COUNTY TOTAL	1.0
PEORIA COUNTY	BARTONVILLE	US 24 (Mckinley) & McClure	100/0	1.0	INSTALL ON EX. MAST ARM IN NE QUADRANT
	PEORIA COUNTY	IL 116 (Plank) & Maxwell	100/0	1.0	INSTALL ON EX. MAST ARM IN SW QUADRANT
				COUNTY TOTAL	2.0

CAT 6 ETHERNET CABLE					
COUNTY	CITY	LOCATION	FUND CODE STATE / LOCAL AGENCY	QTY. (FOOT)	
KNOX COUNTY	GALESBURG	IL 41 (Main) & Linwood	100/0	174.0	
		US 150 (Main) & Grand	100/0	381.0	
		US 150 (Main) & Allens	100/0	71.0	
		IL 41 (Linwood) & Monmouth	100/0	140.5	
		Main & Farnham	80/20	298.5	
MARSHALL COUNTY	LACON	IL 17 (Fifth) & High	100/0	72.0	
		IL 17 (Fifth) & IL 26 (Prairie)	100/0	166.5	
				COUNTY TOTAL	238.5
MCDONOUGH COUNTY	MACOMB	US 67 (Lafayette) & Pierce	100/0	150.5	
		US 67 (Lafayette) & US 136 (Calhoun)	100/0	69.0	
				COUNTY TOTAL	219.5
PEORIA	PEORIA	IL 8 (Western) & MLK Jr.	100/0	84.0	
		IL 8 (Western) & IL 116 (Howett)	100/0	165.5	
				COUNTY TOTAL	249.5

COMMUNICATIONS VAULT					
COUNTY	CITY	LOCATION	FUND CODE STATE / LOCAL AGENCY	QTY. (EACH)	NOTES
TAZEWELL COUNTY	CREVE COEUR	US 24/ IL 29 (Main St.) Hill	100/0	1.0	SEE PLANS FOR DETAILS
				COUNTY TOTAL	1.0

TRAFFIC SIGNAL BATTERY BACKUP SYSTEM							
COUNTY	CITY	LOCATION	FUND CODE STATE / LOCAL AGENCY	QTY. (EACH)			
HENDERSON COUNTY	HENDERSON COUNTY	US 34 & Carman	100/0	1.0			
				COUNTY TOTAL	1.0		
KNOX COUNTY	GALESBURG	US 150 (Henderson) & Home	90/10	1.0			
		US 150 (Henderson) & Carl Sandburg	90/10	1.0			
		US 150 (Henderson) & Dayton	90/10	1.0			
		US 150 (Henderson) & Fremont	90/10	1.0			
		US 150 (Henderson) & Losey	90/10	1.0			
		US 150 (Main) & Henderson	90/10	1.0			
				COUNTY TOTAL	6.0		
MARSHALL COUNTY	LACON	IL 17 (Fifth) & High	90/10	1.0			
		IL 17 (Fifth) & IL 26 (Prairie)	100/0	1.0			
				COUNTY TOTAL	2.0		
MCDONOUGH COUNTY	GOOD HOPE	US 67 (Monmouth) & Main	90/10	1.0			
	MACOMB	US 67 (Lafayette) & University	100/0	1.0			
		US 67 (Jackson) & Ward	90/10	1.0			
				COUNTY TOTAL	3.0		
PEORIA COUNTY	PEORIA	IL 8 (Farmington) & Main	93.3/6.7	1.0			
		IL 40 (Knoxville) & Bird/ Frye	90/10	1.0			
		IL 40 (Knoxville) & Northpoint	80/20	1.0			
		IL 40 (Knoxville) & Detweiler	90/10	1.0			
		IL 40 (Knoxville) & Northmoor/ Oac	90/10	1.0			
		IL 40 (Knoxville) & Elaine/ Proctor Hospital	80/20	1.0			
		IL 40 (Knoxville) & Lyndale	90/10	1.0			
		IL 40 (Knoxville) & Thrush	90/10	1.0			
		IL 40 (Knoxville) & Richmond	90/10	1.0			
		US 150 (War Memorial) & Academic	80/20	1.0			
		US 150 (War Memorial) & Willow Knolls Ct./ Baring Trace	80/20	1.0			
		PEORIA COUNTY	IL 40 (Knoxville) & Woodside	100/0	1.0		
						COUNTY TOTAL	11.0
		TAZEWELL COUNTY	CREVE COEUR	IL 29 (Main St.) & Wesley Rd.	93.3/6.7	1.0	
IL 116 (Main St) & I-74 (EB Ramps)	100/0			1.0			
EAST PEORIA	IL 116 (Main St) & I-74 (WB Ramps)		100/0	1.0			
	IL 116 (Main St) & Washington		90/10	1.0			
	IL 116 (Main St) & Gold/ Kroger Entrance		80/20	1.0			
	US 150/ IL 8 (Camp) & Washington		100/0	1.0			
MARQUETTE HEIGHTS	Camp & Riverfront Dr Ramp (I-3)		100/0	1.0			
	IL 29 (Main St.) & LaSalle Blvd.		93.3/6.7	1.0			
				COUNTY TOTAL	8.0		

BREAKAWAY DEVICE, COUPLING WITH STAINLESS STEEL SCREEN					
COUNTY	CITY	LOCATION	FUND CODE STATE / LOCAL AGENCY	QTY. (EACH)	
PEORIA COUNTY	PEORIA	IL 29 (Adams) & Lorentz	100/0	4.0	
				COUNTY TOTAL	4.0
TAZEWELL COUNTY	CREVE COEUR	US 24/ IL 29 (Main St.) Hill	100/0	4.0	
				COUNTY TOTAL	4.0

WIRELESS ETHERNET RADIO SCHEDULE			
LOCATION 1	INSTALLATION (MOUNTING HEIGHT)	LOCATION 2	INSTALLATION (MOUNTING HEIGHT)
IL 41 (MAIN) & LINWOOD	CAMERA POLE, 20 FT. ON NW QUAD MAST ARM STRAIN POLE (43 FT)	IL 41 (LINWOOD) & MONMOUTH	SW QUAD MAST ARM STRAIN POLE (43 FT)
US 150 (MAIN) & US 150 GRAND)	CAMERA POLE, 20 FT. ON SE QUAD MAST ARM STRAIN POLE (43 FT)	US 150 (MAIN) & ALLENS RD	EX. LIGHT POLE (43 FT)
US 150 (MAIN) & US 150 GRAND)	CAMERA POLE, 20 FT. ON SE QUAD MAST ARM STRAIN POLE (43 FT)	MAIN & FARNHAM	CAMERA POLE, 20 FT. ON SE QUAD MAST ARM STRAIN POLE (43 FT)
IL 17 (FIFTH) & IL 26 (PRAIRIE)	SE QUAD MAST ARM STRAIN POLE (43 FT)	IL 17 (FIFTH) & HIGH	EX. NW QUAD MAST ARM (20 FT)
US 67 (LAFAYETTE) & US 136 (CALHOUN)	EX. LIGHT POLE IN NW QUAD (43 FT)	US 67 (LAFAYETTE) & PIERCE	NE QUAD MAST ARM STRAIN POLE (43 FT)
IL 8 (WESTERN) & MLK JR. DR.	SE QUAD MAST ARM STRAIN POLE (43 FT)	IL 8 (WESTERN) & IL 116 (HOWETT)	EX. LIGHT POLE IN NW QUAD (43 FT)

MODEL: D:\p4\h... FILE NAME: S:\CEN\W\W\ORD\ESP\AN\Hanson.dwg 68H18 04 ITS System 2023-1068H18 04 ITS System 2023-1.dwg

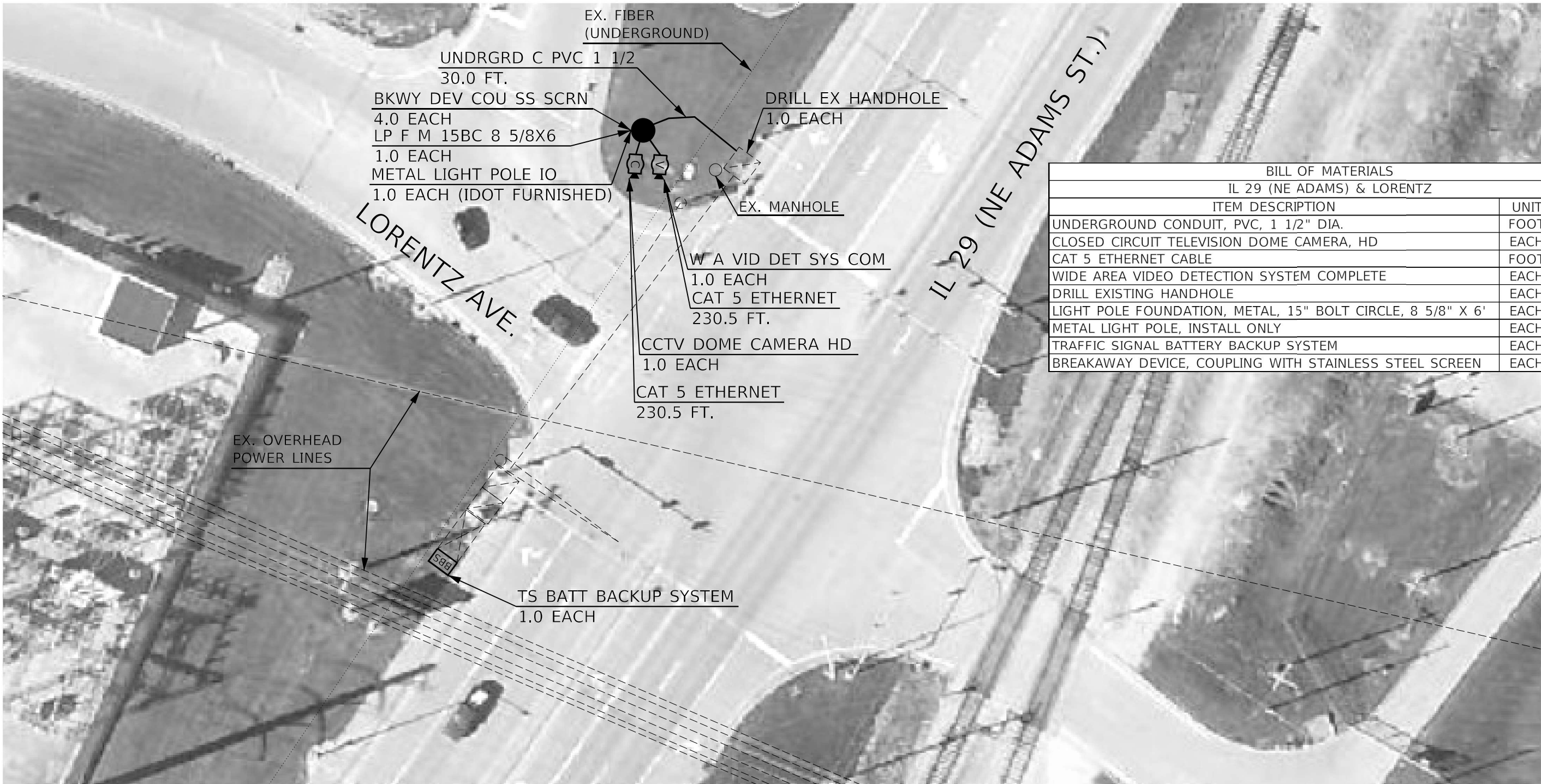
USER NAME = hansonj	DESIGNED -	REVISED -
	DRAWN -	REVISED -
PLOT SCALE = 23,8272 * / in.	CHECKED -	REVISED -
PLOT DATE = 7/8/2022	DATE -	REVISED -

**STATE OF ILLINOIS
DEPARTMENT OF TRANSPORTATION**

SCHEDULE OF QUANTITIES - CONTINUED

SCALE: SHEET OF SHEETS STA. TO STA.

F.A. RTE.	SECTION	COUNTY	TOTAL SHEETS	SHEET NO.
VAR.	D4 ITS SYSTEM 2023-1	VARIOUS	22	6
			CONTRACT NO. 68H18	
		ILLINOIS	FED. AID PROJECT	



BILL OF MATERIALS		
IL 29 (NE ADAMS) & LORENTZ		
ITEM DESCRIPTION	UNIT	QTY.
UNDERGROUND CONDUIT, PVC, 1 1/2" DIA.	FOOT	30.0
CLOSED CIRCUIT TELEVISION DOME CAMERA, HD	EACH	1.0
CAT 5 ETHERNET CABLE	FOOT	461.0
WIDE AREA VIDEO DETECTION SYSTEM COMPLETE	EACH	1.0
DRILL EXISTING HANDHOLE	EACH	1.0
LIGHT POLE FOUNDATION, METAL, 15" BOLT CIRCLE, 8 5/8" X 6'	EACH	1.0
METAL LIGHT POLE, INSTALL ONLY	EACH	1.0
TRAFFIC SIGNAL BATTERY BACKUP SYSTEM	EACH	1.0
BREAKAWAY DEVICE, COUPLING WITH STAINLESS STEEL SCREEN	EACH	4.0

NOTES:

1. THE CONTRACTOR SHALL INSTALL THE IDOT FURNISHED METAL LIGHT POLE ON THE PROPOSED METAL FOUNDATION AND LOCATED OUTSIDE OF THE BDE CLEAR ZONE.

MODEL Path: \\sccen\work\0323\0323-1\68H18 D4 ITS System 2023-1.dgn
 FILE NAME: S:\CEN\WORK\0323\0323-1\68H18 D4 ITS System 2023-1.dgn

NOT TO SCALE

USER NAME = hansonj	DESIGNED -	REVISED -
	DRAWN -	REVISED -
PLOT SCALE = 23,8272 * / in.	CHECKED -	REVISED -
PLOT DATE = 7/8/2022	DATE -	REVISED -

**STATE OF ILLINOIS
DEPARTMENT OF TRANSPORTATION**

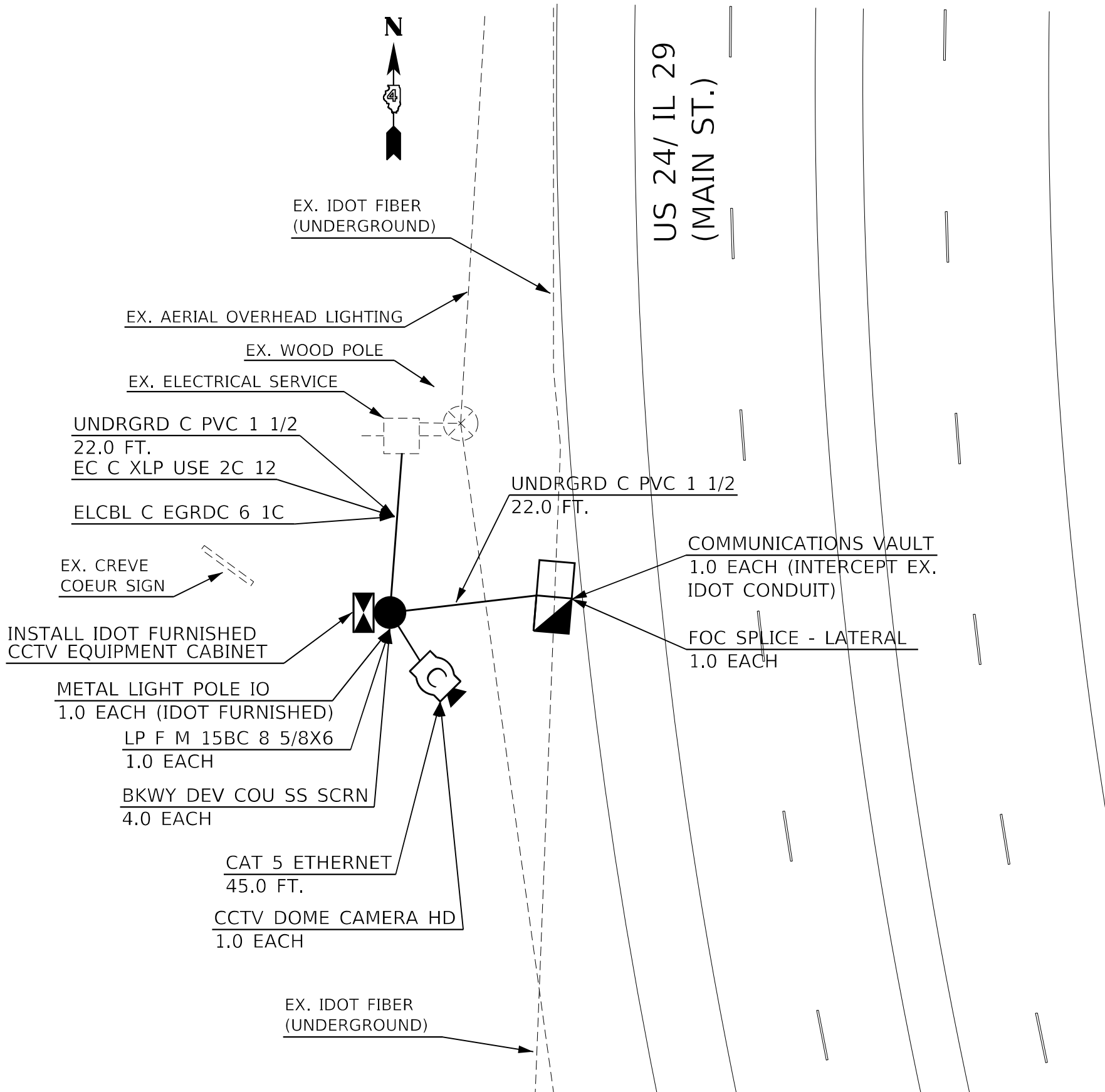
**PROPOSED ITS PLANS
IL 29 (NE ADAMS) & LORENTZ - PEORIA**

SCALE: SHEET OF SHEETS STA. TO STA.

F.A. RTE.	SECTION	COUNTY	TOTAL SHEETS	SHEET NO.
VAR.	D4 ITS SYSTEM 2023-1	PEORIA	22	7
			CONTRACT NO. 68H18	
		ILLINOIS FED. AID PROJECT		



US 24/ IL 29
(MAIN ST.)



BILL OF MATERIALS		
US 24/ IL 29 (Main St.) Hill		
ITEM DESCRIPTION	UNIT	QTY.
UNDERGROUND CONDUIT, PVC, 1 1/2" DIA.	FOOT	44.0
CLOSED CIRCUIT TELEVISION DOME CAMERA, HD	EACH	1.0
CAT 5 ETHERNET CABLE	FOOT	35.0
LIGHT POLE FOUNDATION, METAL, 15" BOLT CIRCLE, 8 5/8" X 6'	EACH	1.0
METAL LIGHT POLE, INSTALL ONLY	EACH	1.0
FIBER OPTIC CABLE SPLICE - LATERAL	EACH	1.0
COMMUNICATIONS VAULT	EACH	1.0
BREAKAWAY DEVICE, COUPLING WITH STAINLESS STEEL SCREEN	EACH	4.0

NOTES:

1. THE CONTRACTOR SHALL INTERCEPT THE EXISTING IDOT CONDUIT AS SHOWN IN THE PLANS AND INSTALL A COMMUNICATIONS VAULT AT THE INTERCEPTION POINT. THIS WORK WILL NOT BE PAID FOR SEPARATELY, BUT SHALL BE INCLUDED IN THE BID PRICE OF THE COMMUNICATIONS VAULT.
2. THE CONTRACTOR SHALL FURNISH AND INSTALL FIBER OPTIC CABLE WITH A MINIMUM OF 12 SINGLE MODE FIBERS FROM THE PROPOSED COMMUNICATIONS VAULT TO THE PROPOSED CAMERA CABINET. THIS WORK WILL NOT BE PAID FOR SEPARATELY BUT SHALL BE INCLUDED IN THE COST OF THE PROPOSED FIBER OPTIC CABLE SPLICE - LATERAL.
3. THE EXISTING ELECTRICAL SERVICE WILL BE RE-USED FOR THE PROPOSED CAMERA INSTALLATION.
4. THE CONTRACTOR SHALL FURNISH AND INSTALL ELECTRIC AND GROUND CABLES FROM THE EXISTING SERVICE DISCONNECT TO THE PROPOSED CCTV EQUIPMENT CABINET (IDOT FURNISHED.) THE COST OF THIS WORK SHALL BE INCLUDED IN THE BID PRICE FOR THE PROPOSED METAL LIGHT POLE, INSTALL ONLY.
5. THE CONTRACTOR SHALL INSTALL THE IDOT FURNISHED CCTV EQUIPMENT CABINET ON THE IDOT FURNISHED METAL LIGHT POLE, INSTALL ONLY. THE COST OF THIS WORK SHALL BE INCLUDED IN THE BID PRICE FOR THE METAL LIGHT POLE, INSTALL ONLY.
6. THE CONTRACTOR SHALL INSTALL THE IDOT FURNISHED METAL LIGHT POLE ON THE PROPOSED METAL FOUNDATION AND LOCATED OUTSIDE OF THE BDE CLEAR ZONE.

MODEL: D:\p\h\...
 FILE NAME: S:\CEN\W\W\ORD\DESIGN\AN\Hanson\68H18 D4 ITS System 2023-1\68H18 D4 ITS System 2023-1.dgn

NOT TO SCALE

USER NAME = hansonj DESIGNED - DRAWN - PLOT SCALE = 23,8272 * / in. PLOT DATE = 7/8/2022	DESIGNED - DRAWN - CHECKED - DATE -	REVISED - REVISED - REVISED - REVISED -	STATE OF ILLINOIS DEPARTMENT OF TRANSPORTATION	PROPOSED ITS PLANS US 24/IL 29 (MAIN ST.) HILL - CREVE COEUR	F.A. RTE. SECTION COUNTY TOTAL SHEETS SHEET NO.	D4 ITS SYSTEM 2023-1 TAZEWELL 22 8	CONTRACT NO. 68H18 ILLINOIS FED. AID PROJECT
--	--	--	---	---	---	---	---

RADIO ACTIVATED SOLAR ADVANCE FLASHING BEACON SYSTEM (COMPLETE) LOCATION A



BILL OF MATERIALS		
ITEM DESCRIPTION	UNIT	QTY.
RADIO ACTIVATED SOLAR ADVANCE FLASHING BEACON SYSTEM (COMPLETE)	EACH	2.0

RADIO ACTIVATED SOLAR ADVANCE FLASHING BEACON SYSTEM (COMPLETE) LOCATION B



NOTES:

1. THE CONTRACTOR SHALL REMOVE AND DISPOSE OF THE EXISTING SOLAR ADVANCE FLASHING BEACON SYSTEM OFF OF THE RIGHT-OF-WAY. THIS WORK WILL NOT BE PAID FOR SEPARATELY, BUT SHALL BE INCLUDED IN THE BID PRICE OF THE PROPOSED RADIO ACTIVATED SOLAR ADVANCE FLASHING BEACON SYSTEM (COMPLETE.)
2. THE CONTRACTOR SHALL FURNISH AND INSTALL RADIO ACTIVATED SOLAR ADVANCE FLASHING BEACON SYSTEM CONSISTING OF A METAL SCREW IN FOUNDATION, GALVANIZED STEEL TRAFFIC SIGNAL POST WITH GALVANIZED STEEL BREAKAWAY BASE, ROADWAY SIGN, DUAL YELLOW LED FLASHING BEACONS, SOLAR PANEL, BATTERIES, BRACKETS AND ALL OTHER ITEMS SHOWN ON THE PLAN SHEET DETAIL. THIS WORK WILL BE INCLUDED IN THE BID PRICE FOR THE RADIO ACTIVATED SOLAR ADVANCE FLASHING BEACON SYSTEM (COMPLETE).
3. THE CONTRACTOR SHALL FURNISH AND INSTALL ALL ITEMS REQUIRED FOR INSTALLATION AND TO MAKE THE SYSTEM FULLY OPERATIONAL INCLUDING, BUT NOT LIMITED TO, HARDWARE, BRACKETS, STAINLESS STEEL BANDING, NIPPLES, GROMMETS, WIRE, AND ALL OTHER ITEMS.

NOT TO SCALE

MODEL: D:\p\h\... FILE NAME: S:\CEN\W\ORD\DESIGN\AN\barson\68H18 D4 ITS System 2023-1\68H18 D4 ITS System 2023-1.dgn

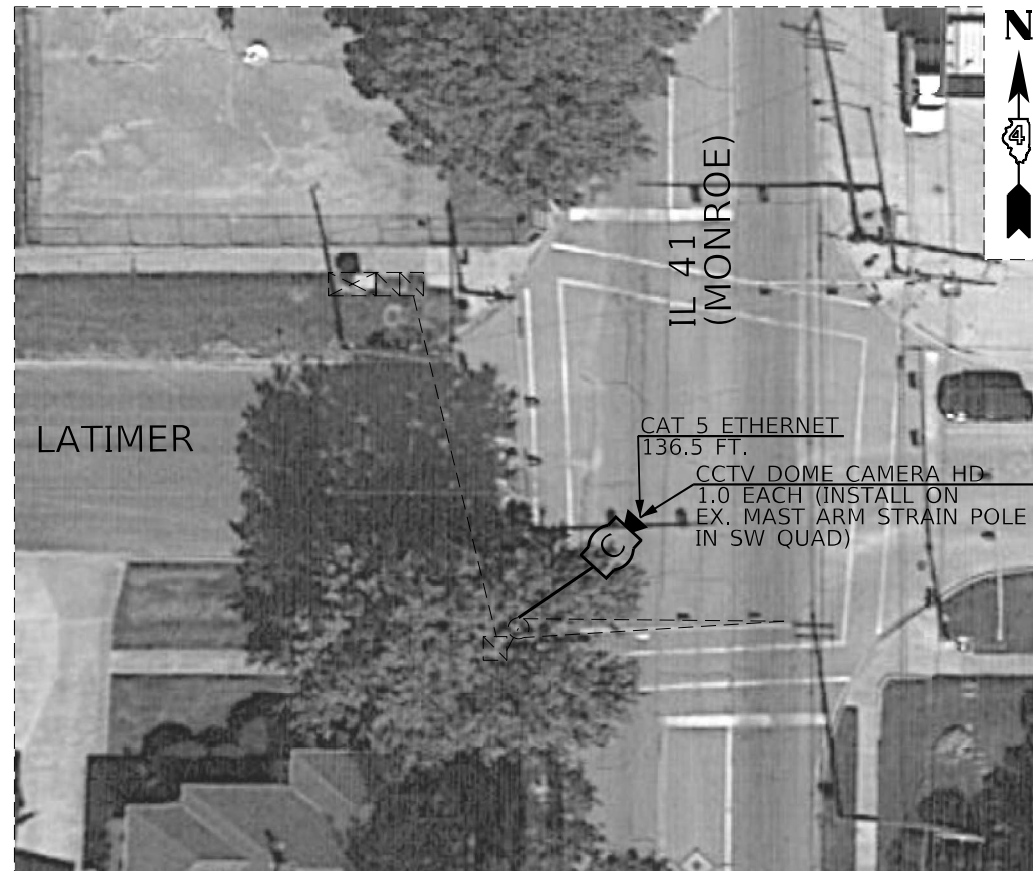
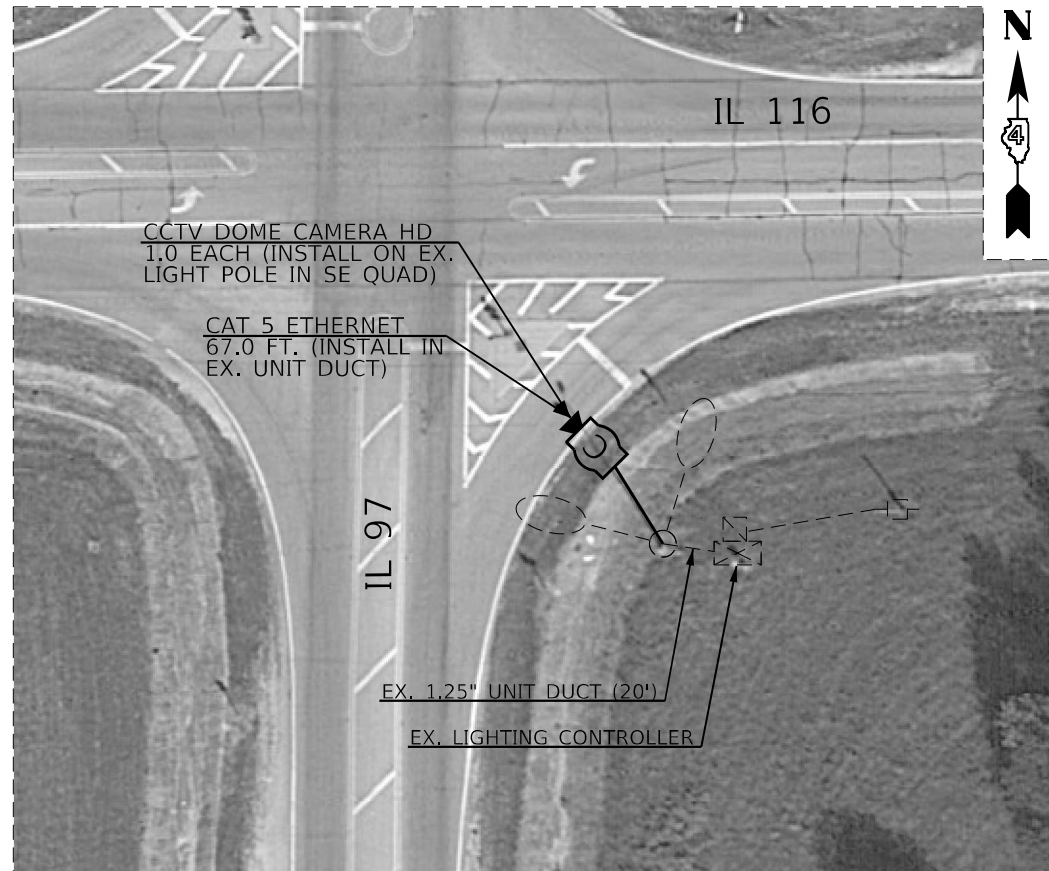
USER NAME = hansonj	DESIGNED -	REVISED -
PLOT SCALE = 23,8272 * / in.	DRAWN -	REVISED -
PLOT DATE = 7/8/2022	CHECKED -	REVISED -
	DATE -	REVISED -

STATE OF ILLINOIS
DEPARTMENT OF TRANSPORTATION

PROPOSED RADIO ACTIVATED SOLAR ADVANCE
FLASHING BEACON SYSTEM PLANS

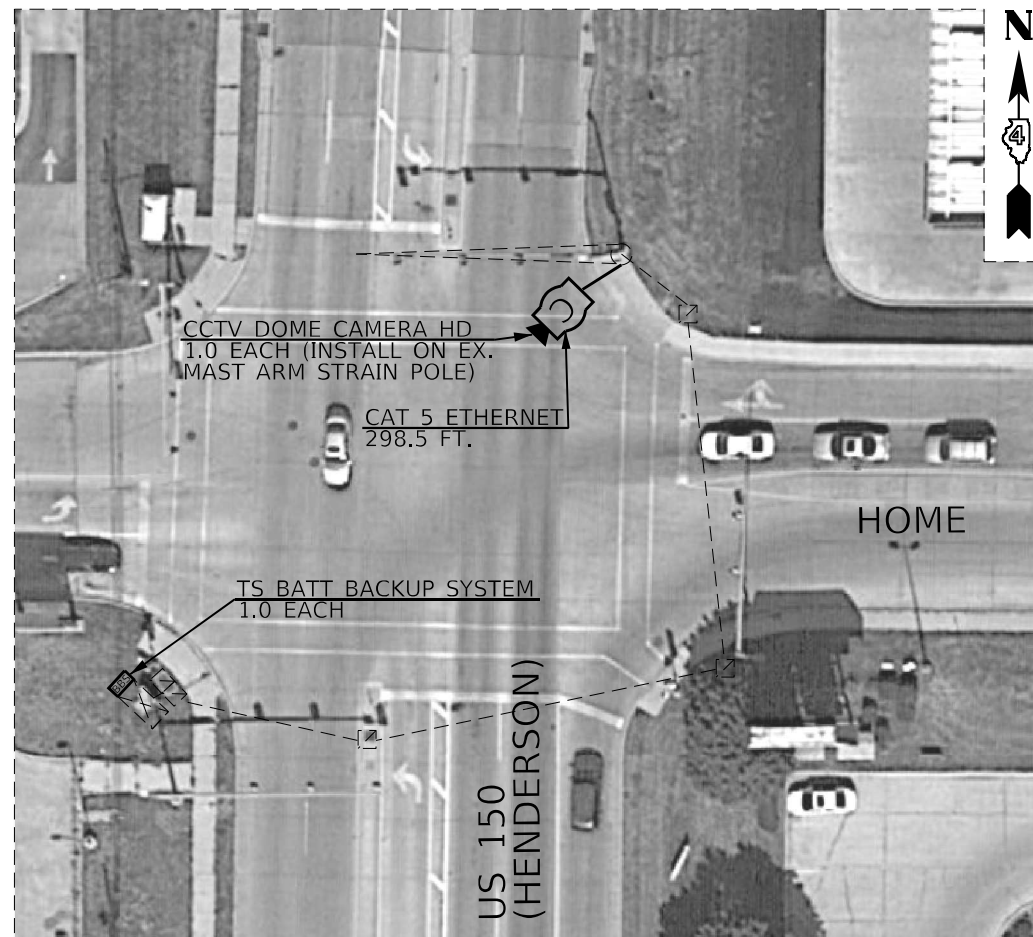
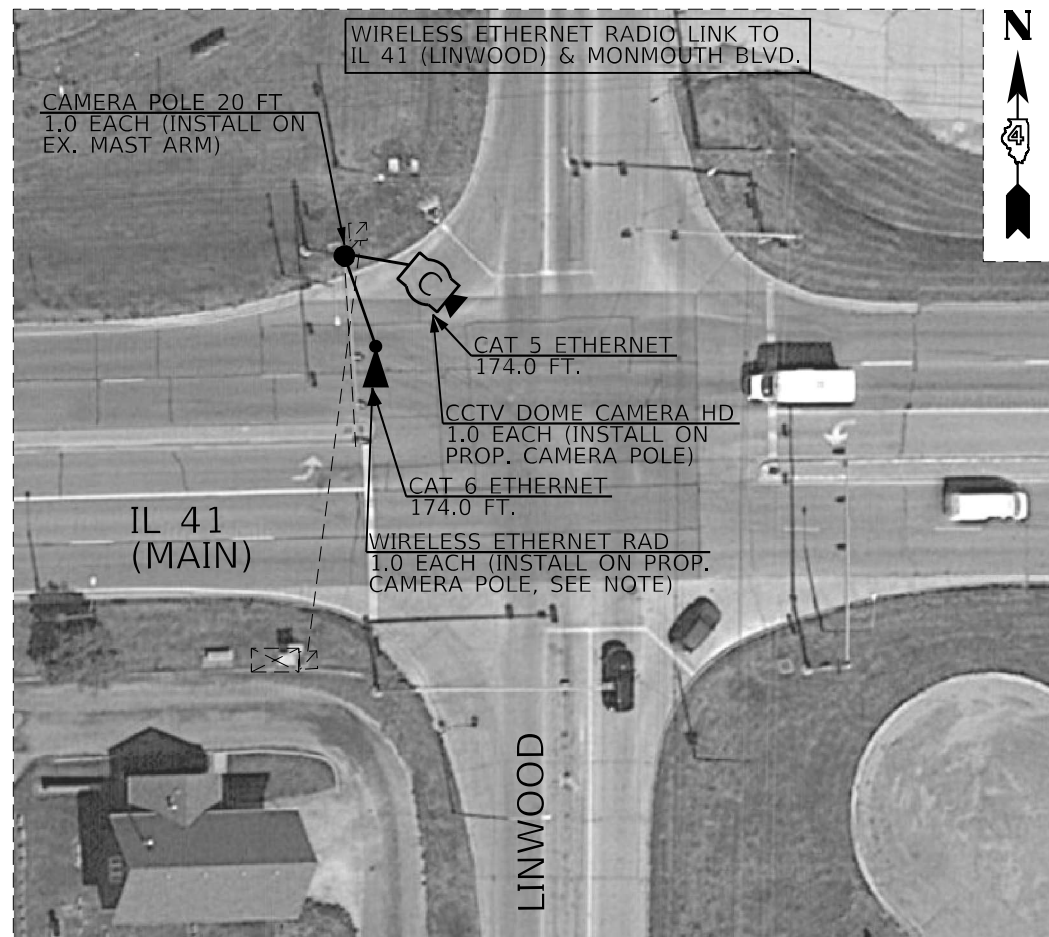
SCALE: SHEET OF SHEETS STA. TO STA.

F.A. RTE.	SECTION	COUNTY	TOTAL SHEETS	SHEET NO.
VAR.	D4 ITS SYSTEM 2023-1	TAZEWELL	22	9
			CONTRACT NO. 68H18	
		ILLINOIS FED. AID PROJECT		



MINIMIZE CAT 5 ETHERNET CABLE SLACK IN HANDHOLES AT US 150 (HENDERSON) & HOME

BILL OF MATERIALS		
ITEM DESCRIPTION	UNIT	QTY.
CLOSED CIRCUIT TELEVISION DOME CAMERA, HD	EACH	4.0
CAT 5 ETHERNET CABLE	FOOT	676.0
CAT 6 ETHERNET CABLE	FOOT	174.0
CAMERA POLE, 20 FT.	EACH	1.0
WIRELESS ETHERNET RADIO	EACH	1.0
TRAFFIC SIGNAL BATTERY BACKUP SYSTEM	EACH	1.0



- NOTES:
1. THE CONTRACTOR SHALL FIELD VERIFY THAT A CLEAR LINE OF SIGHT EXISTS BETWEEN THE TWO RADIOS PRIOR TO EQUIPMENT INSTALLATION. IN THE EVENT THAT TWO RADIOS DO NOT HAVE THE REQUIRED LINE OF SIGHT, THE CONTRACTOR SHALL NOTIFY THE RESIDENT ENGINEER FOR APPROVAL TO RELOCATE ONE OR MORE RADIOS TO A NEW LOCATION THAT HAS LINE OF SIGHT. THERE WILL BE NO ADDITIONAL PAYMENT IF ONE OR MORE RADIOS NEEDS TO BE RELOCATED TO A LOCATION OTHER THAN THE ONE SHOWN IN THE PLANS.
 2. SEE THE WIRELESS ETHERNET RADIO SCHEDULE ON SHEET 6 FOR INSTALLATION DETAILS.
 3. THE CONTRACTOR SHALL INSTALL THE PROPOSED CAT 5 ETHERNET CABLE INSIDE THE EXISTING UNIT DUCT. THE COST OF THIS WORK SHALL BE INCLUDED IN THE COST OF THE CAT 5 ETHERNET CABLE.
 4. AT US 150 (HENDERSON) & HOME, THE CONTRACTOR SHALL INSTALL MINIMAL AMOUNTS OF SLACK CABLE OF CAT 5 ETHERNET CABLE TO KEEP THE TOTAL CABLE LENGTH LESS THAN 300 FT.

MODEL: D:\p\h\... FILE NAME: S:\CEN\W\W\ORD\DESIGN\AN\hanson\68H18 D4 ITS System 2023-1.dgn

USER NAME = hansonj	DESIGNED -	REVISED -
PLOT SCALE = 23,8272 * / in.	DRAWN -	REVISED -
PLOT DATE = 7/8/2022	CHECKED -	REVISED -
	DATE -	REVISED -

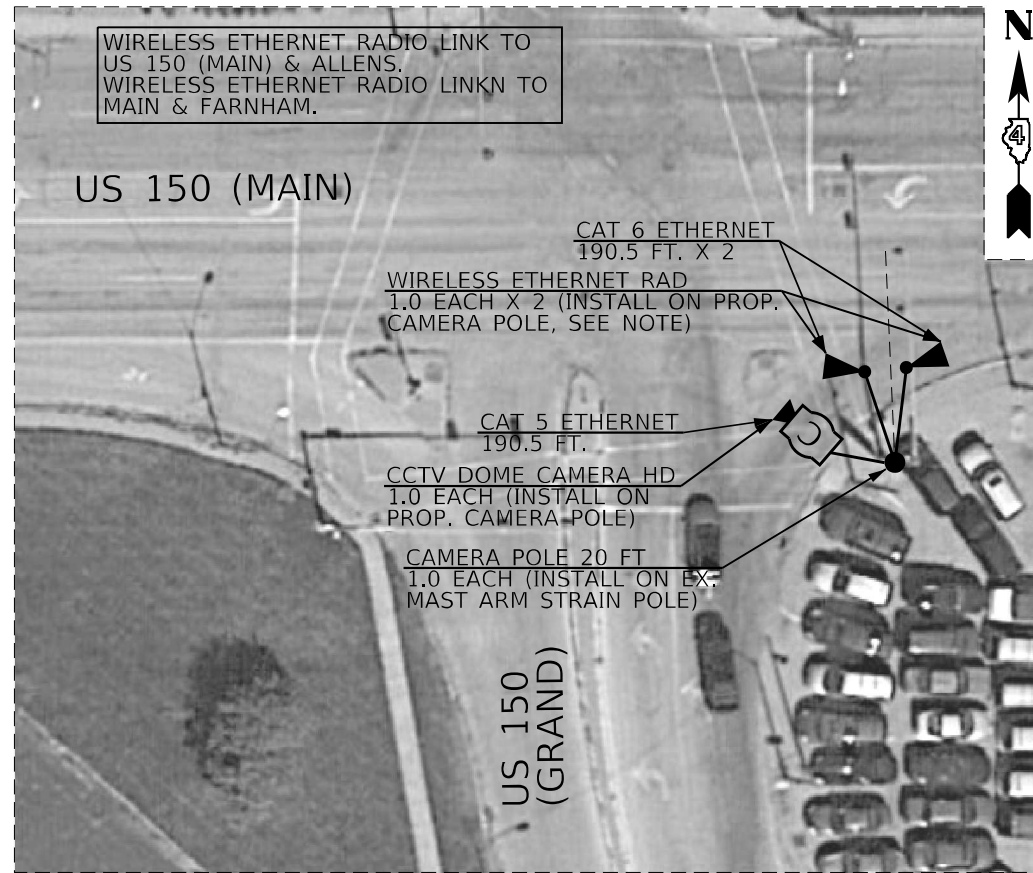
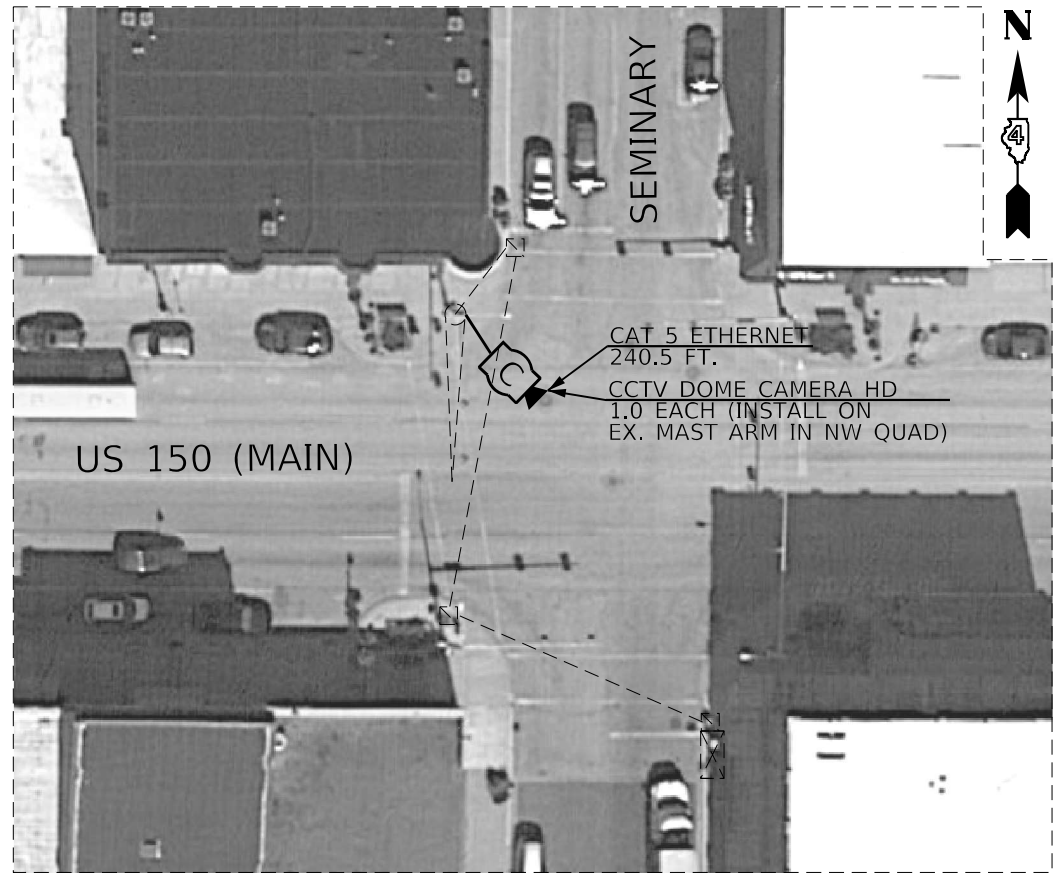
STATE OF ILLINOIS
DEPARTMENT OF TRANSPORTATION

PROPOSED ITS PLANS

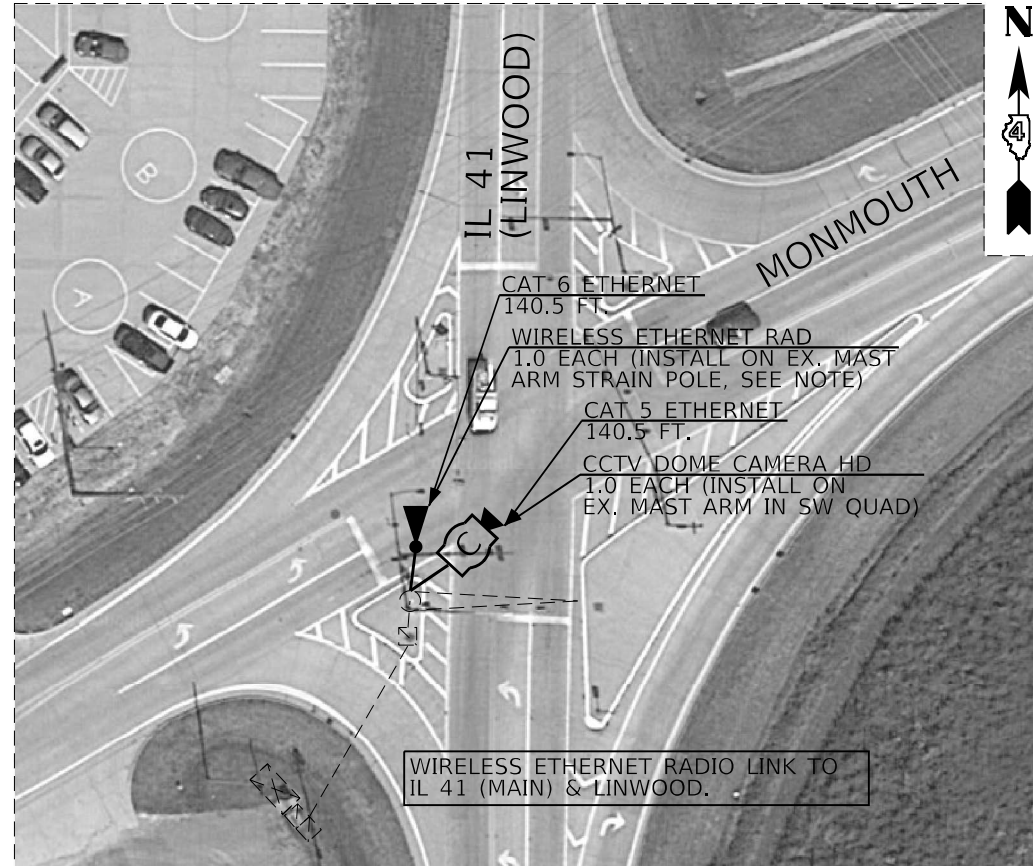
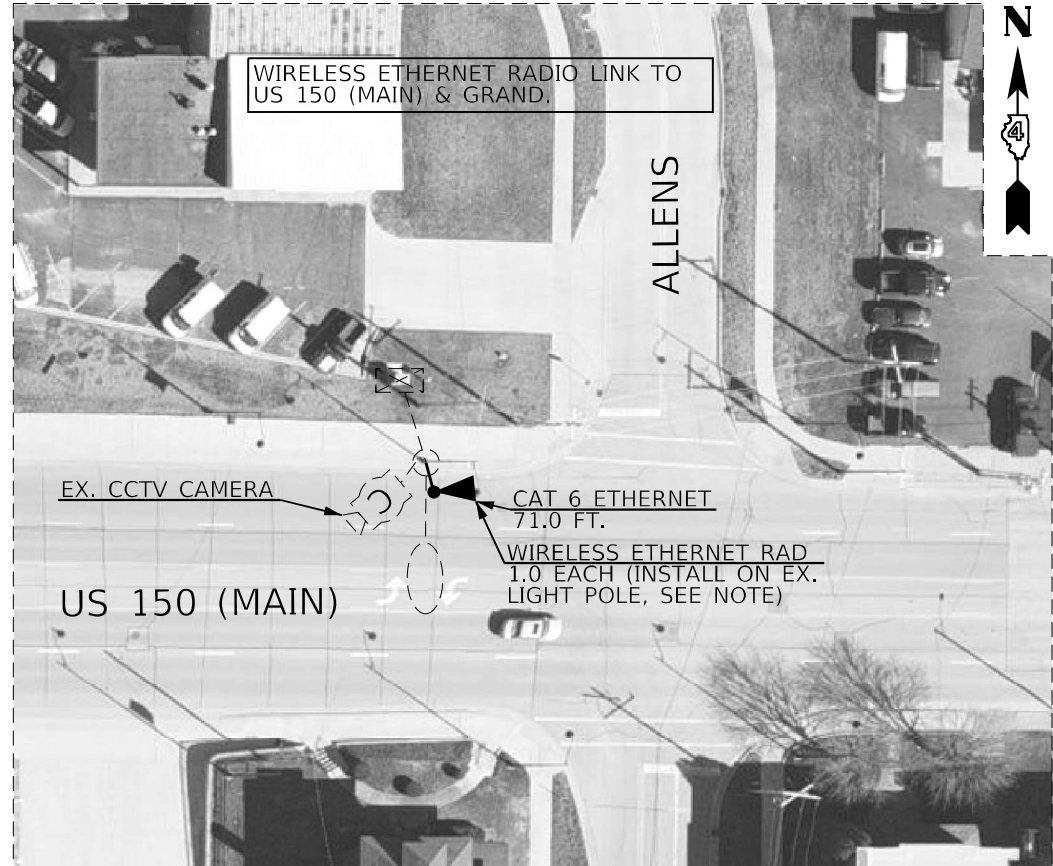
SCALE: SHEET OF SHEETS STA. TO STA.

F.A. RTE.	SECTION	COUNTY	TOTAL SHEETS	SHEET NO.
VAR.	D4 ITS SYSTEM 2023-1	VARIOUS	22	10
			CONTRACT NO. 68H18	
		ILLINOIS FED. AID PROJECT		

NOT TO SCALE



BILL OF MATERIALS		
ITEM DESCRIPTION	UNIT	QTY.
CLOSED CIRCUIT TELEVISION DOME CAMERA, HD	EACH	3.0
CAT 5 ETHERNET CABLE	FOOT	571.5
CAT 6 ETHERNET CABLE	FOOT	592.5
CAMERA POLE, 20 FT.	EACH	1.0
WIRELESS ETHERNET RADIO	EACH	4.0



- NOTES:
1. THE CONTRACTOR SHALL FIELD VERIFY THAT A CLEAR LINE OF SIGHT EXISTS BETWEEN THE TWO RADIOS PRIOR TO EQUIPMENT INSTALLATION. IN THE EVENT THAT TWO RADIOS DO NOT HAVE THE REQUIRED LINE OF LIGHT, THE CONTRACTOR SHALL NOTIFY THE RESIDENT ENGINEER FOR APPROVAL TO RELOCATE ONE OR MORE RADIOS TO A NEW LOCATION THAT HAS LINE OF SIGHT. THERE WILL BE NO ADDITIONAL PAYMENT IF ONE OR MORE RADIOS NEEDS TO BE RELOCATED TO A LOCATION OTHER THAN THE ONE SHOWN IN THE PLANS.
 2. SEE THE WIRELESS ETHERNET RADIO SCHEDULE ON SHEET 6 FOR INSTALLATION DETAILS.

MODEL: D:\p\h\... FILE NAME: S:\CEN\W\W\ORD\ESP\AN\hanson\# 68H18 D4 ITS System 2023-1\68H18 D4 ITS System 2023-1.dgn

USER NAME = hansonj	DESIGNED -	REVISED -
PLOT SCALE = 23,8272 * / in.	DRAWN -	REVISED -
PLOT DATE = 7/8/2022	CHECKED -	REVISED -
	DATE -	REVISED -

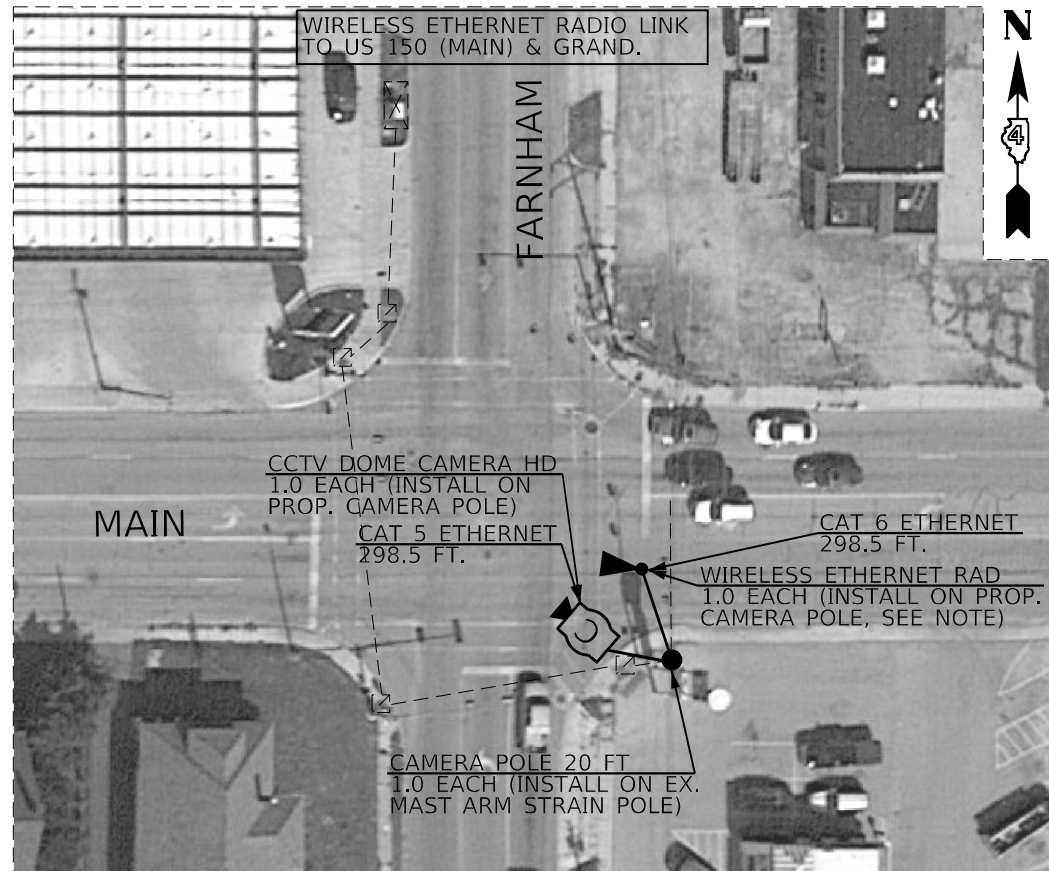
**STATE OF ILLINOIS
DEPARTMENT OF TRANSPORTATION**

PROPOSED ITS PLANS - CONTINUED

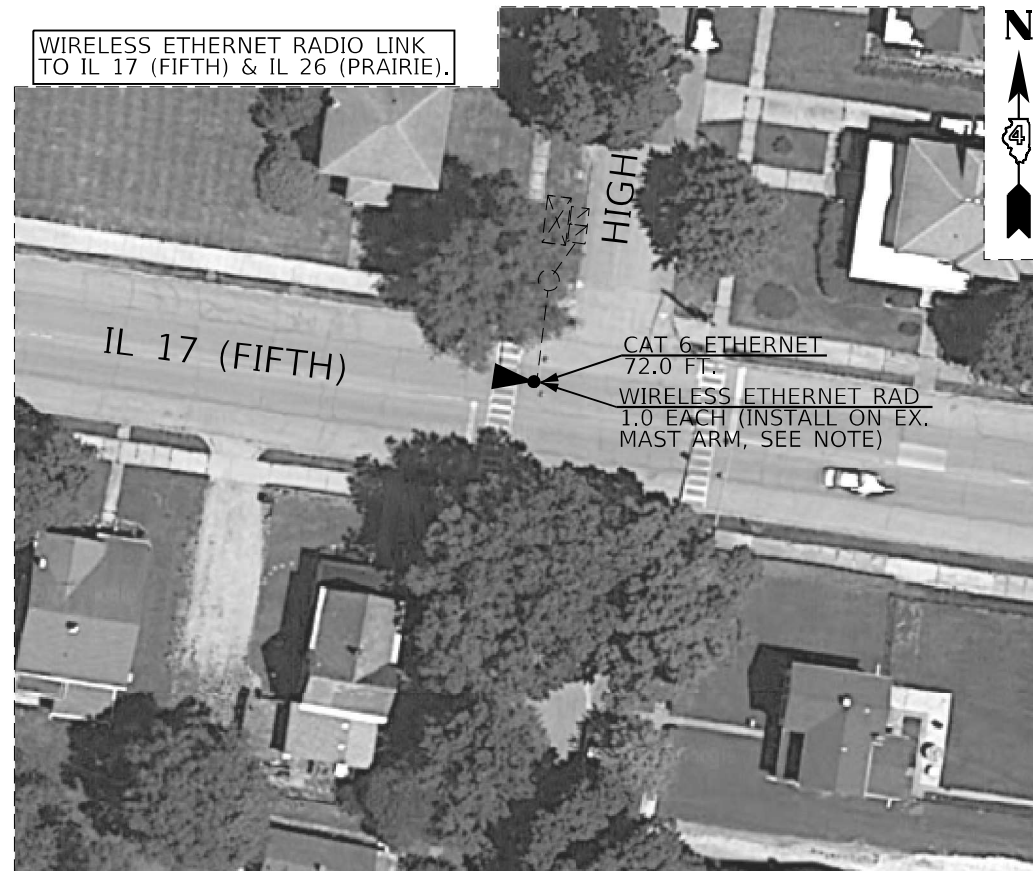
SCALE: SHEET OF SHEETS STA. TO STA.

F.A. RTE.	SECTION	COUNTY	TOTAL SHEETS	SHEET NO.
VAR.	D4 ITS SYSTEM 2023-1	VARIOUS	16	11
			CONTRACT NO. 68H18	
		ILLINOIS FED. AID PROJECT		

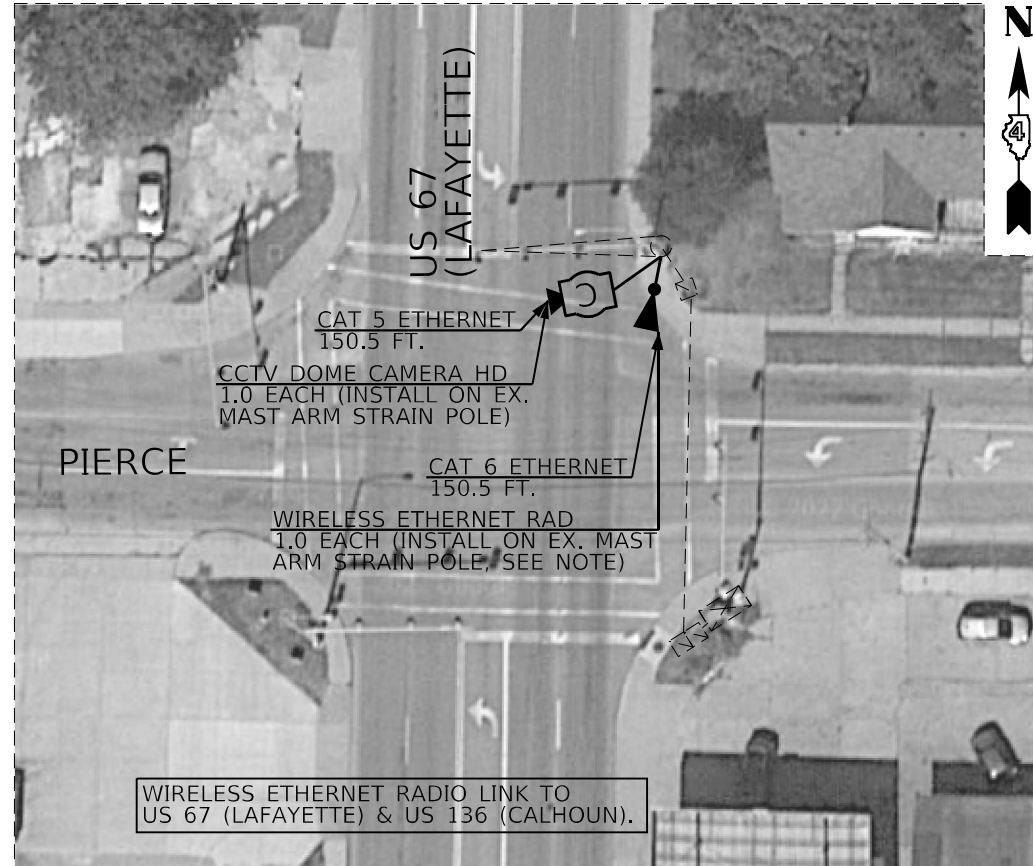
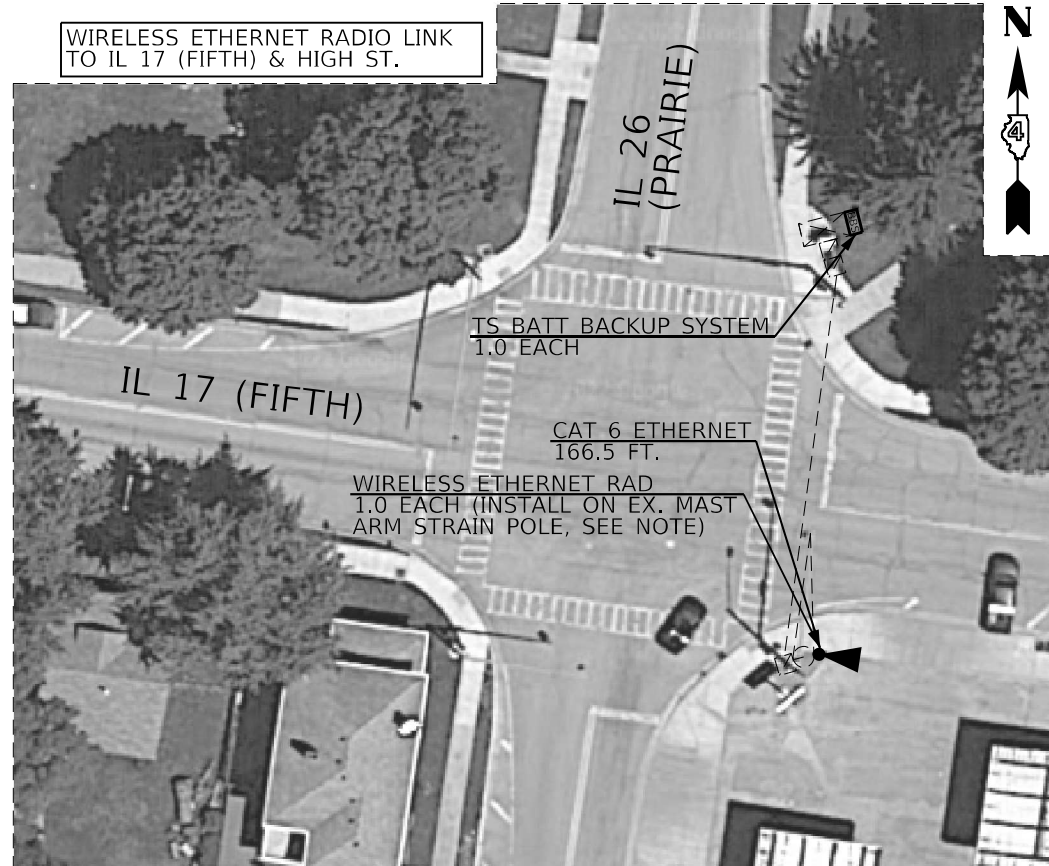
NOT TO SCALE



MINIMIZE CAT 5 & CAT 6 ETHERNET CABLE SLACK IN HANDHOLES AT MAIN & FARNHAM



BILL OF MATERIALS		
ITEM DESCRIPTION	UNIT	QTY.
CLOSED CIRCUIT TELEVISION DOME CAMERA, HD	EACH	2.0
CAT 5 ETHERNET CABLE	FOOT	449.0
CAT 6 ETHERNET CABLE	FOOT	687.5
CAMERA POLE, 20 FT.	EACH	1.0
WIRELESS ETHERNET RADIO	EACH	4.0
TRAFFIC SIGNAL BATTERY BACKUP SYSTEM	EACH	1.0



- NOTES:
1. THE CONTRACTOR SHALL FIELD VERIFY THAT A CLEAR LINE OF SIGHT EXISTS BETWEEN THE TWO RADIOS PRIOR TO EQUIPMENT INSTALLATION. IN THE EVENT THAT TWO RADIOS DO NOT HAVE THE REQUIRED LINE OF LIGHT, THE CONTRACTOR SHALL NOTIFY THE RESIDENT ENGINEER FOR APPROVAL TO RELOCATE ONE OR MORE RADIOS TO A NEW LOCATION THAT HAS LINE OF SIGHT. THERE WILL BE NO ADDITIONAL PAYMENT IF ONE OR MORE RADIOS NEEDS TO BE RELOCATED TO A LOCATION OTHER THAN THE ONE SHOWN IN THE PLANS.
 2. SEE THE WIRELESS ETHERNET RADIO SCHEDULE ON SHEET 6 FOR INSTALLATION DETAILS.
 3. AT MAIN & FARNHAM, THE CONTRACTOR SHALL INSTALL MINIMAL AMOUNTS OF SLACK CABLE FOR BOTH CAT 5 AND CAT 6 ETHERNET CABLES TO KEEP THE TOTAL LENGTH LESS THAN 300 FT. PER CABLE.

MODEL: D:\p\h\... FILE NAME: S:\CEN\W\W\ORD\ESP\AN\Hanson\# 68H18 D4 ITS System 2023-1\68H18 D4 ITS System 2023-1.dgn

USER NAME = hansonj	DESIGNED -	REVISED -
	DRAWN -	REVISED -
PLOT SCALE = 23,8272 * / in.	CHECKED -	REVISED -
PLOT DATE = 7/8/2022	DATE -	REVISED -

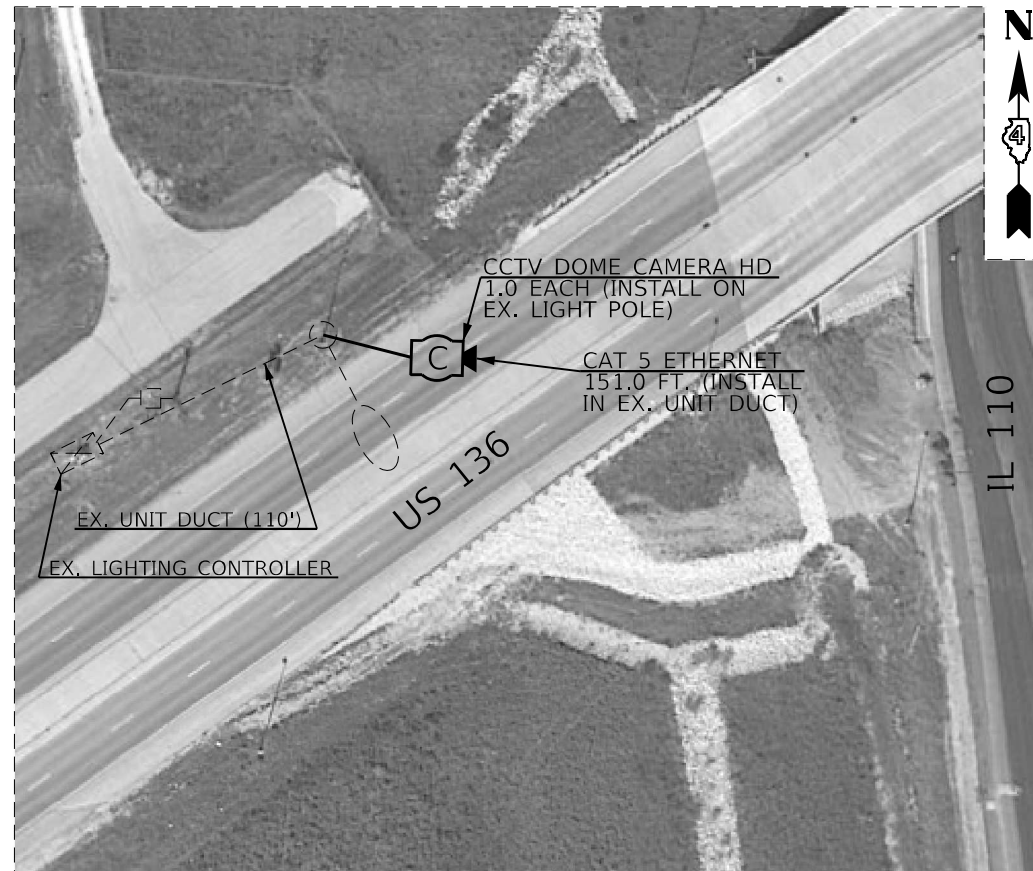
STATE OF ILLINOIS
DEPARTMENT OF TRANSPORTATION

PROPOSED ITS PLANS - CONTINUED

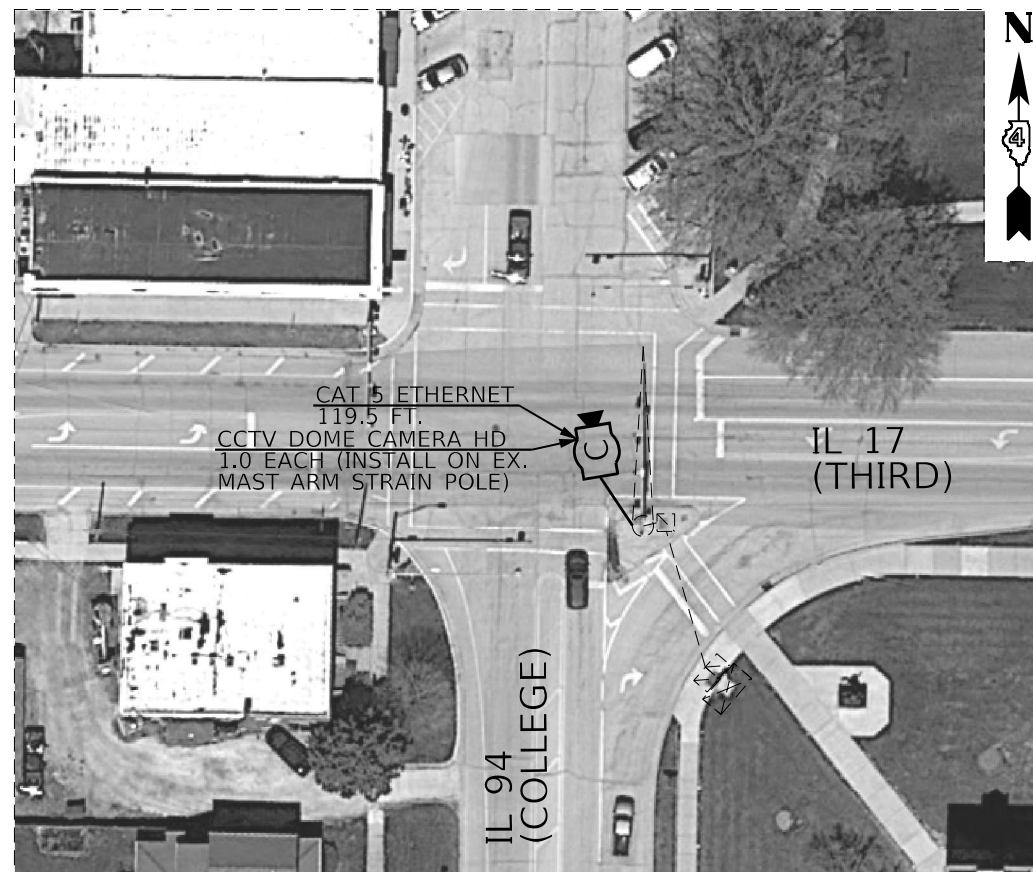
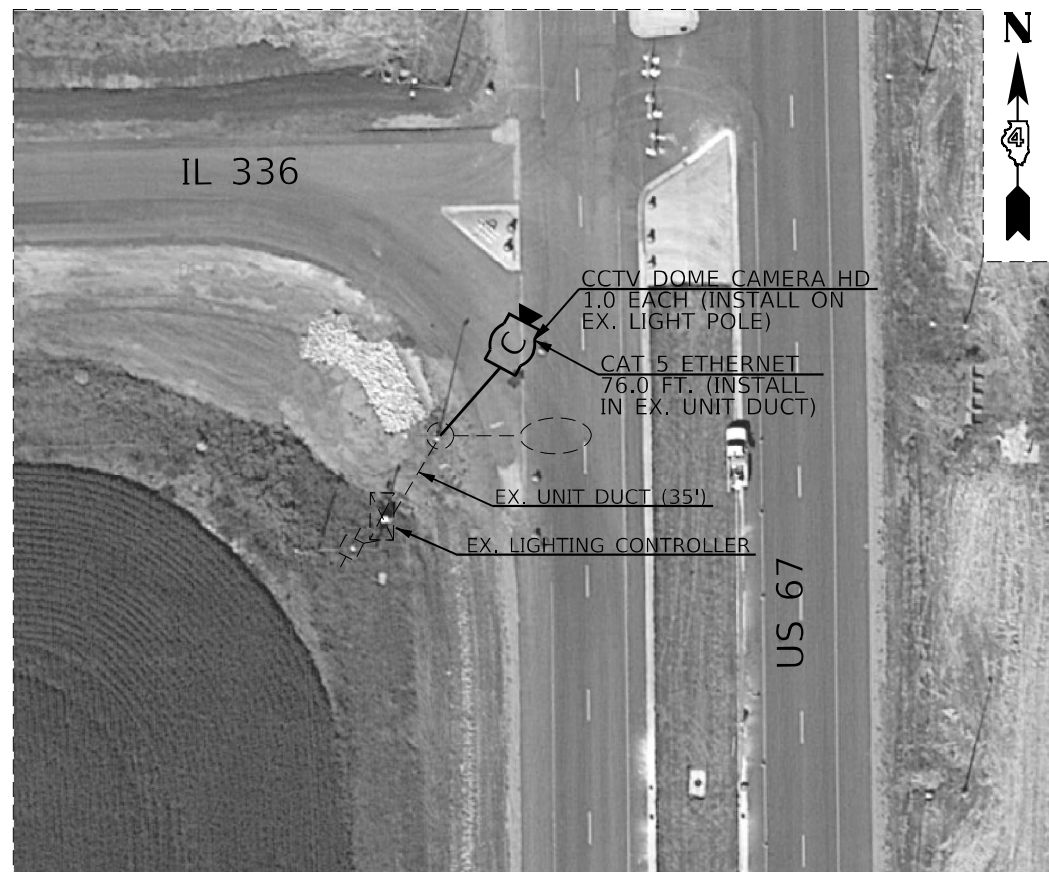
SCALE: SHEET OF SHEETS STA. TO STA.

F.A. RTE.	SECTION	COUNTY	TOTAL SHEETS	SHEET NO.
VAR.	D4 ITS SYSTEM 2023-1	VARIOUS	22	12
			CONTRACT NO. 68H18	
		ILLINOIS FED. AID PROJECT		

NOT TO SCALE



BILL OF MATERIALS		
ITEM DESCRIPTION	UNIT	QTY.
CLOSED CIRCUIT TELEVISION DOME CAMERA, HD	EACH	3.0
CAT 5 ETHERNET CABLE	FOOT	346.5
CAT 6 ETHERNET CABLE	FOOT	69.0
WIRELESS ETHERNET RADIO	EACH	1.0



- NOTES:
1. THE CONTRACTOR SHALL FIELD VERIFY THAT A CLEAR LINE OF SIGHT EXISTS BETWEEN THE TWO RADIOS PRIOR TO EQUIPMENT INSTALLATION. IN THE EVENT THAT TWO RADIOS DO NOT HAVE THE REQUIRED LINE OF LIGHT, THE CONTRACTOR SHALL NOTIFY THE RESIDENT ENGINEER FOR APPROVAL TO RELOCATE ONE OR MORE RADIOS TO A NEW LOCATION THAT HAS LINE OF SIGHT. THERE WILL BE NO ADDITIONAL PAYMENT IF ONE OR MORE RADIOS NEEDS TO BE RELOCATED TO A LOCATION OTHER THAN THE ONE SHOWN IN THE PLANS.
 2. SEE THE WIRELESS ETHERNET RADIO SCHEDULE ON SHEET 6 FOR INSTALLATION DETAILS.
 3. THE CONTRACTOR SHALL INSTALL THE PROPOSED CAT 5 ETHERNET CABLE INSIDE THE EXISTING UNIT DUCT. THE COST OF THIS WORK SHALL BE INCLUDED IN THE COST OF THE CAT 5 ETHERNET CABLE.

NOT TO SCALE

MODEL: D:\p\h\... FILE NAME: S:\CEN\WV\ORD\ESP\AV\hanson\...# 68H18 D4 ITS System 2023-1168H18 D4 ITS System 2023-1.dgn

USER NAME = hansonj	DESIGNED -	REVISED -
PLOT SCALE = 23,8272 * / in.	DRAWN -	REVISED -
PLOT DATE = 7/8/2022	CHECKED -	REVISED -
	DATE -	REVISED -

STATE OF ILLINOIS
DEPARTMENT OF TRANSPORTATION

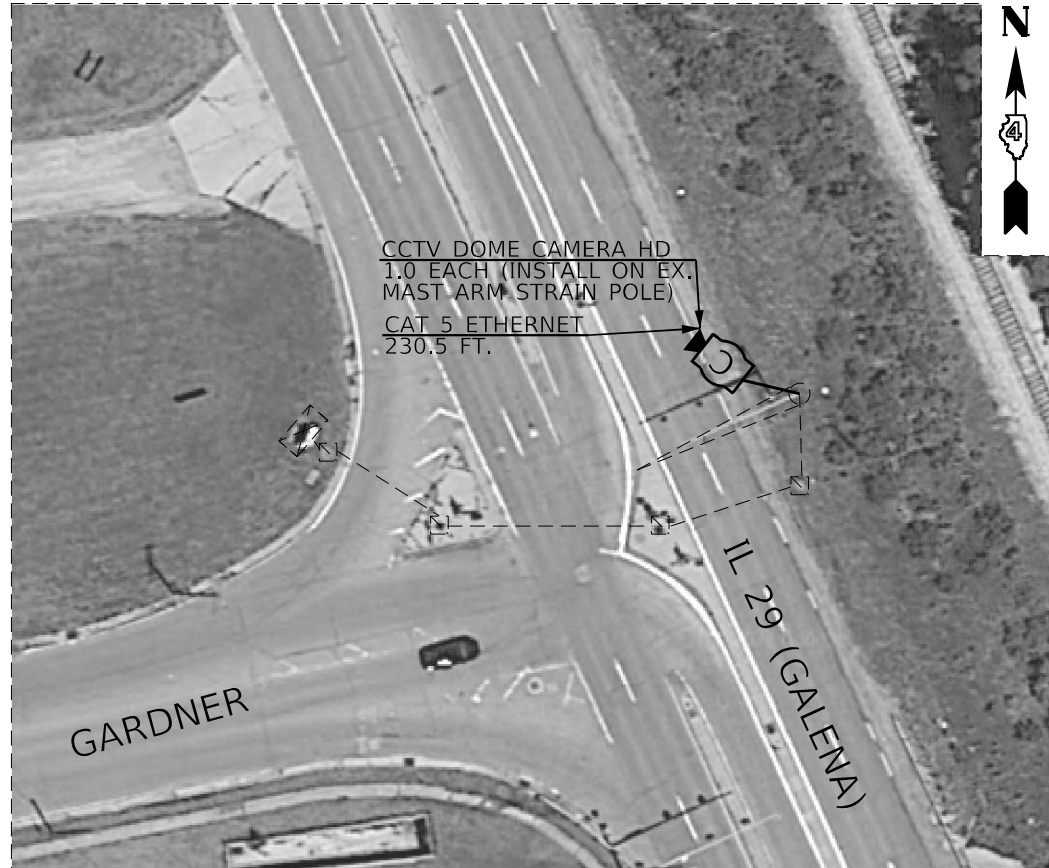
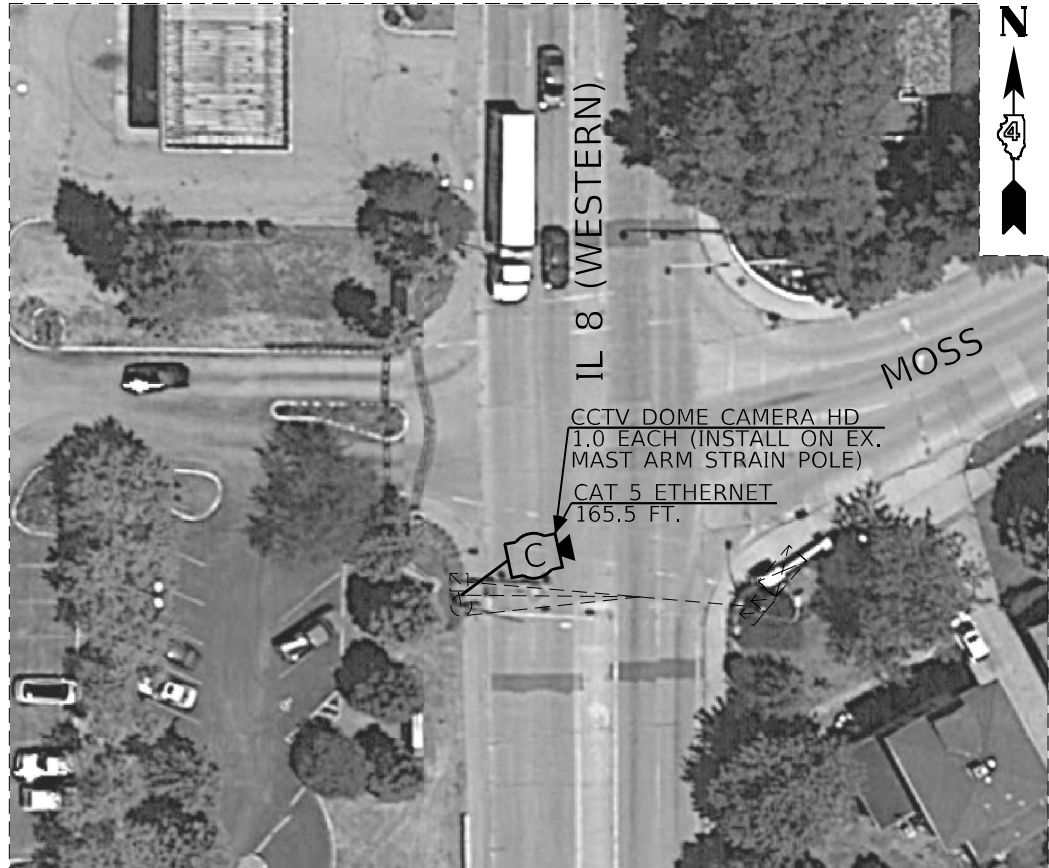
PROPOSED ITS PLANS - CONTINUED

SCALE: SHEET OF SHEETS STA. TO STA.

F.A. RTE.	SECTION	COUNTY	TOTAL SHEETS	SHEET NO.
VAR.	D4 ITS SYSTEM 2023-1	VARIOUS	22	13
CONTRACT NO.				
ILLINOIS		FED. AID PROJECT		



BILL OF MATERIALS		
ITEM DESCRIPTION	UNIT	QTY.
CLOSED CIRCUIT TELEVISION DOME CAMERA, HD	EACH	4.0
CAT 5 ETHERNET CABLE	FOOT	777.0
CAMERA POLE, 20 FT.	EACH	2.0



MODEL Path: \\S:\CEN\WV\ORD\SP\AN\hanson\68H18 D4 ITS System 2023-1.dgn
 FILE NAME: S:\CEN\WV\ORD\SP\AN\hanson\68H18 D4 ITS System 2023-1.dgn

USER NAME = hansonj	DESIGNED -	REVISED -
PLOT SCALE = 23,8272 * / in.	DRAWN -	REVISED -
PLOT DATE = 7/8/2022	CHECKED -	REVISED -
	DATE -	REVISED -

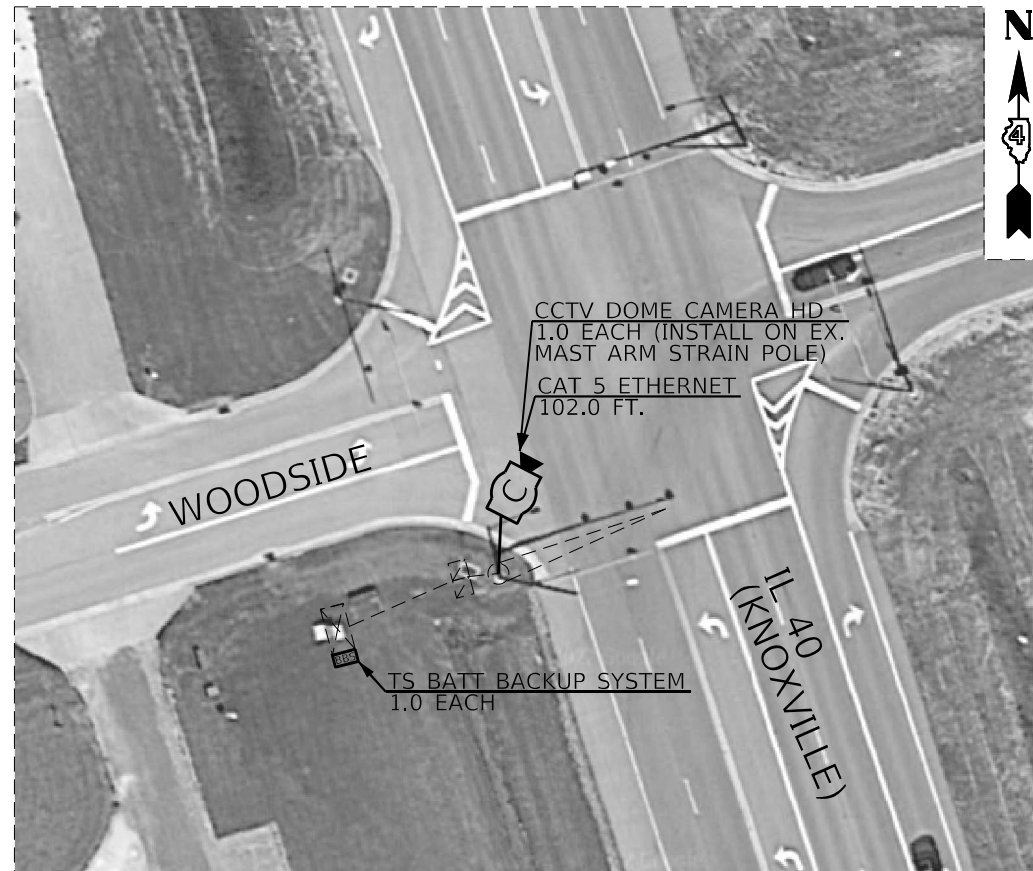
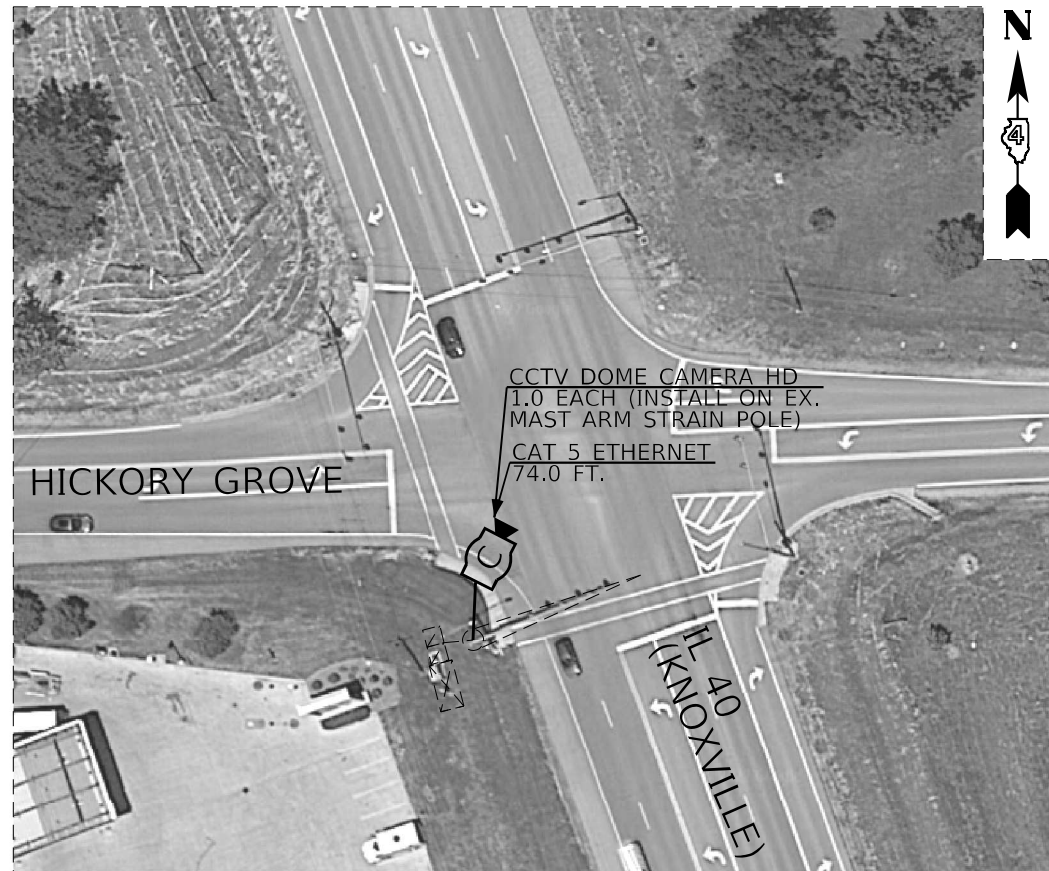
STATE OF ILLINOIS
DEPARTMENT OF TRANSPORTATION

PROPOSED ITS PLANS - CONTINUED

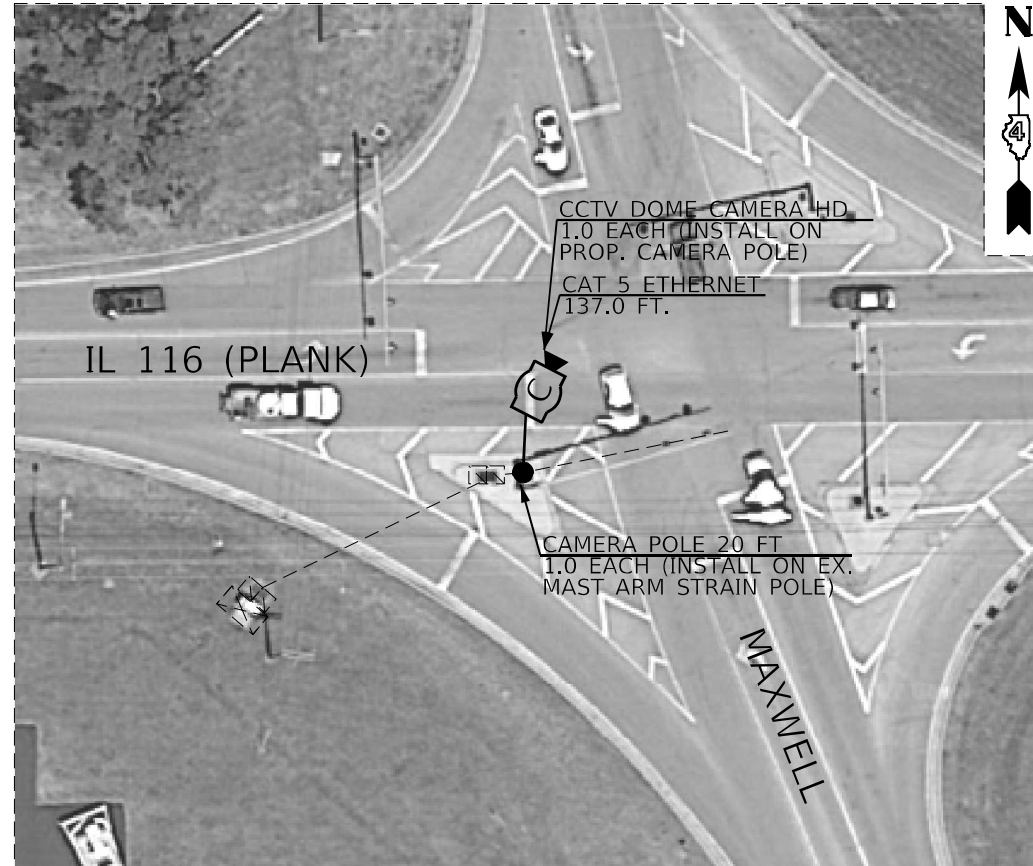
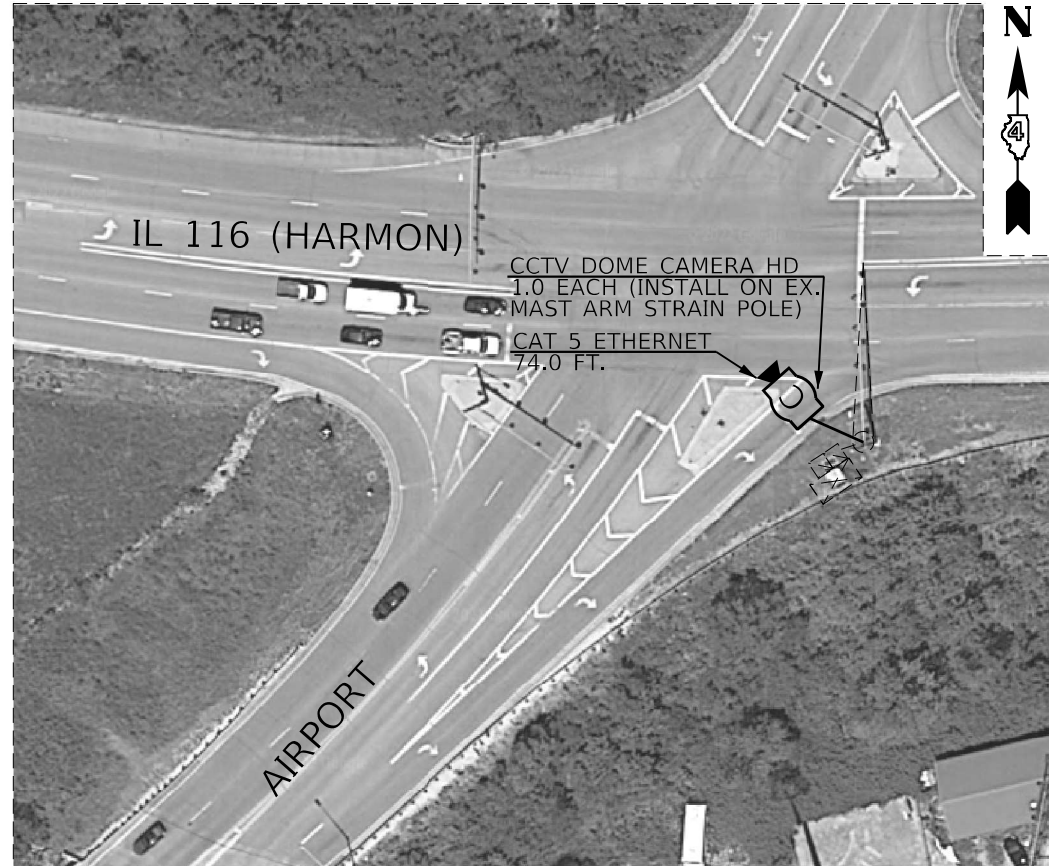
SCALE: SHEET OF SHEETS STA. TO STA.

NOT TO SCALE

F.A. RTE.	SECTION	COUNTY	TOTAL SHEETS	SHEET NO.
VAR.	D4 ITS SYSTEM 2023-1	VARIOUS	22	14
			CONTRACT NO. 68H18	
		ILLINOIS FED. AID PROJECT		



BILL OF MATERIALS		
ITEM DESCRIPTION	UNIT	QTY.
CLOSED CIRCUIT TELEVISION DOME CAMERA, HD	EACH	4.0
CAT 5 ETHERNET CABLE	FOOT	387.0
TRAFFIC SIGNAL BATTERY BACKUP SYSTEM	EACH	1.0
CAMERA POLE, 20 FT.	EACH	1.0



NOT TO SCALE

MODEL: D:\p\h\... FILE NAME: S:\CEN\WV\ORD\ESP\AV\Harmon.dwg 68H18 D4 ITS System 2023-1168H18 D4 ITS System 2023-1.dwg

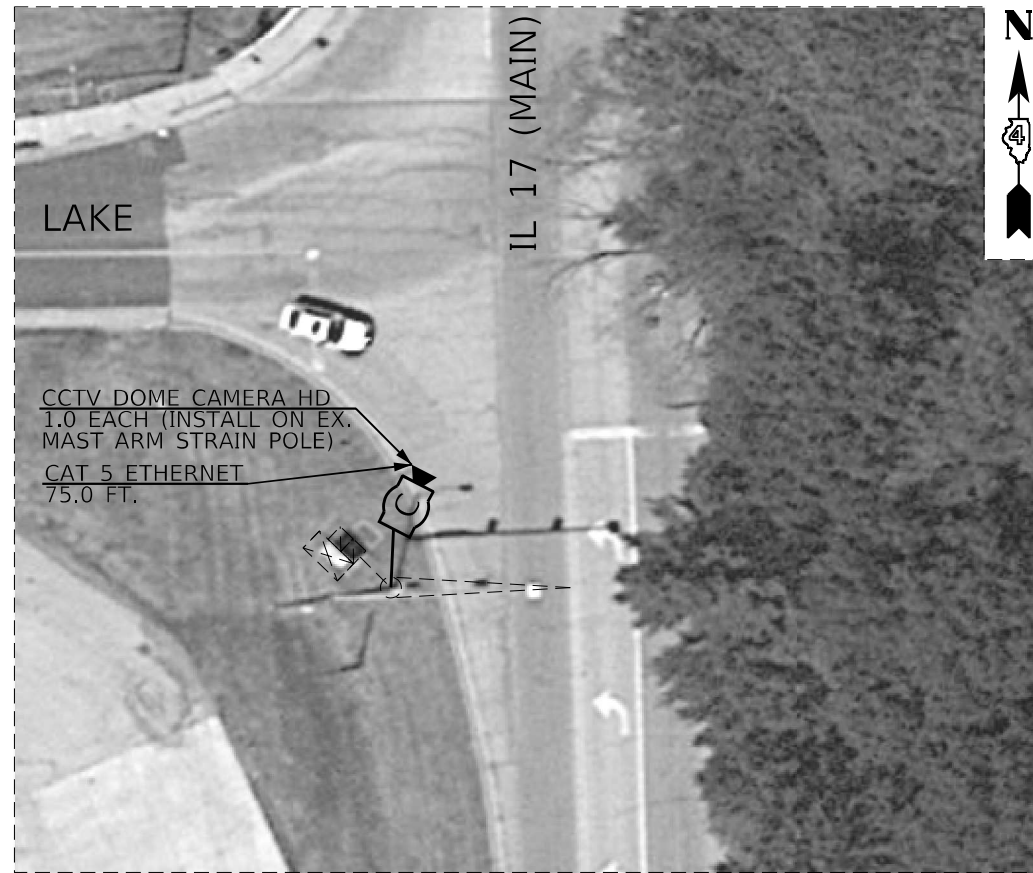
USER NAME = hansonj	DESIGNED -	REVISED -
PLOT SCALE = 23,8272 * / in.	DRAWN -	REVISED -
PLOT DATE = 7/8/2022	CHECKED -	REVISED -
	DATE -	REVISED -

STATE OF ILLINOIS
DEPARTMENT OF TRANSPORTATION

PROPOSED ITS PLANS - CONTINUED

SCALE: SHEET OF SHEETS STA. TO STA.

F.A. RTE.	SECTION	COUNTY	TOTAL SHEETS	SHEET NO.
VAR.	D4 ITS SYSTEM 2023-1	VARIOUS	22	15
			CONTRACT NO. 68H18	
		ILLINOIS	FED. AID PROJECT	



BILL OF MATERIALS		
ITEM DESCRIPTION	UNIT	QTY.
CLOSED CIRCUIT TELEVISION DOME CAMERA, HD	EACH	2.0
CAT 5 ETHERNET CABLE	FOOT	291.0
CAT 6 ETHERNET CABLE	FOOT	249.5
WIRELESS ETHERNET RADIO	EACH	2.0



- NOTES:
1. THE CONTRACTOR SHALL FIELD VERIFY THAT A CLEAR LINE OF SIGHT EXISTS BETWEEN THE TWO RADIOS PRIOR TO EQUIPMENT INSTALLATION. IN THE EVENT THAT TWO RADIOS DO NOT HAVE THE REQUIRED LINE OF SIGHT, THE CONTRACTOR SHALL NOTIFY THE RESIDENT ENGINEER FOR APPROVAL TO RELOCATE ONE OR MORE RADIOS TO A NEW LOCATION THAT HAS LINE OF SIGHT. THERE WILL BE NO ADDITIONAL PAYMENT IF ONE OR MORE RADIOS NEEDS TO BE RELOCATED TO A LOCATION OTHER THAN THE ONE SHOWN IN THE PLANS.
 2. SEE THE WIRELESS ETHERNET RADIO SCHEDULE ON SHEET 6 FOR INSTALLATION DETAILS.

MODEL: D:\p\h\...
 FILE NAME: S:\CEN\W\W\ORD\ESP\AN\Hanson\68H18 D4 ITS System 2023-1\68H18 D4 ITS System 2023-1.dgn

USER NAME = hansonj	DESIGNED -	REVISED -
PLOT SCALE = 23,8272 * / in.	DRAWN -	REVISED -
PLOT DATE = 7/8/2022	CHECKED -	REVISED -
	DATE -	REVISED -

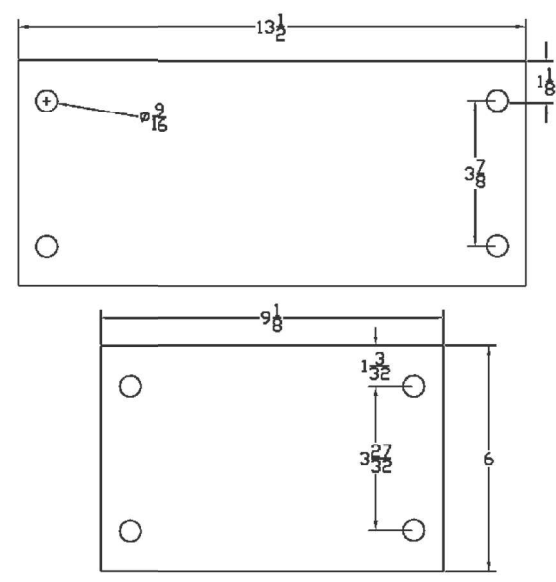
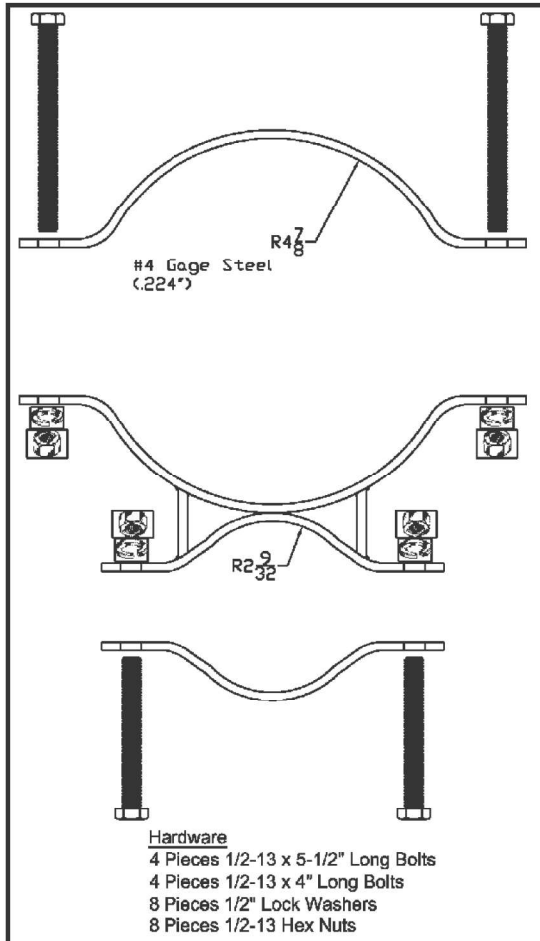
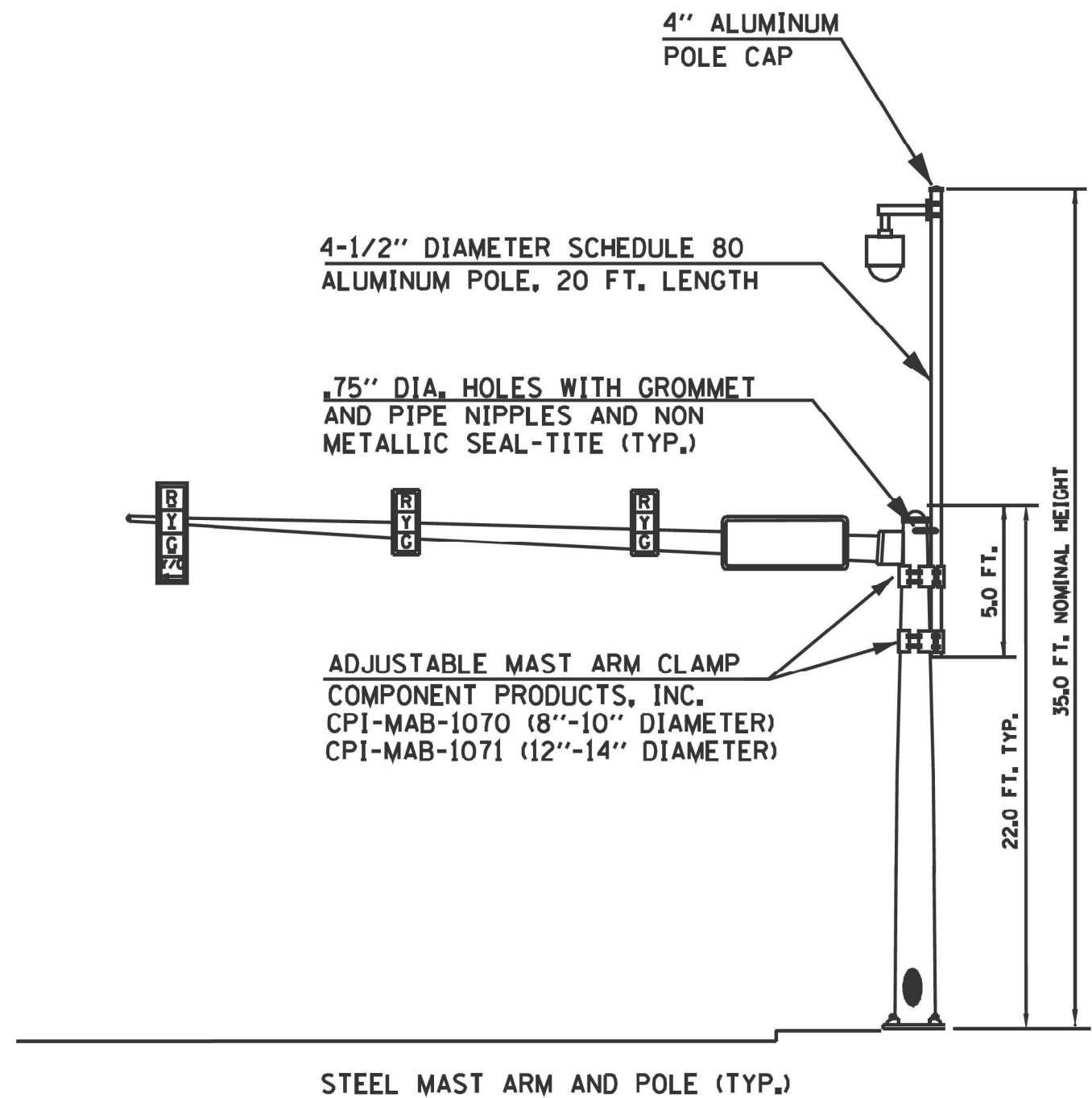
STATE OF ILLINOIS
DEPARTMENT OF TRANSPORTATION

PROPOSED ITS PLANS - CONTINUED

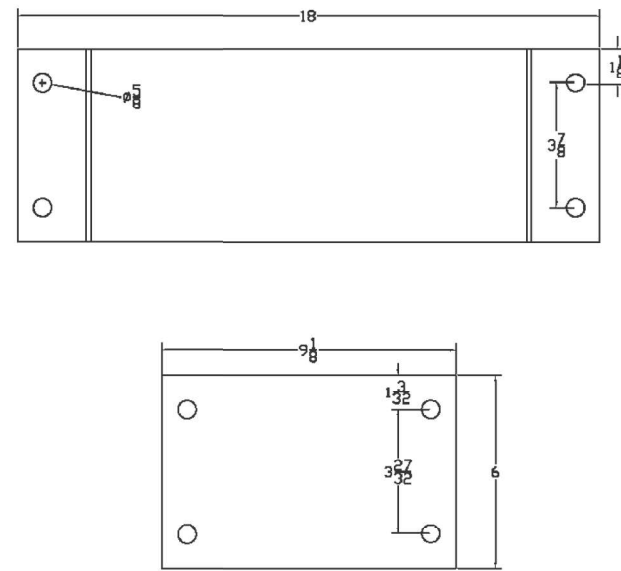
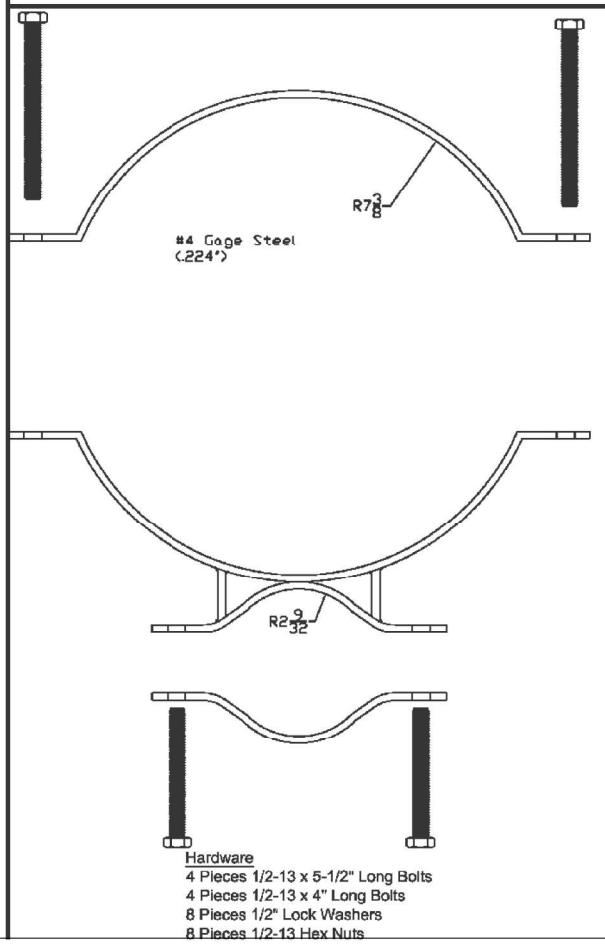
SCALE: SHEET OF SHEETS STA. TO STA.

F.A. RTE.	SECTION	COUNTY	TOTAL SHEETS	SHEET NO.
VAR.	D4 ITS SYSTEM 2023-1	VARIOUS	22	16
			CONTRACT NO. 68H18	
		ILLINOIS FED. AID PROJECT		

NOT TO SCALE



**ADJUSTABLE MAST ARM CLAMP
COMPONENT PRODUCTS, INC.
CPI-MAB-1070 (8"-10" DIAMETER)**



**ADJUSTABLE MAST ARM CLAMP
COMPONENT PRODUCTS, INC.
CPI-MAB-1071 (12"-14" DIAMETER)**

NOT TO SCALE

MODEL Path: S:\CEN\W\W000\DESIGN\AN\barson\68H18 D4 ITS System 2023-1.dgn
FILE NAME: S:\CEN\W\W000\DESIGN\AN\barson\68H18 D4 ITS System 2023-1.dgn

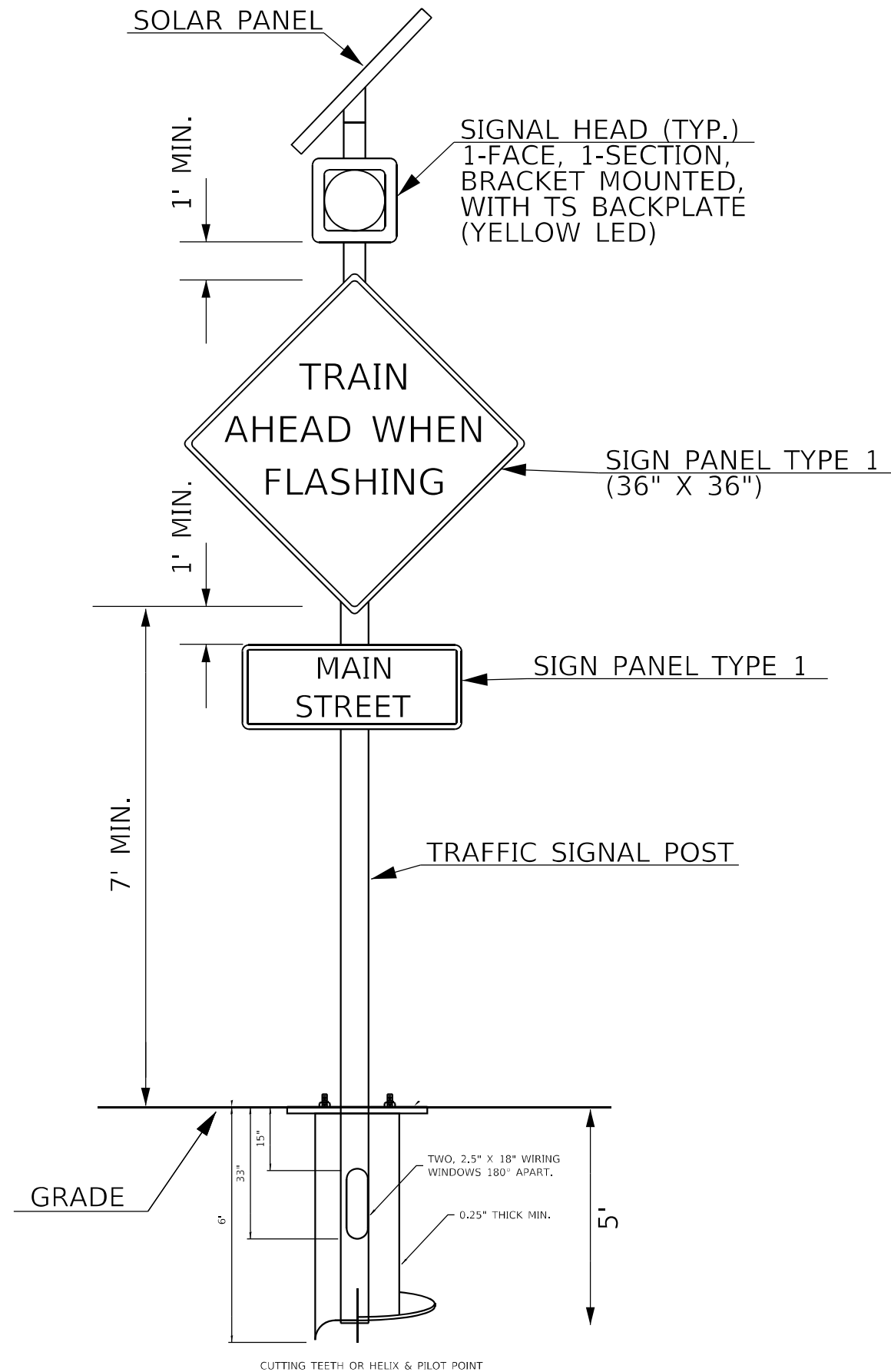
USER NAME = hansonj	DESIGNED -	REVISED -
	DRAWN -	REVISED -
PLOT SCALE = 23.8272 * / in.	CHECKED -	REVISED -
PLOT DATE = 7/8/2022	DATE -	REVISED -

**STATE OF ILLINOIS
DEPARTMENT OF TRANSPORTATION**

PROPOSED CAMERA POLE DETAIL

SCALE: SHEET OF SHEETS STA. TO STA.

F.A. RTE.	SECTION	COUNTY	TOTAL SHEETS	SHEET NO.
VAR.	D4 ITS SYSTEM 2023-1	VARIOUS	22	17
			CONTRACT NO. 68H18	
ILLINOIS FED. AID PROJECT				



MODEL: D:\p\h\h
 FILE NAME: S:\CEN\W\W\ORD\DESIGN\AN\Anson\68H18 D4 ITS System 2023-1.dgn
 MODEL: D:\p\h\h
 FILE NAME: S:\CEN\W\W\ORD\DESIGN\AN\Anson\68H18 D4 ITS System 2023-1.dgn

NOT TO SCALE

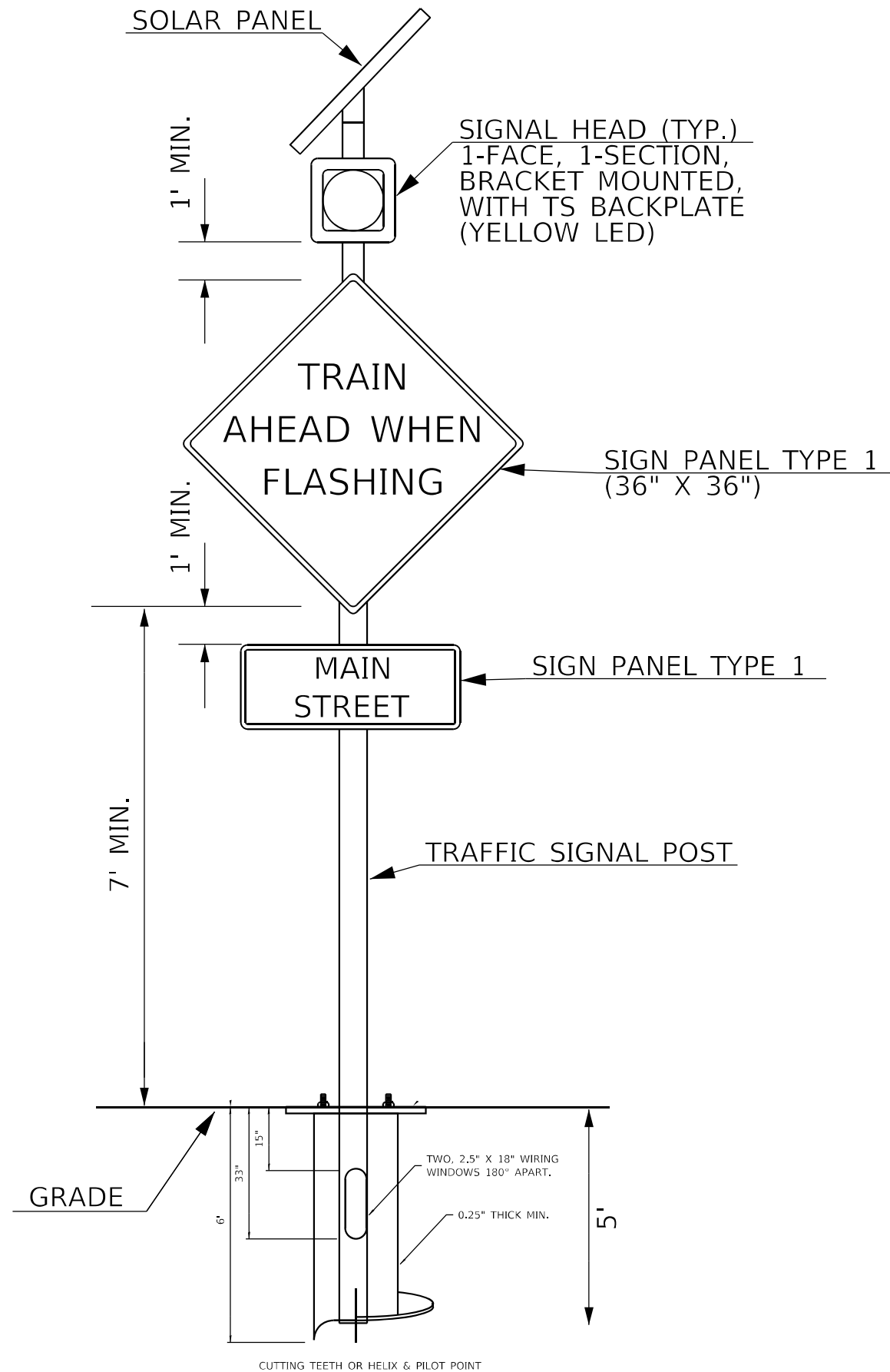
USER NAME = hansonj	DESIGNED -	REVISED -
	DRAWN -	REVISED -
PLOT SCALE = 23,8272 * / in.	CHECKED -	REVISED -
PLOT DATE = 7/8/2022	DATE -	REVISED -

STATE OF ILLINOIS
DEPARTMENT OF TRANSPORTATION

PROPOSED RADIO ACTIVATED SOLAR ADVANCE
FLASHING BEACON SYSTEM DETAIL - LOCATION A

SCALE: SHEET OF SHEETS STA. TO STA.

F.A. RTE.	SECTION	COUNTY	TOTAL SHEETS	SHEET NO.
VAR.	D4 ITS SYSTEM 2023-1	VARIOUS	22	18
			CONTRACT NO. 68H18	
		ILLINOIS	FED. AID PROJECT	



NOT TO SCALE

MODEL: D:\p\h\h
 FILE NAME: S:\CEN\WV\ORD\DESIGN\AN\barson.dwg 68H18 D4 ITS System 2023-1068H18 D4 ITS System 2023-1.dgn

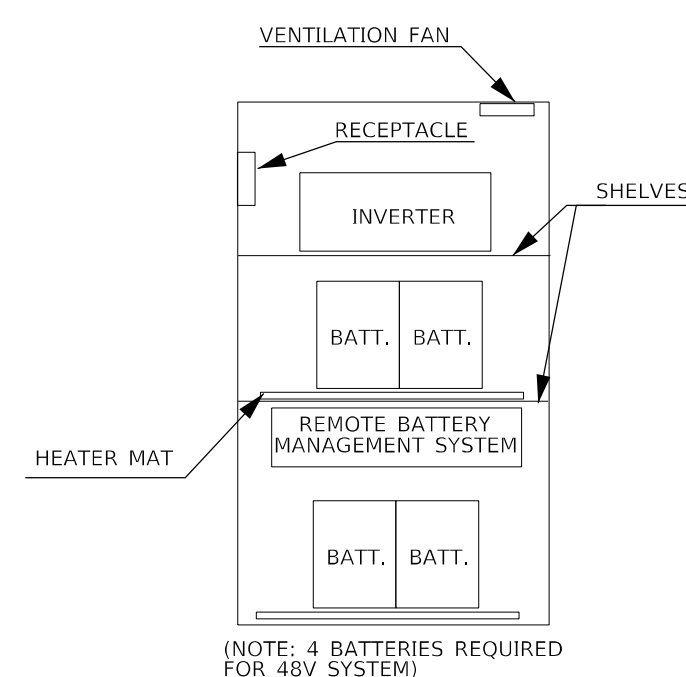
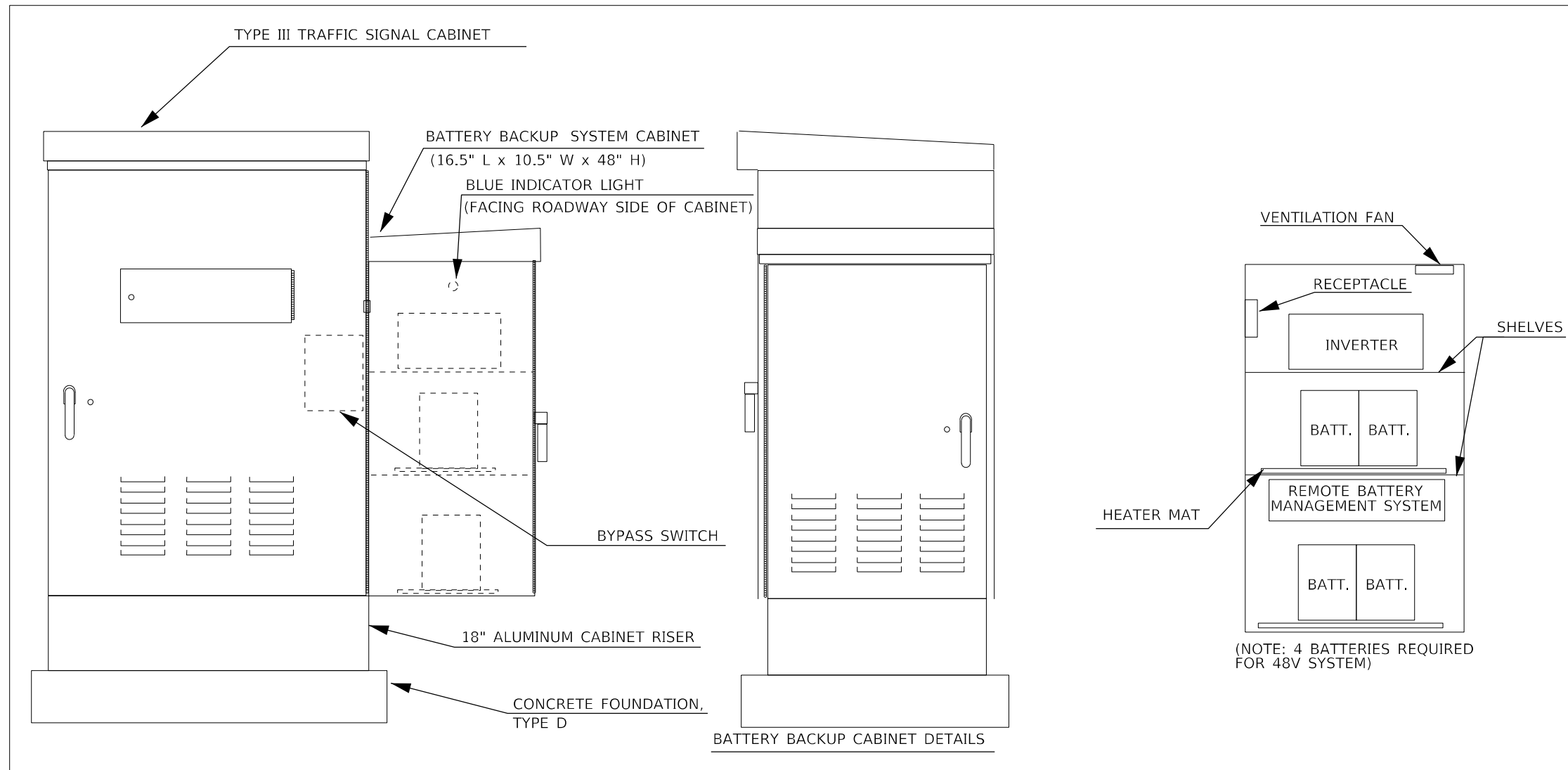
USER NAME = hansonj	DESIGNED -	REVISED -
	DRAWN -	REVISED -
PLOT SCALE = 23,8272 * / in.	CHECKED -	REVISED -
PLOT DATE = 7/8/2022	DATE -	REVISED -

**STATE OF ILLINOIS
 DEPARTMENT OF TRANSPORTATION**

**PROPOSED RADIO ACTIVATED SOLAR ADVANCE
 FLASHING BEACON SYSTEM DETAIL - LOCATION B**

SCALE: SHEET OF SHEETS STA. TO STA.

F.A. RTE.	SECTION	COUNTY	TOTAL SHEETS	SHEET NO.
VAR.	D4 ITS SYSTEM 2023-1	VARIOUS	22	19
ILLINOIS FED. AID PROJECT			CONTRACT NO. 68H18	



(NOTE: 4 BATTERIES REQUIRED FOR 48V SYSTEM)

NOTES:

1. THE BATTERY BACKUP SYSTEM CABINET SHALL BE A NEMA TYPE 3R CABINET WITH MINIMUM OUTSIDE DIMENSIONS OF (16.5" L x 10.5" W x 48" H). THE CABINET SHALL BE EQUIPPED WITH A THREE POINT LATCHING MECHANISM, TWO SHELVES, THERMOSTATICALLY CONTROLLED VENTILATION FAN, AND A POWER RECEPTACLE. THE CABINET SHALL BE MOUNTED TO THE SIDE OF THE PROPOSED TYPE IV CABINET WITH THE BOTTOM OF THE CABINET SUPPORTED BY THE CONCRETE FOUNDATION.
2. ALL CABINET LIGHTS, HEATER STRIPS, VENTILATION FANS, AND SERVICE RECEPTACLES SHALL BE BYPASSED WHEN THE BATTERY BACKUP UNIT IS OPERATING IN BATTERY MODE.
3. THE BATTERY BACKUP UNITS CONTACTS SHALL BE WIRED TO PROVIDE LOCAL CONTROLLER ALARMS (AS AVAILABLE IN THE PROPOSED CABINETS).
4. THE BYPASS SWITCH SHALL BE AUTOMATIC AND SHALL BE INSTALLED IN THE BBS CABINET.
5. THE BATTERY BACKUP SYSTEM SHALL INCLUDE A REMOTE BATTERY MANAGEMENT SYSTEM TO PROVIDE DETAILED REAL-TIME INFORMATION ON BATTERY STATUS AND HAVE THE ABILITY TO PERFORM INTELLIGENT BATTERY BALANCING TO EXTEND BATTERY LIFE.

MODEL: D:\p4\h\p...
 FILE NAME: S:\CEN\W\W\ORD\DESIGN\AN\Anson\68H18 D4 ITS System 2023-1.dgn
 MODEL: D:\p4\h\p...
 FILE NAME: S:\CEN\W\W\ORD\DESIGN\AN\Anson\68H18 D4 ITS System 2023-1.dgn

NOT TO SCALE

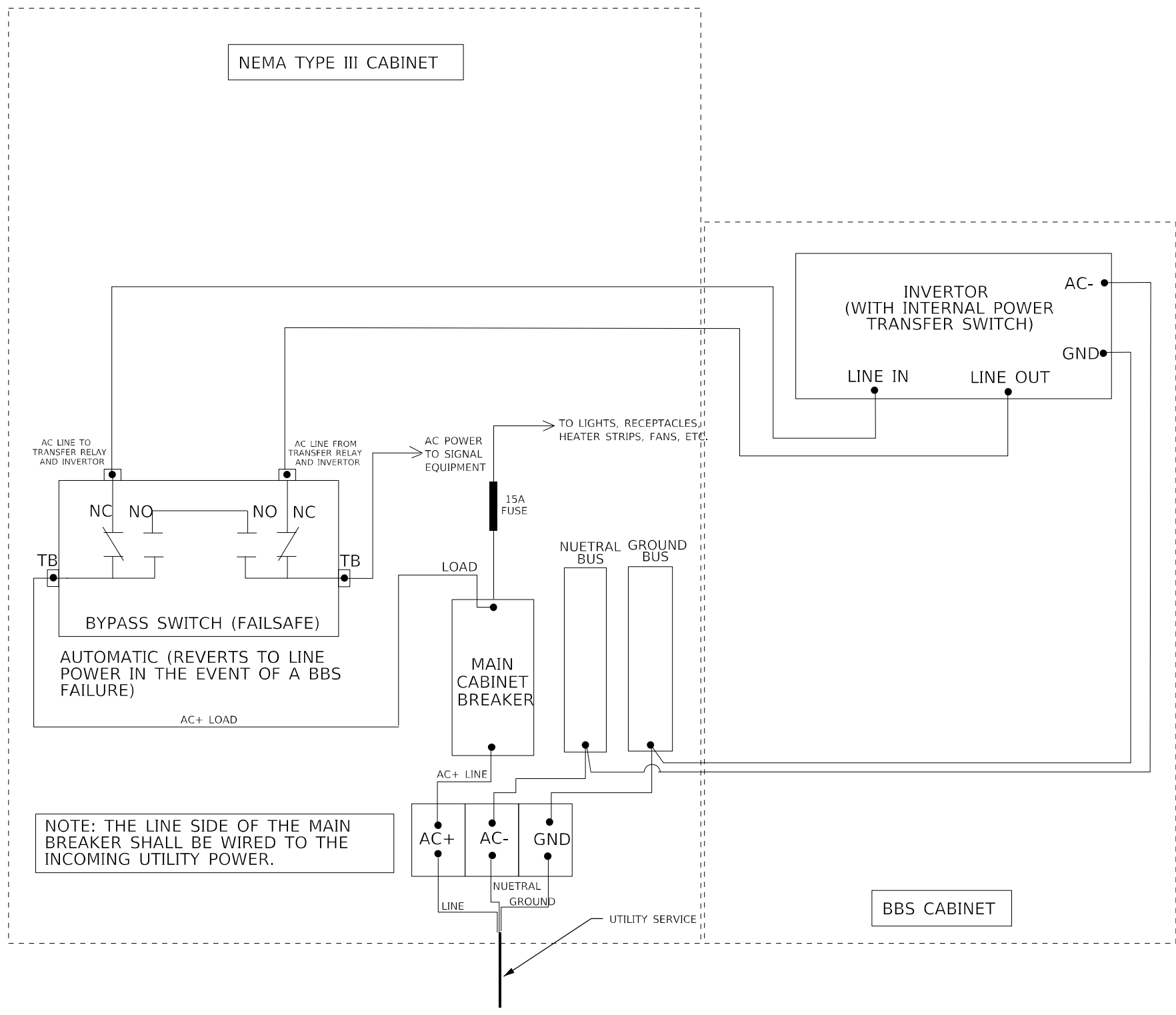
USER NAME = hansonj	DESIGNED -	REVISED -
	DRAWN -	REVISED -
PLOT SCALE = 23,8272 * / in.	CHECKED -	REVISED -
PLOT DATE = 7/8/2022	DATE -	REVISED -

**STATE OF ILLINOIS
DEPARTMENT OF TRANSPORTATION**

BATTERY BACKUP SYSTEM CABINET DETAIL

SCALE: SHEET OF SHEETS STA. TO STA.

F.A. RTE.	SECTION	COUNTY	TOTAL SHEETS	SHEET NO.
VAR.	D4 ITS SYSTEM 2023-1	VARIOUS	22	20
ILLINOIS FED. AID PROJECT			CONTRACT NO. 68H18	



NOTE: THE LINE SIDE OF THE MAIN BREAKER SHALL BE WIRED TO THE INCOMING UTILITY POWER.

MODEL: D:\d4\h... FILE NAME: S:\CEN\W\W\ORD\DESIGN\AN\Anson\68H18 D4 ITS System 2023-1.dgn

NOT TO SCALE

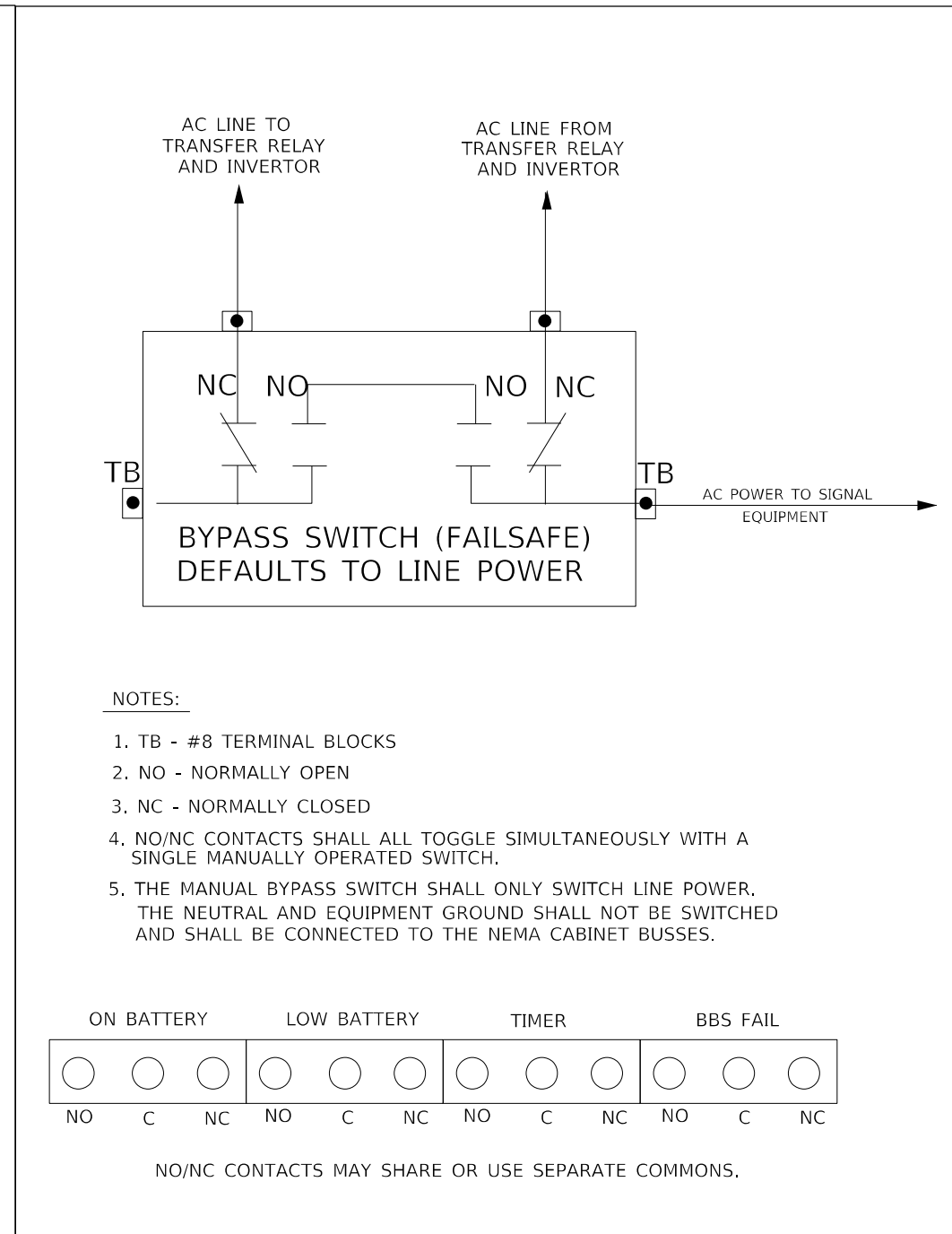
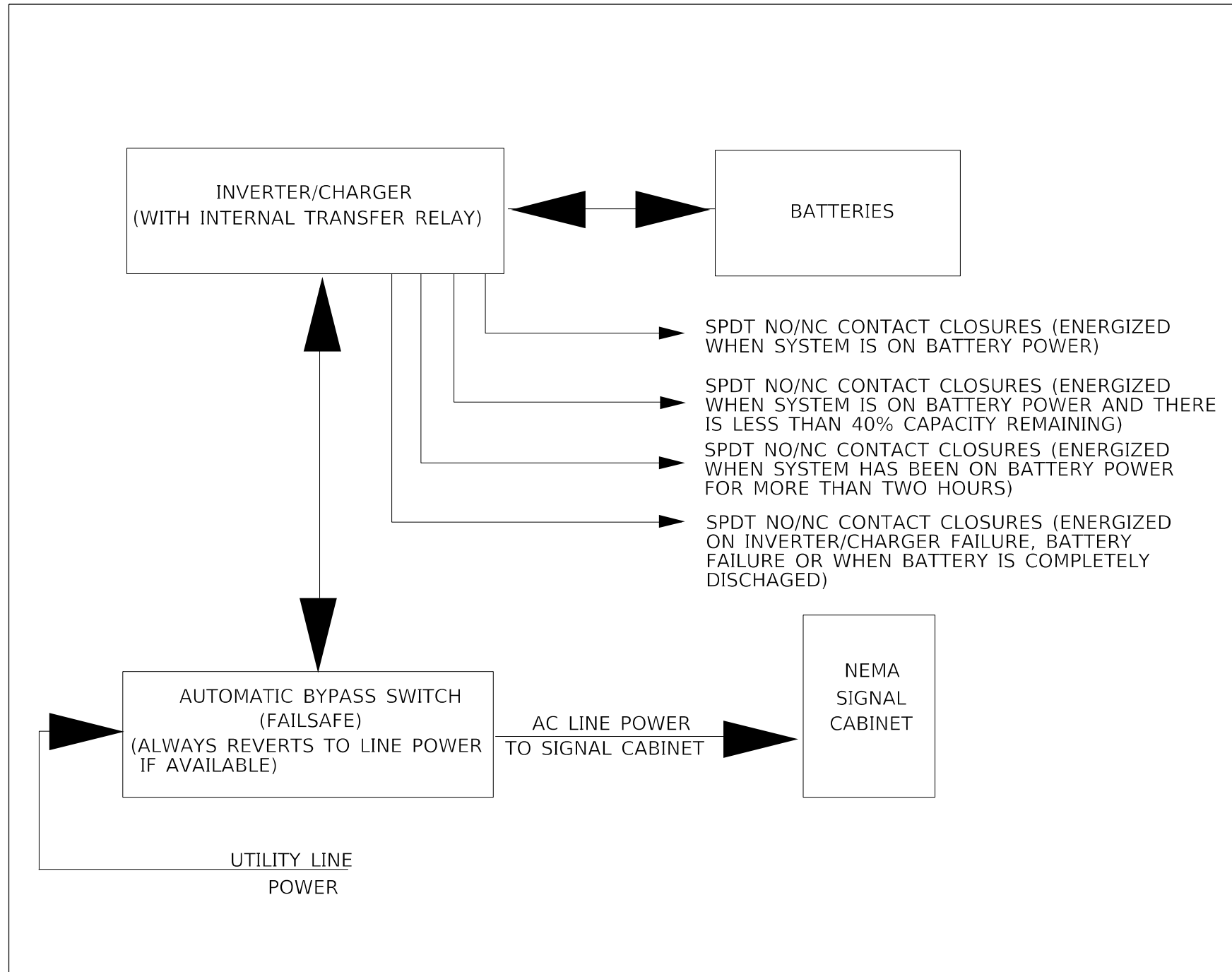
USER NAME = hansonj	DESIGNED -	REVISED -
	DRAWN -	REVISED -
PLOT SCALE = 23,8272 * / in.	CHECKED -	REVISED -
PLOT DATE = 7/8/2022	DATE -	REVISED -

**STATE OF ILLINOIS
DEPARTMENT OF TRANSPORTATION**

BATTERY BACKUP SYSTEM CABINET WIRING DIAGRAM

F.A. RTE.	SECTION	COUNTY	TOTAL SHEETS	SHEET NO.
VAR.	D4 ITS SYSTEM 2023-1	VARIOUS	22	21
CONTRACT NO. 68H18				
ILLINOIS FED. AID PROJECT				

SCALE: SHEET OF SHEETS STA. TO STA.



MODEL: D:\p\h\p\... FILE NAME: S:\CEN\W\W\ORD\DESIGN\AN\hanson.dwg 68H18 D4 ITS System 2023-1.dgn

NOT TO SCALE

USER NAME = hansonj	DESIGNED -	REVISED -	STATE OF ILLINOIS DEPARTMENT OF TRANSPORTATION	BATTERY BACKUP SYSTEM BLOCK AND BYPASS SWITCH DIAGRAMS		F.A. RTE.	SECTION	COUNTY	TOTAL SHEETS	SHEET NO.
DRAWN -	REVISED -	VAR.				D4 ITS SYSTEM 2023-1	VARIOUS	22	22	
PLOT SCALE = 23,8272 * / in.	CHECKED -	REVISED -				CONTRACT NO. 68H18				
PLOT DATE = 7/8/2022	DATE -	REVISED -				ILLINOIS FED. AID PROJECT				
SCALE:		SHEET OF SHEETS		STA. TO STA.						